



# SRC CLIMATE REFERENCE STATION DAILY DATA REPORT

## CONSERVATION LEARNING CENTRE

Saskatchewan 53.03°N 105.77°W Estab. 2011

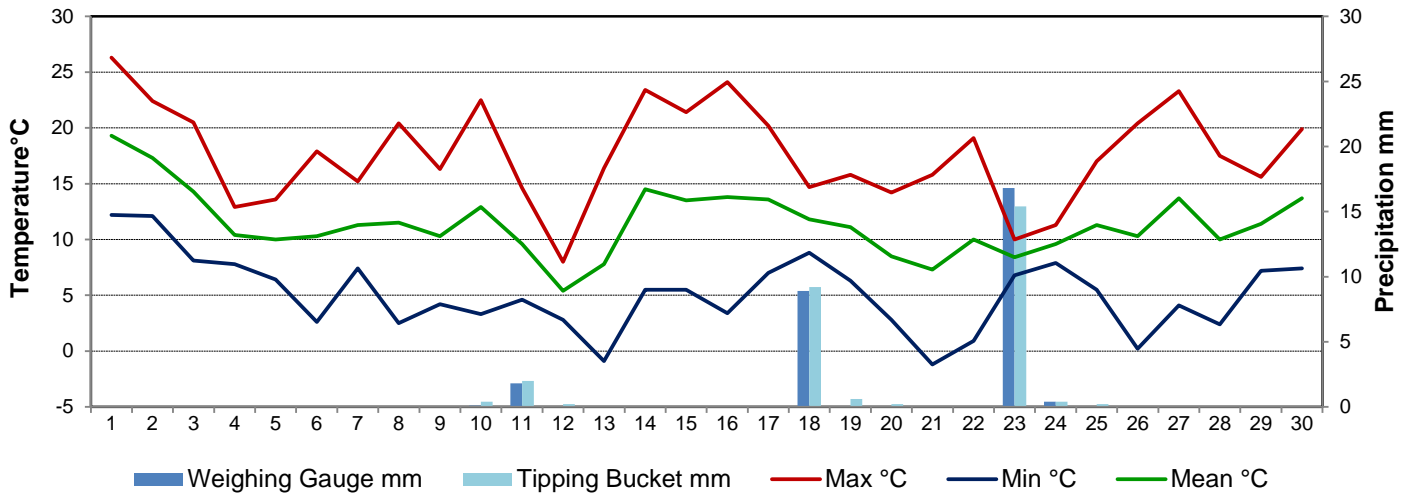
Preliminary **September 2016**

Day	Temperature			Degree-days			Precipitation			Relative Humidity		Station Pressure <i>corrected to sea level</i>	
	Max	Min	Mean	Growing	Heating	Cooling	Weighing Gauge	Tipping Bucket	Snow-on-Ground 0900h	Max ½ hr Avg	Min ½ hr Avg	Max ½ hr Avg	Min ½ hr Avg
	°C	°C	°C	5°C base	18°C base	18°C base	mm	mm	cm	%	%	mbar	mbar
1	26.3	12.2	19.3	14.3	0.0	1.3	0.0	0.0	-	90	51	1014	1005
2	22.4	12.1	17.3	12.3	0.7	0.0	0.0	0.0	-	94	67	1005	1002
3	20.5	8.1	14.3	9.3	3.7	0.0	0.0	0.0	-	93	40	1007	1002
4	12.9	7.8	10.4	5.4	7.6	0.0	0.0	0.0	-	80	59	1015	1008
5	13.6	6.4	10.0	5.0	8.0	0.0	0.0	0.0	-	86	53	1015	1013
6	17.9	2.6	10.3	5.3	7.7	0.0	0.0	0.0	-	95	43	1014	1011
7	15.2	7.4	11.3	6.3	6.7	0.0	0.0	0.0	-	92	64	1010	1006
8	20.4	2.5	11.5	6.5	6.5	0.0	0.0	0.0	-	94	38	1009	1005
9	16.3	4.2	10.3	5.3	7.7	0.0	0.0	0.0	-	93	48	1016	1010
10	22.5	3.3	12.9	7.9	5.1	0.0	0.1	0.4	-	93	32	1015	1004
11	14.6	4.6	9.6	4.6	8.4	0.0	1.8	2.0	-	90	53	1016	1005
12	8.0	2.8	5.4	0.4	12.6	0.0	0.0	0.2	-	88	47	1023	1017
13	16.4	-0.9	7.8	2.8	10.2	0.0	0.0	0.0	-	93	32	1021	1012
14	23.4	5.5	14.5	9.5	3.5	0.0	0.0	0.0	-	78	26	1012	1009
15	21.4	5.5	13.5	8.5	4.5	0.0	0.0	0.0	-	91	31	1015	1010
16	24.1	3.4	13.8	8.8	4.2	0.0	0.0	0.0	-	92	25	1015	1009
17	20.2	7.0	13.6	8.6	4.4	0.0	0.0	0.0	-	79	40	1009	996
18	14.7	8.8	11.8	6.8	6.2	0.0	8.9	9.2	-	93	79	1002	996
19	15.8	6.3	11.1	6.1	6.9	0.0	0.0	0.6	-	91	52	1012	1002
20	14.2	2.8	8.5	3.5	9.5	0.0	0.0	0.2	-	92	57	1021	1013
21	15.8	-1.2	7.3	2.3	10.7	0.0	0.0	0.0	-	95	43	1023	1021
22	19.1	0.9	10.0	5.0	8.0	0.0	0.0	0.0	-	94	31	1024	1021
23	10.0	6.8	8.4	3.4	9.6	0.0	16.8	15.4	-	94	63	1022	1010
24	11.3	7.9	9.6	4.6	8.4	0.0	0.4	0.4	-	95	74	1014	1009
25	17.0	5.5	11.3	6.3	6.7	0.0	0.0	0.2	-	78	26	1018	1014
26	20.4	0.2	10.3	5.3	7.7	0.0	0.0	0.0	-	87	29	1019	1014
27	23.3	4.1	13.7	8.7	4.3	0.0	0.0	0.0	-	89	32	1019	1009
28	17.5	2.4	10.0	5.0	8.0	0.0	0.0	0.0	-	94	27	1027	1020
29	15.6	7.2	11.4	6.4	6.6	0.0	0.0	0.0	-	89	63	1025	1018
30	19.9	7.4	13.7	8.7	4.3	0.0	0.0	0.0	-	94	52	1017	1013
Total				192.9	198.4	1.3	28.0	28.6					
Avg	17.7	5.1	11.4				300.4	Cumulative ppt					
Extreme	26.3	-1.2					16.8	15.4	0	95	25	1027	996
Date	1	21					23	23		6	16	28	17

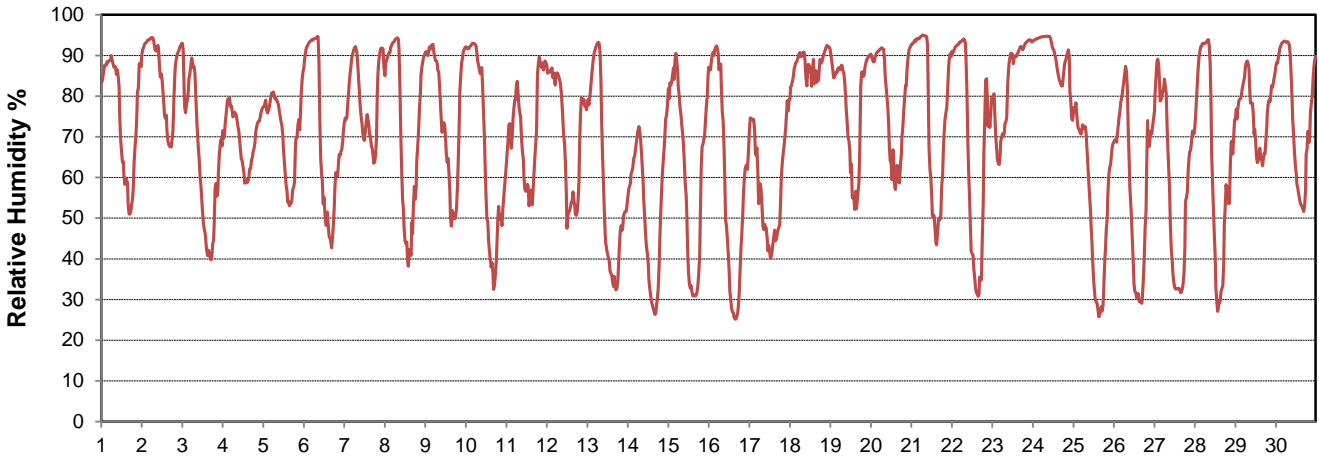
**SRC proudly recognizes the following CRS supporters:**



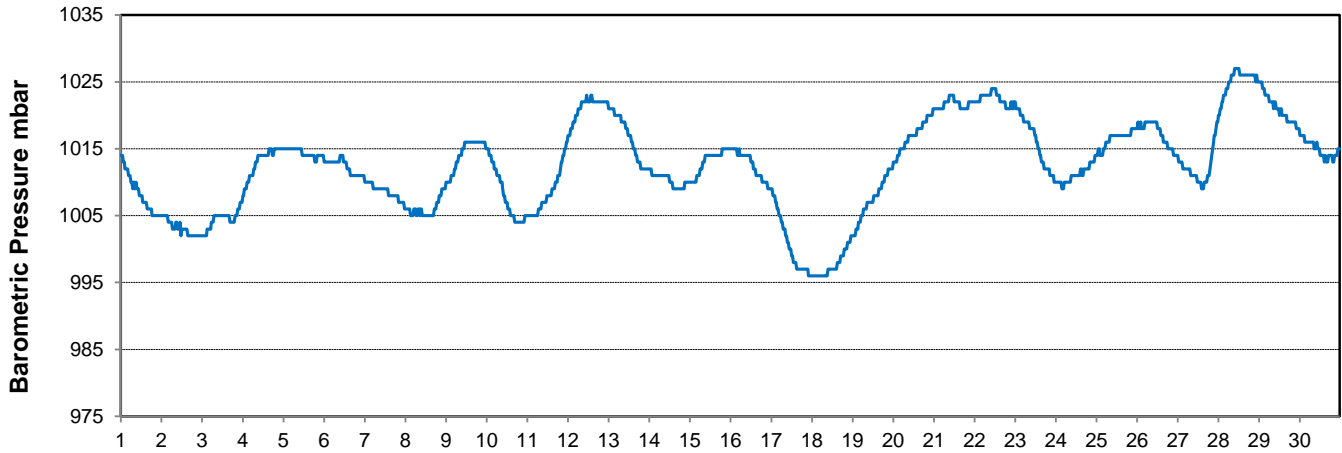
### Temperature and Precipitation for September 2016



### Relative Humidity for September 2016



### Barometric Pressure Corrected to Sea Level for September 2016





# SRC CLIMATE REFERENCE STATION DAILY DATA REPORT

## CONSERVATION LEARNING CENTRE

Saskatchewan 53.03°N 105.77°W Estab. 2011

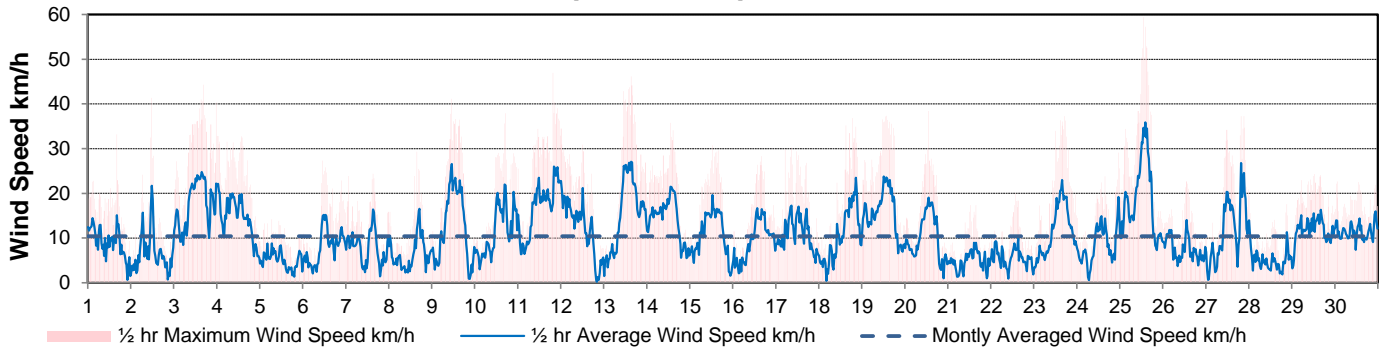
Preliminary **September 2016**

Day	Wind Gust			Soil Temperatures at 0900hrs								Soil Moisture	Radiation		
	Max	Direction	Time	Surface	5 cm	10 cm	20 cm	50 cm	100 cm	150 cm	300 cm	0900hrs	Bright Sunshine	Global	Diffuse
	km/h			°C	°C	°C	°C	°C	°C	°C	°C	%	hours	MJ/m <sup>2</sup>	MJ/m <sup>2</sup>
1	33.2	SSE	16:21	15.0	15.0	15.0	15.0	14.5	13.5	12.0	8.0	30	3.9	9.0	8.0
2	41.4	N	11:37	17.0	15.0	15.0	15.0	14.5	13.5	12.0	8.0	30	4.5	8.9	7.9
3	44.3	SW	16:41	12.5	14.5	14.5	15.0	14.5	13.5	12.0	8.0	29	11.4	19.1	15.7
4	32.9	WNW	0:25	10.5	14.0	14.5	15.0	14.5	13.5	12.0	8.5	29	0.7	9.7	8.4
5	14.2	N	6:43	9.0	13.5	14.0	14.5	14.5	13.5	12.0	8.5	29	0.1	7.4	6.5
6	27.3	S	11:27	8.0	12.0	12.5	14.0	14.0	13.5	12.0	8.5	28	8.4	15.2	13.4
7	24.4	NNW	15:17	11.0	13.0	13.5	14.0	14.0	13.5	12.0	8.5	28	7.2	10.7	9.5
8	29.3	NE	15:54	8.5	12.0	12.5	13.5	13.5	13.0	12.0	8.5	28	9.4	15.1	14.4
9	41.1	NW	11:13	10.5	12.0	12.0	13.0	13.5	13.0	12.0	8.5	28	8.5	12.8	8.2
10	37.9	WSW	17:04	9.0	11.0	11.5	12.5	13.5	13.0	12.0	8.5	27	6.4	11.5	5.0
11	47.0	N	19:58	10.5	12.0	12.5	13.0	13.0	13.0	12.0	8.5	27	5.5	9.7	5.8
12	34.5	N	0:12	4.5	11.5	11.5	12.5	13.0	12.5	12.0	8.5	27	0.6	6.3	5.3
13	46.2	WSW	15:07	5.5	9.5	10.5	12.0	12.5	12.5	12.0	8.5	27	12.1	16.5	4.2
14	35.8	SW	13:21	10.0	10.5	11.0	11.5	12.5	12.5	12.0	8.5	27	12.0	17.0	2.1
15	30.8	N	12:54	13.0	11.0	11.0	12.0	12.5	12.5	12.0	8.5	27	12.1	16.7	1.8
16	28.3	SSW	16:01	8.5	10.0	10.5	12.0	12.5	12.5	12.0	8.5	26	12.1	15.2	3.9
17	30.3	SE	8:39	13.0	10.5	11.0	12.0	12.0	12.0	11.5	8.5	26	4.0	7.6	5.7
18	36.8	NW	18:44	11.5	11.5	11.5	12.0	12.0	12.0	11.5	8.5	26	0.2	4.8	4.3
19	37.3	NW	13:44	9.0	11.0	11.5	12.0	12.0	12.0	11.5	8.5	27	6.9	12.2	4.6
20	38.4	NNW	13:02	7.0	10.5	11.0	12.0	12.0	12.0	11.5	8.5	27	8.3	12.4	4.4
21	17.4	WSW	12:46	4.0	9.0	10.0	11.5	12.0	12.0	11.5	8.5	27	9.1	12.7	3.3
22	20.0	S	13:40	6.0	9.0	9.5	11.0	11.5	12.0	11.5	9.0	27	10.4	15.5	3.3
23	37.3	ESE	17:20	9.5	10.5	10.5	11.0	11.5	11.5	11.5	9.0	27	0.0	2.0	1.8
24	29.1	NW	23:05	10.0	10.5	10.5	10.5	11.0	11.5	11.0	8.5	30	0.0	2.7	2.4
25	59.4	NW	13:16	8.0	10.0	10.0	10.5	11.0	11.5	11.0	8.5	30	11.3	14.8	1.6
26	22.7	NW	13:20	5.5	8.5	9.5	10.5	11.0	11.5	11.0	9.0	29	11.5	14.3	1.6
27	37.3	NNW	19:41	8.0	9.0	9.5	10.5	11.0	11.5	11.0	9.0	29	11.1	14.0	1.5
28	19.5	NNW	0:18	6.0	9.0	9.5	10.5	11.0	11.5	11.0	9.0	29	8.5	12.4	2.0
29	24.3	ENE	12:32	9.0	10.0	10.0	10.5	11.0	11.0	11.0	9.0	29	5.6	8.1	4.4
30	22.7	E	1:00	9.0	10.5	10.5	11.0	11.0	11.0	11.0	9.0	29	10.4	12.9	1.8
Total													212.2	347.2	162.8
Mean				9.3	11.2	11.6	12.3	12.6	12.4	11.7	8.6	28.0	Sept 9, 2016 Recalibrated Bright Sunshine Instrument installed and Diffuse ring re-aligned		
Extreme	59.4	NW	13:16												
Date	25														

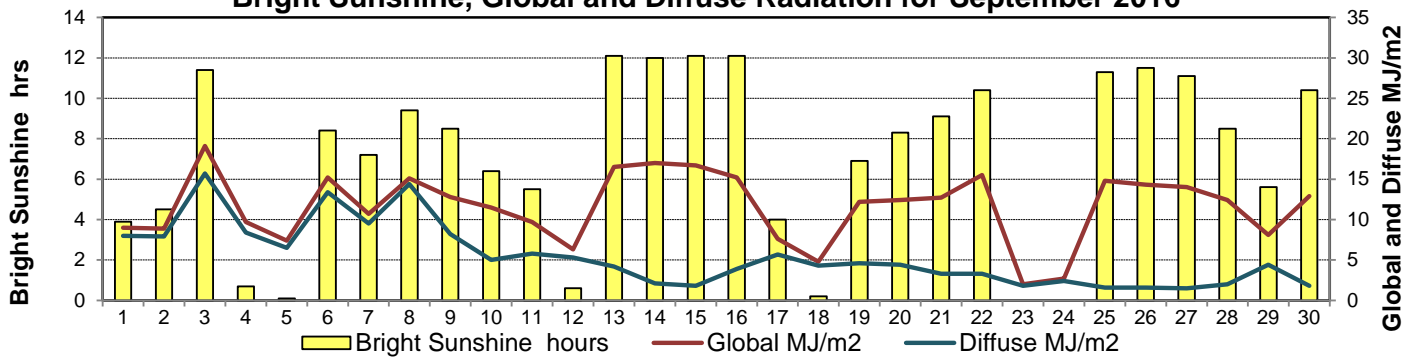
### GLOSSARY OF TERMS

<b>Degree-days</b>	<b>Radiation</b>
Tm Mean Temperature	Bright Sunshine is the unobstructed direct radiation from the sun, as opposed to the shading of a location by clouds or by other atmospheric obstructions.
Growing (Tm-5°C); if Tm ≤ 5°C then GDD = 0	
Heating (18°C-Tm); if Tm ≥ 18°C then HDD = 0	Diffuse is radiation reaching the earth's surface after having been scattered from the direct solar beam
Cooling (Tm-18°C); if Tm ≤ 18°C then CDD = 0	Global is the sum of the direct solar and diffuse radiation
T Trace of Precipitation	<b>Relative Humidity</b> The ratio of the air's water vapour content of its water vapour capacity which changes with temperature.
<b>SOG</b> Depth of snow-on-the-ground	
<b>Red Cell</b> no data available	<b>Air Pressure</b> The force exerted by the weight of a column of air above a given point
<b>Red Number</b> manual calculation	<b>Wind Gust</b> The daily highest instantaneous value recorded irrespective of direction and/or duration

### Wind Speed for September 2016

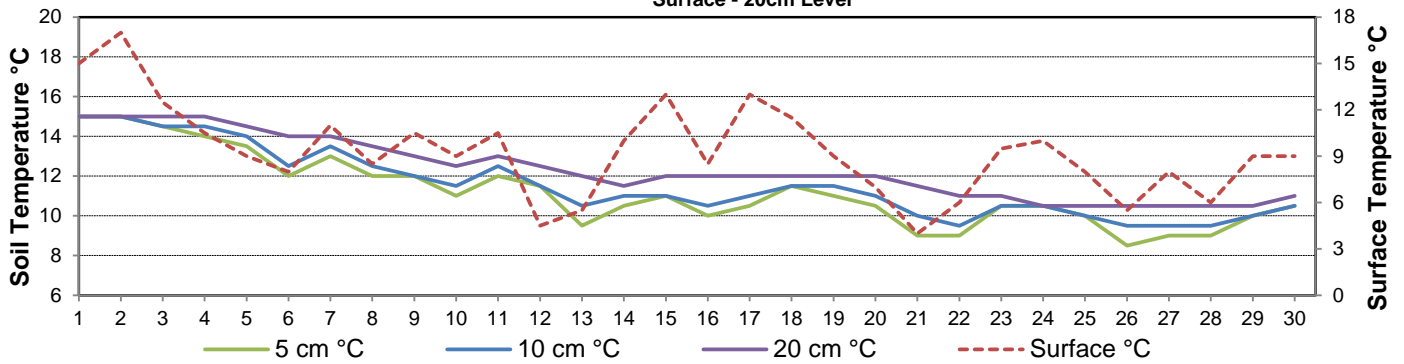


### Bright Sunshine, Global and Diffuse Radiation for September 2016



### Soil Temperatures for September 2016

Surface - 20cm Level



### Soil Temperatures for September 2016

50 - 300cm Level

