



SRC CLIMATE REFERENCE STATION DAILY DATA REPORT

CONSERVATION LEARNING CENTRE

Saskatchewan 53.03°N 105.77°W Estab. 2011

Preliminary

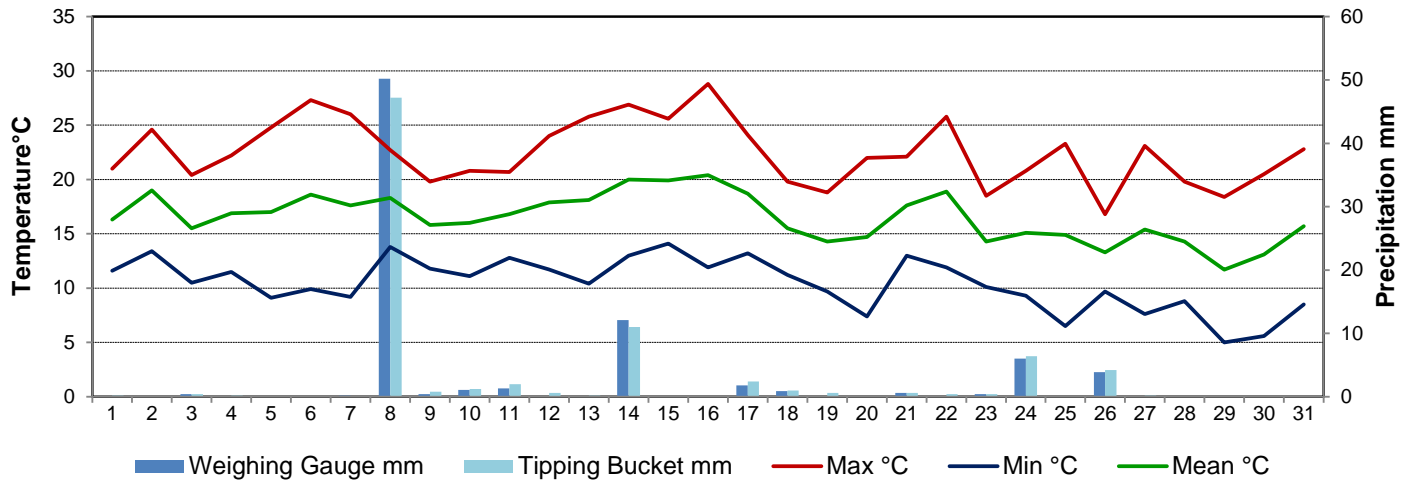
August 2016

Day	Temperature			Degree-days			Precipitation			Relative Humidity		Station Pressure <i>corrected to sea level</i>	
	Max	Min	Mean	Growing	Heating	Cooling	Weighing Gauge	Tipping Bucket	Notes	Max ½ hr Avg	Min ½ hr Avg	Max ½ hr Avg	Min ½ hr Avg
	°C	°C	°C	5°C base	18°C base	18°C base	mm	mm		%	%	mbar	mbar
1	21.0	11.6	16.3	11.3	1.7	0.0	0.0	0.2		91	55	1008	1006
2	24.6	13.4	19.0	14.0	0.0	1.0	0.0	0.0		89	44	1012	1009
3	20.4	10.5	15.5	10.5	2.5	0.0	0.4	0.4		94	62	1012	1008
4	22.2	11.5	16.9	11.9	1.1	0.0	0.0	0.2		89	39	1015	1009
5	24.8	9.1	17.0	12.0	1.0	0.0	0.0	0.0		92	39	1019	1015
6	27.3	9.9	18.6	13.6	0.0	0.6	0.0	0.0		94	35	1019	1017
7	26.0	9.2	17.6	12.6	0.4	0.0	0.2	0.0		94	35	1017	1009
8	22.7	13.8	18.3	13.3	0.0	0.3	50.2	47.2		93	63	1009	1004
9	19.8	11.8	15.8	10.8	2.2	0.0	0.4	0.8		92	72	1013	1008
10	20.8	11.1	16.0	11.0	2.0	0.0	1.1	1.2		92	63	1013	1010
11	20.7	12.8	16.8	11.8	1.2	0.0	1.3	2.0		93	62	1013	1009
12	24.0	11.7	17.9	12.9	0.1	0.0	0.1	0.6		94	54	1015	1012
13	25.8	10.4	18.1	13.1	0.0	0.1	0.0	0.2		94	42	1015	1012
14	26.9	13.0	20.0	15.0	0.0	2.0	12.1	11.0		92	44	1012	1010
15	25.6	14.1	19.9	14.9	0.0	1.9	0.0	0.0		89	43	1014	1011
16	28.8	11.9	20.4	15.4	0.0	2.4	0.0	0.0		94	39	1015	1012
17	24.1	13.2	18.7	13.7	0.0	0.7	1.8	2.4		90	40	1014	1012
18	19.8	11.2	15.5	10.5	2.5	0.0	0.9	1.0		89	50	1017	1014
19	18.8	9.7	14.3	9.3	3.7	0.0	0.1	0.6		92	49	1020	1015
20	22.0	7.4	14.7	9.7	3.3	0.0	0.0	0.0		94	45	1016	1007
21	22.1	13.0	17.6	12.6	0.4	0.0	0.6	0.6		91	58	1006	1002
22	25.8	11.9	18.9	13.9	0.0	0.9	0.0	0.4		93	49	1002	999
23	18.5	10.1	14.3	9.3	3.7	0.0	0.4	0.4		93	56	1011	1002
24	20.8	9.3	15.1	10.1	2.9	0.0	6.0	6.4		92	43	1018	1011
25	23.3	6.5	14.9	9.9	3.1	0.0	0.0	0.0		93	38	1018	1013
26	16.8	9.7	13.3	8.3	4.7	0.0	3.9	4.2		94	76	1013	1010
27	23.1	7.6	15.4	10.4	2.6	0.0	0.0	0.2		95	40	1010	1003
28	19.8	8.8	14.3	9.3	3.7	0.0	0.0	0.0		77	54	1019	1001
29	18.4	5.0	11.7	6.7	6.3	0.0	0.0	0.0		91	41	1023	1019
30	20.5	5.6	13.1	8.1	4.9	0.0	0.0	0.0		94	33	1024	1022
31	22.8	8.5	15.7	10.7	2.3	0.0	0.0	0.0		92	48	1023	1014
Total				356.6	56.3	9.9	79.5	80.0					
Avg	22.5	10.4	16.5				272.4	Cumulative ppt					
Extreme	28.8	5.0					50.2	47.2		95	33	1024	999
Date	16	29					8	8		27	30	30	22

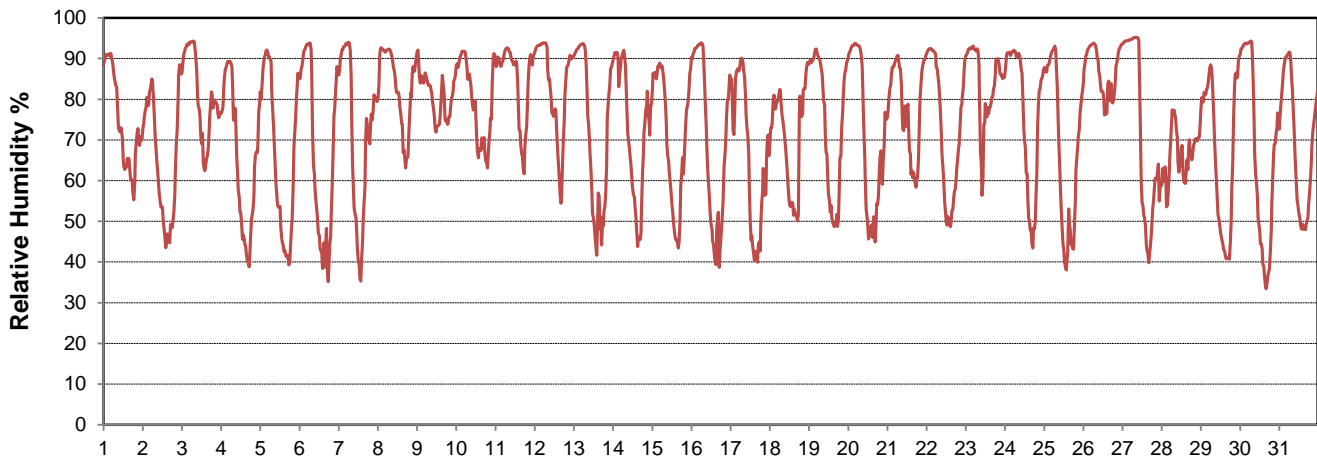
SRC proudly recognizes the following CRS supporters:



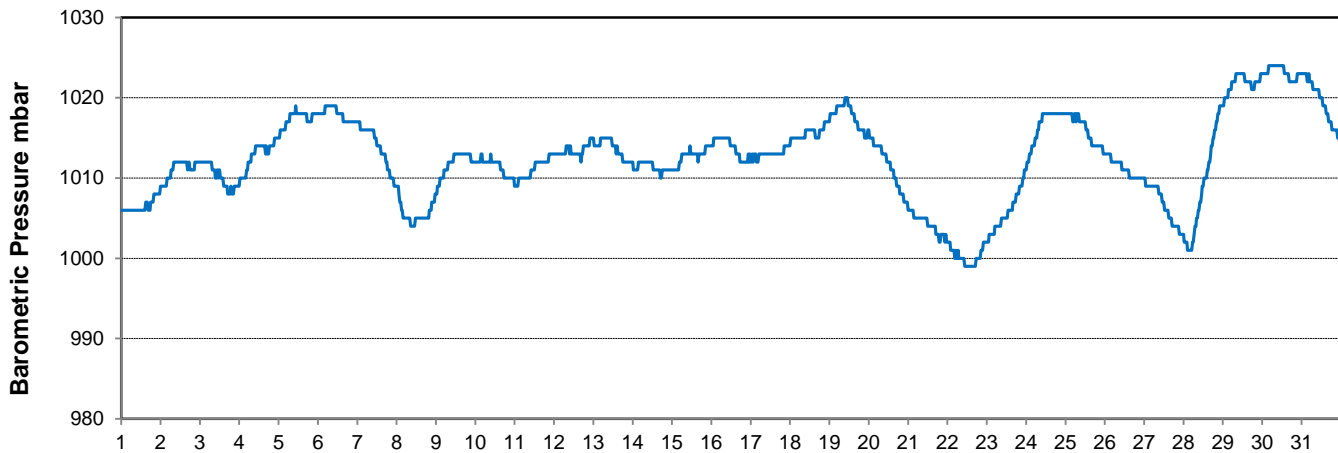
Temperature and Precipitation for August 2016



Relative Humidity for August 2016



Barometric Pressure Corrected to Sea Level for August 2016





SRC CLIMATE REFERENCE STATION DAILY DATA REPORT

CONSERVATION LEARNING CENTRE

Saskatchewan 53.03°N 105.77°W Estab. 2011

Preliminary

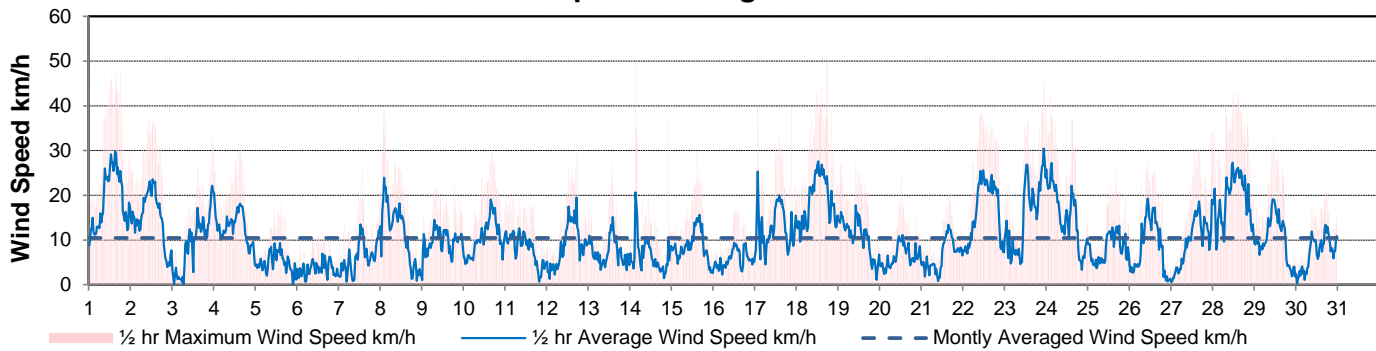
August 2016

Day	Wind Gust			Soil Temperatures at 0900hrs								Soil Moisture	Radiation		
	Max	Direction	Time	Surface	5 cm	10 cm	20 cm	50 cm	100 cm	150 cm	300 cm	0900hrs	Bright Sunshine	Global	Diffuse
	km/h			°C	°C	°C	°C	°C	°C	°C	°C	%	hours	MJ/m ²	MJ/m ²
1	47.6	W	15:16	15.0	17.0	17.0	17.0	15.5	13.0	11.0	6.0	29	7.7	14.4	10.5
2	38.0	NW	11:12	18.5	17.0	16.5	17.0	16.0	13.5	11.5	6.5	28	13.1	21.7	9.4
3	34.1	N	22:42	16.0	16.5	16.5	17.0	16.0	13.5	11.5	7.0	28	0.8	8.9	7.3
4	31.8	WNW	15:01	15.0	16.5	16.5	16.5	15.5	13.5	11.5	7.0	28	14.1	23.3	12.5
5	18.4	NE	15:10	16.5	15.5	16.0	16.5	15.5	13.5	11.5	7.0	27	13.3	24.6	11.0
6	12.6	SSE	18:43	17.5	16.5	16.5	16.5	15.5	13.5	11.5	7.0	26	13.3	22.7	9.5
7	25.7	SE	13:48	16.5	16.0	16.0	16.5	15.5	13.5	11.5	7.0	26	8.2	16.6	6.2
8	39.1	ENE	2:02	16.0	16.5	16.5	16.5	15.5	13.5	11.5	7.0	34	3.3	10.1	8.9
9	22.1	ESE	18:30	14.0	16.0	16.0	16.5	15.5	13.5	11.5	7.0	33	2.7	10.6	9.0
10	30.0	ESE	16:17	16.5	16.0	16.0	16.0	15.5	13.5	11.5	7.0	33	1.9	11.5	9.6
11	20.5	E	3:02	14.5	16.5	16.5	16.5	15.5	13.5	11.5	7.0	33	3.9	10.8	9.1
12	32.1	NNE	17:11	17.5	16.0	16.0	16.0	15.5	13.5	11.5	7.0	33	7.2	17.0	11.3
13	27.3	NW	14:16	15.5	16.0	16.0	16.5	15.5	13.5	12.0	7.5	32	12.7	20.5	8.6
14	50.9	W	3:18	18.0	16.5	16.0	16.0	15.5	13.5	11.5	7.0	34	10.1	21.4	8.1
15	29.8	NW	14:57	18.5	17.5	17.0	17.0	15.5	13.5	12.0	7.5	33	11.6	21.5	8.0
16	17.3	WSW	13:12	18.0	17.0	17.0	17.0	16.0	13.5	12.0	7.5	33	12.6	20.4	9.2
17	40.5	N	1:44	17.0	17.5	17.5	17.0	16.0	13.5	12.0	7.5	33	10.2	20.0	9.8
18	50.7	NNW	17:56	15.5	17.0	17.0	17.0	16.0	14.0	12.0	7.5	32	11.1	19.0	11.0
19	27.3	NNW	10:03	12.5	16.5	16.5	16.5	16.0	14.0	12.0	7.5	32	6.6	16.7	10.9
20	25.0	SW	12:40	13.0	15.5	15.5	16.0	16.0	14.0	12.0	7.5	32	5.8	15.1	8.9
21	20.3	ENE	15:37	16.5	16.5	16.5	16.5	15.5	14.0	12.0	7.5	32	5.2	11.5	10.1
22	38.8	ESE	11:11	15.0	16.0	16.0	16.0	15.5	14.0	12.0	7.5	32	11.0	19.6	9.7
23	46.0	NE	23:05	13.5	16.0	16.5	16.5	15.5	14.0	12.0	8.0	31	5.2	13.9	7.7
24	42.6	NNE	2:33	12.0	15.0	15.0	15.5	14.5	13.0	11.5	7.0	32	7.0	13.9	11.1
25	26.7	W	16:22	13.5	14.0	14.5	15.5	15.5	14.0	12.0	8.0	32	11.1	19.1	13.4
26	28.7	NW	10:47	14.5	15.5	15.5	15.5	15.0	14.0	12.0	8.0	31	1.7	10.6	9.2
27	34.2	SSE	23:59	14.0	15.0	15.0	15.5	15.0	13.5	12.0	8.0	31	8.5	16.6	12.4
28	43.3	WSW	14:45	17.0	16.0	16.0	16.0	15.0	13.5	12.0	8.0	31	6.5	14.1	11.1
29	32.9	NW	11:24	10.5	14.5	15.0	15.5	15.0	13.5	12.0	8.0	31	12.5	20.8	18.1
30	20.8	E	17:20	11.0	13.5	14.0	15.0	15.0	13.5	12.5	8.0	30	12.9	19.4	12.3
31	42.2	ESE	12:47	13.0	14.0	14.0	14.5	14.5	13.5	12.0	8.0	30	12.6	37.4	26.4
Total													264.4	543.7	330.3
Mean				15.2	16.0	16.0	16.2	15.5	13.6	11.8	7.4	31.0			
Extreme	50.9	W	3:18												
Date	14														

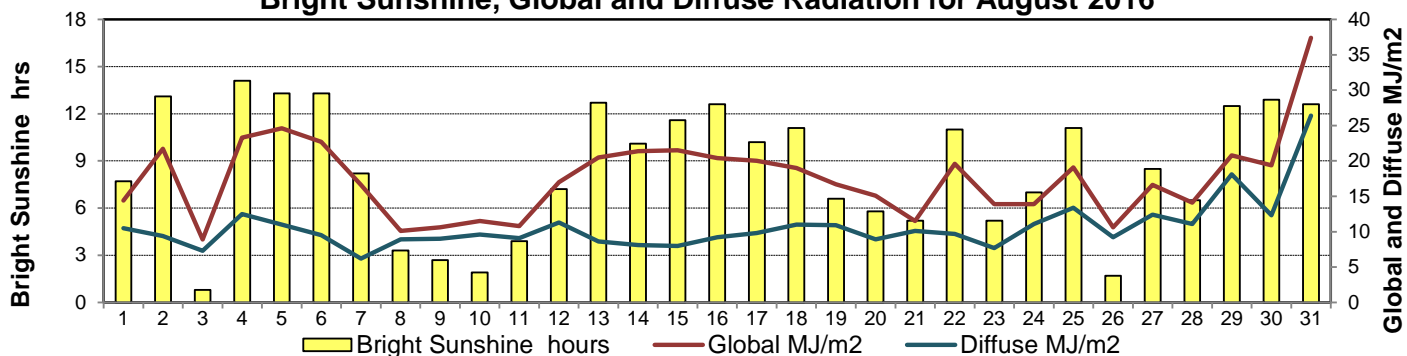
GLOSSARY OF TERMS

Degree-days	Radiation
Tm Mean Temperature	Bright Sunshine is the unobstructed direct radiation from the sun, as opposed to the shading of a location by clouds or by other atmospheric obstructions.
Growing (Tm-5°C); if Tm ≤ 5°C then GDD = 0	
Heating (18°C-Tm); if Tm ≥ 18°C then HDD = 0	
Cooling (Tm-18°C); if Tm ≤ 18°C then CDD = 0	Diffuse is radiation reaching the earth's surface after having been scattered from the direct solar beam
T Trace of Precipitation	Global is the sum of the direct solar and diffuse radiation
SOG Depth of snow-on-the-ground	
Red Cell no data available	Relative Humidity The ratio of the air's water vapour content of its water vapour capacity which changes with temperature.
Red Number manual calculation	Air Pressure The force exerted by the weight of a column of air above a given point
	Wind Gust The daily highest instantaneous value recorded irrespective of direction and/or duration

Wind Speed for August 2016

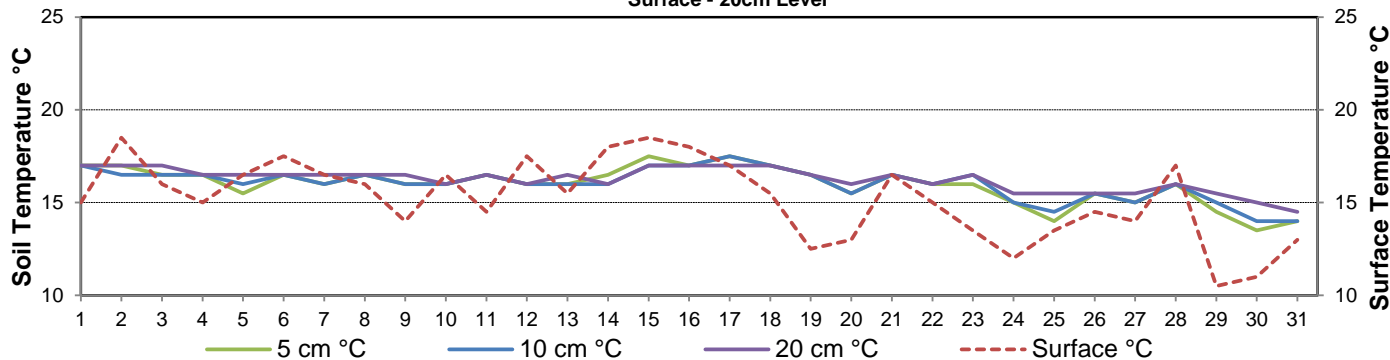


Bright Sunshine, Global and Diffuse Radiation for August 2016



Soil Temperatures for August 2016

Surface - 20cm Level



Soil Temperatures for August 2016

50 - 300cm Level

