



SRC CLIMATE REFERENCE STATION DAILY DATA REPORT

SASKATOON STATION 4057180

52°09' N 106°36' W 497 m asl Estab. 1963

Preliminary FEBRUARY 2016

Day	Temperature						Degree-days			Precipitation			Relative Humidity		Station Pressure (sea level)	
	Max	Normal Max	Min	Normal Min	Mean	Normal Mean	Growing	Heating	Cooling	Weighing Gauge	Notes	Snow-on-Ground 0900h	Max ½ hr Avg	Min ½ hr Avg	Max ½ hr Avg	Min ½ hr Avg
	°C	1981-2010	°C	1981-2010	°C	1981-2010	5°C base	18°C base	18°C base	mm		cm	%	%	mbar	mbar
1	-7.4	-9.1	-13.2	-19.4	-10.3	-14.2	0.0	28.3	0.0	0.2		10	90	73	1019	1011
2	-4.5	-9.8	-15.7	-18.2	-10.1	-14.0	0.0	28.1	0.0	0.2		11	94	76	1019	1015
3	-6.1	-9.7	-10.4	-19.5	-8.3	-14.6	0.0	26.3	0.0	0.2		12	94	80	1016	1013
4	-8.4	-8.2	-12.3	-18.7	-10.4	-13.5	0.0	28.4	0.0	0.1		12	92	86	1019	1013
5	-1.0	-6.9	-13.6	-16.0	-7.3	-11.5	0.0	25.3	0.0	0.0	Manual SOG 13 cm	11	92	67	1019	1004
6	5.6	-6.8	-1.4	-16.5	2.1	-11.7	0.0	15.9	0.0	0.0		11	85	54	1005	994
7	0.3	-8.8	-5.9	-19.2	-2.8	-14.0	0.0	20.8	0.0	0.1		10	79	67	1025	1006
8	0.3	-9.7	-8.4	-19.1	-4.1	-14.4	0.0	22.1	0.0	0.0		10	93	67	1027	1022
9	-1.2	-10.6	-5.4	-20.5	-3.3	-15.5	0.0	21.3	0.0	0.1	light snow pellets	10	92	85	1023	1010
10	-3.4	-9.9	-10.5	-19.8	-7.0	-14.9	0.0	25.0	0.0	0.0		10	96	84	1022	1010
11	-10.4	-8.7	-15.9	-18.9	-13.2	-13.8	0.0	31.2	0.0	0.0	scattered flurries	10	91	75	1031	1021
12	-14.0	-6.7	-21.3	-18.2	-17.7	-12.4	0.0	35.7	0.0	0.3	Manual SOG 11 cm	10	88	67	1034	1021
13	-4.6	-7.4	-14.1	-17.1	-9.4	-12.3	0.0	27.4	0.0	2.0	snow	10	93	75	1020	1006
14	3.6	-9.3	-8.7	-19.1	-2.6	-14.2	0.0	20.6	0.0	0.0		11	95	67	1006	1002
15	-0.6	-7.9	-8.1	-18.3	-4.4	-13.1	0.0	22.4	0.0	2.0	snow	11	95	85	1011	1000
16	-1.2	-6.9	-5.7	-15.4	-3.5	-11.1	0.0	21.5	0.0	0.0		12	93	85	1011	1008
17	6.7	-7.2	-6.4	-16.5	0.2	-11.8	0.0	17.8	0.0	0.0	manual SOG 15 cm	12	98	56	1010	1002
18	0.7	-6.8	-2.9	-16.6	-1.1	-11.7	0.0	19.1	0.0	0.0	mist	11	99	94	1001	988
19	0.9	-4.7	-11.5	-15.1	-5.3	-9.9	0.0	23.3	0.0	0.1	snow	11	98	72	1010	987
20	-11.2	-4.6	-16.2	-14.9	-13.7	-9.8	0.0	31.7	0.0	0.5	snow	11	87	72	1025	1010
21	-2.4	-3.6	-14.5	-13.5	-8.5	-8.5	0.0	26.5	0.0	0.0		12	95	78	1024	1014
22	-2.7	-4.9	-7.9	-14.4	-5.3	-9.6	0.0	23.3	0.0	0.2		11	97	72	1014	1009
23	0.6	-5.6	-8.6	-15.7	-4.0	-10.7	0.0	22.0	0.0	0.0		11	87	65	1017	1014
24	-1.3	-5.9	-7.3	-15.6	-4.3	-10.7	0.0	22.3	0.0	0.0		11	92	68	1026	1016
25	3.0	-5.6	-10.9	-15.5	-4.0	-10.6	0.0	22.0	0.0	0.0	manual SOG 15 cm	11	93	57	1026	1014
26	4.7	-6.1	-4.1	-15.8	0.3	-11.0	0.0	17.7	0.0	0.0		11	84	57	1014	1004
27	-0.5	-5.0	-11.9	-15.7	-6.2	-10.4	0.0	24.2	0.0	1.6	snow	11	94	84	1009	1001
28	0.2	-4.4	-18.5	-13.5	-9.2	-9.0	0.0	27.2	0.0	0.0		12	91	56	1019	1005
29	-15.2	-4.5	-23.3	-13.8	-19.3	-9.1	0.0	37.3	0.0	0.1		10	68	37	1022	1019
Total							0.0	714.7	0.0	7.7			Extreme / Date	Extreme / Date	Extreme / Date	Extreme / Date
Avg	-2.4	-7.1	-10.8	-16.9	-6.6	-12.0	1981-2010 Normal			9.3	Normal					
Extreme Date	6.7		-23.3				0.0	848.2	0.0	28.1	Cumulative		99	37	1034	987
	17		29							24.8	Cum. Normal		18	29	12	19

Note: Red numbers indicate manual calculation; Red cell indicate data not available

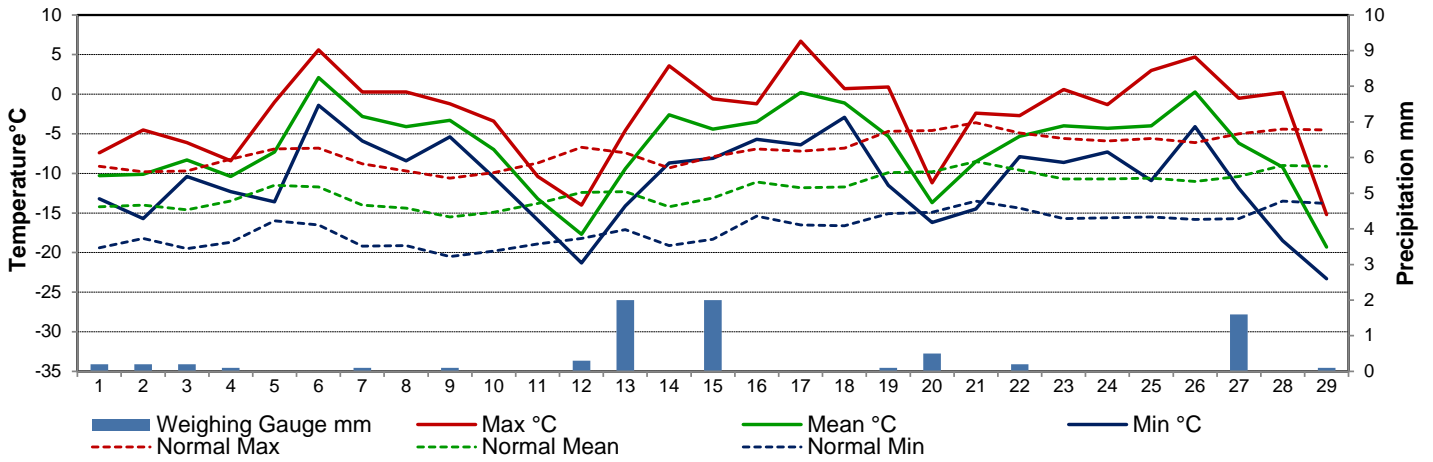
SRC proudly recognizes the following CRS supporters:



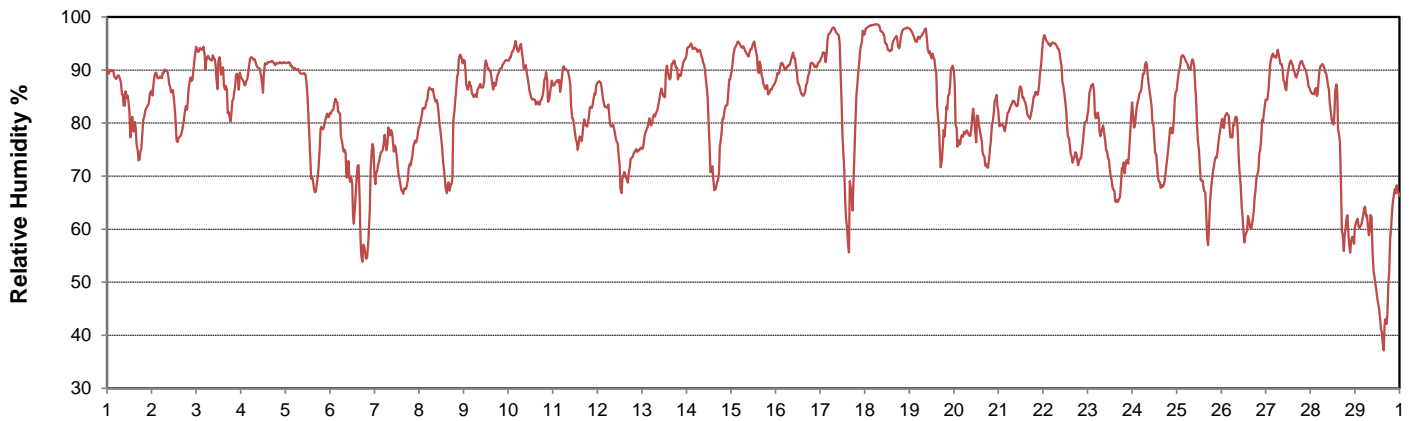
Agriculture and Agri-Food Canada Agriculture et Agroalimentaire Canada



Temperature and Precipitation for February 2016



Relative Humidity for February 2016



Barometric Pressure Corrected to Sea Level for February 2016





SRC CLIMATE REFERENCE STATION DAILY DATA REPORT

SASKATOON STATION 4057180

52°09' N 106°36' W 497 m asl Estab. 1963

Preliminary **FEBRUARY 2016**

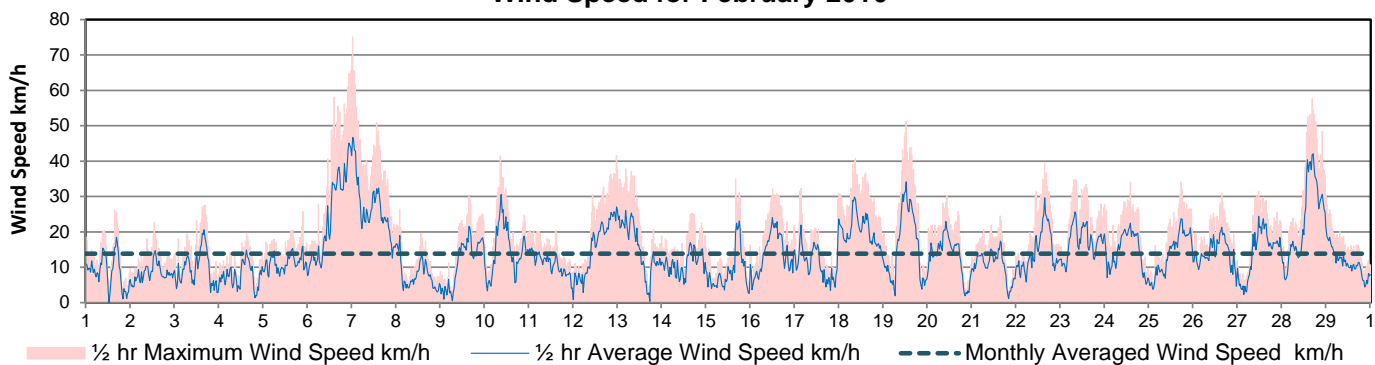
Day	Wind Gust			Soil Temperatures at 0900hrs								Soil Moisture 30 cm 0900hrs %	Radiation				
	Max	Direction	Time	Surface	5 cm	10 cm	20 cm	50 cm	100 cm	150 cm	300 cm		Bright Sunshine	Possible	% Possible	Global	Diffuse
	km/h			°C	°C	°C	°C	°C	°C	°C	°C		hours	hours		MJ/m ²	MJ/m ²
1	26.1	WNW	15:27	-10.0	-1.0	-1.0	-1.0	0.0	2.0	3.5	5.5	10.7	0.0	9.1	0.0	2.9	2.5
2	22.7	S	12:47	-11.5	-1.5	-1.0	-1.0	0.0	2.0	3.5	5.5	10.3	1.9	9.2	20.7	4.2	2.9
3	27.5	WNW	15:33	-8.0	-1.5	-1.0	-1.0	0.5	2.0	3.5	5.5	10.4	2.2	9.2	23.9	4.2	2.6
4	19.6	NNE	14:41	-13.0	-1.5	-1.0	-1.0	0.5	2.0	3.5	5.5	10.3	1.9	9.3	20.5	4.6	3.2
5	25.8	SSE	21:03	-14.5	-1.5	-1.5	-1.0	0.5	2.0	3.5	5.5	10.2	6.7	9.3	71.7	6.8	2.9
6	69.5	NNW	23:53	2.0	-1.5	-1.0	-1.0	0.5	2.0	3.0	5.5	10.5	2.4	9.4	25.5	4.6	3.1
7	75.1	NW	0:14	-5.0	-0.5	-0.5	-0.5	0.5	2.0	3.0	5.5	10.8	9.2	9.5	97.3	7.1	1.1
8	26.3	NW	1:52	-7.5	-1.0	-0.5	-0.5	0.5	2.0	3.0	5.5	10.6	0.9	9.5	9.5	3.9	3.2
9	29.9	SE	15:27	-4.5	-1.0	-1.0	-0.5	0.5	2.0	3.0	5.5	10.7	1.3	9.6	13.6	3.8	2.9
10	41.5	N	8:12	-5.0	-1.0	-0.5	-0.5	0.5	2.0	3.0	5.5	10.7	0.0	9.6	0.0	3.3	2.8
11	20.5	ENE	0:18	-14.0	-1.0	-1.0	-0.5	0.5	2.0	3.0	5.5	10.4	2.4	9.7	24.7	5.3	3.9
12	41.5	SSE	4:17	-20.5	-1.5	-1.0	-1.0	0.5	2.0	3.0	5.0	9.8	7.4	9.8	75.7	8.8	2.6
13	37.8	SE	23:21	-9.5	-2.0	-1.5	-1.0	0.5	2.0	3.0	5.0	9.5	0.0	9.8	0.0	2.8	2.3
14	25.3	W	15:59	-8.0	-2.0	-1.5	-1.0	0.5	2.0	3.0	5.0	9.7	6.0	9.9	60.7	7.8	2.0
15	34.9	NNE	15:59	-6.5	-1.5	-1.5	-1.0	0.0	2.0	3.0	5.0	10.0	0.0	10.0	0.0	2.4	1.7
16	32.2	SE	11:53	-5.5	-1.5	-1.0	-1.0	0.0	2.0	3.0	5.0	10.1	1.3	10.0	13.0	5.6	4.3
17	32.3	WSW	3:00	-4.0	-1.0	-1.0	-1.0	0.0	2.0	3.0	5.0	10.3	8.4	10.1	83.3	8.6	2.1
18	40.8	SE	8:43	-0.5	-1.0	-1.0	-0.5	0.5	2.0	3.0	5.0	10.5	0.0	10.2	0.0	3.4	2.9
19	51.2	N	12:11	-0.5	-1.0	-0.5	-0.5	0.5	2.0	3.0	5.0	10.8	0.5	10.2	4.9	3.9	3.2
20	30.4	NE	10:04	-14.0	-1.0	-0.5	-0.5	0.5	2.0	3.0	5.0	10.5	3.6	10.3	35.0	6.2	4.0
21	24.5	WNW	15:26	-9.5	-1.5	-1.0	-0.5	0.5	2.0	3.0	5.0	10.3	0.5	10.3	4.8	4.4	3.7
22	39.4	WNW	15:16	-8.5	-1.5	-1.0	-1.0	0.5	2.0	3.0	5.0	10.4	9.8	10.4	94.1	11.2	3.8
23	34.8	WNW	7:26	-6.5	-1.5	-1.0	-1.0	0.5	2.0	3.0	5.0	10.4	9.2	10.5	87.8	10.1	1.9
24	34.1	NW	13:41	-8.0	-1.5	-1.0	-1.0	0.5	2.0	3.0	5.0	10.4	10.0	10.5	94.9	11.1	4.6
25	34.1	WSW	17:27	-11.5	-1.5	-1.0	-1.0	0.5	2.0	3.0	5.0	10.3	7.7	10.6	72.6	9.7	4.4
26	30.9	WSW	15:06	-4.5	-1.5	-1.0	-1.0	0.5	2.0	3.0	5.0	10.4	10.0	10.7	93.7	11.0	1.6
27	31.5	NE	11:17	-3.5	-1.0	-0.5	-0.5	0.5	2.0	3.0	5.0	10.8	0.0	10.7	0.0	4.1	3.4
28	57.6	NNE	16:01	-4.5	-1.0	-0.5	-0.5	0.5	2.0	3.0	5.0	10.6	4.1	10.8	37.9	7.2	3.8
29	27.7	NE	0:04	-23.0	-1.5	-1.0	-0.5	0.5	2.0	3.0	5.0	9.9	10.1	10.9	92.9	12.3	1.5
Total													117.5	289.06	40.6	181.3	84.9
Mean				-8.3	-1.3	-0.9	-0.8	0.4	2.0	3.1	5.2	10.4	1981-2010 Normal for Radiation				
Extreme	75.1	NW	0:14	1971- 2000 Normal for Soil Temperatures									132.6	281.1	47.2	213.0	104.0
Date	7				-7.0	-6.7	-6.1	-3.5	-0.8	0.8	3.4		No. of Bright Sunshine days = 23				

Note: Red numbers indicate manual calculation; Red cell indicate data not available

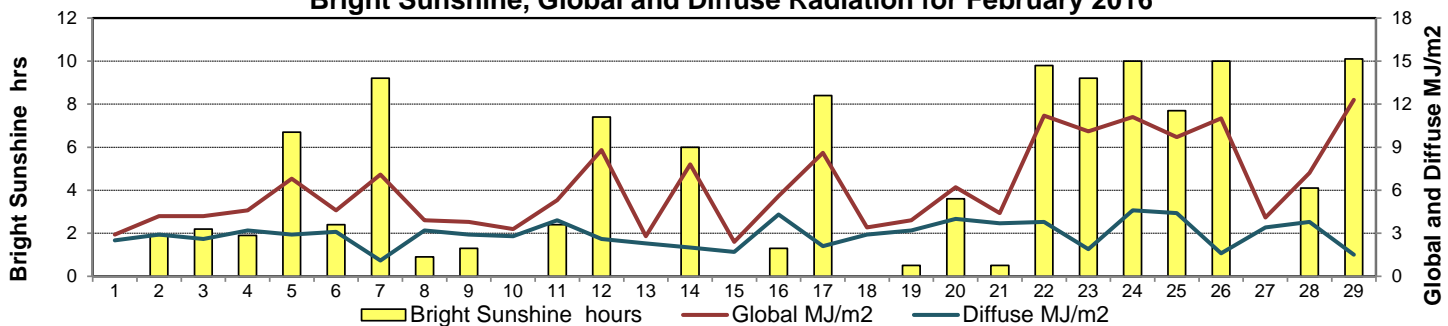
SRC proudly recognizes the following CRS supporters:



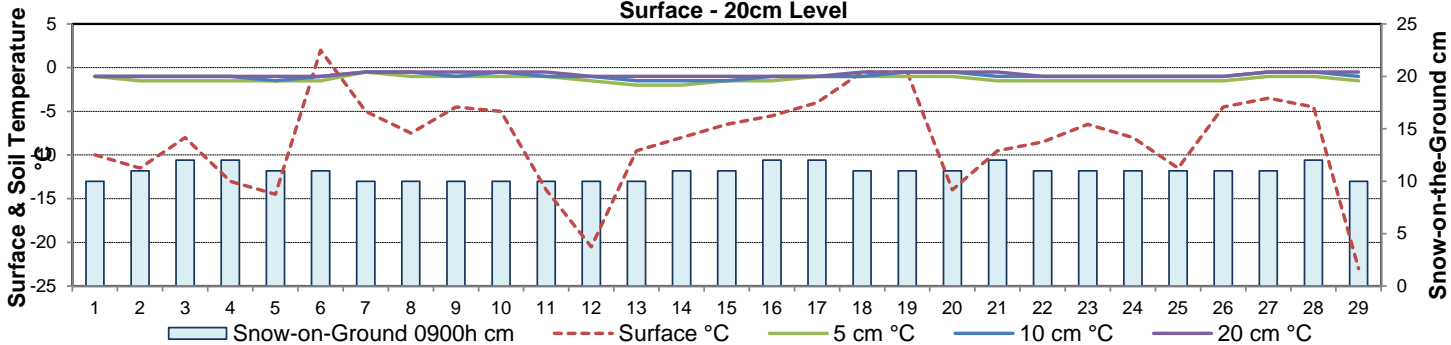
Wind Speed for February 2016



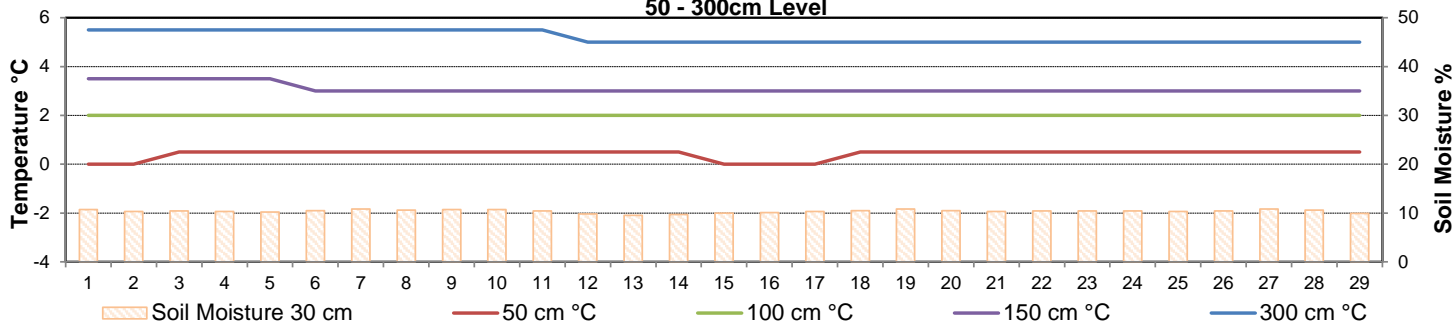
Bright Sunshine, Global and Diffuse Radiation for February 2016



**Soil Temperatures for February 2016
Surface - 20cm Level**



**Soil Temperatures for February 2016
50 - 300cm Level**





SRC CLIMATE REFERENCE STATION DAILY DATA REPORT

SASKATOON STATION 4057180

52°09' N 106°36' W 497 m asl Estab. 1963

Preliminary **FEBRUARY 2016**

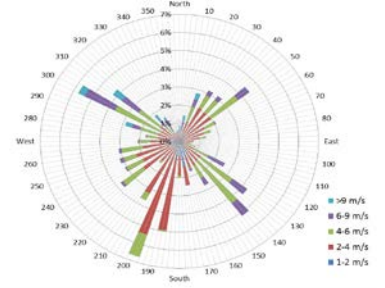
Extreme Records for February

Max/Min Temperature °C				Precipitation - Monthly mm				Wind Monthly km/h				CRS Bright Sunshine - Monthly			
S'toon Area	Date	Site	S'toon CRS Date	S'toon Area	Date	Site	S'toon CRS Date	S'toon Airport	Date	S'toon CRS**	Date	Hours	Year	No. of Days	Year
12.8	19/1931	SE	8.3 02/2005	43.7	1924	SE	40.2 1979	106 ^N	22/1988	82.3 ^{NNW}	10/2004	186.9	1980	28	1978&84
-50.0	01/1893	SM	-41.1 06/1972	0.0	multiply sites		1.9 2012					57.6	1983	17	1983&98

**1975 forward * more than one year

Notable Events for CRS Saskatoon - February						Saskatoon Area Stations			Glossary	
Element	Type	Day	New Record	Old Record	Year	SM	NWMP	c. 1892-1901	T	Trace of precipitation
Temperature	Highest Daily Minimum	6	-1.4	-2.1	1996	SE	Eby	1901-1941	Normal	30 year average beginning with the decade
		9	-5.4	-6.5	2006	US	Univ. of Sask.	1915-1964	SOG	Depth of snow-on-the-ground in cm
		18	-2.9	-2.9	1998	S	Saskatoon	1941-1942	na	not available
	Highest Daily Mean	6	2.1	1.5	1996	SA	Saskatoon A	1942 -	Degree-days	
		18	-1.1	-1.8	1998	NRC	Nat. Res. Council	1952-1966	Tm	Mean Temperature
	Seasonal Average Minimum (winter)		-12.6	-12.6	2012	SRC	Sask. Res. Council	1963-	Growing	(Tm-5°C); if Tm ≤ 5°C then GDD = 0
						SWT	S'toon Water Treatment Plant	1974 -	Heating	(18°C-Tm); if Tm ≤ 18°C then HDD = 0
						SC	S'toon Central Ave	1974-1989	Cooling	(Tm-18°C); if Tm ≥ 18°C then CDD = 0
						S1	Saskatoon 1	1976-1978	Extreme Cooling	(Tm-24°C); if Tm ≥ 24°C then CDD = 0
						S2	Saskatoon 2	1977-1990		
					K	S'toon Kernen Farm	1993-2004			
					KCS	S'toon Kernen Farm CS	1996-			
					RCS	Environment Canada	2008-			
					SF	Sutherland Forestry	1943-1970			

Wind Speed and Direction Saskatoon February 2016



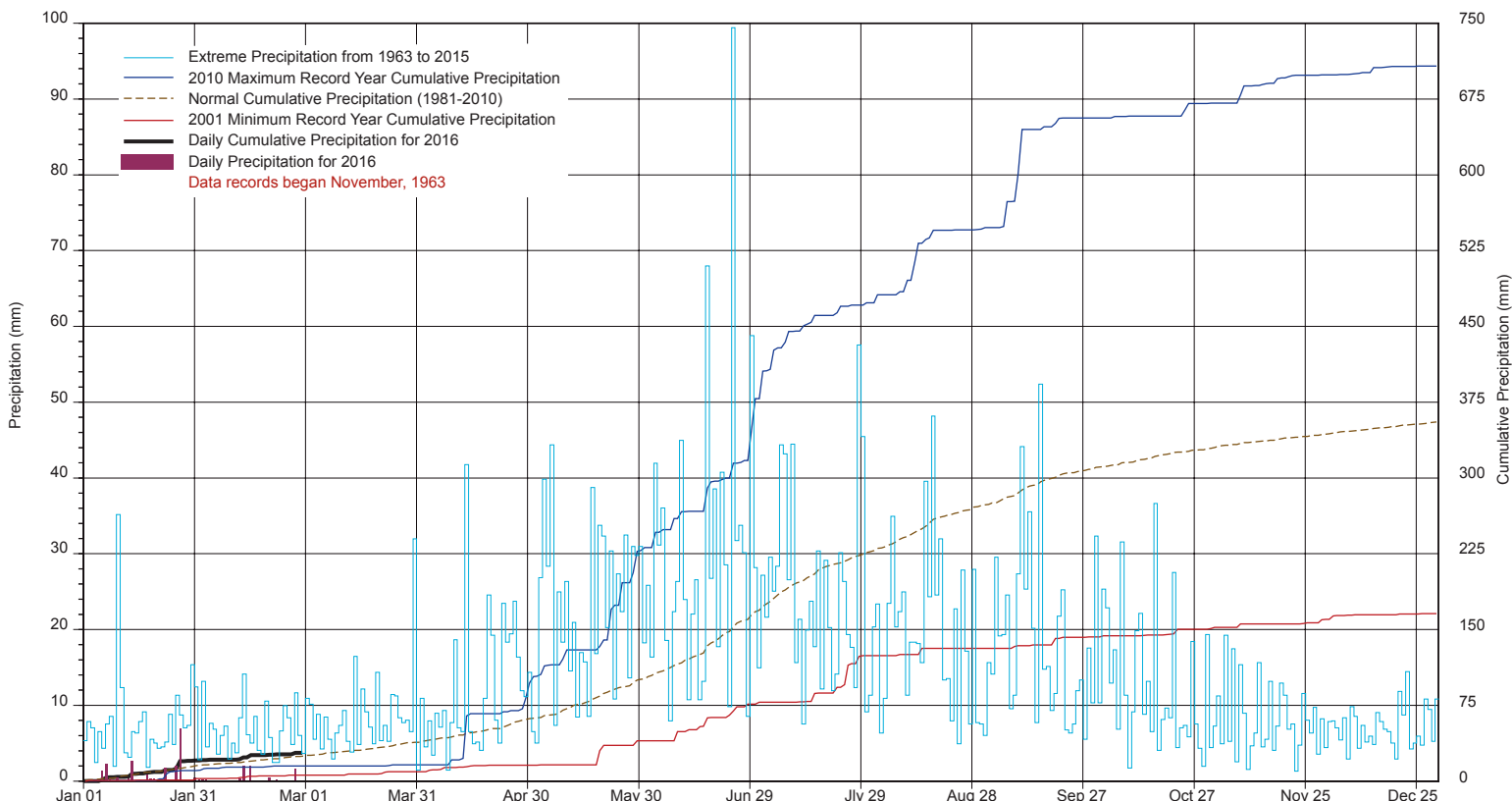
SRC proudly recognizes the following CRS supporters:



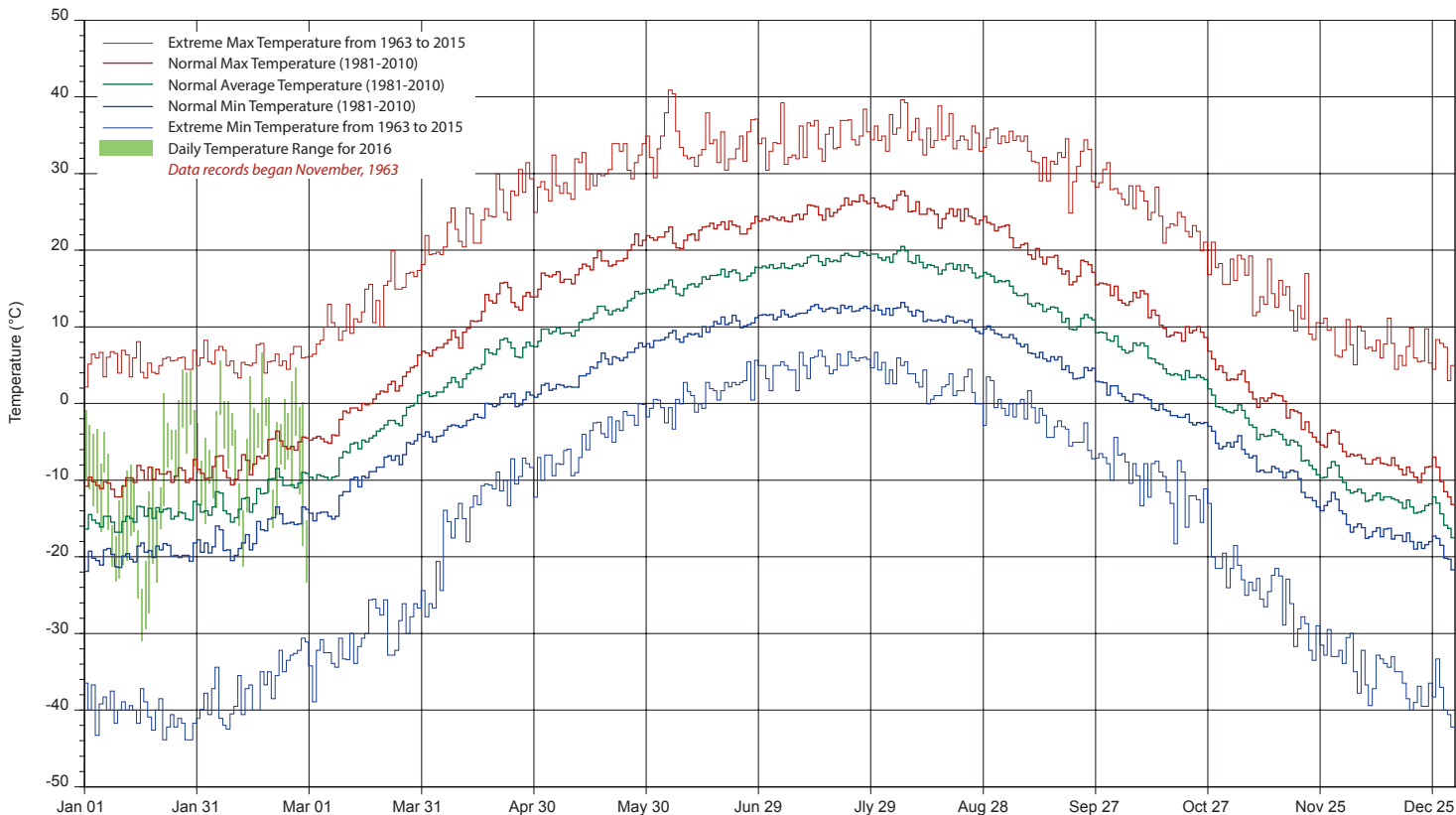
Agriculture and Agri-Food Canada / Agriculture et Agroalimentaire Canada



SASKATCHEWAN RESEARCH COUNCIL SASKATOON CLIMATE REFERENCE STATION 2016 PRECIPITATION AND NORMALS



2016 TEMPERATURES AND NORMALS



SRC proudly recongnizes the following CRS supporters:

