



SRC CLIMATE REFERENCE STATION DAILY DATA REPORT

SASKATOON STATION 4057180

52°09' N 106°36' W 497 m asl Estab. 1963

Preliminary **JANUARY 2016**

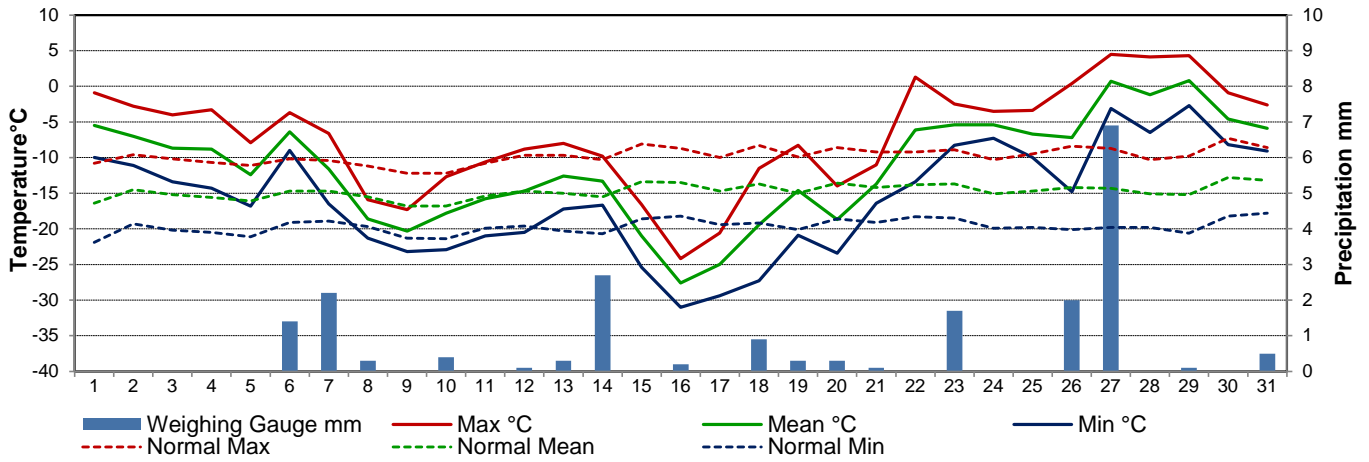
Day	Temperature						Degree-days			Precipitation			Relative Humidity		Station Pressure (sea level)	
	Max	Normal Max	Min	Normal Min	Mean	Normal Mean	Growing	Heating	Cooling	Weighing Gauge	Notes	Snow-on-Ground 0900h	Max ½ hr Avg	Min ½ hr Avg	Max ½ hr Avg	Min ½ hr Avg
	°C	1981-2010	°C	1981-2010	°C	1981-2010	5°C base	18°C base	18°C base	mm		cm	%	%	mbar	mbar
1	-0.9	-10.8	-10.0	-21.9	-5.5	-16.4	0.0	23.5	0.0	0.0		8	83	50	1018	1015
2	-2.8	-9.6	-11.1	-19.3	-7.0	-14.5	0.0	25.0	0.0	0.0		9	87	60	1023	1018
3	-4.0	-10.2	-13.4	-20.2	-8.7	-15.2	0.0	26.7	0.0	0.0		9	86	60	1023	1016
4	-3.3	-10.7	-14.3	-20.5	-8.8	-15.6	0.0	26.8	0.0	0.0	Manual SOG 8cm	8	84	63	1015	1008
5	-7.9	-11.1	-16.8	-21.1	-12.4	-16.1	0.0	30.4	0.0	0.0		8	89	76	1015	1012
6	-3.7	-10.2	-9.0	-19.1	-6.4	-14.7	0.0	24.4	0.0	1.4		9	93	80	1014	1011
7	-6.6	-10.4	-16.5	-18.9	-11.6	-14.7	0.0	29.6	0.0	2.2		10	94	82	1022	1011
8	-15.9	-11.2	-21.3	-19.7	-18.6	-15.5	0.0	36.6	0.0	0.3		10	86	75	1025	1022
9	-17.3	-12.2	-23.2	-21.3	-20.3	-16.8	0.0	38.3	0.0	0.0		11	84	77	1025	1018
10	-12.7	-12.2	-22.9	-21.4	-17.8	-16.8	0.0	35.8	0.0	0.4		11	84	79	1017	1011
11	-10.6	-10.8	-21.0	-19.9	-15.8	-15.4	0.0	33.8	0.0	0.0		11	88	71	1018	1011
12	-8.8	-9.7	-20.5	-19.6	-14.7	-14.7	0.0	32.7	0.0	0.1		11	89	80	1018	1005
13	-8.0	-9.7	-17.2	-20.3	-12.6	-15.0	0.0	30.6	0.0	0.3	Manual SOG 15cm	11	93	87	1006	1000
14	-9.8	-10.3	-16.7	-20.7	-13.3	-15.5	0.0	31.3	0.0	2.7		12	90	82	1010	1000
15	-16.6	-8.1	-25.4	-18.6	-21.0	-13.4	0.0	39.0	0.0	0.0		13	84	75	1022	1010
16	-24.2	-8.7	-31.0	-18.2	-27.6	-13.5	0.0	45.6	0.0	0.2		13	80	71	1024	1022
17	-20.6	-10.0	-29.4	-19.4	-25.0	-14.7	0.0	43.0	0.0	0.0		14	81	66	1024	1019
18	-11.5	-8.3	-27.3	-19.2	-19.4	-13.7	0.0	37.4	0.0	0.9		13	89	67	1019	1012
19	-8.3	-9.9	-20.9	-20.1	-14.6	-15.0	0.0	32.6	0.0	0.3		12	90	74	1015	1012
20	-14.0	-8.6	-23.4	-18.6	-18.7	-13.6	0.0	36.7	0.0	0.3		13	86	79	1025	1013
21	-11.0	-9.2	-16.4	-19.1	-13.7	-14.2	0.0	31.7	0.0	0.1		13	89	73	1026	1016
22	1.3	-9.2	-13.4	-18.3	-6.1	-13.8	0.0	24.1	0.0	0.0	Manual SOG 15cm	12	92	72	1015	1000
23	-2.5	-8.9	-8.3	-18.5	-5.4	-13.7	0.0	23.4	0.0	1.7		12	94	69	1010	998
24	-3.5	-10.3	-7.3	-19.9	-5.4	-15.1	0.0	23.4	0.0	0.0		12	96	89	1012	1009
25	-3.4	-9.5	-10.0	-19.8	-6.7	-14.7	0.0	24.7	0.0	0.0		12	96	91	1018	1012
26	0.4	-8.4	-14.8	-20.1	-7.2	-14.2	0.0	25.2	0.0	2.0	freezin rain / rain / snow	12	95	77	1017	1002
27	4.5	-8.7	-3.1	-19.8	0.7	-14.3	0.0	17.3	0.0	6.9		12	96	63	1011	1003
28	4.1	-10.3	-6.5	-19.8	-1.2	-15.1	0.0	19.2	0.0	0.0		11	92	76	1010	989
29	4.3	-9.8	-2.7	-20.6	0.8	-15.2	0.0	17.2	0.0	0.1	Manual SOG 12cm	10	87	61	994	991
30	-0.9	-7.3	-8.2	-18.2	-4.6	-12.8	0.0	22.6	0.0	0.0		10	87	69	1001	994
31	-2.6	-8.6	-9.1	-17.8	-5.9	-13.2	0.0	23.9	0.0	0.5		10	92	77	1010	1001
Total							0.0	912.5	0.0	20.4			Extreme / Date	Extreme / Date	Extreme / Date	Extreme / Date
Avg	-7.0	-9.8	-15.8	-19.7	-11.4	-14.7	1981-2010 Normal			15.5	Normal					
Extreme Date	4.5		-31.0				0.0	1015.1	0.0	20.4	Cumulative		96	50	1026	989
	27		16							15.5	Cumulative Normal		24	1	21	28

Note: Red numbers indicate manual calculation; Red cell indicate data not available

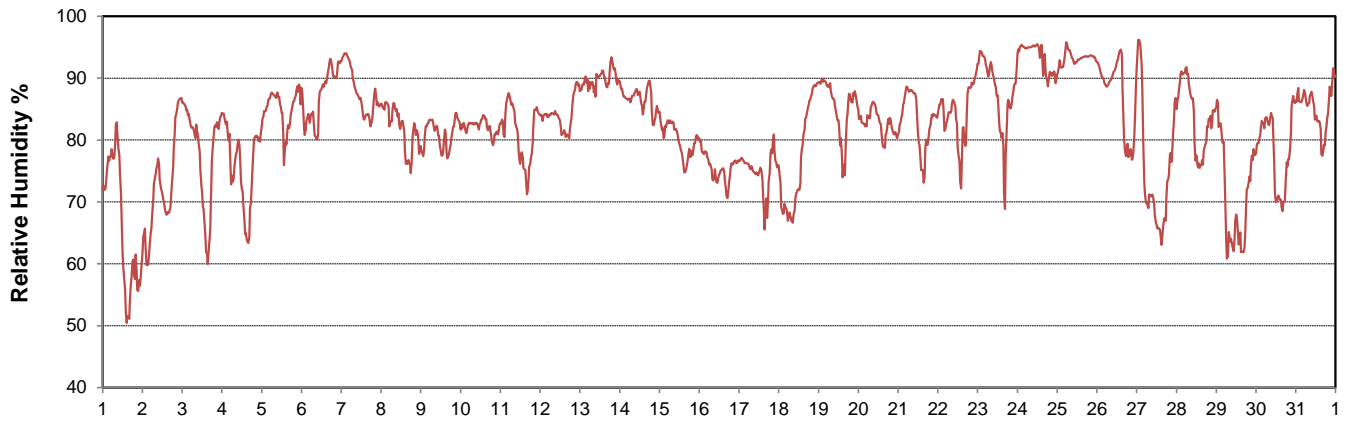
SRC proudly recognizes the following CRS supporters:



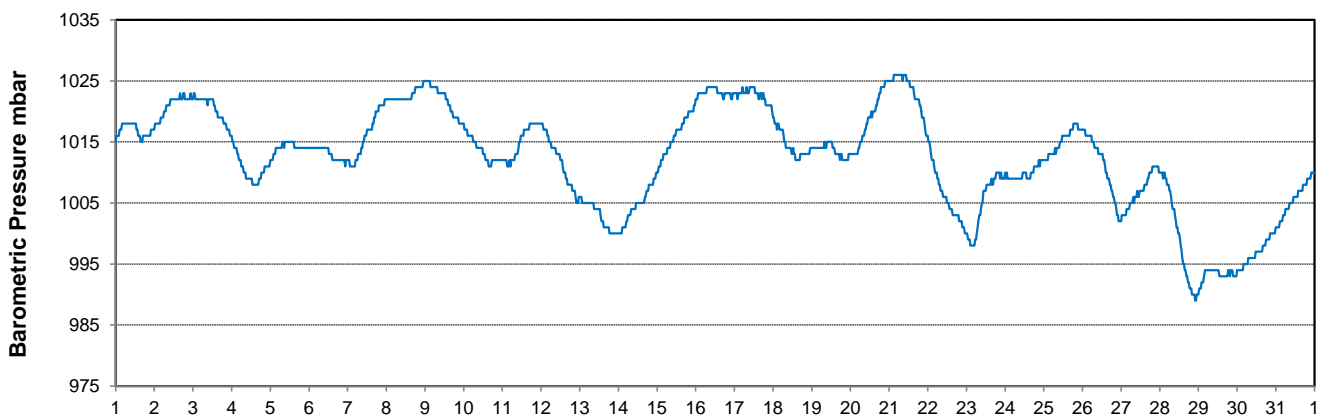
Temperature and Precipitation for January 2016



Relative Humidity for January 2016



Barometric Pressure Corrected to Sea Level for January 2016





SRC CLIMATE REFERENCE STATION DAILY DATA REPORT

SASKATOON STATION 4057180

52°09' N 106°36' W 497 m asl Estab. 1963

Preliminary **JANUARY 2016**

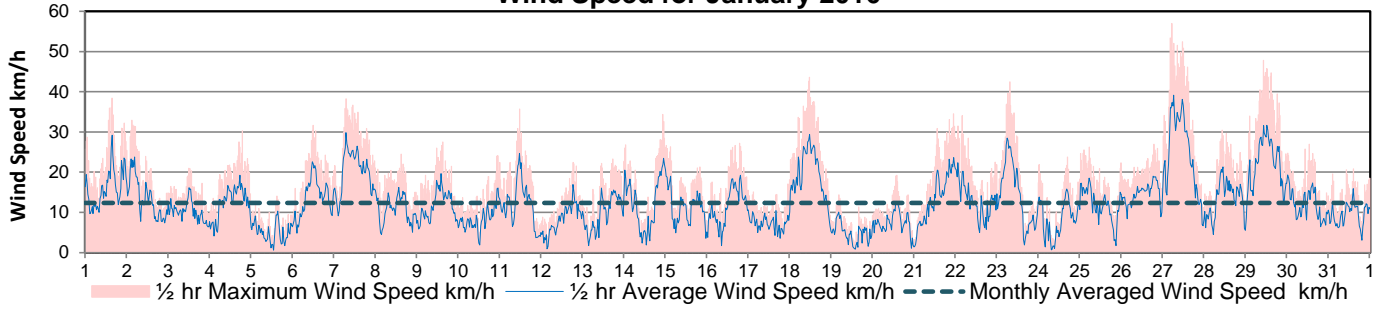
Day	Wind Gust			Soil Temperatures at 0900hrs								Soil Moisture 30 cm	Radiation				
	Max	Direction	Time	Surface	5 cm	10 cm	20 cm	50 cm	100 cm	150 cm	300 cm		0900hrs	Bright Sunshine	Possible	% Possible	Global
	km/h			°C	°C	°C	°C	°C	°C	°C	°C	%	hours	hours		MJ/m ²	MJ/m ²
1	38.4	WSW	15:12	-9.5	-3.0	-2.5	-2.0	1.0	3.5	5.0	7.0	10	7.4	7.8	94.5	3.9	0.7
2	32.9	NW	2:32	-9.0	-3.0	-2.5	-1.5	0.5	3.5	5.0	7.0	10	7.4	7.9	94.3	3.7	0.7
3	21.0	SSW	11:56	-13.5	-3.5	-2.5	-2.0	0.5	3.5	4.5	7.0	10	7.4	7.9	94.0	4.0	0.7
4	30.3	NW	18:43	-7.0	-3.0	-2.5	-2.0	0.5	3.0	4.5	7.0	10	6.6	7.9	83.7	3.5	0.9
5	14.0	NE	14:58	-17.5	-4.0	-3.0	-2.0	0.5	3.0	4.5	7.0	10	0.8	7.9	10.1	2.9	2.0
6	31.7	SE	11:43	-5.0	-3.0	-2.5	-2.0	0.5	3.0	4.5	7.0	10	0.0	7.9	0.0	1.5	1.2
7	38.3	NNE	6:56	-12.5	-2.5	-2.0	-1.5	0.5	3.0	4.5	7.0	10	0.1	8.0	1.3	2.6	2.2
8	24.5	N	14:43	-16.5	-2.0	-2.0	-1.5	0.5	3.0	4.5	7.0	10	0.1	8.0	1.3	1.9	1.7
9	27.5	WSW	14:36	-20.0	-2.5	-2.0	-1.5	0.5	3.0	4.5	6.5	10	2.2	8.0	27.4	3.1	2.2
10	24.1	NNW	22:56	-21.0	-3.0	-2.5	-1.5	0.5	3.0	4.5	6.5	10	1.4	8.1	17.3	2.4	1.7
11	35.7	N	11:21	-12.5	-2.5	-2.5	-2.0	0.5	3.0	4.0	6.5	10	2.0	8.1	24.7	3.0	2.3
12	22.4	SW	17:00	-18.0	-3.0	-2.5	-2.0	0.5	3.0	4.0	6.5	10	0.3	8.1	3.7	2.3	1.9
13	23.3	ENE	18:26	-17.0	-3.0	-2.5	-2.0	0.5	2.5	4.0	6.5	10	0.0	8.2	0.0	2.4	2.1
14	34.4	NE	22:18	-13.5	-2.5	-2.0	-2.0	0.0	2.5	4.0	6.5	10	0.7	8.2	8.5	2.9	2.4
15	26.7	NE	0:05	-19.5	-2.5	-2.0	-1.5	0.0	2.5	4.0	6.5	10	0.0	8.3	0.0	2.9	2.5
16	27.2	WNW	18:52	-35.0	-2.5	-2.0	-1.5	0.0	2.5	4.0	6.5	10	7.7	8.3	92.8	6.2	1.1
17	18.1	ESE	23:59	-30.5	-3.0	-2.5	-2.0	0.0	2.5	4.0	6.5	10	7.9	8.3	94.7	7.1	1.1
18	43.6	SE	11:27	-18.5	-3.0	-2.5	-2.0	0.0	2.5	4.0	6.5	10	0.0	8.4	0.0	2.1	1.8
19	14.4	WNW	4:21	-20.5	-3.0	-2.5	-2.0	0.0	2.5	4.0	6.5	10	7.1	8.4	84.2	5.5	1.4
20	19.3	NNE	13:57	-17.0	-2.5	-2.5	-2.0	0.0	2.5	4.0	6.0	10	5.5	8.5	64.9	5.6	2.0
21	34.6	SSE	22:49	-14.5	-2.5	-2.5	-2.0	0.0	2.5	4.0	6.0	10	5.4	8.5	63.4	5.3	2.6
22	34.1	SSE	3:39	-5.5	-2.5	-2.0	-2.0	0.0	2.5	3.5	6.0	10	6.3	8.6	73.5	5.1	2.5
23	42.5	NNE	7:04	-7.5	-2.0	-2.0	-1.5	0.0	2.5	3.5	6.0	10	3.0	8.6	34.8	3.9	2.5
24	23.8	WNW	16:35	-6.0	-2.0	-1.5	-1.5	0.0	2.0	3.5	6.0	10	0.0	8.7	0.0	2.2	1.9
25	26.2	WNW	5:09	-9.5	-1.5	-1.5	-1.5	0.0	2.0	3.5	6.0	10	0.1	8.7	1.1	2.7	2.3
26	27.0	SW	18:48	-13.0	-1.5	-1.5	-1.0	0.0	2.0	3.5	6.0	10	1.9	8.8	21.7	4.0	2.9
27	57.0	WNW	5:09	2.0	-1.5	-1.0	-1.0	0.0	2.0	3.5	6.0	11	8.1	8.8	91.7	5.1	1.3
28	30.5	SE	10:02	-5.5	-1.0	-1.0	-1.0	0.0	2.0	3.5	6.0	11	6.8	8.9	76.6	5.1	2.3
29	47.8	W	10:18	0.5	-1.0	-1.0	-1.0	0.0	2.0	3.5	6.0	11	8.0	8.9	89.6	5.7	1.8
30	27.0	W	12:31	-9.0	-1.0	-0.5	-0.5	0.0	2.0	3.5	6.0	11	8.5	9.0	94.5	5.5	0.9
31	20.8	WNW	14:19	-11.0	-1.0	-1.0	-0.5	0.0	2.0	3.5	5.5	11	4.0	9.1	44.2	4.9	2.9
Total													116.7	258.72	45.1	119.0	56.5
Mean				-13.3	-2.4	-2.0	-1.6	0.2	2.6	4.0	6.4	10	1981-2010 Normal for Radiation				
Extreme	57.0	WNW	5:09	1971- 2000 Normal for Soil Temperatures									101.0	259.0	39.0	126.9	68.7
Date	27			-8.4	-8.0	-7.1	-3.5	-0.1	1.7	4.6		No. of Bright Sunshine days = 26					

Note: Red numbers indicate manual calculation

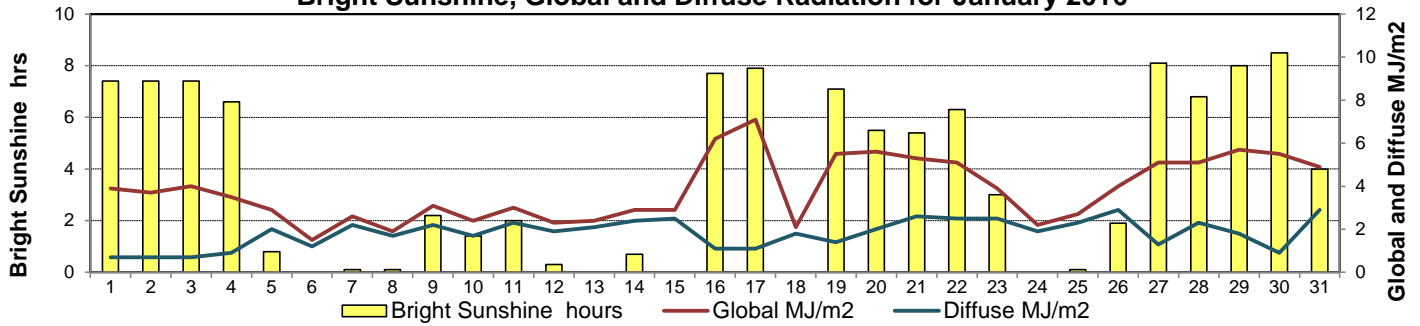
SRC proudly recognizes the following CRS supporters:



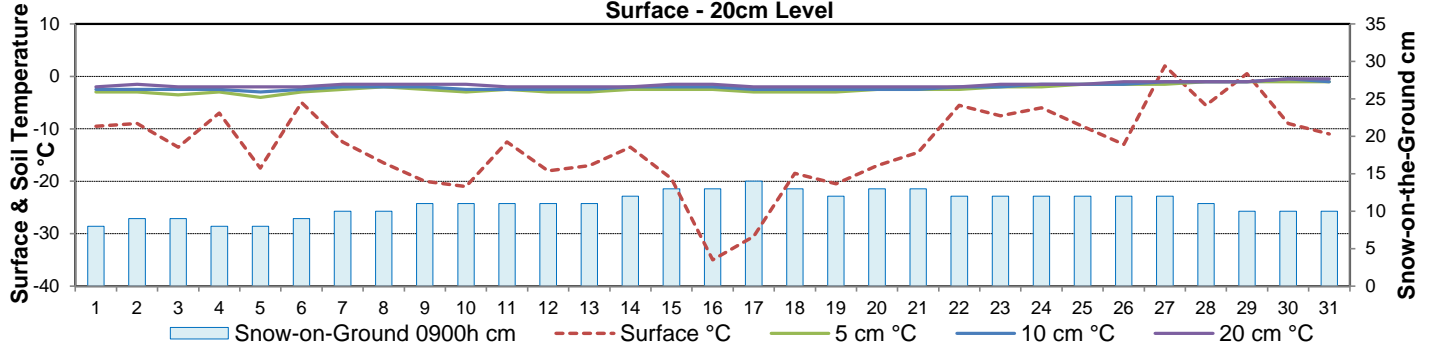
Wind Speed for January 2016



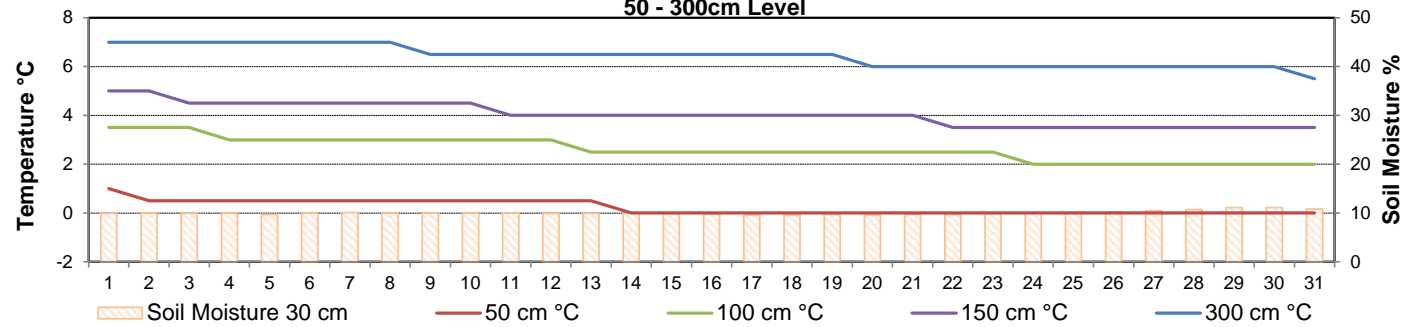
Bright Sunshine, Global and Diffuse Radiation for January 2016



**Soil Temperatures for January 2016
Surface - 20cm Level**



**Soil Temperatures for January 2016
50 - 300cm Level**





SRC CLIMATE REFERENCE STATION DAILY DATA REPORT

SASKATOON STATION 4057180

52°09' N 106°36' W 497 m asl Estab. 1963

Preliminary **JANUARY 2016**

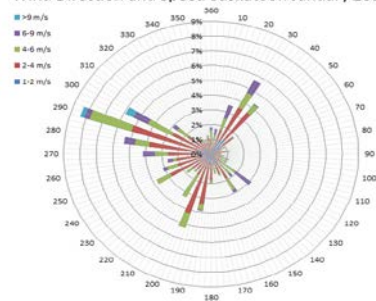
Extreme Records for January

Max/Min Temperature °C				Precipitation - Monthly mm				Wind Monthly km/h				CRS Bright Sunshine - Monthly			
S'toon Area	Date	Site	S'toon CRS Date	S'toon Area	Date	Site	S'toon CRS Date	S'toon Airport	Date	S'toon CRS**	Date	Hours	Year	No. of Days	Year
11.0	23/1980	SWT	8.1 15/2014	66.1	1911	SE	48.6 1969	111	11 ^W 1986	109	1986	146.9	1979	30	1993
-48.9	31/1893	SM	-43.9 *29/1969	0.0	2001, '89''12	SWT SC SE	2.6 2001					45.5	2004	15	1995

**1975 forward * more than one year

Notable Events for CRS Saskatoon - January						Saskatoon Area Stations			Glossary		
Element	Type	Day	New Record	Old Record	Year	SM	NWMP	c. 1892-1901	T	Trace of precipitation	
no records broken						SE	Eby	1901-1941	Normal	30 year average beginning with the decade	
						US	Univ. of Sask.	1915-1964	SOG	Depth of snow-on-the-ground in cm	
						S	Saskatoon	1941-1942	na	not available	
						SA	Saskatoon A	1942 -	Degree-days		
						NRC	Nat. Res. Council	1952-1966	Tm	Mean Temperature	
						SRC	Sask. Res. Council	1963-	Growing	(Tm-5°C); if Tm ≤ 5°C then GDD = 0	
						SWT	S'toon Water Treatment Plant	1974 -	Heating	(18°C-Tm); if Tm ≤ 18°C then HDD = 0	
						SC	S'toon Central Ave	1974-1989	Cooling	(Tm-18°C); if Tm ≥ 18°C then CDD = 0	
						S1	Saskatoon 1	1976-1978	Extreme Cooling	(Tm-24°C); if Tm ≥ 24°C then CDD = 0	
						S2	Saskatoon 2	1977-1990	<p>January 29, discontinuous snow cover in farmland around the Climate Reference Station</p>		
						K	S'toon Kernen Farm	1993-2004			
						KCS	S'toon Kernen Farm CS	1996-			
						RCS	Environment Canada	2008-			
						SF	Sutherland Forestry	1943-1970			

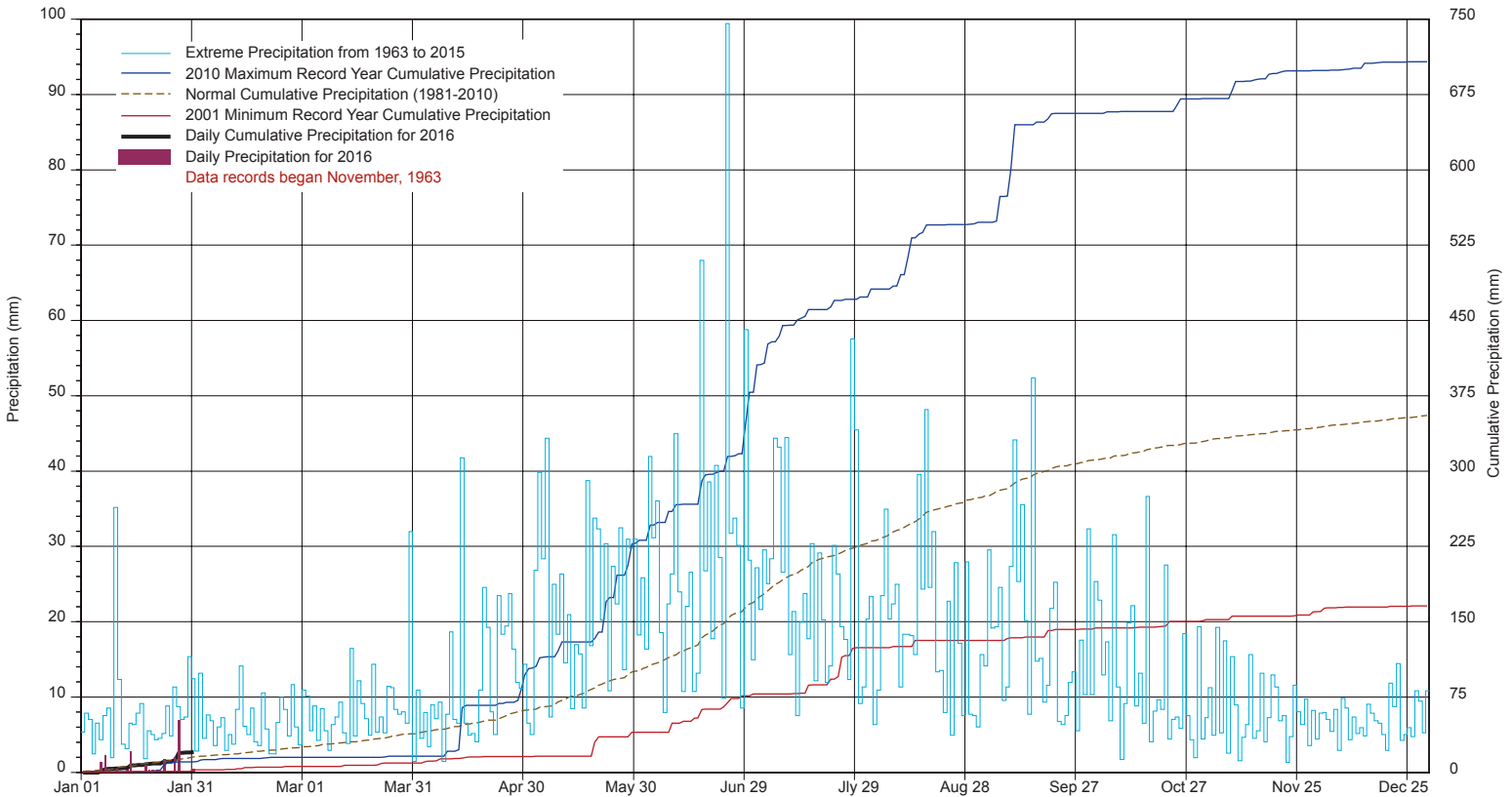
Wind Direction and Speed Saskatoon January 2016



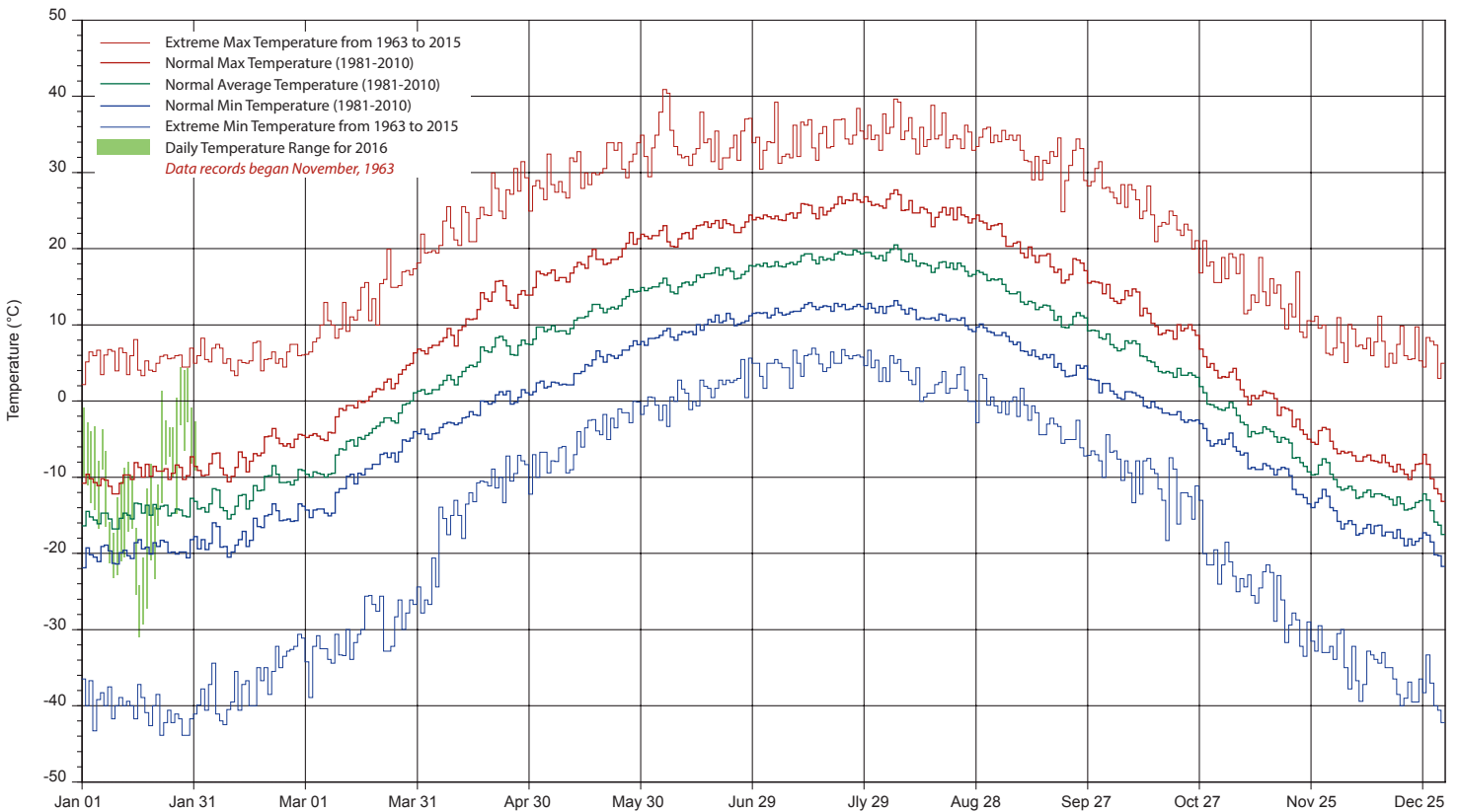
SRC proudly recognizes the following CRS supporters:



SASKATCHEWAN RESEARCH COUNCIL SASKATOON CLIMATE REFERENCE STATION 2016 PRECIPITATION AND NORMALS



2016 TEMPERATURES AND NORMALS



SRC proudly recongnizes the following CRS supporters:

