



SRC CLIMATE REFERENCE STATION DAILY DATA REPORT

SASKATOON STATION 4057180

52°09' N 106°36' W 497 m asl Estab. 1963

Preliminary **OCTOBER 2015**

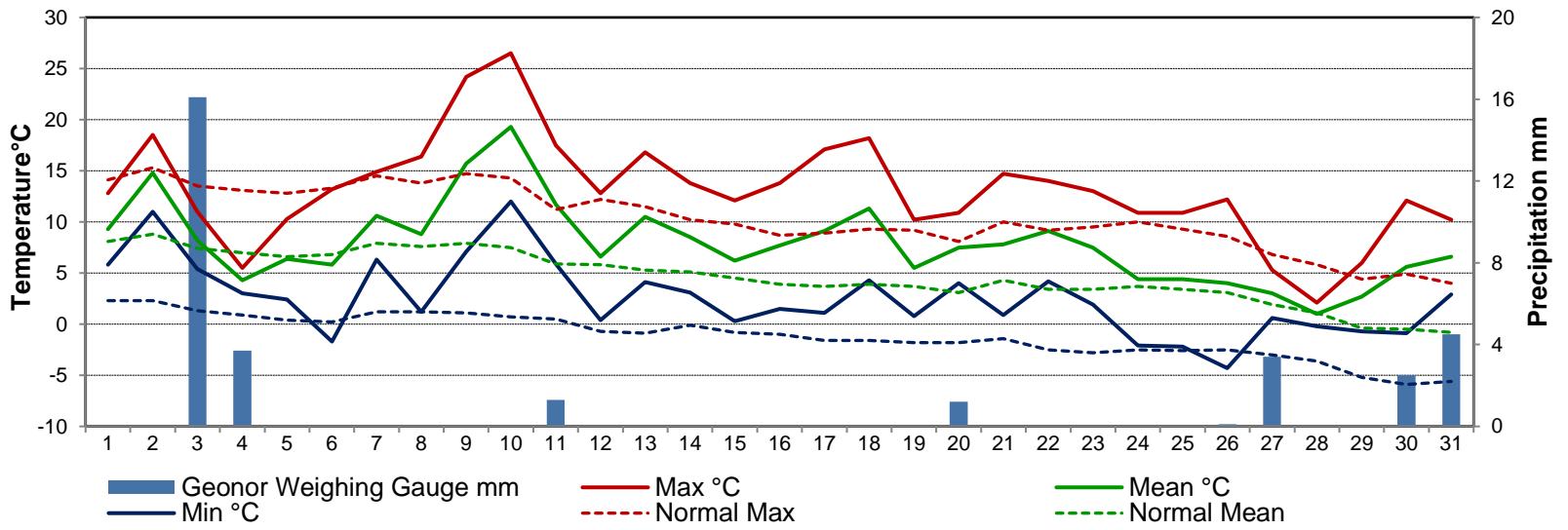
Day	Temperature						Degree-days			Precipitation			Relative Humidity		Station Pressure (sea level)	
	Max	Normal Max	Min	Normal Min	Mean	Normal Mean	Growing	Heating	Cooling	Geonor Weighing Gauge	Tipping bucket	Snow-on-Ground 0900h	Max ½ hr Avg	Min ½ hr Avg	Max ½ hr Avg	Min ½ hr Avg
	°C	1981-2010	°C	1981-2010	°C	1981-2010	5°C base	18°C base	18°C base	mm	mm	cm	%	%	mbar	mbar
1	12.8	14.1	5.8	2.3	9.3	8.1	4.3	8.7	0.0	0.0	0.0	-	97	84	1022	1018
2	18.5	15.3	11.0	2.3	14.8	8.8	9.8	3.2	0.0	0.0	0.0	-	95	48	1021	1016
3	11.0	13.5	5.4	1.3	8.2	7.4	3.2	9.8	0.0	16.1	15.2	-	96	79	1020	1018
4	5.5	13.1	3.0	0.9	4.3	7.0	0.0	13.7	0.0	3.7	3.6	-	97	88	1020	1017
5	10.3	12.8	2.4	0.4	6.4	6.6	1.4	11.6	0.0	0.0	0.0	-	95	50	1019	1015
6	13.2	13.3	-1.7	0.2	5.8	6.8	0.8	12.2	0.0	0.0	0.2	-	97	36	1022	1015
7	14.9	14.5	6.3	1.2	10.6	7.9	5.6	7.4	0.0	0.0	0.0	-	83	55	1015	1010
8	16.4	13.8	1.2	1.2	8.8	7.6	3.8	9.2	0.0	0.0	0.0	-	94	39	1021	1015
9	24.2	14.7	7.1	1.1	15.7	7.9	10.7	2.3	0.0	0.0	0.0	-	74	33	1019	1001
10	26.5	14.3	12.0	0.7	19.3	7.5	14.3	0.0	1.3	0.0	0.0	-	68	29	1000	993
11	17.5	11.2	5.9	0.5	11.7	5.9	6.7	6.3	0.0	1.3	0.0	-	86	50	1009	986
12	12.8	12.2	0.4	-0.7	6.6	5.8	1.6	11.4	0.0	0.0	0.0	-	91	52	1013	1007
13	16.8	11.5	4.1	-0.9	10.5	5.3	5.5	7.5	0.0	0.0	0.0	-	87	29	1013	1009
14	13.8	10.2	3.1	-0.1	8.5	5.1	3.5	9.5	0.0	0.0	0.0	-	71	29	1020	1013
15	12.1	9.8	0.3	-0.8	6.2	4.5	1.2	11.8	0.0	0.0	0.0	-	83	37	1029	1020
16	13.8	8.7	1.5	-1.0	7.7	3.9	2.7	10.3	0.0	0.0	0.0	-	82	30	1028	1025
17	17.1	8.9	1.1	-1.6	9.1	3.7	4.1	8.9	0.0	0.0	0.0	-	80	30	1027	1010
18	18.2	9.3	4.3	-1.6	11.3	3.9	6.3	6.7	0.0	0.0	0.0	-	74	38	1010	1004
19	10.2	9.2	0.8	-1.8	5.5	3.7	0.5	12.5	0.0	0.0	0.0	-	90	68	1012	1010
20	10.9	8.1	4.0	-1.8	7.5	3.1	2.5	10.5	0.0	1.2	light rain	-	92	56	1018	1009
21	14.7	10.0	0.9	-1.4	7.8	4.3	2.8	10.2	0.0	0.0	0.0	-	85	39	1018	1013
22	14.0	9.2	4.2	-2.5	9.1	3.4	4.1	8.9	0.0	0.0	0.0	-	91	53	1014	1010
23	13.0	9.5	1.9	-2.8	7.5	3.4	2.5	10.5	0.0	0.0	0.0	-	86	35	1016	1014
24	10.9	10.0	-2.1	-2.5	4.4	3.7	0.0	13.6	0.0	0.0	0.0	-	89	55	1021	1014
25	10.9	9.3	-2.2	-2.6	4.4	3.4	0.0	13.6	0.0	0.0	fog am	-	97	47	1023	1021
26	12.2	8.6	-4.3	-2.5	4.0	3.1	0.0	14.0	0.0	0.1	0.0	-	97	46	1023	1014
27	5.3	6.8	0.6	-3.0	3.0	1.9	0.0	15.0	0.0	3.4	Snow/ rain	-	94	72	1013	1008
28	2.1	5.8	-0.2	-3.6	1.0	1.1	0.0	17.0	0.0	0.0	0.0	-	84	67	1014	1011
29	6.0	4.4	-0.7	-5.2	2.7	-0.4	0.0	15.3	0.0	0.0	0.0	-	89	58	1013	1001
30	12.1	4.9	-0.9	-5.9	5.6	-0.5	0.6	12.4	0.0	2.5	rain	-	95	49	1002	991
31	10.2	4.0	2.9	-5.6	6.6	-0.8	1.6	11.4	0.0	4.5	rain	-	95	62	1000	991
Total							100.1	315.4	1.3	32.8			Extreme / Date	Extreme / Date	Extreme / Date	Extreme / Date
Avg	13.2	10.4	2.5	-1.2	7.9	4.6	1981-2010 Normal			19.2	Normal					
Extreme Date	26.5		-4.3				62.2	415.1	0.1	321.1	Cumulative		97	29	1029	986
	10		26							329.2	Cumulative No		1	10	15	11

Note: Red numbers indicate manual calculation; Red cell indicate data not available

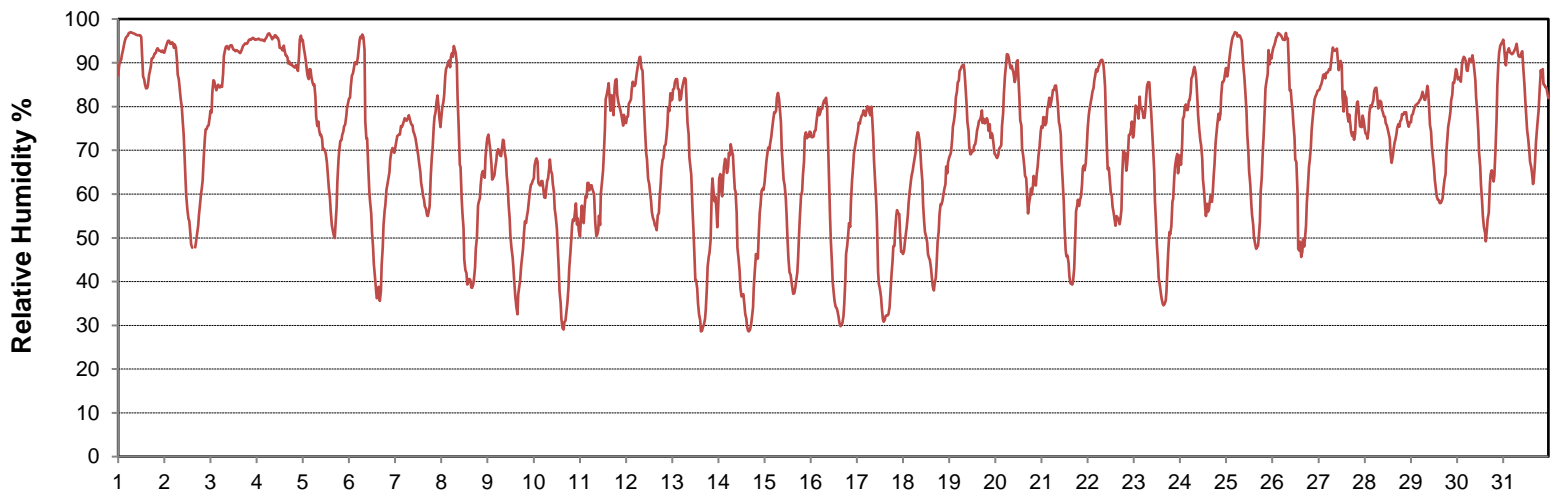
SRC proudly recognizes the following CRS supporters:



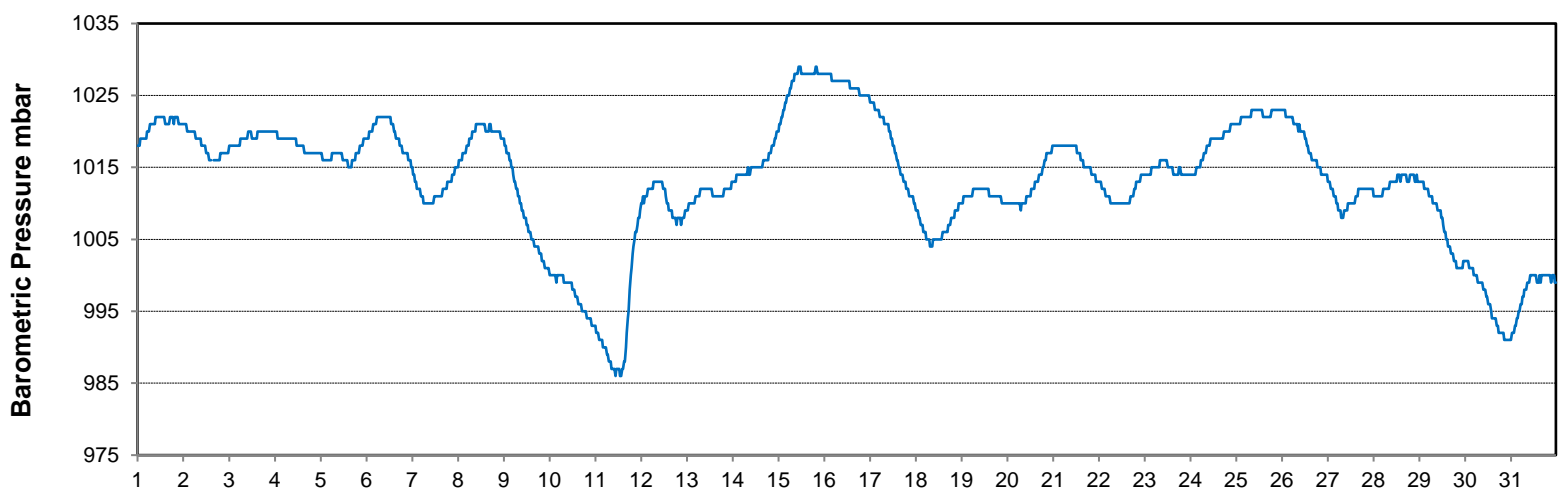
Temperature and Precipitation for October 2015



Relative Humidity for October 2015



Barometric Pressure Corrected to Sea Level for October 2015





SRC CLIMATE REFERENCE STATION DAILY DATA REPORT

SASKATOON STATION 4057180

52°09' N 106°36' W 497 m asl Estab. 1963

Preliminary **OCTOBER 2015**

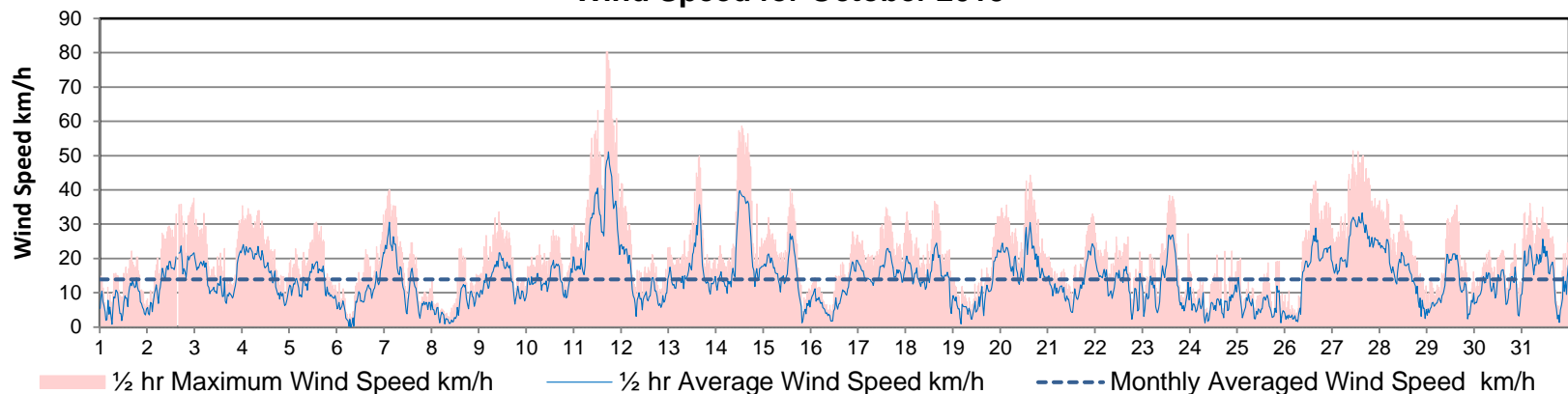
Day	Wind Gust			Soil Temperatures at 0900hrs								Soil Moisture 30 cm 0900hrs %	Radiation				
	Max	Direction	Time	Surface	5 cm	10 cm	20 cm	50 cm	100 cm	150 cm	300 cm		Bright Sunshine	Possible	% Possible	Global	Diffuse
	km/h			°C	°C	°C	°C	°C	°C	°C	°C		hours	hours		MJ/m ²	MJ/m ²
1	22.2	SE	16:15	8.5	10.0	11.0	11.5	12.0	12.0	12.0	11.0	23	0.0	11.6	0.0	3.7	3.0
2	37.6	ESE	23:44	9.0	11.0	11.5	12.0	12.0	12.0	12.0	11.0	23	1.9	11.6	16.5	9.3	4.1
3	33.2	SE	4:46	7.5	11.5	12.0	12.0	12.0	11.5	12.0	11.0	23	0.0	11.5	0.0	1.8	1.5
4	35.4	NNE	0:26	3.5	9.0	10.0	11.0	12.0	11.5	11.5	11.0	26	0.0	11.4	0.0	2.6	2.2
5	30.6	W	13:46	2.5	7.5	8.5	9.5	11.5	11.5	11.5	11.0	26	5.4	11.4	47.6	10.0	3.4
6	32.7	SE	23:36	1.5	5.0	6.5	8.5	11.0	11.5	11.5	11.0	25	9.6	11.3	85.0	12.8	1.2
7	40.0	SE	2:55	7.0	7.5	8.0	9.0	10.5	11.5	11.5	11.0	25	6.4	11.2	57.0	8.9	2.6
8	23.1	WSW	15:23	3.5	6.0	7.0	8.5	10.5	11.0	11.5	11.0	25	10.6	11.2	95.1	12.1	1.1
9	33.6	SW	10:24	11.5	8.0	8.5	9.0	10.0	11.0	11.5	11.0	25	8.7	11.1	78.4	11.1	2.3
10	29.0	SW	23:28	12.5	10.0	10.0	10.5	10.5	11.0	11.5	11.0	25	6.9	11.0	62.6	9.4	3.1
11	80.3	N	16:49	15.5	10.5	11.0	11.0	11.0	11.0	11.0	11.0	25	2.9	11.0	26.5	4.6	2.2
12	41.9	NW	15:40	2.5	7.5	8.5	10.0	11.0	11.0	11.0	11.0	25	9.5	10.9	87.2	11.1	1.2
13	49.9	WNW	0:09	6.0	7.5	8.5	9.5	10.5	11.0	11.0	11.0	25	10.6	10.8	98.0	10.2	2.0
14	58.6	WNW	13:28	5.0	6.0	7.5	8.5	10.5	11.0	11.0	11.0	24	10.4	10.8	96.7	11.1	1.3
15	40.3	WNW	13:33	1.5	5.0	6.5	7.5	10.0	10.5	11.0	11.0	24	10.4	10.7	97.3	10.8	1.7
16	27.8	SE	21:26	3.0	5.0	6.0	7.0	9.5	10.5	11.0	11.0	23	9.4	10.6	88.4	10.4	1.1
17	34.9	SSE	14:04	3.0	5.0	6.0	7.0	9.0	10.5	11.0	11.0	23	10.2	10.6	96.6	10.4	1.0
18	36.7	NW	14:58	5.0	6.0	6.5	7.5	9.0	10.5	11.0	11.0	23	10.0	10.5	95.2	9.3	2.5
19	32.3	SE	22:34	2.5	5.0	6.0	7.5	9.0	10.0	10.5	11.0	23	1.6	10.4	15.3	2.8	2.2
20	44.3	WNW	15:03	8.0	7.5	8.0	8.0	9.0	10.0	10.5	10.5	23	0.9	10.4	8.7	2.4	1.9
21	33.0	SE	22:48	1.5	5.0	6.0	7.0	9.0	10.0	10.5	10.5	23	9.4	10.3	91.3	8.8	1.7
22	27.3	SE	0:04	5.5	5.5	6.5	7.0	8.5	10.0	10.5	10.5	23	9.0	10.2	87.9	8.0	2.3
23	38.4	WNW	13:52	2.5	5.0	6.0	7.0	8.5	10.0	10.5	10.5	23	9.5	10.2	93.4	9.2	1.0
24	22.2	ENE	21:10	-1.0	3.5	4.5	6.0	8.5	9.5	10.5	10.5	22	6.4	10.1	63.3	7.3	1.4
25	20.0	NNW	1:49	-2.0	2.5	4.0	5.5	8.0	9.5	10.0	10.5	22	9.6	10.1	95.5	9.0	1.1
26	42.5	SSE	15:44	-0.5	1.5	3.0	5.0	7.5	9.5	10.0	10.5	22	8.3	10.0	83.2	7.4	2.4
27	51.4	NW	10:32	2.5	4.5	4.5	5.0	7.0	9.5	10.0	10.5	22	0.0	9.9	0.0	1.8	1.5
28	37.3	NW	3:53	0.5	2.5	3.5	4.5	7.0	9.0	10.0	10.5	22	0.0	9.9	0.0	2.2	1.9
29	35.5	SE	15:11	-1.0	2.5	3.5	4.0	6.5	9.0	10.0	10.5	22	7.2	9.8	73.5	6.6	3.3
30	24.3	SW	20:54	0.0	2.5	3.0	4.5	6.5	9.0	9.5	10.5	22	7.5	9.7	77.1	7.4	1.3
31	36.0	NW	4:20	4.0	5.0	5.0	5.0	6.5	8.5	9.5	10.5	24	5.9	9.7	61.0	6.6	1.2
Total													198.2	329.62	60.1	239.1	60.7
Mean				4.2	6.1	7.0	7.9	9.5	10.5	10.9	10.8	24	1981-2010 Normal for Radiation				
Extreme	80.3	N	16:49	1971- 2000 Normal for Soil Temperatures									156.1	329.2	47.4	239.0	97.2
Date	11				4.3	4.7	6.2	8.3	9.2	9.6	9.4		No. of Bright Sunshine days = 26				

Note: Red numbers indicate manual calculation

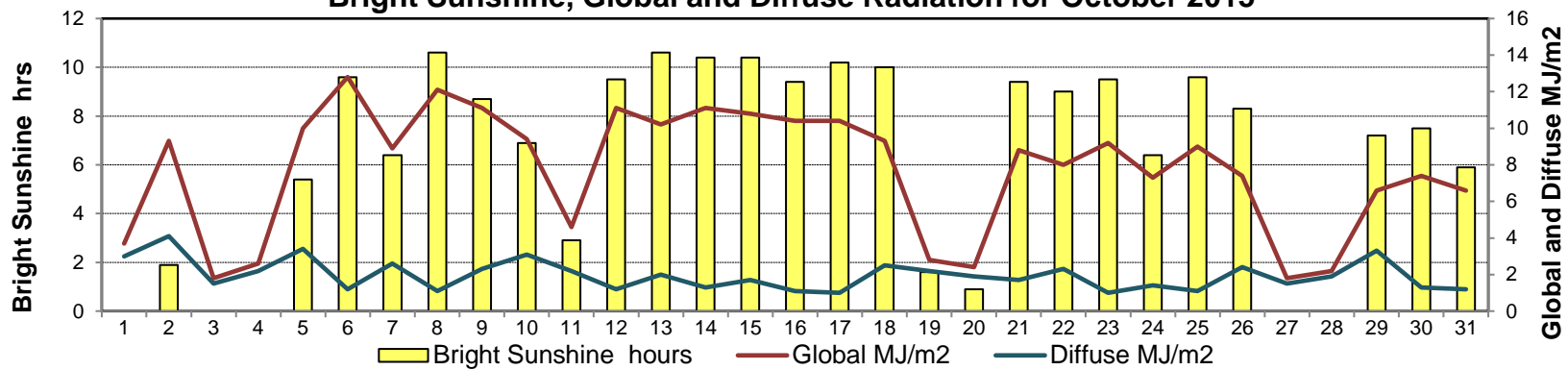
SRC proudly recognizes the following CRS supporters:



Wind Speed for October 2015

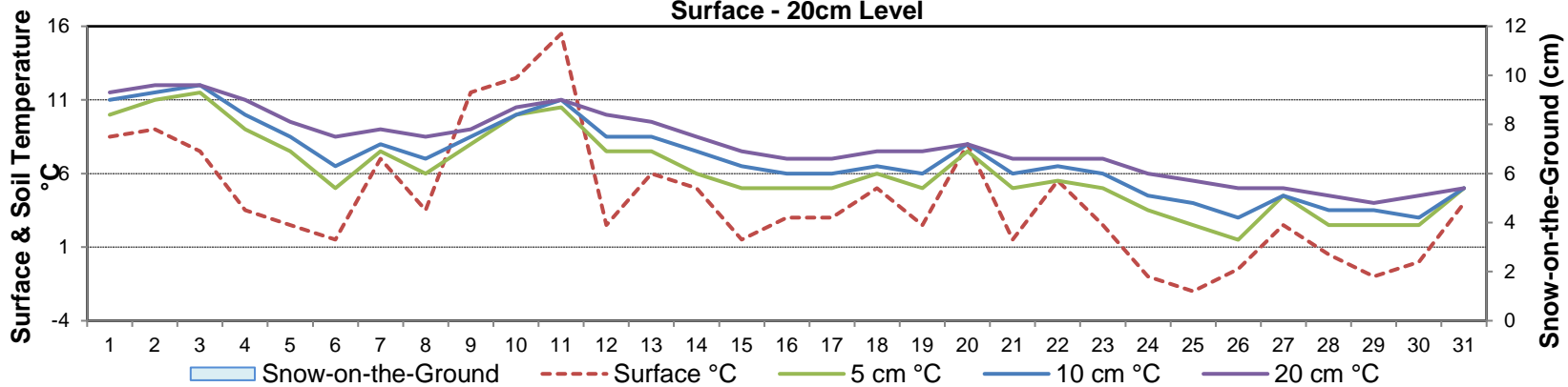


Bright Sunshine, Global and Diffuse Radiation for October 2015



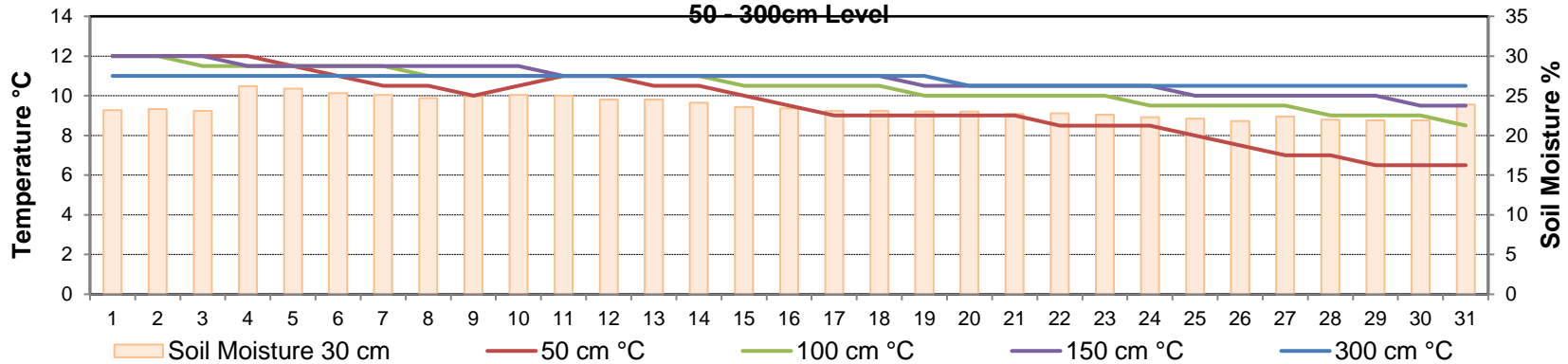
Soil Temperatures for October 2015

Surface - 20cm Level



Soil Temperatures for October 2015

50 - 300cm Level





SRC CLIMATE REFERENCE STATION DAILY DATA REPORT

SASKATOON STATION 4057180

52°09' N 106°36' W 497 m asl Estab. 1963

Preliminary **OCTOBER 2015**

Extreme Records for October

Max/Min Temperature °C			Precipitation - Monthly mm			Wind Monthly km/h			CRS Bright Sunshine - Monthly								
S'toon Area	Date	Site	S'toon CRS	Date	S'toon Area	Date	Site	S'toon CRS	Date	S'toon Airport	Date	S'toon CRS**	Date	Hours	Year	No. of Days	Year
32.2	05/1943	SA US SF	28.5	06.08/1980, 84	72.4	1969	SF	69.8	1969	138 ^{NW}	16/1967	97	1976	231.3	2010	31	1963, 88
-25.6	26/1919	SE US	-21.5	29/1991	0.0	1965*	NRC*	0.0	2000					69.9	2009	20	1969

**1975 forward * more than one year/site

Notable Events for CRS Saskatoon - October							Saskatoon Area Stations			Glossary	
Element	Type	Day	New Record	Old Record	Year						
Temperature	Highest Maximum Daily	10	26.5	24.3	2010	SM	NWMP	c. 1892-1901	T	Trace of precipitation	
	Highest Minimum Daily	2	11.0	9.1	1997	SE	Eby	1901-1941	Normal	30 year average beginning with the decade	
		10	12.0	10.5	1991	US	Univ. of Sask.	1915-1964	SOG	Depth of snow-on-the-ground in cm	
		31	2.9	1.7	1967	S	Saskatoon	1941-1942	na	not available	
	Highest Mean Daily	10	19.3	17.0	1991	SA	Saskatoon A	1942 -	Degree-days		
	Highest Average Minimum Monthly		2.5	2.0	2011	NRC	Nat. Res. Council	1952-1966	Tm	Mean Temperature	
	Highest Average Mean Monthly		7.9	7.6	2010	SRC	Sask. Res. Council	1963-	Growing	(Tm-5°C); if Tm ≤ 5°C then GDD = 0	
	Highest Number of Frost Free Days		24	22	2011	SWT	S'toon Water Treatment Plant	1974 -	Heating	(18°C-Tm); if Tm ≤ 18°C then HDD = 0	
	Lowest number of days ≤ 2°		16	17	2003	SC	S'toon Central Ave	1974-1989	Cooling	(Tm-18°C); if Tm ≥ 18°C then CDD = 0	
	Lowest number of days ≤ -2°		3	4	2014	S1	Saskatoon 1	1976-1978	Extreme Cooling	(Tm-24°C); if Tm ≥ 24°C then CDD = 0	
Lowest Total Heating Degree Days		315.4	322.8	2010	S2	Saskatoon 2	1977-1990				
Precipitation	Greatest Daily	31	4.5	3.8	1973	K	S'toon Kernen Farm	1993-2004			
						KCS	S'toon Kernen Farm CS	1996-			
						RCS	Environment Canada	2008-			
					SF	Sutherland Forestry	1943-1970				

Fog Morning of Oct 1st

Geonor all precipitation unit became Active at 2 Oct 2015 16:30

Bright Sunshine instrument was replaced with re-calibrated instrument (2 Oct 2015)

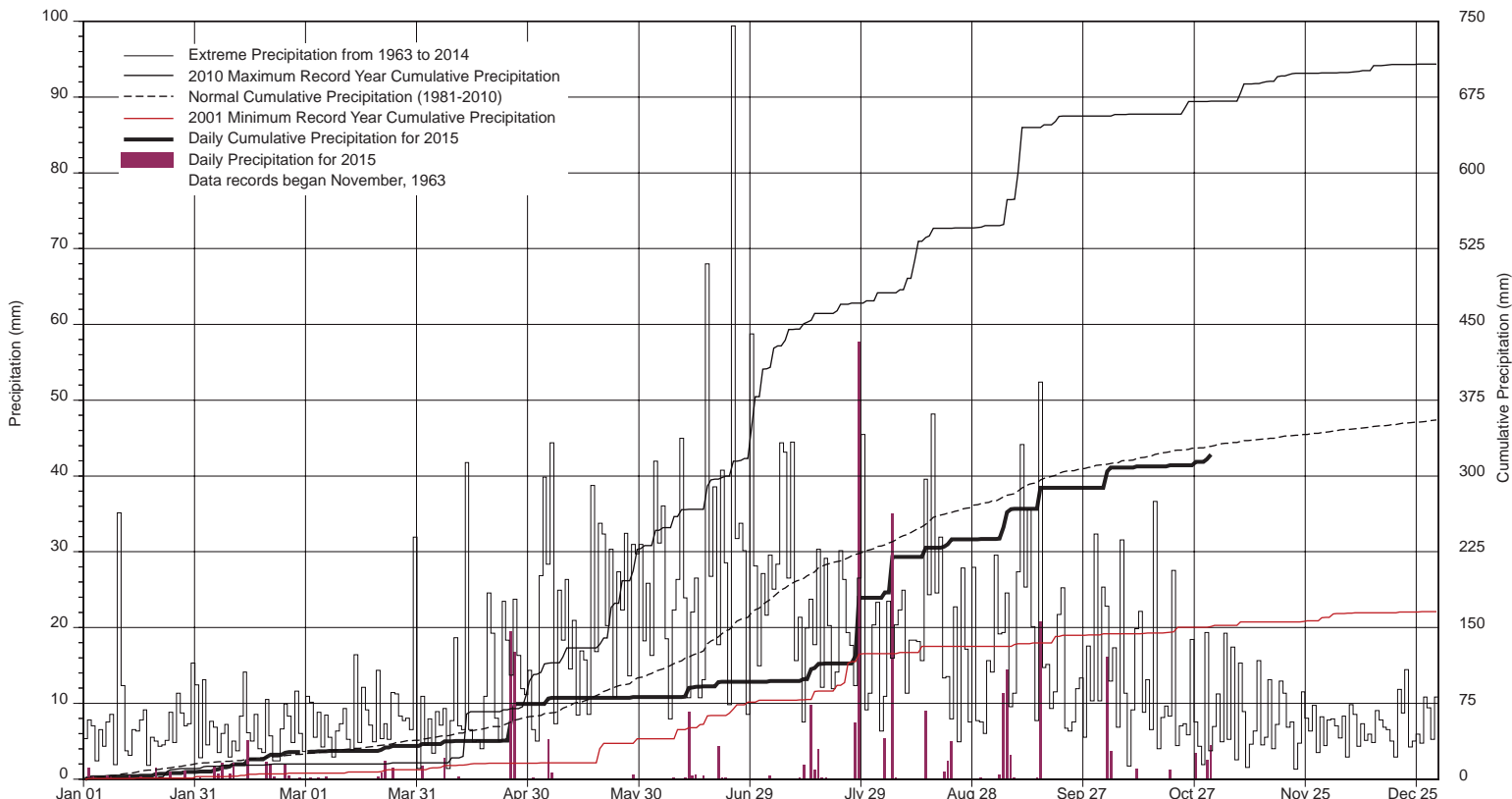
Fall scheduled maintenance occurred on Oct 1 and 2 (desiccant replacement, manual snow stake installation)

Tipping bucket capped 8 Oct 2015

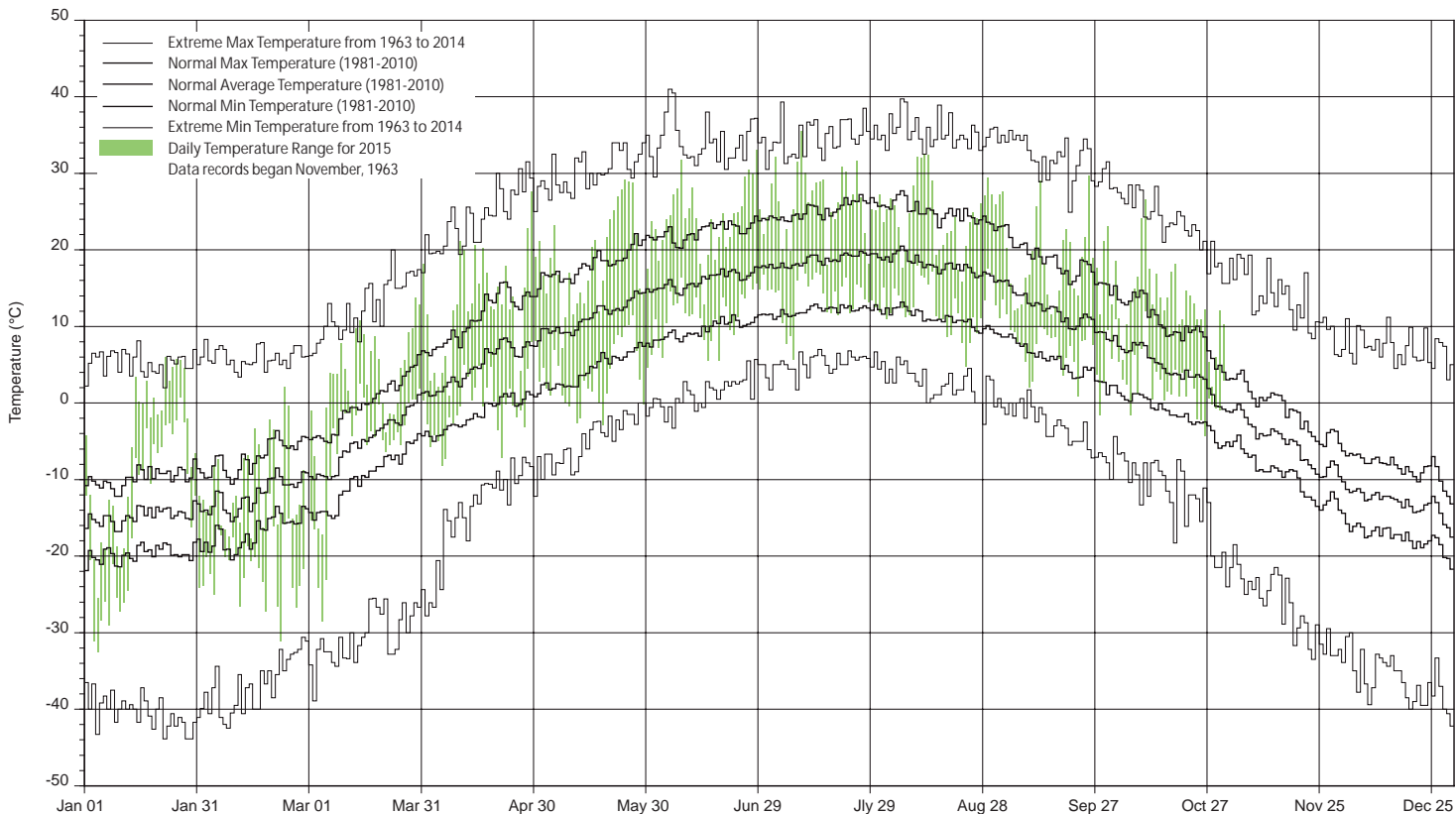
SRC proudly recognizes the following CRS supporters:



SASKATCHEWAN RESEARCH COUNCIL SASKATOON CLIMATE REFERENCE STATION 2015 PRECIPITATION AND NORMALS



2015 TEMPERATURES AND NORMALS



SRC proudly recongnizes the following CRS supporters:

