



SRC CLIMATE REFERENCE STATION DAILY DATA REPORT

CONSERVATION LEARNING CENTRE

Saskatchewan 53.03°N 105.77°W Estab. 2011

Preliminary

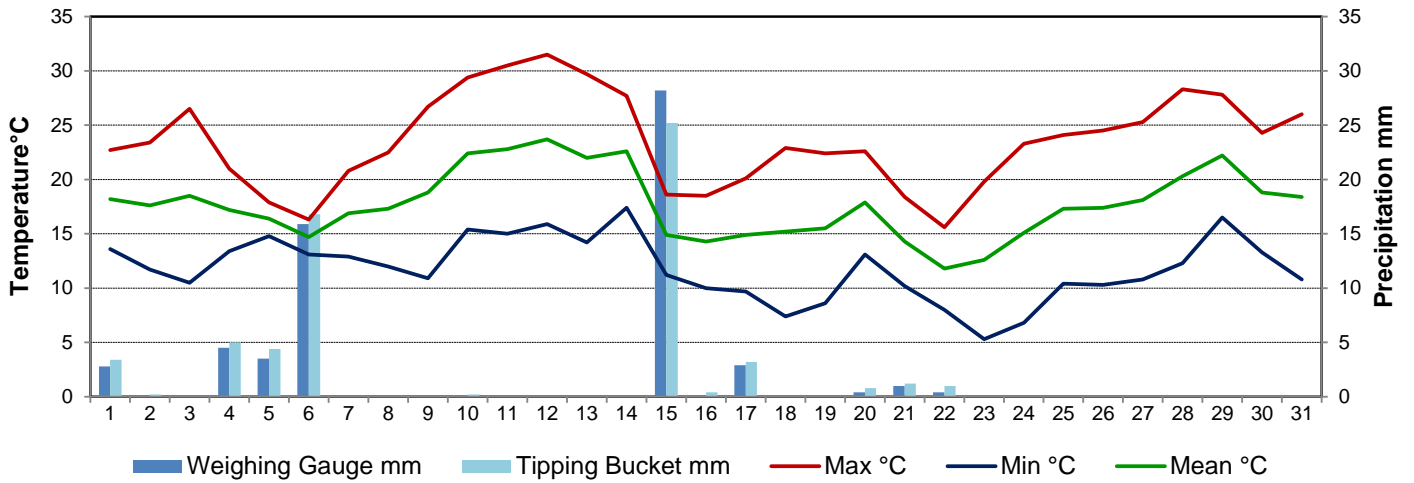
August 2015

Day	Temperature			Degree-days			Precipitation			Relative Humidity		Station Pressure <i>corrected to sea level</i>	
	Max	Min	Mean	Growing	Heating	Cooling	Weighing Gauge	Tipping Bucket	Notes	Max ½ hr Avg	Min ½ hr Avg	Max ½ hr Avg	Min ½ hr Avg
	°C	°C	°C	5°C base	18°C base	18°C base	mm	mm		%	%	mbar	mbar
1	22.7	13.6	18.2	13.2	0.0	0.2	2.8	3.4		94	54	1012	1009
2	23.4	11.7	17.6	12.6	0.4	0.0	0.0	0.2		92	41	1014	1012
3	26.5	10.5	18.5	13.5	0.0	0.5	0.0	0.0		93	34	1015	1013
4	21.0	13.4	17.2	12.2	0.8	0.0	4.5	5.0		93	70	1014	1011
5	17.9	14.8	16.4	11.4	1.6	0.0	3.5	4.4		94	86	1011	1008
6	16.3	13.1	14.7	9.7	3.3	0.0	15.9	16.8		95	89	1010	1005
7	20.8	12.9	16.9	11.9	1.1	0.0	0.0	0.0		94	58	1008	1004
8	22.5	12.0	17.3	12.3	0.7	0.0	0.0	0.0		95	56	1013	1008
9	26.7	10.9	18.8	13.8	0.0	0.8	0.0	0.0		95	47	1015	1013
10	29.4	15.4	22.4	17.4	0.0	4.4	0.0	0.2		93	42	1015	1011
11	30.5	15.0	22.8	17.8	0.0	4.8	0.0	0.0		95	41	1014	1010
12	31.5	15.9	23.7	18.7	0.0	5.7	0.0	0.0		94	46	1012	1010
13	29.7	14.2	22.0	17.0	0.0	4.0	0.0	0.0		94	37	1014	1009
14	27.7	17.4	22.6	17.6	0.0	4.6	0.0	0.0		91	43	1012	1007
15	18.6	11.2	14.9	9.9	3.1	0.0	28.2	25.2		93	63	1014	1005
16	18.5	10.0	14.3	9.3	3.7	0.0	0.0	0.4		93	54	1018	1014
17	20.1	9.7	14.9	9.9	3.1	0.0	2.9	3.2		95	48	1018	1014
18	22.9	7.4	15.2	10.2	2.8	0.0	0.0	0.0		95	34	1015	1014
19	22.4	8.6	15.5	10.5	2.5	0.0	0.1	0.0		95	44	1014	1004
20	22.6	13.1	17.9	12.9	0.1	0.0	0.4	0.8		90	42	1006	1003
21	18.4	10.2	14.3	9.3	3.7	0.0	1.0	1.2		90	57	1008	1004
22	15.6	8.0	11.8	6.8	6.2	0.0	0.4	1.0		90	51	1016	1008
23	19.8	5.3	12.6	7.6	5.4	0.0	0.0	0.0		92	39	1018	1016
24	23.3	6.8	15.1	10.1	2.9	0.0	0.0	0.0		91	32	1018	1016
25	24.1	10.4	17.3	12.3	0.7	0.0	0.0	0.0		93	42	1016	1013
26	24.5	10.3	17.4	12.4	0.6	0.0	0.0	0.0		94	48	1017	1014
27	25.3	10.8	18.1	13.1	0.0	0.1	0.0	0.0		95	48	1015	1008
28	28.3	12.3	20.3	15.3	0.0	2.3	0.0	0.0		95	33	1009	1006
29	27.8	16.5	22.2	17.2	0.0	4.2	0.0	0.0		87	41	1006	1003
30	24.3	13.3	18.8	13.8	0.0	0.8	0.0	0.0		86	41	1003	998
31	26.0	10.8	18.4	13.4	0.0	0.4	0.0	0.0		81	25	1003	998
Total				393.1	42.7	32.8	59.7	61.8					
Avg	23.5	11.8	17.7				370.5	Cumulative ppt					
Extreme	31.5	5.3					28.2	25.2		95	25	1018	998
Date	12	23					15	15		6	31	16	30

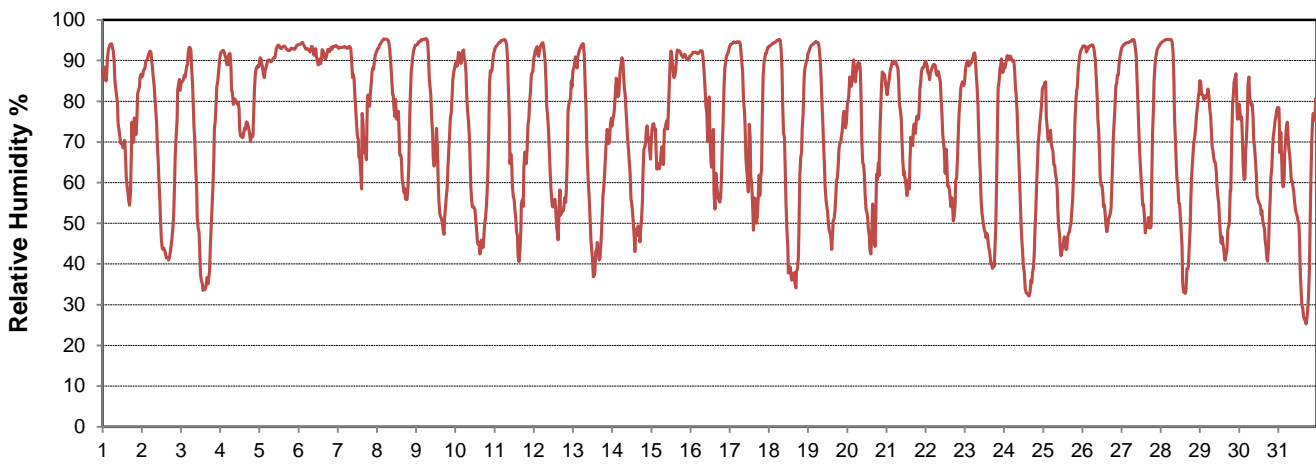
SRC proudly recognizes the following CRS supporters:



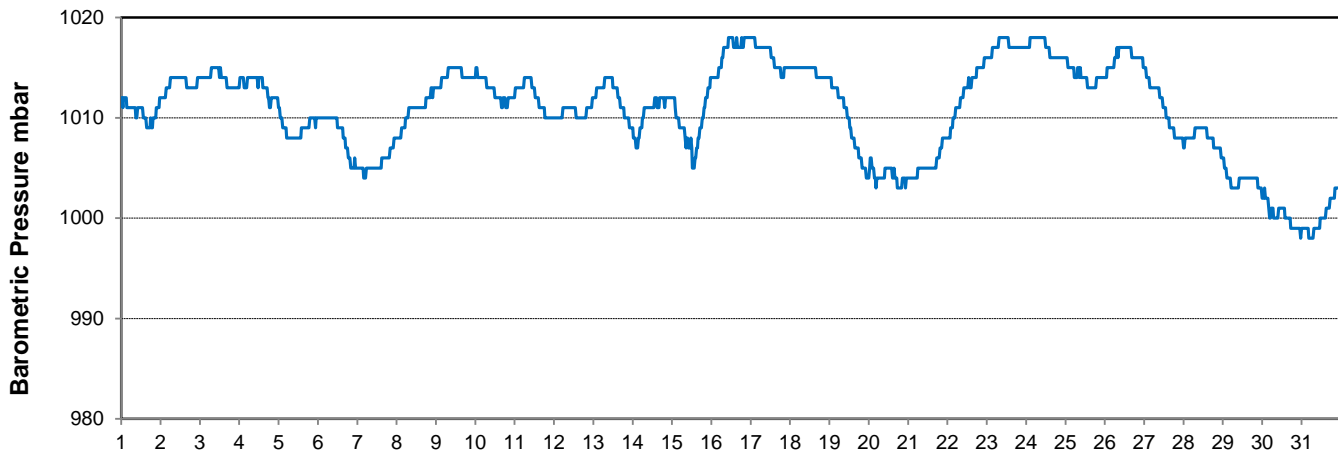
Temperature and Precipitation for August 2015



Relative Humidity for August 2015



Barometric Pressure Corrected to Sea Level for August 2015





SRC CLIMATE REFERENCE STATION DAILY DATA REPORT

CONSERVATION LEARNING CENTRE

Saskatchewan 53.03°N 105.77°W Estab. 2011

Preliminary

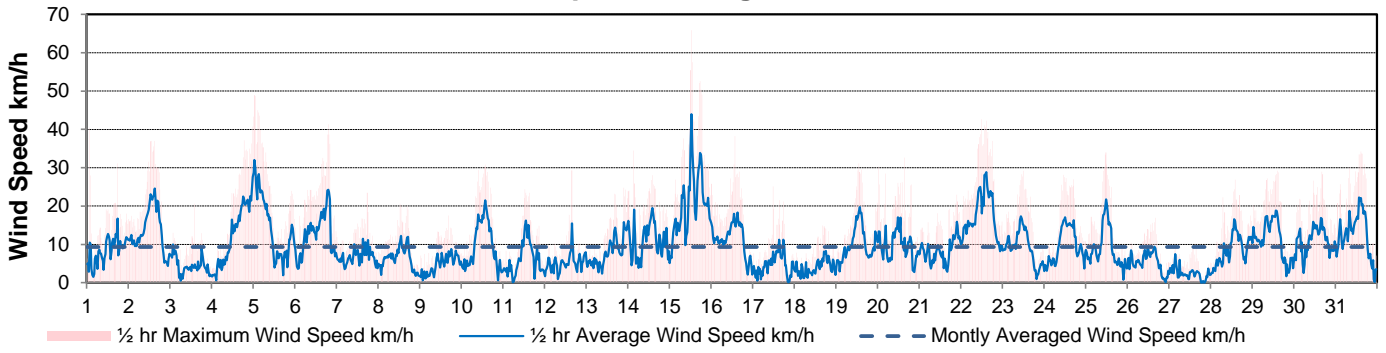
August 2015

Day	Wind Gust			Soil Temperatures at 0900hrs								Soil Moisture	Radiation		
	Max	Direction	Time	Surface	5 cm	10 cm	20 cm	50 cm	100 cm	150 cm	300 cm	0900hrs	Bright Sunshine	Global	Diffuse
	km/h			°C	°C	°C	°C	°C	°C	°C	°C	%	hours	MJ/m ²	MJ/m ²
1	40.5	NNW	1:54	17.0	17.0	16.5	16.5	15.5	13.0	11.0	5.5	42	6.6	15.6	11.9
2	37.0	NNW	13:07	16.5	17.0	16.5	16.5	15.0	13.0	11.0	5.5	41	15.0	26.2	9.7
3	20.6	W	14:16	16.5	16.5	16.5	17.0	15.5	13.5	11.0	6.0	41	14.5	24.6	8.2
4	40.7	E	23:38	18.0	17.5	17.0	17.0	16.0	13.5	11.5	6.0	40	1.9	8.2	7.1
5	48.9	E	0:45	16.0	16.0	14.5	15.0	13.0	11.5	9.5	3.5	41	0.0	2.5	2.2
6	41.3	ESE	19:21	15.5	16.0	14.0	14.5	13.0	11.5	9.5	3.5	41	0.0	3.1	2.7
7	23.4	NNE	17:58	15.0	14.5	11.0	12.5	10.5	10.0	8.5	1.5	43	5.7	14.2	9.6
8	20.6	W	12:57	16.0	16.0	14.5	14.5	13.0	12.0	10.0	4.0	42	6.0	15.1	10.6
9	17.5	SSW	16:37	18.0	16.0	15.0	15.5	14.5	12.5	10.5	5.5	42	10.9	17.7	12.1
10	30.8	SW	13:44	19.0	17.0	16.5	16.5	15.0	13.0	11.0	6.0	42	13.3	21.5	9.8
11	24.3	SSE	12:51	20.5	18.0	17.0	17.5	15.5	13.5	11.5	6.5	41	10.8	18.7	10.1
12	29.3	N	15:33	20.5	18.5	18.0	18.0	16.0	13.5	11.5	6.5	41	13.6	21.3	10.3
13	24.8	S	21:58	18.5	18.5	18.0	18.0	16.0	13.5	11.5	6.5	41	13.2	19.9	9.4
14	34.5	N	3:25	21.0	19.0	18.5	18.5	16.5	13.5	11.5	6.5	41	11.8	17.8	9.8
15	65.9	NE	12:39	15.5	19.0	18.5	18.5	16.5	14.0	12.0	7.0	40	0.0	2.0	1.6
16	38.2	WNW	13:56	13.5	15.5	13.5	14.5	13.5	12.0	10.0	4.0	44	9.0	17.4	11.6
17	25.1	WSW	11:56	13.5	16.0	15.5	16.0	15.5	13.5	11.5	6.0	43	9.9	17.4	9.8
18	15.0	WSW	16:13	15.0	15.5	15.5	16.5	15.5	14.0	11.5	6.5	43	12.7	20.7	11.3
19	31.2	SW	13:20	14.0	15.5	15.5	16.0	15.5	14.0	12.0	6.5	42	7.7	15.3	10.2
20	32.6	NNW	15:59	15.5	16.5	16.0	15.5	15.0	13.5	11.5	6.0	42	9.7	18.3	12.7
21	22.9	NNW	21:44	13.5	16.0	16.0	16.5	15.5	14.0	12.0	7.0	41	5.3	10.7	6.7
22	42.7	NNW	11:46	10.5	15.5	15.0	15.5	14.5	13.0	11.5	6.0	41	6.0	12.5	9.9
23	29.2	NNW	12:12	10.5	14.5	14.5	15.5	15.0	14.0	12.0	7.0	41	13.6	20.7	14.2
24	28.2	S	11:08	12.0	14.0	14.0	15.0	15.0	14.0	12.0	7.0	40	13.6	21.2	16.7
25	33.9	S	11:42	15.5	14.5	15.0	15.5	15.0	14.0	12.0	7.5	40	11.7	16.5	10.8
26	16.9	N	16:24	14.5	15.0	15.0	15.5	15.0	14.0	12.0	7.5	39	11.3	16.3	10.5
27	10.0	SE	15:49	15.0	15.5	15.5	15.5	15.0	13.5	12.0	7.5	39	8.9	13.5	10.4
28	26.9	SW	14:02	16.5	15.5	15.5	15.5	15.0	13.5	12.0	7.5	39	10.3	15.9	12.0
29	29.2	W	14:41	17.5	16.5	16.0	16.0	15.0	13.5	12.0	7.5	39	10.2	15.7	9.9
30	28.9	S	16:19	17.5	16.5	16.5	16.5	15.5	13.5	12.0	7.5	38	3.5	8.5	7.4
31	34.2	WNW	14:34	14.5	15.5	15.5	16.0	15.5	13.5	12.0	7.5	38	12.6	27.2	23.8
Total													279.3	496.2	313.0
Mean				15.9	16.3	15.7	16.0	14.9	13.2	11.3	6.1	40.9			
Extreme	65.9	NE	12:39												
Date	15														

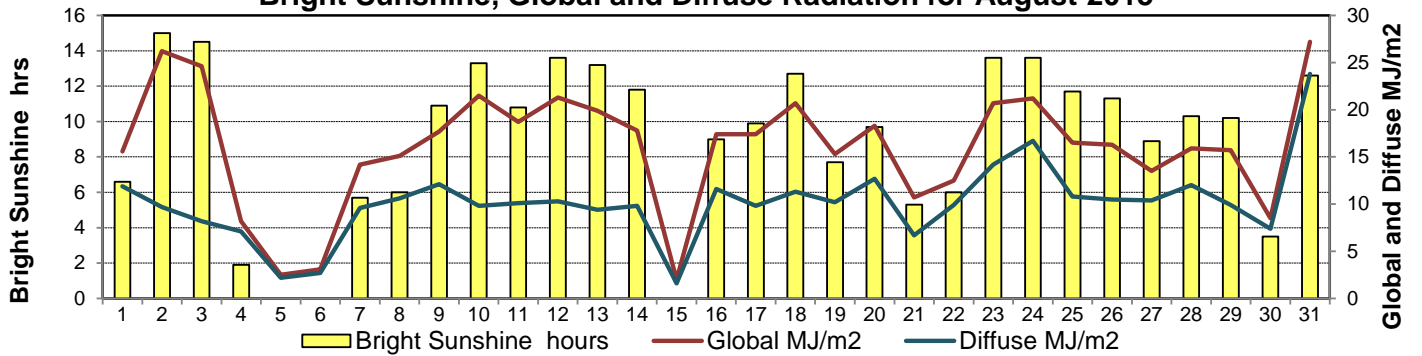
GLOSSARY OF TERMS

Degree-days	Radiation
Tm Mean Temperature	Bright Sunshine is the unobstructed direct radiation from the sun, as opposed to the shading of a location by clouds or by other atmospheric obstructions.
Growing (Tm-5°C); if Tm ≤ 5°C then GDD = 0	
Heating (18°C-Tm); if Tm ≥ 18°C then HDD = 0	Diffuse is radiation reaching the earth's surface after having been scattered from the direct solar beam
Cooling (Tm-18°C); if Tm ≤ 18°C then CDD = 0	Global is the sum of the direct solar and diffuse radiation
T Trace of Precipitation	Relative Humidity The ratio of the air's water vapour content to its water vapour capacity which changes with temperature.
SOG Depth of snow-on-the-ground	
Red Cell no data available	Air Pressure The force exerted by the weight of a column of air above a given point
Red Number manual calculation	Wind Gust The daily highest instantaneous value recorded irrespective of direction and/or duration

Wind Speed for August 2015

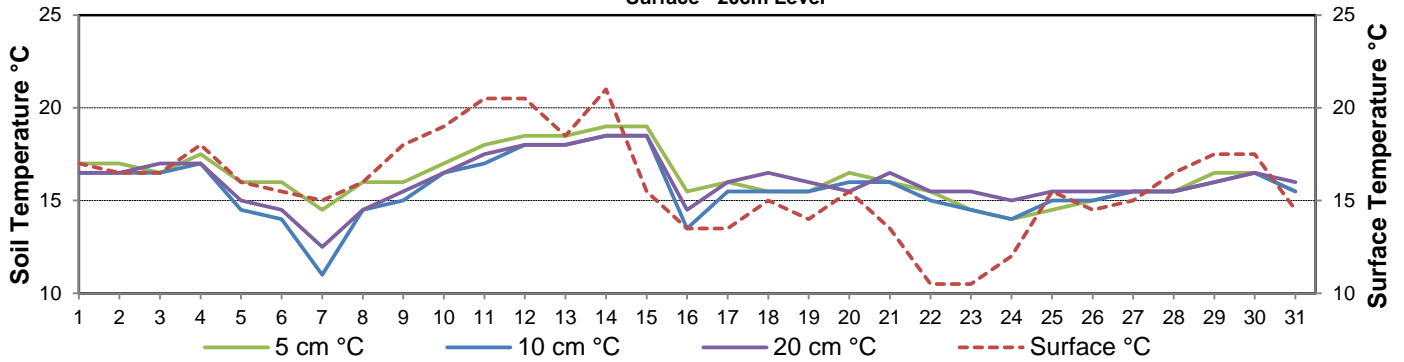


Bright Sunshine, Global and Diffuse Radiation for August 2015



Soil Temperatures for August 2015

Surface - 20cm Level



Soil Temperatures for August 2015

50 - 300cm Level

