



SRC CLIMATE REFERENCE STATION DAILY DATA REPORT

CONSERVATION LEARNING CENTRE

Saskatchewan 53.03°N 105.77°W Estab. 2011

Preliminary

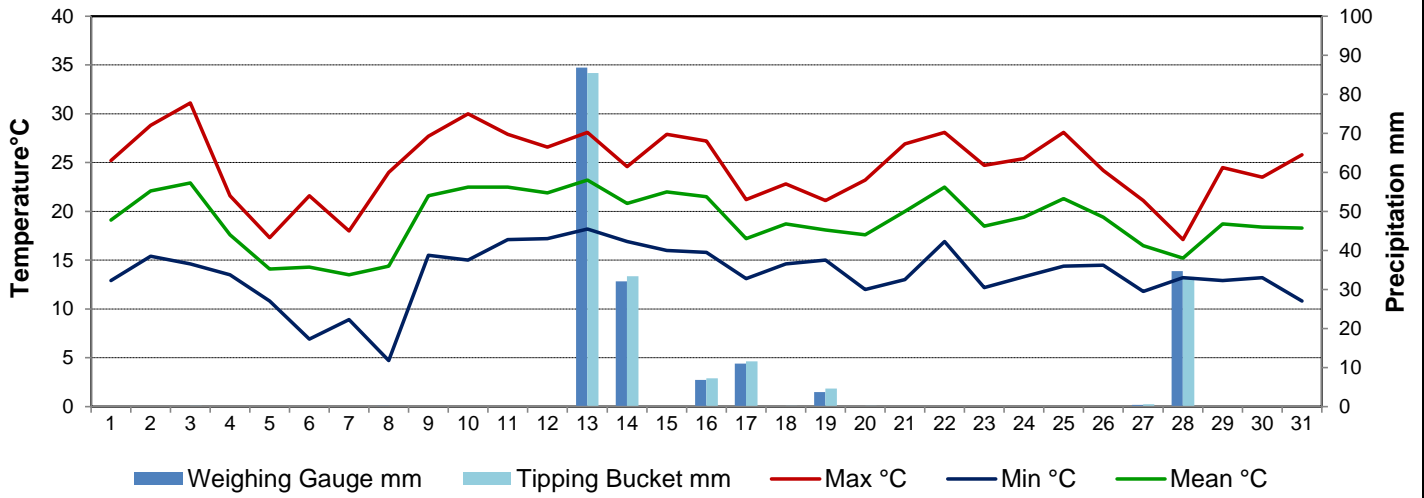
July 2015

Day	Temperature			Degree-days			Precipitation			Relative Humidity		Station Pressure <i>corrected to sea level</i>	
	Max	Min	Mean	Growing	Heating	Cooling	Weighing Gauge	Tipping Bucket	Notes	Max ½ hr Avg	Min ½ hr Avg	Max ½ hr Avg	Min ½ hr Avg
	°C	°C	°C	5°C base	18°C base	18°C base	mm	mm		%	%	mbar	mbar
1	25.2	12.9	19.1	14.1	0.0	1.1	0.1	0.0		96	54	1013	1012
2	28.8	15.4	22.1	17.1	0.0	4.1	0.0	0.0		93	34	1015	1013
3	31.1	14.6	22.9	17.9	0.0	4.9	0.1	0.2		94	33	1012	1005
4	21.6	13.5	17.6	12.6	0.4	0.0	0.0	0.0		89	45	1011	1005
5	17.3	10.8	14.1	9.1	3.9	0.0	0.0	0.0		85	54	1018	1011
6	21.6	6.9	14.3	9.3	3.7	0.0	0.0	0.0		92	40	1021	1016
7	18.0	8.9	13.5	8.5	4.5	0.0	0.0	0.0		89	44	1016	1013
8	24.0	4.7	14.4	9.4	3.6	0.0	0.2	0.0		94	34	1015	1005
9	27.7	15.5	21.6	16.6	0.0	3.6	0.0	0.0		77	36	1004	1002
10	30.0	15.0	22.5	17.5	0.0	4.5	0.0	0.0		84	47	1009	1004
11	27.9	17.1	22.5	17.5	0.0	4.5	0.0	0.0		83	63	1009	1005
12	26.6	17.2	21.9	16.9	0.0	3.9	0.0	0.0		93	58	1005	1003
13	28.1	18.2	23.2	18.2	0.0	5.2	86.8	85.4		95	56	1008	1005
14	24.6	16.9	20.8	15.8	0.0	2.8	32.1	33.4		95	67	1010	1008
15	27.9	16.0	22.0	17.0	0.0	4.0	0.0	0.0		89	44	1010	1006
16	27.2	15.8	21.5	16.5	0.0	3.5	6.8	7.2		93	56	1006	1000
17	21.2	13.1	17.2	12.2	0.8	0.0	11.0	11.6		93	52	1004	1001
18	22.8	14.6	18.7	13.7	0.0	0.7	0.0	0.2		92	53	1006	1002
19	21.1	15.0	18.1	13.1	0.0	0.1	3.7	4.6		91	58	1012	1000
20	23.2	12.0	17.6	12.6	0.4	0.0	0.0	0.2		89	47	1015	1012
21	26.9	13.0	20.0	15.0	0.0	2.0	0.0	0.0		91	52	1012	1004
22	28.1	16.9	22.5	17.5	0.0	4.5	0.0	0.0		84	58	1004	1000
23	24.7	12.2	18.5	13.5	0.0	0.5	0.0	0.0		92	46	1008	1003
24	25.4	13.3	19.4	14.4	0.0	1.4	0.0	0.0		90	40	1010	1008
25	28.1	14.4	21.3	16.3	0.0	3.3	0.0	0.0		88	52	1010	1003
26	24.2	14.5	19.4	14.4	0.0	1.4	0.0	0.0		95	45	1010	1004
27	21.1	11.8	16.5	11.5	1.5	0.0	0.4	0.6		94	64	1012	1008
28	17.1	13.2	15.2	10.2	2.8	0.0	34.7	33.2		93	78	1008	1002
29	24.5	12.9	18.7	13.7	0.0	0.7	0.0	0.0		88	45	1013	1007
30	23.5	13.2	18.4	13.4	0.0	0.4	0.0	0.0		81	37	1017	1013
31	25.8	10.8	18.3	13.3	0.0	0.3	0.0	0.0		84	37	1018	1012
Total				438.8	21.6	57.4	175.9	176.6					
Avg	24.7	13.6	19.2				308.7	Cumulative ppt					
Extreme	31.1	4.7					86.8	85.4		96	33	1021	1000
Date	3	8					13	13		1	3	6	16

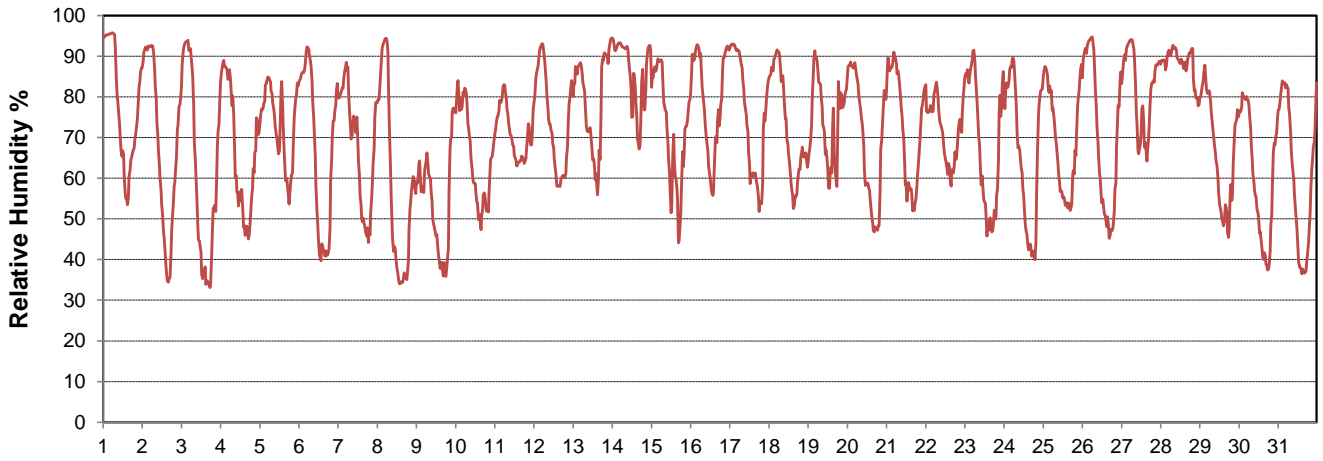
SRC proudly recognizes the following CRS supporters:



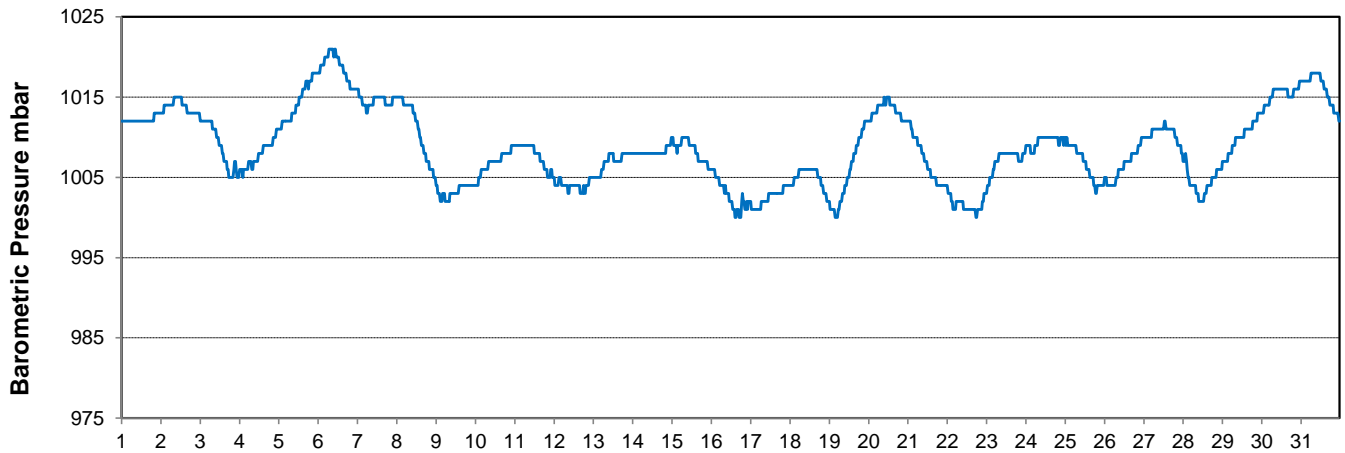
Temperature and Precipitation for July 2015



Relative Humidity for July 2015



Barometric Pressure Corrected to Sea Level for July 2015





SRC CLIMATE REFERENCE STATION DAILY DATA REPORT

CONSERVATION LEARNING CENTRE

Saskatchewan 53.03°N 105.77°W Estab. 2011

Preliminary

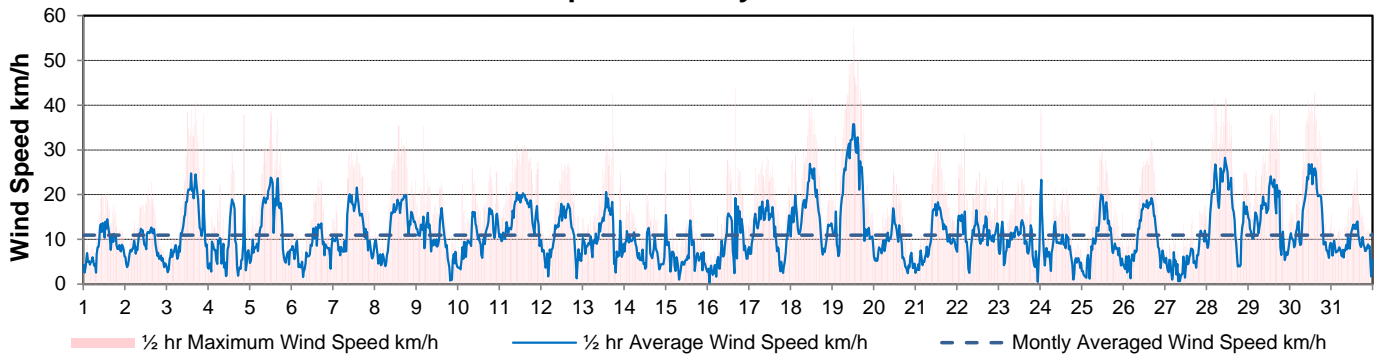
July 2015

Day	Wind Gust			Soil Temperatures at 0900hrs								Soil Moisture	Radiation		
	Max	Direction	Time	Surface	5 cm	10 cm	20 cm	50 cm	100 cm	150 cm	300 cm	0900hrs	Bright Sunshine	Global	Diffuse
	km/h			°C	°C	°C	°C	°C	°C	°C	°C	%	hours	MJ/m ²	MJ/m ²
1	20.7	N	12:54	18.5	15.5	15.5	15.0	13.5	10.5	8.0	4.5	35	5.4	14.0	10.1
2	22.9	NW	15:05	20.0	16.0	16.0	15.5	13.5	10.5	8.0	4.5	35	12.2	22.7	10.5
3	40.8	SW	16:39	22.5	16.5	16.0	15.5	13.5	10.5	8.0	4.5	35	11.7	24.3	8.9
4	37.9	NNE	20:30	18.0	17.0	17.0	16.0	14.0	10.5	8.5	4.5	34	1.8	11.2	8.7
5	38.7	NW	12:06	14.5	15.5	15.5	15.5	13.5	11.0	8.5	4.5	34	7.4	15.8	11.1
6	23.6	WSW	15:58	11.5	14.0	14.0	14.5	13.5	11.0	8.5	5.0	34	12.2	19.8	11.2
7	31.4	NNW	13:37	16.0	14.5	14.5	14.5	13.5	11.0	8.5	5.0	33	8.9	16.7	10.7
8	35.5	SW	13:30	16.5	13.0	13.0	14.0	13.0	11.0	8.5	5.0	33	13.6	27.3	5.9
9	35.3	NW	4:13	20.0	15.5	15.0	14.5	13.0	11.0	9.0	5.0	33	13.2	23.1	10.1
10	26.5	NNE	18:52	21.0	16.0	15.5	15.0	13.5	11.0	9.0	5.0	33	14.0	25.1	9.0
11	31.2	ENE	13:03	21.0	17.5	17.0	16.0	13.5	11.0	9.0	5.0	33	13.5	24.0	10.3
12	27.4	ESE	15:52	22.0	18.0	17.5	16.5	14.0	11.0	9.0	5.0	33	11.2	22.8	10.4
13	42.8	SSE	17:22	23.0	18.5	18.0	17.0	14.5	11.5	9.0	5.0	32	7.2	18.2	7.8
14	25.1	WNW	23:45	18.0	18.0	17.0	16.5	14.0	10.5	8.5	4.0	48	5.7	14.3	9.2
15	29.8	NNW	0:08	20.0	18.0	16.5	16.5	13.0	10.0	8.0	3.5	50	10.8	22.5	7.7
16	43.7	WSW	16:13	21.5	18.5	17.0	17.0	13.5	10.5	8.5	4.0	45	8.1	17.4	5.5
17	28.3	SSW	10:31	15.0	16.0	14.5	14.0	11.5	9.0	7.0	0.5	52	9.2	20.4	11.4
18	41.8	NW	12:01	17.0	17.5	16.0	16.0	13.5	10.5	8.5	3.0	47	7.4	21.0	9.8
19	57.6	NW	12:12	18.0	17.5	16.0	16.0	13.5	10.5	8.5	3.0	45	9.6	23.0	10.7
20	25.7	NW	11:23	17.5	17.0	15.5	16.0	13.5	11.0	8.5	3.5	44	15.1	27.2	9.3
21	31.2	SE	14:30	19.0	16.5	15.5	15.5	12.5	10.0	8.0	3.0	43	12.0	23.5	11.5
22	33.8	SSE	4:35	21.0	18.5	17.0	17.0	14.5	11.5	9.5	4.0	43	10.6	22.0	11.3
23	23.6	W	13:46	18.0	18.5	17.5	17.5	15.0	12.0	9.5	4.5	42	13.6	22.7	12.1
24	39.1	NW	0:20	18.0	18.5	17.5	17.5	15.5	12.5	10.0	5.0	42	14.5	26.7	9.2
25	31.5	S	12:14	20.5	18.5	17.5	17.5	15.5	12.5	10.0	5.0	41	13.0	23.1	10.4
26	32.1	W	16:16	18.5	18.5	18.0	18.0	15.5	12.5	10.0	5.0	41	13.3	23.9	9.8
27	17.6	NNE	23:09	17.5	18.0	17.5	17.5	16.0	13.0	10.5	5.5	40	1.6	9.0	7.5
28	41.9	NNE	11:56	13.5	16.0	15.5	15.5	13.5	12.0	9.5	3.0	43	0.0	3.2	2.8
29	39.2	NNW	18:12	18.0	15.5	12.5	14.5	12.5	10.5	8.5	2.5	44	13.5	23.8	10.4
30	42.9	WNW	14:31	17.5	17.0	16.5	16.5	15.0	13.0	10.5	5.5	43	14.4	24.5	9.2
31	25.8	NW	15:26	17.5	16.5	16.5	16.5	15.5	13.5	11.0	6.0	42	15.0	50.2	18.9
Total													319.7	663.4	301.4
Mean				18.4	16.8	16.1	16.0	13.9	11.2	8.9	4.3	39.7			
Extreme	57.6	NW	12:12												
Date	19														

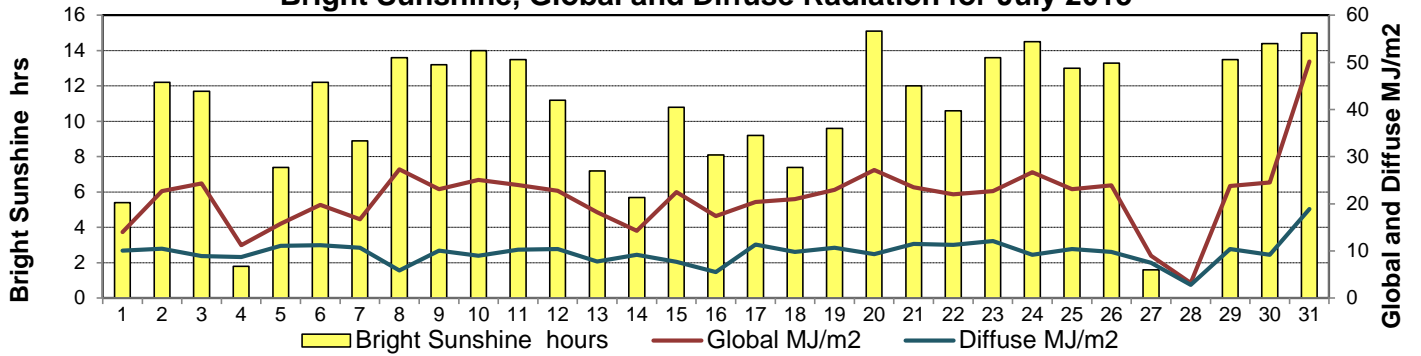
GLOSSARY OF TERMS

Degree-days	Radiation
T _m Mean Temperature	Bright Sunshine is the unobstructed direct radiation from the sun, as opposed to the shading of a location by clouds or by other atmospheric obstructions.
Growing (T _m -5°C); if T _m ≤ 5°C then GDD = 0	
Heating (18°C-T _m); if T _m ≥ 18°C then HDD = 0	
Cooling (T _m -18°C); if T _m ≤ 18°C then CDD = 0	Diffuse is radiation reaching the earth's surface after having been scattered from the direct solar beam
T Trace of Precipitation	Global is the sum of the direct solar and diffuse radiation
SOG Depth of snow-on-the-ground	
Red Cell no data available	Relative Humidity The ratio of the air's water vapour content to its water vapour capacity which changes with temperature.
Red Number manual calculation	Air Pressure The force exerted by the weight of a column of air above a given point
	Wind Gust The daily highest instantaneous value recorded irrespective of direction and/or duration

Wind Speed for July 2015

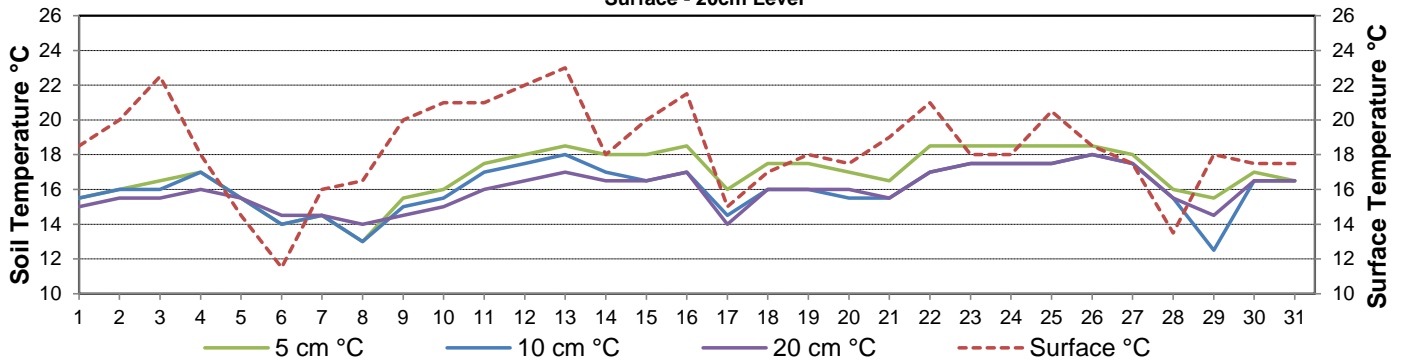


Bright Sunshine, Global and Diffuse Radiation for July 2015



Soil Temperatures for July 2015

Surface - 20cm Level



Soil Temperatures for July 2015

50 - 300cm Level

