



# SRC CLIMATE REFERENCE STATION DAILY DATA REPORT

## SASKATOON STATION 4057180

52°09' N 106°36' W 497 m asl Estab. 1963

Preliminary **JANUARY 2015**

Day	Temperature						Degree-days			Precipitation			Relative Humidity		Station Pressure (sea level)	
	Max	Normal Max	Min	Normal Min	Mean	Normal Mean	Growing	Heating	Cooling	Weighing Gauge	Notes	Snow-on-Ground 0900h	Max ½ hr Avg	Min ½ hr Avg	Max ½ hr Avg	Min ½ hr Avg
	°C	1981-2010	°C	1981-2010	°C	1981-2010	5°C base	18°C base	18°C base	mm		cm	%	%	mbar	mbar
1	-4.3	-10.8	-12.1	-21.9	-8.2	-16.4	0.0	26.2	0.0	0.0		6	90	78	1016	1009
2	-12.0	-9.6	-20.5	-19.3	-16.3	-14.5	0.0	34.3	0.0	1.5	Snow	6	89	72	1023	1013
3	-20.4	-10.2	-31.1	-20.2	-25.8	-15.2	0.0	43.8	0.0	0.3		8	80	71	1033	1024
4	-25.5	-10.7	-32.5	-20.5	-29.0	-15.6	0.0	47.0	0.0	0.0		8	75	71	1033	1025
5	-18.2	-11.1	-28.4	-21.1	-23.3	-16.1	0.0	41.3	0.0	0.0		8	79	60	1027	1019
6	-19.0	-10.2	-25.9	-19.1	-22.5	-14.7	0.0	40.5	0.0	0.0		8	79	66	1046	1027
7	-12.7	-10.4	-29.1	-18.9	-20.9	-14.7	0.0	38.9	0.0	0.5	Snow	8	88	73	1046	1014
8	-13.5	-11.2	-21.1	-19.7	-17.3	-15.5	0.0	35.3	0.0	0.3	Snow	9	84	63	1032	1015
9	-18.8	-12.2	-25.4	-21.3	-22.1	-16.8	0.0	40.1	0.0	0.0		7	81	64	1031	1014
10	-21.5	-12.2	-27.3	-21.4	-24.4	-16.8	0.0	42.4	0.0	0.0		7	82	71	1020	1013
11	-19.1	-10.8	-26.1	-19.9	-22.6	-15.4	0.0	40.6	0.0	0.0		7	85	71	1031	1020
12	-12.3	-9.7	-24.5	-19.6	-18.4	-14.7	0.0	36.4	0.0	0.0		7	88	71	1031	1019
13	-5.8	-9.7	-17.7	-20.3	-11.8	-15.0	0.0	29.8	0.0	0.5	Manual SOG 8 Snow	8	93	77	1019	1015
14	3.4	-10.3	-7.2	-20.7	-1.9	-15.5	0.0	19.9	0.0	0.0		8	94	70	1015	1008
15	0.2	-8.1	-9.4	-18.6	-4.6	-13.4	0.0	22.6	0.0	0.0		8	91	73	1015	1010
16	-0.1	-8.7	-8.8	-18.2	-4.5	-13.5	0.0	22.5	0.0	0.3	snow	7	97	83	1010	993
17	2.8	-10.0	-3.3	-19.4	-0.3	-14.7	0.0	18.3	0.0	0.0		7	96	61	1005	993
18	-1.9	-8.3	-10.5	-19.2	-6.2	-13.7	0.0	24.2	0.0	0.0		7	94	64	1006	1001
19	0.7	-9.9	-5.3	-20.1	-2.3	-15.0	0.0	20.3	0.0	0.0		7	98	83	1011	1003
20	-1.6	-8.6	-6.6	-18.6	-4.1	-13.6	0.0	22.1	0.0	1.5	Snow	8	96	89	1021	1011
21	-1.0	-9.2	-5.7	-19.1	-3.4	-14.2	0.0	21.4	0.0	0.2		9	97	72	1022	1007
22	5.9	-9.2	-2.9	-18.3	1.5	-13.8	0.0	16.5	0.0	0.0	Manual SOG 8	7	83	65	1011	1004
23	2.9	-8.9	-2.6	-18.5	0.2	-13.7	0.0	17.8	0.0	0.0		6	85	72	1013	1006
24	4.6	-10.3	-4.1	-19.9	0.3	-15.1	0.0	17.7	0.0	1.0	freezing rain	6	95	74	1013	1002
25	5.7	-9.5	-2.3	-19.8	1.7	-14.7	0.0	16.3	0.0	0.0		4	97	67	1013	1002
26	5.6	-8.4	0.8	-20.1	3.2	-14.2	0.0	14.8	0.0	0.0	intermittent snow pack	3	86	62	1011	1008
27	4.5	-8.7	-2.5	-19.8	1.0	-14.3	0.0	17.0	0.0	0.0	Manual SOG 0	0	96	73	1010	1008
28	-2.0	-10.3	-9.2	-19.8	-5.6	-15.1	0.0	23.6	0.0	1.1		0	95	79	1028	1010
29	-8.4	-9.8	-16.2	-20.6	-12.3	-15.2	0.0	30.3	0.0	0.0		0	89	79	1031	1021
30	-6.6	-7.3	-12.1	-18.2	-9.4	-12.8	0.0	27.4	0.0	0.0		0	93	62	1028	1020
31	-12.1	-8.6	-24.1	-17.8	-18.1	-13.2	0.0	36.1	0.0	0.0		0	80	66	1035	1028
Total							0.0	885.4	0.0	7.2			Extreme / Date	Extreme / Date	Extreme / Date	Extreme / Date
Avg	-6.5	-9.8	-14.6	-19.7	-10.6	-14.7	1981-2010 Normal			15.5	Normal					
Extreme	5.9		-32.5				0.0	1015.1	0.0	7.2	Cumulative		98	60	1046	993
Date	22		4							15.5	Cumulative Normal		19	5	6	16

Note: Red numbers indicate manual calculation; Red cell indicate data not available

### SRC proudly recognizes the following CRS supporters:

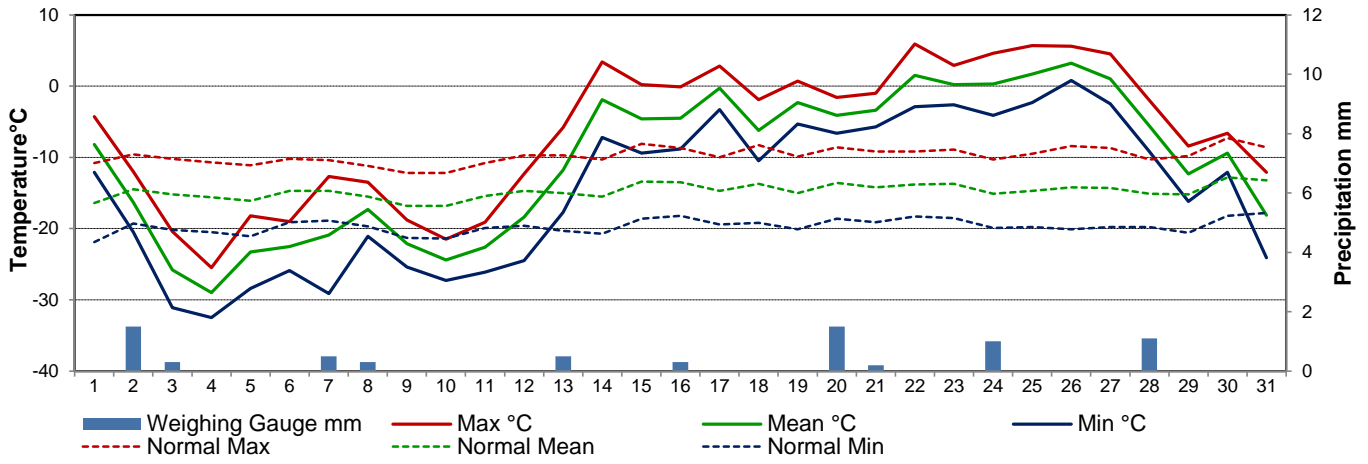


Agriculture and Agri-Food Canada

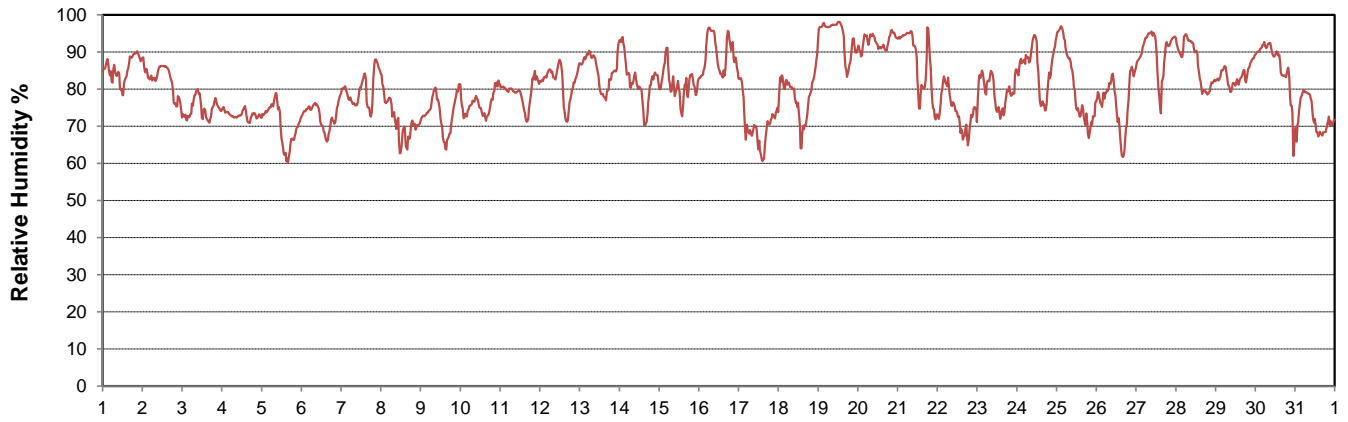
Agriculture et Agroalimentaire Canada



### Temperature and Precipitation for January 2015



### Relative Humidity for January 2015



### Barometric Pressure Corrected to Sea Level for January 2015





# SRC CLIMATE REFERENCE STATION DAILY DATA REPORT

## SASKATOON STATION 4057180

52°09' N 106°36' W 497 m asl Estab. 1963

Preliminary **JANUARY 2015**

Day	Wind Gust			Soil Temperatures at 0900hrs								Soil Moisture 30 cm	Radiation				
	Max	Direction	Time	Surface	5 cm	10 cm	20 cm	50 cm	100 cm	150 cm	300 cm		0900hrs	Bright Sunshine	Possible	% Possible	Global
	km/h			°C	°C	°C	°C	°C	°C	°C	°C	%	hours	hours		MJ/m <sup>2</sup>	MJ/m <sup>2</sup>
1	30.6	N	22:54	-10.5	-2.5	-2.0	-1.5	1.0	3.5	5.0	6.5	9.5	0.0	7.8	0.0	2.2	1.8
2	41.0	NNE	15:31	-16.5	-2.5	-2.0	-1.5	1.0	3.5	4.5	6.5	9.6	0.0	7.9	0.0	1.5	1.3
3	33.6	N	0:00	-24.5	-2.5	-2.5	-1.5	1.0	3.5	4.5	6.5	9.3	6.9	7.9	87.7	4.8	1.0
4	34.1	WSW	16:28	-32.5	-3.0	-2.5	-1.5	1.0	3.5	4.5	6.5	9.0	7.2	7.9	91.1	5.9	1.3
5	39.7	WNW	22:58	-28.5	-3.0	-2.5	-2.0	0.5	3.0	4.5	6.5	8.9	7.2	7.9	90.9	6.1	1.0
6	34.8	NW	15:22	-20.0	-3.5	-3.0	-2.0	0.5	3.0	4.5	6.5	8.8	7.0	8.0	88.1	4.6	1.0
7	38.6	NNW	23:40	-29.5	-3.5	-3.0	-2.0	0.5	3.0	4.5	6.5	8.8	0.8	8.0	10.0	2.8	2.1
8	54.5	NW	12:25	-18.0	-3.5	-3.0	-2.5	0.5	3.0	4.5	6.5	8.8	7.6	8.0	94.9	4.6	0.9
9	29.7	NW	0:41	-25.5	-5.0	-4.0	-2.5	0.5	3.0	4.5	6.5	8.7	7.6	8.0	94.5	5.4	0.9
10	15.9	NNE	11:24	-28.0	-6.0	-5.0	-3.5	0.0	3.0	4.0	6.5	8.6	3.3	8.1	40.8	4.0	2.5
11	25.9	WNW	12:22	-25.5	-7.0	-6.0	-4.5	0.0	3.0	4.0	6.5	8.4	7.7	8.1	94.9	6.5	1.1
12	27.9	S	13:43	-22.0	-7.5	-6.5	-5.0	0.0	2.5	4.0	6.5	8.4	7.7	8.2	94.5	6.1	1.1
13	23.8	NW	12:09	-14.0	-6.5	-6.0	-5.0	-0.5	2.5	4.0	6.0	8.5	7.3	8.2	89.2	5.6	1.2
14	38.6	NW	16:08	-2.0	-5.0	-4.5	-4.0	-0.5	2.5	4.0	6.0	8.8	4.0	8.2	48.7	3.7	2.1
15	34.6	E	20:25	-4.0	-3.5	-3.5	-3.0	-0.5	2.5	4.0	6.0	9.2	0.0	8.3	0.0	2.3	1.9
16	41.4	NW	23:39	-5.5	-3.5	-3.0	-2.5	-0.5	2.5	4.0	6.0	9.3	0.6	8.3	7.2	2.9	2.3
17	43.4	NW	0:17	-3.5	-3.0	-2.5	-2.5	-0.5	2.5	3.5	6.0	9.4	6.2	8.4	74.3	4.8	0.9
18	28.6	SE	16:50	-11.5	-3.0	-2.5	-2.0	-0.5	2.0	3.5	6.0	9.6	3.8	8.4	45.3	4.0	1.7
19	21.0	WSW	16:12	-4.0	-3.0	-2.5	-2.0	-0.5	2.0	3.5	6.0	9.6	1.0	8.4	11.8	2.7	2.2
20	26.1	NE	10:09	-4.5	-2.5	-2.0	-2.0	-0.5	2.0	3.5	6.0	9.8	0.2	8.5	2.4	3.2	2.5
21	36.5	SSW	21:36	-5.0	-2.5	-2.0	-2.0	-0.5	2.0	3.5	6.0	9.8	3.3	8.5	38.7	4.3	2.2
22	39.2	WSW	12:37	1.0	-2.0	-2.0	-1.5	0.0	2.0	3.5	6.0	10.0	2.8	8.6	32.6	3.9	2.4
23	25.8	WSW	18:09	-3.0	-1.5	-1.5	-1.5	0.0	2.0	3.5	6.0	10.4	5.0	8.6	57.9	4.1	1.9
24	45.9	NW	14:08	-1.0	-1.5	-1.5	-1.0	0.0	2.0	3.5	5.5	10.5	1.7	8.7	19.6	3.1	1.7
25	35.6	WSW	14:26	-0.5	-0.5	-0.5	-1.0	0.0	2.0	3.5	5.5	11.5	2.3	8.7	26.3	3.5	2.2
26	21.7	WNW	4:51	0.0	-0.5	-0.5	-0.5	0.0	2.0	3.5	5.5	12.0	3.9	8.8	44.4	4.0	2.0
27	40.9	ENE	21:41	-3.0	-0.5	0.0	-0.5	0.0	2.0	3.5	5.5	12.4	4.4	8.8	49.8	4.7	2.2
28	53.6	NW	13:03	-7.5	0.0	0.0	-0.5	0.0	2.0	3.5	5.5	12.0	0.1	8.9	1.1	2.3	1.9
29	23.5	S	23:29	-16.0	0.0	0.0	0.0	0.0	2.0	3.5	5.5	11.0	0.1	9.0	1.1	3.4	2.7
30	39.9	NE	22:50	-10.5	-1.5	-1.0	-0.5	0.5	2.0	3.5	5.5	10.5	0.1	9.0	1.1	2.1	1.6
31	41.8	NE	0:48	-23.5	-3.0	-2.0	-1.0	0.5	2.0	3.0	5.5	9.4	5.4	9.1	59.6	5.7	2.6
Total													115.2	259.01	44.5	124.8	54.2
Mean				-12.9	-3.0	-2.6	-2.0	0.1	2.5	3.9	6.1	9.7	1981-2010 Normal for Radiation				
Extreme	54.5	NW	12:25	1971- 2000 Normal for Soil Temperatures									101.0	259.0	39.0	126.9	68.7
Date	8				-8.4	-8.0	-7.1	-3.5	-0.1	1.7	4.6		No. of Bright Sunshine days = 28				

Note: Red numbers indicate manual calculation

### SRC proudly recognizes the following CRS supporters:

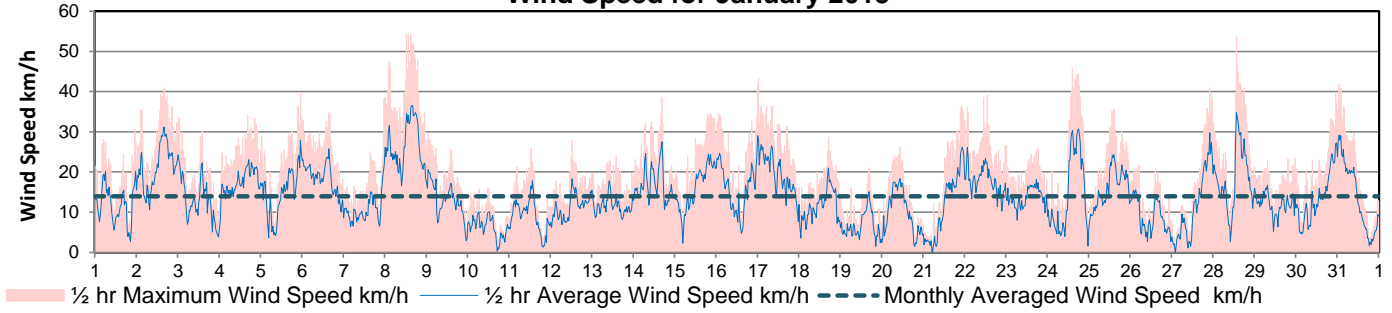


Agriculture and Agri-Food Canada

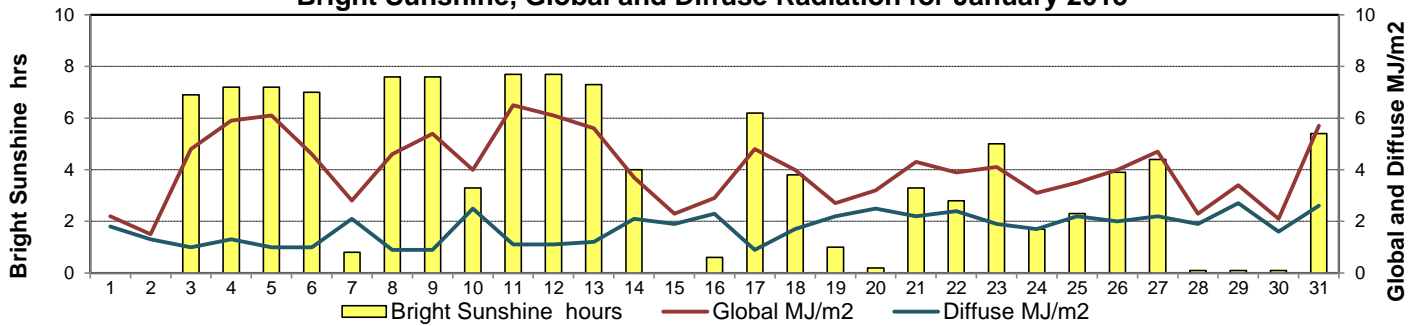
Agriculture et Agroalimentaire Canada



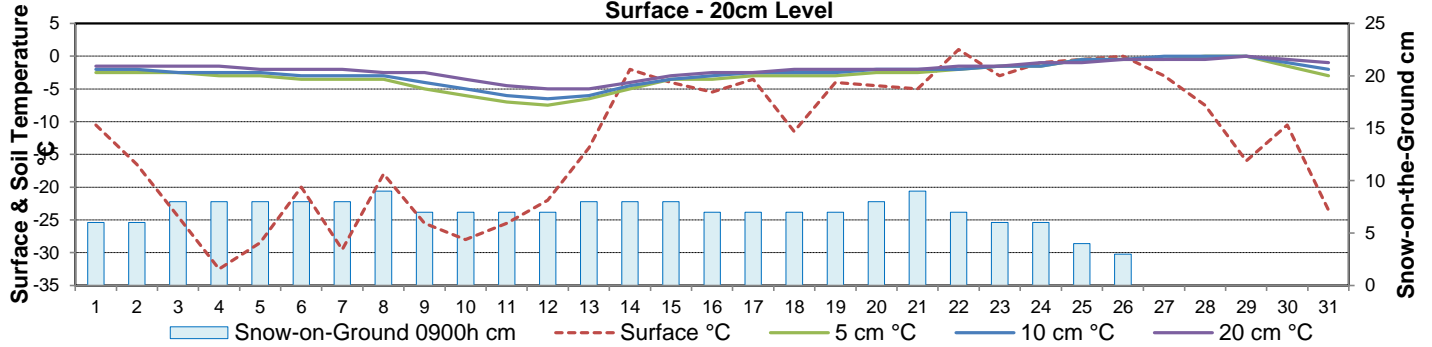
**Wind Speed for January 2015**



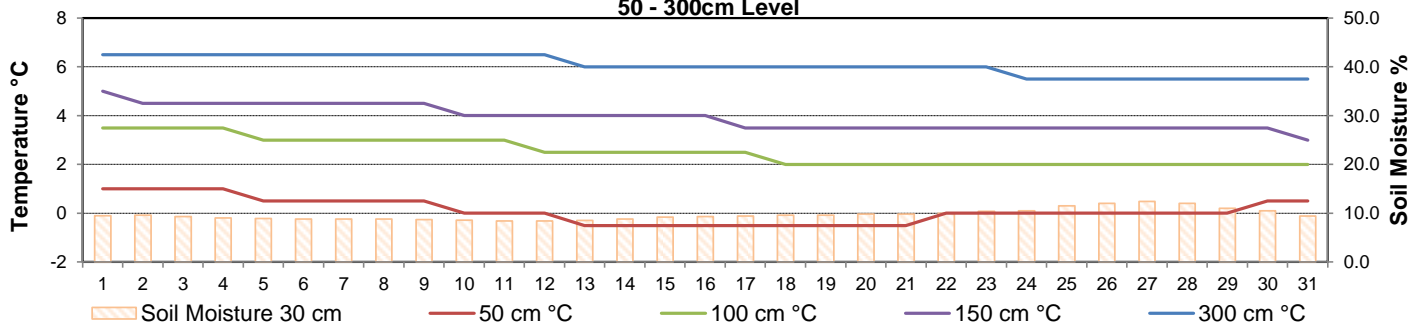
**Bright Sunshine, Global and Diffuse Radiation for January 2015**



**Soil Temperatures for January 2015  
Surface - 20cm Level**



**Soil Temperatures for January 2015  
50 - 300cm Level**





# SRC CLIMATE REFERENCE STATION DAILY DATA REPORT

## SASKATOON STATION 4057180

52°09' N 106°36' W 497 m asl Estab. 1963

Preliminary **JANUARY 2015**

### Extreme Records for January

Max/Min Temperature °C				Precipitation - Monthly mm				Wind Monthly km/h				CRS Bright Sunshine - Monthly			
S'toon Area	Date	Site	S'toon CRS Date	S'toon Area	Date	Site	S'toon CRS Date	S'toon Airport	Date	S'toon CRS**	Date	Hours	Year	No. of Days	Year
11.0	23/1980	SWT	8.1 15/2014	66.1	1911	SE	48.6 1969	111	11 <sup>W</sup> 1986	109	1986	146.9	1979	30	1993
-48.9	31/1893	SM	-43.9 *29/1969	0.0	2001, 89**12	SWT SC SE	2.6 2001					45.5	2004	15	1995

\*\*1975 forward \* more than one year

Notable Events for CRS Saskatoon - January						Saskatoon Area Stations			Glossary		
Element	Type	Day	New Record	Old Record	Year	SM	NWMP	c. 1892-1901	T	Trace of precipitation	
Temperature	Highest Maximum Daily	22	5.9	2.0	1991	SE	Eby	1901-1941	Normal	30 year average beginning with the decade	
		25	5.7	5.1	2006	US	Univ. of Sask.	1915-1964	SOG	Depth of snow-on-the-ground in cm	
	Highest Minimum Daily	17	-3.3	-5	2009	S	Saskatoon	1941-1942	na	not available	
		19	-5.3	-8.3	1974	SA	Saskatoon A	1942 -	<b>Degree-days</b>		
		22	-2.9	-4.2	2010	NRC	Nat. Res. Council	1952-1966	Tm	Mean Temperature	
		23	-2.6	-4.4	1973	SRC	Sask. Res. Council	1963-	Growing	(Tm-5°C); if Tm ≤ 5°C then GDD = 0	
		25	-2.3	-3.8	2012	SWT	S'toon Water Treatment Plant	1974 -	Heating	(18°C-Tm); if Tm ≤ 18°C then HDD = 0	
		26	0.8	-1.2	2006	SC	S'toon Central Ave	1974-1989	Cooling	(Tm-18°C); if Tm ≥ 18°C then CDD = 0	
	Highest Mean Daily	27	-2.5	-4.1	2011	S1	Saskatoon 1	1976-1978	Extreme Cooling	(Tm-24°C); if Tm ≥ 24°C then CDD = 0	
		17	-0.3	-2	2014	S2	Saskatoon 2	1977-1990			
		19	-2.3	-4.4	2009	K	S'toon Kernen Farm	1993-2004			
		22	1.5	-3.1	1977	KCS	S'toon Kernen Farm CS	1996-			
		23	0.2	-0.3	1973	RCS	Environment Canada	2008-			
		25	1.7	0.3	2012	SF	Sutherland Forestry	1943-1970			
	26	3.2	1.7	2006							
	27	1	-0.3	1989							

Driest January since 2003 (7.2 mm)

Continuous snow pack disappeared 27 Jan 2014. **First time** since SRC CRS S'toon started recording snow depth measurements (Jan 1967) there wasn't a continuous snow pack at end of January

### SRC proudly recognizes the following CRS supporters:

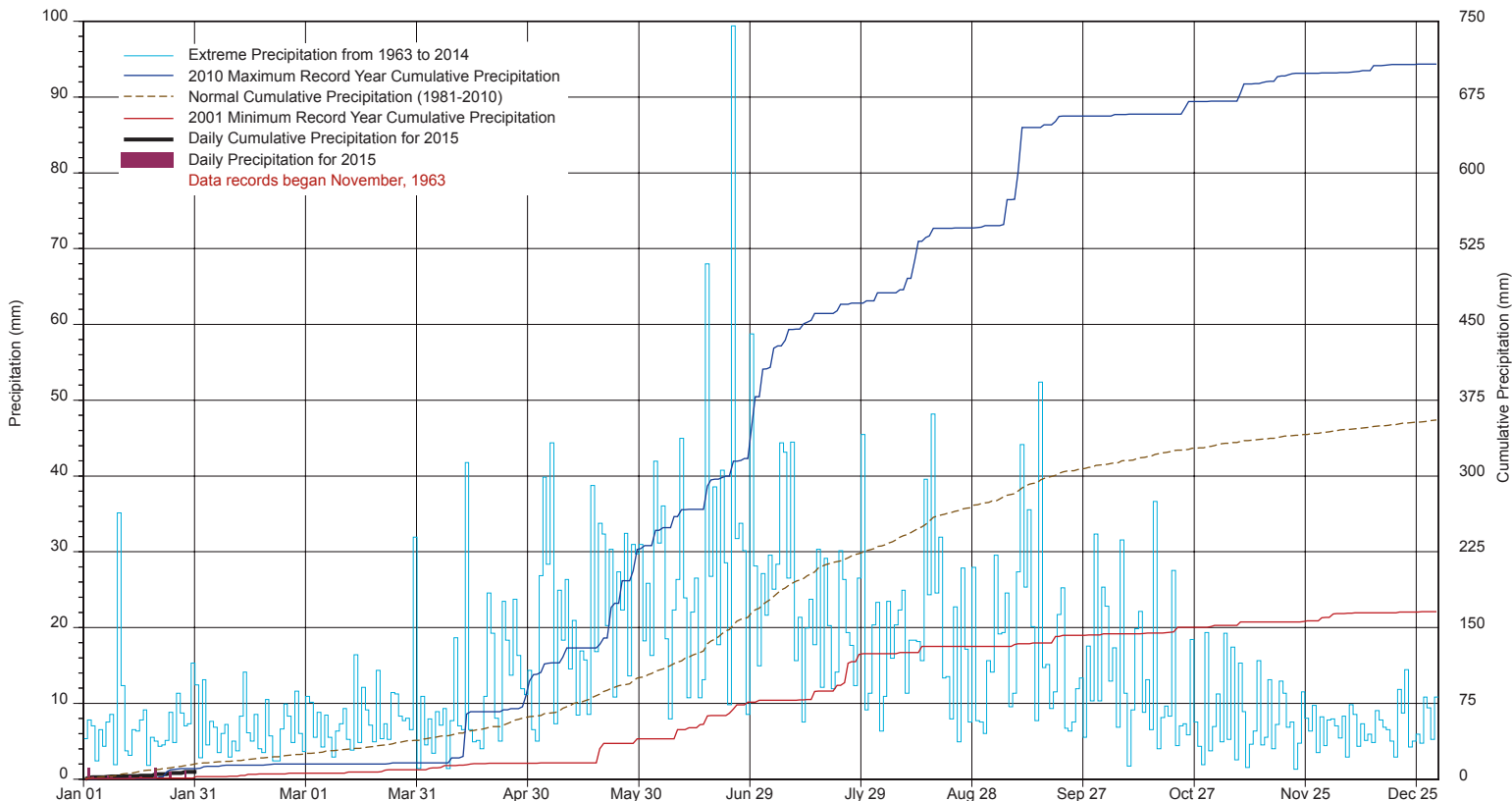


Agriculture and Agri-Food Canada

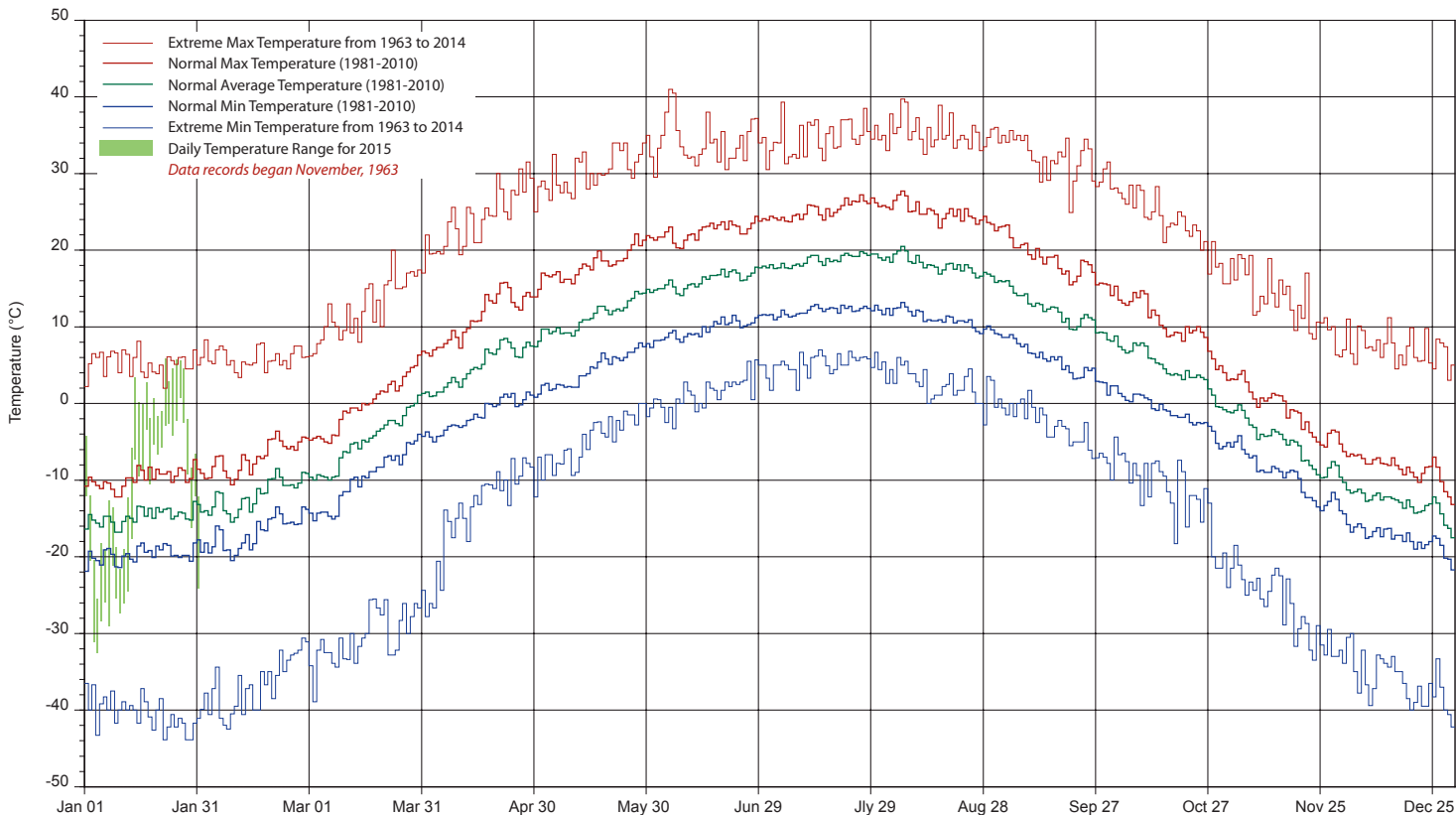
Agriculture et Agroalimentaire Canada



# SASKATCHEWAN RESEARCH COUNCIL SASKATOON CLIMATE REFERENCE STATION 2015 PRECIPITATION AND NORMALS



## 2015 TEMPERATURES AND NORMALS



SRC proudly recognizes the following CRS supporters:



Agriculture and  
Agri-Food Canada

Agriculture et  
Agroalimentaire Canada

