



SRC CLIMATE REFERENCE STATION DAILY DATA REPORT

CONSERVATION LEARNING CENTRE

Saskatchewan 53.03°N 105.77°W Estab. 2011

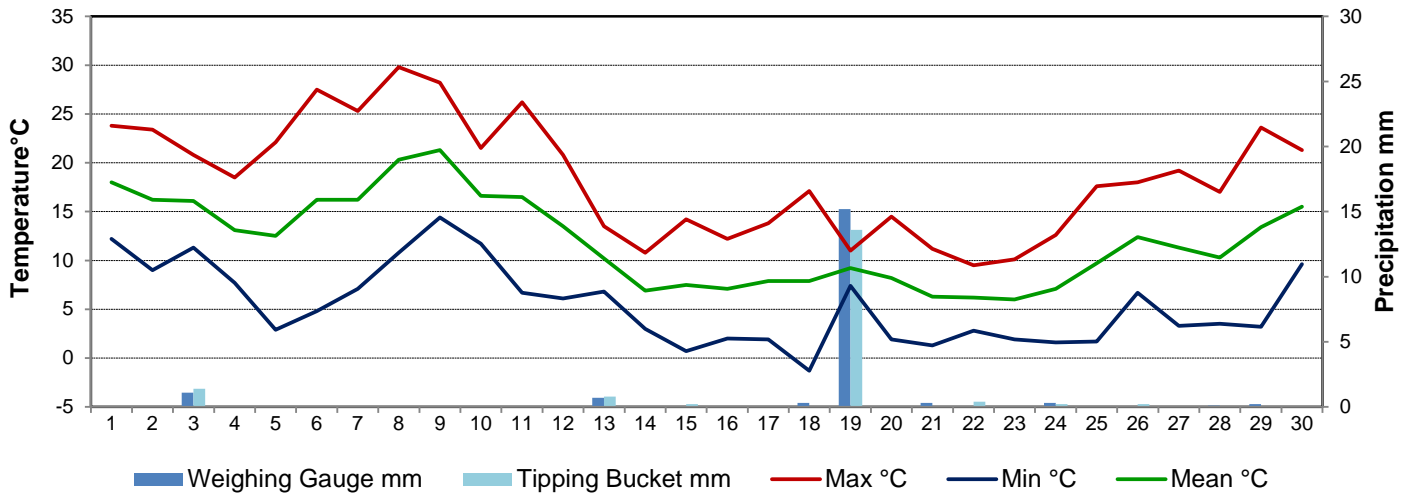
Preliminary **September 2017**

Day	Temperature			Degree-days			Precipitation			Relative Humidity		Station Pressure <i>corrected to sea level</i>	
	Max	Min	Mean	Growing	Heating	Cooling	Weighing Gauge	Tipping Bucket	Snow-on-Ground 0900h	Max ½ hr Avg	Min ½ hr Avg	Max ½ hr Avg	Min ½ hr Avg
	°C	°C	°C	5°C base	18°C base	18°C base	mm	mm	cm	%	%	mbar	mbar
1	23.8	12.2	18.0	13.0	0.0	0.0	0.0	0.0	-	77	26	1011	1005
2	23.4	9.0	16.2	11.2	1.8	0.0	0.0	0.0	-	78	27	1013	1009
3	20.8	11.3	16.1	11.1	1.9	0.0	1.1	1.4	-	86	34	1017	1010
4	18.5	7.7	13.1	8.1	4.9	0.0	0.0	0.0	-	79	38	1024	1017
5	22.1	2.9	12.5	7.5	5.5	0.0	0.0	0.0	-	92	28	1025	1019
6	27.5	4.8	16.2	11.2	1.8	0.0	0.0	0.0	-	85	22	1019	1013
7	25.3	7.1	16.2	11.2	1.8	0.0	0.0	0.0	-	93	32	1016	1014
8	29.8	10.8	20.3	15.3	0.0	2.3	0.0	0.0	-	75	20	1015	1009
9	28.2	14.4	21.3	16.3	0.0	3.3	0.0	0.0	-	65	28	1009	1002
10	21.5	11.7	16.6	11.6	1.4	0.0	0.0	0.0	-	70	26	1014	1000
11	26.2	6.7	16.5	11.5	1.5	0.0	0.0	0.0	-	83	20	1015	1006
12	20.8	6.1	13.5	8.5	4.5	0.0	0.0	0.0	-	89	29	1012	1006
13	13.5	6.8	10.2	5.2	7.8	0.0	0.7	0.8	-	90	53	1014	1012
14	10.8	3.0	6.9	1.9	11.1	0.0	0.0	0.0	-	93	57	1020	1014
15	14.2	0.7	7.5	2.5	10.5	0.0	0.0	0.2	-	93	41	1024	1020
16	12.2	2.0	7.1	2.1	10.9	0.0	0.0	0.0	-	92	47	1024	1018
17	13.8	1.9	7.9	2.9	10.1	0.0	0.0	0.0	-	93	35	1018	1011
18	17.1	-1.3	7.9	2.9	10.1	0.0	0.3	0.0	-	90	41	1011	1002
19	11.0	7.4	9.2	4.2	8.8	0.0	15.2	13.6	-	93	73	1002	993
20	14.5	1.9	8.2	3.2	9.8	0.0	0.0	0.0	-	91	46	996	992
21	11.2	1.3	6.3	1.3	11.7	0.0	0.3	0.0	-	92	62	1012	996
22	9.5	2.8	6.2	1.2	11.8	0.0	0.0	0.4	-	93	61	1017	1012
23	10.1	1.9	6.0	1.0	12.0	0.0	0.0	0.0	-	93	65	1019	1017
24	12.6	1.6	7.1	2.1	10.9	0.0	0.3	0.2	-	94	50	1019	1016
25	17.6	1.7	9.7	4.7	8.3	0.0	0.0	0.0	-	85	33	1016	1014
26	18.0	6.7	12.4	7.4	5.6	0.0	0.0	0.2	-	88	43	1015	1013
27	19.2	3.3	11.3	6.3	6.7	0.0	0.0	0.0	-	94	37	1019	1015
28	17.0	3.5	10.3	5.3	7.7	0.0	0.1	0.0	-	92	41	1024	1019
29	23.6	3.2	13.4	8.4	4.6	0.0	0.2	0.0	-	89	30	1022	1010
30	21.3	9.6	15.5	10.5	2.5	0.0	0.0	0.0	-	82	42	1010	998
Total				209.6	186.0	5.6	18.2	16.8					
Avg	18.5	5.4	12.0				221.9	Cumulative ppt					
Extreme	29.8	-1.3					15.2	13.6	0	94	20	1025	992
Date	8	18					19	19		24	8	5	20

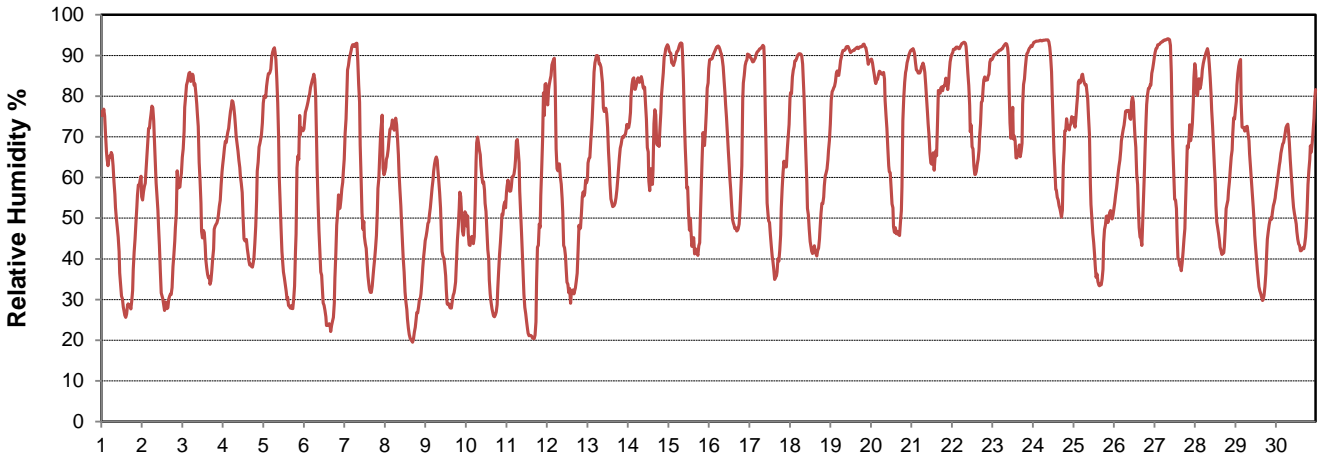
SRC proudly recognizes the following CRS supporters:



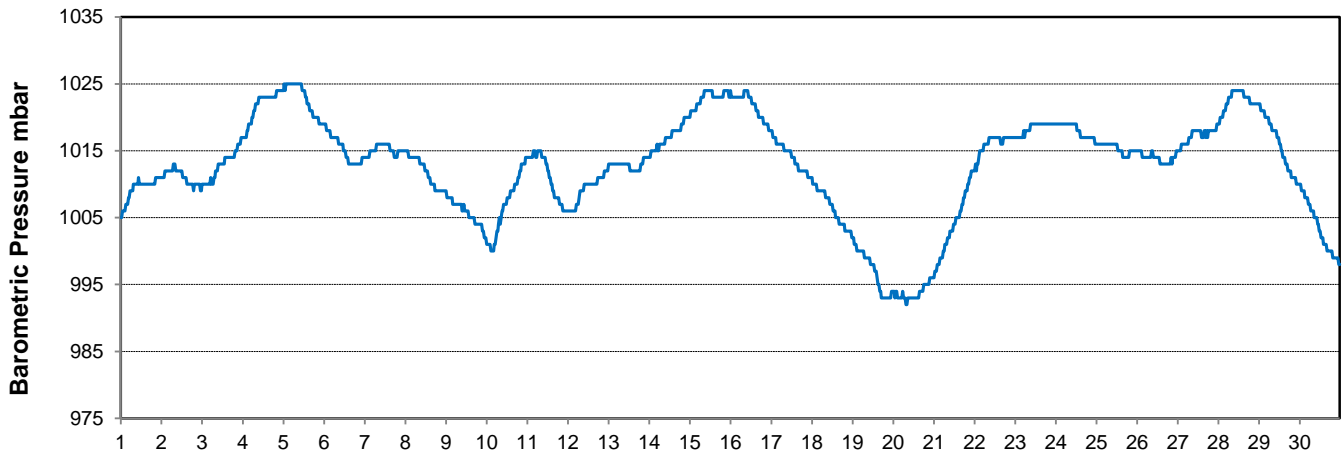
Temperature and Precipitation for September 2017



Relative Humidity for September 2017



Barometric Pressure Corrected to Sea Level for September 2017





SRC CLIMATE REFERENCE STATION DAILY DATA REPORT

CONSERVATION LEARNING CENTRE

Saskatchewan 53.03°N 105.77°W Estab. 2011

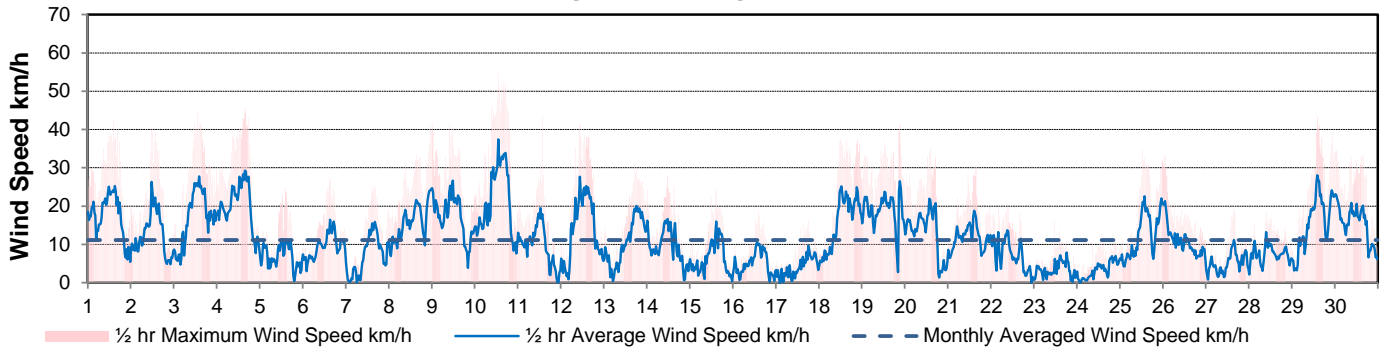
Preliminary **September 2017**

Day	Wind Gust			Soil Temperatures at 0900hrs								Soil Moisture	Radiation		
	Max	Direction	Time	Surface	5 cm	10 cm	20 cm	50 cm	100 cm	150 cm	300 cm	0900hrs	Bright Sunshine	Global	Diffuse
	km/h			°C	°C	°C	°C	°C	°C	°C	°C	%	hours	MJ/m ²	MJ/m ²
1	42.5	WNW	14:28	16.5	15.0	15.0	15.0	14.0	12.5	11.0	7.0	17	12.4	18.9	4.5
2	40.0	W	11:48	16.0	13.5	13.5	14.5	14.0	12.5	11.0	7.0	17	10.8	17.8	4.7
3	45.0	NNW	13:15	14.0	14.0	14.5	14.5	13.5	12.5	11.0	7.0	17	9.5	18.1	3.7
4	45.3	NNW	15:58	12.5	13.0	13.5	14.0	13.5	12.5	11.0	7.0	17	11.2	16.9	5.1
5	24.5	W	14:17	10.5	11.0	12.0	13.5	13.5	12.5	11.0	7.5	16	12.9	18.2	3.6
6	27.1	NNW	15:27	14.0	11.0	12.0	13.0	13.0	12.5	11.0	7.5	16	12.6	17.7	3.3
7	25.2	ESE	15:55	12.5	12.0	12.5	13.5	13.0	12.5	11.0	7.5	16	11.1	15.4	5.9
8	41.1	SSW	23:11	15.5	12.5	13.0	13.5	13.0	12.0	11.0	7.5	16	12.3	18.2	2.8
9	41.8	S	0:18	18.0	14.0	14.0	14.0	13.0	12.0	11.0	7.5	16	10.6	13.1	7.0
10	54.8	W	13:08	18.5	15.0	14.5	14.5	13.5	12.0	11.0	7.5	16	9.2	15.4	4.2
11	43.5	WSW	13:44	13.5	12.0	12.5	13.5	13.5	12.0	11.0	7.5	16	11.5	16.7	2.8
12	41.4	NNW	10:21	17.0	12.0	12.5	13.5	13.0	12.0	11.0	7.5	16	11.5	16.7	2.9
13	30.9	NE	17:25	10.0	12.5	13.0	13.5	13.0	12.0	11.0	7.5	15	1.4	7.6	6.1
14	27.8	NE	11:51	8.5	11.0	11.5	12.5	13.0	12.0	11.0	7.5	15	1.2	7.1	6.1
15	24.4	N	14:25	6.0	9.0	10.0	11.5	12.5	12.0	11.0	7.5	15	7.3	12.3	4.7
16	18.8	ENE	14:02	6.5	9.5	10.0	11.5	12.0	12.0	11.0	7.5	15	0.3	7.4	6.4
17	16.4	E	18:21	5.5	9.0	9.5	11.0	12.0	12.0	11.0	7.5	15	7.9	11.7	7.2
18	37.6	ESE	12:21	4.0	8.0	8.5	10.5	11.5	11.5	11.0	7.5	15	10.3	14.1	4.4
19	41.2	WNW	21:15	10.5	10.5	10.5	11.0	11.0	11.5	10.5	7.5	15	0.0	1.9	1.7
20	35.1	WSW	14:05	6.5	9.5	9.5	10.5	10.5	10.5	10.5	6.5	23	10.0	14.3	6.2
21	30.5	WNW	15:46	6.0	8.0	9.0	10.5	11.0	11.0	10.5	7.5	22	5.7	10.1	4.7
22	19.6	NE	9:08	5.5	9.0	9.0	10.0	11.0	11.0	10.5	7.5	22	2.5	7.6	5.3
23	16.2	WNW	11:49	6.5	9.0	9.5	10.0	10.5	11.0	10.5	7.5	22	2.0	6.8	5.8
24	13.0	ESE	13:58	6.5	9.0	9.5	10.0	11.0	11.0	10.5	7.5	22	3.7	8.2	6.1
25	34.8	SSW	12:52	6.5	8.5	9.0	10.0	10.5	11.0	10.5	7.5	22	8.7	13.6	2.7
26	33.2	S	1:17	8.0	9.5	10.0	10.5	10.5	11.0	10.5	8.0	22	3.7	6.9	4.0
27	19.3	NW	15:49	7.5	9.0	9.5	10.5	11.0	10.5	10.5	8.0	22	6.3	9.9	6.0
28	18.3	E	9:38	7.0	9.0	9.5	10.5	11.0	10.5	10.5	8.0	22	11.3	13.7	1.6
29	43.1	SSE	14:27	11.0	8.5	9.0	10.0	10.5	10.5	10.5	8.0	21	11.2	13.5	1.6
30	34.6	S	0:48	12.5	10.0	10.5	10.5	10.5	10.5	10.0	8.0	21	11.2	13.0	1.8
Total													240.3	382.8	132.9
Mean				10.4	10.8	11.2	12.1	12.1	11.6	10.8	7.5	18.1			
Extreme	54.8	W	13:08												
Date	10														

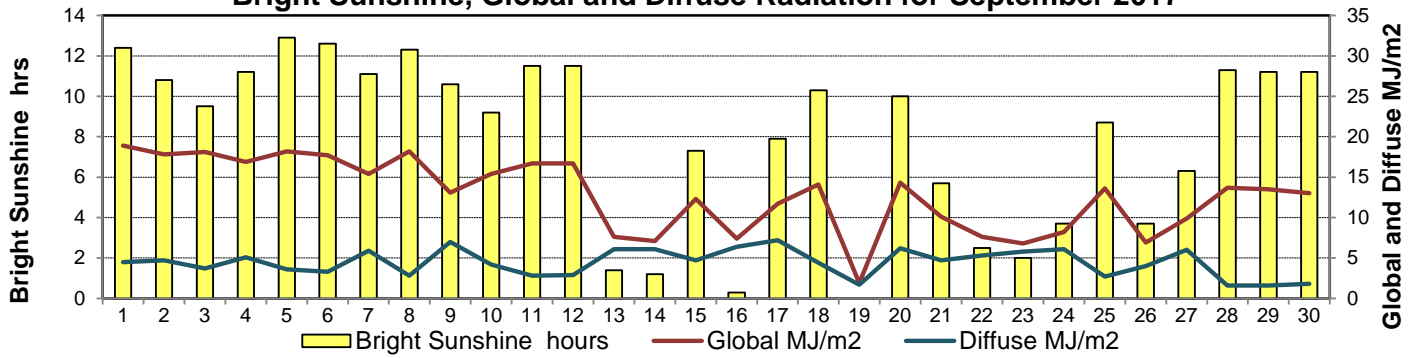
GLOSSARY OF TERMS

Degree-days	Radiation
Tm Mean Temperature	Bright Sunshine is the unobstructed direct radiation from the sun, as opposed to the shading of a location by clouds or by other atmospheric obstructions.
Growing (Tm-5°C); if Tm ≤ 5°C then GDD = 0	
Heating (18°C-Tm); if Tm ≥ 18°C then HDD = 0	Diffuse is radiation reaching the earth's surface after having been scattered from the direct solar beam
Cooling (Tm-18°C); if Tm ≤ 18°C then CDD = 0	Global is the sum of the direct solar and diffuse radiation
T Trace of Precipitation	Relative Humidity The ratio of the air's water vapour content to its water vapour capacity which changes with temperature.
SOG Depth of snow-on-the-ground	
Red Cell no data available	Air Pressure The force exerted by the weight of a column of air above a given point
Red Number manual calculation	Wind Gust The daily highest instantaneous value recorded irrespective of direction and/or duration

Wind Speed for September 2017

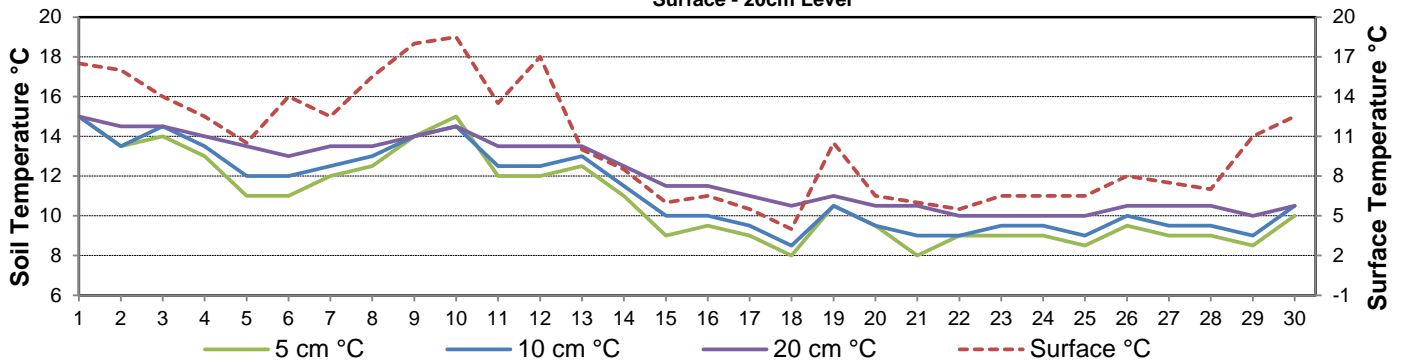


Bright Sunshine, Global and Diffuse Radiation for September 2017



Soil Temperatures for September 2017

Surface - 20cm Level



Soil Temperatures for September 2017

50 - 300cm Level

