



# SRC CLIMATE REFERENCE STATION DAILY DATA REPORT

## CONSERVATION LEARNING CENTRE

Saskatchewan 53.03°N 105.77°W Estab. 2011

Preliminary

April 2014

Day	Temperature			Degree-days			Precipitation			Relative Humidity		Station Pressure <i>corrected to sea level</i>	
	Max	Min	Mean	Growing	Heating	Cooling	Weighing Gauge	Notes	Snow-on-Ground 0900h	Max ½ hr Avg	Min ½ hr Avg	Max ½ hr Avg	Min ½ hr Avg
	°C	°C	°C	5°C base	18°C base	18°C base	mm		cm	%	%	mbar	mbar
1	-5.0	-21.9	-13.5	0.0	31.5	0.0	0.3		43	87	55	1021	1015
2	0.8	-9.4	-4.3	0.0	22.3	0.0	0.0		42	86	52	1016	1014
3	6.6	-10.3	-1.9	0.0	19.9	0.0	0.0		41	88	30	1018	1015
4	1.7	-10.8	-4.6	0.0	22.6	0.0	0.0		41	92	71	1016	1000
5	5.4	-6.6	-0.6	0.0	18.6	0.0	0.0		41	85	33	1009	1002
6	3.7	-3.2	0.3	0.0	17.7	0.0	0.3		38	90	72	1009	1004
7	9.3	-1.5	3.9	0.0	14.1	0.0	0.0		35	93	49	1013	1008
8	12.7	-1.7	5.5	0.5	12.5	0.0	0.0		34	88	53	1011	997
9	8.9	-0.5	4.2	0.0	13.8	0.0	0.0		25	80	40	1003	994
10	8.8	-0.7	4.1	0.0	13.9	0.0	0.0		23	86	43	1009	1003
11	2.2	-3.6	-0.7	0.0	18.7	0.0	4.9		18	95	65	1012	1007
12	-2.7	-8.0	-5.4	0.0	23.4	0.0	2.5		16	93	65	1021	1006
13	-2.3	-11.9	-7.1	0.0	25.1	0.0	0.0		14	87	48	1027	1021
14	-2.4	-15.5	-9.0	0.0	27.0	0.0	0.0		14	91	41	1027	1013
15	-1.6	-8.0	-4.8	0.0	22.8	0.0	0.0		12	85	51	1017	1009
16	-1.9	-11.1	-6.5	0.0	24.5	0.0	0.0		10	70	48	1025	1018
17	2.1	-9.7	-3.8	0.0	21.8	0.0	0.0		10	75	51	1024	1016
18	0.0	-2.8	-1.4	0.0	19.4	0.0	7.4		16	95	64	1016	1006
19	3.9	-2.6	0.7	0.0	17.3	0.0	0.3		27	92	66	1011	1005
20	7.2	-4.1	1.6	0.0	16.4	0.0	0.0		21	95	59	1016	1010
21	13.2	0.1	6.7	1.7	11.3	0.0	0.0		15	90	48	1018	1014
22	15.2	0.5	7.9	2.9	10.1	0.0	0.0		10	90	51	1014	1007
23	9.9	1.8	5.9	0.9	12.1	0.0	7.3		0	90	53	1007	1002
24	1.8	-1.0	0.4	0.0	17.6	0.0	3.8		0	94	91	1008	1002
25	1.7	-1.4	0.2	0.0	17.8	0.0	1.3		0	95	88	1013	1008
26	4.1	-0.3	1.9	0.0	16.1	0.0	0.2		0	96	86	1013	1009
27	7.5	0.3	3.9	0.0	14.1	0.0	4.1		0	92	58	1009	1006
28	2.1	-0.2	1.0	0.0	17.0	0.0	10.9		0	96	87	1022	1008
29	8.4	-0.2	4.1	0.0	13.9	0.0	9.2		0	96	70	1030	1022
30	15.9	0.9	8.4	3.4	9.6	0.0	0.0		0	94	39	1029	1022
Total				9.4	542.9	0.0	52.5						
Avg	4.6	-4.8	-0.1				78.6	Cumulative ppt 2014					
Extreme	15.9	-21.9					10.9		43	96	30	1030	994
Date	30	1					28		1	26	3	29	9
Site Extreme	18.8	-17.6					41.6						
Date	04/2012	10/2013					2012						

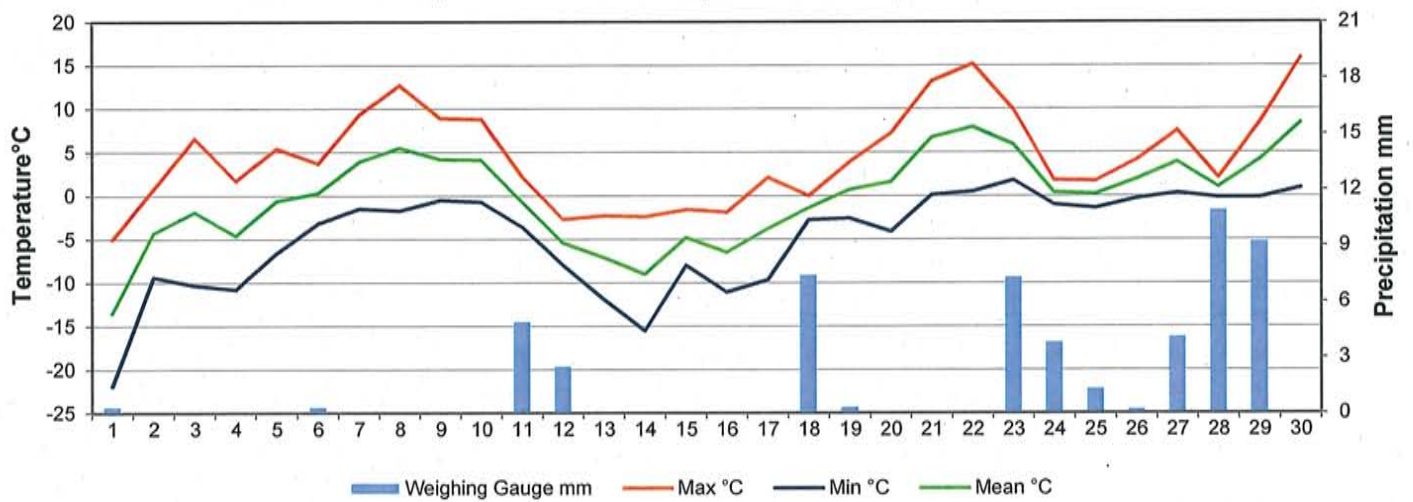


Agriculture and Agri-Food Canada

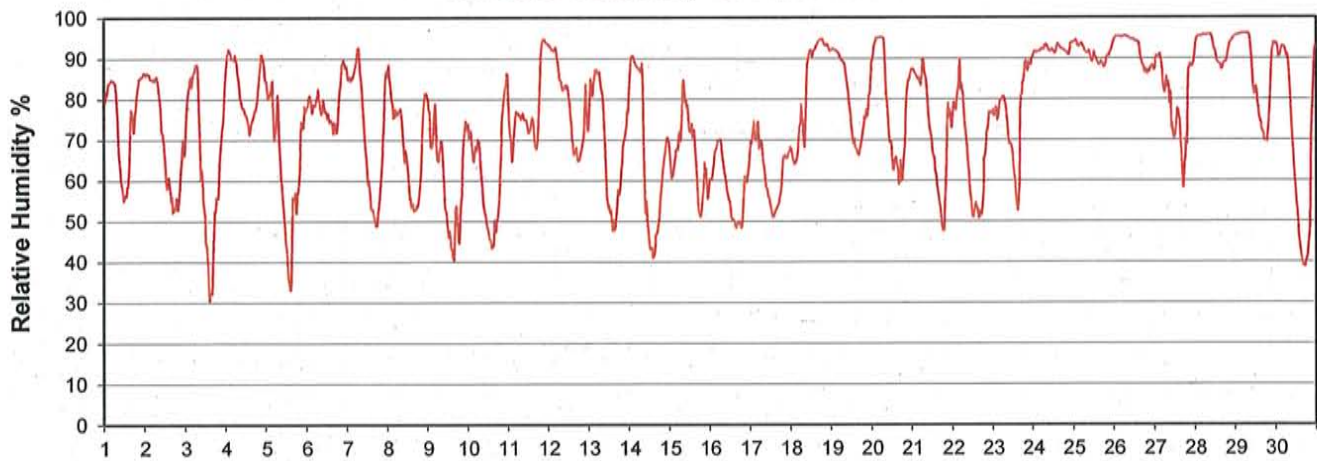
Agriculture et Agroalimentaire Canada



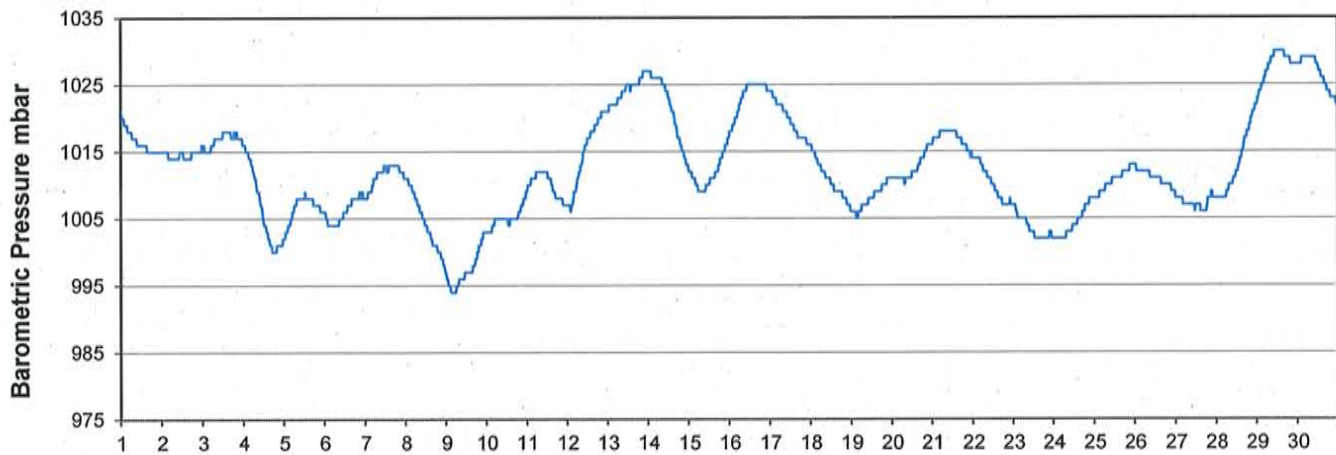
### Temperature and Precipitation for April 2014



### Relative Humidity for April 2014



### Barometric Pressure Corrected to Sea Level for April 2014





# SRC CLIMATE REFERENCE STATION DAILY DATA REPORT

## CONSERVATION LEARNING CENTRE

Saskatchewan 53.03°N 105.77°W Estab. 2011

Preliminary

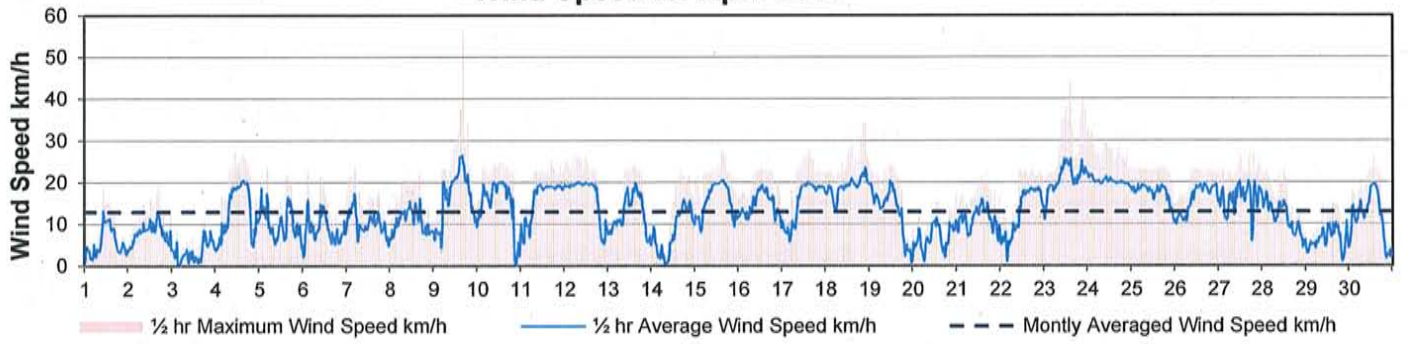
April 2014

Day	Wind Gust			Soil Temperatures at 0900hrs								Soil Moisture 30 cm	Radiation		
	Max	Direction	Time	Surface	5 cm	10 cm	20 cm	50 cm	100 cm	150 cm	300 cm	0900hrs	Bright Sunshine	Global	Diffuse
	km/h			°C	°C	°C	°C	°C	°C	°C	°C	%	hours	MJ/m <sup>2</sup>	MJ/m <sup>2</sup>
1	19.1	S	10:22	-12.5	-1.5	-1.5	-1.0	0.0	0.5	1.5	4.0	12	1.1	10.8	9.6
2	19.3	ESE	17:11	-7.0	-2.0	-1.5	-1.5	0.0	0.5	1.5	4.0	13	7.1	16.7	9.0
3	12.3	SSW	17:22	-7.0	-1.5	-1.5	-1.0	-0.5	0.5	1.5	4.0	13	11.6	20.2	3.7
4	27.2	SSE	10:34	-3.5	-1.5	-1.5	-1.0	-0.5	0.5	1.5	4.0	13	2.7	11.0	9.1
5	23.8	W	1:11	-4.0	-1.5	-1.5	-1.0	-0.5	0.5	1.5	4.0	13	10.8	20.7	5.3
6	22.5	S	2:30	-1.0	-1.0	-1.0	-1.0	-0.5	0.5	1.5	4.0	14	9.4	17.7	10.5
7	23.6	WNW	4:32	1.0	-1.0	-1.0	-1.0	-0.5	0.5	1.5	3.5	15	11.8	21.0	4.1
8	22.9	SSW	11:24	2.0	-1.0	-1.0	-1.0	-0.5	0.5	1.5	4.0	15	10.4	18.9	7.4
9	55.9	NW	16:08	3.5	0.0	0.0	0.0	0.0	0.5	1.5	3.5	16	9.0	18.7	4.3
10	27.0	WNW	13:09	2.5	0.0	0.0	0.0	0.0	0.5	1.5	3.5	17	10.1	18.5	4.0
11	25.4	E	16:42	-1.5	0.0	0.0	0.0	0.0	0.5	1.5	3.5	27	5.4	14.6	8.9
12	26.8	N	7:34	-6.0	-0.5	-0.5	-0.5	-0.5	0.0	1.0	2.5	29	2.1	16.6	12.9
13	23.9	WNW	13:03	-6.0	-0.5	-0.5	-0.5	-0.5	0.5	1.0	3.0	29	11.1	23.0	10.7
14	22.7	SE	15:34	-9.5	0.0	0.0	0.0	0.0	0.5	1.5	3.5	29	11.6	23.7	4.2
15	27.2	E	14:59	-3.0	0.0	0.0	0.0	0.0	0.5	1.5	3.5	28	3.7	16.3	12.7
16	23.4	E	11:27	-7.5	0.0	0.0	0.0	0.0	0.5	1.5	3.5	27	13.6	23.8	3.9
17	28.7	ESE	14:01	-3.5	0.0	0.0	0.0	0.0	0.5	1.5	3.5	26	7.9	18.1	11.1
18	34.2	E	21:41	-0.5	0.0	0.0	0.0	0.0	0.5	1.5	3.5	26	0.0	5.9	5.3
19	24.6	ENE	0:12	-1.0	-1.0	-1.0	-1.0	-1.0	0.0	0.5	2.0	26	1.5	16.1	13.5
20	17.4	W	23:51	1.0	-0.5	-0.5	-0.5	-0.5	0.5	1.0	3.0	26	6.3	16.9	10.3
21	22.3	SW	16:44	2.0	-0.5	-0.5	-0.5	-0.5	0.5	1.0	3.0	27	10.8	22.6	3.8
22	23.5	ESE	17:23	6.5	0.0	0.0	0.0	0.0	0.5	1.5	3.5	28	12.3	20.8	7.1
23	44.3	ENE	14:35	5.5	0.0	0.0	0.0	0.0	0.5	1.5	3.5	31	0.4	5.7	4.9
24	32.7	ESE	0:03	1.0	-0.5	-0.5	-1.0	-1.0	0.0	0.5	2.0	41	0.0	5.1	4.6
25	23.6	ENE	10:53	-0.5	-1.5	-1.5	-2.0	-2.0	-0.5	0.0	1.0	40	0.0	9.6	8.6
26	23.7	ENE	16:19	1.0	-1.5	-1.5	-2.0	-2.0	-0.5	0.0	1.0	42	0.0	4.5	4.0
27	30.2	ESE	17:09	3.0	-1.5	-2.5	-3.0	-2.5	-1.5	-0.5	0.0	42	0.0	2.3	2.1
28	22.8	E	2:08	0.0	-1.0	-1.5	-1.5	-1.5	-0.5	0.5	1.5	44	0.0	6.9	6.2
29	17.4	N	16:54	1.0	-1.5	-2.0	-2.0	-2.0	-0.5	0.0	1.0	45	6.6	19.2	9.8
30	25.8	NNW	13:46	6.0	-0.5	-0.5	-0.5	-1.0	0.0	0.5	2.0	45	13.8	25.5	3.3
Total													191.1	471.4	214.9
Mean				-1.3	-0.7	-0.8	-0.8	-0.6	0.2	1.1	3.0	26.6			
Extreme	55.9	NW	16:08												
Date	9														
Site															
Extreme															

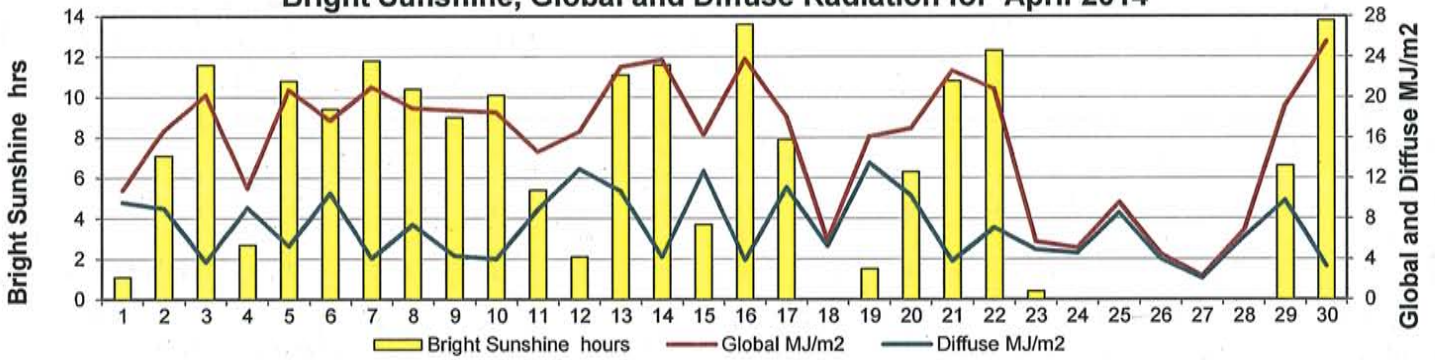
### GLOSSARY OF TERMS

Tm	Mean Temperature	Bright Sunshine	is the unobstructed direct radiation from the sun, as opposed to the shading of a location by clouds or by other atmospheric obstructions.
Growing	(Tm-5°C); if Tm ≤ 5°C then GDD = 0	Diffuse	is radiation reaching the earth's surface after having been scattered from the direct solar beam
Heating	(18°C-Tm); if Tm ≥ 18°C then HDD = 0	Global	is the sum of the direct solar and diffuse radiation
Cooling	(Tm-18°C); if Tm ≤ 18°C then CDD = 0	Relative Humidity	The ratio of the air's water vapour content to its water vapour capacity which changes with temperature.
T	Trace of Precipitation	Air Pressure	The force exerted by the weight of a column of air above a given point
SOG	Depth of snow-on-the-ground	Wind Gust	The daily highest instantaneous value recorded irrespective of direction and/or duration
Red Cell	no data available		
Red Number	manual calculation		

**Wind Speed for April 2014**

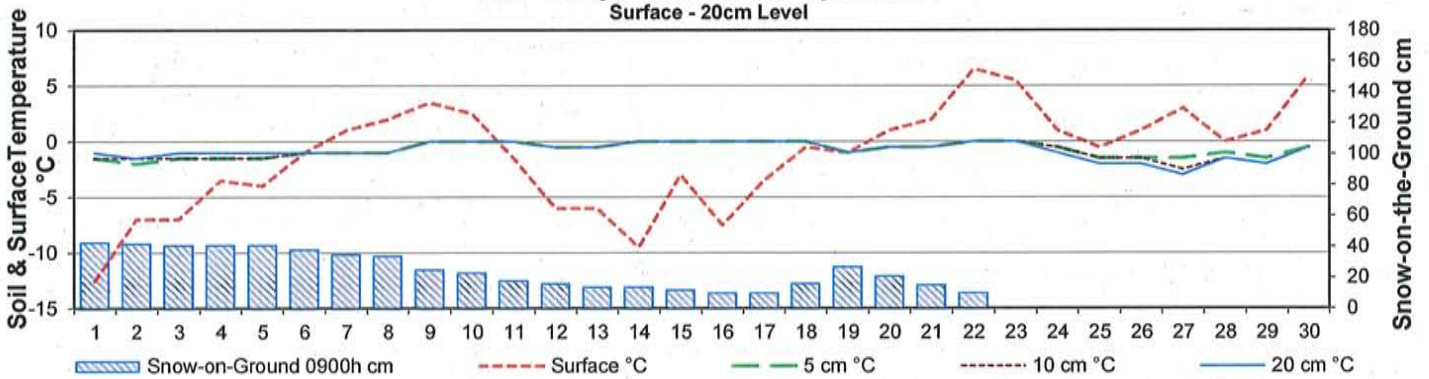


**Bright Sunshine, Global and Diffuse Radiation for April 2014**



**Soil Temperatures for April 2014**

Surface - 20cm Level



**Soil Temperatures for April 2014**

50 - 300cm Level

