



SRC CLIMATE REFERENCE STATION DAILY DATA REPORT

CONSERVATION LEARNING CENTRE

Saskatchewan 53.03°N 105.77°W Estab. 2011

Preliminary

April 2019

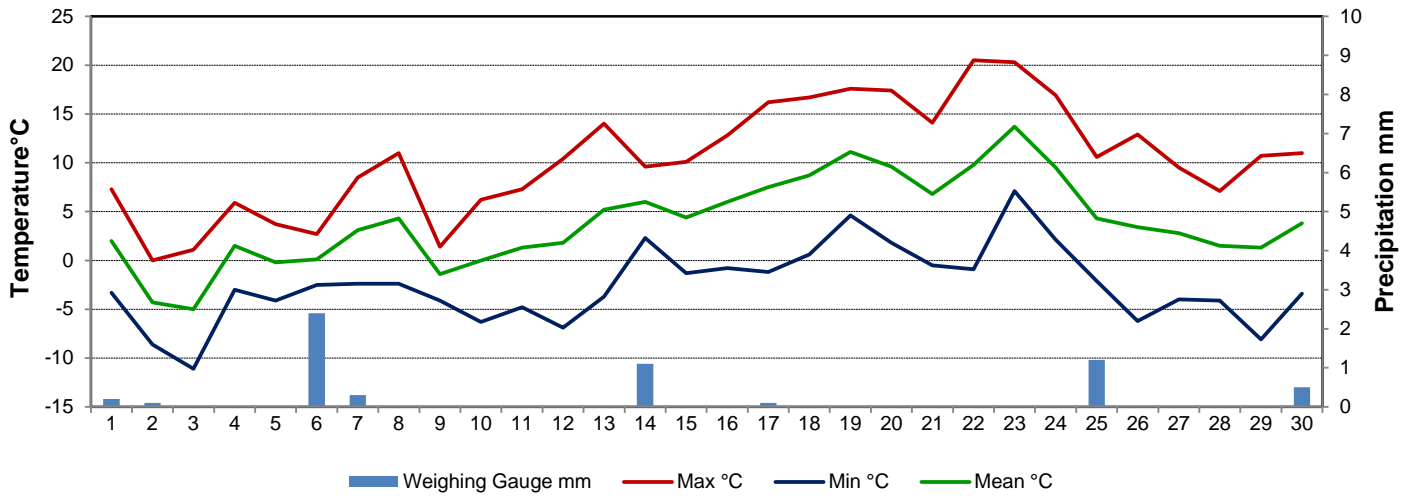
Day	Temperature			Degree-days			Precipitation			Relative Humidity		Station Pressure <i>corrected to sea level</i>	
	Max	Min	Mean	Growing	Heating	Cooling	Weighing Gauge	Notes	Snow-on-Ground 0900h	Max ½ hr Avg	Min ½ hr Avg	Max ½ hr Avg	Min ½ hr Avg
	°C	°C	°C	5°C base	18°C base	18°C base	mm		cm	%	%	mbar	mbar
1	7.3	-3.3	2.0	0.0	16.0	0.0	0.2		22	94	50	1018	1008
2	0.0	-8.6	-4.3	0.0	22.3	0.0	0.1	Discontinuous snow cover	19	82	47	1014	1011
3	1.1	-11.1	-5.0	0.0	23.0	0.0	0.0		20	96	46	1017	1007
4	5.9	-3.0	1.5	0.0	16.5	0.0	0.0		18	93	53	1015	1005
5	3.7	-4.1	-0.2	0.0	18.2	0.0	0.0	there's a snow bank under the snow depth sensor	15	88	57	1017	1013
6	2.7	-2.5	0.1	0.0	17.9	0.0	2.4		15	100	81	1013	1003
7	8.5	-2.4	3.1	0.0	14.9	0.0	0.3		15	100	78	1007	1002
8	11.0	-2.4	4.3	0.0	13.7	0.0	0.0		10	100	64	1015	1007
9	1.4	-4.1	-1.4	0.0	19.4	0.0	0.0		-	98	78	1021	1016
10	6.2	-6.3	0.0	0.0	18.0	0.0	0.0		-	97	55	1022	1021
11	7.3	-4.8	1.3	0.0	16.7	0.0	0.0		-	95	32	1022	1018
12	10.4	-6.9	1.8	0.0	16.2	0.0	0.0		-	99	25	1018	1011
13	14.0	-3.7	5.2	0.2	12.8	0.0	0.0		-	81	17	1011	1000
14	9.6	2.3	6.0	1.0	12.0	0.0	1.1		-	100	41	999	992
15	10.1	-1.3	4.4	0.0	13.6	0.0	0.0		-	100	62	1004	994
16	12.8	-0.8	6.0	1.0	12.0	0.0	0.0		-	97	29	1011	1004
17	16.2	-1.2	7.5	2.5	10.5	0.0	0.1		-	91	36	1011	1007
18	16.7	0.6	8.7	3.7	9.3	0.0	0.0		-	97	27	1015	1007
19	17.6	4.6	11.1	6.1	6.9	0.0	0.0		-	70	35	1007	999
20	17.4	1.8	9.6	4.6	8.4	0.0	0.0		-	68	17	1012	1002
21	14.1	-0.5	6.8	1.8	11.2	0.0	0.0		-	83	30	1021	1012
22	20.5	-0.9	9.8	4.8	8.2	0.0	0.0		-	94	18	1022	1004
23	20.3	7.1	13.7	8.7	4.3	0.0	0.0		-	58	17	1005	1001
24	16.9	2.1	9.5	4.5	8.5	0.0	0.0		-	76	17	1010	1005
25	10.6	-2.1	4.3	0.0	13.7	0.0	1.2		-	96	21	1018	1011
26	12.9	-6.2	3.4	0.0	14.6	0.0	0.0		-	99	17	1017	1014
27	9.5	-4.0	2.8	0.0	15.2	0.0	0.0		-	90	25	1019	1016
28	7.1	-4.1	1.5	0.0	16.5	0.0	0.0		-	74	20	1024	1019
29	10.7	-8.1	1.3	0.0	16.7	0.0	0.0		-	96	19	1024	1018
30	11.0	-3.4	3.8	0.0	14.2	0.0	0.5		-	100	25	1019	1014
Total				38.9	421.4	0.0	5.9						
Avg	10.5	-2.6	4.0				44.5	Cumulative ppt					
Extreme	20.5	-11.1					2.4		22	100	17	1024	992
Date	22	3					6		1	6	13	28	14

Spring maintenance: 29 April 2019

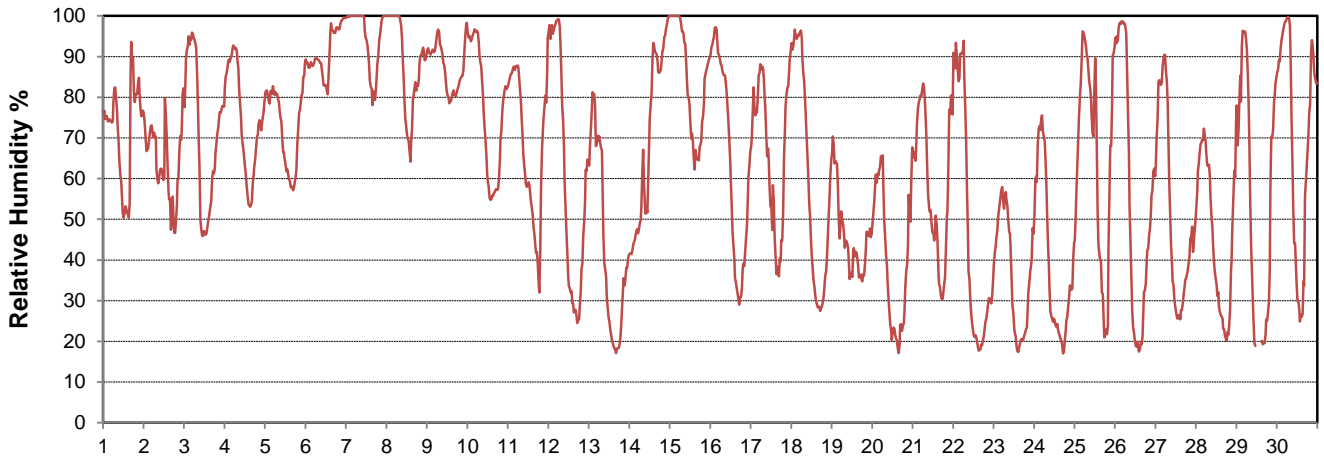
SRC proudly recognizes the following CRS supporters:



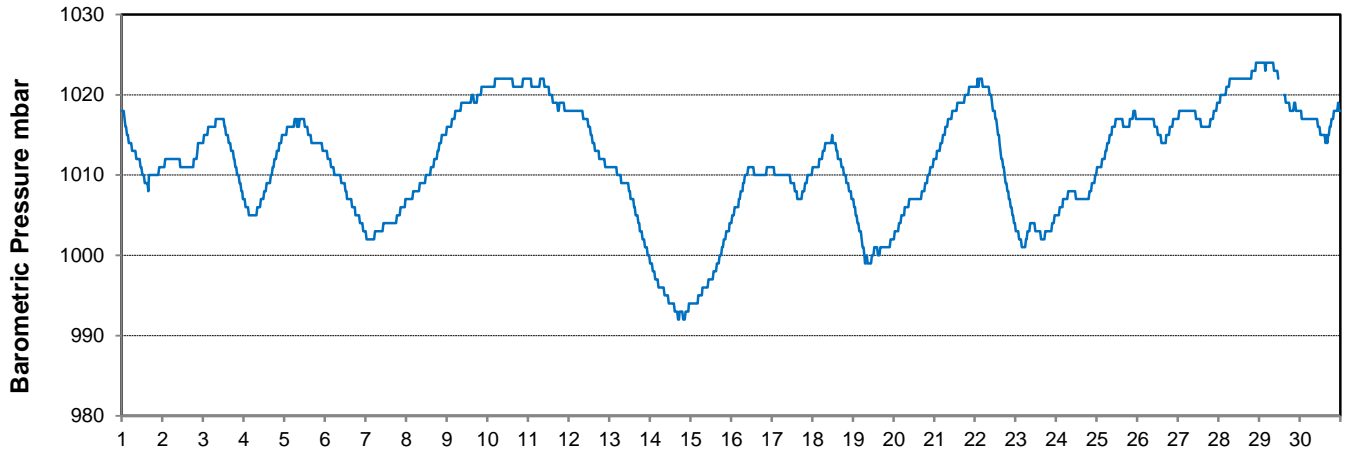
Temperature and Precipitation for April 2019



Relative Humidity for April 2019



Barometric Pressure Corrected to Sea Level for April 2019





SRC CLIMATE REFERENCE STATION DAILY DATA REPORT

CONSERVATION LEARNING CENTRE

Saskatchewan 53.03°N 105.77°W Estab. 2011

Preliminary

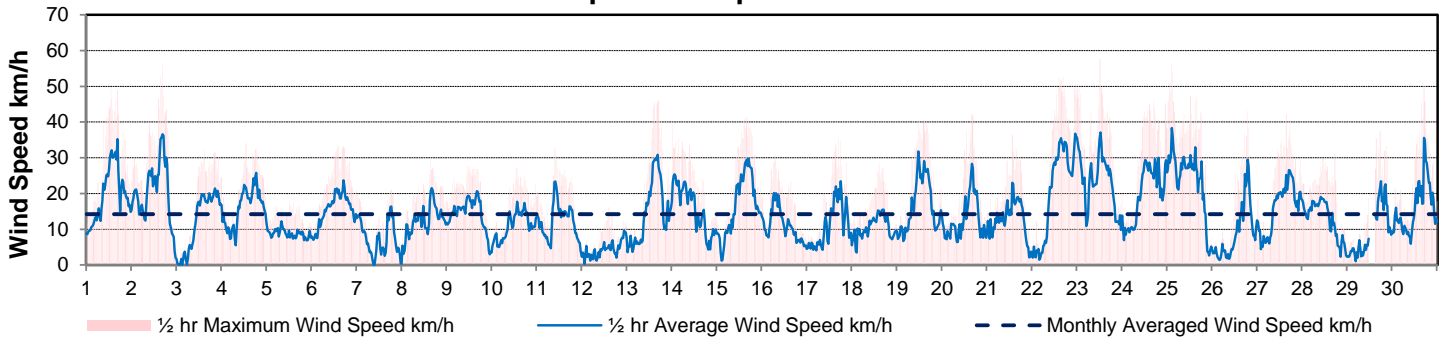
April 2019

Day	Wind Gust			Soil Temperatures at 0900hrs								Radiation				
	Max	Direction	Time	Surface	5 cm	10 cm	20 cm	50 cm	100 cm	150 cm	300 cm	Bright Sunshine	Possible	% Possible	Global	Diffuse
	km/h			°C	°C	°C	°C	°C	°C	°C	°C	hours	hours		MJ/m ²	MJ/m ²
1	49.8	NW	12:56	2.5	0.0	0.0	0.0	0.0	0.5	1.0	3.0	7.4	13.0	56.8	13.3	7.4
2	56.4	NW	16:23	-4.0	0.0	0.0	0.0	0.0	0.5	1.0	3.5	8.7	13.1	66.5	15.7	6.4
3	32.2	ESE	14:56	-4.5	0.0	0.0	0.0	0.0	0.5	1.0	3.5	7.2	13.2	54.8	15.2	7.3
4	34.0	NNE	12:35	0.0	0.0	0.0	0.0	0.0	0.5	1.0	3.5	9.1	13.2	68.8	16.9	5.9
5	17.8	ENE	11:53	-2.0	0.0	0.0	0.0	0.0	0.5	1.0	3.5	9.4	13.3	70.7	18.3	4.7
6	33.8	ESE	13:55	0.5	0.0	0.0	0.0	0.0	0.5	1.0	3.0	0.0	13.4	0.0	3.8	3.5
7	21.0	NE	17:56	0.0	0.0	-0.5	-0.5	0.0	0.5	1.0	3.0	4.4	13.4	32.8	11.6	7.2
8	29.6	ENE	15:25	2.0	-0.5	-0.5	-0.5	0.0	0.0	1.0	2.5	10.2	13.5	75.6	18.4	4.4
9	27.8	E	10:54	-2.0	0.0	0.0	0.0	0.0	0.5	1.0	3.0	1.0	13.6	7.4	11.0	9.4
10	27.4	SE	12:48	-1.0	0.0	0.0	0.0	0.0	0.5	1.0	3.0	12.9	13.6	94.6	23.0	2.8
11	32.8	SSE	9:49	0.5	0.0	0.0	0.0	0.0	0.5	1.0	3.0	13.1	13.7	95.6	21.8	4.6
12	16.1	WNW	14:28	0.0	0.0	0.0	0.0	0.0	0.5	1.0	3.0	12.8	13.8	93.0	22.6	4.8
13	46.1	S	16:59	3.5	0.0	0.0	0.0	0.0	0.5	1.0	3.0	12.8	13.8	92.5	21.5	4.1
14	39.4	S	0:22	6.5	0.0	0.0	0.0	0.0	0.5	1.0	3.0	0.8	13.9	5.8	6.9	5.9
15	41.3	NNW	15:56	3.5	0.0	0.0	0.0	0.0	0.5	1.0	3.0	4.5	14.0	32.2	11.5	7.1
16	30.7	NW	7:02	2.5	0.0	0.0	0.0	0.0	0.5	1.0	3.0	9.3	14.0	66.2	19.1	4.1
17	35.3	SSW	16:52	5.0	0.0	0.0	0.0	0.0	0.5	1.0	3.0	6.0	14.1	42.5	14.2	7.7
18	28.4	W	14:10	7.0	0.5	0.5	0.0	0.0	0.5	1.0	3.0	11.5	14.2	81.1	21.7	4.4
19	40.7	S	14:23	12.0	1.5	1.5	0.5	0.0	0.5	1.0	3.0	8.3	14.2	58.3	18.0	7.6
20	42.3	WNW	15:56	10.0	1.5	1.5	1.0	0.0	0.5	1.0	3.0	10.3	14.3	72.0	17.5	6.0
21	36.4	N	13:27	8.0	1.0	1.0	0.5	0.0	0.5	1.0	3.0	12.2	14.4	84.8	21.3	4.7
22	52.5	S	14:24	10.5	1.0	1.0	1.0	0.0	0.5	1.0	3.0	10.6	14.4	73.4	20.1	7.4
23	57.7	W	12:04	14.0	3.5	3.0	1.5	0.0	0.5	1.0	3.0	13.6	14.5	93.7	22.6	5.3
24	46.2	NNW	16:48	11.0	2.5	2.0	2.0	0.0	0.5	1.0	3.0	11.2	14.6	76.9	22.1	5.1
25	56.0	WNW	2:02	4.5	2.5	2.5	2.0	0.0	0.5	1.0	3.0	7.8	14.6	53.3	16.2	8.2
26	43.2	NNE	18:45	3.0	1.0	1.0	1.0	0.0	0.5	1.0	3.0	13.4	14.7	91.2	24.1	6.7
27	42.2	ENE	15:13	4.0	1.0	1.0	1.0	0.0	0.5	1.0	3.0	12.0	14.8	81.2	23.3	7.5
28	31.2	NE	17:19	1.0	1.0	1.0	1.0	0.0	0.5	1.0	3.0	12.8	14.8	86.3	20.6	10.1
29	37.7	WSW	17:33	3.5	0.5	0.5	1.0	0.0	0.5	1.0	3.0	9.7	14.9	65.1	15.6	3.6
30	50.1	NNW	16:30	3.5	1.0	1.0	1.0	0.5	0.5	1.0	3.0	8.4	15.0	56.1	17.6	8.0
Total												271.4	420.0	64.6	525.5	181.9
Mean				3.5	0.6	0.6	0.4	0.0	0.5	1.0	3.1					
Extreme Date	57.7	W	12:04									*Apr 29 - missing radiation data between noon and 14:30 inclusive				

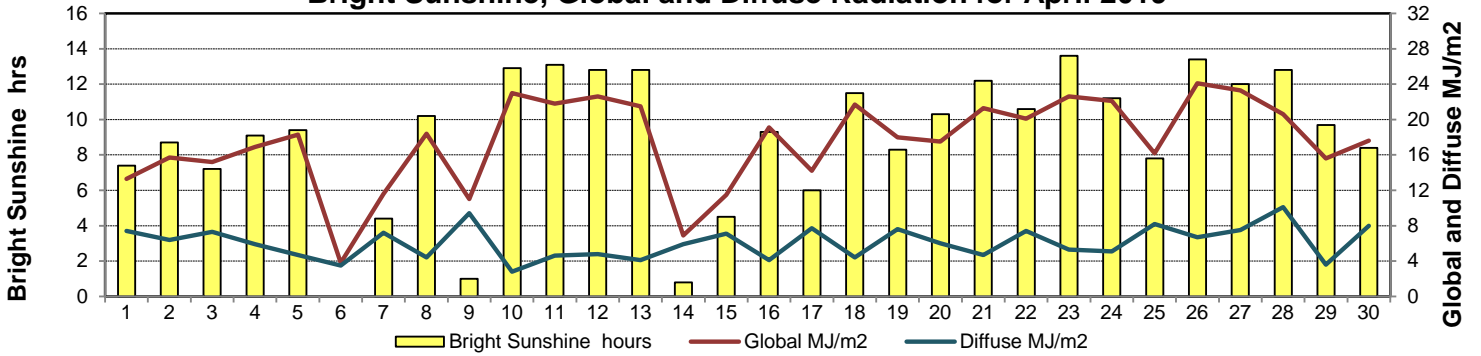
GLOSSARY OF TERMS

Degree-days	Radiation
Tm Mean Temperature	Bright Sunshine is the unobstructed direct radiation from the sun, as opposed to the shading of a location by clouds or by other atmospheric obstructions.
Growing (Tm-5°C); if Tm ≤ 5°C then GDD = 0	
Heating (18°C-Tm); if Tm ≥ 18°C then HDD = 0	
Cooling (Tm-18°C); if Tm ≤ 18°C then CDD = 0	Diffuse is radiation reaching the earth's surface after having been scattered from the direct solar beam
T Trace of Precipitation	Global is the sum of the direct solar and diffuse radiation
SOG Depth of snow-on-the-ground	Relative Humidity The ratio of the air's water vapour content to its water vapour capacity which changes with temperature.
Red Cell no data available	Air Pressure The force exerted by the weight of a column of air above a given point
Red Number manual calculation	Wind Gust The daily highest instantaneous value recorded irrespective of direction and/or duration

Wind Speed for April 2019

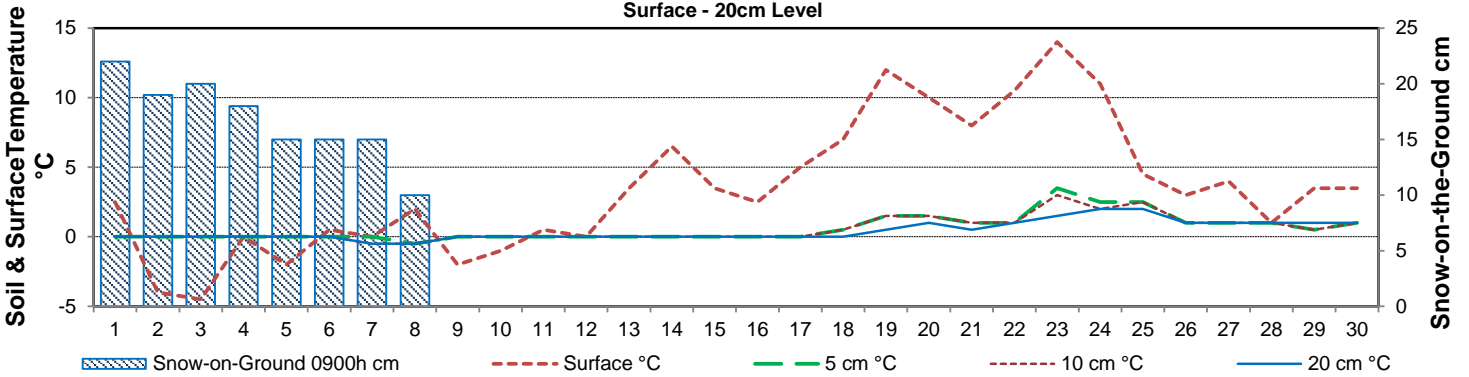


Bright Sunshine, Global and Diffuse Radiation for April 2019



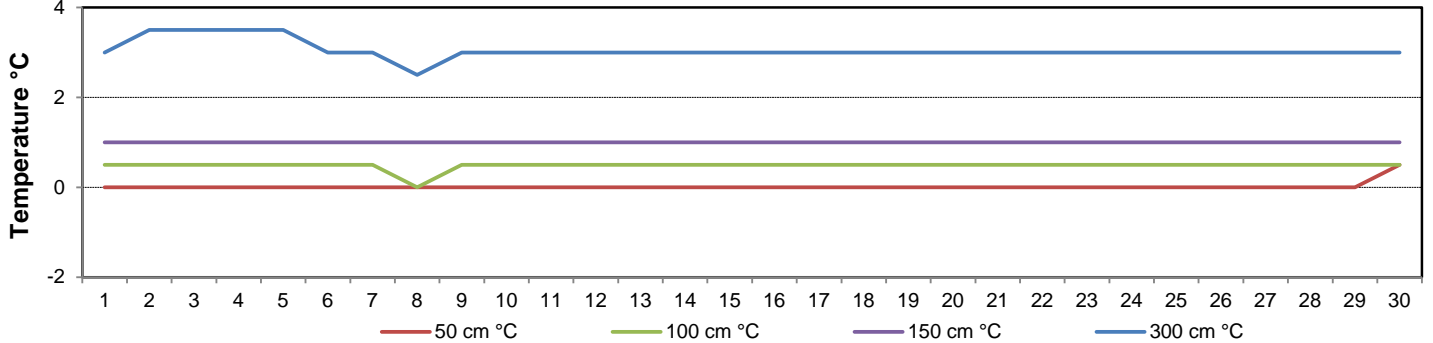
Soil Temperatures for April 2019

Surface - 20cm Level

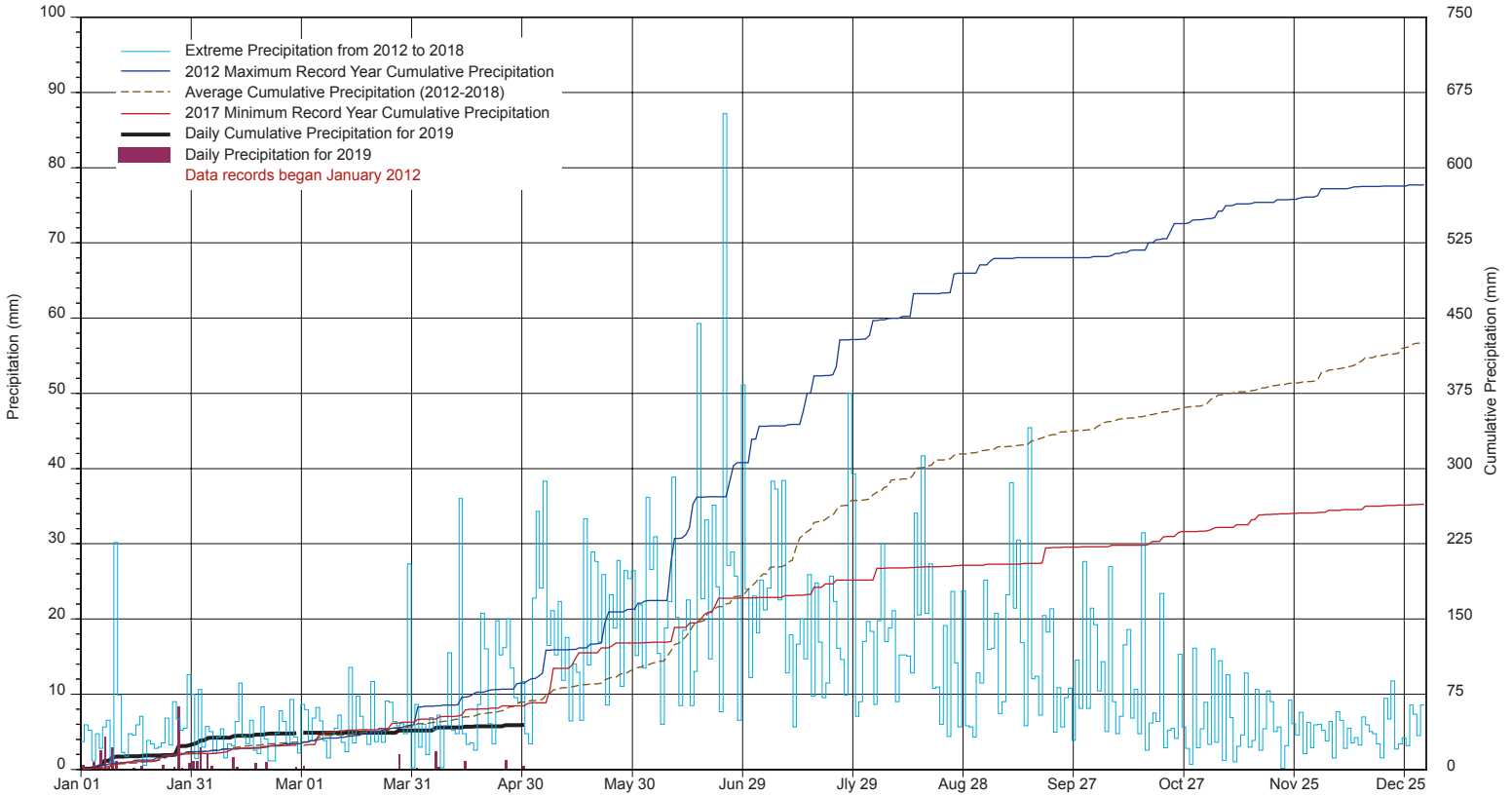


Soil Temperatures for April 2019

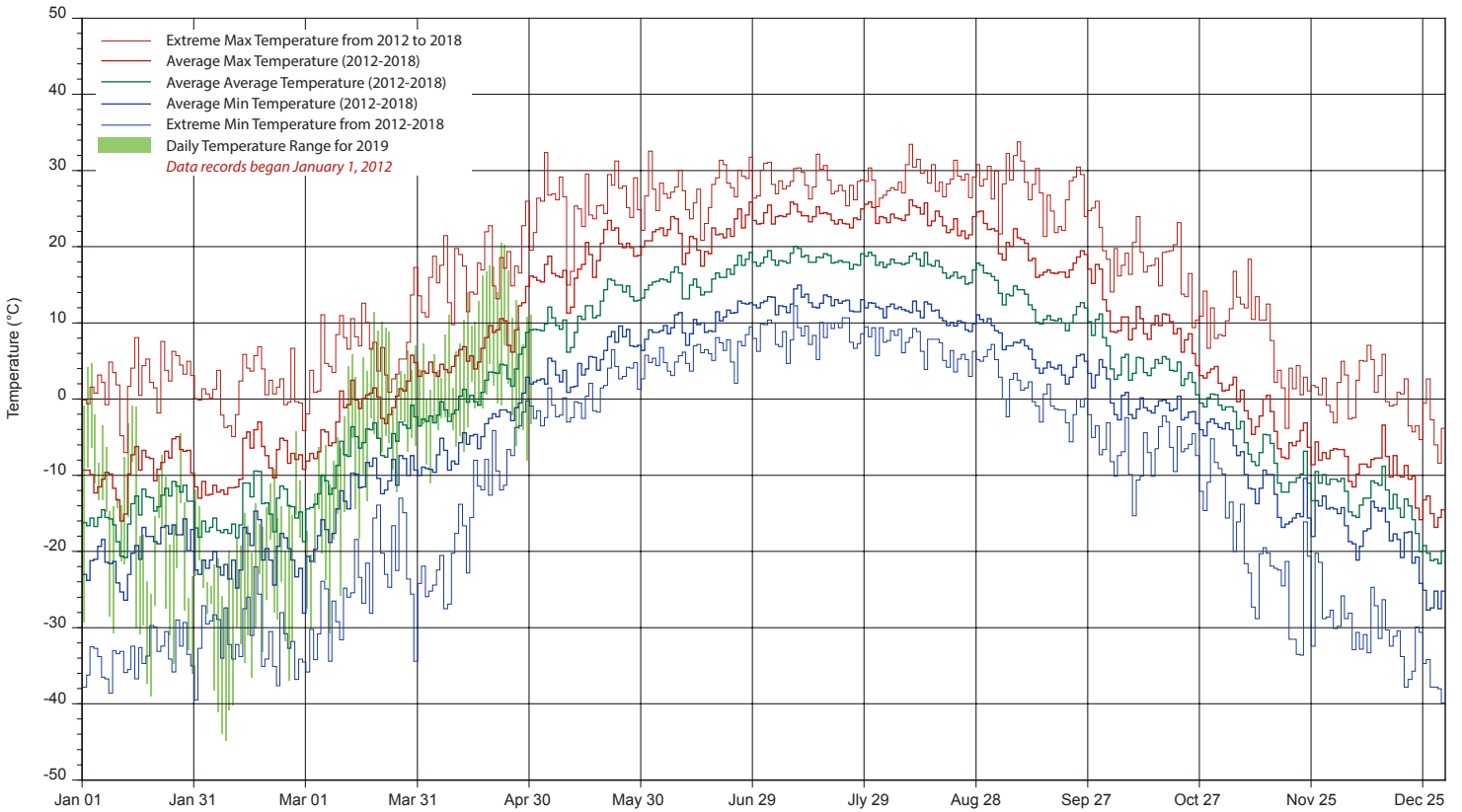
50 - 300cm Level



SRC's CLIMATE REFERENCE STATION at the Conservation Learning Centre 2019 PRECIPITATION AND AVERAGE



2019 TEMPERATURES AND AVERAGES



SRC proudly recognizes the following CRS supporters:



Agriculture and
Agri-Food Canada

Agriculture et
Agroalimentaire Canada



UNIVERSITY OF
SASKATCHEWAN

