



# SRC CLIMATE REFERENCE STATION DAILY DATA REPORT

## CONSERVATION LEARNING CENTRE

Saskatchewan 53.03°N 105.77°W Estab. 2011

Preliminary **August 2014**

Day	Temperature			Degree-days			Precipitation			Relative Humidity		Station Pressure <i>corrected to sea level</i>	
	Max	Min	Mean	Growing	Heating	Cooling	Weighing Gauge	Tipping Bucket	Notes	Max ½ hr Avg	Min ½ hr Avg	Max ½ hr Avg	Min ½ hr Avg
	°C	°C	°C	5°C base	18°C base	18°C base	mm	mm		%	%	mbar	mbar
1	24.2	17.1	20.7	15.7	0.0	2.7	0.0	0.2		92	59	1020	1016
2	25.2	12.9	19.1	14.1	0.0	1.1	0.0	0.0		95	33	1022	1019
3	26.8	13.1	20.0	15.0	0.0	2.0	0.0	0.0		90	53	1020	1016
4	27.4	17.1	22.3	17.3	0.0	4.3	0.0	0.0		95	53	1017	1016
5	27.8	15.3	21.6	16.6	0.0	3.6	0.0	0.0		96	47	1017	1015
6	25.5	16.9	21.2	16.2	0.0	3.2	0.0	0.4		94	55	1015	1009
7	28.5	16.3	22.4	17.4	0.0	4.4	0.0	0.0		95	41	1011	1009
8	25.9	13.8	19.9	14.9	0.0	1.9	0.7	2.6		88	39	1014	1009
9	20.4	11.8	16.1	11.1	1.9	0.0	2.9	0.6		94	53	1019	1009
10	23.3	9.6	16.5	11.5	1.5	0.0	0.0	0.0		95	49	1021	1019
11	27.9	13.9	20.9	15.9	0.0	2.9	0.0	0.0		93	41	1021	1016
12	29.5	13.1	21.3	16.3	0.0	3.3	0.0	0.0		96	38	1018	1015
13	26.2	14.9	20.6	15.6	0.0	2.6	0.0	0.0		91	58	1016	1011
14	30.1	16.2	23.2	18.2	0.0	5.2	0.0	0.0		95	49	1011	1009
15	25.8	16.5	21.2	16.2	0.0	3.2	0.0	0.0		94	49	1014	1011
16	24.7	14.0	19.4	14.4	0.0	1.4	0.0	0.0		95	48	1014	1011
17	24.5	17.5	21.0	16.0	0.0	3.0	1.5	2.6		94	62	1011	1008
18	28.5	15.5	22.0	17.0	0.0	4.0	0.0	0.0		94	35	1009	1004
19	26.3	15.0	20.7	15.7	0.0	2.7	9.6	10.6		94	55	1004	1002
20	20.0	14.8	17.4	12.4	0.6	0.0	36.1	35.4		95	80	1011	1002
21	18.4	12.3	15.4	10.4	2.6	0.0	0.0	0.4		94	70	1020	1011
22	18.7	11.2	15.0	10.0	3.0	0.0	0.0	0.0		90	52	1025	1020
23	15.8	11.4	13.6	8.6	4.4	0.0	0.0	0.0		91	63	1026	1022
24	13.6	10.1	11.9	6.9	6.1	0.0	0.0	0.0		81	55	1021	1015
25	17.3	5.4	11.4	6.4	6.6	0.0	0.0	0.0		91	42	1017	1015
26	23.6	5.4	14.5	9.5	3.5	0.0	0.0	0.0		93	40	1016	1012
27	27.5	11.9	19.7	14.7	0.0	1.7	0.0	0.0		94	44	1011	1009
28	22.3	12.3	17.3	12.3	0.7	0.0	0.0	0.4		95	53	1013	1008
29	22.3	12.3	17.3	12.3	0.7	0.0	0.0	0.2		91	40	1016	1010
30	19.5	6.2	12.9	7.9	5.1	0.0	6.8	7.6		95	68	1010	1001
31	19.5	10.5	15.0	10.0	3.0	0.0	0.0	8.6		96	45	1004	1002
<b>Total</b>				416.5	39.7	53.2	57.6	69.6					
<b>Avg</b>	<b>23.8</b>	<b>13.0</b>	<b>18.4</b>				394.2	Cumulative ppt 2014					
<b>Extreme</b>	30.1	5.4					36.1	35.4		96	33	1026	1001
<b>Date</b>	14	25					20	20		5	2	23	30
<b>Site Extreme</b>	31.4	6.1						65.6					
<b>Date</b>	22/2011	08/2013						2012					

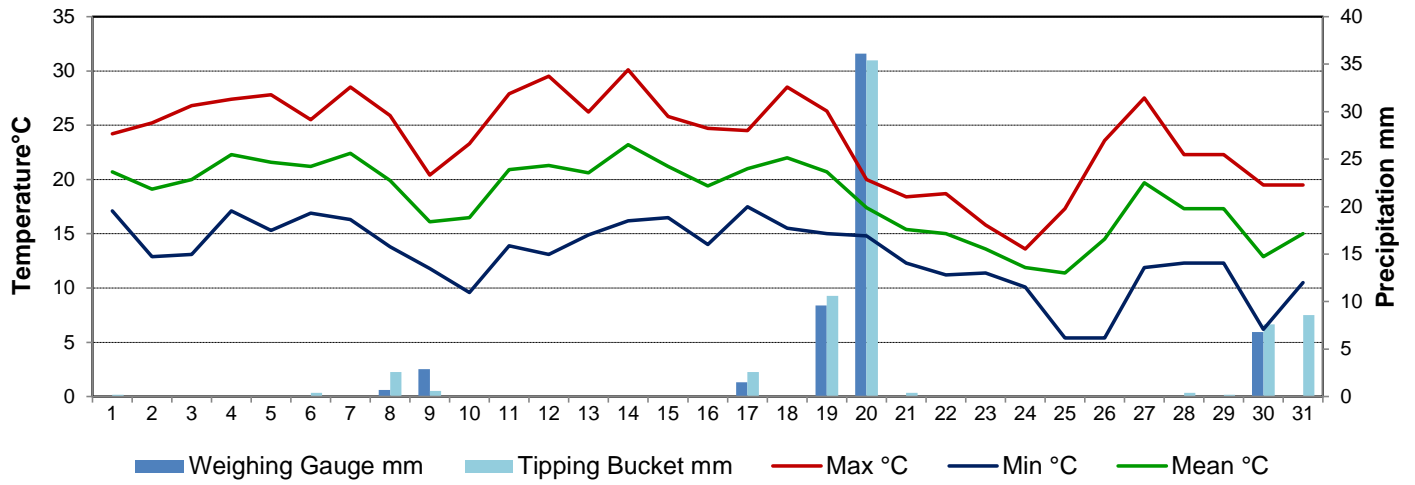


**Agriculture and Agri-Food Canada**

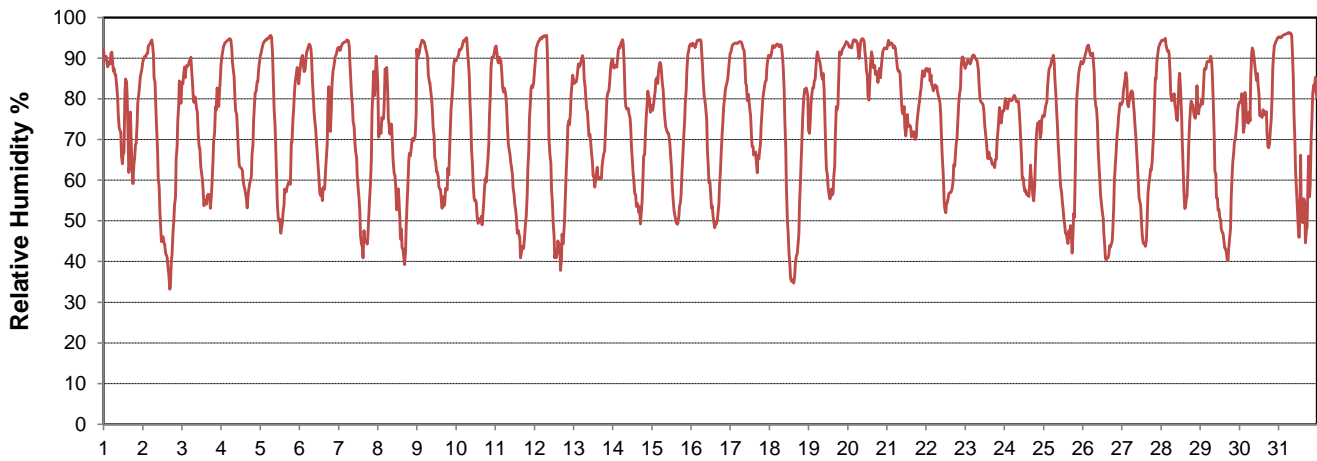
**Agriculture et Agroalimentaire Canada**



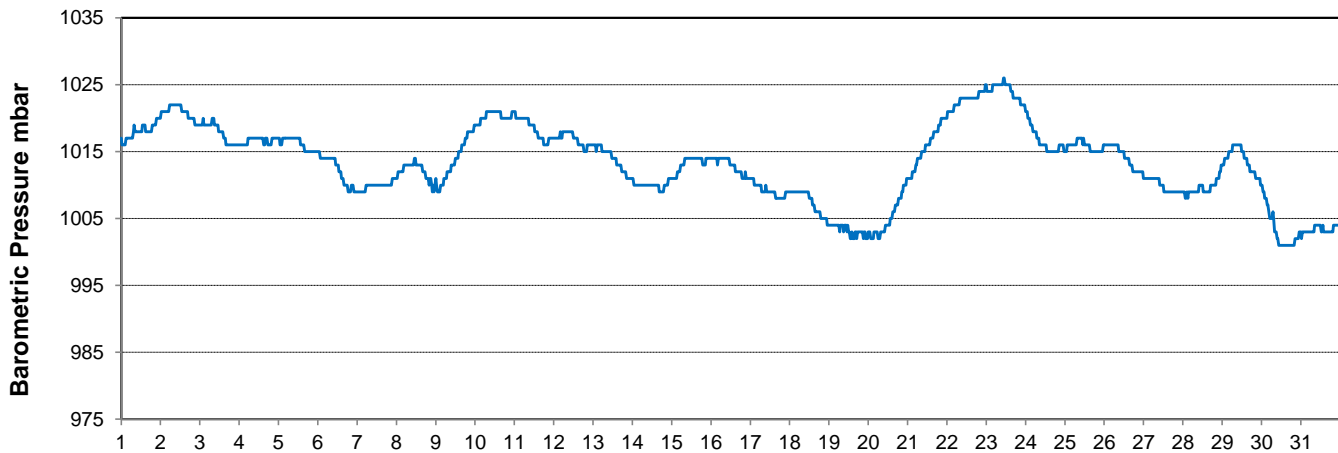
### Temperature and Precipitation for August 2014



### Relative Humidity for August 2014



### Barometric Pressure Corrected to Sea Level for August 2014





# SRC CLIMATE REFERENCE STATION DAILY DATA REPORT

## CONSERVATION LEARNING CENTRE

Saskatchewan 53.03°N 105.77°W Estab. 2011

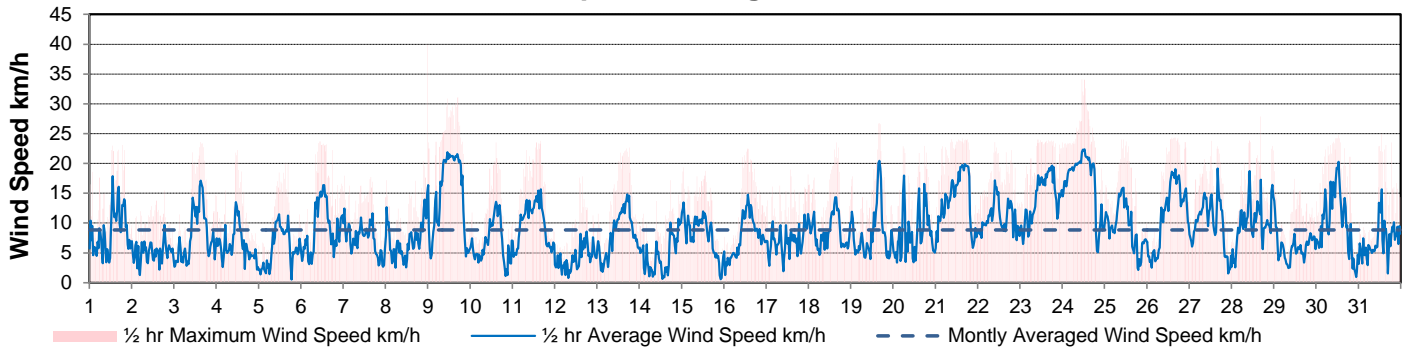
Preliminary **August 2014**

Day	Wind Gust			Soil Temperatures at 0900hrs								Soil Moisture 30 cm	Radiation		
	Max km/h	Direction	Time	Surface °C	5 cm °C	10 cm °C	20 cm °C	50 cm °C	100 cm °C	150 cm °C	300 cm °C	0900hrs %	Bright Sunshine hours	Global MJ/m <sup>2</sup>	Diffuse MJ/m <sup>2</sup>
1	23.1	N	18:35	20.0	19.5	19.5	19.0	16.5	13.5	10.5	6.0	41	6.8	14.9	9.1
2	15.5	S	18:39	17.5	18.0	18.0	18.0	16.5	13.0	10.5	5.5	41	13.8	24.8	7.3
3	23.6	S	15:10	17.5	18.0	18.0	18.5	16.5	13.5	11.0	6.0	40	9.5	19.7	10.7
4	22.2	ENE	12:15	20.0	19.0	19.0	18.5	16.5	13.5	11.0	6.0	40	11.6	21.4	7.3
5	20.1	SSE	15:12	20.0	19.0	19.0	19.0	17.0	14.0	11.0	6.0	40	10.8	21.3	7.1
6	23.7	S	10:47	21.0	19.5	19.0	19.0	17.0	14.0	11.0	6.0	39	9.5	20.4	7.3
7	17.9	SW	0:39	21.0	19.0	18.5	18.5	16.5	13.5	11.0	5.5	39	13.4	20.8	9.5
8	39.9	WSW	23:51	17.5	19.0	19.0	19.0	17.5	14.0	11.5	6.5	39	9.1	18.4	10.7
9	31.1	NW	17:01	17.0	17.5	17.5	17.0	15.5	12.5	10.0	4.5	39	8.4	17.7	11.1
10	23.5	WNW	14:39	15.5	16.5	16.5	17.5	17.0	14.5	11.5	6.5	38	7.9	18.1	11.4
11	23.8	WNW	16:03	19.0	17.5	17.0	17.5	16.5	14.0	11.5	6.0	38	12.6	22.0	7.0
12	17.9	SE	15:33	18.5	17.5	18.0	18.0	17.0	14.5	12.0	6.5	38	11.6	22.8	7.4
13	22.7	SE	18:12	20.0	18.5	18.5	18.5	17.0	14.5	12.0	6.5	38	11.1	17.4	11.2
14	17.2	NW	17:41	19.5	19.0	18.5	18.5	17.0	14.5	12.0	7.0	37	13.2	20.9	6.7
15	19.3	NNW	1:17	19.0	19.5	19.5	19.0	17.0	14.5	12.0	6.5	37	11.2	16.6	8.5
16	22.5	ESE	13:12	17.5	18.5	18.5	18.5	17.0	14.5	12.0	7.0	36	10.4	16.9	9.5
17	19.0	NNW	13:54	18.5	19.0	19.0	18.5	17.0	14.5	12.0	6.5	36	4.6	14.0	10.0
18	23.5	WSW	15:30	17.5	18.5	18.5	18.5	16.5	14.0	12.0	6.5	36	11.3	19.4	7.6
19	26.7	NW	16:12	17.5	19.0	19.0	19.0	17.5	14.5	12.0	7.0	35	5.8	14.5	6.0
20	22.9	N	17:43	16.5	18.0	18.0	17.5	16.0	14.0	11.5	5.5	46	1.5	7.2	6.3
21	24.2	N	15:24	15.5	14.5	14.0	14.0	13.0	11.5	9.5	2.5	43	6.4	13.7	9.7
22	23.6	N	9:37	13.0	13.0	12.5	12.5	13.0	11.5	9.0	1.5	42	4.7	14.0	9.7
23	24.0	ENE	10:06	14.0	13.5	12.5	12.5	12.5	11.5	9.0	1.5	41	1.9	10.6	9.2
24	34.1	NE	11:13	11.0	12.5	11.0	12.0	12.5	11.5	9.5	2.0	41	0.0	5.6	5.0
25	24.0	N	9:54	9.5	12.5	12.0	13.5	13.5	12.5	11.0	4.5	40	11.7	19.5	6.5
26	24.3	SW	14:15	11.5	12.5	13.0	13.5	13.5	13.0	11.0	5.0	40	12.2	17.3	9.0
27	23.8	SW	12:41	16.5	14.5	14.5	15.0	15.0	14.0	12.0	7.0	39	8.5	15.5	6.8
28	27.9	NW	16:41	15.5	15.5	15.5	16.0	15.5	14.5	12.5	7.5	39	2.5	10.1	6.2
29	27.9	NW	16:41	10.5	14.5	14.5	15.5	15.0	14.0	12.5	7.5	39	2.5	21.4	4.8
30	18.7	NNE	0:12	12.0	14.5	15.0	15.0	14.5	13.5	12.0	7.0	39	11.9	7.8	6.4
31	24.8	S	12:17	11.5	13.0	13.0	13.5	13.5	13.0	11.5	5.5	39	3.6	24.2	11.5
Total													260.0	528.9	256.5
Mean				16.5	16.8	16.6	16.8	15.7	13.5	11.2	5.6	39.2			
Extreme	39.9	WSW	23:51												
Date	8														
Site Extreme															

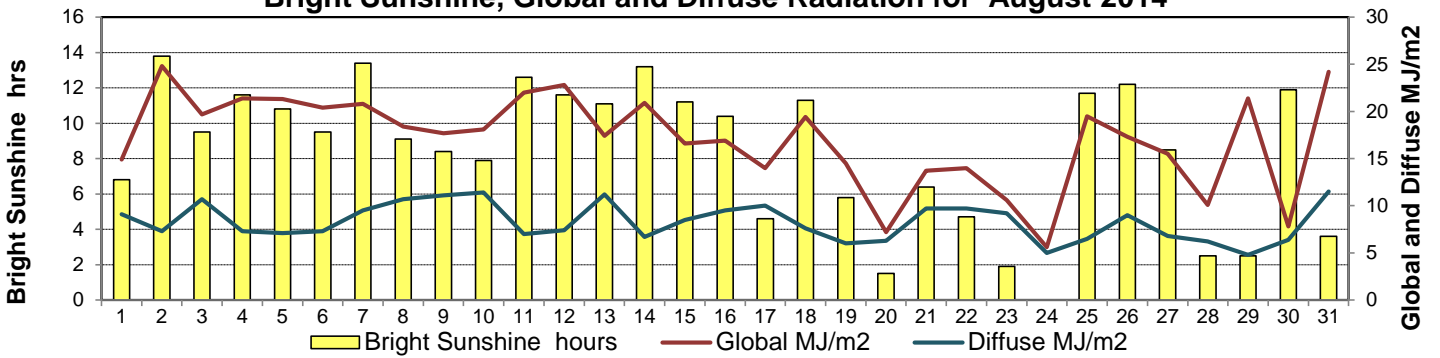
### GLOSSARY OF TERMS

Tm Mean Temperature	Bright Sunshine is the unobstructed direct radiation from the sun, as opposed to the shading of a location by clouds or by other atmospheric obstructions.
Growing (Tm-5°C); if Tm ≤ 5°C then GDD = 0	
Heating (18°C-Tm); if Tm ≥ 18°C then HDD = 0	Diffuse is radiation reaching the earth's surface after having been scattered from the direct solar beam
Cooling (Tm-18°C); if Tm ≤ 18°C then CDD = 0	Global is the sum of the direct solar and diffuse radiation
T Trace of Precipitation	Relative Humidity The ratio of the air's water vapour content to its water vapour capacity which changes with temperature.
SOG Depth of snow-on-the-ground	
Red Cell no data available	Air Pressure The force exerted by the weight of a column of air above a given point
Red Number manual calculation	Wind Gust The daily highest instantaneous value recorded irrespective of direction and/or duration

### Wind Speed for August 2014

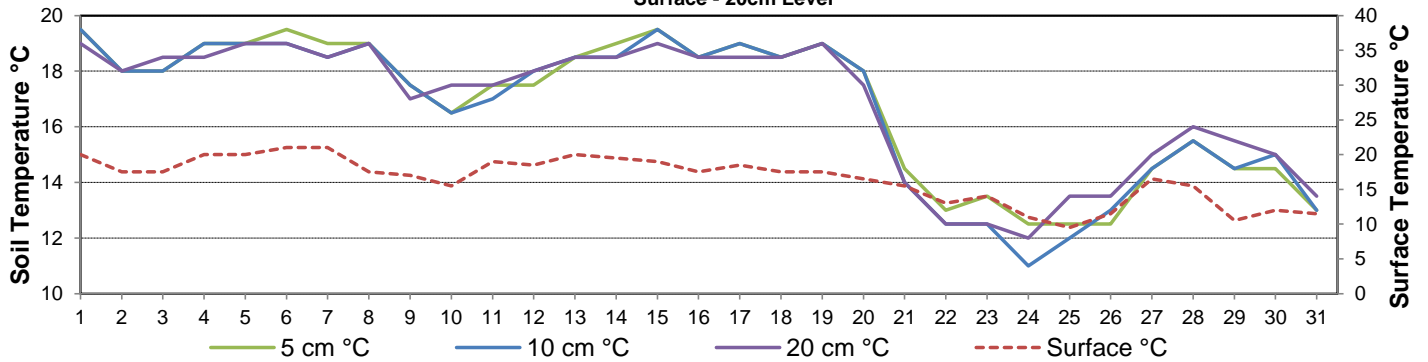


### Bright Sunshine, Global and Diffuse Radiation for August 2014



### Soil Temperatures for August 2014

Surface - 20cm Level



### Soil Temperatures for August 2014

50 - 300cm Level

