



# SRC CLIMATE REFERENCE STATION DAILY DATA REPORT

## CONSERVATION LEARNING CENTRE

Saskatchewan 53.03°N 105.77°W Estab. 2011

Preliminary **August 2019**

Day	Temperature			Degree-days			Precipitation			Relative Humidity		Station Pressure <i>corrected to sea level</i>	
	Max	Min	Mean	Growing	Heating	Cooling	Weighing Gauge	Tipping Bucket	Notes	Max ½ hr Avg	Min ½ hr Avg	Max ½ hr Avg	Min ½ hr Avg
	°C	°C	°C	5°C base	18°C base	18°C base	mm	mm		%	%	mbar	mbar
1	27.4	10.8	19.1	14.1	0.0	1.1	1.7	2.0		100	57	1017	1012
2	30.1	16.4	23.3	18.3	0.0	5.3	0.0	0.0		96	56	1014	1009
3	28.3	16.4	22.4	17.4	0.0	4.4	0.5	0.6		95	56	1012	1006
4	24.5	12.6	18.6	13.6	0.0	0.6	0.0	0.0		94	44	1014	1011
5	27.3	12.5	19.9	14.9	0.0	1.9	0.9	0.6		97	46	1013	1008
6	19.5	7.1	13.3	8.3	4.7	0.0	0.0	0.4		98	54	1014	1008
7	19.7	5.5	12.6	7.6	5.4	0.0	0.0	0.0		98	46	1015	1013
8	23.5	2.9	13.2	8.2	4.8	0.0	0.0	0.0		100	41	1015	1012
9	24.3	9.1	16.7	11.7	1.3	0.0	1.2	1.4		95	62	1015	1009
10	19.0	6.0	12.5	7.5	5.5	0.0	0.0	0.0		99	46	1019	1015
11	21.3	1.4	11.4	6.4	6.6	0.0	0.0	0.0		100	42	1020	1016
12	22.0	7.3	14.7	9.7	3.3	0.0	0.0	0.0		100	43	1018	1015
13	24.6	6.5	15.6	10.6	2.4	0.0	0.0	0.0		100	39	1020	1017
14	22.9	9.8	16.4	11.4	1.6	0.0	0.0	0.0		98	46	1017	1011
15	25.0	8.4	16.7	11.7	1.3	0.0	0.2	0.0		99	43	1011	1006
16	21.5	10.8	16.2	11.2	1.8	0.0	2.8	3.0		100	56	1006	1001
17	14.4	8.9	11.7	6.7	6.3	0.0	0.0	0.0		79	60	1003	1002
18	18.2	4.4	11.3	6.3	6.7	0.0	0.0	0.0		94	48	1007	1003
19	18.0	4.6	11.3	6.3	6.7	0.0	0.5	0.4		99	53	1016	1007
20	21.1	4.8	13.0	8.0	5.0	0.0	0.0	0.2		100	44	1021	1016
21	22.8	2.0	12.4	7.4	5.6	0.0	0.1	0.0		100	39	1021	1014
22	27.4	9.4	18.4	13.4	0.0	0.4	6.1	5.8		97	44	1014	1008
23	21.6	6.8	14.2	9.2	3.8	0.0	0.0	0.2		100	54	1016	1009
24	24.3	12.9	18.6	13.6	0.0	0.6	0.0	0.0		100	68	1009	1002
25	23.8	9.8	16.8	11.8	1.2	0.0	0.6	0.6		100	45	1007	1003
26	18.3	10.0	14.2	9.2	3.8	0.0	1.6	1.2		96	69	1010	1007
27	19.7	7.3	13.5	8.5	4.5	0.0	0.0	0.4		99	52	1015	1010
28	23.2	6.5	14.9	9.9	3.1	0.0	0.2	0.0		100	33	1011	1003
29	18.9	7.0	13.0	8.0	5.0	0.0	0.0	0.0		98	47	1019	1011
30	19.9	2.0	11.0	6.0	7.0	0.0	0.2	0.0		100	42	1020	1019
31	21.6	2.7	12.2	7.2	5.8	0.0	0.0	0.0		100	43	1019	1016
Total				314.1	103.2	14.3	16.6	16.8					
Avg	<b>22.4</b>	<b>7.8</b>	<b>15.1</b>				209.2	Cumulative ppt					
Extreme	30.1	1.4					6.1	5.8		100	33	1021	1001
Date	2	11					22	22		1	28	20	16

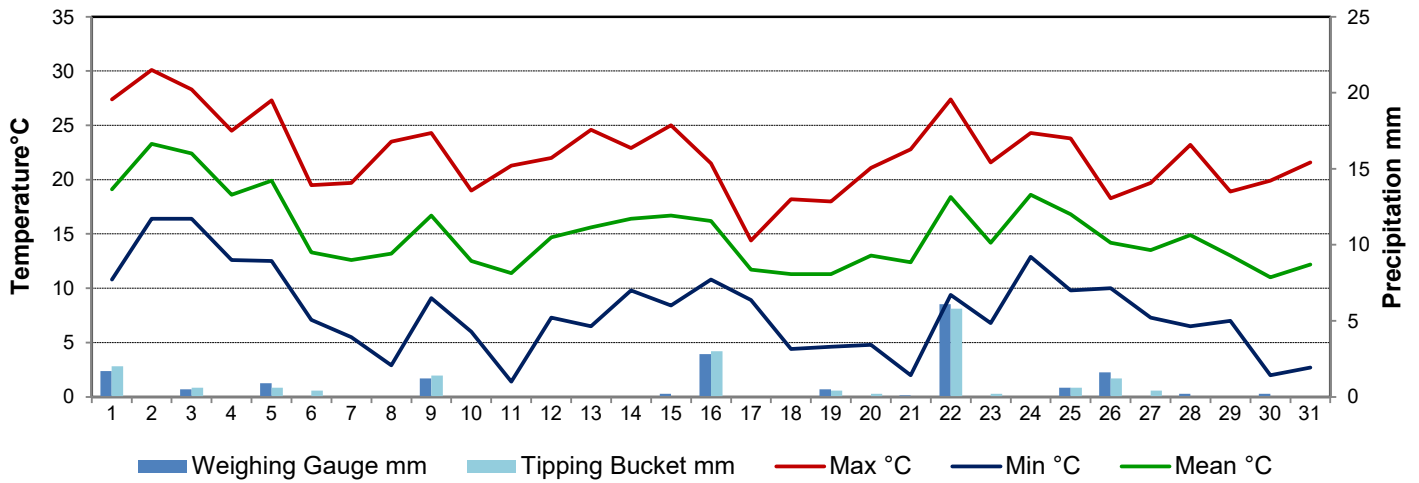
Data logger error Aug 1 @ 13:30, Aug 6 @ 12:30

updated data logger program Aug 7 2019, Aug 8 219

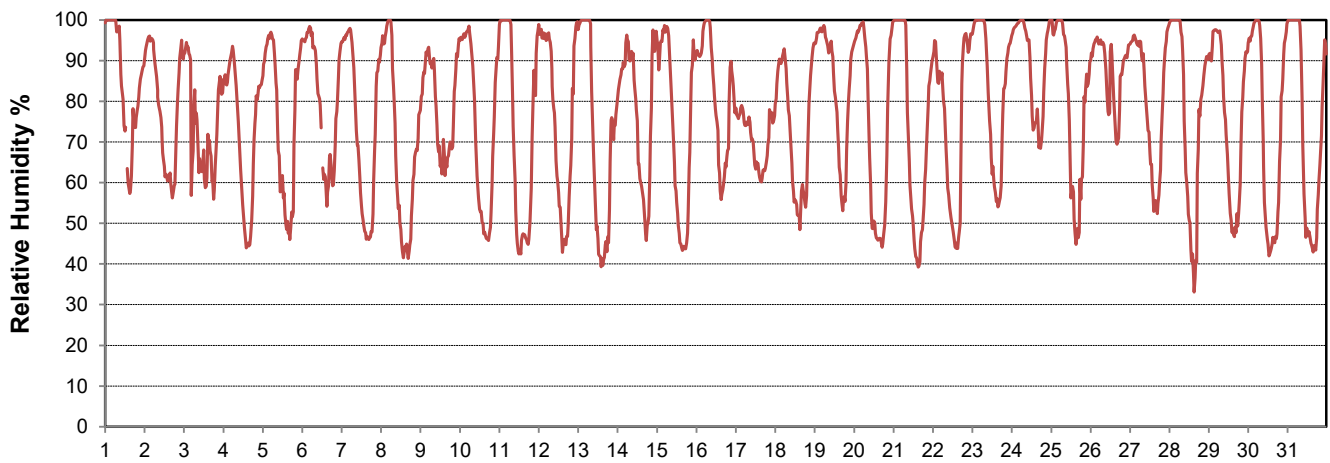
**SRC proudly recognizes the following CRS supporters:**



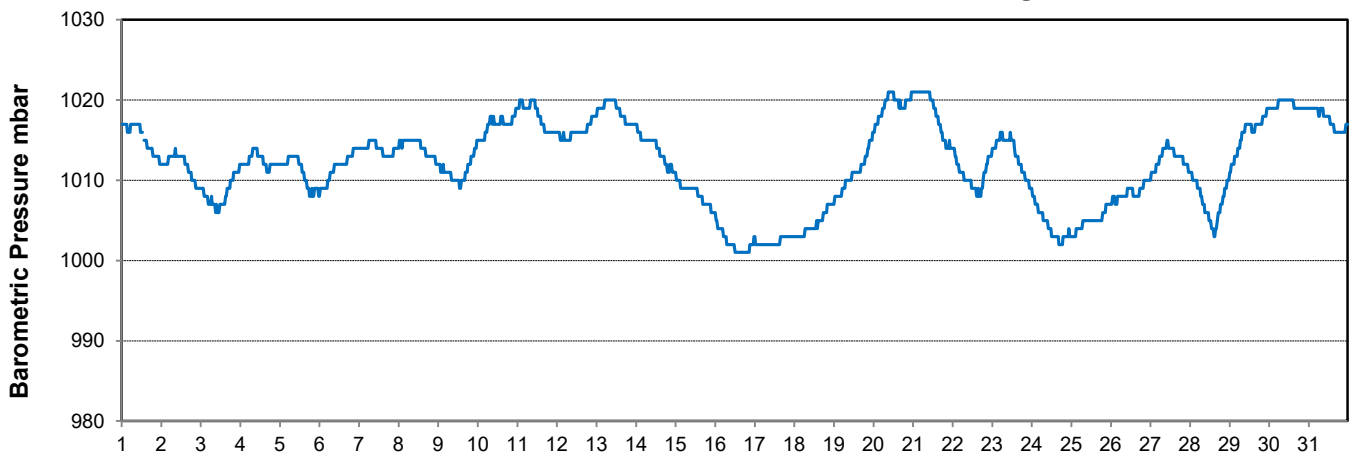
### Temperature and Precipitation for August 2019



### Relative Humidity for August 2019



### Barometric Pressure Corrected to Sea Level for August 2019





# SRC CLIMATE REFERENCE STATION DAILY DATA REPORT

## CONSERVATION LEARNING CENTRE

Saskatchewan 53.03°N 105.77°W Estab. 2011

Preliminary

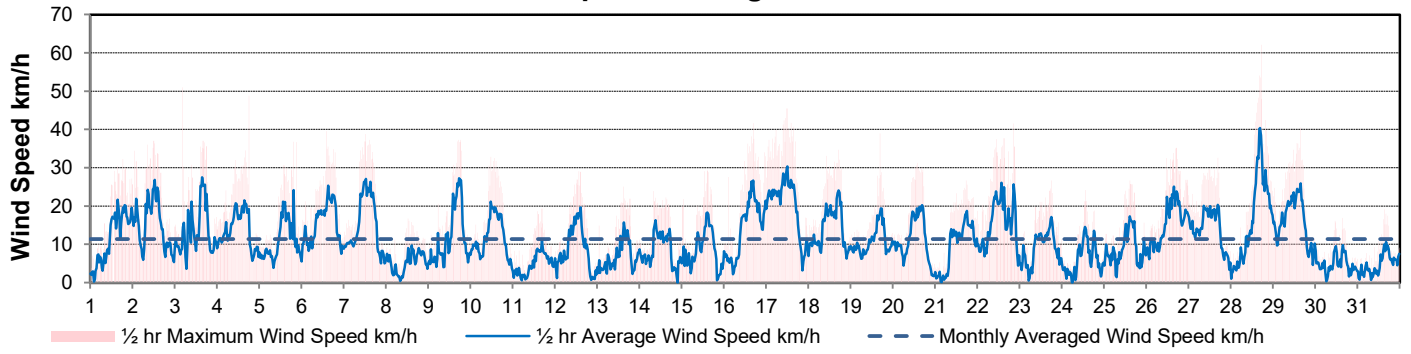
August 2019

Day	Wind Gust			Soil Temperatures at 0900hrs								Radiation				
	Max	Direction	Time	Surface	5 cm	10 cm	20 cm	50 cm	100 cm	150 cm	300 cm	Bright Sunshine	Possible	% Possible	Global	Diffuse
	km/h			°C	°C	°C	°C	°C	°C	°C	°C	hours	hours		MJ/m <sup>2</sup>	MJ/m <sup>2</sup>
1	32.3	E	18:40	16.0	17.0	17.5	17.0	15.5	13.0	10.5	5.5	10.8	15.6	69.2	18.8	7.3
2	37.0	S	12:09	21.5	18.0	18.0	17.5	15.5	12.5	10.0	5.5	13.6	15.6	87.4	24.5	4.7
3	51.0	SSE	4:38	23.5	19.0	19.5	18.0	16.0	13.0	10.5	5.5	10.4	15.5	67.1	19.0	9.0
4	48.8	NW	18:11	16.5	17.5	18.0	18.0	16.0	13.0	10.5	5.5	11.6	15.4	75.1	23.0	6.9
5	36.8	NW	19:44	18.5	17.5	18.0	17.5	16.0	13.0	10.5	6.0	8.8	15.4	57.2	19.1	7.5
6	39.5	N	14:29	15.5	18.0	18.5	18.0	16.0	13.5	10.5	6.0	6.3	15.3	41.1	13.2	8.5
7	38.8	WNW	12:45	12.0	15.0	16.0	16.5	16.0	13.5	10.5	6.0	13.9	15.3	91.1	24.6	5.5
8	16.7	NNW	12:34	13.0	14.0	15.0	16.0	15.5	13.5	11.0	6.0	7.1	15.2	46.7	23.9	4.8
9	37.3	NW	18:26	14.0	16.0	16.5	16.0	15.5	13.5	11.0	6.0	9.8	15.1	64.7	19.2	7.3
10	32.9	NW	11:58	13.0	15.0	15.5	16.0	15.5	13.5	11.0	6.0	14.1	15.1	93.5	23.9	4.8
11	19.3	ENE	16:35	11.5	13.5	14.5	15.5	15.0	13.0	11.0	6.0	14.0	15.0	93.2	23.4	4.7
12	29.1	E	13:32	14.5	14.5	15.0	15.5	15.0	13.0	11.0	6.5	9.9	15.0	66.2	19.8	8.4
13	25.0	SW	15:17	15.0	14.5	15.0	15.5	15.0	13.0	11.0	6.5	9.4	14.9	63.1	19.8	7.6
14	23.9	NW	8:27	14.5	15.5	15.5	15.5	15.0	13.0	11.0	6.5	8.5	14.8	57.3	15.9	7.8
15	29.3	NNW	14:47	16.0	15.0	15.0	15.5	15.0	13.0	11.0	6.5	10.2	14.8	69.1	21.5	5.3
16	41.6	W	16:37	16.0	16.0	16.0	15.5	15.0	13.0	11.0	6.5	5.3	14.7	36.0	13.1	8.9
17	45.4	W	11:56	11.0	14.0	14.5	15.5	14.5	13.0	11.0	6.5	1.5	14.7	10.2	10.4	8.5
18	34.7	NW	17:29	10.5	12.5	13.5	14.5	14.5	13.0	11.0	6.5	13.1	14.6	89.8	21.1	7.8
19	38.9	WNW	16:51	10.0	12.5	13.0	14.0	14.0	13.0	11.0	6.5	5.6	14.5	38.6	10.1	5.9
20	31.2	NW	14:22	12.0	12.0	12.5	13.5	14.0	13.0	11.0	6.5	13.7	14.5	94.8	22.3	3.8
21	26.6	ESE	17:48	12.0	12.0	12.5	13.5	13.5	12.5	11.0	7.0	12.6	14.4	87.6	21.5	5.5
22	41.5	NNW	20:43	16.5	13.5	13.5	14.0	13.5	12.5	11.0	7.0	9.0	14.3	62.8	17.3	4.7
23	26.7	ESE	18:15	12.5	13.5	14.0	14.5	13.5	12.5	11.0	7.0	11.1	14.3	77.8	21.8	3.8
24	24.1	E	13:51	17.0	16.0	16.0	15.0	14.0	12.5	11.0	7.0	5.4	14.2	38.1	11.9	7.2
25	26.6	N	14:39	14.0	14.5	15.0	15.0	14.0	12.5	11.0	7.0	8.8	14.1	62.3	16.4	7.6
26	35.2	NW	17:20	13.0	14.5	14.5	15.0	14.0	12.5	11.0	7.0	3.2	14.1	22.8	10.7	8.2
27	32.6	NW	16:58	12.0	14.5	14.5	14.5	14.0	12.5	11.0	6.5	7.4	14.0	52.9	15.3	7.8
28	62.1	WNW	17:10	12.5	13.0	13.5	14.5	14.0	12.5	11.0	7.0	9.6	13.9	68.9	16.8	5.3
29	40.5	NW	15:33	11.5	13.0	13.5	14.0	14.0	12.5	11.0	7.0	10.8	13.9	77.9	18.4	5.0
30	16.9	WSW	15:45	10.5	11.5	12.0	13.5	13.5	12.5	11.0	7.0	7.4	13.8	53.7	15.0	7.6
31	19.1	SW	15:28	10.5	11.5	12.0	13.5	13.5	12.5	11.0	7.0	8.1	13.7	59.0	14.4	8.2
Total												291.0	455.5	63.9	566.1	205.9
Mean				14.1	14.7	15.1	15.4	14.7	12.9	10.9	6.4					
Extreme	62.1	WNW	17:10													
Date	28															

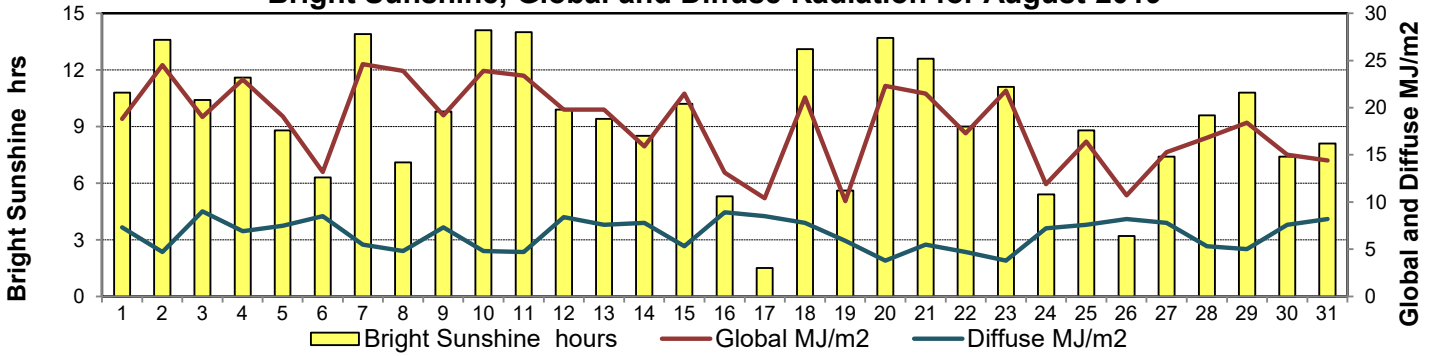
### GLOSSARY OF TERMS

<b>Degree-days</b>	<b>Radiation</b>
Tm Mean Temperature	Bright Sunshine is the unobstructed direct radiation from the sun, as opposed to the shading of a location by clouds or by other atmospheric obstructions.
Growing (Tm-5°C); if Tm ≤ 5°C then GDD = 0	
Heating (18°C-Tm); if Tm ≥ 18°C then HDD = 0	Diffuse is radiation reaching the earth's surface after having been scattered from the direct solar beam
Cooling (Tm-18°C); if Tm ≤ 18°C then CDD = 0	Global is the sum of the direct solar and diffuse radiation
T Trace of Precipitation	<b>Relative Humidity</b> The ratio of the air's water vapour content of its water vapour capacity which changes with temperature.
SOG Depth of snow-on-the-ground	
Red Cell no data available	<b>Air Pressure</b> The force exerted by the weight of a column of air above a given point
Red Number manual calculation	<b>Wind Gust</b> The daily highest instantaneous value recorded irrespective of direction and/or duration

### Wind Speed for August 2019

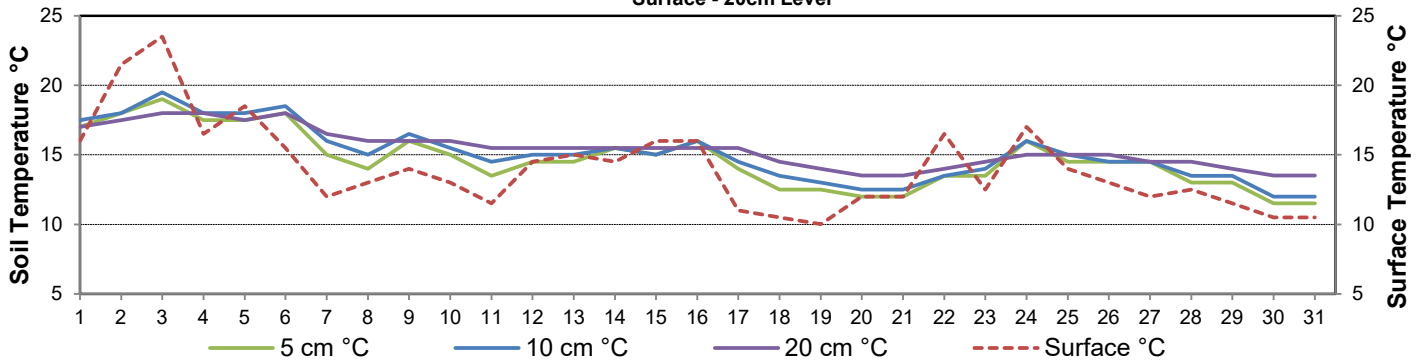


### Bright Sunshine, Global and Diffuse Radiation for August 2019



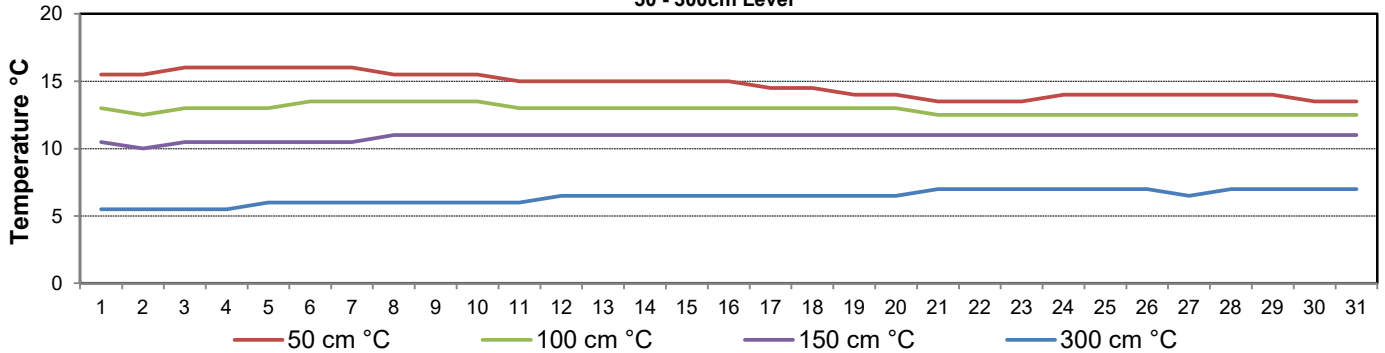
### Soil Temperatures for August 2019

Surface - 20cm Level

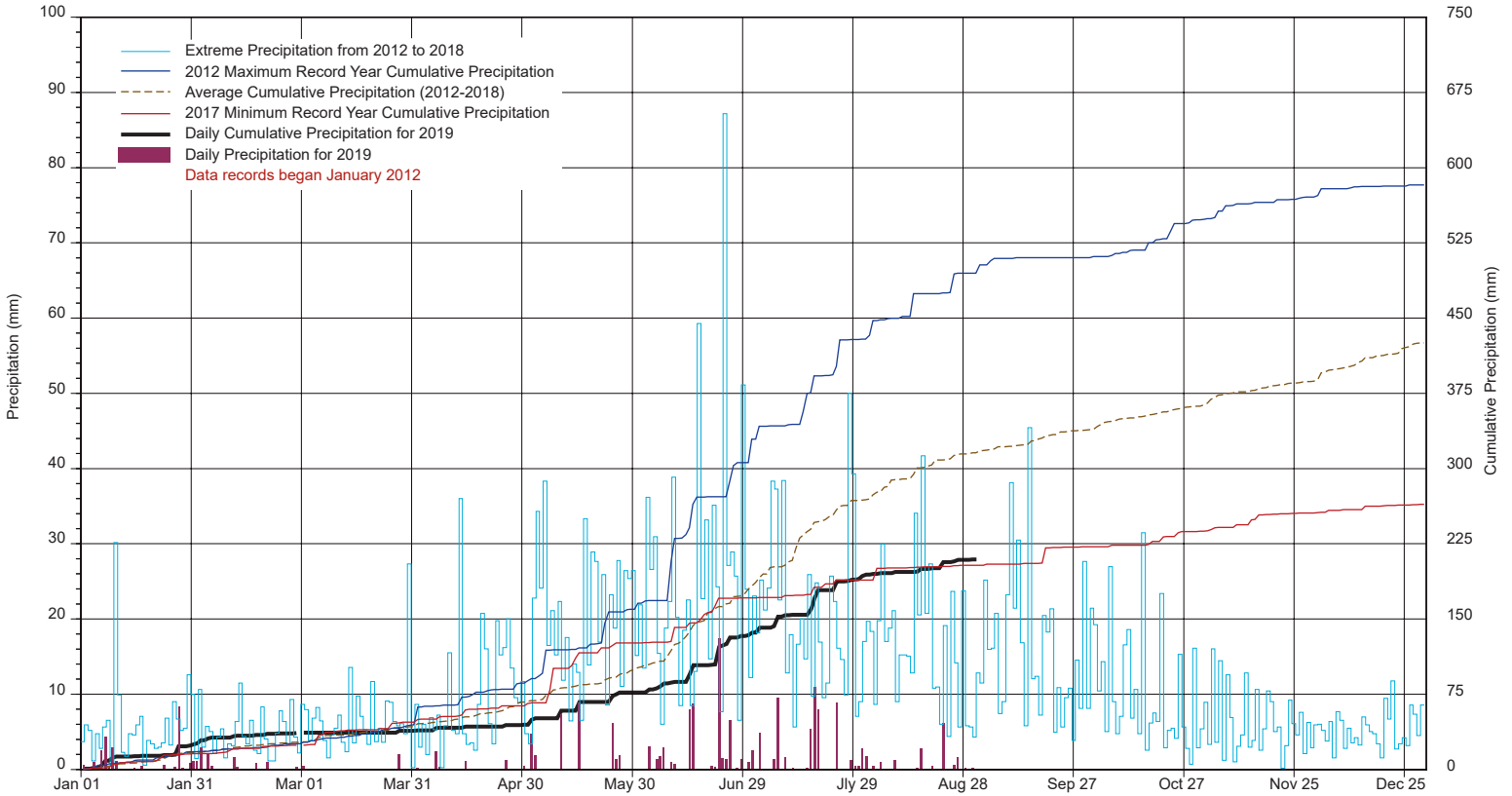


### Soil Temperatures for August 2019

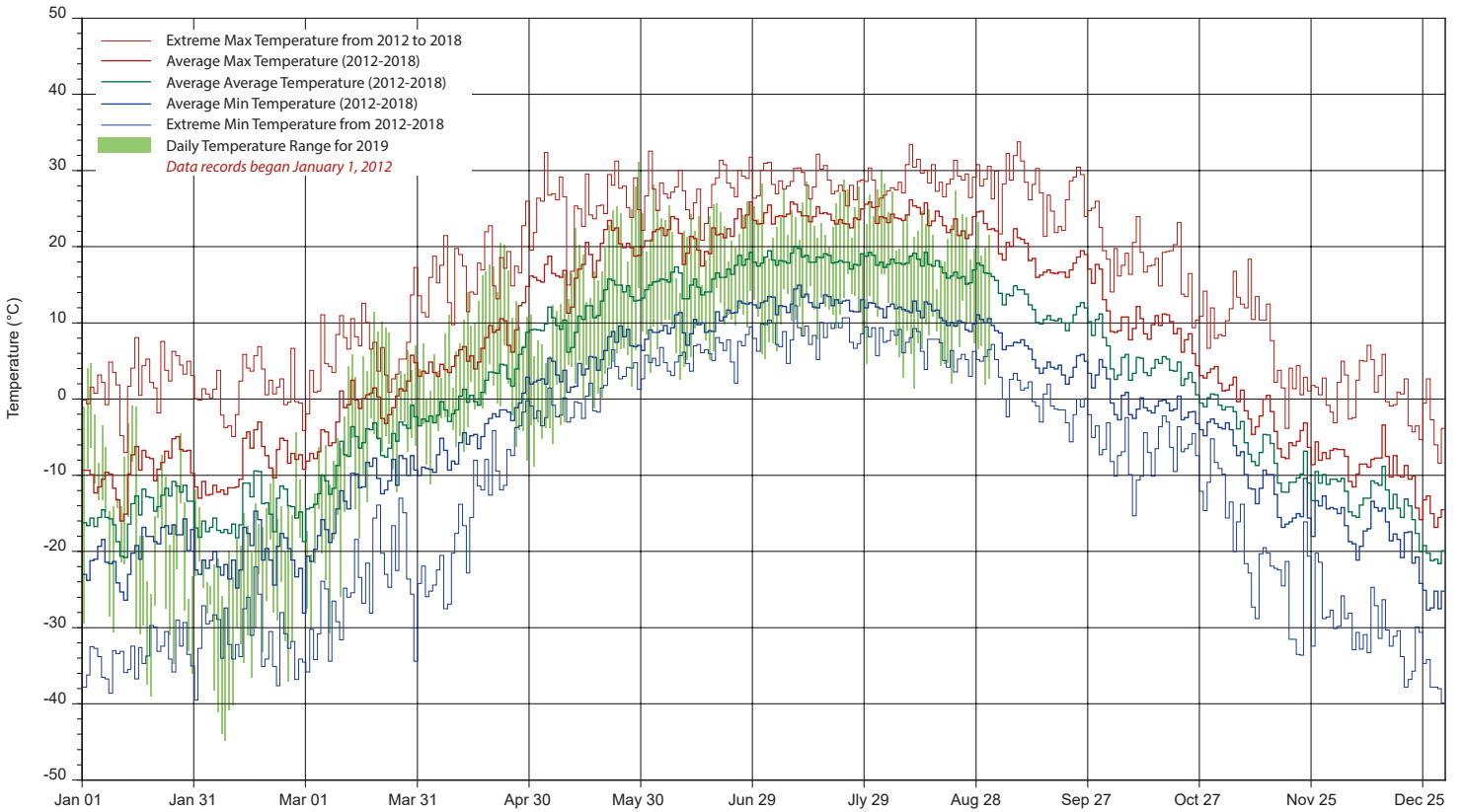
50 - 300cm Level



# SRC's CLIMATE REFERENCE STATION at the Conservation Learning Centre 2019 PRECIPITATION AND AVERAGE



## 2019 TEMPERATURES AND AVERAGES



SRC proudly recongnizes the following CRS supporters:



Agriculture and  
Agri-Food Canada

Agriculture et  
Agroalimentaire Canada



UNIVERSITY OF  
SASKATCHEWAN

