



SRC CLIMATE REFERENCE STATION DAILY DATA REPORT

CONSERVATION LEARNING CENTRE

Saskatchewan 53.03°N 105.77°W Estab. 2011

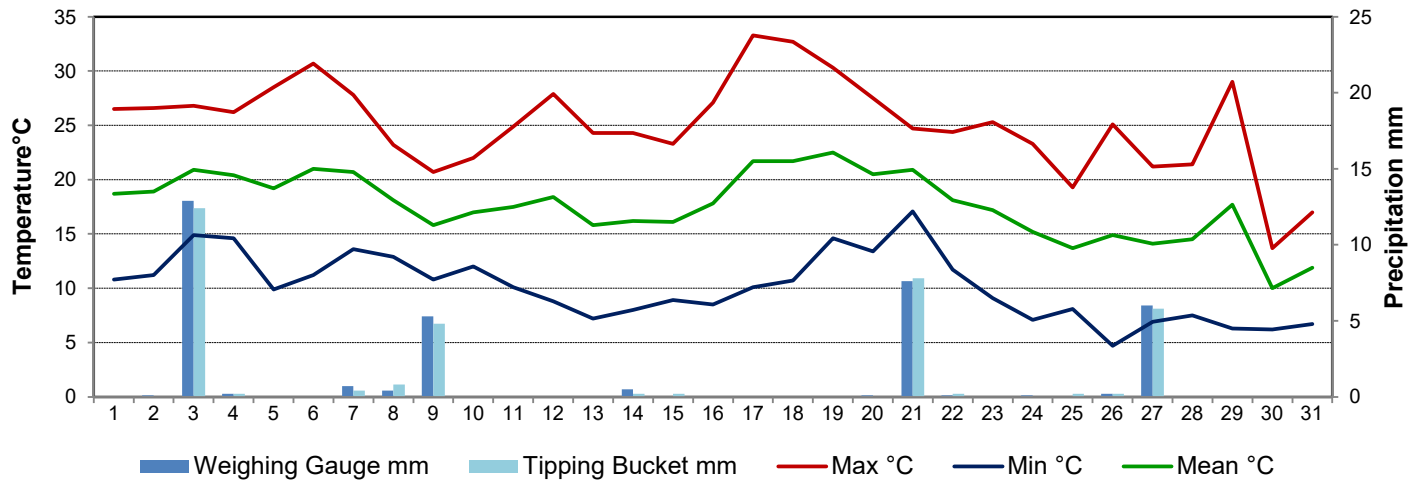
Preliminary **August 2020**

Day	Temperature			Degree-days			Precipitation			Relative Humidity		Station Pressure <i>corrected to sea level</i>	
	Max	Min	Mean	Growing	Heating	Cooling	Weighing Gauge	Tipping Bucket	Notes	Max ½ hr Avg	Min ½ hr Avg	Max ½ hr Avg	Min ½ hr Avg
	°C	°C	°C	5°C base	18°C base	18°C base	mm	mm		%	%	mbar	mbar
1	26.5	10.8	18.7	13.7	0.0	0.7	0.0	0.0		100	41	1023	1021
2	26.6	11.2	18.9	13.9	0.0	0.9	0.1	0.0		100	44	1022	1018
3	26.8	14.9	20.9	15.9	0.0	2.9	12.9	12.4		85	42	1018	1011
4	26.2	14.6	20.4	15.4	0.0	2.4	0.2	0.2		90	43	1013	1010
5	28.5	9.9	19.2	14.2	0.0	1.2	0.0	0.0		98	40	1013	1009
6	30.7	11.2	21.0	16.0	0.0	3.0	0.0	0.0		97	42	1009	1003
7	27.8	13.6	20.7	15.7	0.0	2.7	0.7	0.4		91	44	1003	1001
8	23.2	12.9	18.1	13.1	0.0	0.1	0.4	0.8		94	41	1007	1000
9	20.7	10.8	15.8	10.8	2.2	0.0	5.3	4.8		98	48	1008	1005
10	22.0	12.0	17.0	12.0	1.0	0.0	0.0	0.0		74	46	1006	1004
11	24.9	10.1	17.5	12.5	0.5	0.0	0.0	0.0		92	35	1010	1006
12	27.9	8.8	18.4	13.4	0.0	0.4	0.0	0.0		93	43	1010	1002
13	24.3	7.2	15.8	10.8	2.2	0.0	0.0	0.0		100	36	1012	1010
14	24.3	8.0	16.2	11.2	1.8	0.0	0.5	0.2		100	37	1013	1010
15	23.3	8.9	16.1	11.1	1.9	0.0	0.0	0.2		94	41	1014	1011
16	27.1	8.5	17.8	12.8	0.2	0.0	0.0	0.0		99	44	1019	1015
17	33.3	10.1	21.7	16.7	0.0	3.7	0.0	0.0		99	33	1018	1014
18	32.7	10.7	21.7	16.7	0.0	3.7	0.0	0.0		100	31	1014	1009
19	30.3	14.6	22.5	17.5	0.0	4.5	0.0	0.0		100	46	1010	1008
20	27.5	13.4	20.5	15.5	0.0	2.5	0.1	0.0		100	65	1009	1006
21	24.7	17.1	20.9	15.9	0.0	2.9	7.6	7.8		98	69	1008	1005
22	24.4	11.7	18.1	13.1	0.0	0.1	0.1	0.2		98	68	1011	1006
23	25.3	9.1	17.2	12.2	0.8	0.0	0.0	0.0		100	38	1014	1011
24	23.3	7.1	15.2	10.2	2.8	0.0	0.1	0.0		100	47	1015	1012
25	19.3	8.1	13.7	8.7	4.3	0.0	0.0	0.2		100	75	1011	1007
26	25.1	4.7	14.9	9.9	3.1	0.0	0.2	0.2		100	38	1011	1009
27	21.2	6.9	14.1	9.1	3.9	0.0	6.0	5.8		100	63	1012	1010
28	21.4	7.5	14.5	9.5	3.5	0.0	0.0	0.0		100	51	1015	1011
29	29.0	6.3	17.7	12.7	0.3	0.0	0.0	0.0		100	30	1013	998
30	13.7	6.2	10.0	5.0	8.0	0.0	0.0	0.0		95	58	1004	1002
31	17.0	6.7	11.9	6.9	6.1	0.0	0.0	0.0		82	38	1005	998
Total				392.1	42.6	31.7	34.2	33.2					
Avg	25.1	10.1	17.6				299.3	Cumulative ppt					
Extreme	33.3	4.7					12.9	12.4		100	30	1023	998
Date	17	26					3	3		1	29	1	29

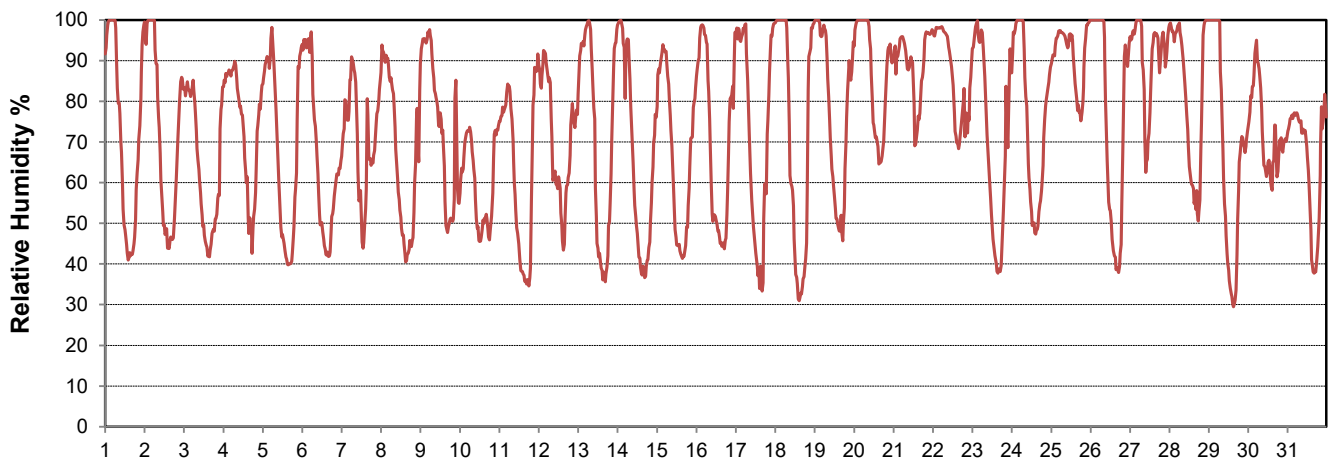
SRC proudly recognizes the following CRS supporters:



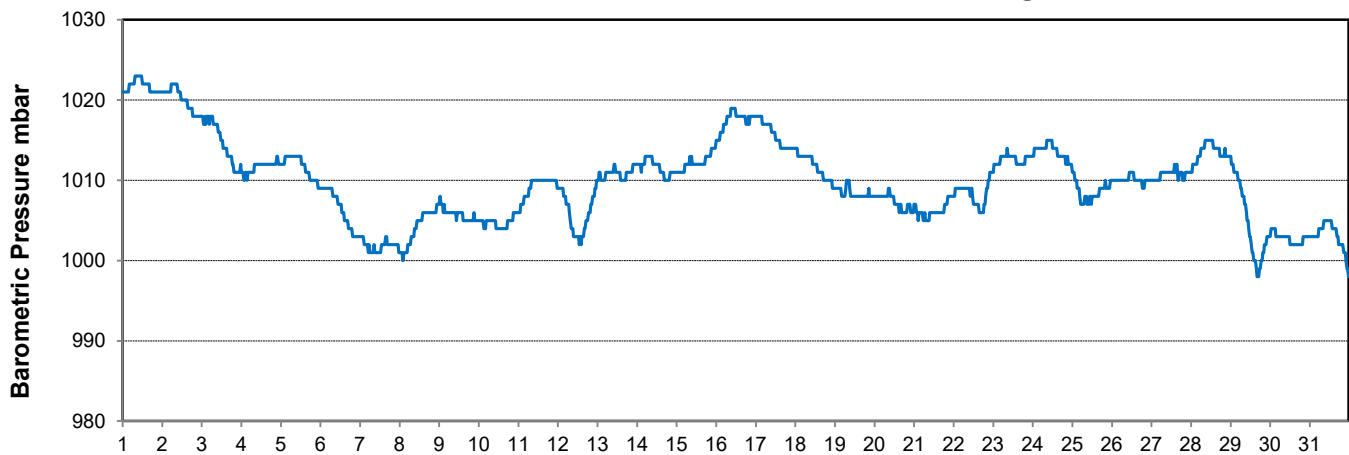
Temperature and Precipitation for August 2020



Relative Humidity for August 2020



Barometric Pressure Corrected to Sea Level for August 2020





SRC CLIMATE REFERENCE STATION DAILY DATA REPORT

CONSERVATION LEARNING CENTRE

Saskatchewan 53.03°N 105.77°W Estab. 2011

Preliminary

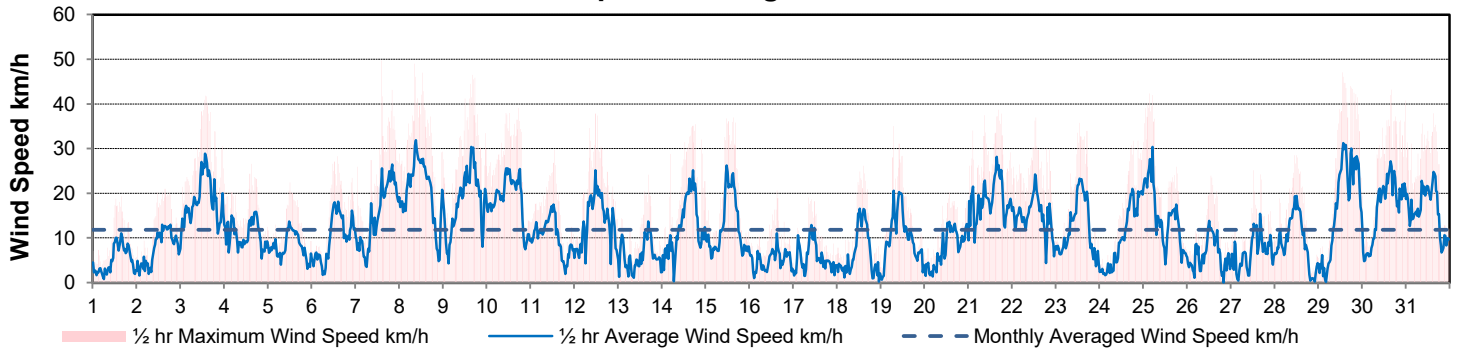
August 2020

Day	Wind Gust (10 meter)			Wind Speed (10 meter) Daily Average	Soil Temperatures at 0900hrs								Radiation				
	Max	Direction	Time		Surface	5 cm	10 cm	20 cm	50 cm	100 cm	150 cm	300 cm	Bright Sunshine	Possible	% Possible	Global	Diffuse
	km/h				°C	°C	°C	°C	°C	°C	°C	°C	hours	hours		MJ/m ²	MJ/m ²
1	19.4	E	15:44	5.2	18.5	17.5	18.5	18.0	16.0	12.5	10.0	5.5	14.8	15.6	95.1	25.9	3.9
2	21.0	SE	15:38	7.7	19.5	17.0	18.0	17.5	16.0	13.0	10.0	5.5	14.2	15.5	91.6	23.3	6.6
3	41.8	S	13:39	18.3	20.5	17.5	18.5	17.5	16.0	13.0	10.0	5.5	11.3	15.5	73.1	22.8	4.0
4	26.6	NNW	15:18	10.7	18.5	17.5	18.0	17.5	16.0	13.0	10.0	5.5	9.5	15.4	61.7	19.6	7.5
5	22.4	WSW	12:29	8.2	18.5	16.5	17.5	17.5	16.0	13.0	10.5	5.5	14.8	15.3	96.5	25.5	2.8
6	28.3	SSE	14:24	10.3	20.0	16.5	17.5	17.5	16.0	13.0	10.5	5.5	14.3	15.3	93.6	24.7	3.5
7	49.7	SW	14:25	15.3	19.0	18.0	18.5	18.0	16.0	13.0	10.5	5.5	6.1	15.2	40.1	16.0	7.9
8	49.0	WNW	8:45	20.8	16.0	17.0	17.5	17.0	16.0	13.0	10.5	5.5	11.8	15.2	77.8	23.5	4.3
9	46.5	NW	16:06	18.3	13.5	15.5	16.5	16.5	15.5	13.0	10.5	5.5	6.2	15.1	41.1	15.4	8.5
10	39.1	NW	17:52	18.7	16.5	15.0	16.0	16.0	15.5	13.5	11.0	6.0	13.7	15.0	91.1	23.6	5.1
11	29.7	W	13:03	10.3	15.5	14.5	15.5	15.5	15.0	13.0	11.0	6.0	13.8	15.0	92.1	24.3	3.7
12	37.8	S	11:46	13.4	18.0	15.0	15.5	15.5	15.0	13.0	11.0	6.0	6.6	14.9	44.3	15.9	7.9
13	24.2	WSW	16:34	6.0	13.5	15.0	15.5	16.0	15.0	13.0	11.0	6.0	11.0	14.9	74.1	21.7	4.4
14	35.5	W	18:30	12.6	17.0	15.0	16.0	15.5	15.0	13.0	11.0	6.0	12.1	14.8	81.8	22.4	4.7
15	36.9	NW	15:11	12.8	15.0	14.5	15.5	15.5	15.0	13.0	11.0	6.0	13.4	14.7	91.0	23.0	4.5
16	20.6	WNW	15:00	4.9	16.0	14.5	15.0	15.5	15.0	13.0	11.0	6.0	13.5	14.7	92.1	23.2	2.5
17	19.1	SW	8:55	5.6	20.0	15.0	15.5	15.5	15.0	13.0	11.0	6.0	11.3	14.6	77.4	20.6	5.1
18	26.1	WNW	14:50	6.6	19.5	16.0	16.5	16.5	15.0	13.0	11.0	6.5	13.8	14.5	95.0	22.9	2.8
19	35.0	NNW	7:08	10.1	20.5	17.0	17.5	16.5	15.0	13.0	11.0	6.5	12.4	14.5	85.7	21.3	4.4
20	20.3	ENE	13:39	7.9	17.5	17.0	17.5	17.0	15.5	13.0	11.0	6.5	7.5	14.4	52.1	15.5	7.9
21	38.7	E	16:57	18.2	18.5	18.0	18.0	17.0	15.5	13.0	11.0	6.0	4.3	14.3	30.0	13.3	6.5
22	36.9	ESE	13:03	14.8	17.0	17.0	17.0	16.5	14.5	12.5	10.5	5.5	2.9	14.3	20.3	10.6	6.8
23	35.8	W	13:12	12.2	16.5	15.0	16.0	16.5	15.5	13.0	11.0	6.5	12.4	14.2	87.3	21.8	3.0
24	31.7	E	21:27	10.4	14.5	14.0	15.0	16.0	15.5	13.5	11.0	6.5	13.3	14.1	94.1	20.1	4.9
25	42.4	E	3:51	15.0	13.5	15.5	15.5	15.5	15.0	13.0	11.0	6.0	3.2	14.1	22.7	7.3	5.3
26	23.9	WNW	13:18	6.1	13.0	13.0	14.0	15.0	15.0	13.5	11.5	6.5	12.2	14.0	87.1	21.1	4.5
27	25.1	NW	12:52	7.0	14.5	14.0	15.0	15.0	15.0	13.0	11.5	7.0	3.7	13.9	26.5	6.4	4.2
28	28.5	NW	11:08	9.4	12.5	12.5	13.5	14.0	14.5	13.0	11.5	6.5	11.8	13.9	85.1	18.8	3.8
29	47.1	SSE	13:21	16.8	15.5	12.5	13.5	14.0	14.5	13.0	11.5	7.0	10.1	13.8	73.1	17.6	5.5
30	43.2	NW	16:20	16.8	11.0	13.0	13.5	14.5	14.0	13.0	11.5	7.0	4.5	13.7	32.8	10.9	6.5
31	37.9	WNW	15:27	16.4	9.0	12.0	12.5	13.5	14.0	13.0	11.5	7.0	6.4	13.7	46.8	13.1	4.9
Total													316.9	454.1	69.8	592.1	157.9
Mean				11.8	16.4	15.4	16.1	16.1	15.2	13.0	10.9	6.1					
Extreme	49.7	SW	14:25														
Date	7																

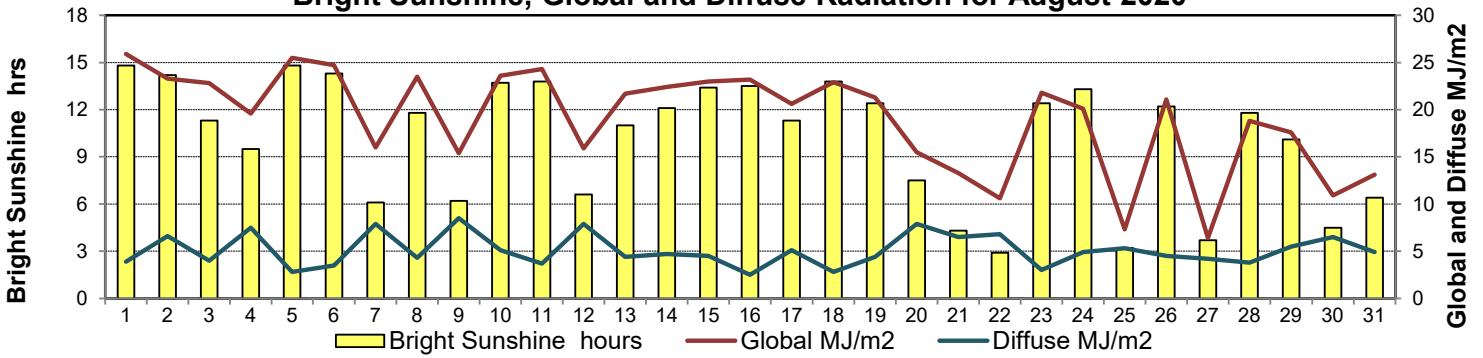
GLOSSARY OF TERMS

Degree-days	Radiation
Tm Mean Temperature	Bright Sunshine is the unobstructed direct radiation from the sun, as opposed to the shading of a location by clouds or by other atmospheric obstructions.
Growing (Tm-5°C); if Tm ≤ 5°C then GDD = 0	
Heating (18°C-Tm); if Tm ≥ 18°C then HDD = 0	
Cooling (Tm-18°C); if Tm ≤ 18°C then CDD = 0	Diffuse is radiation reaching the earth's surface after having been scattered from the direct solar beam
T Trace of Precipitation	Global is the sum of the direct solar and diffuse radiation
SOG Depth of snow-on-the-ground	Relative Humidity The ratio of the air's water vapour content to its water vapour capacity which changes with temperature.
Red Cell no data available	Air Pressure The force exerted by the weight of a column of air above a given point
Red Number manual calculation	Wind Gust The daily highest instantaneous value recorded irrespective of direction and/or duration

Wind Speed for August 2020

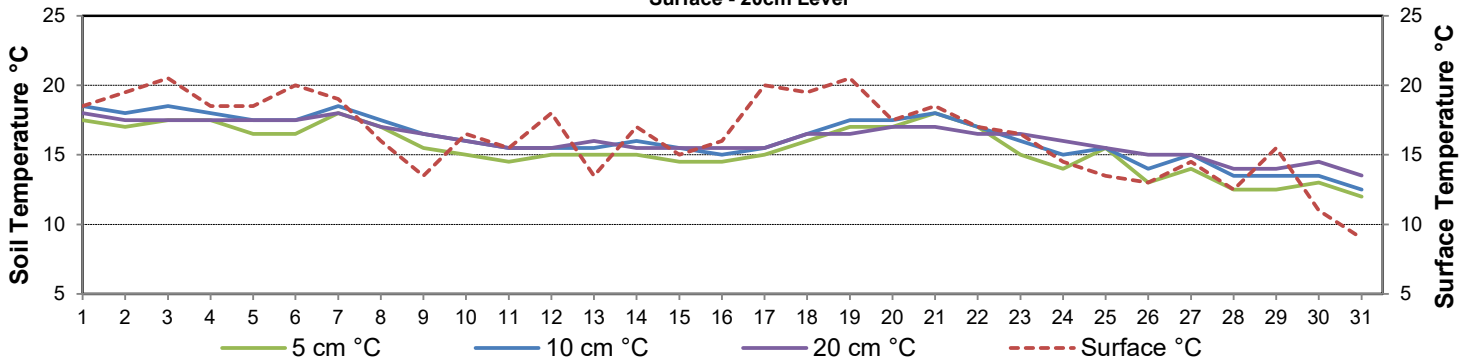


Bright Sunshine, Global and Diffuse Radiation for August 2020



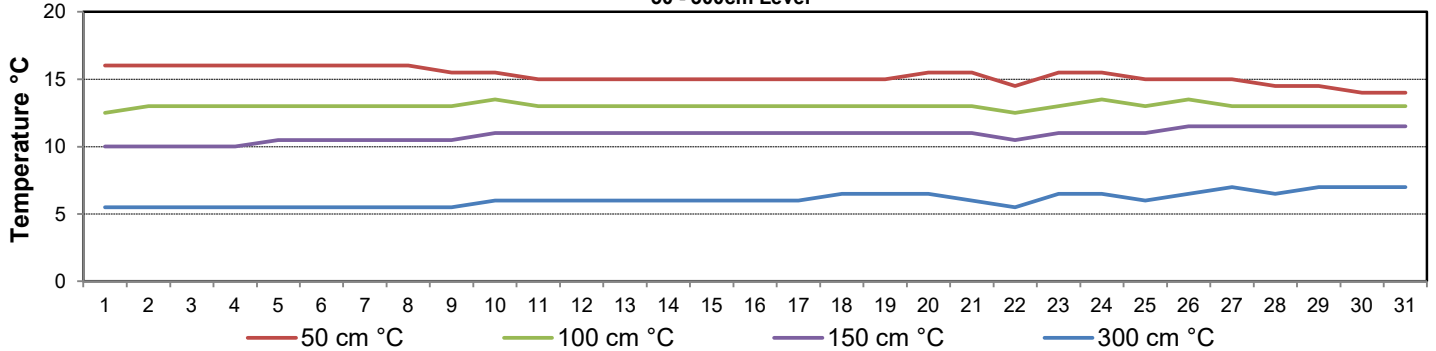
Soil Temperatures for August 2020

Surface - 20cm Level



Soil Temperatures for August 2020

50 - 300cm Level





SRC CLIMATE REFERENCE STATION DAILY DATA REPORT

CONSERVATION LEARNING CENTRE

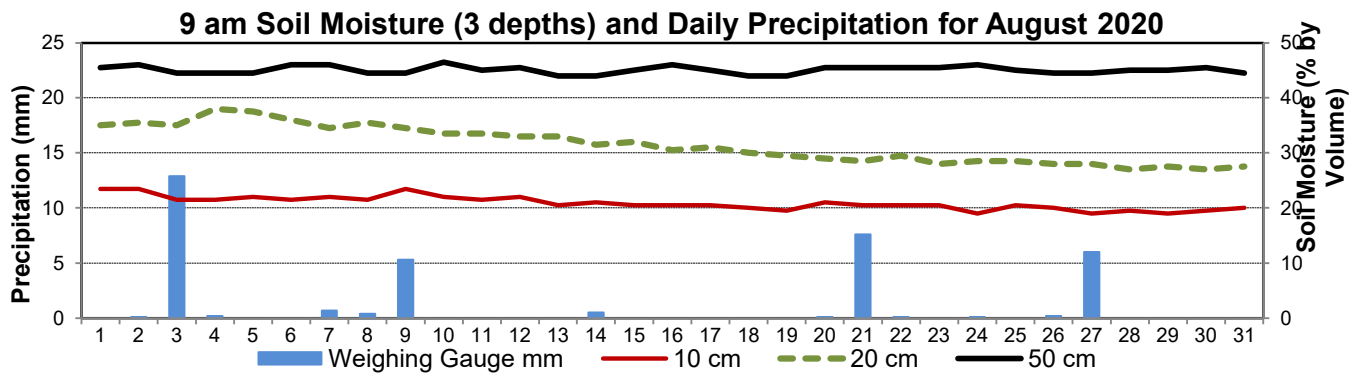
Saskatchewan 53.03°N 105.77°W Estab. 2011

August 2020

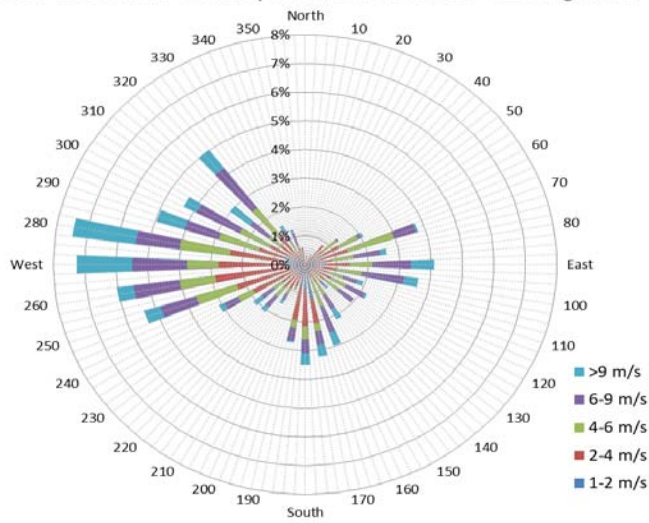
Day	2 meter Wind Speed			Soil Moisture at 0900 hrs (rounded to the 0.5%)														
	Daily Average	Max ½ hr Avg	½ hr Extreme Max	10 cm	20 cm	50 cm												
	km/h	km/h	km/h	% by volume (soil type is Clay Loam)														
1	4.0	9.3	15.8	23.5	35.0	45.5												
2	5.0	9.1	16.2	23.5	35.5	46.0												
3	12.0	18.5	31.0	21.5	35.0	44.5												
4	8.0	12.1	20.4	21.5	38.0	44.5												
5	6.0	10.7	17.4	22.0	37.5	44.5												
6	6.0	12.1	19.9	21.5	36.0	46.0												
7	11.0	19.9	38.7	22.0	34.5	46.0												
8	15.0	23.1	37.5	21.5	35.5	44.5												
9	13.0	22.2	35.4	23.5	34.5	44.5												
10	14.0	18.9	30.4	22.0	33.5	46.5												
11	8.0	13.3	20.2	21.5	33.5	45.0												
12	9.0	15.8	26.2	22.0	33.0	45.5												
13	4.0	11.1	21.2	20.5	33.0	44.0												
14	9.0	17.7	26.8	21.0	31.5	44.0												
15	9.0	18.9	26.0	20.5	32.0	45.0												
16	3.0	8.7	14.1	20.5	30.5	46.0												
17	3.0	10.1	16.2	20.5	31.0	45.0												
18	4.0	12.4	19.5	20.0	30.0	44.0												
19	7.0	15.5	24.1	19.5	29.5	44.0												
20	6.0	11.2	16.6	21.0	29.0	45.5												
21	14.0	21.0	31.0	20.5	28.5	45.5												
22	11.0	16.6	27.5	20.5	29.5	45.5												
23	8.0	16.6	29.1	20.5	28.0	45.5												
24	8.0	15.3	23.3	19.0	28.5	46.0												
25	11.0	19.7	32.5	20.5	28.5	45.0												
26	4.0	10.4	18.3	20.0	28.0	44.5												
27	4.0	9.4	17.9	19.0	28.0	44.5												
28	6.0	13.8	21.8	19.5	27.0	45.0												
29	11.0	20.5	34.6	19.0	27.5	45.0												
30	12.0	18.4	31.4	19.5	27.0	45.5												
31	11.0	17.0	26.0	20.0	27.5	44.5												
Total																		
Mean				21	32	45.1												
Extreme	15.0	23.1	38.7	23.5	38	46.5												
Date	17.5	17.5	18	18	18	16												

SRC proudly recognizes the following CRS supporters:





1/2 hr Maximum Wind Speed and Direction CLC Aug 2020



10 minute Average Wind Speed and Direction CLC Aug 2020

