



# SRC CLIMATE REFERENCE STATION DAILY DATA REPORT

## CONSERVATION LEARNING CENTRE

Saskatchewan 53.03°N 105.77°W 451m asl Estab. 2011

Preliminary

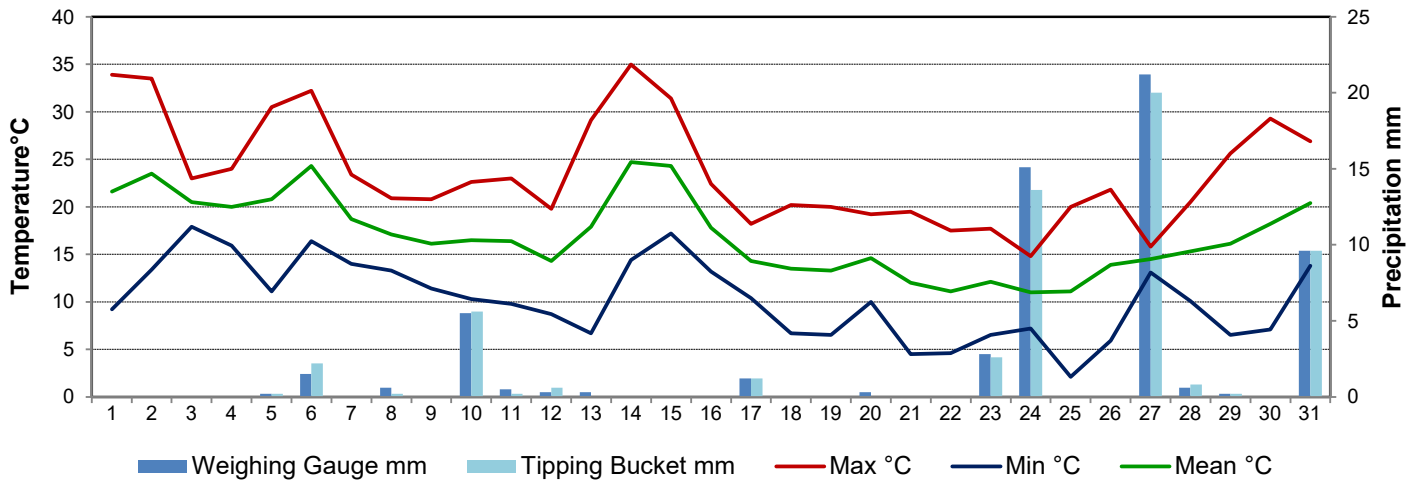
**August 2021**

Day	Temperature			Degree-days			Precipitation			Relative Humidity		Station Pressure <i>corrected to sea level</i>	
	Max	Min	Mean	Growing	Heating	Cooling	Weighing Gauge	Tipping Bucket	Notes	Max ½ hr Avg	Min ½ hr Avg	Max ½ hr Avg	Min ½ hr Avg
	°C	°C	°C	5°C base	18°C base	18°C base	mm	mm		%	%	mbar	mbar
1	33.9	9.2	21.6	16.6	0.0	3.6	0.0	0.0		100	26	1023	1018
2	33.5	13.4	23.5	18.5	0.0	5.5	0.0	0.0		98	33	1018	1014
3	23.0	17.9	20.5	15.5	0.0	2.5	0.0	0.0		94	73	1014	1008
4	24.0	15.9	20.0	15.0	0.0	2.0	0.0	0.0		99	65	1015	1008
5	30.5	11.1	20.8	15.8	0.0	2.8	0.2	0.2		100	41	1015	1008
6	32.2	16.4	24.3	19.3	0.0	6.3	1.5	2.2		91	36	1009	1003
7	23.4	14.0	18.7	13.7	0.0	0.7	0.0	0.0		100	58	1003	1000
8	20.9	13.3	17.1	12.1	0.9	0.0	0.6	0.2		100	53	1010	1000
9	20.8	11.4	16.1	11.1	1.9	0.0	0.0	0.0		97	62	1011	1004
10	22.6	10.3	16.5	11.5	1.5	0.0	5.5	5.6		100	39	1004	998
11	23.0	9.8	16.4	11.4	1.6	0.0	0.5	0.2		87	43	1010	999
12	19.8	8.7	14.3	9.3	3.7	0.0	0.3	0.6		94	43	1017	1010
13	29.1	6.7	17.9	12.9	0.1	0.0	0.3	0.0		99	34	1018	1012
14	35.0	14.4	24.7	19.7	0.0	6.7	0.0	0.0		79	26	1012	1005
15	31.4	17.2	24.3	19.3	0.0	6.3	0.0	0.0		76	30	1009	1004
16	22.4	13.2	17.8	12.8	0.2	0.0	0.0	0.0		80	53	1006	999
17	18.2	10.4	14.3	9.3	3.7	0.0	1.2	1.2		96	42	1016	1006
18	20.2	6.7	13.5	8.5	4.5	0.0	0.0	0.0		100	48	1019	1016
19	20.0	6.5	13.3	8.3	4.7	0.0	0.0	0.0		100	58	1016	1011
20	19.2	10.0	14.6	9.6	3.4	0.0	0.3	0.0		99	63	1011	1010
21	19.5	4.5	12.0	7.0	6.0	0.0	0.0	0.0		97	27	1012	1010
22	17.5	4.6	11.1	6.1	6.9	0.0	0.0	0.0		88	37	1011	1007
23	17.7	6.5	12.1	7.1	5.9	0.0	2.8	2.6		92	53	1013	1009
24	14.8	7.2	11.0	6.0	7.0	0.0	15.1	13.6		100	82	1019	1011
25	20.0	2.1	11.1	6.1	6.9	0.0	0.0	0.0		100	45	1022	1019
26	21.8	5.9	13.9	8.9	4.1	0.0	0.0	0.0		96	41	1020	1013
27	15.8	13.1	14.5	9.5	3.5	0.0	21.2	20.0		100	74	1013	1009
28	20.5	10.1	15.3	10.3	2.7	0.0	0.6	0.8		100	71	1013	1009
29	25.6	6.5	16.1	11.1	1.9	0.0	0.2	0.2		100	39	1014	1011
30	29.3	7.1	18.2	13.2	0.0	0.2	0.0	0.0		100	32	1012	1007
31	26.9	13.8	20.4	15.4	0.0	2.4	9.6	9.6		96	49	1007	1001
Total				370.9	71.1	39.0	59.9	57.0					
Avg	<b>23.6</b>	<b>10.3</b>	<b>17.0</b>				219.1	Jan to Aug Cumulative ppt					
Extreme	35.0	2.1					21.2	20.0		100	26	1023	998
Date	14	25					27	27		1	1	1	10

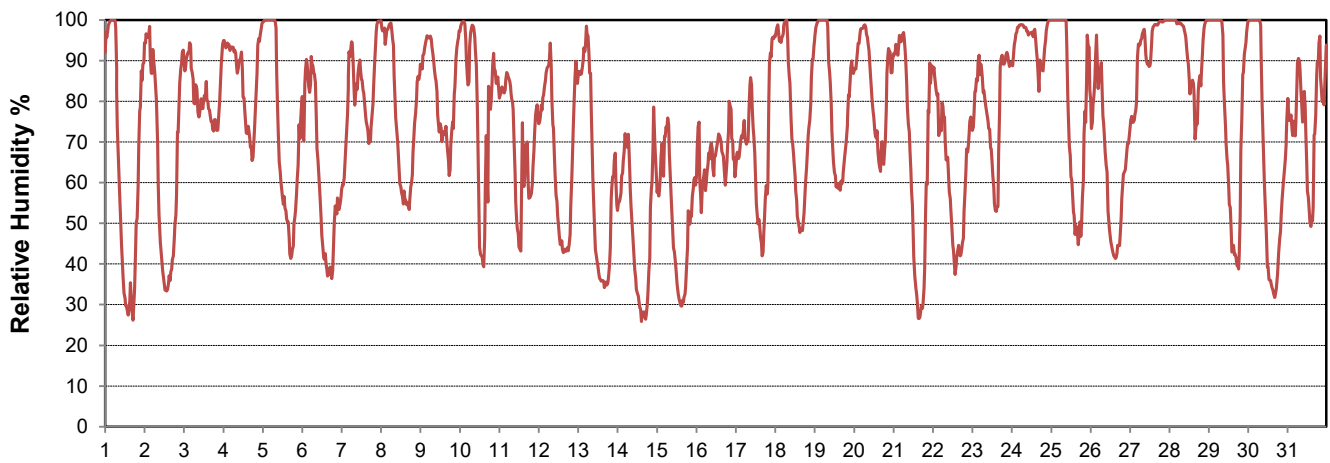
**SRC proudly recognizes the following CRS supporters:**



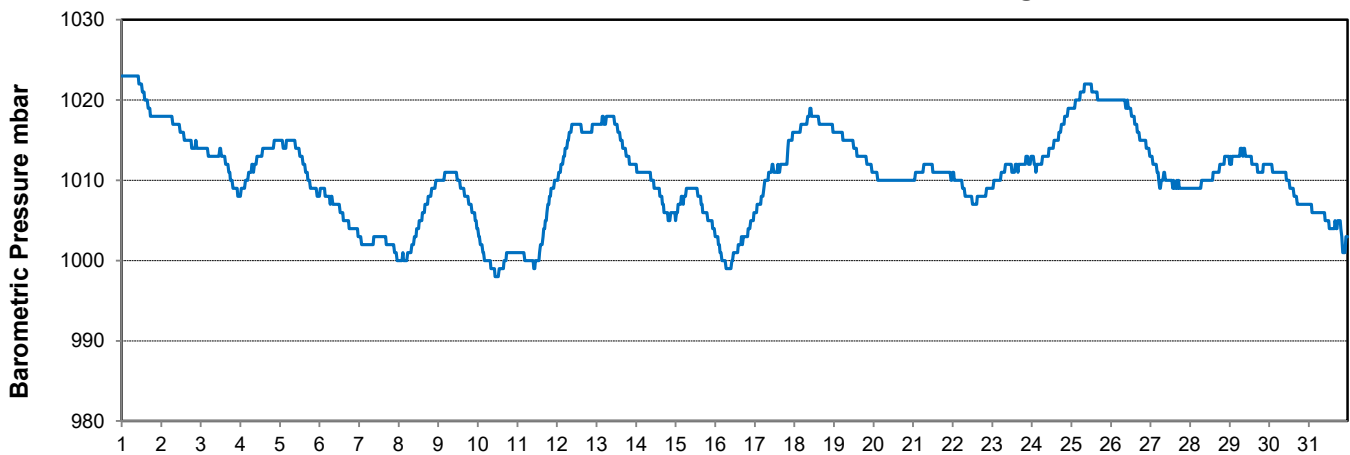
### Temperature and Precipitation for August 2021



### Relative Humidity for August 2021



### Barometric Pressure Corrected to Sea Level for August 2021





# SRC CLIMATE REFERENCE STATION DAILY DATA REPORT

## CONSERVATION LEARNING CENTRE

Saskatchewan 53.03°N 105.77°W 451m asl Estab. 2011

Preliminary

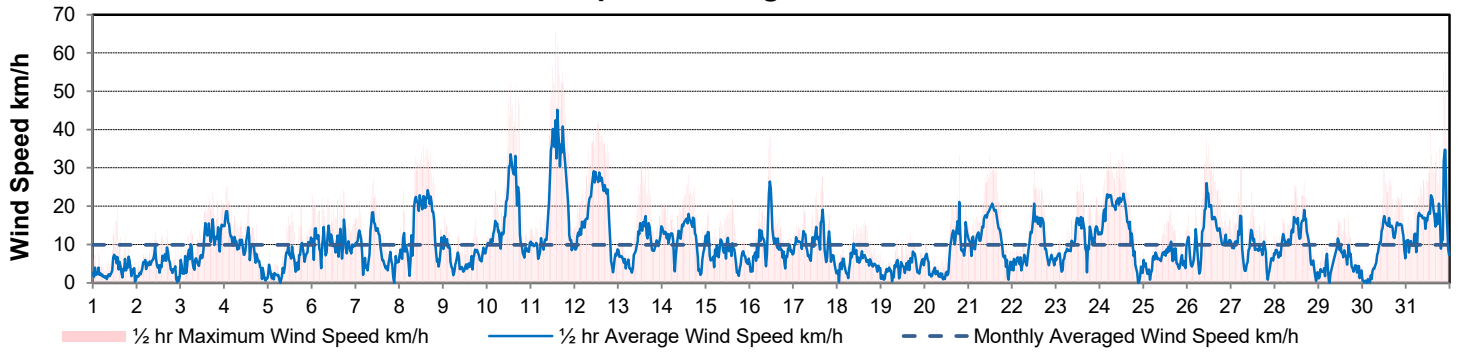
August 2021

Day	Wind Gust (10 meter)			Wind Speed (10 meter) Daily Average	Soil Temperatures at 0900hrs								Radiation				
	Max	Direction	Time		Surface	5 cm	10 cm	20 cm	50 cm	100 cm	150 cm	300 cm	Bright Sunshine	Possible	% Possible	Global	Diffuse
	km/h				°C	°C	°C	°C	°C	°C	°C	°C	hours	hours		MJ/m <sup>2</sup>	MJ/m <sup>2</sup>
1	19.7	SW	13:51	3.4	20.0	17.0	18.0	17.5	16.0	13.5	11.0	6.5	13.1	15.6	84.1	21.2	7.8
2	13.8	NNW	16:54	4.6	23.0	18.0	18.5	18.0	16.0	13.5	11.0	6.5	10.4	15.5	67.0	18.6	10.4
3	24.0	E	17:31	9.0	21.0	19.5	20.0	18.5	16.5	13.5	11.5	6.5	0.0	15.5	0.0	4.5	4.1
4	25.1	N	1:45	9.0	18.5	18.5	19.0	17.5	16.0	13.5	11.5	6.5	1.4	15.4	9.1	8.1	7.0
5	19.6	SSW	18:16	5.5	17.5	17.0	17.5	17.0	16.0	13.5	11.5	6.5	11.7	15.4	76.2	20.6	8.4
6	24.1	S	17:38	10.6	20.5	18.5	19.0	18.0	16.0	14.0	11.5	6.5	11.1	15.3	72.6	18.5	9.9
7	27.2	NW	9:51	8.4	20.0	18.5	19.0	18.0	16.5	14.0	11.5	7.0	2.8	15.2	18.4	9.5	7.9
8	35.6	NW	13:16	14.1	17.0	17.5	18.0	17.5	16.5	14.0	11.5	7.0	6.9	15.2	45.5	16.6	9.9
9	17.5	NNW	0:55	6.4	15.5	16.5	17.0	17.0	16.0	14.0	11.5	7.0	3.4	15.1	22.5	9.9	7.7
10	51.9	NW	13:16	16.3	13.5	15.5	16.0	16.0	15.5	14.0	11.5	6.5	6.3	15.1	41.9	15.7	5.9
11	65.7	NW	13:49	21.0	13.5	14.5	15.0	15.5	15.0	14.0	11.5	7.0	8.5	15.0	56.7	18.8	5.9
12	41.7	NW	12:50	17.8	12.5	14.0	14.5	15.0	15.0	14.0	11.5	7.0	11.1	14.9	74.3	22.9	4.7
13	32.2	WSW	15:19	9.4	17.5	13.5	14.0	15.0	14.5	13.5	12.0	7.0	13.8	14.9	92.8	23.8	3.1
14	28.3	W	14:40	11.7	21.5	16.0	16.0	16.0	15.0	13.5	12.0	7.0	13.0	14.8	87.8	19.1	7.7
15	21.8	W	14:34	7.6	22.5	17.0	17.5	16.5	15.0	13.5	12.0	7.0	10.6	14.7	71.9	19.7	6.1
16	38.4	N	11:58	10.0	19.0	17.5	18.0	17.0	15.5	13.5	11.5	7.0	2.2	14.7	15.0	7.1	5.7
17	27.6	NW	16:06	9.8	11.5	15.5	16.0	16.0	15.0	13.5	11.5	7.5	0.2	14.6	1.4	5.5	4.9
18	16.1	ENE	15:11	5.4	12.5	14.0	14.5	15.0	15.0	13.5	12.0	7.5	9.4	14.6	64.6	16.1	10.0
19	12.7	N	16:24	4.0	13.5	14.0	14.5	15.0	15.0	13.5	12.0	7.5	2.0	14.5	13.8	11.2	9.5
20	33.3	N	19:04	7.0	12.5	14.5	15.0	15.0	14.0	13.5	12.0	7.5	2.0	14.4	13.9	8.0	6.7
21	33.3	NW	11:51	12.1	12.5	13.0	13.5	14.5	14.0	13.5	12.0	7.5	13.0	14.4	90.6	22.5	4.1
22	30.9	E	12:05	9.3	11.5	13.0	13.5	14.0	14.0	13.5	12.0	7.5	0.0	14.3	0.0	6.0	5.5
23	28.5	ESE	13:39	10.7	11.0	12.5	13.0	13.5	13.0	13.0	12.0	7.5	1.2	14.2	8.4	7.1	6.1
24	33.9	NE	6:17	15.5	10.5	12.5	12.5	13.5	13.0	13.0	11.5	7.5	0.3	14.2	2.1	5.7	5.0
25	22.3	SSW	14:39	6.1	10.0	10.5	11.0	12.5	12.5	13.0	11.5	7.5	9.8	14.1	69.6	17.7	7.9
26	37.3	SSW	10:50	12.5	15.0	12.0	12.5	13.5	12.5	13.0	11.5	7.5	9.4	14.0	67.0	17.7	8.1
27	30.6	ESE	5:30	8.7	13.5	14.0	14.0	14.0	13.5	12.5	11.5	7.5	0.0	14.0	0.0	2.6	2.4
28	26.3	N	16:07	10.5	13.5	13.5	13.5	14.0	13.5	12.5	11.5	7.5	2.9	13.9	20.9	10.2	8.0
29	18.2	W	16:47	5.3	13.5	12.5	13.0	14.0	13.5	12.5	11.5	7.5	12.1	13.8	87.6	19.1	5.8
30	30.8	ESE	11:42	9.3	16.0	13.0	13.5	14.5	14.0	12.5	11.5	8.0	12.0	13.8	87.2	19.1	4.0
31	57.7	ESE	21:38	15.9	16.5	15.0	15.0	15.0	13.5	12.5	11.5	8.0	3.6	13.7	26.3	8.1	4.7
Total													204.2	454.5	44.9	431.2	204.9
Mean				9.9	15.7	15.1	15.5	15.6	14.7	13.4	11.6	7.2					
Extreme	65.7	NW	13:49														
Date	11																

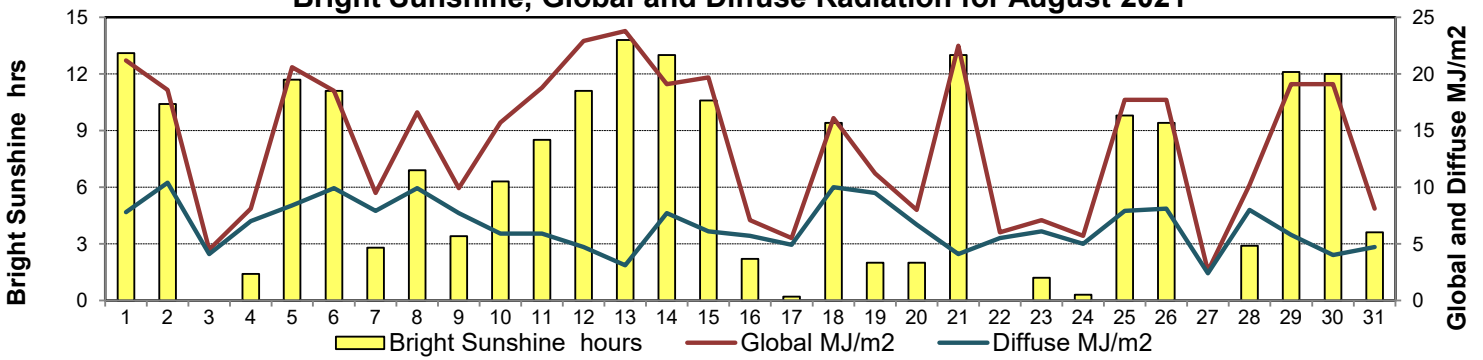
### GLOSSARY OF TERMS

<b>Degree-days</b>	<b>Radiation</b>
Tm Mean Temperature	Bright Sunshine is the unobstructed direct radiation from the sun, as opposed to the shading of a location by clouds or by other atmospheric obstructions.
Growing (Tm-5°C); if Tm ≤ 5°C then GDD = 0	
Heating (18°C-Tm); if Tm ≥ 18°C then HDD = 0	
Cooling (Tm-18°C); if Tm ≤ 18°C then CDD = 0	Diffuse is radiation reaching the earth's surface after having been scattered from the direct solar beam
T Trace of Precipitation	Global is the sum of the direct solar and diffuse radiation
SOG Depth of snow-on-the-ground	<b>Relative Humidity</b> The ratio of the air's water vapour content of its water vapour capacity which changes with temperature.
Red Cell no data available	<b>Air Pressure</b> The force exerted by the weight of a column of air above a given point
Red Number manual calculation	<b>Wind Gust</b> The daily highest instantaneous value recorded irrespective of direction and/or duration

### Wind Speed for August 2021

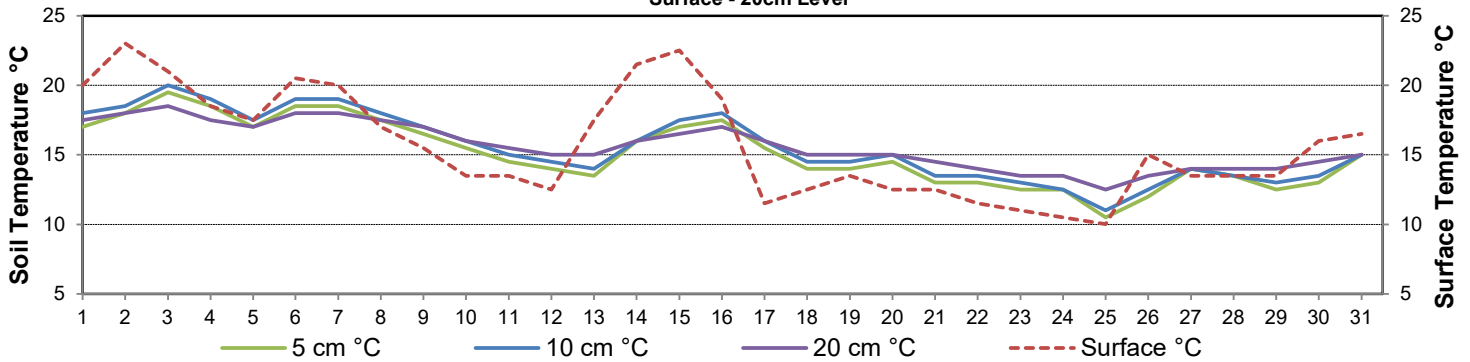


### Bright Sunshine, Global and Diffuse Radiation for August 2021



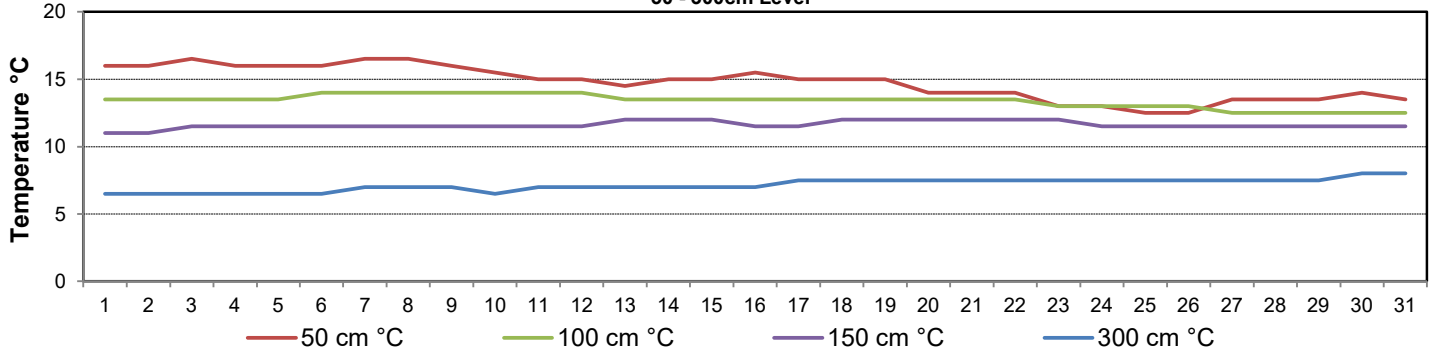
### Soil Temperatures for August 2021

Surface - 20cm Level



### Soil Temperatures for August 2021

50 - 300cm Level





# SRC CLIMATE REFERENCE STATION DAILY DATA REPORT

## CONSERVATION LEARNING CENTRE

Saskatchewan 53.03°N 105.77°W 451m asl Estab. 2011

**August 2021**

Day	2 meter Wind Speed			Soil Moisture at 0900 hrs (rounded to the 0.5%)														
	Daily Average	Max ½ hr Avg	½ hr Extreme Max	10 cm	20 cm	50 cm												
	km/h	km/h	km/h	% by volume (soil type is Clay Loam)														
1	2.0	6.7	14.9	17.0	23.0	41.0												
2	3.0	7.0	11.8	16.5	23.0	42.0												
3	6.0	11.8	18.1	18.0	24.0	42.0												
4	7.0	13.5	19.9	17.5	24.0	42.0												
5	4.0	8.2	15.4	16.5	22.5	42.0												
6	7.0	10.8	16.2	16.5	22.5	41.0												
7	6.0	12.7	18.9	16.5	23.5	42.0												
8	9.0	16.4	25.4	16.5	22.5	40.5												
9	5.0	7.8	11.8	17.5	23.0	40.5												
10	11.0	22.6	38.5	17.5	23.5	41.5												
11	14.0	29.6	43.3	16.5	22.5	40.5												
12	12.0	19.7	28.9	15.5	23.0	40.0												
13	6.0	12.7	27.3	16.0	23.0	41.0												
14	8.0	13.5	20.6	17.5	21.5	40.5												
15	5.0	9.0	17.0	16.5	22.5	38.5												
16	6.0	18.6	26.6	17.5	23.5	40.0												
17	7.0	13.0	20.0	17.0	22.5	40.5												
18	4.0	8.4	13.9	17.0	21.0	40.0												
19	3.0	6.3	10.6	16.0	22.5	39.5												
20	5.0	15.2	22.9	17.0	22.5	40.0												
21	8.0	14.7	24.8	17.0	22.0	38.5												
22	6.0	16.0	23.1	16.5	22.0	39.0												
23	7.0	12.8	22.7	16.5	22.0	38.0												
24	11.0	17.1	24.5	17.0	22.0	39.0												
25	4.0	8.3	16.6	17.0	20.0	39.0												
26	8.0	16.9	26.2	17.0	22.5	37.5												
27	6.0	11.6	23.1	18.0	22.5	38.5												
28	8.0	14.4	20.6	31.0	26.5	38.5												
29	3.0	9.5	15.2	30.0	29.5	38.5												
30	6.0	11.7	21.8	29.5	28.5	37.5												
31	11.0	17.0	40.0	27.5	30.5	38.5												
Total																		
Mean				19	23	39.9												
Extreme	14.0	29.6	43.3	31	30.5	42												
Date	16	16	16	14	15	18												

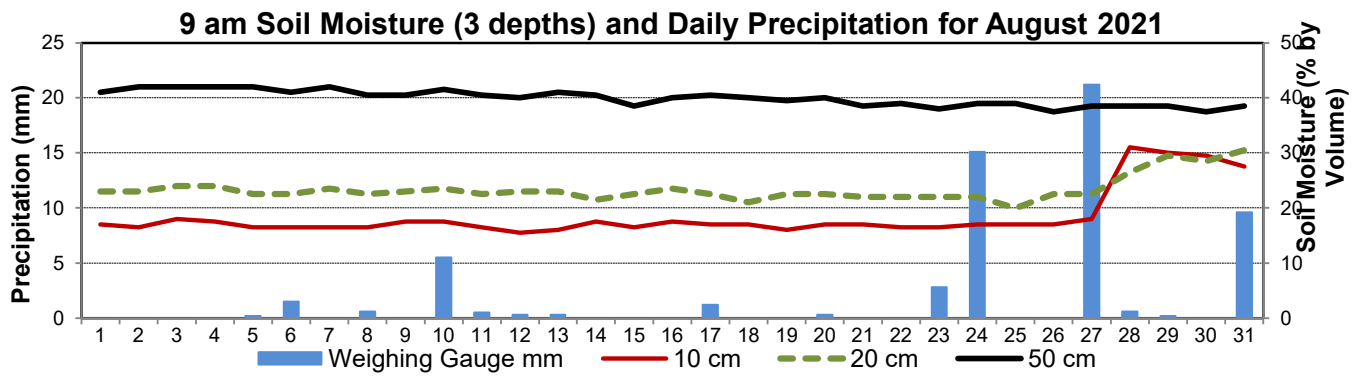
**SRC proudly recognizes the following CRS supporters:**



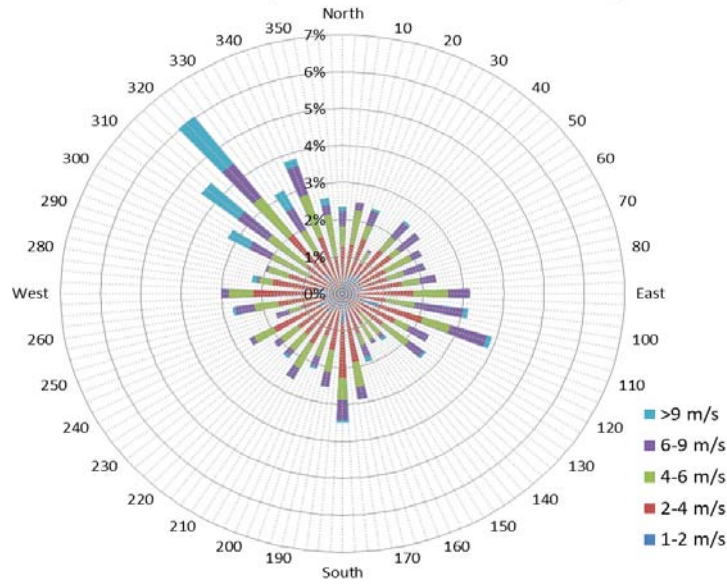
Agriculture and  
Agri-Food Canada

Agriculture et  
Agroalimentaire Canada

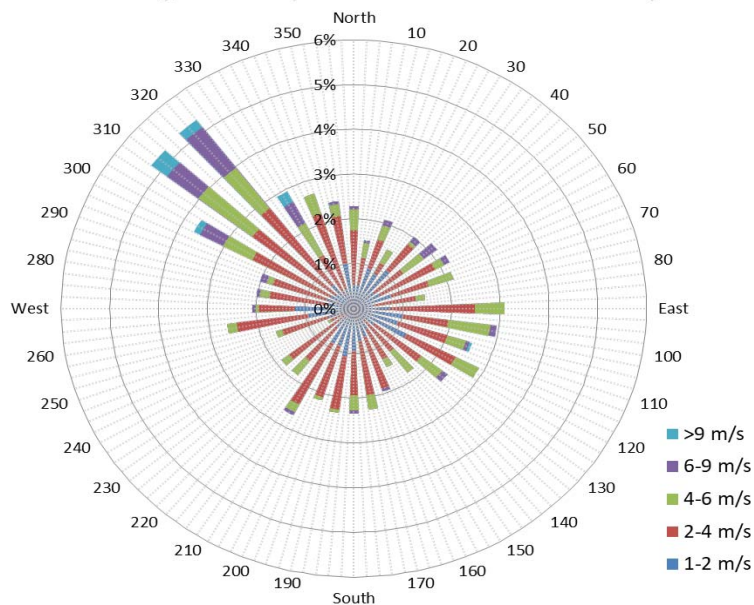




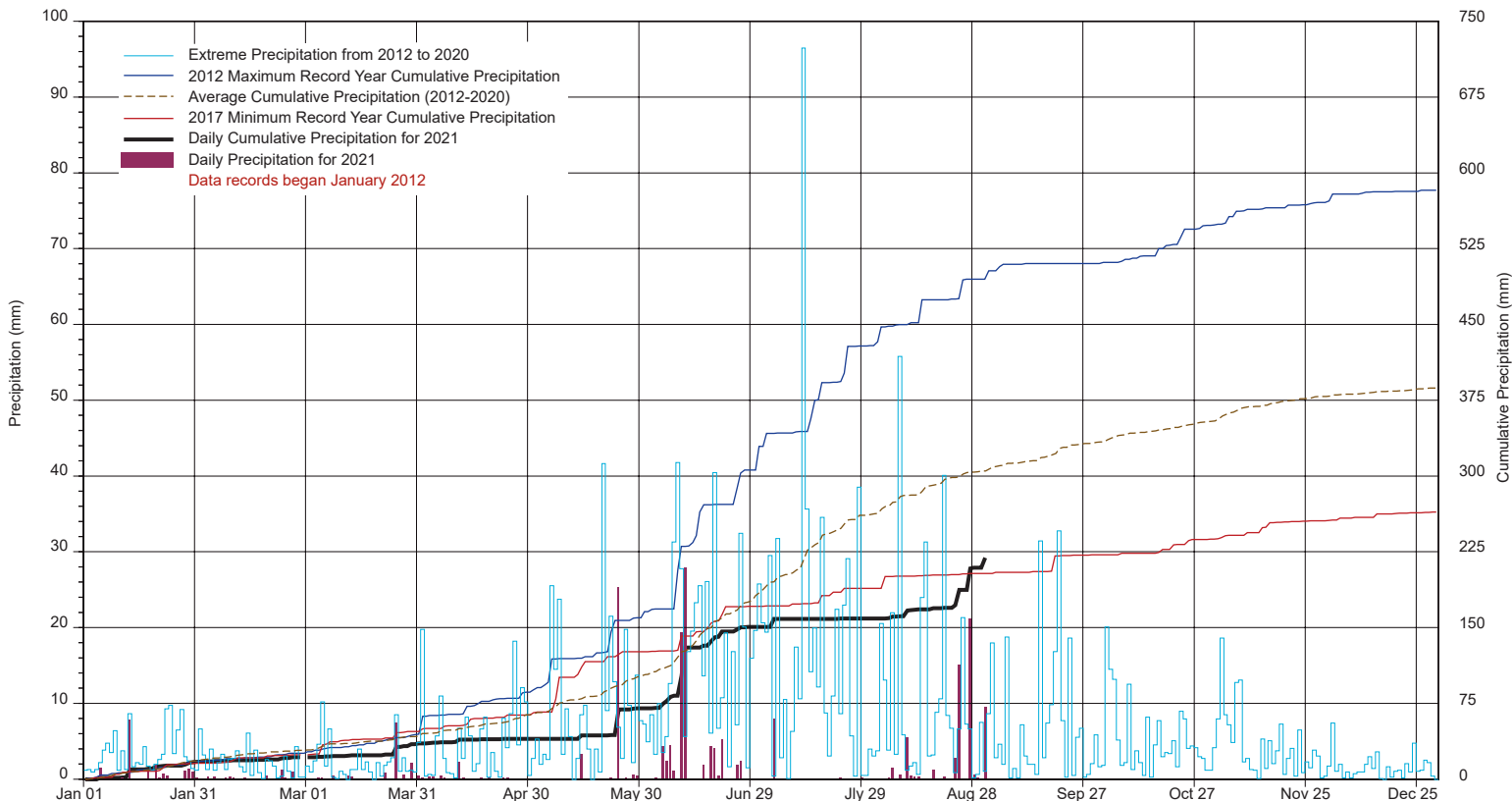
### 1/2 hr Maximum Wind Speed and Direction CLC August 2021



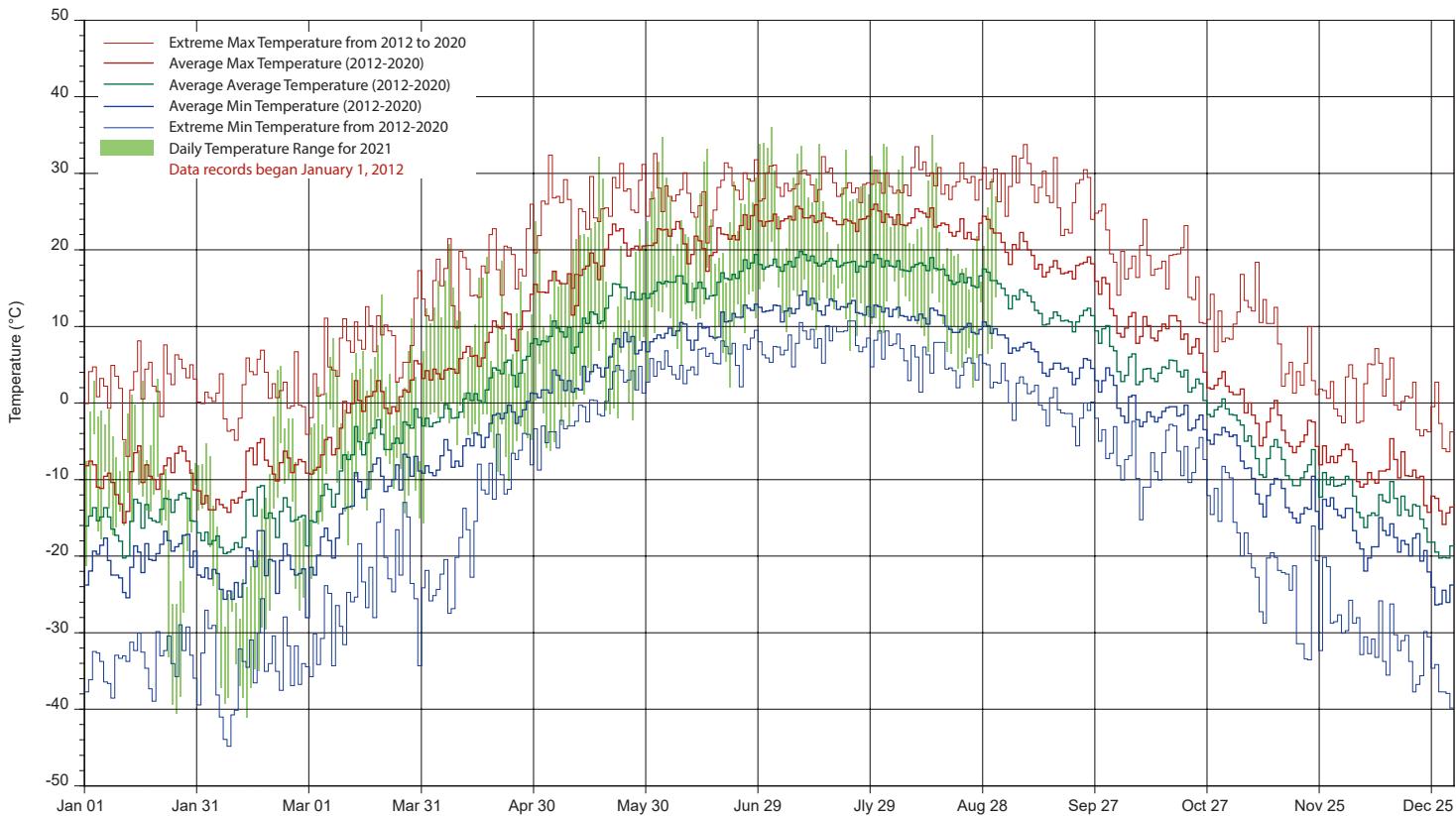
### 10 minute Average Wind Speed and Direction CLC August 2021



# SRC's CLIMATE REFERENCE STATION at the Conservation Learning Centre 2021 PRECIPITATION AND AVERAGE



## 2021 TEMPERATURES AND AVERAGES



SRC proudly recognizes the following CRS supporters:

