



SRC CLIMATE REFERENCE STATION DAILY DATA REPORT

CONSERVATION LEARNING CENTRE

Saskatchewan 53.03°N 105.77°W 451m asl Estab. 2011

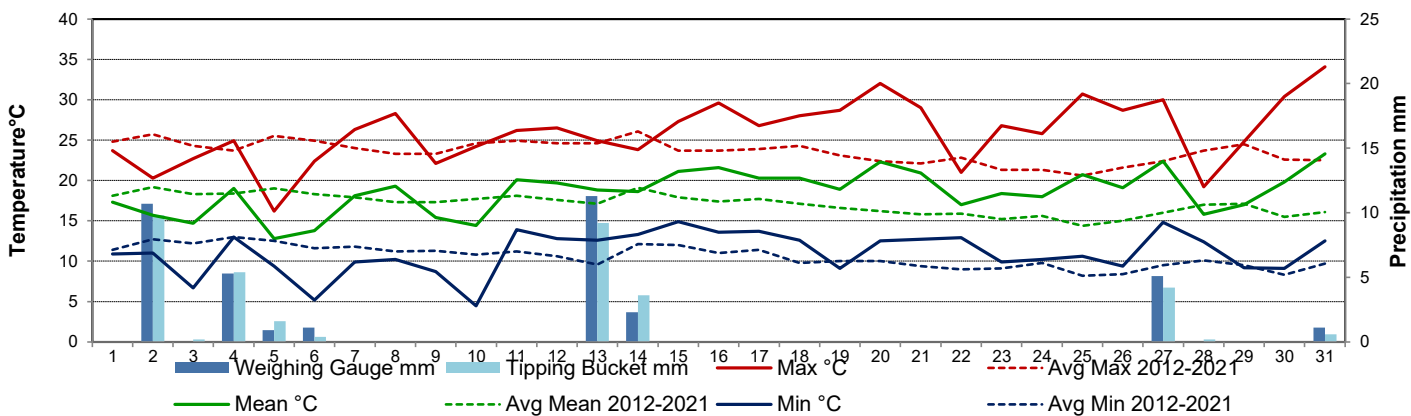
Preliminary **August 2022**

Day	Temperature						Degree-days			Precipitation			Relative Humidity		Station Pressure <i>corrected to sea level</i>	
	Max	Avg Max	Min	Avg Min	Mean	Avg Mean	Growing	Heating	Cooling	Weighing Gauge	Tipping Bucket	Notes	Max ½ hr Avg	Min ½ hr Avg	Max ½ hr Avg	Min ½ hr Avg
	°C	2012-2021	°C	2012-2021	°C	2012-2021	5°C base	18°C base	18°C base	mm	mm		%	%	mbar	mbar
1	23.7	24.8	10.9	11.4	17.3	18.1	12.3	0.7	0.0	0.0	0.0		99	46	1013	1004
2	20.3	25.7	11.0	12.7	15.7	19.2	10.7	2.3	0.0	10.7	9.8		99	79	1008	996
3	22.7	24.3	6.7	12.2	14.7	18.3	9.7	3.3	0.0	0.0	0.2		100	54	1011	1008
4	24.9	23.7	13.0	13.0	19.0	18.4	14.0	0.0	1.0	5.3	5.4		98	68	1008	998
5	16.2	25.5	9.4	12.5	12.8	19.0	7.8	5.2	0.0	0.9	1.6		97	77	1017	1001
6	22.4	24.9	5.2	11.6	13.8	18.3	8.8	4.2	0.0	1.1	0.4		100	43	1018	1014
7	26.3	24.0	9.9	11.8	18.1	17.9	13.1	0.0	0.1	0.0	0.0		99	49	1014	1010
8	28.3	23.3	10.2	11.2	19.3	17.3	14.3	0.0	1.3	0.0	0.0		100	46	1013	1008
9	22.1	23.3	8.7	11.3	15.4	17.3	10.4	2.6	0.0	0.0	0.0		100	51	1022	1013
10	24.2	24.6	4.5	10.8	14.4	17.7	9.4	3.6	0.0	0.0	0.0		100	49	1025	1020
11	26.2	24.9	13.9	11.2	20.1	18.1	15.1	0.0	2.1	0.0	0.0		93	56	1020	1014
12	26.5	24.6	12.8	10.6	19.7	17.6	14.7	0.0	1.7	0.0	0.0		99	70	1016	1014
13	24.9	24.6	12.6	9.6	18.8	17.1	13.8	0.0	0.8	11.3	9.2		100	79	1016	1011
14	23.8	26.1	13.3	12.1	18.6	19.1	13.6	0.0	0.6	2.3	3.6		100	71	1014	1008
15	27.3	23.7	14.9	12.0	21.1	17.9	16.1	0.0	3.1	0.0	0.0		100	55	1016	1014
16	29.6	23.7	13.6	11.0	21.6	17.4	16.6	0.0	3.6	0.0	0.0		100	49	1016	1014
17	26.8	23.9	13.7	11.4	20.3	17.7	15.3	0.0	2.3	0.0	0.0		99	57	1017	1014
18	28.0	24.3	12.6	9.8	20.3	17.1	15.3	0.0	2.3	0.0	0.0		100	43	1018	1017
19	28.7	23.1	9.1	10.0	18.9	16.6	13.9	0.0	0.9	0.0	0.0		100	43	1019	1015
20	32.0	22.4	12.5	10.0	22.3	16.2	17.3	0.0	4.3	0.0	0.0		99	33	1015	1011
21	29.0	22.1	12.7	9.4	20.9	15.8	15.9	0.0	2.9	0.0	0.0		95	55	1017	1012
22	21.0	22.8	12.9	9.0	17.0	15.9	12.0	1.0	0.0	0.0	0.0		100	82	1018	1016
23	26.8	21.3	9.9	9.1	18.4	15.2	13.4	0.0	0.4	0.0	0.0		100	43	1020	1016
24	25.8	21.3	10.2	9.8	18.0	15.6	13.0	0.0	0.0	0.0	0.0		100	54	1023	1020
25	30.7	20.6	10.6	8.2	20.7	14.4	15.7	0.0	2.7	0.0	0.0		100	36	1020	1014
26	28.7	21.6	9.4	8.4	19.1	15.0	14.1	0.0	1.1	0.0	0.0		100	38	1014	1001
27	30.0	22.4	14.8	9.5	22.4	16.0	17.4	0.0	4.4	5.1	4.2		99	46	1001	992
28	19.2	23.7	12.4	10.1	15.8	17.0	10.8	2.2	0.0	0.0	0.2		100	76	1004	993
29	24.8	24.5	9.2	9.5	17.0	17.1	12.0	1.0	0.0	0.0	0.0		98	42	1013	1004
30	30.4	22.6	9.1	8.3	19.8	15.5	14.8	0.0	1.8	0.0	0.0		99	37	1015	1013
31	34.1	22.5	12.5	9.7	23.3	16.1	18.3	0.0	5.3	1.1	0.6		99	28	1014	1007
Total							419.6	26.1	42.7	37.8	35.2					
Avg	26.0	23.6	11.0	10.6	18.5	17.1	Monthly 2012 - 2021 Average			43.0	2012-2021 Average					
Extreme	34.1	35.0	4.5	1.4			374.8	56.7	28.5	245.3	2022 Cumulative ppt		100	28	1025	992
Date	31	2021	10	2019						295.3	Cumulative Average		3	31	10	27

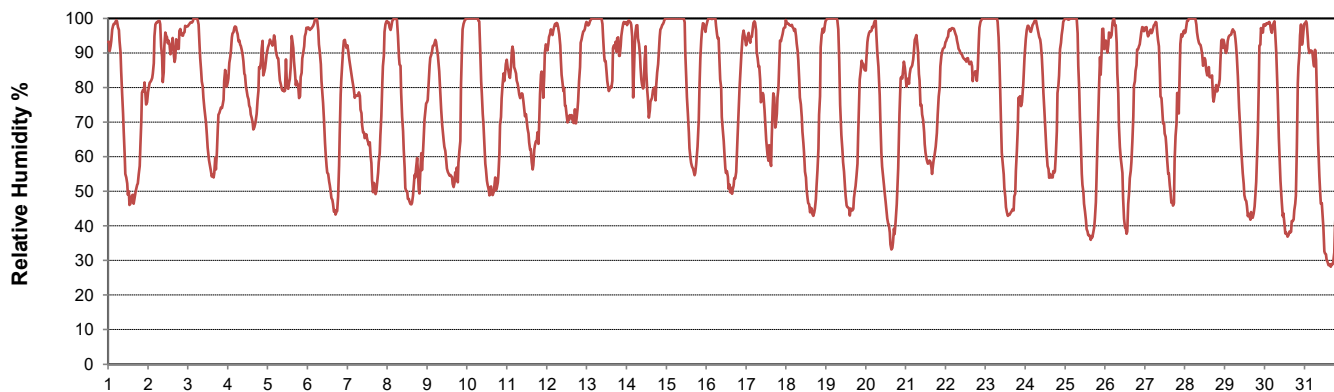
SRC proudly recognizes the following CRS supporters:



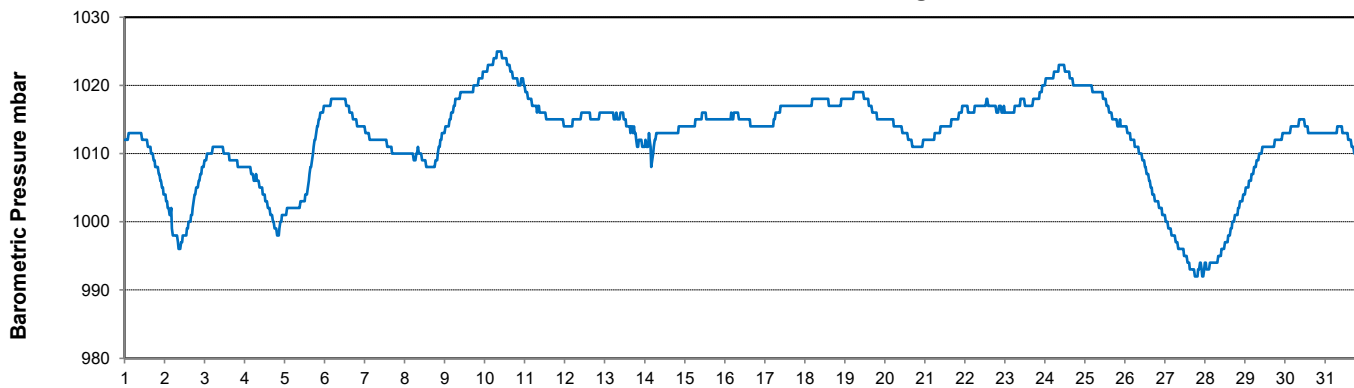
Temperature and Precipitation for August 2022



Relative Humidity for August 2022



Barometric Pressure Corrected to Sea Level for August 2022





SRC CLIMATE REFERENCE STATION DAILY DATA REPORT

CONSERVATION LEARNING CENTRE

Saskatchewan 53.03°N 105.77°W 451m asl Estab. 2011

Preliminary

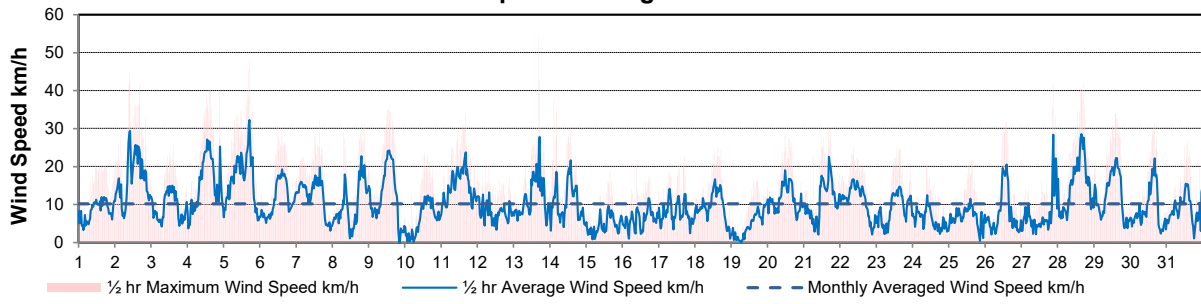
August 2022

Day	Wind Gust (10 meter)			Wind Speed (10 meter)	Soil Temperatures at 0900hrs								Radiation				
	Max	Direction	Time	Daily Average	Surface	5 cm	10 cm	20 cm	50 cm	100 cm	150 cm	300 cm	Bright Sunshine	Possible	% Possible	Global	Diffuse
	km/h			km/h	°C	°C	°C	°C	°C	°C	°C	°C	hours	hours		MJ/m ²	MJ/m ²
1	20.7	SSE	11:03	8.5	16.5	16.0	17.0	16.5	15.5	13.0	10.5	6.0	14.1	15.6	90.4	25.8	3.4
2	44.6	WNW	9:55	17.1	18.5	16.5	17.5	16.5	15.5	13.0	10.5	6.0	1.7	15.5	10.9	10.5	8.2
3	26.2	SSW	14:31	9.5	16.0	14.5	16.0	16.0	15.0	13.0	10.5	6.0	11.2	15.5	72.4	22.3	7.3
4	40.2	ESE	14:53	15.6	16.0	16.0	17.0	16.5	15.0	13.0	11.0	6.5	9.3	15.4	60.3	19.7	9.2
5	47.7	NNW	17:14	17.0	15.5	16.0	17.0	16.5	15.0	12.5	10.5	6.0	5.6	15.4	36.4	11.2	8.3
6	30.7	SW	11:49	11.3	14.5	13.5	15.0	15.0	15.0	13.0	11.0	6.5	14.0	15.3	91.4	25.0	4.0
7	32.1	W	15:59	12.3	17.0	15.0	16.0	15.5	15.0	13.0	11.0	6.5	11.1	15.3	72.8	20.0	8.1
8	31.4	NW	19:07	9.9	19.0	15.0	16.0	15.5	15.0	13.0	11.0	6.5	12.8	15.2	84.3	21.3	7.2
9	36.1	NW	13:54	12.4	16.0	15.0	16.5	16.0	15.0	13.0	11.0	6.5	13.7	15.1	90.5	24.1	4.4
10	23.8	SE	13:02	6.4	14.0	14.0	15.5	15.5	15.0	13.0	11.0	6.5	13.6	15.1	90.2	23.4	4.8
11	33.9	SSW	16:12	14.9	18.0	15.5	16.5	15.5	15.0	13.0	11.0	6.5	5.6	15.0	37.3	14.9	10.5
12	20.7	S	7:53	7.9	17.5	16.0	16.5	16.0	15.0	13.0	11.0	6.5	8.3	14.9	55.6	16.7	9.0
13	53.8	N	16:51	12.1	17.0	16.5	17.0	16.5	15.0	13.0	11.0	7.0	1.8	14.9	12.1	9.8	7.5
14	37.5	WSW	2:47	10.6	18.0	16.0	17.0	16.0	15.0	13.0	11.0	6.5	6.2	14.8	41.8	14.1	8.0
15	18.7	NNW	15:33	4.4	17.5	17.0	17.5	16.5	15.0	13.0	11.0	7.0	8.4	14.8	56.9	18.4	5.1
16	20.7	SSW	9:09	6.2	19.0	17.0	17.5	16.5	15.5	13.0	11.0	7.0	12.3	14.7	83.7	21.7	3.7
17	22.8	NW	17:19	7.8	19.0	17.5	18.5	17.5	15.5	13.0	11.5	7.0	8.5	14.6	58.1	15.1	6.3
18	24.9	N	14:49	9.6	18.5	16.5	17.5	17.0	16.0	13.5	11.5	7.0	13.8	14.6	94.8	22.4	3.4
19	16.9	S	14:57	4.8	17.0	15.5	17.0	16.5	16.0	13.5	11.5	7.0	13.6	14.5	93.8	22.1	3.1
20	28.7	S	11:53	11.6	20.0	16.5	17.5	17.0	16.0	13.5	11.5	7.0	13.4	14.4	92.9	21.5	3.9
21	30.4	NE	16:34	10.9	18.5	16.5	17.5	17.0	16.0	13.5	11.5	7.0	10.1	14.4	70.3	18.6	5.8
22	25.3	E	8:42	11.2	18.5	17.5	18.5	17.0	16.0	13.5	11.5	7.0	1.1	14.3	7.7	4.5	4.0
23	25.1	NNE	13:56	9.0	16.0	15.5	16.5	16.5	16.0	13.5	11.5	7.5	13.0	14.2	91.3	20.6	3.9
24	20.8	E	9:30	6.0	14.0	16.0	17.0	16.5	15.5	13.5	11.5	7.5	9.3	14.2	65.6	17.3	6.4
25	21.7	WSW	15:25	6.9	17.5	15.5	16.5	16.0	15.5	13.5	11.5	7.5	12.5	14.1	88.6	19.3	4.9
26	32.0	S	14:04	8.1	17.5	15.0	16.5	16.0	15.5	13.5	11.5	7.5	8.5	14.0	60.5	15.5	4.5
27	41.7	WSW	21:10	7.8	17.5	16.5	17.5	16.5	15.5	13.5	11.5	7.5	9.4	14.0	67.3	17.7	5.1
28	41.8	NNW	17:27	15.2	17.0	16.5	17.5	16.5	15.5	13.5	11.5	7.5	2.1	13.9	15.1	6.4	5.5
29	34.0	NW	14:35	12.2	14.5	14.5	16.0	16.0	15.5	13.5	12.0	7.5	12.8	13.8	92.5	19.8	3.0
30	31.5	NW	16:07	8.7	17.0	14.5	15.5	15.5	15.5	13.5	12.0	7.5	13.3	13.8	96.6	19.5	3.4
31	33.3	NNW	23:08	8.8	20.5	15.0	16.0	15.5	15.0	13.5	12.0	7.5	12.9	13.7	94.1	19.3	3.0
Total													304.0	455.0	66.8	558.5	174.9
Mean				10.2	17.2	15.8	16.8	16.2	15.4	13.2	11.2	6.9					
Extreme	53.8	N	16:51														
Date	13																

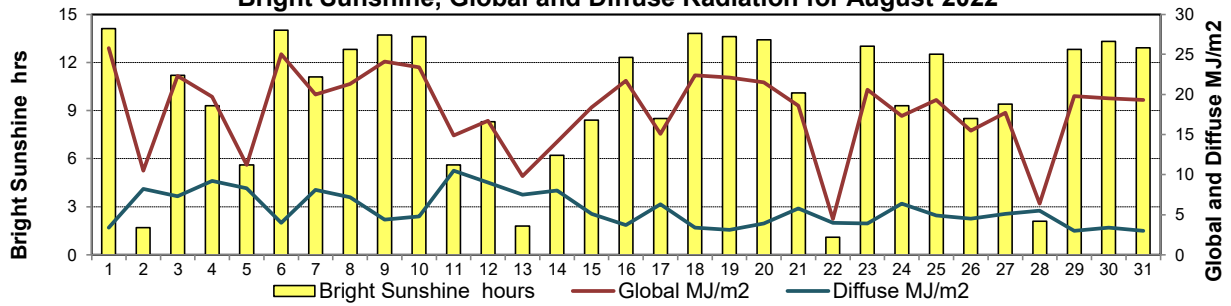
GLOSSARY OF TERMS

Degree-days	Radiation
T_m Mean Temperature	Bright Sunshine is the unobstructed direct radiation from the sun, as opposed to the shading of a location by clouds or by other atmospheric obstructions.
Growing (T _m -5°C); if T _m ≤ 5°C then GDD = 0	
Heating (18°C-T _m); if T _m ≥ 18°C then HDD = 0	
Cooling (T _m -18°C); if T _m ≤ 18°C then CDD = 0	Diffuse is radiation reaching the earth's surface after having been scattered from the direct solar beam
T Trace of Precipitation	Global is the sum of the direct solar and diffuse radiation
SOG Depth of snow-on-the-ground	Relative Humidity The ratio of the air's water vapour content of its water vapour capacity which changes with temperature.
Red Cell no data available	Air Pressure The force exerted by the weight of a column of air above a given point
Red Number manual calculation	Wind Gust The daily highest instantaneous value recorded irrespective of direction and/or duration

Wind Speed for August 2022

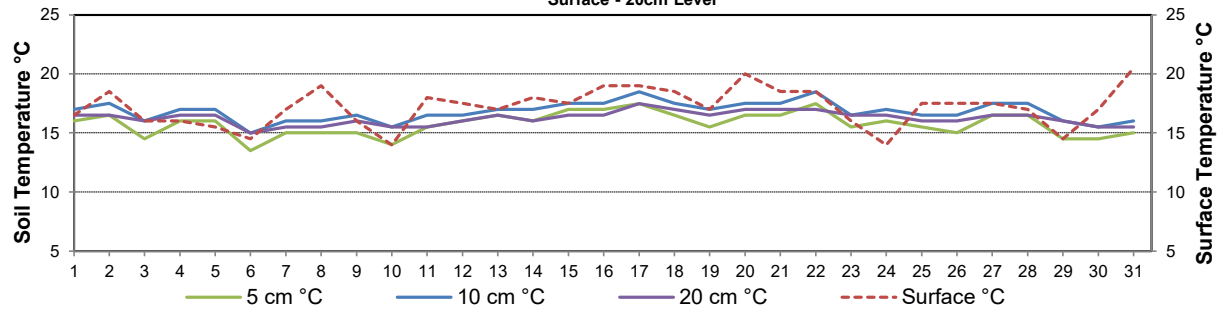


Bright Sunshine, Global and Diffuse Radiation for August 2022



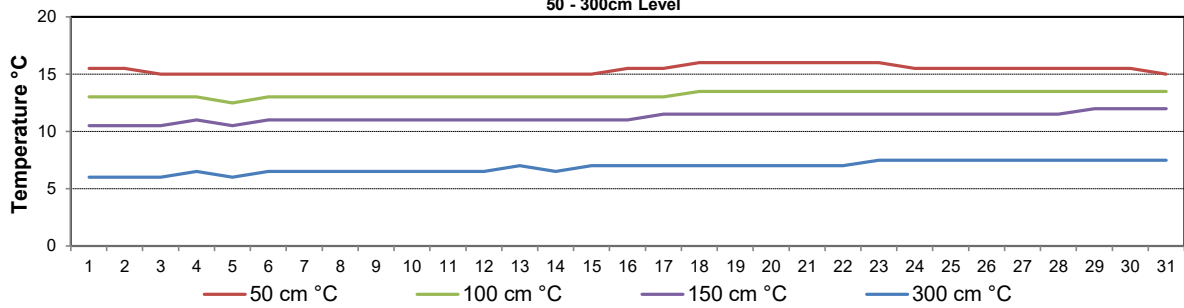
Soil Temperatures for August 2022

Surface - 20cm Level



Soil Temperatures for August 2022

50 - 300cm Level





SRC CLIMATE REFERENCE STATION DAILY DATA REPORT
CONSERVATION LEARNING CENTRE

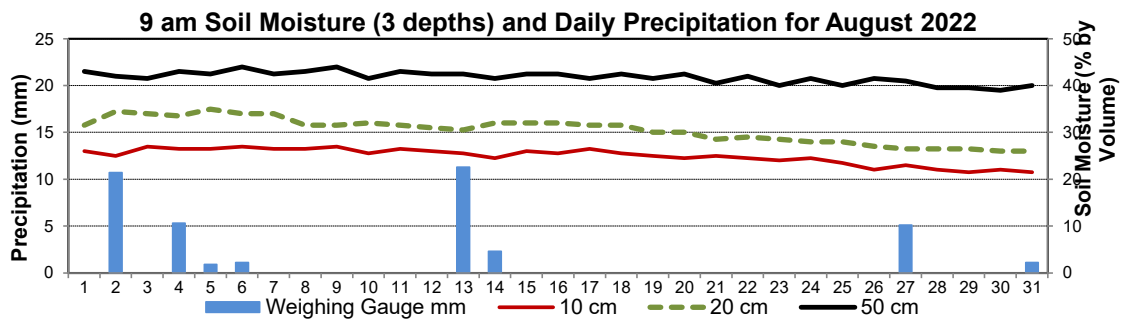
Saskatchewan 53.03°N 105.77°W 451m asl Estab. 2011

August 2022

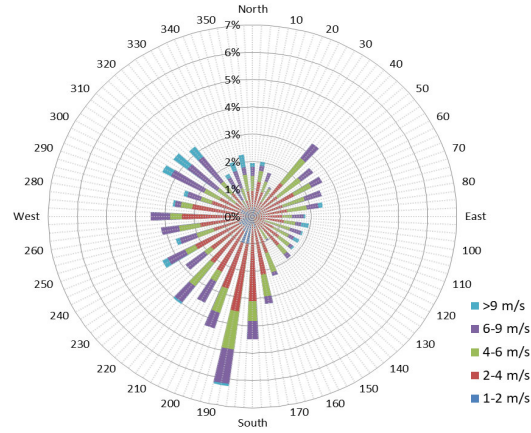
Day	2 meter Wind Speed			Soil Moisture at 0900 hrs (rounded to the 0.5%)														
	Daily Average	Max ½ hr Avg	½ hr Extreme Max	10 cm	20 cm	50 cm												
	km/h	km/h	km/h	% by volume (soil type is Clay Loam)														
1	1.0	6.9	16.6	26.0	31.5	43.0												
2	10.0	19.1	31.0	25.0	34.5	42.0												
3	4.0	9.8	17.7	27.0	34.0	41.5												
4	9.0	18.1	28.9	26.5	33.5	43.0												
5	10.0	21.6	30.8	26.5	35.0	42.5												
6	6.0	12.6	21.4	27.0	34.0	44.0												
7	6.0	12.6	21.8	26.5	34.0	42.5												
8	3.0	13.9	22.0	26.5	31.5	43.0												
9	6.0	15.6	23.7	27.0	31.5	44.0												
10	1.0	6.1	16.0	25.5	32.0	41.5												
11	6.0	14.2	23.9	26.5	31.5	43.0												
12	1.0	7.2	14.5	26.0	31.0	42.5												
13	5.0	19.0	38.1	25.5	30.5	42.5												
14	5.0	15.8	21.8	24.5	32.0	41.5												
15	0.0	2.5	12.0	26.0	32.0	42.5												
16	1.0	5.9	14.7	25.5	32.0	42.5												
17	2.0	9.2	16.4	26.5	31.5	41.5												
18	3.0	11.4	17.9	25.5	31.5	42.5												
19	0.0	4.3	13.3	25.0	30.0	41.5												
20	3.0	11.1	18.7	24.5	30.0	42.5												
21	5.0	14.1	21.2	25.0	28.5	40.5												
22	6.0	12.5	20.6	24.5	29.0	42.0												
23	3.0	8.9	18.1	24.0	28.5	40.0												
24	1.0	4.8	14.3	24.5	28.0	41.5												
25	1.0	5.3	15.8	23.5	28.0	40.0												
26	2.0	11.8	20.6	22.0	27.0	41.5												
27	2.0	18.3	27.2	23.0	26.5	41.0												
28	8.0	16.8	27.5	22.0	26.5	39.5												
29	7.0	13.5	23.3	21.5	26.5	39.5												
30	4.0	13.1	20.4	22.0	26.0	39.0												
31	2.0	20.0	22.0	21.5	26.0	40.0												
Total																		
Mean				25	31	41.7												
Extreme	10.0	21.6	38.1	27	35	44												
Date	16.5	16	16.5	16	16	15.5												

SRC proudly recognizes the following CRS supporters:

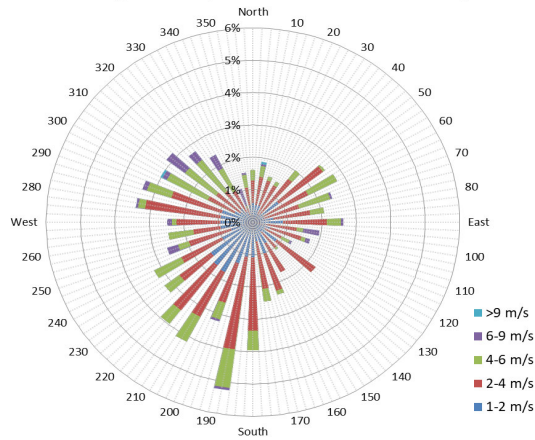




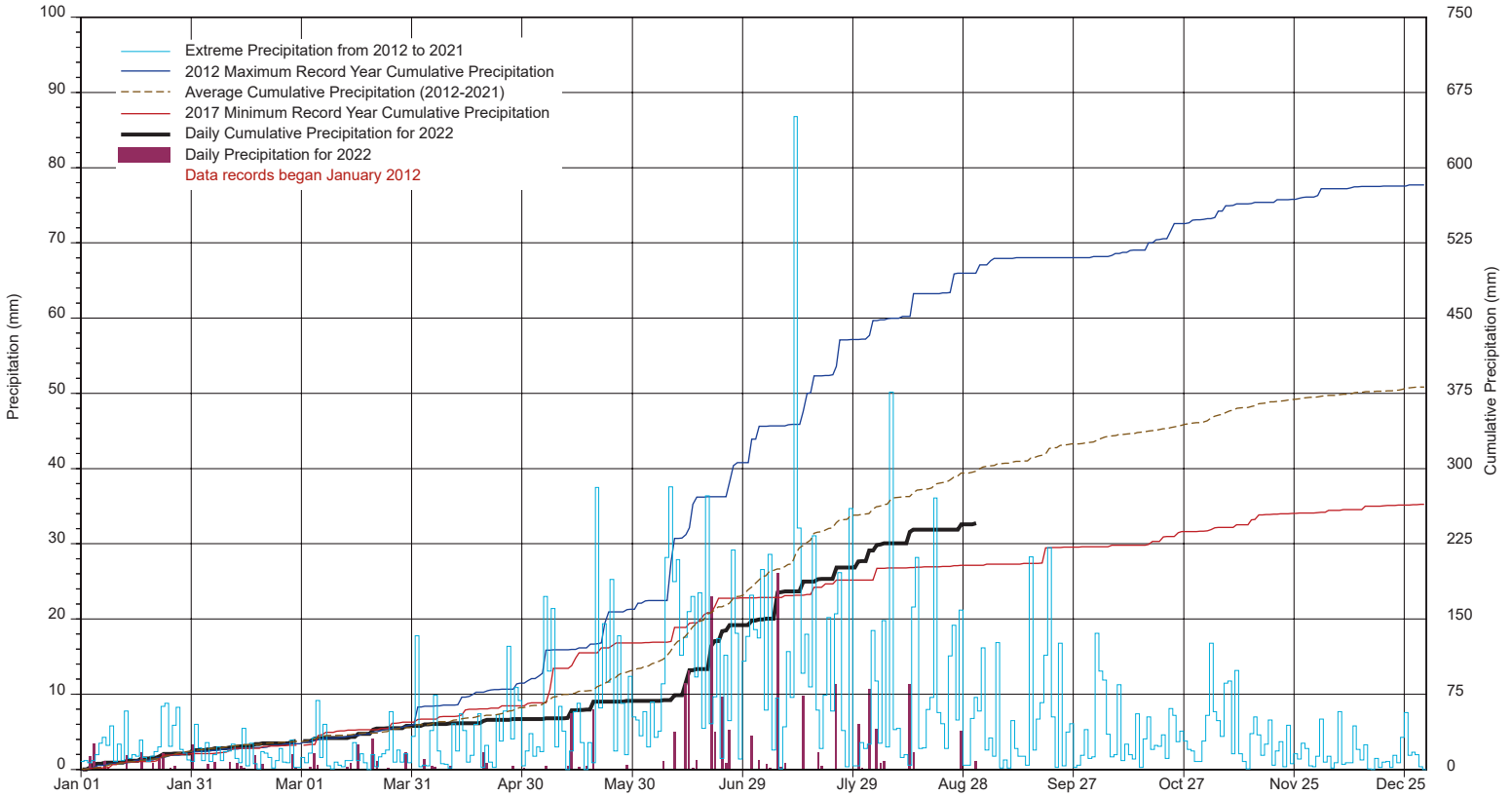
1/2 hr Maximum Wind Speed and Direction CLC August 2022



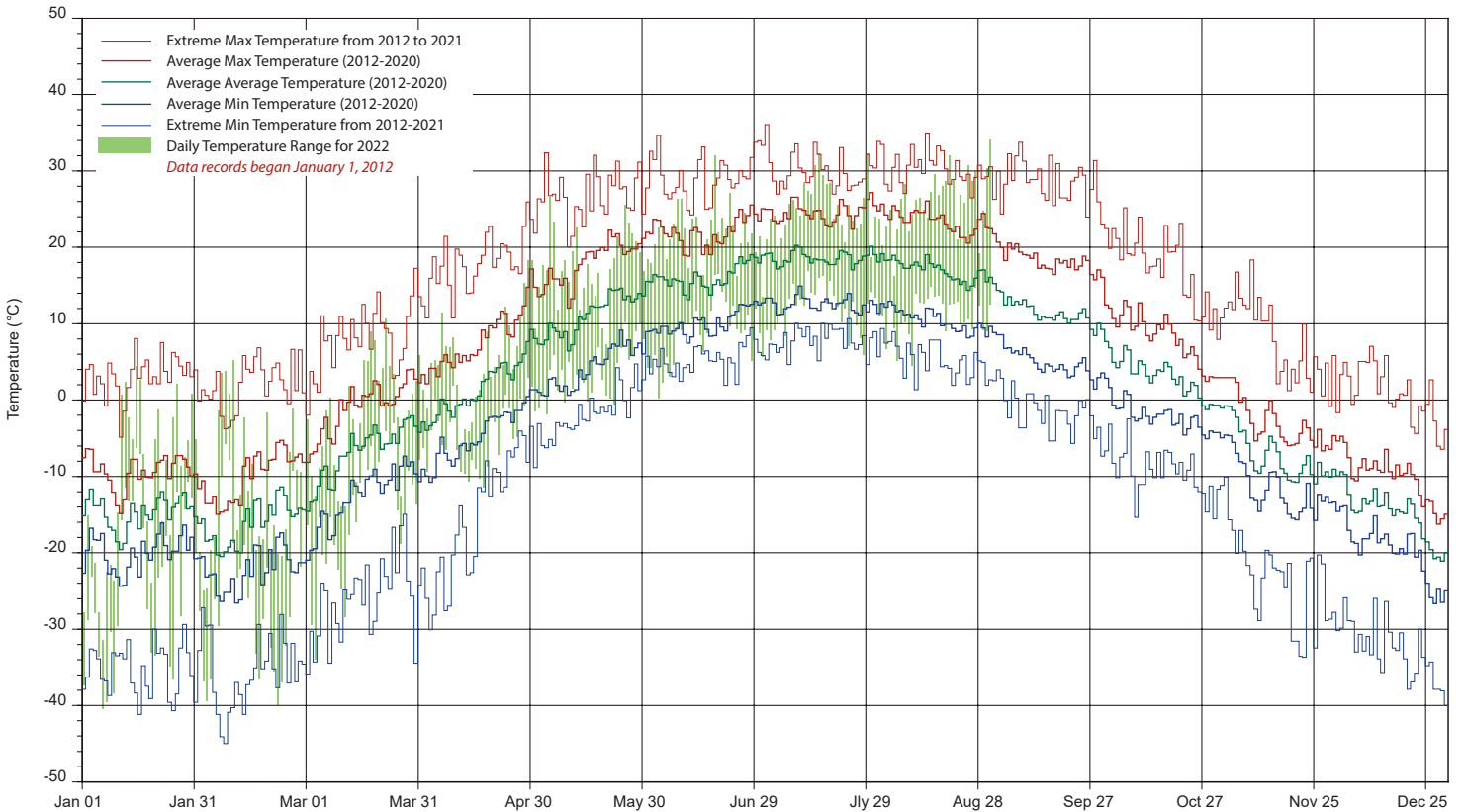
10 minute Average Wind Speed and Direction CLC August 2022



SRC's CLIMATE REFERENCE STATION at the Conservation Learning Centre 2022 PRECIPITATION AND AVERAGE



2022 TEMPERATURES AND AVERAGES



SRC proudly recognizes the following CRS supporters:

