



SRC CLIMATE REFERENCE STATION DAILY DATA REPORT

CONSERVATION LEARNING CENTRE

Saskatchewan 53.03°N 105.77°W 451m asl Estab. 2011

Preliminary **August 2024**

Day	Temperature (HMP155A)						Degree-days			Precipitation			Relative Humidity (HMP115A)		Station Pressure <i>corrected to sea level</i>	
	Max	Avg Max	Min	Avg Min	Mean	Avg Mean	Growing	Heating	Cooling	Geonor all-season ppt Gauge	Tipping Bucket	Notes	Max ½ hr Avg	Min ½ hr Avg	Max ½ hr Avg	Min ½ hr Avg
	°C	2012-2021	°C	2012-2021	°C	2012-2021	5°C base	18°C base	18°C base	mm	mm		%	%	mbar	mbar
1	25.1	24.8	10.7	11.4	17.9	18.1	12.9	0.1	0.0	0.0	0.0		92	36	1019	1007
2	26.4	25.7	6.6	12.7	16.5	19.2	11.5	1.5	0.0	0.0	0.0		98	40	1020	1017
3	21.6	24.3	2.2	12.2	11.9	18.3	6.9	6.1	0.0	0.0	0.0		97	43	1022	1017
4	23.7	23.7	9.2	13.0	16.5	18.4	11.5	1.5	0.0	0.0	0.0		91	45	1020	1017
5	19.2	25.5	5.6	12.5	12.4	19.0	7.4	5.6	0.0	2.6	3.0		95	64	1022	1018
6	19.0	24.9	8.9	11.6	14.0	18.3	9.0	4.0	0.0	3.6	4.2		97	57	1019	1015
7	17.3	24.0	4.3	11.8	10.8	17.9	5.8	7.2	0.0	0.0	0.0		92	43	1025	1020
8	19.8	23.3	0.6	11.2	10.2	17.3	5.2	7.8	0.0	0.0	0.0		98	41	1027	1024
9	21.9	23.3	4.4	11.3	13.2	17.3	8.2	4.8	0.0	0.0	0.0		98	48	1024	1021
10	23.6	24.6	2.7	10.8	13.2	17.7	8.2	4.8	0.0	0.0	0.0		98	42	1022	1018
11	25.0	24.9	1.9	11.2	13.5	18.1	8.5	4.5	0.0	0.0	0.0		98	35	1018	1016
12	27.9	24.6	3.0	10.6	15.5	17.6	10.5	2.5	0.0	0.0	0.0		98	28	1016	1012
13	27.6	24.6	12.8	9.6	20.2	17.1	15.2	0.0	2.2	7.6	8.4		91	46	1011	1007
14	27.1	26.1	11.2	12.1	19.2	19.1	14.2	0.0	1.2	0.0	0.0		97	45	1010	1007
15	23.4	23.7	9.4	12.0	16.4	17.9	11.4	1.6	0.0	0.0	0.0		95	50	1017	1010
16	23.4	23.7	2.6	11.0	13.0	17.4	8.0	5.0	0.0	0.0	0.0		98	40	1019	1017
17	22.1	23.9	5.2	11.4	13.7	17.7	8.7	4.3	0.0	6.6	8.0		97	59	1018	1015
18	25.3	24.3	7.8	9.8	16.6	17.1	11.6	1.4	0.0	3.4	3.4		98	55	1017	1015
19	21.8	23.1	12.4	10.0	17.1	16.6	12.1	0.9	0.0	2.8	3.2		98	76	1017	1012
20	31.9	22.4	11.8	10.0	21.9	16.2	16.9	0.0	3.9	0.0	0.0		96	26	1012	1006
21	28.1	22.1	10.2	9.4	19.2	15.8	14.2	0.0	1.2	0.4	0.4		98	36	1011	1008
22	19.0	22.8	10.3	9.0	14.7	15.9	9.7	3.3	0.0	0.0	0.2		96	72	1015	1010
23	22.9	21.3	10.4	9.1	16.7	15.2	11.7	1.3	0.0	0.1	0.0		94	53	1015	1009
24	26.7	21.3	11.8	9.8	19.3	15.6	14.3	0.0	1.3	7.7	8.6		98	36	1010	1005
25	17.7	20.6	5.0	8.2	11.4	14.4	6.4	6.6	0.0	0.1	0.0		96	57	1019	1006
26	22.5	21.6	2.2	8.4	12.4	15.0	7.4	5.6	0.0	0.0	0.0		98	37	1023	1019
27	27.3	22.4	3.6	9.5	15.5	16.0	10.5	2.5	0.0	0.0	0.0		93	32	1020	1010
28	23.5	23.7	10.0	10.1	16.8	17.0	11.8	1.2	0.0	1.6	2.0		97	47	1011	1008
29	22.0	24.5	8.3	9.5	15.2	17.1	10.2	2.8	0.0	0.5	0.6		98	43	1010	1007
30	23.4	22.6	7.0	8.3	15.2	15.5	10.2	2.8	0.0	0.0	0.0		89	34	1013	1009
31	20.4	22.5	3.3	9.7	11.9	16.1	6.9	6.1	0.0	0.0	0.0		94	38	1021	1012
Total							317.0	95.8	9.8	37.0	42.0		Extreme / Date	Extreme / Date	Extreme / Date	Extreme / Date
Avg	23.4	23.6	6.9	10.6	15.2	17.1	Monthly 2012 - 2021 Average			43.0	2012-2021 Average					
Extreme	31.9	35.0	0.6	1.4			374.8	56.7	28.5	305.1	2024 Cumulative ppt		98	26	1027	1005
Date	20	14/2021	8	11/2019						295.3	Cumulative Average		2	20	8	24

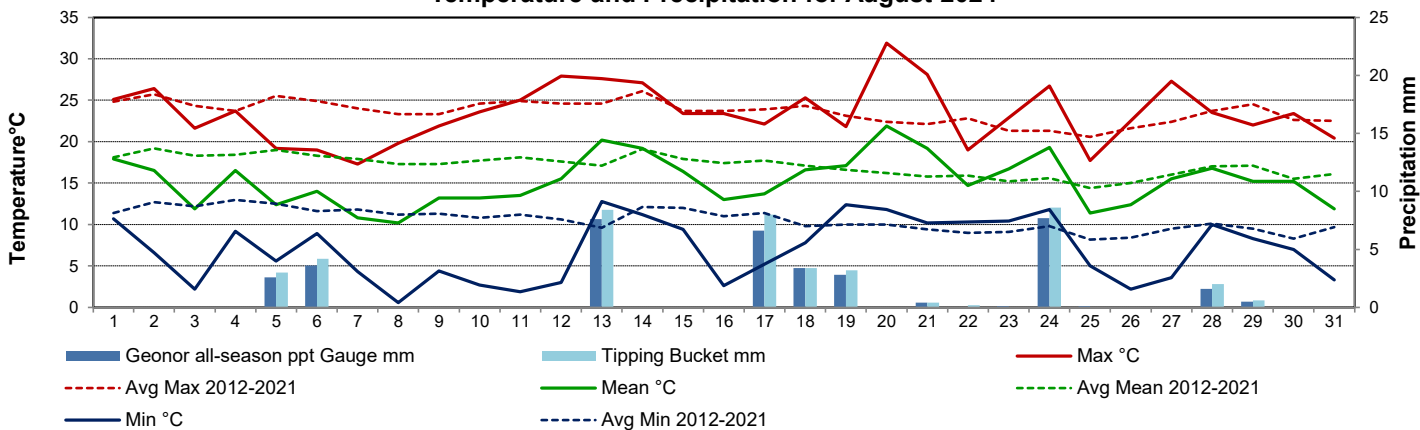
Note: Red numbers indicate manual calculation; Red cell indicate data not available

Precipitation is measured precipitation. It has not been corrected for wind speed.

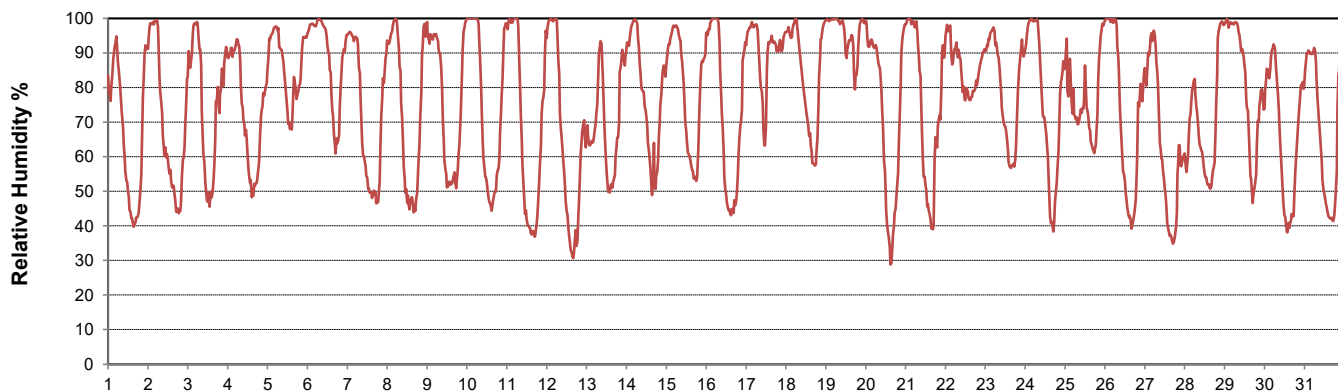
SRC proudly recognizes the following CRS supporters:



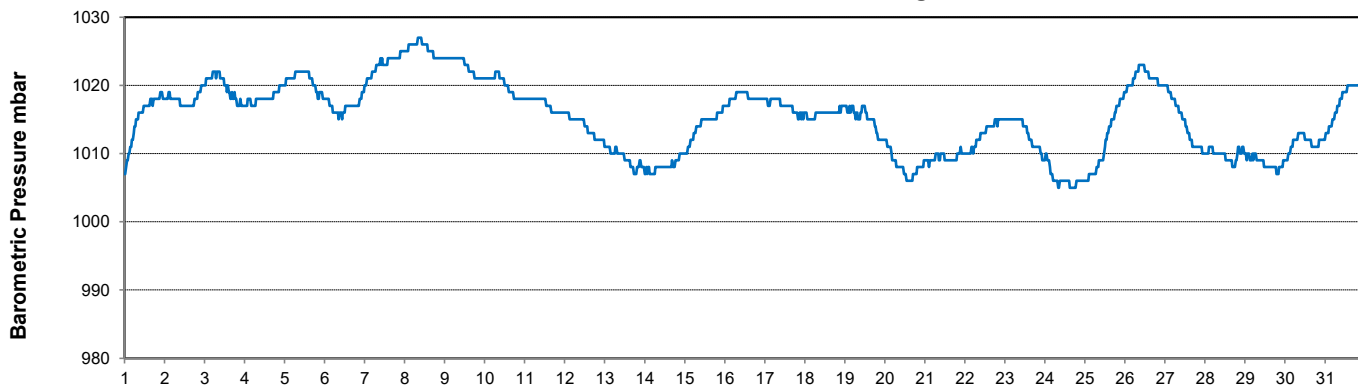
Temperature and Precipitation for August 2024



Relative Humidity for August 2024



Barometric Pressure Corrected to Sea Level for August 2024





SRC CLIMATE REFERENCE STATION DAILY DATA REPORT

CONSERVATION LEARNING CENTRE

Saskatchewan 53.03°N 105.77°W 451m asl Estab. 2011

Preliminary

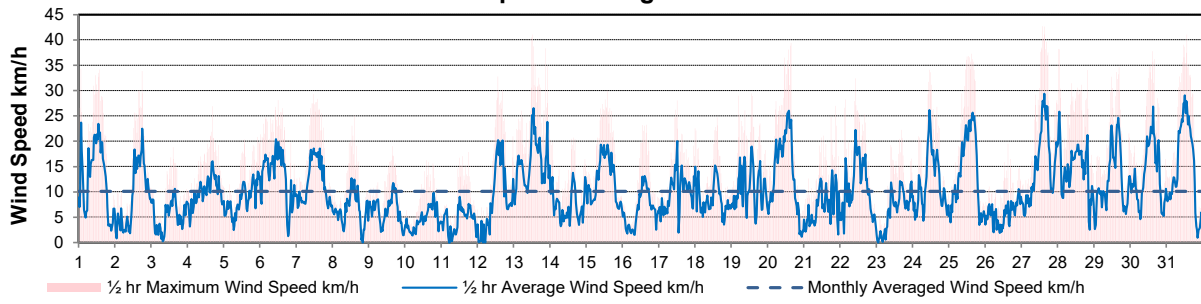
August 2024

Day	Wind Gust (10 meter)			Wind Speed (10 meter)	Soil Temperatures at 0900hrs								Radiation				
	Max	Direction	Time	Daily Average	Surface	5 cm	10 cm	20 cm	50 cm	100 cm	150 cm	300 cm	Bright Sunshine	Possible	% Possible	Global	Diffuse
	km/h			km/h	°C	°C	°C	°C	°C	°C	°C	°C	hours	hours		MJ/m ²	MJ/m ²
1	34.3	NNW	1:43	12.8	19.0	18.0	19.5	18.0	16.5	13.5	11.0	5.5	15.0	15.6	96.3	25.7	3.3
2	33.8	N	18:01	9.2	19.0	17.0	18.5	17.5	17.0	13.5	11.0	5.5	12.2	15.5	78.7	20.0	8.5
3	18.8	ESE	14:45	5.2	14.5	15.5	17.5	17.0	17.0	13.5	11.0	6.0	6.7	15.5	43.4	15.1	7.7
4	26.9	ENE	16:54	10.0	17.5	16.5	18.5	17.0	16.5	13.5	11.0	6.0	11.6	15.4	75.3	22.1	7.6
5	20.8	ESE	23:00	8.6	15.0	16.5	18.0	17.0	16.5	13.5	11.0	6.0	0.6	15.3	3.9	7.9	7.0
6	28.1	NNE	12:18	13.4	13.5	15.5	17.5	16.5	16.0	13.0	11.0	5.5	4.2	15.3	27.5	9.6	7.1
7	29.3	NNE	11:38	11.9	12.0	14.0	16.0	16.0	16.0	13.5	11.0	6.0	12.3	15.2	80.8	22.4	6.4
8	25.1	N	14:41	6.4	13.0	12.5	15.0	15.0	15.5	13.5	11.0	6.0	8.6	15.2	56.7	18.3	7.3
9	19.0	NE	15:55	6.5	13.0	13.0	15.0	15.0	15.0	13.5	11.0	6.0	12.0	15.1	79.5	19.5	7.9
10	16.2	SSE	14:18	4.5	14.5	13.5	15.5	15.0	15.0	13.0	11.5	6.0	12.6	15.0	83.8	20.0	8.0
11	17.8	E	18:12	4.4	14.5	13.5	16.0	15.0	15.0	13.0	11.5	6.5	13.9	15.0	92.9	23.2	3.0
12	32.8	S	13:34	8.3	17.0	14.0	16.0	15.5	15.0	13.0	11.0	6.5	13.6	14.9	91.2	22.1	5.4
13	41.0	SSE	12:53	15.5	16.0	16.5	18.0	16.0	15.5	13.0	11.0	6.5	7.5	14.9	50.5	16.5	6.2
14	20.7	NW	15:56	7.4	18.5	16.5	18.0	16.5	15.5	13.0	11.0	6.5	11.7	14.8	79.1	19.2	6.0
15	30.0	N	14:17	12.5	17.5	17.0	18.5	17.0	16.0	13.0	11.0	6.5	10.5	14.7	71.3	19.1	8.1
16	23.2	E	16:02	6.2	15.0	14.0	16.5	16.0	16.0	13.0	11.0	6.5	12.8	14.7	87.3	20.8	6.5
17	28.0	SSE	12:10	10.0	16.0	15.0	16.5	16.0	15.5	13.0	11.0	6.5	4.3	14.6	29.5	9.0	6.0
18	24.7	E	14:54	8.8	16.5	14.5	16.5	15.5	15.5	13.0	11.0	6.5	13.2	14.5	90.8	20.6	6.2
19	29.4	ESE	13:55	10.9	17.0	16.5	18.0	16.5	15.5	13.0	11.0	6.5	3.8	14.5	26.3	7.0	5.4
20	39.4	SW	15:41	13.8	20.5	16.5	18.0	16.5	15.5	13.0	11.0	6.5	13.4	14.4	93.1	20.0	5.2
21	26.9	WSW	21:22	7.3	19.0	16.5	18.0	17.0	16.0	13.5	11.5	7.0	8.7	14.3	60.7	17.2	5.4
22	32.4	NNE	10:05	10.8	17.5	16.5	18.5	17.0	16.0	13.5	11.5	7.0	4.0	14.3	28.0	10.4	7.8
23	22.2	ESE	16:59	6.4	16.0	16.0	18.0	16.5	16.0	13.5	11.5	7.0	9.9	14.2	69.7	18.3	6.5
24	34.1	SSW	11:22	11.8	19.0	17.0	18.5	17.0	16.0	13.5	11.5	6.5	11.8	14.1	83.5	18.5	5.8
25	37.3	NW	15:11	14.1	16.0	15.0	17.5	17.0	16.0	13.5	11.5	7.0	8.0	14.1	56.9	13.0	6.7
26	19.5	ENE	15:19	5.7	12.5	12.5	15.0	15.0	16.0	13.5	11.5	7.0	13.4	14.0	95.6	20.7	3.0
27	42.7	S	14:00	15.1	15.5	13.0	15.5	15.0	15.5	13.5	11.5	7.0	12.7	13.9	91.1	19.5	4.5
28	38.2	S	0:59	14.7	18.5	15.0	17.0	15.5	15.5	13.5	11.5	7.0	9.4	13.9	67.8	17.5	5.6
29	34.6	NW	16:37	12.3	14.0	15.0	16.5	15.5	15.5	13.0	11.5	6.5	5.5	13.8	39.8	12.1	6.5
30	37.7	W	14:54	13.4	14.5	13.5	16.0	15.0	15.5	13.5	11.5	7.0	8.8	13.7	64.0	15.4	6.5
31	41.0	NNW	13:32	14.7	14.0	13.5	15.5	15.0	15.0	13.5	11.5	7.0	12.8	13.7	93.6	19.3	3.2
Total													305.5	454.0	67.3	540.0	190.3
Mean				10.1	16.0	15.1	17.1	16.1	15.8	13.3	11.2	6.4					
Extreme	42.7	S	14:00														
Date	27																

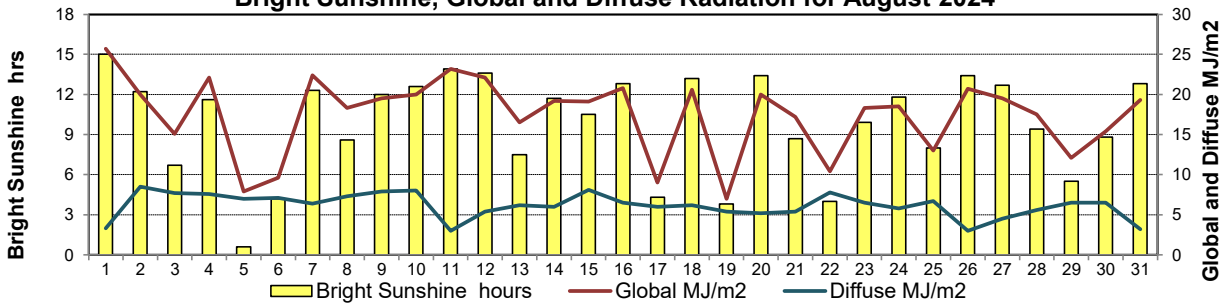
GLOSSARY OF TERMS

Degree-days	Radiation
T_m Mean Temperature	Bright Sunshine is the unobstructed direct radiation from the sun, as opposed to the shading of a location by clouds or by other atmospheric obstructions.
Growing (T _m -5°C); if T _m ≤ 5°C then GDD = 0	
Heating (18°C-T _m); if T _m ≥ 18°C then HDD = 0	
Cooling (T _m -18°C); if T _m ≤ 18°C then CDD = 0	Diffuse is radiation reaching the earth's surface after having been scattered from the direct solar beam
T Trace of Precipitation	Global is the sum of the direct solar and diffuse radiation
SOG Depth of snow-on-the-ground	Relative Humidity The ratio of the air's water vapour content of its water vapour capacity which changes with temperature.
Red Cell no data available	Air Pressure The force exerted by the weight of a column of air above a given point
Red Number manual calculation	Wind Gust The daily highest instantaneous value recorded irrespective of direction and/or duration

Wind Speed for August 2024

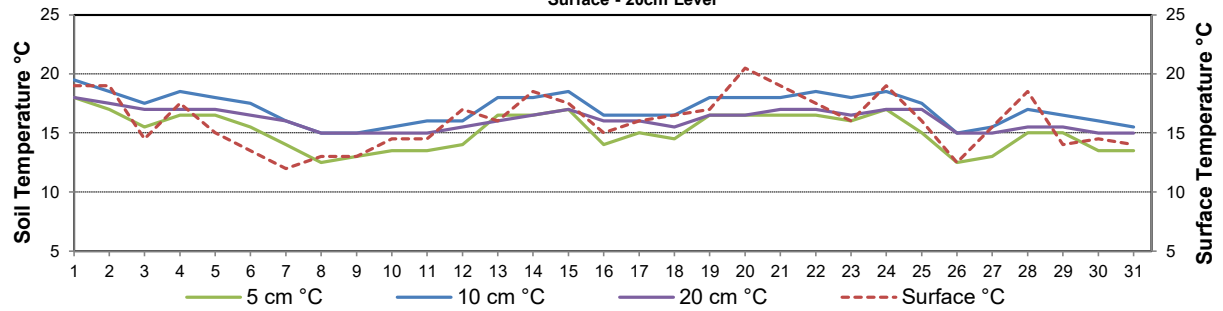


Bright Sunshine, Global and Diffuse Radiation for August 2024



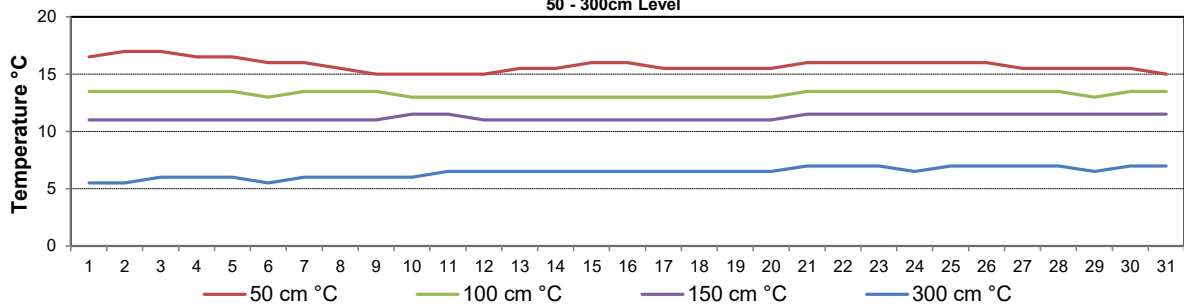
Soil Temperatures for August 2024

Surface - 20cm Level



Soil Temperatures for August 2024

50 - 300cm Level





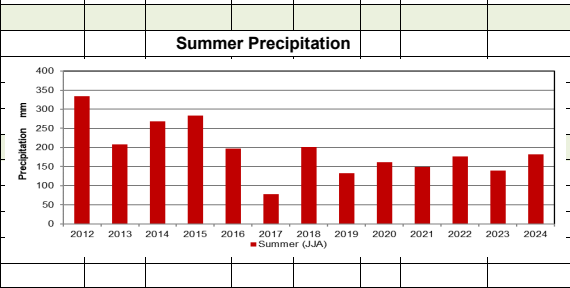
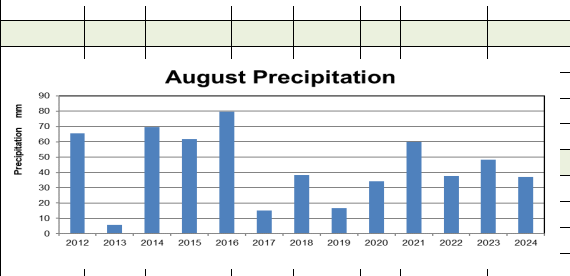
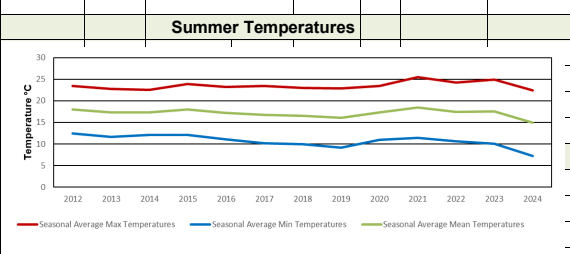
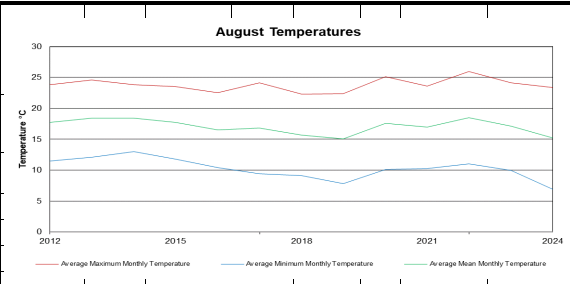
SRC CLIMATE REFERENCE STATION DAILY DATA REPORT

CONSERVATION LEARNING CENTRE

Saskatchewan 53.03°N 105.77°W 451m asl Estab. 2011

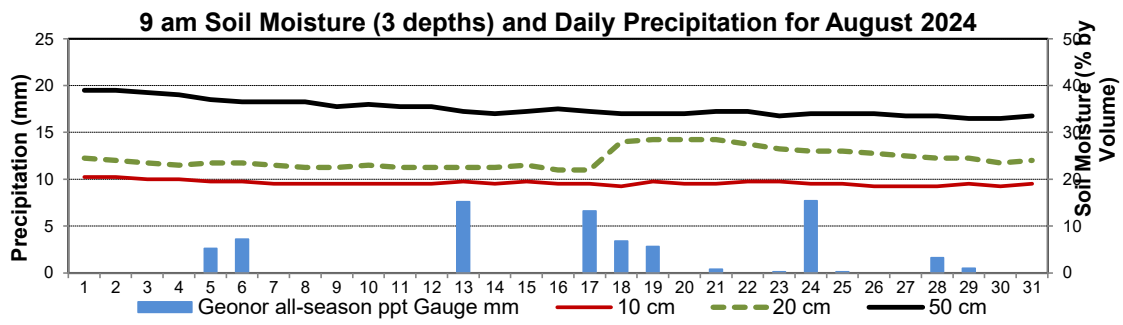
August 2024

Day	2 meter Wind Speed			Soil Moisture at 0900 hrs (rounded to the 0.5%)		
	Daily Average	Max ½ hr Avg	½ hr Extreme Max	10 cm	20 cm	50 cm
	km/h	km/h	km/h	% by volume (soil type is Clay Loam)		
1	8.0	17.7	26.6	20.5	24.5	39.0
2	4.0	15.7	22.7	20.5	24.0	39.0
3	1.0	6.8	15.4	20.0	23.5	38.5
4	4.0	11.8	19.5	20.0	23.0	38.0
5	3.0	10.1	15.1	19.5	23.5	37.0
6	8.0	13.0	20.2	19.5	23.5	36.5
7	6.0	13.3	23.5	19.0	23.0	36.5
8	3.0	9.9	16.6	19.0	22.5	36.5
9	2.0	8.1	15.1	19.0	22.5	35.5
10	1.0	6.3	13.1	19.0	23.0	36.0
11	2.0	7.2	13.5	19.0	22.5	35.5
12	4.0	15.2	23.7	19.0	22.5	35.5
13	10.0	17.6	29.1	19.5	22.5	34.5
14	3.0	10.7	18.7	19.0	22.5	34.0
15	7.0	14.3	21.8	19.5	23.0	34.5
16	2.0	10.3	18.5	19.0	22.0	35.0
17	4.0	12.9	20.2	19.0	22.0	34.5
18	4.0	10.9	18.9	18.5	28.0	34.0
19	6.0	14.1	22.5	19.5	28.5	34.0
20	9.0	19.7	28.5	19.0	28.5	34.0
21	2.0	9.6	20.2	19.0	28.5	34.5
22	6.0	15.7	21.6	19.5	27.5	34.5
23	3.0	9.0	16.4	19.5	26.5	33.5
24	6.0	18.5	27.0	19.0	26.0	34.0
25	8.0	18.9	30.6	19.0	26.0	34.0
26	2.0	5.3	15.1	18.5	25.5	34.0
27	8.0	19.1	29.6	18.5	25.0	33.5
28	9.0	16.4	27.5	18.5	24.5	33.5
29	8.0	18.5	26.0	19.0	24.5	33.0
30	9.0	20.1	29.1	18.5	23.5	33.0
31	10.0	19.0	30.0	19.0	24.0	33.5
Total						
Mean				19	24	35.1
Extreme	10.0	20.1	30.6	20.5	28.5	39
Date	16.5	15	16.5	18	16.5	18

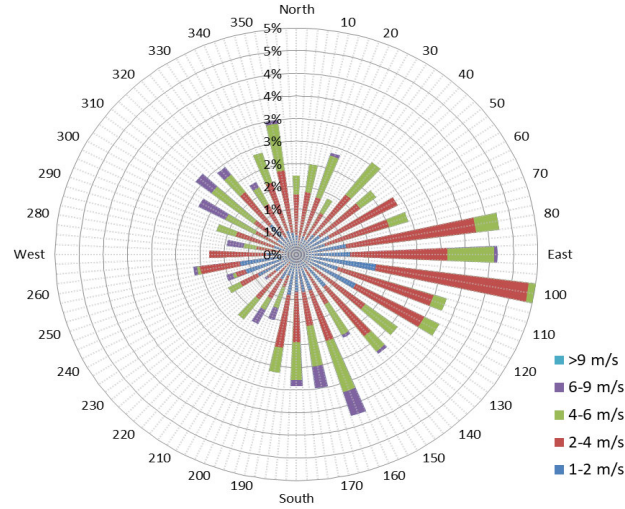


SRC proudly recognizes the following CRS supporters:

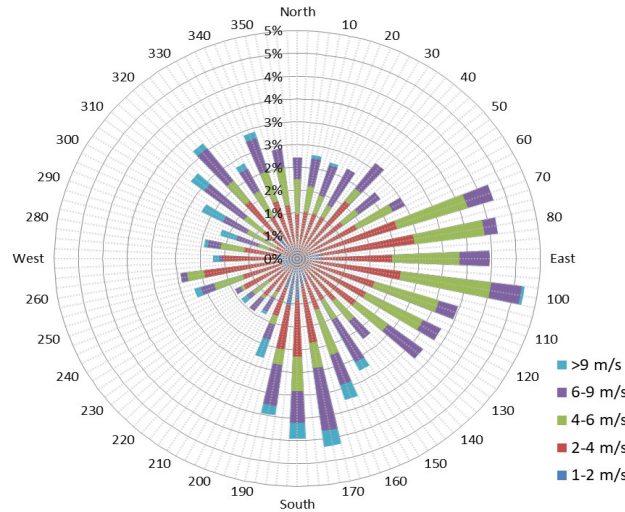




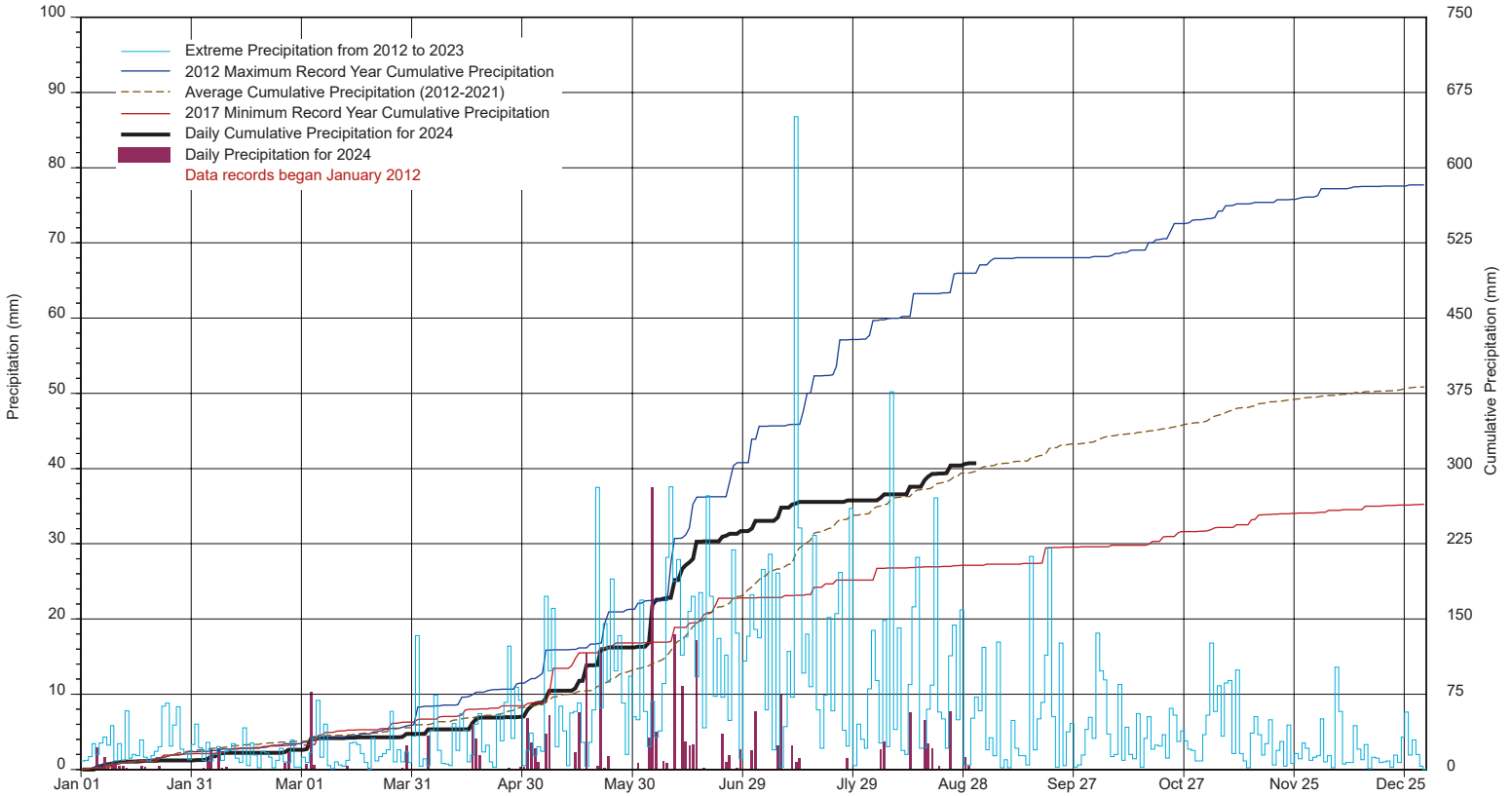
10 minute Average Wind Speed and Direction CLC August 2024



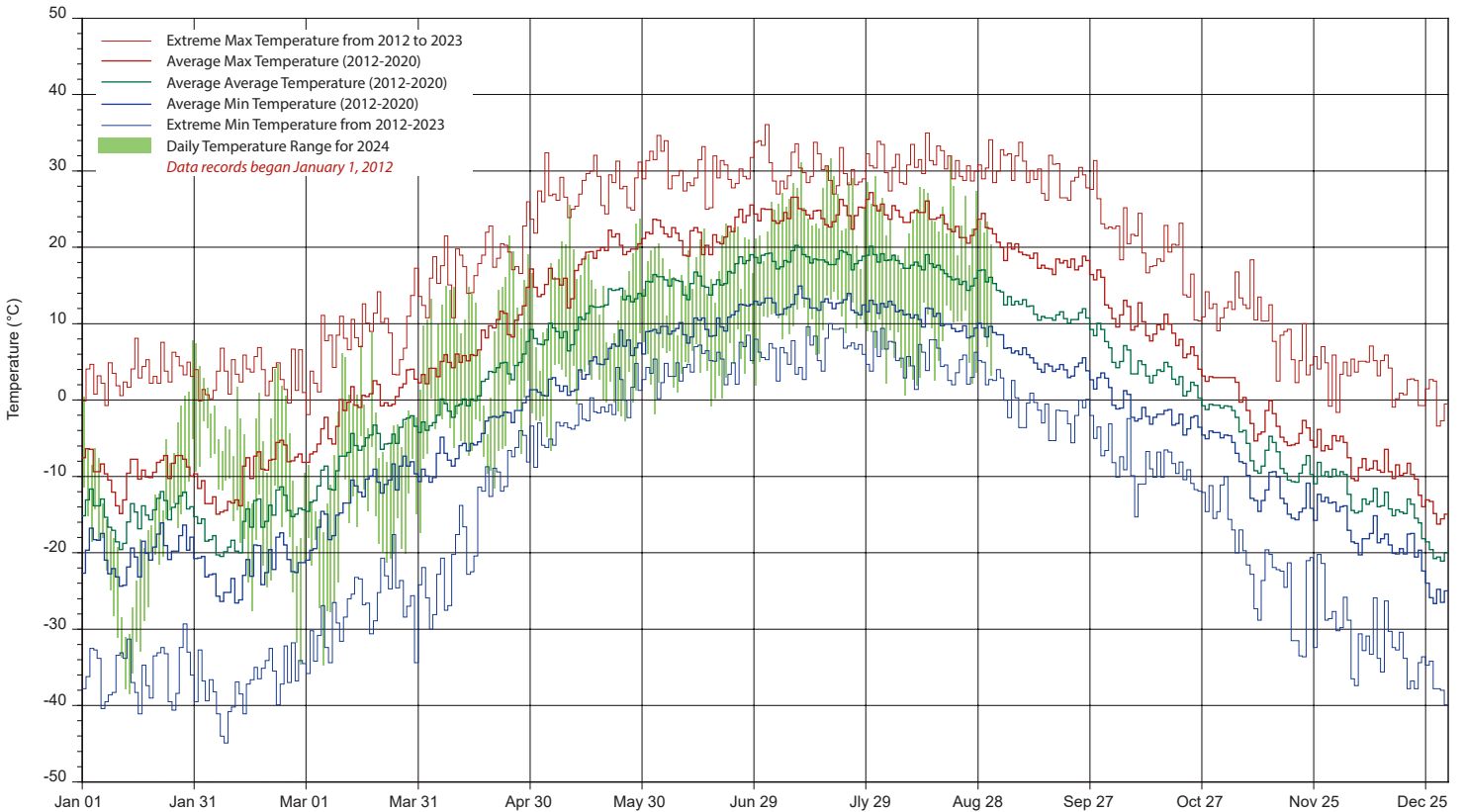
1/2 hr Maximum Wind Speed and Direction CLC August 2024



SRC's CLIMATE REFERENCE STATION at the Conservation Learning Centre 2024 PRECIPITATION AND AVERAGE



2024 TEMPERATURES AND AVERAGES



SRC proudly recognizes the following CRS supporters:

