



SRC CLIMATE REFERENCE STATION DAILY DATA REPORT

CONSERVATION LEARNING CENTRE

Saskatchewan 53.03°N 105.77°W Estab. 2011

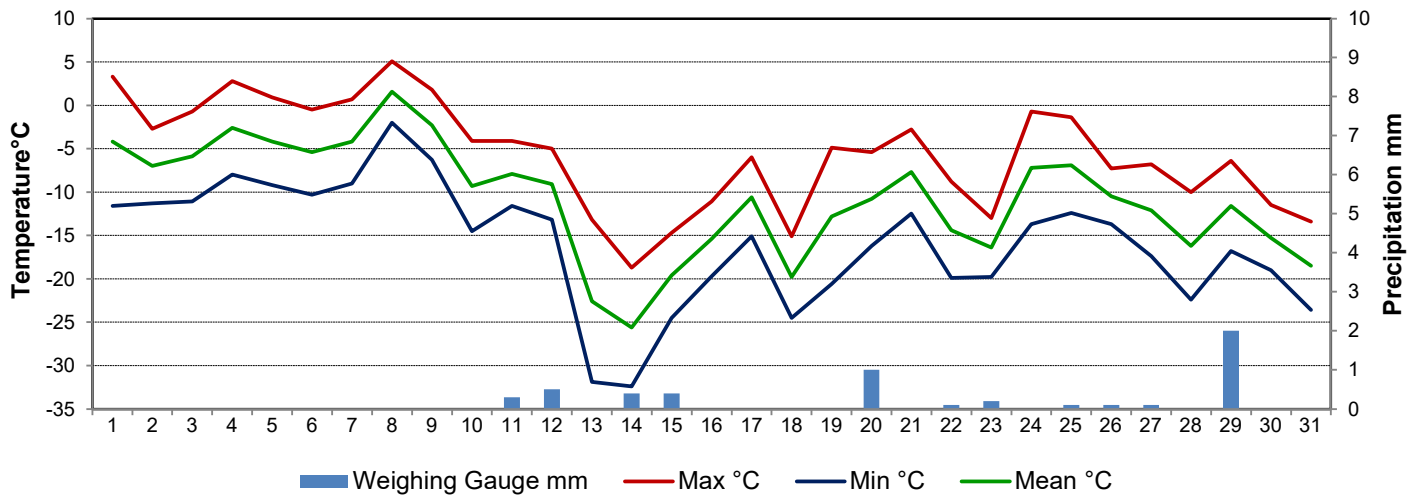
Preliminary **December 2020**

Day	Temperature			Degree-days			Precipitation			Relative Humidity		Station Pressure <i>corrected to sea level</i>	
	Max	Min	Mean	Growing	Heating	Cooling	Weighing Gauge	Comments	Snow-on-Ground 0900h	Max ½ hr Avg	Min ½ hr Avg	Max ½ hr Avg	Min ½ hr Avg
	°C	°C	°C	5°C base	18°C base	18°C base	mm		cm	%	%	mbar	mbar
1	3.3	-11.6	-4.2	0.0	22.2	0.0	0.0		26	94	70	1024	1000
2	-2.7	-11.3	-7.0	0.0	25.0	0.0	0.0		25	88	68	1024	1018
3	-0.7	-11.1	-5.9	0.0	23.9	0.0	0.0		24	94	73	1018	1010
4	2.8	-8.0	-2.6	0.0	20.6	0.0	0.0		24	91	66	1018	1011
5	0.9	-9.2	-4.2	0.0	22.2	0.0	0.0		24	97	70	1019	1015
6	-0.5	-10.3	-5.4	0.0	23.4	0.0	0.0		24	96	66	1016	1010
7	0.7	-9.0	-4.2	0.0	22.2	0.0	0.0		24	85	74	1014	1008
8	5.1	-2.0	1.6	0.0	16.4	0.0	0.0		24	88	71	1010	1006
9	1.8	-6.3	-2.3	0.0	20.3	0.0	0.0		23	94	79	1013	1009
10	-4.1	-14.5	-9.3	0.0	27.3	0.0	0.0		22	96	82	1017	1013
11	-4.1	-11.6	-7.9	0.0	25.9	0.0	0.3		22	95	84	1023	1017
12	-5.0	-13.2	-9.1	0.0	27.1	0.0	0.5		22	97	75	1022	1012
13	-13.2	-31.9	-22.6	0.0	40.6	0.0	0.0		22	85	71	1025	1018
14	-18.7	-32.4	-25.6	0.0	43.6	0.0	0.4		22	85	80	1024	1018
15	-14.7	-24.5	-19.6	0.0	37.6	0.0	0.4		23	88	80	1018	1003
16	-11.1	-19.7	-15.4	0.0	33.4	0.0	0.0		23	91	78	1008	1003
17	-6.0	-15.1	-10.6	0.0	28.6	0.0	0.0		23	95	76	1008	991
18	-15.1	-24.5	-19.8	0.0	37.8	0.0	0.0		23	84	66	1017	1001
19	-4.9	-20.6	-12.8	0.0	30.8	0.0	0.0		23	92	81	1005	990
20	-5.4	-16.2	-10.8	0.0	28.8	0.0	1.0		23	93	87	1003	993
21	-2.8	-12.5	-7.7	0.0	25.7	0.0	0.0		23	97	74	1007	1001
22	-8.8	-19.9	-14.4	0.0	32.4	0.0	0.1		22	96	82	1021	1005
23	-13.0	-19.8	-16.4	0.0	34.4	0.0	0.2		22	94	85	1022	1015
24	-0.7	-13.7	-7.2	0.0	25.2	0.0	0.0		23	93	74	1014	1002
25	-1.4	-12.4	-6.9	0.0	24.9	0.0	0.1		23	94	77	1013	1004
26	-7.3	-13.7	-10.5	0.0	28.5	0.0	0.1		23	95	88	1014	1012
27	-6.8	-17.4	-12.1	0.0	30.1	0.0	0.1		23	93	79	1021	1014
28	-10.0	-22.4	-16.2	0.0	34.2	0.0	0.0		24	95	85	1021	1009
29	-6.4	-16.8	-11.6	0.0	29.6	0.0	2.0		31	96	86	1014	1008
30	-11.5	-19.0	-15.3	0.0	33.3	0.0	0.0		31	92	85	1013	1003
31	-13.4	-23.6	-18.5	0.0	36.5	0.0	0.0		30	90	86	1013	1004
Total				0.0	892.5	0.0	5.2	0					
Avg	-5.6	-15.9	-10.8				385.1	Cumulative ppt					
Extreme	5.1	-32.4					2.0	0.0	31	97	66	1025	990
Date	8	14					29			5	4	13	19

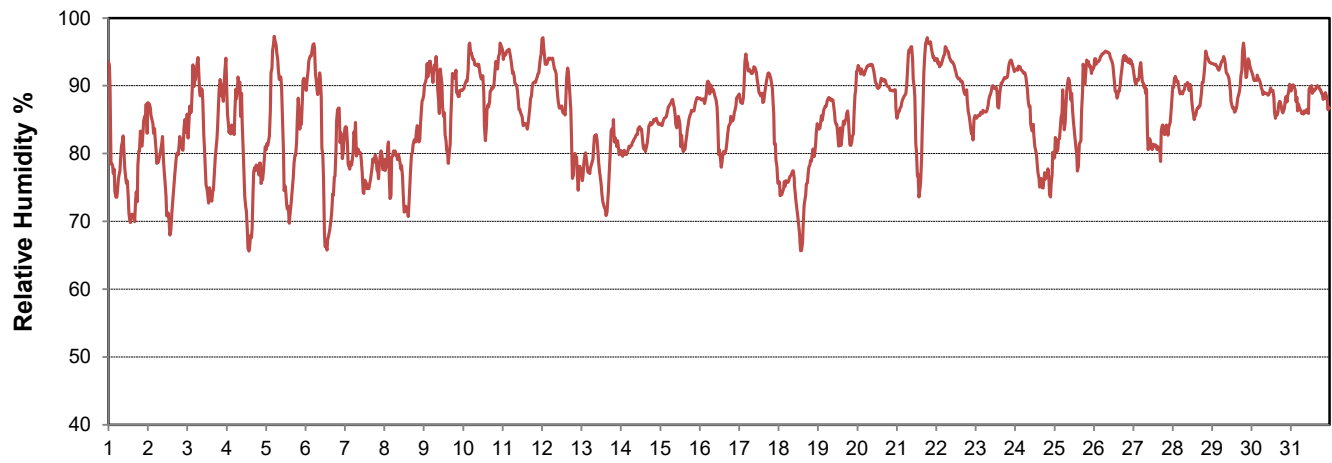
SRC proudly recognizes the following CRS supporters:



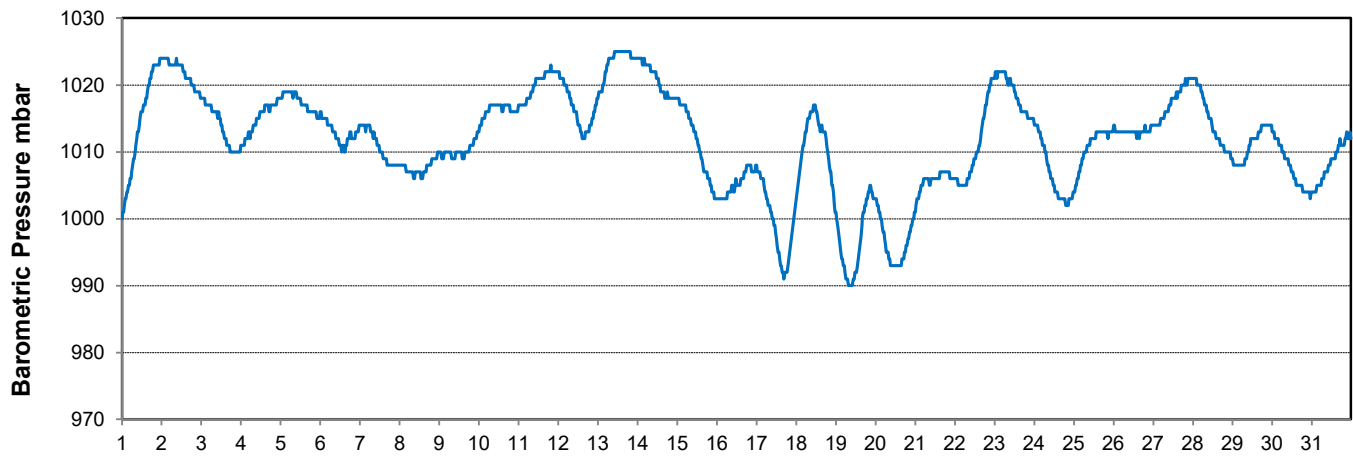
Temperature and Precipitation for December 2020



Relative Humidity for December 2020



Barometric Pressure Corrected to Sea Level for December 2020





SRC CLIMATE REFERENCE STATION DAILY DATA REPORT

CONSERVATION LEARNING CENTRE

Saskatchewan 53.03°N 105.77°W Estab. 2011

Preliminary

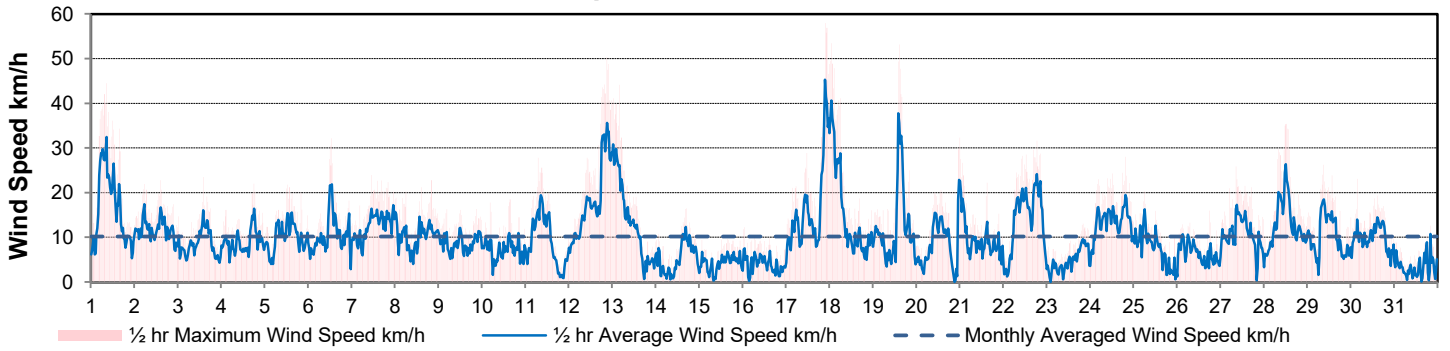
December 2020

Day	Wind Gust (10 meter)			Wind Speed (10 meters)	Soil Temperatures at 0900hrs								Radiation					
	Max	Direction	Time		Daily Average	Surface	5 cm	10 cm	20 cm	50 cm	100 cm	150 cm	300 cm	Bright Sunshine	Possible	% Possible	Global	Diffuse
	km/h					km/h	°C	°C	°C	°C	°C	°C	°C	°C	hours	hours		MJ/m ²
1	44.5	NW	8:40	16.5	0.0	0.5	0.5	1.0	2.0	3.5	5.0	6.5	0.0	7.9	0.0	1.9	1.8	
2	22.8	SW	14:41	11.6	-11.0	0.5	0.5	1.0	2.0	3.5	5.0	6.5	6.2	7.9	78.6	3.6	1.4	
3	23.5	SSW	14:07	8.3	-10.5	0.5	0.5	1.0	2.0	3.5	5.0	6.5	7.2	7.9	91.7	4.0	0.9	
4	22.0	SW	18:26	9.0	-6.0	0.0	0.5	1.0	2.0	3.5	5.0	6.5	6.6	7.8	84.4	3.7	0.9	
5	21.8	SW	12:31	10.1	-8.0	0.5	0.5	1.0	2.0	3.5	5.0	6.5	6.2	7.8	79.6	3.9	1.2	
6	32.1	SSW	13:20	10.8	-9.0	0.0	0.5	1.0	2.0	3.5	4.5	6.5	6.8	7.8	87.6	4.1	0.9	
7	23.9	SW	11:04	12.5	-5.5	0.0	0.5	1.0	2.0	3.5	4.5	6.5	0.5	7.7	6.5	2.2	2.0	
8	22.8	SW	20:02	10.3	0.5	0.0	0.5	1.0	2.0	3.5	4.5	6.5	0.2	7.7	2.6	2.0	1.9	
9	16.3	WNW	21:21	8.6	-2.0	0.5	0.5	1.0	2.0	3.5	4.5	6.5	3.0	7.7	39.0	2.4	1.4	
10	18.5	SSW	15:33	7.3	-15.0	0.5	0.5	1.0	2.0	3.5	4.5	6.5	4.1	7.7	53.5	4.1	1.4	
11	27.8	N	7:21	9.2	-5.5	0.0	0.0	1.0	2.0	3.5	4.5	6.0	0.0	7.7	0.0	1.6	1.5	
12	50.3	NNW	21:19	18.3	-7.0	0.0	0.0	1.0	2.0	3.0	4.5	6.0	0.0	7.6	0.0	1.2	1.2	
13	44.1	NNW	4:15	13.2	-22.5	0.0	0.0	1.0	2.0	3.0	4.5	6.0	7.1	7.6	93.2	4.1	0.8	
14	16.5	E	17:01	5.3	-21.5	-1.0	-0.5	0.5	2.0	3.0	4.5	6.0	0.0	7.6	0.0	2.0	1.8	
15	9.6	ESE	15:50	4.1	-18.0	-1.0	-0.5	0.5	1.5	3.0	4.5	6.0	1.3	7.6	17.1	2.3	1.8	
16	12.3	NNE	1:02	4.2	-16.5	-1.0	-0.5	0.0	1.5	3.0	4.5	6.0	1.8	7.6	23.7	2.5	1.8	
17	57.9	NW	21:47	16.3	-12.0	-1.0	-0.5	0.0	1.5	3.0	4.0	6.0	0.0	7.6	0.0	1.6	1.5	
18	53.4	NW	1:17	15.4	-24.0	-1.0	-1.0	0.0	1.5	3.0	4.0	6.0	6.3	7.6	83.2	3.5	0.9	
19	53.2	NW	14:47	12.3	-11.5	-1.5	-1.0	0.0	1.0	3.0	4.0	6.0	0.2	7.6	2.6	1.8	1.7	
20	29.9	NW	23:49	8.4	-9.0	-1.5	-1.0	0.0	1.0	2.5	4.0	6.0	0.1	7.6	1.3	2.1	1.8	
21	32.3	NNW	0:10	9.4	-10.0	-1.0	-1.0	-0.5	1.0	2.5	4.0	6.0	4.7	7.6	62.2	3.6	1.0	
22	31.6	N	18:44	14.1	-10.0	-1.0	-1.0	0.0	1.0	2.5	4.0	6.0	0.0	7.6	0.0	1.6	1.4	
23	13.1	ESE	20:20	4.6	-13.5	-1.5	-1.0	-0.5	1.0	2.5	4.0	6.0	0.0	7.6	0.0	1.6	1.5	
24	28.0	SW	19:49	13.5	-11.0	-1.5	-1.0	-0.5	1.0	2.5	4.0	6.0	5.0	7.6	66.1	3.4	1.6	
25	20.3	NW	6:01	7.4	-9.0	-1.0	-1.0	-0.5	1.0	2.5	4.0	5.5	4.7	7.6	62.0	3.3	1.1	
26	16.0	N	18:26	6.5	-8.5	-1.0	-1.0	-0.5	1.0	2.5	3.5	6.0	0.0	7.6	0.0	1.7	1.6	
27	25.9	NNW	8:49	10.6	-9.5	-1.0	-1.0	-0.5	1.0	2.5	3.5	5.5	0.0	7.6	0.0	2.1	1.9	
28	35.4	SW	12:35	12.9	-15.0	-1.5	-1.0	-0.5	1.0	2.5	3.5	5.5	3.5	7.6	46.0	3.6	1.6	
29	26.2	NNW	9:02	10.4	-7.5	-1.5	-1.0	-0.5	0.5	2.0	3.5	5.5	0.0	7.6	0.0	2.0	1.8	
30	23.1	SW	3:32	9.8	-13.0	-1.0	-1.0	-0.5	0.5	2.0	3.5	5.5	4.6	7.7	60.1	3.0	1.1	
31	12.6	S	20:27	3.4	-14.0	-1.5	-1.0	-0.5	0.5	2.0	3.5	5.5	0.1	7.7	1.3	5.2	2.8	
Total													80.2	237.3	33.8	85.7	46.0	
Mean				10.2	-10.8	-0.6	-0.4	0.3	1.5	2.9	4.2	6.1						
Extreme	57.9	NW	21:47															
Date	17																	

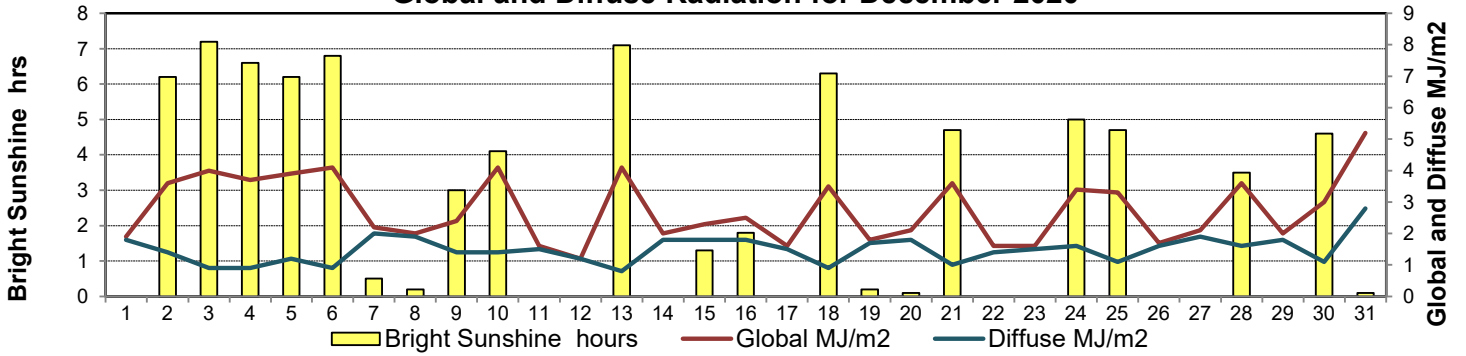
GLOSSARY OF TERMS

Degree-days	Radiation
Tm Mean Temperature	Bright Sunshine is the unobstructed direct radiation from the sun, as opposed to the shading of a location by clouds or by other atmospheric obstructions.
Growing (Tm-5°C); if Tm ≤ 5°C then GDD = 0	
Heating (18°C-Tm); if Tm ≥ 18°C then HDD = 0	
Cooling (Tm-18°C); if Tm ≤ 18°C then CDD = 0	Diffuse is radiation reaching the earth's surface after having been scattered from the direct solar beam
T Trace of Precipitation	Global is the sum of the direct solar and diffuse radiation
SOG Depth of snow-on-the-ground	Relative Humidity The ratio of the air's water vapour content of its water vapour capacity which changes with temperature.
Red Cell no data available	Air Pressure The force exerted by the weight of a column of air above a given point
Red Number manual calculation	Wind Gust The daily highest instantaneous value recorded irrespective of direction and/or duration

Wind Speed for December 2020

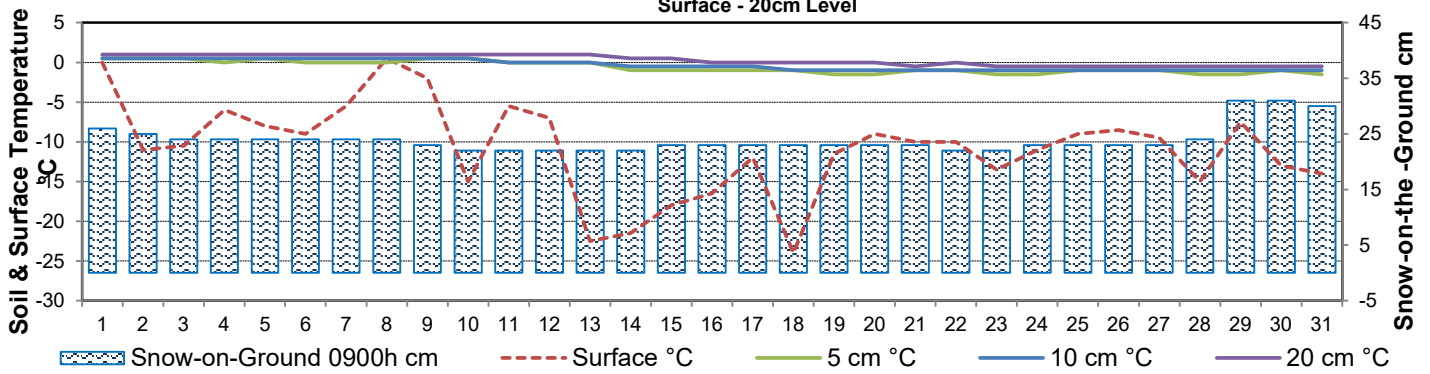


Global and Diffuse Radiation for December 2020



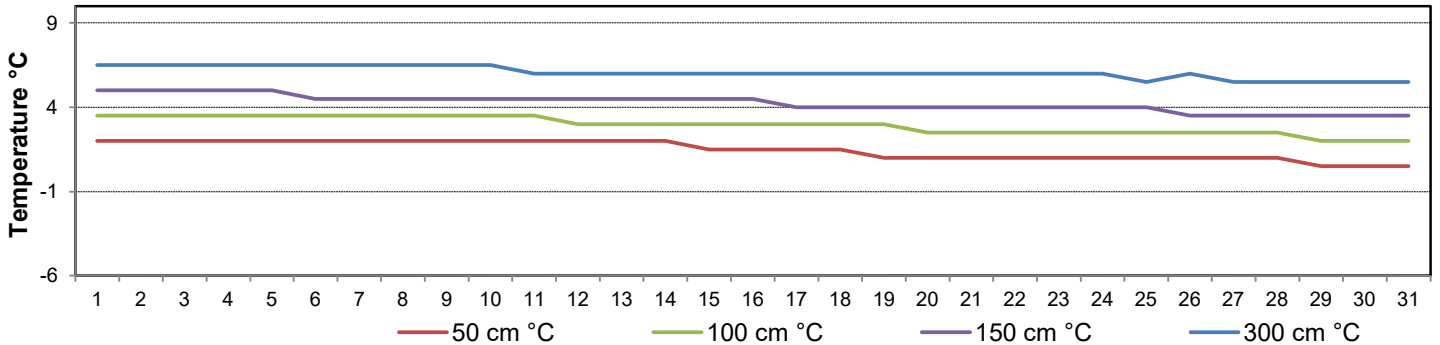
Soil Temperatures for December 2020

Surface - 20cm Level



Soil Temperatures for December 2020

50 - 300cm Level





SRC CLIMATE REFERENCE STATION DAILY DATA REPORT

CONSERVATION LEARNING CENTRE

Saskatchewan 53.03°N 105.77°W Estab. 2011

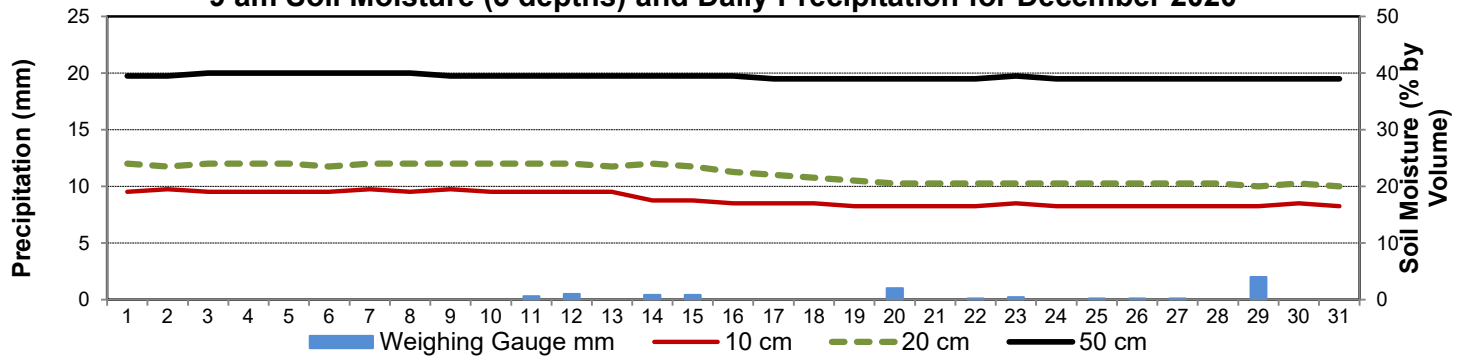
Preliminary **December 2020**

Day	2 meter Wind Speed			Soil Moisture at 0900 hrs (rounded to the 0.5%)														
	Daily Average	Max ½ hr Avg	½ hr Extreme Max	10 cm	20 cm	50 cm												
	km/h	km/h	km/h	% by volume (soil type is Clay Loam)														
1	13.0	24.9	33.5	19.0	24.0	39.5												
2	10.0	15.4	21.6	19.5	23.5	39.5												
3	8.0	14.4	20.8	19.0	24.0	40.0												
4	8.0	13.6	18.9	19.0	24.0	40.0												
5	8.0	13.8	19.3	19.0	24.0	40.0												
6	8.0	19.1	27.9	19.0	23.5	40.0												
7	11.0	14.5	20.2	19.5	24.0	40.0												
8	8.0	12.0	18.7	19.0	24.0	40.0												
9	7.0	10.6	14.3	19.5	24.0	39.5												
10	5.0	9.4	17.4	19.0	24.0	39.5												
11	7.0	15.2	22.4	19.0	24.0	39.5												
12	15.0	27.4	38.1	19.0	24.0	39.5												
13	11.0	24.1	34.4	19.0	23.5	39.5												
14	5.0	11.2	15.1	17.5	24.0	39.5												
15	4.0	6.8	9.9	17.5	23.5	39.5												
16	3.0	7.4	10.4	17.0	22.5	39.5												
17	13.0	35.0	45.6	17.0	22.0	39.0												
18	13.0	31.6	43.9	17.0	21.5	39.0												
19	10.0	29.0	40.4	16.5	21.0	39.0												
20	7.0	17.9	26.0	16.5	20.5	39.0												
21	8.0	17.8	26.0	16.5	20.5	39.0												
22	10.0	18.9	27.7	16.5	20.5	39.0												
23	4.0	8.0	11.8	17.0	20.5	39.5												
24	11.0	16.9	23.9	16.5	20.5	39.0												
25	5.0	11.3	17.0	16.5	20.5	39.0												
26	4.0	8.3	11.6	16.5	20.5	39.0												
27	9.0	13.8	19.9	16.5	20.5	39.0												
28	10.0	22.8	30.0	16.5	20.5	39.0												
29	8.0	14.4	19.7	16.5	20.0	39.0												
30	8.0	12.7	17.4	17.0	20.5	39.0												
31	1.0	4.0	8.0	16.5	20.0	39.0												
Total																		
Mean				18	22	39.4												
Extreme	15.0	35.0	45.6	19.5	24	40												
Date	1	0	0	1	1	1												

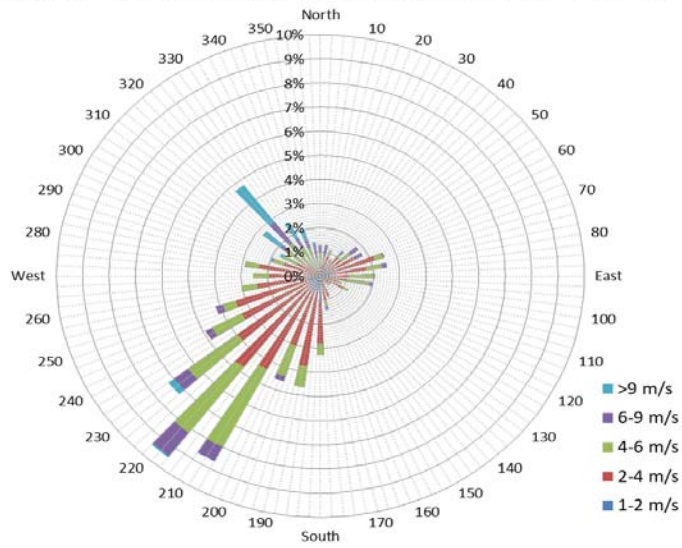
SRC proudly recognizes the following CRS supporters:



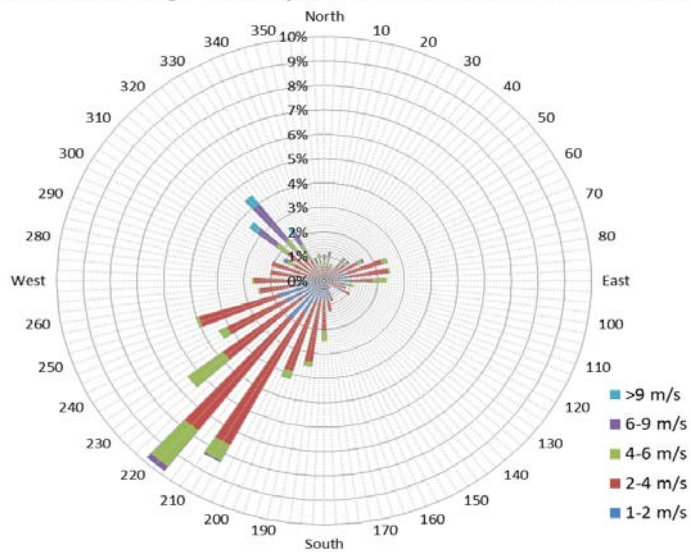
9 am Soil Moisture (3 depths) and Daily Precipitation for December 2020



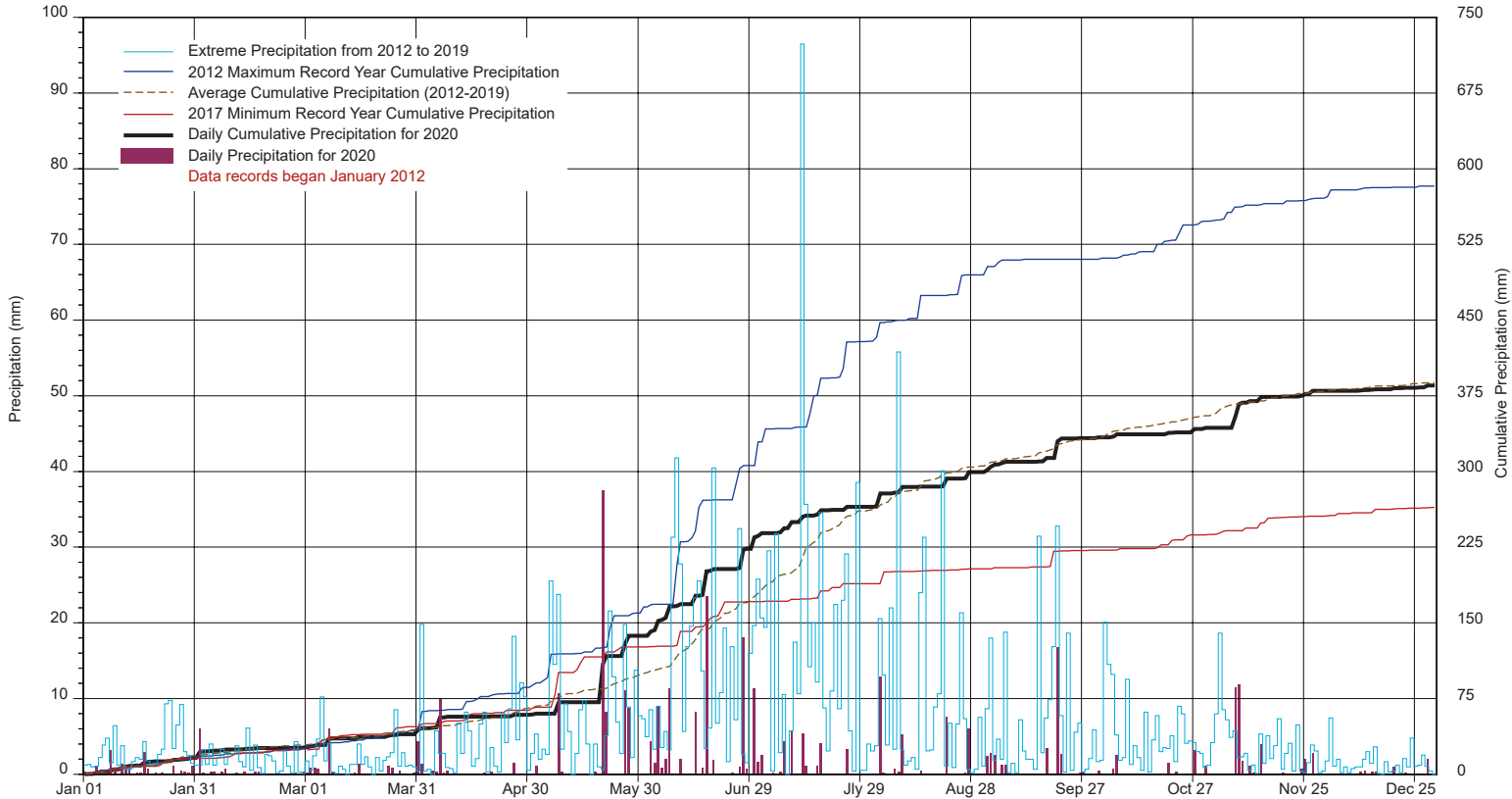
1/2 hr Maximum Wind Speed and Direction CLC Dec 2020



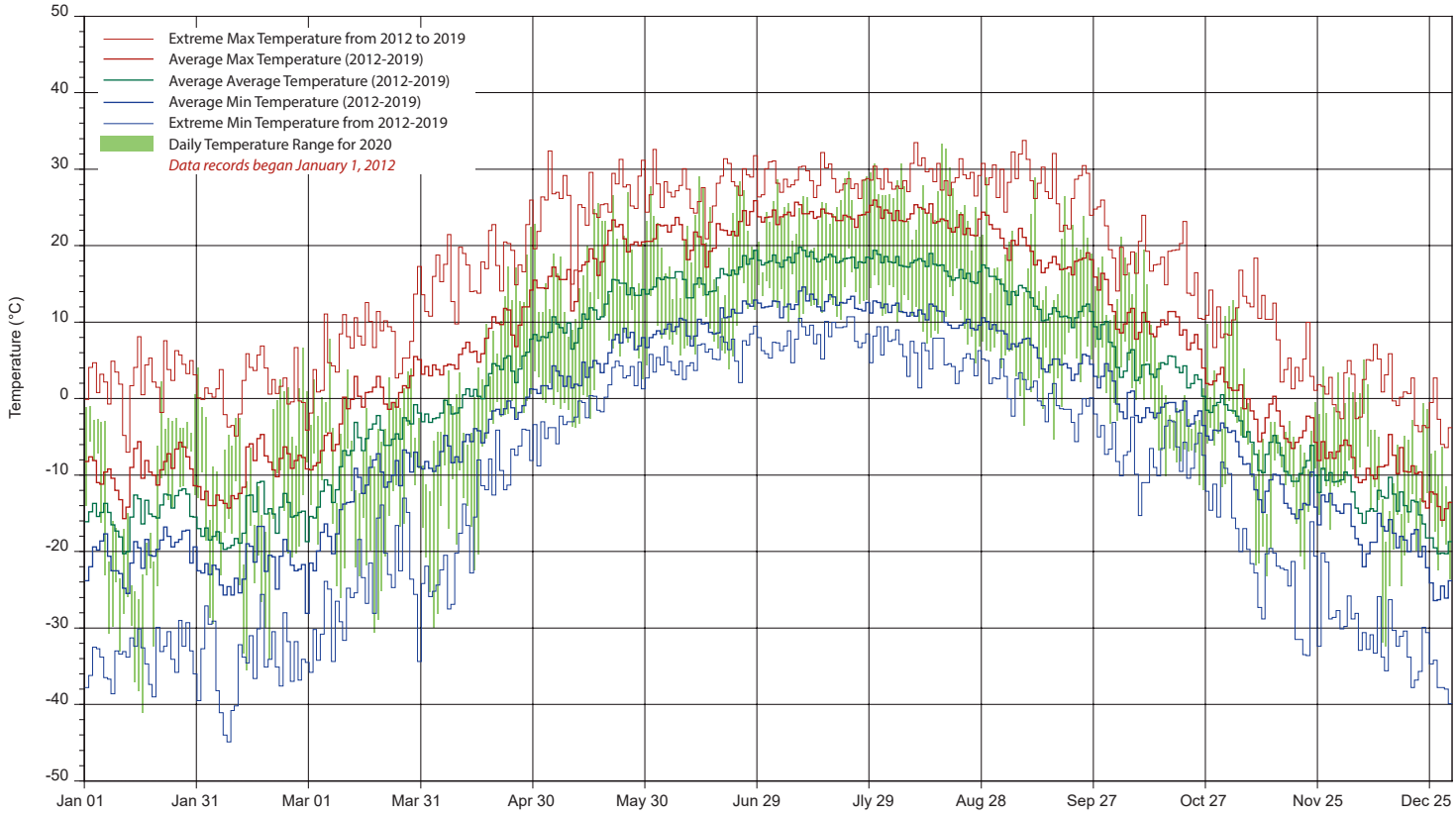
10 minute Average Wind Speed and Direction CLC Dec 2020



SRC's CLIMATE REFERENCE STATION at the Conservation Learning Centre 2020 PRECIPITATION AND AVERAGE



2020 TEMPERATURES AND AVERAGES



SRC proudly recongnizes the following CRS supporters:

