



SRC CLIMATE REFERENCE STATION DAILY DATA REPORT

CONSERVATION LEARNING CENTRE

Saskatchewan 53.03°N 105.77°W 451m asl Estab. 2011

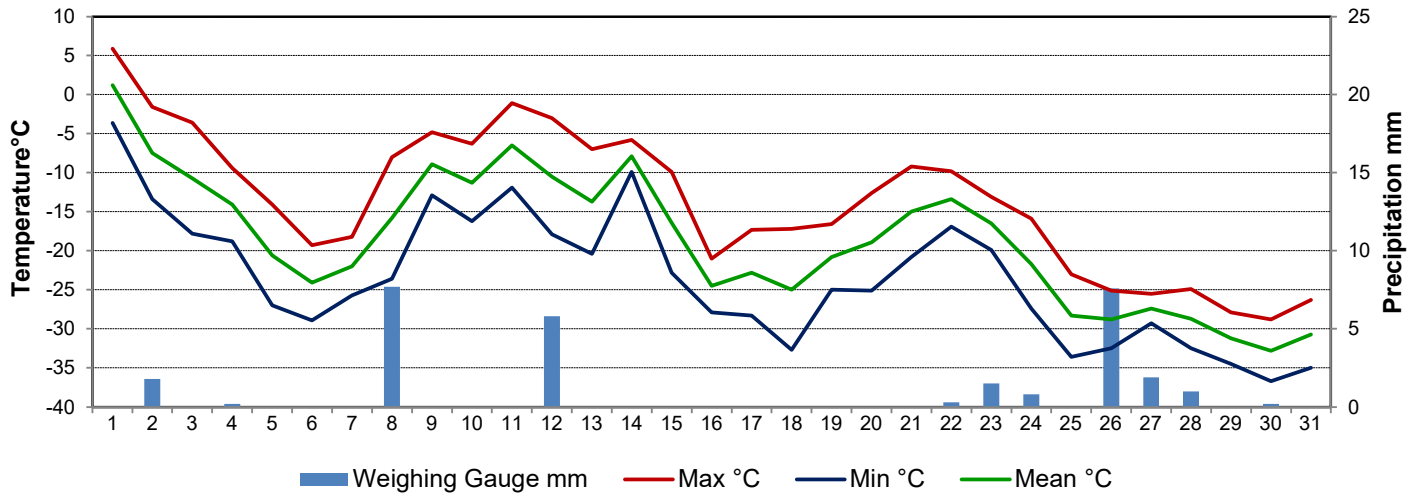
Preliminary **December 2021**

Day	Temperature			Degree-days			Precipitation			Relative Humidity		Station Pressure <i>corrected to sea level</i>	
	Max	Min	Mean	Growing	Heating	Cooling	Weighing Gauge	Comments	Snow-on-Ground 0900h	Max ½ hr Avg	Min ½ hr Avg	Max ½ hr Avg	Min ½ hr Avg
	°C	°C	°C	5°C base	18°C base	18°C base	mm		cm	%	%	mbar	mbar
1	5.9	-3.6	1.2	0.0	16.8	0.0	0.0		15	97	59	1007	992
2	-1.6	-13.4	-7.5	0.0	25.5	0.0	1.8		14	98	68	1011	1008
3	-3.6	-17.8	-10.7	0.0	28.7	0.0	0.0		14	92	61	1020	1011
4	-9.4	-18.8	-14.1	0.0	32.1	0.0	0.2		14	92	74	1021	1011
5	-14.1	-27.0	-20.6	0.0	38.6	0.0	0.0		15	91	68	1026	1011
6	-19.3	-28.9	-24.1	0.0	42.1	0.0	0.0		14	87	68	1023	1009
7	-18.2	-25.7	-22.0	0.0	40.0	0.0	0.0		14	87	81	1009	1006
8	-8.0	-23.6	-15.8	0.0	33.8	0.0	7.7		15	93	84	1007	984
9	-4.8	-12.9	-8.9	0.0	26.9	0.0	0.0		21	95	72	999	989
10	-6.3	-16.2	-11.3	0.0	29.3	0.0	0.0		20	90	72	1000	995
11	-1.1	-11.9	-6.5	0.0	24.5	0.0	0.0		20	85	71	995	982
12	-3.0	-17.9	-10.5	0.0	28.5	0.0	5.8		20	97	76	1005	987
13	-7.0	-20.4	-13.7	0.0	31.7	0.0	0.0		28	96	88	1014	1005
14	-5.8	-9.9	-7.9	0.0	25.9	0.0	0.0		26	98	91	1013	999
15	-9.9	-22.8	-16.4	0.0	34.4	0.0	0.0		26	91	77	1011	1001
16	-21.0	-27.9	-24.5	0.0	42.5	0.0	0.0		30	86	78	1021	1011
17	-17.3	-28.3	-22.8	0.0	40.8	0.0	0.0		29	87	73	1027	1021
18	-17.2	-32.7	-25.0	0.0	43.0	0.0	0.0		29	85	79	1025	1002
19	-16.6	-25.0	-20.8	0.0	38.8	0.0	0.0		29	86	73	1016	1000
20	-12.6	-25.1	-18.9	0.0	36.9	0.0	0.0		29	88	78	1019	1007
21	-9.2	-20.8	-15.0	0.0	33.0	0.0	0.0		29	90	78	1007	1002
22	-9.8	-16.9	-13.4	0.0	31.4	0.0	0.3		29	92	83	1006	1003
23	-13.1	-19.9	-16.5	0.0	34.5	0.0	1.5		29	89	85	1003	983
24	-15.9	-27.4	-21.7	0.0	39.7	0.0	0.8		37	87	70	1007	985
25	-23.0	-33.6	-28.3	0.0	46.3	0.0	0.0		34	83	73	1017	1007
26	-25.1	-32.5	-28.8	0.0	46.8	0.0	7.6		34	82	79	1017	1014
27	-25.5	-29.3	-27.4	0.0	45.4	0.0	1.9		37	82	75	1014	1004
28	-24.9	-32.5	-28.7	0.0	46.7	0.0	1.0		38	79	77	1007	1003
29	-27.9	-34.5	-31.2	0.0	49.2	0.0	0.0		39	80	71	1009	1002
30	-28.8	-36.7	-32.8	0.0	50.8	0.0	0.2		39	79	71	1009	1001
31	-26.3	-35.0	-30.7	0.0	48.7	0.0	0.0		39	79	71	1016	1009
Total				0.0	1133.3	0.0	28.8	0					
Avg	-13.6	-23.5	-18.6				298.2	Cumulative ppt					
Extreme	5.9	-36.7					7.7	0.0	39	98	59	1027	982
Date	1	30					8			2	1	17	11

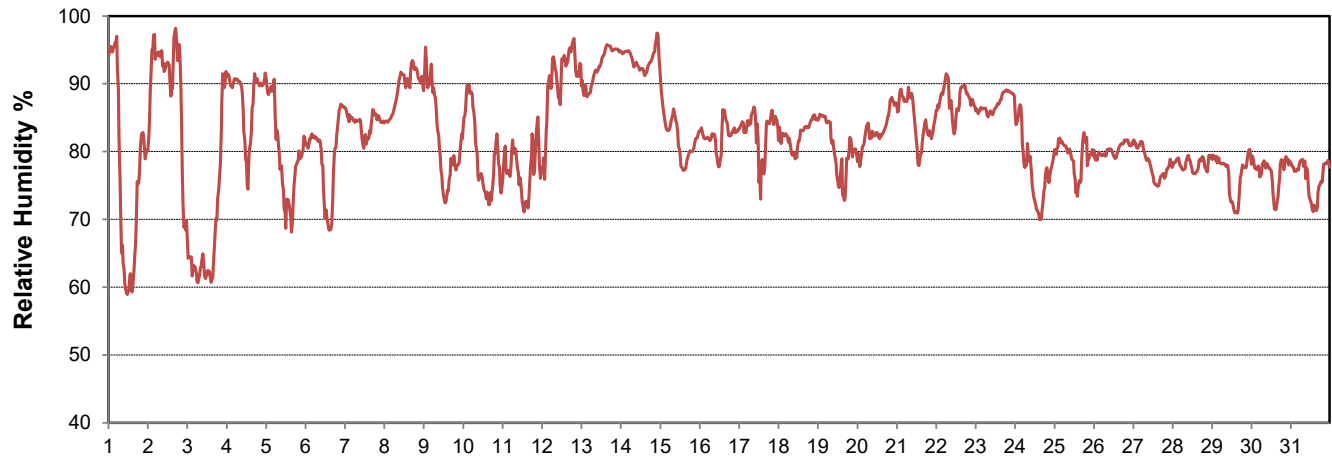
SRC proudly recognizes the following CRS supporters:



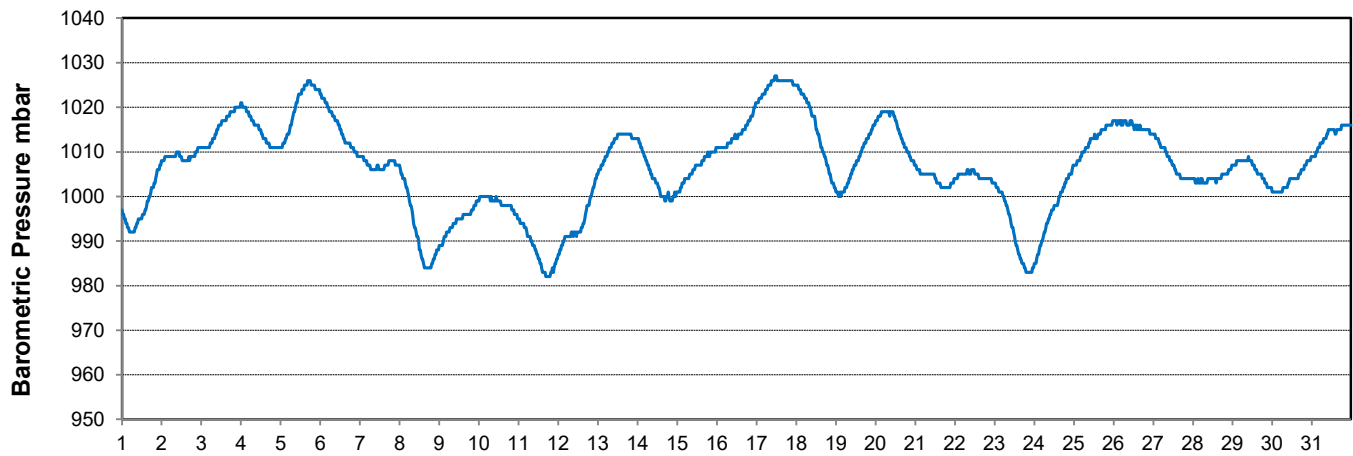
Temperature and Precipitation for December 2021



Relative Humidity for December 2021



Barometric Pressure Corrected to Sea Level for December 2021





SRC CLIMATE REFERENCE STATION DAILY DATA REPORT

CONSERVATION LEARNING CENTRE

Saskatchewan 53.03°N 105.77°W 451m asl Estab. 2011

Preliminary

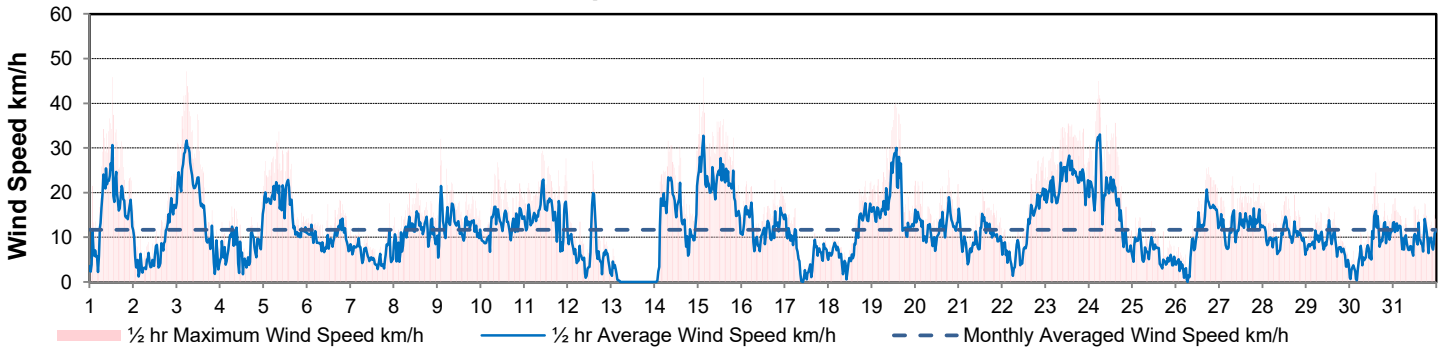
December 2021

Day	Wind Gust (10 meter)			Wind Speed (10 meters)	Soil Temperatures at 0900hrs								Radiation					
	Max	Direction	Time		Daily Average	Surface	5 cm	10 cm	20 cm	50 cm	100 cm	150 cm	300 cm	Bright Sunshine	Possible	% Possible	Global	Diffuse
	km/h					km/h	°C	°C	°C	°C	°C	°C	°C	°C	hours	hours		MJ/m ²
1	45.9	NW	12:54	15.6	3.5	-0.5	-0.5	0.5	2.0	4.0	5.5	7.0	0.0	7.9	0.0	2.1	2.0	
2	24.2	SW	22:57	7.8	-13.0	-0.5	0.0	0.5	1.5	4.0	5.5	7.0	0.9	7.9	11.4	2.3	1.8	
3	47.2	WNW	5:58	17.9	-7.5	-0.5	-0.5	0.5	1.5	3.5	5.0	7.0	7.3	7.9	92.9	4.0	0.9	
4	20.4	ENE	23:57	7.6	-13.0	-1.0	-0.5	0.5	1.5	3.5	5.0	7.0	5.7	7.8	72.8	4.5	1.1	
5	33.7	N	8:52	16.5	-14.0	-1.0	-1.0	0.0	1.5	3.5	5.0	7.0	5.9	7.8	75.6	4.5	1.2	
6	18.4	SSW	18:29	9.7	-22.5	-1.5	-1.0	0.0	1.5	3.5	5.0	7.0	7.0	7.8	90.1	4.6	1.6	
7	17.6	E	21:46	6.2	-18.5	-2.0	-1.5	0.0	1.5	3.5	5.0	7.0	3.0	7.7	38.8	3.1	1.7	
8	22.1	E	12:45	11.4	-12.5	-2.5	-2.0	-0.5	1.5	3.5	5.0	7.0	0.0	7.7	0.0	1.5	1.5	
9	32.0	NW	2:13	13.1	-9.0	-2.0	-1.5	-0.5	1.0	3.0	5.0	7.0	7.0	7.7	90.9	3.4	0.9	
10	26.8	SW	9:15	12.9	-11.5	-1.5	-1.0	-0.5	1.0	3.0	5.0	7.0	1.8	7.7	23.5	2.4	1.9	
11	29.3	SSW	10:03	15.2	-10.0	-1.5	-1.0	-0.5	1.0	3.0	4.5	6.5	6.8	7.7	88.9	3.7	1.1	
12	27.0	N	13:55	7.3	-8.0	-1.0	-1.0	-0.5	1.0	3.0	4.5	7.0	0.6	7.6	7.9	0.9	0.8	
13	7.5	S	1:03	0.4	-7.0	-1.0	-1.0	-0.5	1.0	3.0	4.5	6.5	0.0	7.6	0.0	0.9	0.9	
14	31.6	E	7:39	14.0	-3.0	-1.0	-1.0	-0.5	1.0	3.0	4.5	6.5	0.0	7.6	0.0	1.0	1.0	
15	45.8	NW	3:12	22.5	-11.0	-1.0	-1.0	-0.5	1.0	3.0	4.5	6.5	1.6	7.6	21.1	2.4	2.0	
16	22.8	NNW	18:48	12.2	-15.5	-1.0	-1.0	0.0	1.0	3.0	4.5	6.5	3.3	7.6	43.5	3.0	2.0	
17	18.5	NNW	0:27	6.3	-10.0	-1.5	-1.0	0.0	1.0	3.0	4.5	6.5	5.1	7.6	67.4	3.8	1.3	
18	22.6	ENE	20:39	8.9	-17.0	-1.5	-1.0	-0.5	1.0	2.5	4.5	6.5	3.8	7.6	50.2	3.3	2.0	
19	40.1	NW	13:28	17.7	-11.0	-2.0	-1.5	-0.5	1.0	2.5	4.0	6.5	4.8	7.6	63.5	3.3	1.4	
20	25.1	WSW	18:50	12.4	-17.5	-2.0	-1.5	-0.5	1.0	2.5	4.0	6.5	0.0	7.6	0.0	1.6	1.6	
21	21.9	SW	0:21	9.9	-13.0	-2.0	-1.5	-0.5	1.0	2.5	4.0	6.5	0.0	7.6	0.0	2.0	2.0	
22	28.1	E	23:14	10.6	-6.5	-1.5	-1.5	-0.5	1.0	2.5	4.0	6.5	0.0	7.6	0.0	2.0	1.9	
23	35.5	E	12:52	22.6	-8.0	-1.5	-1.5	-0.5	0.5	2.5	4.0	6.5	0.0	7.6	0.0	1.8	1.7	
24	45.0	NW	5:29	18.2	-12.5	-1.5	-1.5	-0.5	0.5	2.5	4.0	6.5	6.0	7.6	79.3	3.5	1.0	
25	14.5	W	4:18	6.5	-18.0	-1.5	-1.5	-0.5	0.5	2.5	4.0	6.5	3.1	7.6	40.9	2.9	2.2	
26	25.7	NNE	18:05	10.1	-14.5	-1.5	-1.5	-0.5	0.5	2.5	4.0	6.5	0.0	7.6	0.0	1.6	1.5	
27	23.6	NW	7:57	12.6	-14.5	-2.0	-1.5	-0.5	0.5	2.5	4.0	6.5	0.4	7.6	5.3	2.6	2.3	
28	19.5	SW	17:38	10.2	-17.0	-1.5	-1.5	-0.5	0.5	2.5	4.0	6.0	0.0	7.6	0.0	2.1	2.1	
29	16.8	WSW	12:59	8.4	-19.0	-1.5	-1.5	-0.5	0.5	2.0	3.5	6.0	6.3	7.6	82.7	4.4	1.3	
30	24.5	NW	14:30	7.9	-16.5	-2.0	-1.5	-0.5	0.5	2.0	3.5	6.0	4.0	7.6	52.4	3.4	1.8	
31	18.8	WNW	1:51	9.8	-19.0	-2.0	-1.5	-1.0	0.5	2.0	3.5	6.0	6.3	7.7	82.2	5.5	3.0	
Total													90.7	237.4	38.2	88.1	49.5	
Mean				11.7	-12.5	-1.5	-1.2	-0.3	1.0	2.9	4.4	6.6						
Extreme	47.2	WNW	5:58															
Date	3																	

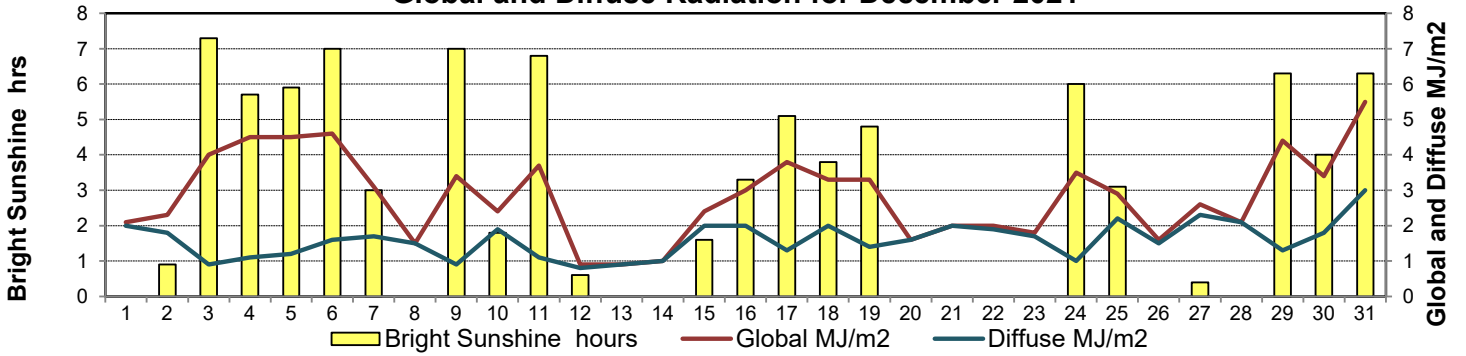
GLOSSARY OF TERMS

Degree-days	Radiation
Tm Mean Temperature	Bright Sunshine is the unobstructed direct radiation from the sun, as opposed to the shading of a location by clouds or by other atmospheric obstructions.
Growing (Tm-5°C); if Tm ≤ 5°C then GDD = 0	
Heating (18°C-Tm); if Tm ≥ 18°C then HDD = 0	
Cooling (Tm-18°C); if Tm ≤ 18°C then CDD = 0	Diffuse is radiation reaching the earth's surface after having been scattered from the direct solar beam
T Trace of Precipitation	Global is the sum of the direct solar and diffuse radiation
SOG Depth of snow-on-the-ground	Relative Humidity The ratio of the air's water vapour content of its water vapour capacity which changes with temperature.
Red Cell no data available	Air Pressure The force exerted by the weight of a column of air above a given point
Red Number manual calculation	Wind Gust The daily highest instantaneous value recorded irrespective of direction and/or duration

Wind Speed for December 2021

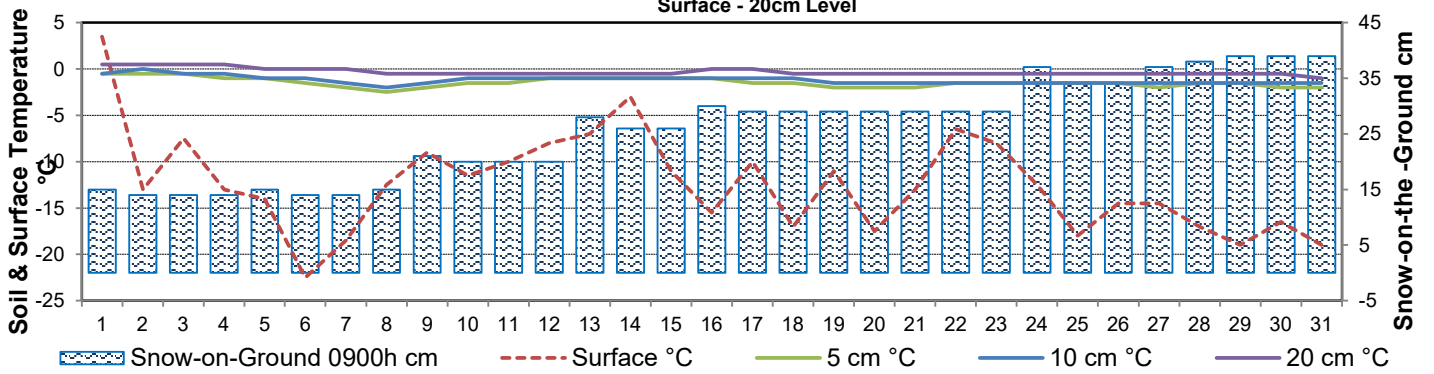


Global and Diffuse Radiation for December 2021



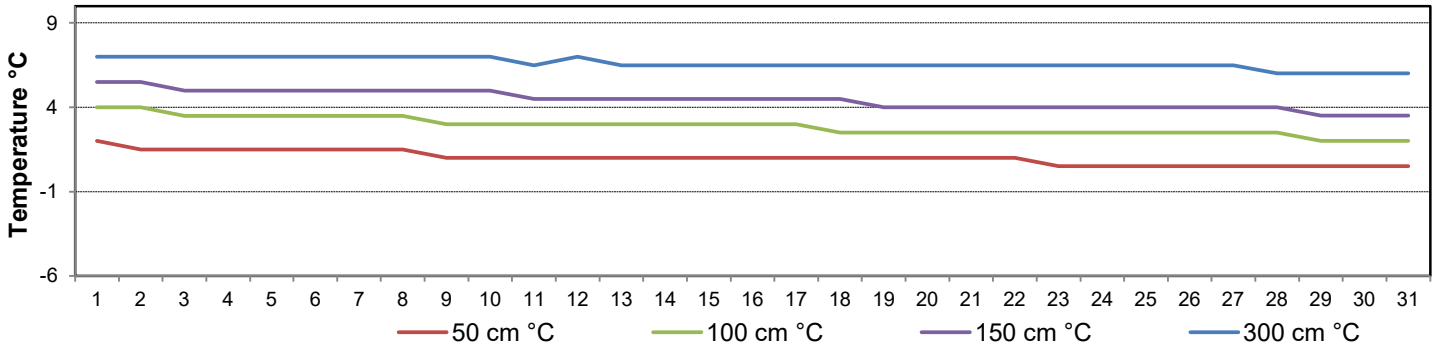
Soil Temperatures for December 2021

Surface - 20cm Level



Soil Temperatures for December 2021

50 - 300cm Level





SRC CLIMATE REFERENCE STATION DAILY DATA REPORT

CONSERVATION LEARNING CENTRE

Saskatchewan 53.03°N 105.77°W 451m asl Estab. 2011

Preliminary **December 2021**

Day	2 meter Wind Speed			Soil Moisture at 0900 hrs (rounded to the 0.5%)												
	Daily Average	Max ½ hr Avg	½ hr Extreme Max	10 cm	20 cm	50 cm										
	km/h	km/h	km/h	% by volume (soil type is Clay Loam)												
1	13.0	24.4	36.6	18.5	23.0	35.0										
2	6.0	14.0	21.0	19.0	23.0	34.5										
3	14.0	25.3	38.5	18.5	23.0	34.5										
4	6.0	12.9	19.5	18.0	23.0	34.5										
5	13.0	18.6	26.0	17.5	23.0	34.5										
6	8.0	11.8	15.2	16.0	23.0	34.5										
7	4.0	9.4	14.1	15.5	22.5	34.5										
8	9.0	11.8	19.1	15.5	20.5	34.0										
9	11.0	18.5	25.8	15.5	20.0	34.0										
10	11.0	15.0	22.2	16.0	20.5	34.0										
11	13.0	19.8	26.2	16.0	20.5	34.0										
12	4.0	15.4	22.0	16.0	20.5	34.0										
13	2.0	7.5	11.6	16.5	20.5	34.0										
14	12.0	18.8	24.8	16.0	21.0	34.0										
15	18.0	25.5	36.0	16.5	21.0	34.0										
16	10.0	14.1	19.3	16.5	20.5	34.0										
17	5.0	12.1	15.8	16.0	20.5	34.0										
18	5.0	14.7	19.5	16.0	20.0	34.0										
19	14.0	24.1	33.5	15.5	19.5	34.0										
20	11.0	16.4	22.2	15.5	20.0	34.5										
21	9.0	14.7	20.2	16.0	20.0	34.5										
22	9.0	17.4	23.7	15.5	19.5	34.0										
23	19.0	22.8	30.2	15.5	20.0	34.0										
24	15.0	25.6	34.3	15.5	19.5	34.0										
25	5.0	8.6	11.8	15.5	19.5	33.5										
26	7.0	13.7	20.4	15.5	19.5	34.0										
27	11.0	13.7	18.9	15.5	19.5	34.0										
28	9.0	13.2	17.9	15.5	19.0	34.0										
29	7.0	11.6	15.4	15.5	19.5	34.0										
30	5.0	13.1	19.5	15.0	19.5	34.0										
31	8.0	5.0	15.0	15.5	19.0	34.0										
Total																
Mean				16	21	34.1										
Extreme	19.0	25.6	38.5	19	23	35										
Date	-0.5	-0.5	0.5	0.5	0.5	0.5										

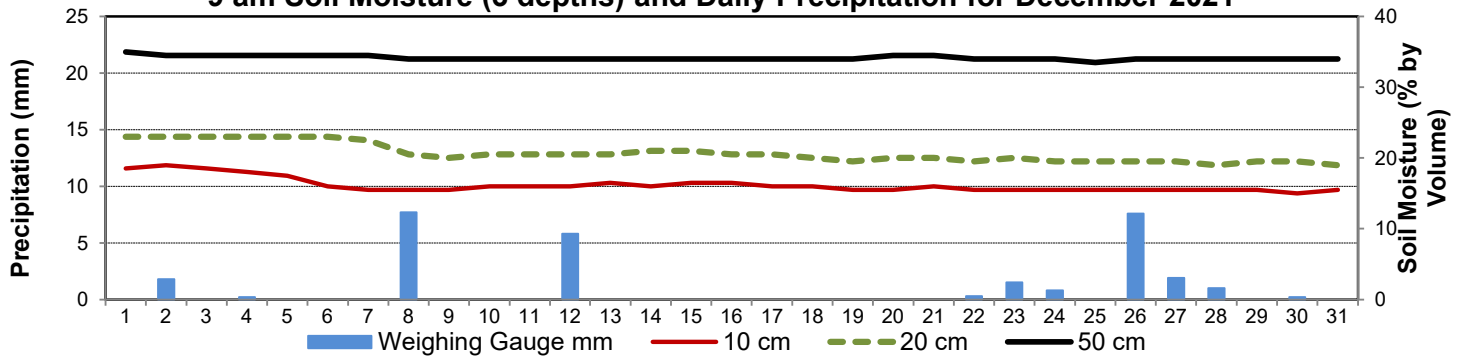
SRC proudly recognizes the following CRS supporters:



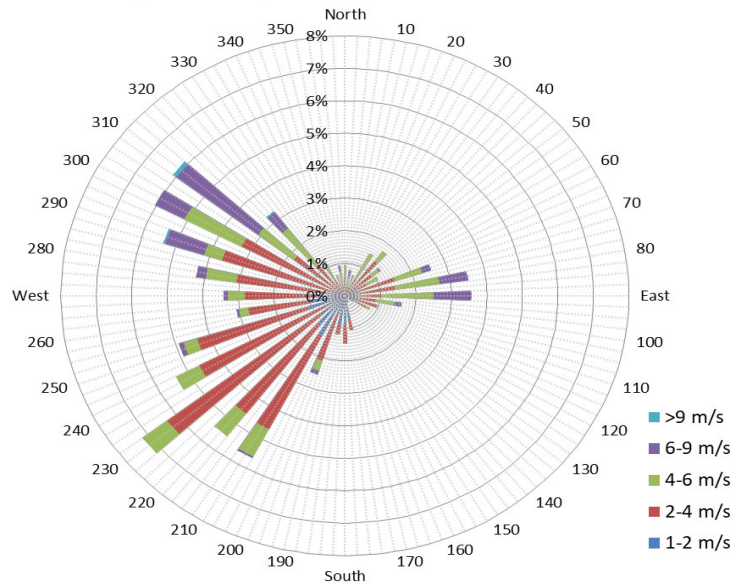
Agriculture and Agri-Food Canada / Agriculture et Agroalimentaire Canada



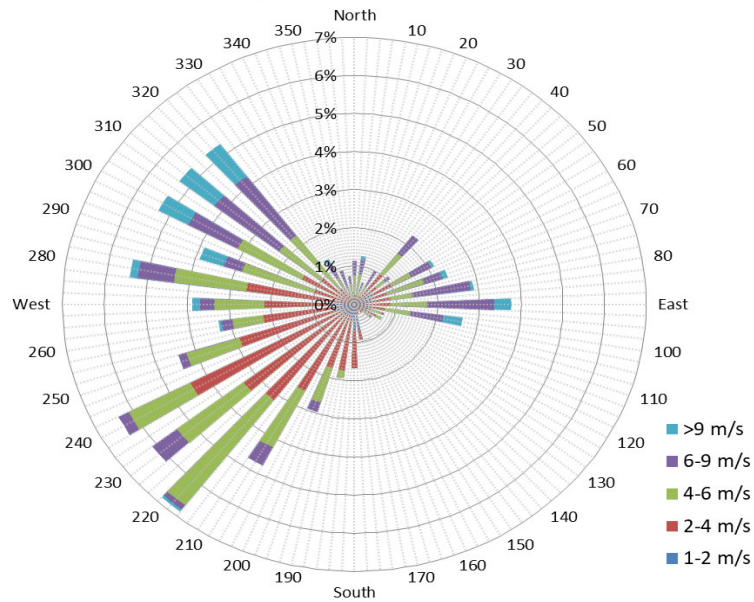
9 am Soil Moisture (3 depths) and Daily Precipitation for December 2021



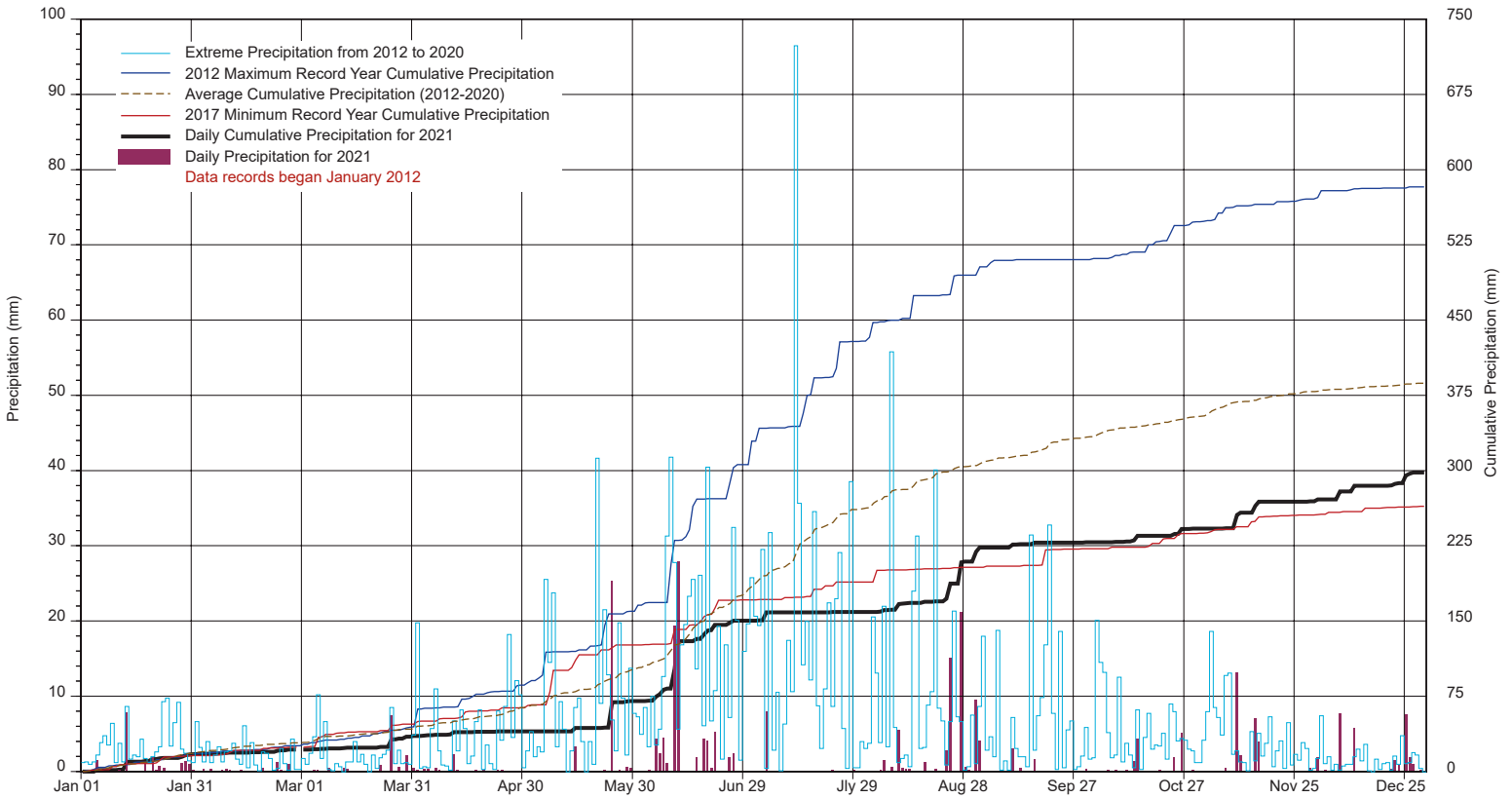
10 minute Average Wind Speed and Direction CLC December 2021



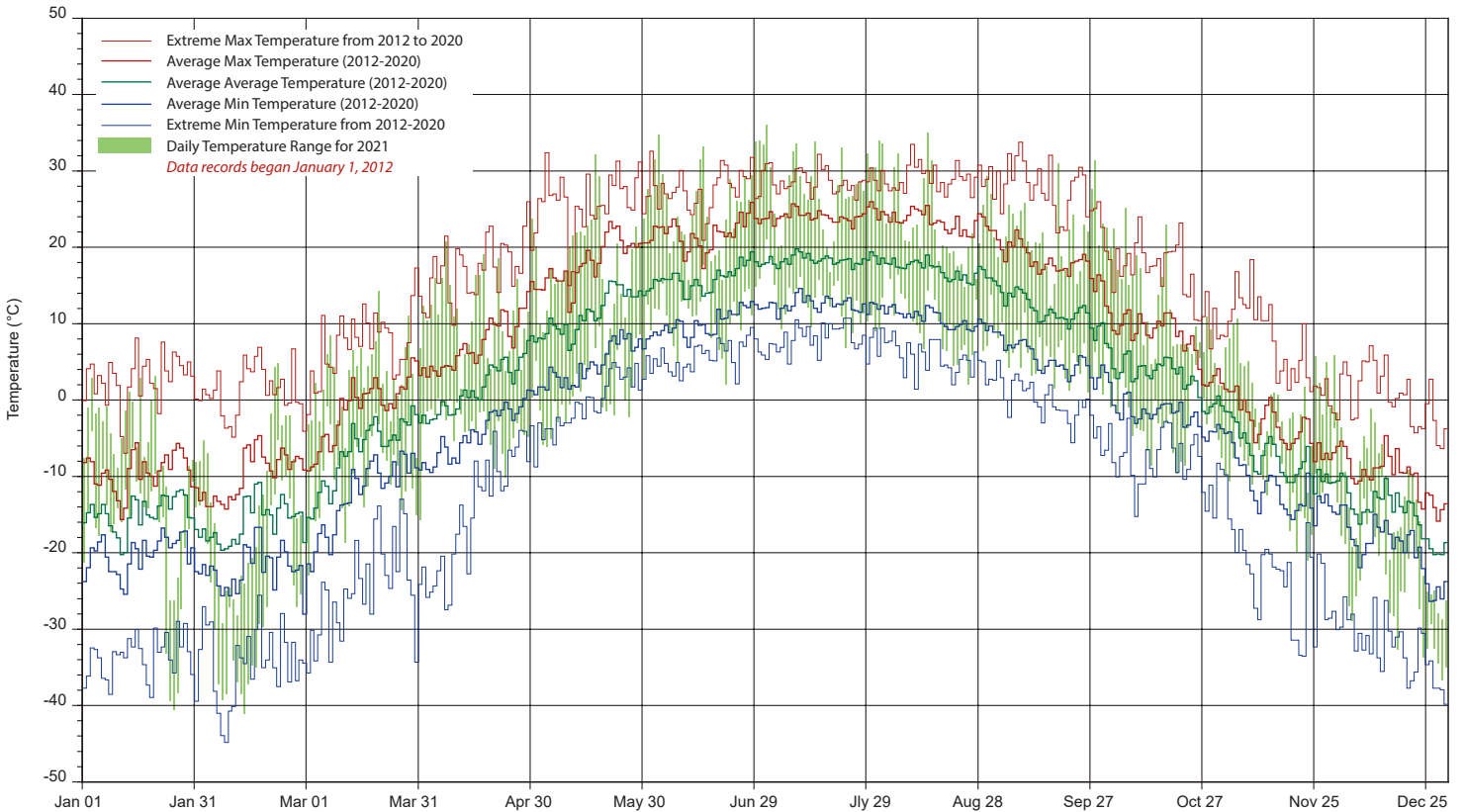
1/2 hr Maximum Wind Speed and Direction CLC December 2021



SRC's CLIMATE REFERENCE STATION at the Conservation Learning Centre 2021 PRECIPITATION AND AVERAGE



2021 TEMPERATURES AND AVERAGES



SRC proudly recognizes the following CRS supporters:

