



SRC CLIMATE REFERENCE STATION DAILY DATA REPORT

CONSERVATION LEARNING CENTRE

Saskatchewan 53.03°N 105.77°W 451m asl Estab. 2011

Preliminary **December 2024**

Day	Temperature (HMP155A)						Degree-days			Precipitation			Relative Humidity (HMP115A)		Station Pressure <i>corrected to sea level</i>	
	Max	Avg Max	Min	Avg Min	Mean	Avg Mean	Growing	Heating	Cooling	Geonor all-season ppt Gauge	Comments	Snow-on-Ground 0900h	Max ½ hr Avg	Min ½ hr Avg	Max ½ hr Avg	Min ½ hr Avg
	°C	2012-2021	°C	2012-2021	°C	2012-2021	5°C base	18°C base	18°C base	mm		cm	%	%	mbar	mbar
1	-18.1	-4.6	-33.2	-13.3	-25.7	-9.0	0.0	43.7	0.0	0.9		26	81	70	1034	1025
2	-10.6	-5.3	-29.7	-14.5	-20.2	-9.9	0.0	38.2	0.0	0.1		26	82	74	1033	1011
3	1.8	-4.7	-17.9	-13.9	-8.1	-9.3	0.0	26.1	0.0	0.0		29	89	70	1020	1004
4	-16.0	-5.5	-24.1	-13.8	-20.1	-9.7	0.0	38.1	0.0	0.0		27	81	65	1030	1021
5	-5.1	-7.5	-19.7	-17.0	-12.4	-12.3	0.0	30.4	0.0	0.1		27	96	72	1027	1013
6	1.4	-10.2	-13.9	-18.5	-6.3	-14.4	0.0	24.3	0.0	0.0		27	97	81	1013	1001
7	3.2	-10.5	-7.7	-18.7	-2.3	-14.7	0.0	20.3	0.0	0.0		26	95	69	1003	1000
8	-0.3	-8.8	-7.5	-20.2	-3.9	-14.5	0.0	21.9	0.0	0.1		26	94	86	1011	998
9	-4.4	-7.6	-14.8	-18.1	-9.6	-12.9	0.0	27.6	0.0	0.3		26	91	78	1017	1012
10	-6.5	-9.1	-29.8	-18.1	-18.2	-13.6	0.0	36.2	0.0	0.3		26	84	59	1025	1016
11	-25.4	-8.9	-37.8	-17.4	-31.6	-13.2	0.0	49.6	0.0	0.0		25	78	70	1025	1023
12	-17.1	-7.9	-39.7	-15.1	-28.4	-11.5	0.0	46.4	0.0	0.0		25	76	68	1024	1014
13	-11.2	-9.1	-19.1	-18.6	-15.2	-13.9	0.0	33.2	0.0	0.0		26	84	74	1013	1008
14	-8.7	-9.4	-22.7	-18.1	-15.7	-13.8	0.0	33.7	0.0	0.0		25	89	81	1009	1003
15	-9.9	-6.4	-16.3	-17.5	-13.1	-12.0	0.0	31.1	0.0	0.0		25	89	83	1013	1002
16	-9.3	-9.3	-16.5	-18.9	-12.9	-14.2	0.0	30.9	0.0	0.0		25	92	73	1019	1013
17	-13.1	-10.2	-29.9	-20.0	-21.5	-15.1	0.0	39.5	0.0	0.0		26	78	63	1032	1019
18	-21.8	-8.4	-36.7	-20.1	-29.3	-14.3	0.0	47.3	0.0	0.0		26	77	71	1032	1019
19	-18.7	-9.8	-30.3	-19.4	-24.5	-14.6	0.0	42.5	0.0	0.0		26	81	68	1031	1023
20	-11.7	-9.5	-31.7	-20.1	-21.7	-14.8	0.0	39.7	0.0	0.0		26	87	73	1030	1016
21	-8.7	-8.2	-18.6	-17.5	-13.7	-12.9	0.0	31.7	0.0	0.0		25	91	85	1016	1010
22	-9.7	-9.7	-16.0	-17.4	-12.9	-13.6	0.0	30.9	0.0	0.0		26	90	87	1013	1010
23	-8.6	-10.3	-14.7	-20.5	-11.7	-15.4	0.0	29.7	0.0	0.0		26	92	88	1013	1009
24	-2.5	-12.4	-15.6	-19.6	-9.1	-16.0	0.0	27.1	0.0	0.0		25	96	79	1011	999
25	2.7	-13.9	-13.3	-22.3	-5.3	-18.1	0.0	23.3	0.0	0.0		26	89	56	1003	998
26	-5.0	-13.0	-16.6	-23.9	-10.8	-18.5	0.0	28.8	0.0	0.0		26	88	68	1003	998
27	-4.5	-13.2	-15.9	-25.8	-10.2	-19.5	0.0	28.2	0.0	4.9		26	93	83	998	995
28	-3.0	-14.8	-12.0	-26.6	-7.5	-20.7	0.0	25.5	0.0	1.4		33	92	83	1001	995
29	-3.6	-16.2	-10.0	-24.7	-6.8	-20.5	0.0	24.8	0.0	0.0		33	87	79	1007	1002
30	-4.2	-15.5	-13.9	-26.4	-9.1	-21.0	0.0	27.1	0.0	0.1		34	87	71	1018	1008
31	-12.0	-14.9	-18.9	-24.9	-15.5	-19.9	0.0	33.5	0.0	0.1		33	76	68	1020	1018
Total							0.0	1011.3	0.0	8.3			Extreme / Date	Extreme / Date	Extreme / Date	Extreme / Date
Avg	-8.4	-9.8	-20.8	-19.4	-14.6	-14.6	Monthly 2012 - 2021 Average			10.3	2012-2021 Average					
Extreme	3.2	7.1	-39.7	-39.9			0	1008.8	0	396.4	2024 Cumulative ppt		97	56	1034	995
Date	7	2014	12	2013						378.6	Cumulative Average		6	25	1	27

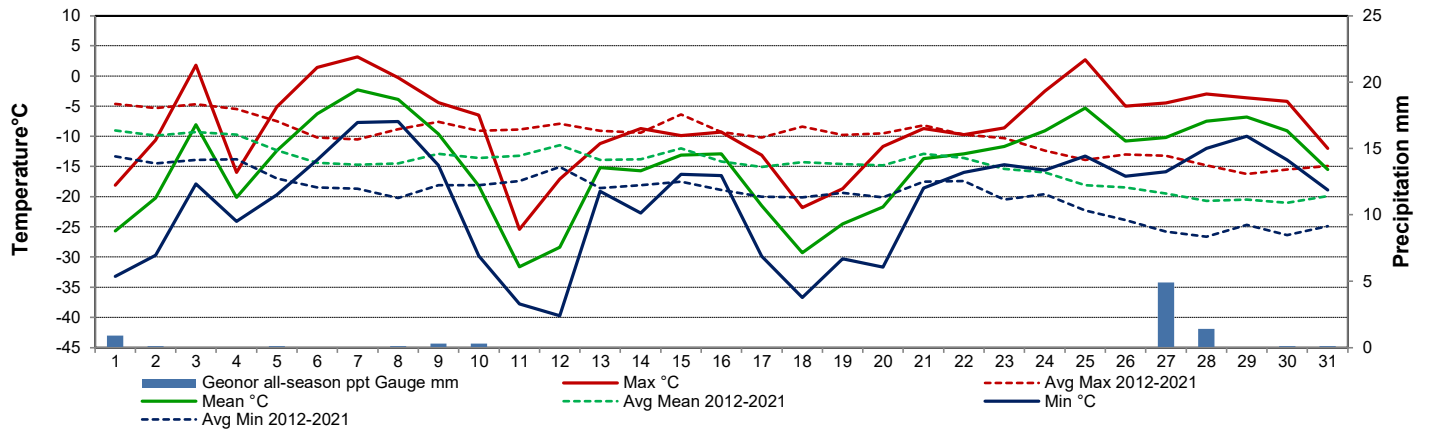
Note: Red numbers indicate manual calculation; Red cell indicate data not available

Precipitation is measured precipitation. It has not been corrected for wind speed.

SRC proudly recognizes the following CRS supporters:



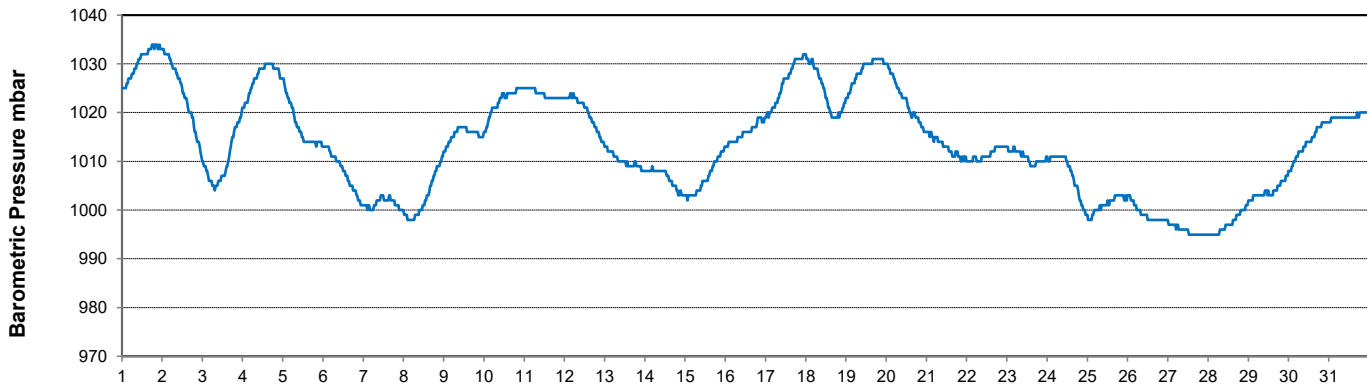
Temperature and Precipitation for December 2024



Relative Humidity for December 2024



Barometric Pressure Corrected to Sea Level for December 2024





SRC CLIMATE REFERENCE STATION DAILY DATA REPORT

CONSERVATION LEARNING CENTRE

Saskatchewan 53.03°N 105.77°W 451m asl Estab. 2011

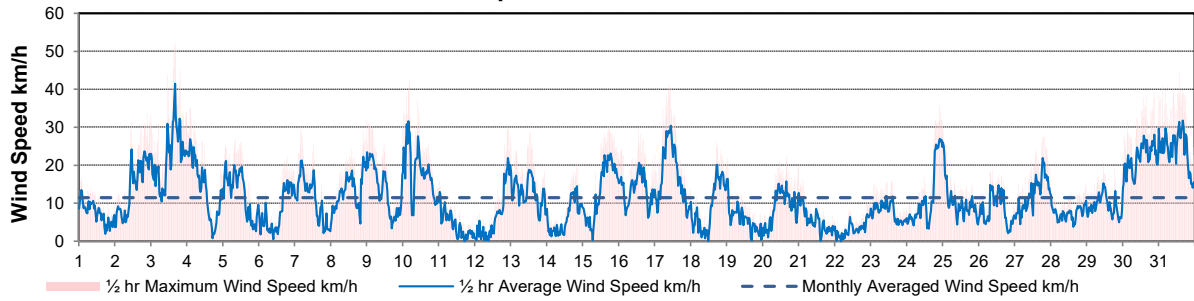
Preliminary **December 2024**

Day	Wind Gust (10 meter)			Wind Speed (10 meters) Daily Average	Soil Temperatures at 0900hrs								Radiation				
	Max	Direction	Time		Surface	5 cm	10 cm	20 cm	50 cm	100 cm	150 cm	300 cm	Bright Sunshine	Possible	% Possible	Global	Diffuse
	km/h				°C	°C	°C	°C	°C	°C	°C	°C	hours	hours		MJ/m ²	MJ/m ²
1	16.6	ENE	1:32	7.5	-22.5	-3.5	-3.0	-1.0	0.5	3.5	5.5	7.0	6.2	7.9	78.3	5.6	1.5
2	33.3	SSW	21:39	14.1	-19.0	-3.5	-3.0	-1.5	0.5	3.5	5.5	7.0	0.9	7.9	11.4	2.7	2.2
3	52.0	NNW	16:33	22.1	-5.5	-2.5	-2.5	-1.0	0.0	3.5	5.0	7.0	0.0	7.9	0.0	2.0	2.0
4	35.0	NW	2:30	13.7	-21.5	-2.0	-1.5	-1.0	0.0	3.5	5.0	7.0	2.4	7.8	30.7	3.2	2.7
5	27.1	SSW	8:49	12.5	-12.0	-2.0	-2.0	-1.0	0.0	3.0	5.0	7.0	0.0	7.8	0.0	2.2	2.1
6	22.0	WSW	19:08	7.9	-11.0	-1.5	-1.5	-1.0	0.0	3.0	5.0	7.0	0.0	7.8	0.0	1.9	1.8
7	30.2	W	4:24	11.0	1.5	-1.5	-1.5	-1.0	0.0	3.0	4.5	6.5	3.3	7.7	42.6	2.7	2.3
8	29.1	NW	21:46	13.2	-1.5	-1.0	-1.0	-0.5	0.0	3.0	4.5	6.5	0.0	7.7	0.0	1.2	1.2
9	31.6	NW	0:16	13.6	-11.0	-1.0	-1.0	-0.5	0.5	3.0	4.5	6.5	0.0	7.7	0.0	2.3	2.3
10	42.6	N	4:36	18.0	-17.0	-1.0	-1.0	-0.5	0.5	3.0	4.5	6.5	6.6	7.7	86.0	3.5	1.1
11	15.9	NW	0:58	4.3	-29.5	-2.5	-2.0	-0.5	0.5	3.0	4.5	7.0	1.5	7.7	19.6	2.0	1.6
12	30.8	S	22:29	6.6	-33.5	-3.5	-2.5	-1.0	0.5	3.0	4.5	6.5	5.2	7.6	68.2	3.8	1.2
13	28.6	S	13:09	12.9	-16.0	-3.5	-3.0	-1.5	0.0	3.0	4.5	6.5	3.2	7.6	42.0	2.9	2.4
14	20.6	E	20:26	6.3	-19.0	-3.0	-2.5	-1.5	0.0	2.5	4.5	6.5	3.2	7.6	42.1	2.4	1.9
15	30.2	N	17:15	13.4	-12.0	-2.5	-2.5	-1.5	0.0	2.5	4.5	6.5	0.0	7.6	0.0	2.1	2.0
16	29.3	NW	13:26	13.6	-8.5	-2.5	-2.5	-1.5	0.0	2.5	4.0	6.5	0.0	7.6	0.0	1.6	1.6
17	41.0	NW	9:47	17.4	-19.0	-2.5	-2.0	-1.0	0.0	2.5	4.0	6.5	6.4	7.6	84.5	3.3	1.0
18	26.4	NE	17:25	9.0	-31.0	-4.0	-3.0	-1.5	0.0	2.5	4.0	6.5	0.0	7.6	0.0	2.2	2.0
19	21.8	NE	0:33	5.7	-24.5	-4.0	-3.5	-2.0	-0.5	2.5	4.0	6.5	0.0	7.6	0.0	2.1	2.0
20	22.3	ESE	15:42	9.0	-21.0	-4.5	-4.0	-2.0	-0.5	2.5	4.0	6.5	0.0	7.6	0.0	2.0	1.9
21	19.9	SSW	0:04	5.2	-10.5	-3.5	-3.0	-2.0	-0.5	2.0	4.0	6.5	0.1	7.6	1.3	1.6	1.5
22	10.1	SSW	23:58	3.3	-9.5	-3.0	-3.0	-2.0	-0.5	2.0	4.0	6.5	0.0	7.6	0.0	1.4	1.3
23	15.7	S	13:58	7.8	-11.5	-2.5	-2.5	-1.5	-0.5	2.0	4.0	6.0	0.0	7.6	0.0	1.2	1.2
24	35.9	S	22:19	11.8	-10.0	-2.5	-2.5	-1.5	-0.5	2.0	3.5	6.0	1.5	7.6	19.8	2.1	1.2
25	30.3	S	0:29	10.4	-2.5	-2.5	-2.5	-1.5	-0.5	2.0	3.5	6.0	4.8	7.6	63.3	2.7	1.2
26	18.8	S	9:24	8.3	-5.0	-2.5	-2.0	-1.5	-0.5	2.0	3.5	6.0	6.1	7.6	80.4	3.1	0.8
27	27.5	E	19:05	12.5	-5.5	-2.5	-2.5	-1.5	-0.5	2.0	3.5	6.0	0.0	7.6	0.0	1.5	1.4
28	15.5	SW	23:34	7.4	-7.5	-2.0	-2.0	-1.5	-0.5	2.0	3.5	6.0	0.1	7.6	1.3	2.0	1.9
29	20.0	SW	11:20	9.4	-5.0	-2.0	-2.0	-1.5	-0.5	1.5	3.5	6.0	0.0	7.6	0.0	1.9	1.8
30	38.9	NW	21:07	21.9	-7.5	-1.5	-2.0	-1.0	-0.5	1.5	3.5	6.0	0.0	7.7	0.0	2.0	1.9
31	44.7	NW	13:53	24.2	-9.5	-1.5	-1.5	-1.0	-0.5	1.5	3.5	6.0	4.9	7.7	64.0	3.8	1.8
Total													56.4	237.3	23.8	75.0	52.8
Mean				11.4	-13.5	-2.5	-2.3	-1.3	-0.1	2.5	4.2	6.5					
Extreme	52.0	NNW	16:33														
Date	3																

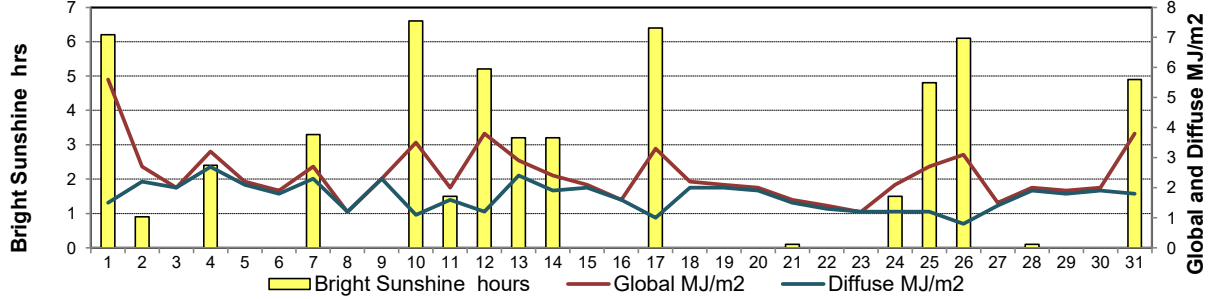
GLOSSARY OF TERMS

Degree-days	Radiation
T_m Mean Temperature	Bright Sunshine is the unobstructed direct radiation from the sun, as opposed to the shading of a location by clouds or by other atmospheric obstructions.
Growing (T _m -5°C); if T _m ≤ 5°C then GDD = 0	
Heating (18°C-T _m); if T _m ≥ 18°C then HDD = 0	
Cooling (T _m -18°C); if T _m ≤ 18°C then CDD = 0	Diffuse is radiation reaching the earth's surface after having been scattered from the direct solar beam
T Trace of Precipitation	Global is the sum of the direct solar and diffuse radiation
SOG Depth of snow-on-the-ground	Relative Humidity The ratio of the air's water vapour content of its water vapour capacity which changes with temperature.
Red Cell no data available	Air Pressure The force exerted by the weight of a column of air above a given point
Red Number manual calculation	Wind Gust The daily highest instantaneous value recorded irrespective of direction and/or duration

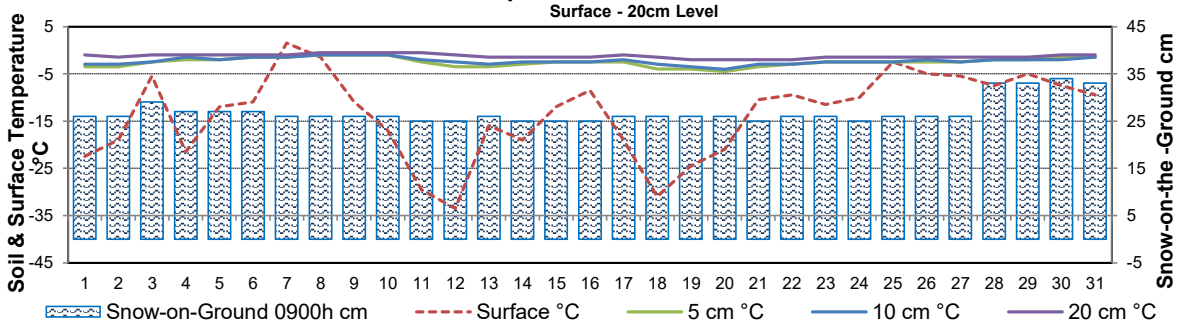
Wind Speed for December 2024



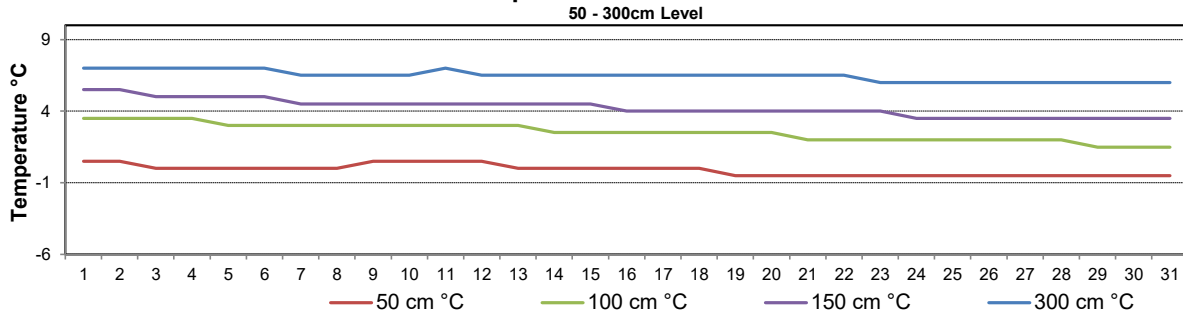
Global and Diffuse Radiation for December 2024



Soil Temperatures for December 2024



Soil Temperatures for December 2024



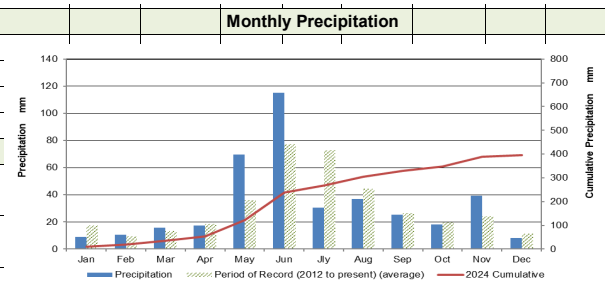
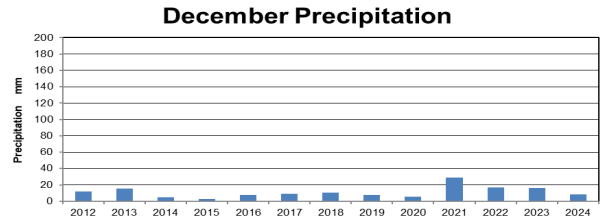
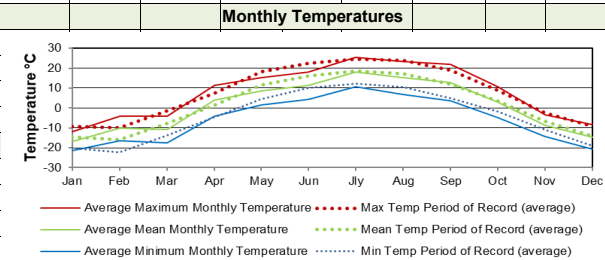
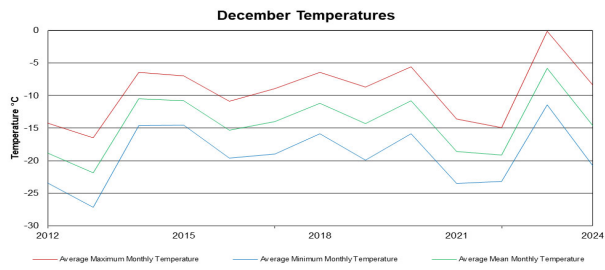


SRC CLIMATE REFERENCE STATION DAILY DATA REPORT CONSERVATION LEARNING CENTRE

Saskatchewan 53.03°N 105.77°W 451m asl Estab. 2011

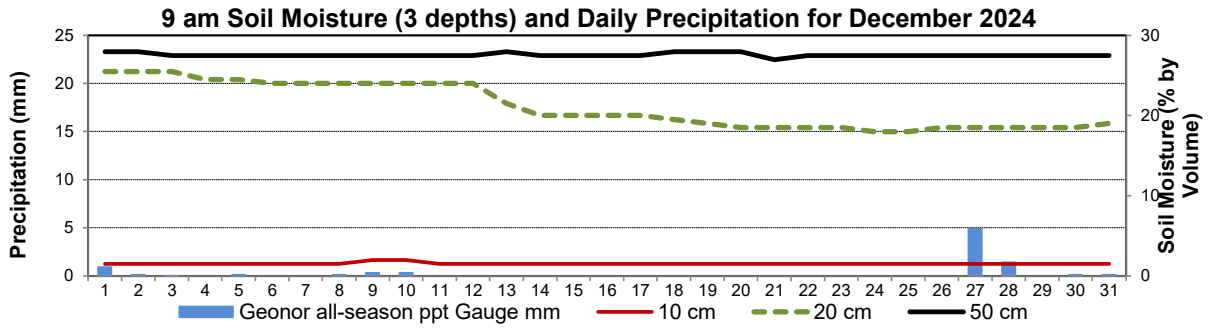
Preliminary **December 2024**

Day	2 meter Wind Speed			Soil Moisture at 0900 hrs (rounded to the 0.5%)		
	Daily Average	Max ½ hr Avg	½ hr Extreme Max	10 cm	20 cm	50 cm
	km/h	km/h	km/h	% by volume (soil type is Clay Loam)		
1	5.0	11.4	14.1	1.5	25.5	28.0
2	12.0	20.6	28.5	1.5	25.5	28.0
3	18.0	32.7	45.8	1.5	25.5	27.5
4	11.0	20.8	27.9	1.5	24.5	27.5
5	11.0	17.8	24.8	1.5	24.5	27.5
6	5.0	13.9	19.5	1.5	24.0	27.5
7	7.0	16.2	24.1	1.5	24.0	27.5
8	9.0	17.7	23.7	1.5	24.0	27.5
9	11.0	18.7	27.3	2.0	24.0	27.5
10	14.0	25.2	38.9	2.0	24.0	27.5
11	1.0	8.5	11.4	1.5	24.0	27.5
12	4.0	18.1	26.0	1.5	24.0	27.5
13	10.0	15.6	24.1	1.5	21.5	28.0
14	4.0	12.6	17.7	1.5	20.0	27.5
15	10.0	18.9	25.2	1.5	20.0	27.5
16	11.0	16.8	22.9	1.5	20.0	27.5
17	14.0	23.8	32.9	1.5	20.0	27.5
18	6.0	16.7	21.4	1.5	19.5	28.0
19	4.0	11.7	17.0	1.5	19.0	28.0
20	6.0	13.5	18.1	1.5	18.5	28.0
21	4.0	11.1	17.4	1.5	18.5	27.0
22	1.0	2.8	4.3	1.5	18.5	27.5
23	2.0	3.0	4.7	1.5	18.5	27.5
24	4.0	20.8	27.2	1.5	18.0	27.5
25	5.0	19.9	24.1	1.5	18.0	27.5
26	5.0	11.6	15.1	1.5	18.5	27.5
27	9.0	18.5	24.3	1.5	18.5	27.5
28	6.0	10.5	13.9	1.5	18.5	27.5
29	9.0	13.6	17.6	1.5	18.5	27.5
30	18.0	22.5	31.8	1.5	18.5	27.5
31	20.0	3.0	33.0	1.5	19.0	27.5
Total						
Mean				2	21	27.6
Extreme	20.0	32.7	45.8	2	25.5	28
Date	-1	-1.5	-1.5	-0.5	-1	-1

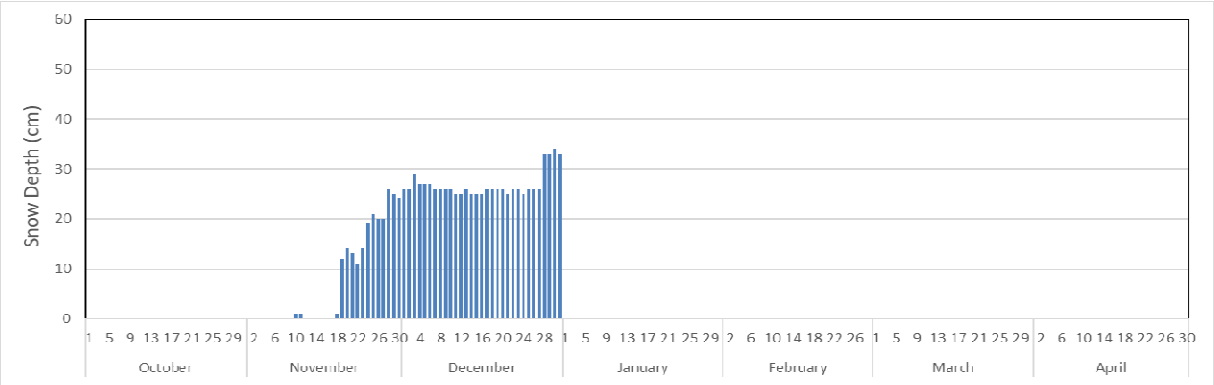


SRC proudly recognizes the following CRS supporters:

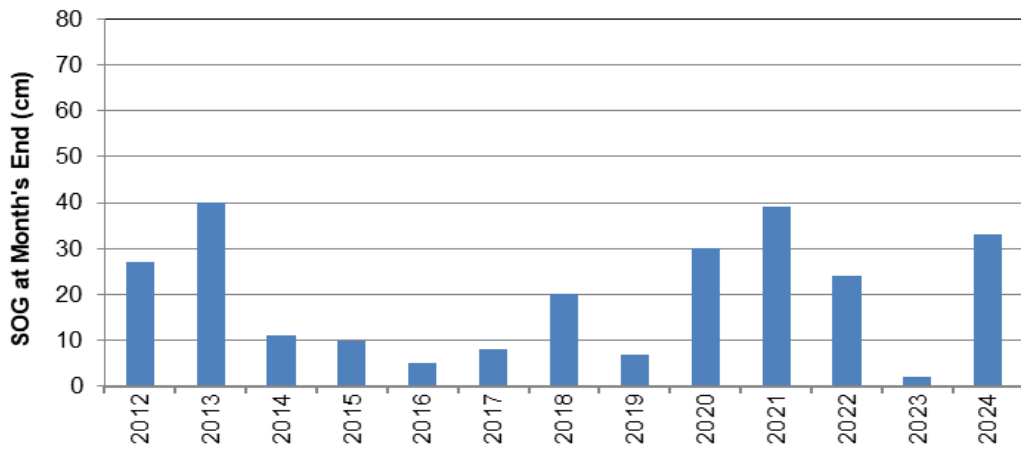




2024-2025 9 am Daily Snow Depth (Oct to April)

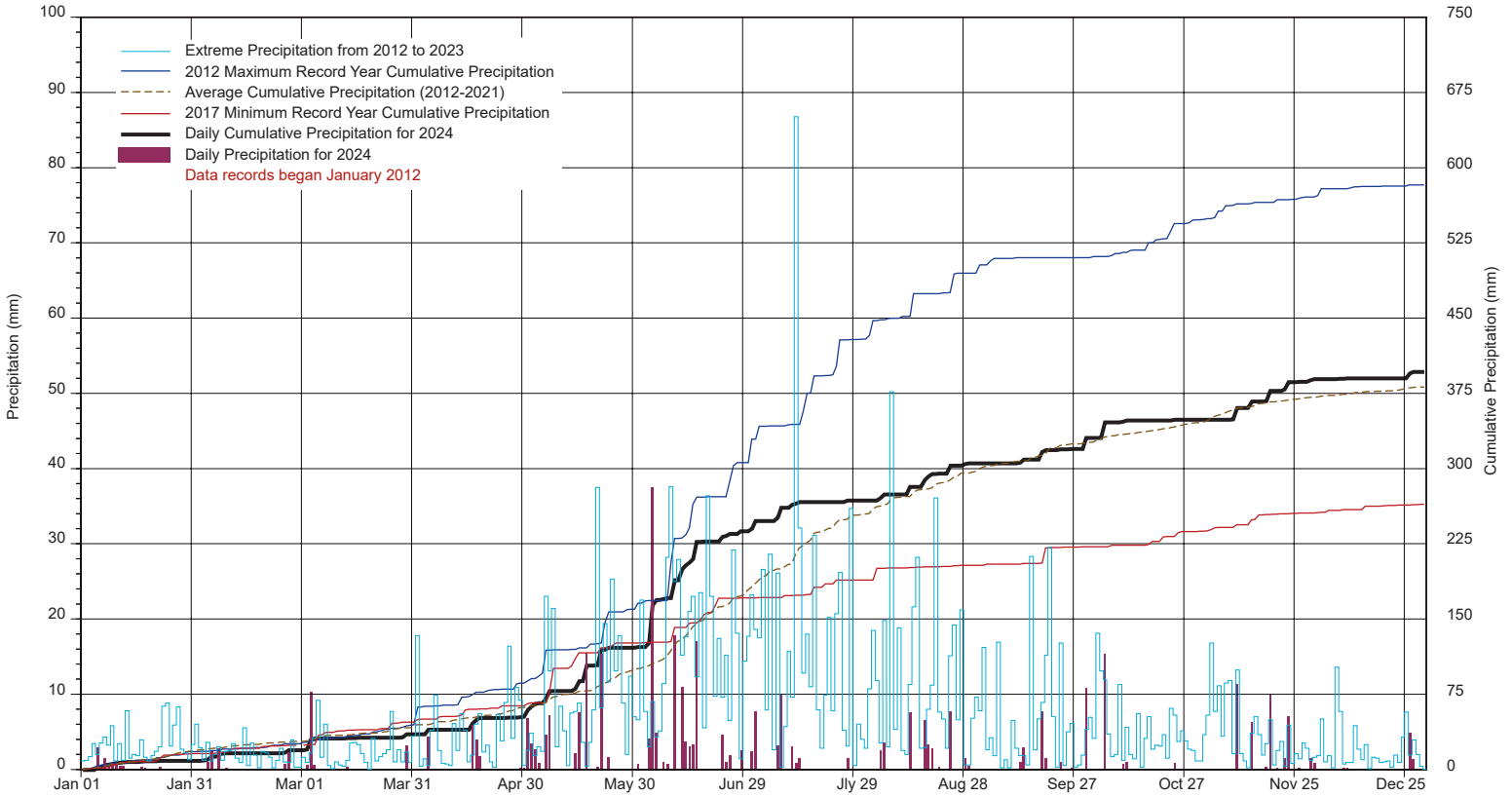


December End of Month Snow Depth (2012 to 2024)

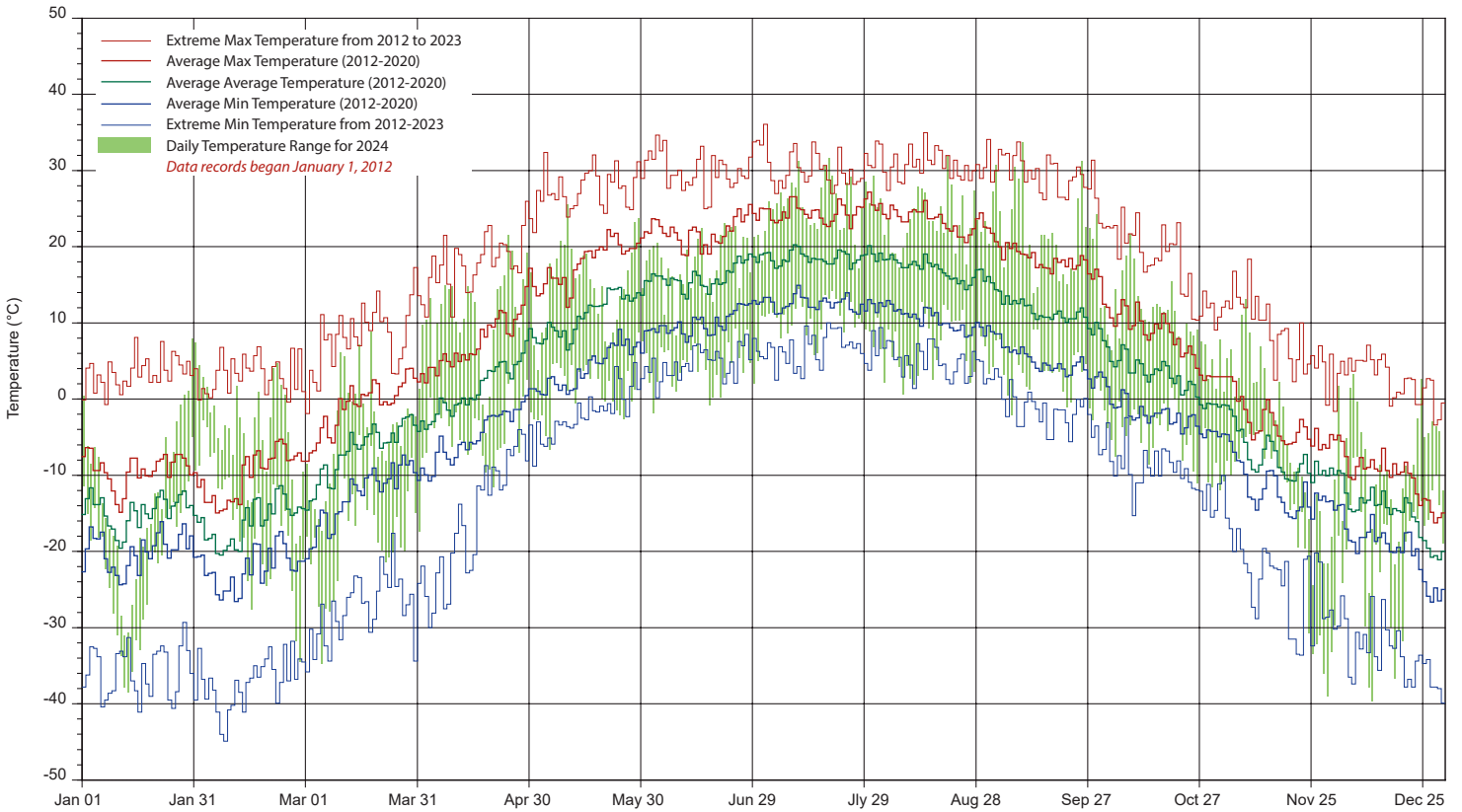


SRC's CLIMATE REFERENCE STATION at the Conservation Learning Centre

2024 PRECIPITATION AND AVERAGE



2024 TEMPERATURES AND AVERAGES



SRC proudly recognizes the following CRS supporters:

