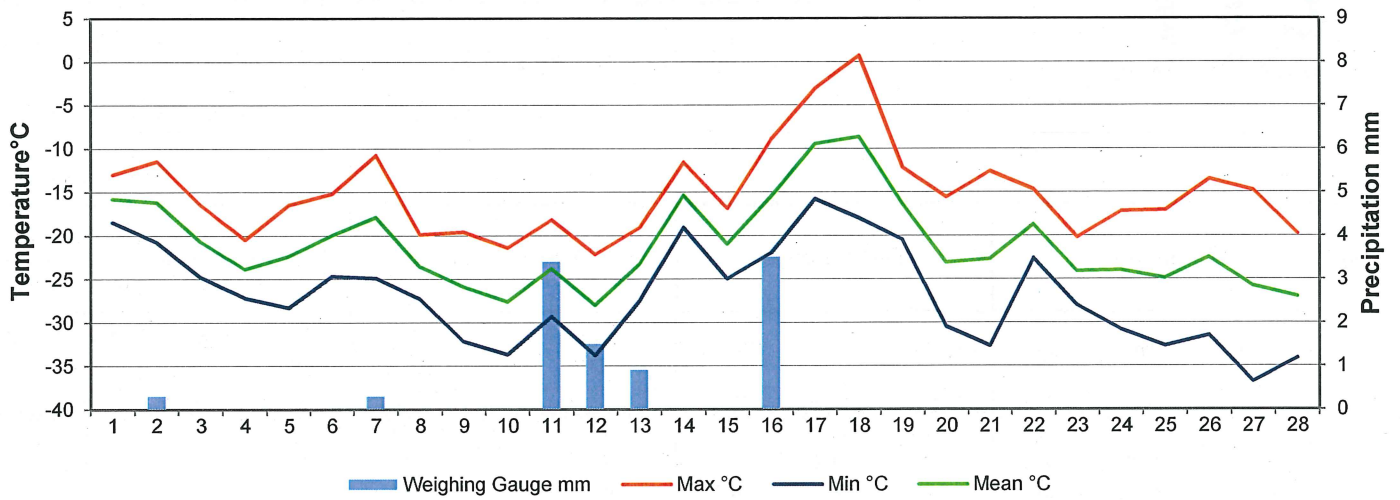
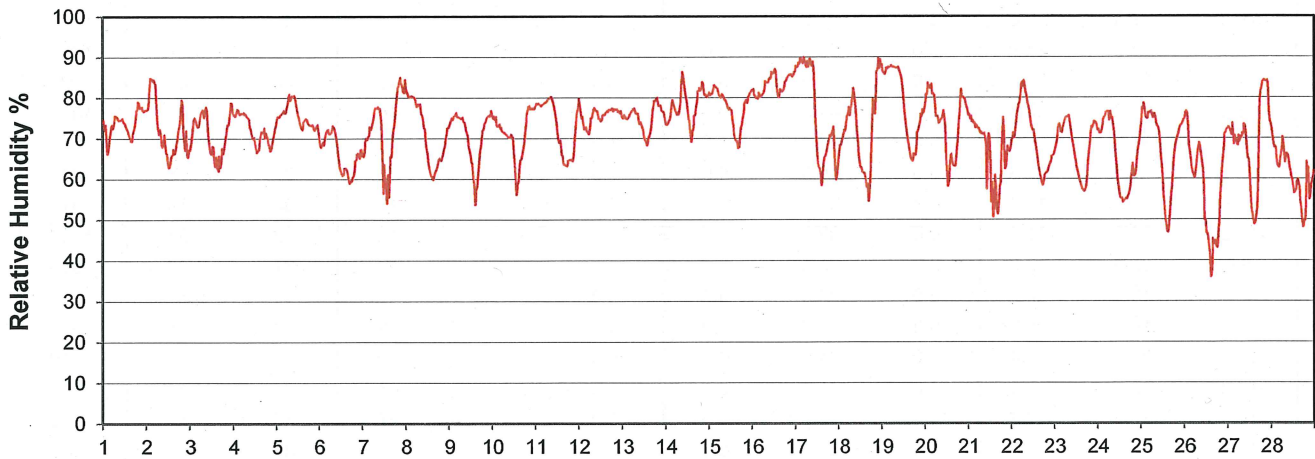




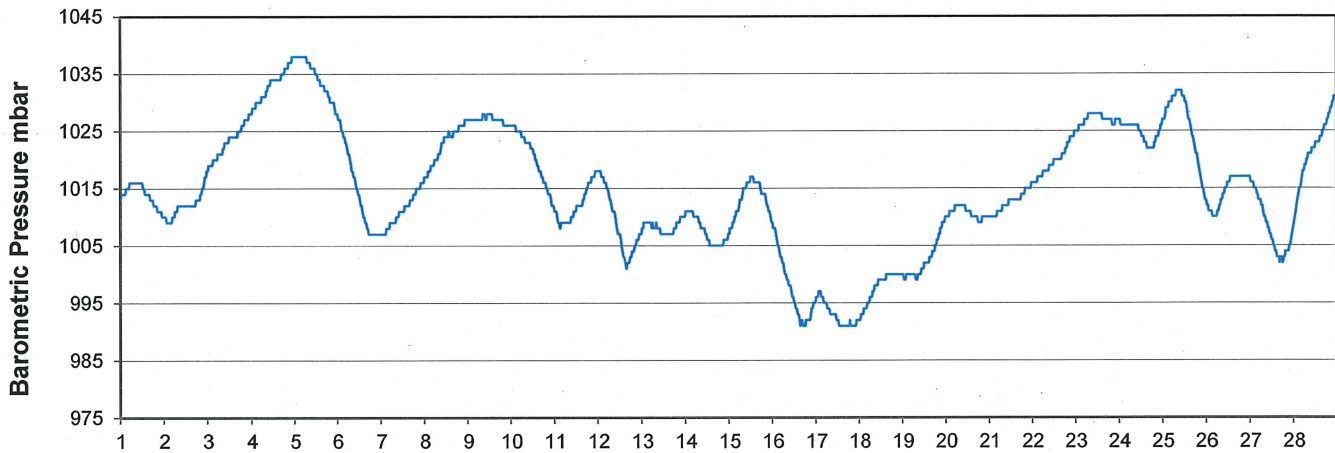
### Temperature and Precipitation for February 2014



### Relative Humidity for February 2014

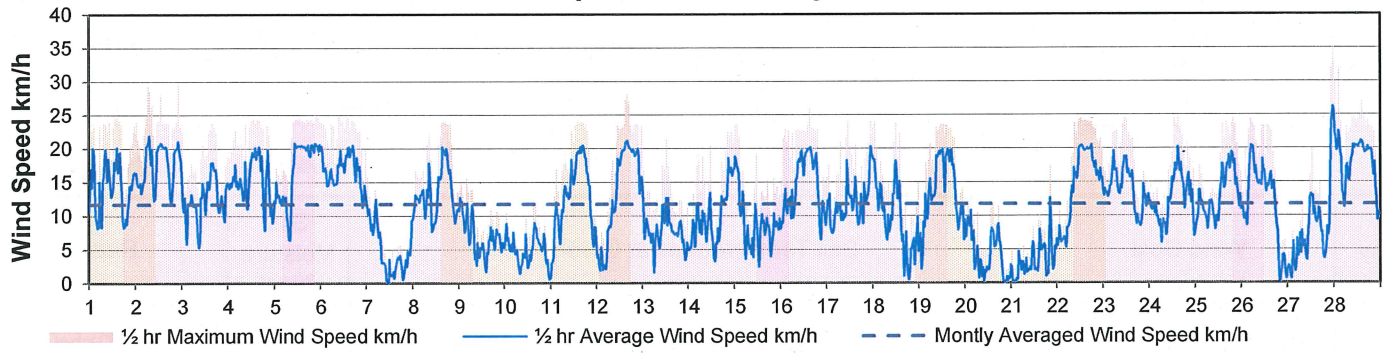


### Barometric Pressure Corrected to Sea Level for February 2014

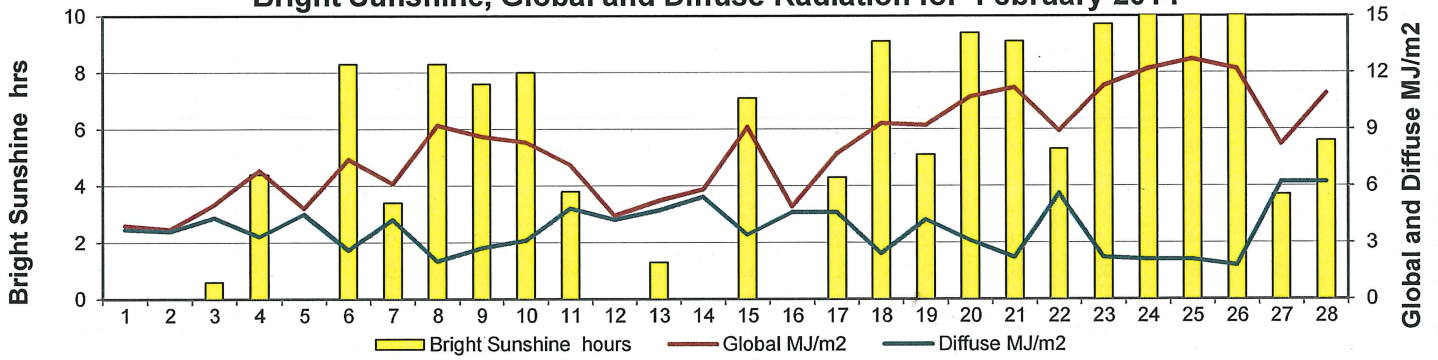




### Wind Speed for February 2014

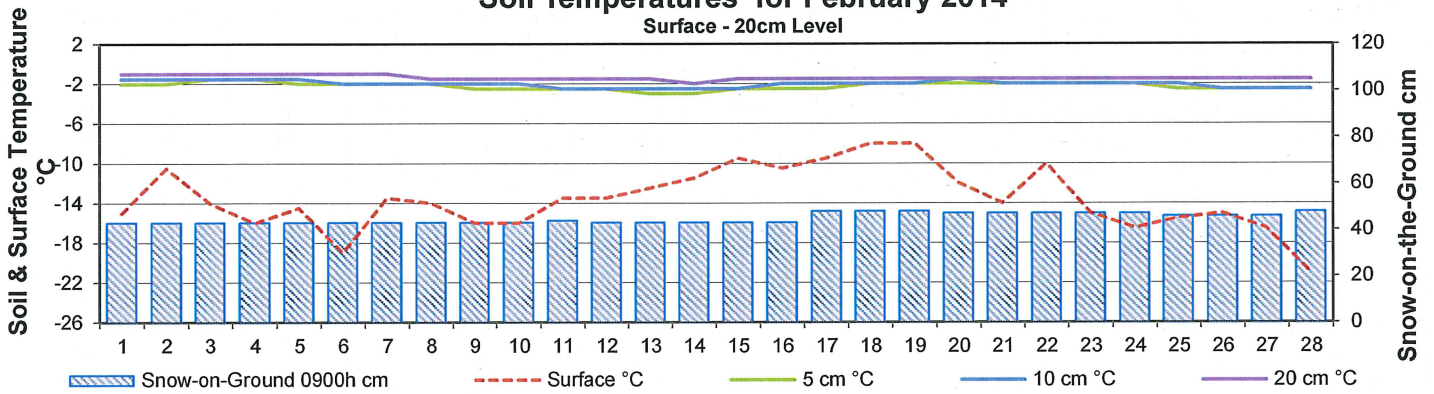


### Bright Sunshine, Global and Diffuse Radiation for February 2014



### Soil Temperatures for February 2014

Surface - 20cm Level



### Soil Temperatures for February 2014

50 - 300cm Level

