



SRC CLIMATE REFERENCE STATION DAILY DATA REPORT

CONSERVATION LEARNING CENTRE

Saskatchewan 53.03°N 105.77°W Estab. 2011

Preliminary **February 2019**

Day	Temperature			Degree-days			Precipitation			Relative Humidity		Station Pressure <i>corrected to sea level</i>	
	Max	Min	Mean	Growing	Heating	Cooling	Weighing Gauge	Notes	Snow-on-Ground 0900h	Max ½ hr Avg	Min ½ hr Avg	Max ½ hr Avg	Min ½ hr Avg
	°C	°C	°C	5°C base	18°C base	18°C base	mm		cm	%	%	mbar	mbar
1	-14.2	-21.2	-17.7	0.0	35.7	0.0	1.1		52	87	70	1015	1006
2	-21.1	-24.8	-23.0	0.0	41.0	0.0	2.9		45	82	73	1015	1008
3	-24.1	-28.2	-26.2	0.0	44.2	0.0	0.0		49	79	69	1024	1015
4	-24.6	-26.9	-25.8	0.0	43.8	0.0	2.1		49	82	73	1026	1022
5	-21.7	-38.2	-30.0	0.0	48.0	0.0	0.5		51	83	66	1025	1020
6	-20.9	-41.1	-31.0	0.0	49.0	0.0	0.0		51	83	61	1031	1025
7	-25.9	-44.0	-35.0	0.0	53.0	0.0	0.0		50	80	57	1032	1028
8	-27.4	-44.9	-36.2	0.0	54.2	0.0	0.0		50	83	63	1036	1028
9	-19.9	-40.8	-30.4	0.0	48.4	0.0	0.0		50	82	60	1039	1033
10	-23.5	-40.2	-31.9	0.0	49.9	0.0	0.0		50	84	67	1033	1021
11	-18.3	-30.0	-24.2	0.0	42.2	0.0	1.6		51	88	80	1021	1016
12	-19.3	-32.2	-25.8	0.0	43.8	0.0	0.3		51	89	68	1018	1013
13	-15.0	-34.6	-24.8	0.0	42.8	0.0	0.0		52	84	54	1013	1006
14	-16.7	-31.0	-23.9	0.0	41.9	0.0	0.1		52	87	64	1018	1010
15	-20.2	-36.6	-28.4	0.0	46.4	0.0	0.0		53	86	73	1019	1016
16	-13.7	-30.1	-21.9	0.0	39.9	0.0	0.0		52	86	75	1022	1014
17	-16.5	-23.0	-19.8	0.0	37.8	0.0	0.8		48	88	75	1031	1022
18	-16.8	-33.2	-25.0	0.0	43.0	0.0	0.1		48	87	61	1031	1019
19	-14.3	-26.4	-20.4	0.0	38.4	0.0	0.0		50	84	68	1019	1004
20	-11.1	-18.4	-14.8	0.0	32.8	0.0	1.0		54	91	77	1015	1004
21	-9.1	-28.0	-18.6	0.0	36.6	0.0	0.1		57	91	55	1021	1015
22	-15.7	-29.0	-22.4	0.0	40.4	0.0	0.0		57	88	73	1017	1010
23	-14.1	-24.0	-19.1	0.0	37.1	0.0	0.1		54	88	67	1026	1010
24	-20.0	-31.8	-25.9	0.0	43.9	0.0	0.1		53	84	57	1029	1026
25	-13.8	-37.0	-25.4	0.0	43.4	0.0	0.0		53	83	55	1027	1026
26	-15.3	-31.8	-23.6	0.0	41.6	0.0	0.0		53	85	63	1027	1017
27	-4.3	-15.3	-9.8	0.0	27.8	0.0	0.0		53	87	66	1017	1010
28	-10.7	-18.2	-14.5	0.0	32.5	0.0	0.3		53	87	53	1016	1013
Total				0.0	1179.5	0.0	11.1						
Avg	-17.4	-30.7	-24.1				36.1	Cumulative ppt					
Extreme	-4.3	-44.9					2.9		57	91	53	1039	1004
Date	27	8					2		21	20	28	9	19

Due to instrument limitations of the air temperature sensor, the minimum daily temperatures of Feb 7 and 8 were estimated using data from "Prince Albert Grass Field" and "Prince Albert A" Climate Stations operated by the Government of Canada

SRC proudly recognizes the following CRS supporters:



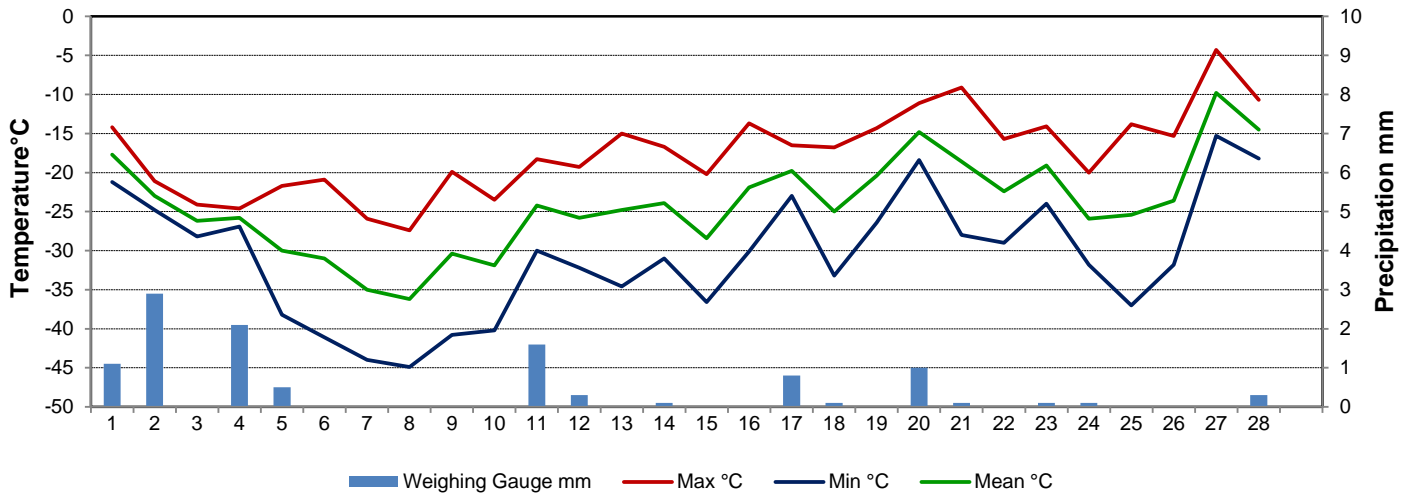
Agriculture and Agri-Food Canada

Agriculture et Agroalimentaire Canada

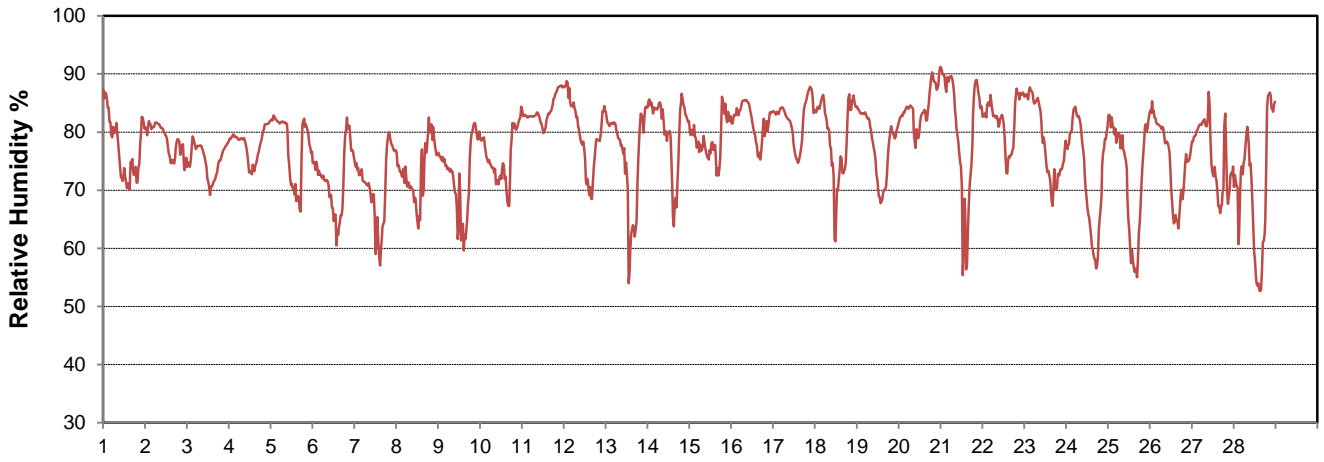


CAMPBELL SCIENTIFIC
WHEN MEASUREMENTS MATTER

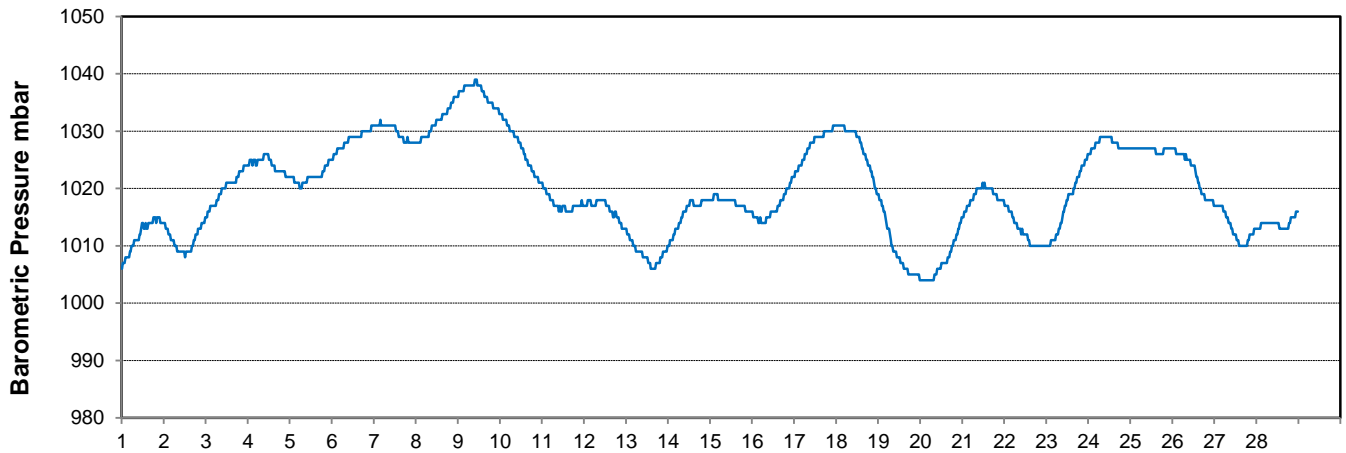
Temperature and Precipitation for February 2019



Relative Humidity for February 2019



Barometric Pressure Corrected to Sea Level for February 2019





SRC CLIMATE REFERENCE STATION DAILY DATA REPORT

CONSERVATION LEARNING CENTRE

Saskatchewan 53.03°N 105.77°W Estab. 2011

Preliminary

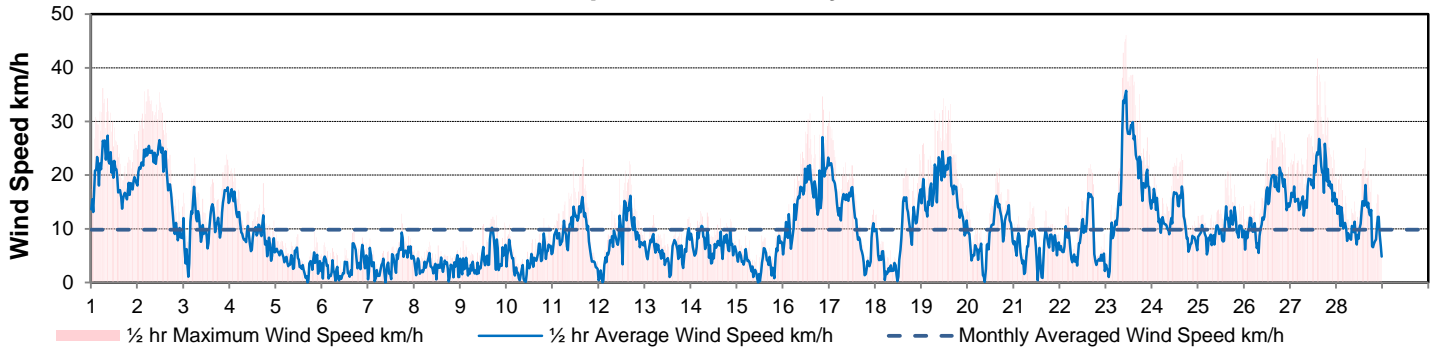
February 2019

Day	Wind Gust			Soil Temperatures at 0900hrs								Radiation				
	Max	Direction	Time	Surface	5 cm	10 cm	20 cm	50 cm	100 cm	150 cm	300 cm	Bright Sunshine	Bright Sunshine Possible	% Possible	Global	Diffuse
	km/h			°C	°C	°C	°C	°C	°C	°C	°C	hours	hours		MJ/m ²	MJ/m ²
1	36.2	N	6:22	-18.0	-2.0	-2.0	-1.0	0.0	1.5	2.5	4.5	0.0	9.0	0.0	3.8	3.6
2	36.0	E	5:42	-19.0	-2.0	-1.5	-1.0	0.0	1.5	2.5	4.5	0.2	9.1	2.2	3.7	3.4
3	23.9	NNE	22:59	-20.0	-2.0	-2.0	-1.0	0.0	1.0	2.5	4.5	2.0	9.1	21.9	4.7	4.0
4	21.3	NE	2:42	-18.5	-2.5	-2.0	-1.5	0.0	1.0	2.5	4.5	0.9	9.2	9.8	5.1	4.4
5	9.5	NW	20:12	-16.0	-2.5	-2.0	-1.5	0.0	1.0	2.5	4.5	8.0	9.3	86.4	8.4	2.1
6	9.6	S	17:12	-21.0	-2.5	-2.0	-1.5	0.0	1.0	2.5	4.5	8.9	9.3	95.5	7.5	3.1
7	12.8	S	17:49	-22.5	-2.5	-2.5	-1.5	0.0	1.0	2.5	4.5	9.0	9.4	95.9	8.9	3.4
8	7.6	WSW	8:22	-23.5	-3.0	-2.5	-2.0	0.0	1.0	2.0	4.5	8.3	9.5	87.8	8.3	4.1
9	12.5	S	19:15	-22.0	-3.0	-3.0	-2.0	0.0	1.0	2.0	4.5	9.2	9.5	96.7	9.9	4.7
10	12.0	E	19:48	-22.0	-3.5	-3.0	-2.0	0.0	1.0	2.0	4.5	8.5	9.6	88.8	9.1	5.4
11	23.0	ENE	16:01	-18.5	-3.5	-3.0	-2.0	0.0	1.0	2.0	4.5	0.0	9.6	0.0	4.9	4.4
12	22.6	SSW	16:23	-17.5	-3.0	-3.0	-2.0	-0.5	1.0	2.0	4.5	8.3	9.7	85.6	9.9	4.1
13	12.6	W	4:56	-19.5	-3.0	-2.5	-2.0	-0.5	1.0	2.0	4.5	8.3	9.8	85.0	10.1	4.3
14	13.3	W	5:25	-18.0	-3.0	-2.5	-2.0	-0.5	1.0	2.0	4.5	9.3	9.8	94.5	11.2	4.7
15	10.2	NE	21:49	-19.5	-3.0	-3.0	-2.0	-0.5	1.0	2.0	4.5	8.6	9.9	86.9	10.0	4.9
16	34.7	ENE	20:53	-18.5	-3.0	-3.0	-2.0	-0.5	1.0	2.0	4.0	1.7	10.0	17.1	6.6	4.5
17	31.9	ENE	0:18	-17.0	-3.0	-2.5	-2.0	-0.5	1.0	2.0	4.0	1.6	10.0	16.0	7.0	6.1
18	23.9	SW	23:23	-17.5	-2.5	-2.5	-2.0	-0.5	1.0	2.0	4.0	9.6	10.1	95.0	12.1	8.4
19	34.3	SW	11:33	-20.5	-3.0	-2.5	-2.0	-0.5	1.0	2.0	4.0	7.2	10.2	70.8	10.1	8.8
20	21.3	NE	16:40	-12.0	-3.0	-2.5	-2.0	-0.5	1.0	2.0	4.0	4.0	10.2	39.1	7.6	7.1
21	15.1	NNE	8:56	-11.0	-2.5	-2.5	-2.0	-0.5	1.0	2.0	4.0	7.9	10.3	76.7	9.4	4.1
22	22.1	S	16:09	-16.0	-2.5	-2.0	-2.0	-0.5	0.5	2.0	4.0	9.5	10.4	91.6	11.6	2.6
23	46.1	N	10:48	-14.0	-2.0	-2.0	-1.5	-0.5	0.5	2.0	4.0	3.8	10.4	36.4	8.7	6.2
24	24.0	NW	15:49	-17.0	-2.0	-2.0	-1.5	-0.5	0.5	2.0	4.0	10.2	10.5	97.1	12.9	2.3
25	20.7	NW	15:43	-19.0	-2.5	-2.0	-1.5	-0.5	0.5	2.0	4.0	10.2	10.6	96.4	12.4	2.3
26	29.8	SW	16:43	-18.5	-2.5	-2.5	-2.0	-0.5	0.5	2.0	4.0	9.0	10.7	84.5	12.9	3.9
27	41.7	WNW	14:00	-12.0	-3.0	-2.5	-2.0	-0.5	0.5	1.5	4.0	3.7	10.7	34.5	9.5	6.1
28	25.1	NNW	15:18	-11.0	-2.5	-2.5	-2.0	-0.5	0.5	1.5	4.0	7.8	10.8	72.4	11.5	4.2
Total												175.7	276.6		247.8	127.2
Mean				-17.8	-2.7	-2.4	-1.8	-0.3	0.9	2.1	4.3					
Extreme	46.1	N	10:48													
Date	23															

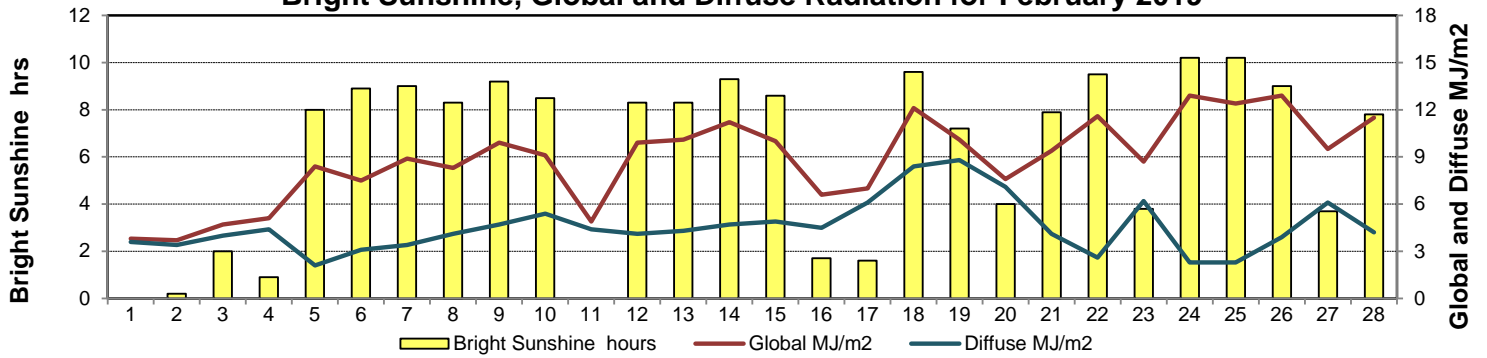
GLOSSARY OF TERMS

Degree-days	Radiation
Tm Mean Temperature	Bright Sunshine is the unobstructed direct radiation from the sun, as opposed to the shading of a location by clouds or by other atmospheric obstructions.
Growing (Tm-5°C); if Tm ≤ 5°C then GDD = 0	
Heating (18°C-Tm); if Tm ≥ 18°C then HDD =	
Cooling (Tm-18°C); if Tm ≤ 18°C then CDD =	Diffuse is radiation reaching the earth's surface after having been scattered from the direct solar beam
T Trace of Precipitation	Global is the sum of the direct solar and diffuse radiation
SOG Depth of snow-on-the-ground	Relative Humidity The ratio of the air's water vapour content to its water vapour capacity which changes with temperature.
Red Cell no data available	Air Pressure The force exerted by the weight of a column of air above a given point
Red Number manual calculation	Wind Gust The daily highest instantaneous value recorded irrespective of direction and/or duration

Wind Speed for February 2019

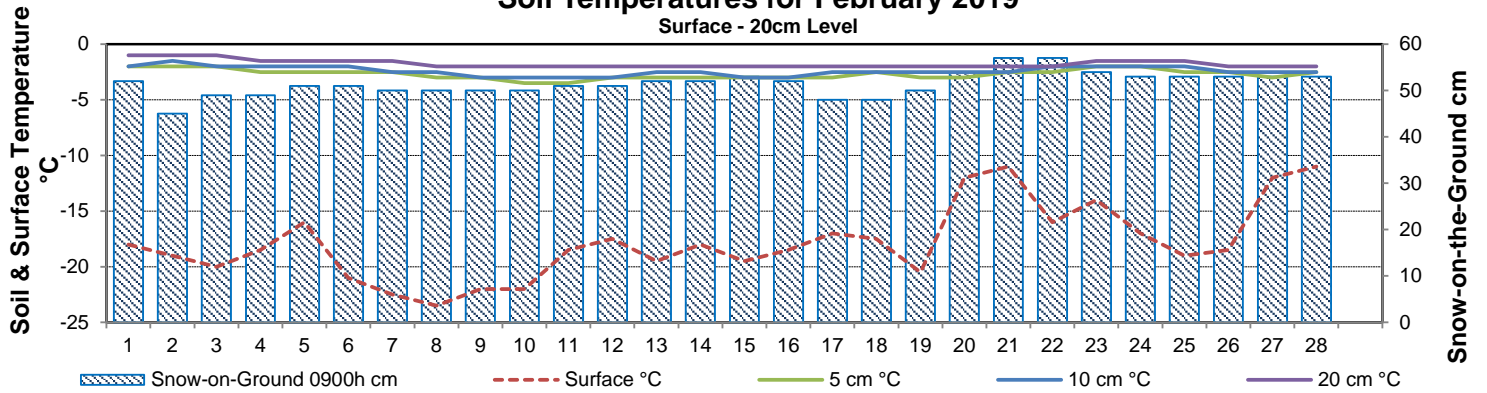


Bright Sunshine, Global and Diffuse Radiation for February 2019



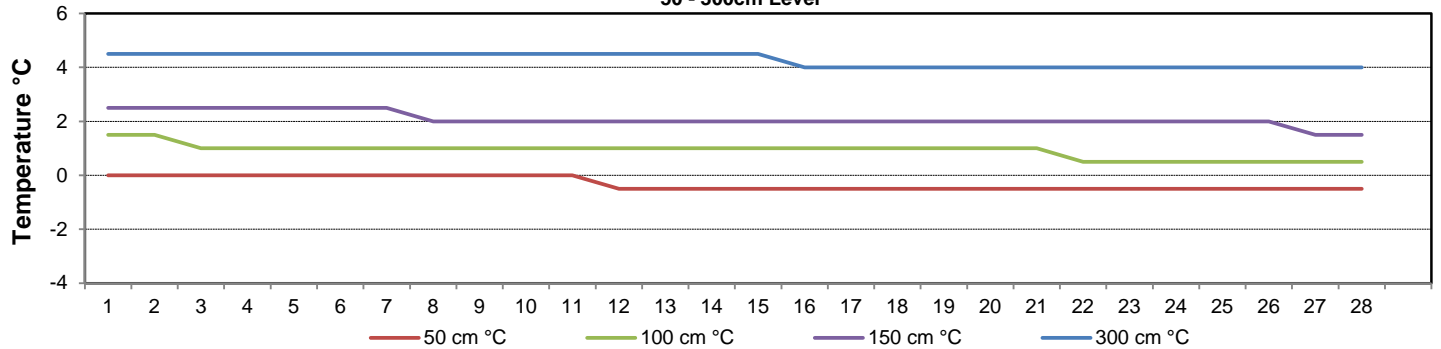
Soil Temperatures for February 2019

Surface - 20cm Level

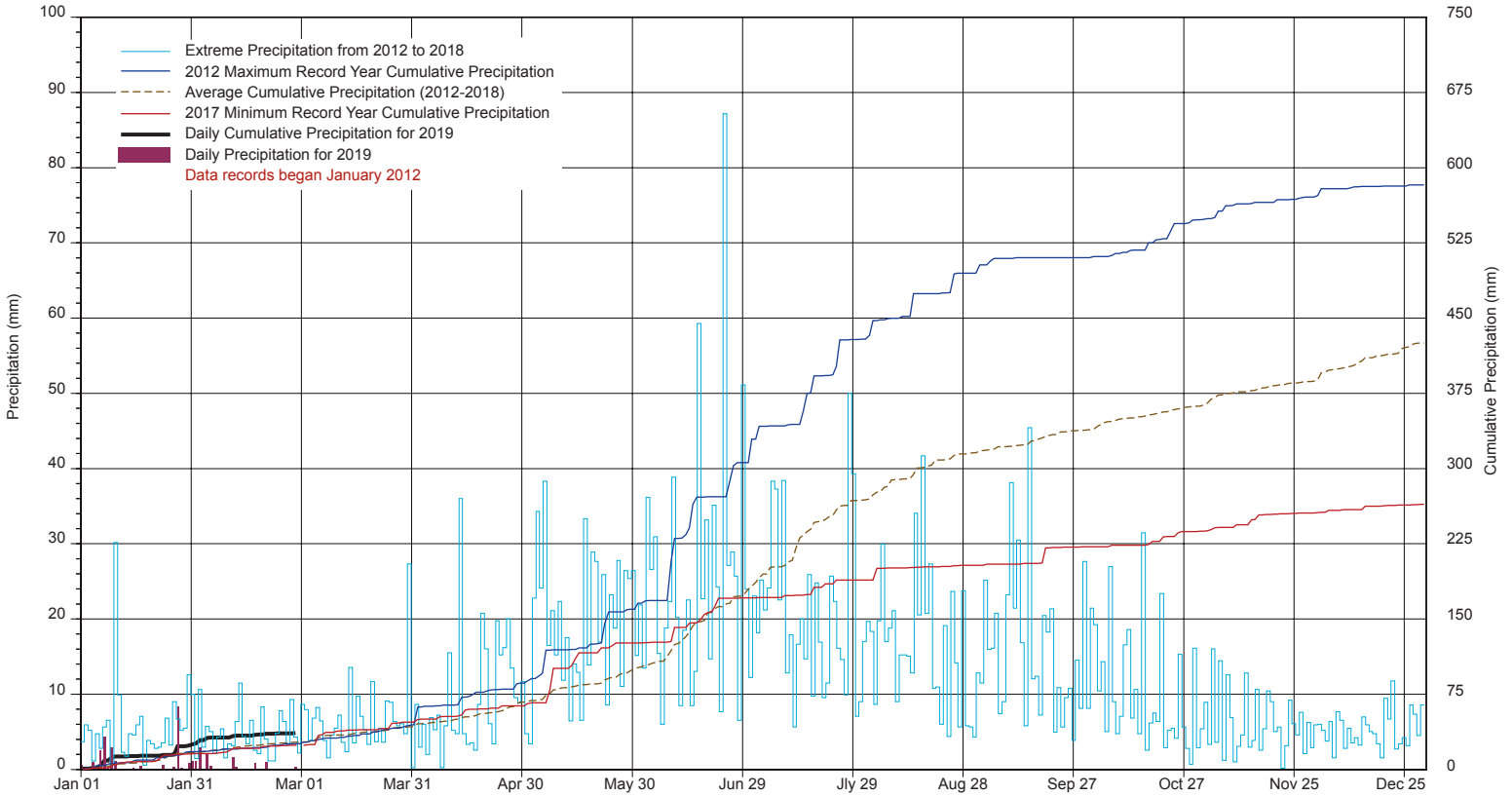


Soil Temperatures for February 2019

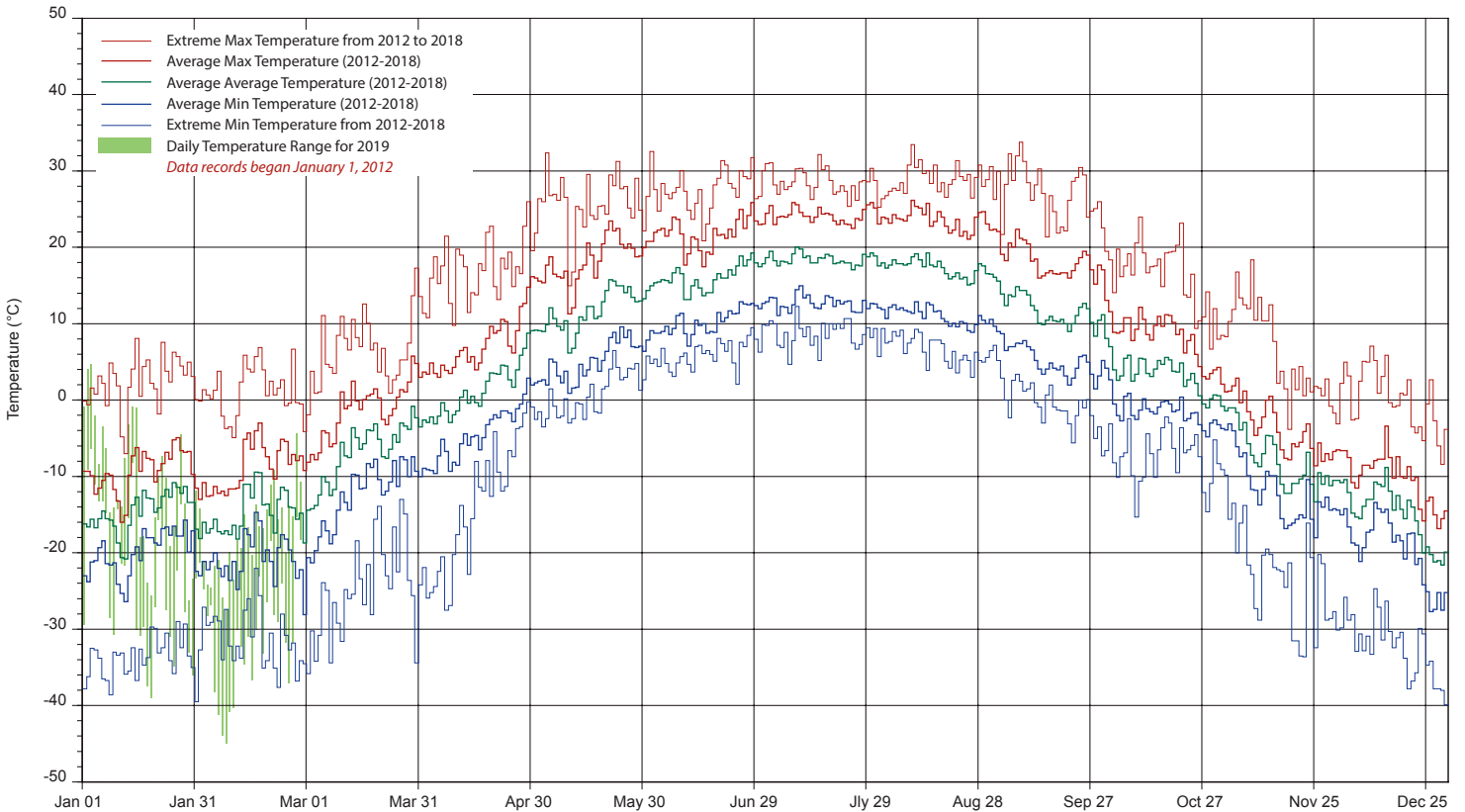
50 - 300cm Level



SRC's CLIMATE REFERENCE STATION at the Conservation Learning Centre 2019 PRECIPITATION AND AVERAGE



2019 TEMPERATURES AND AVERAGES



SRC proudly recognizes the following CRS supporters:

