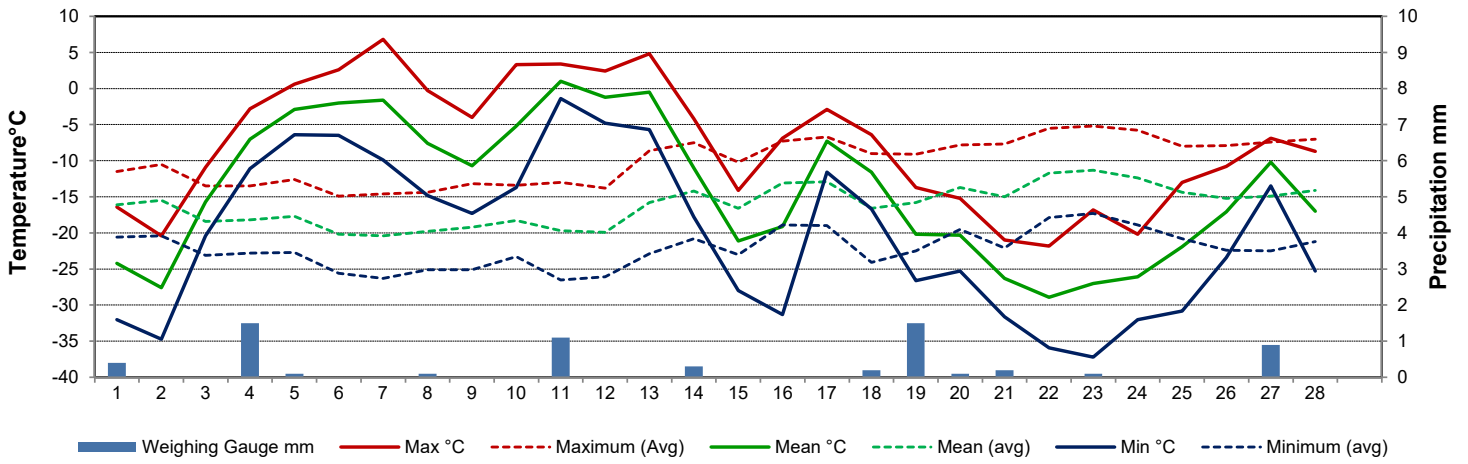
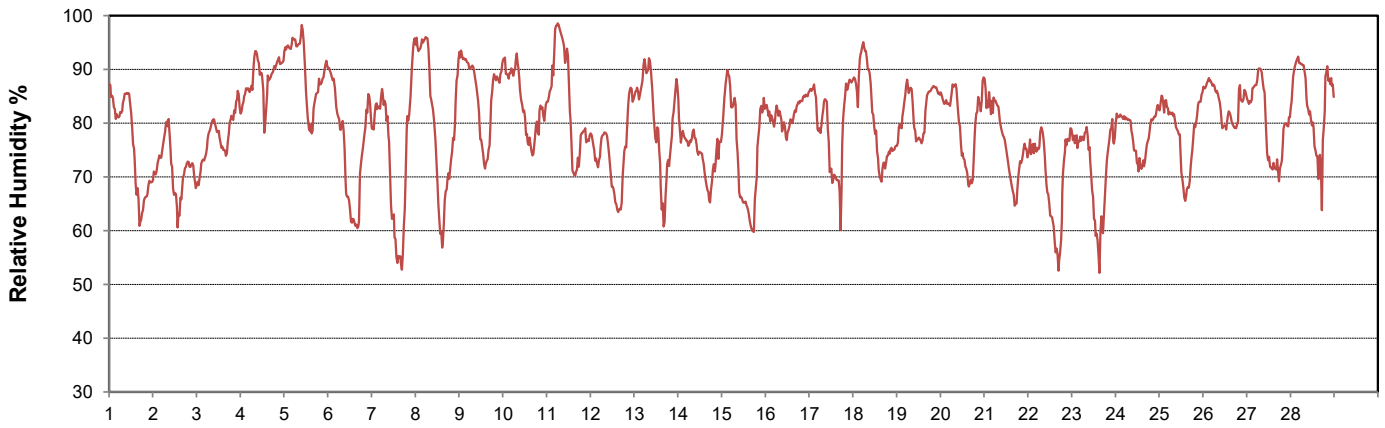


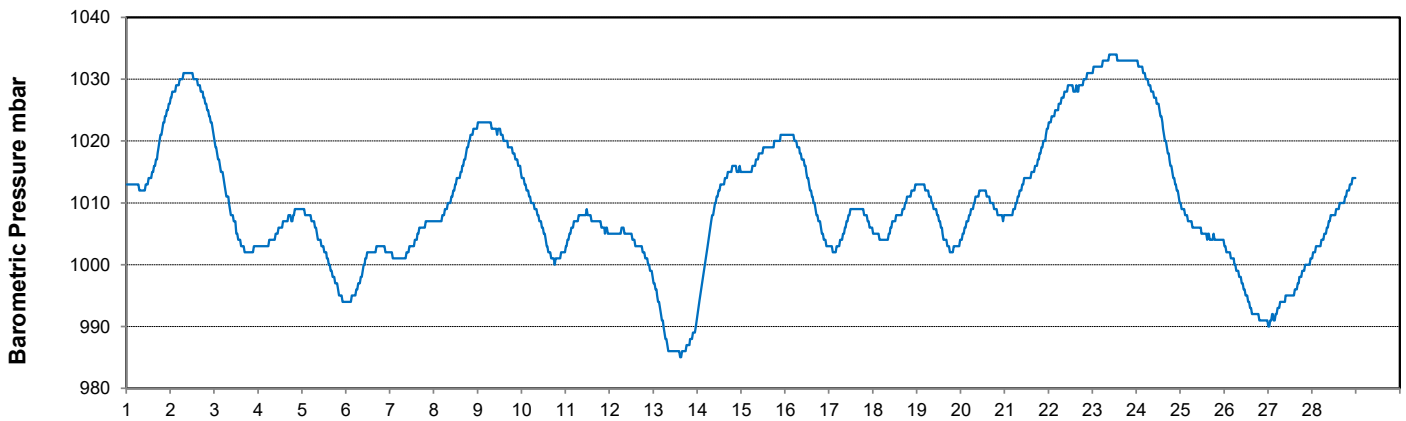
Temperature and Precipitation for February 2023



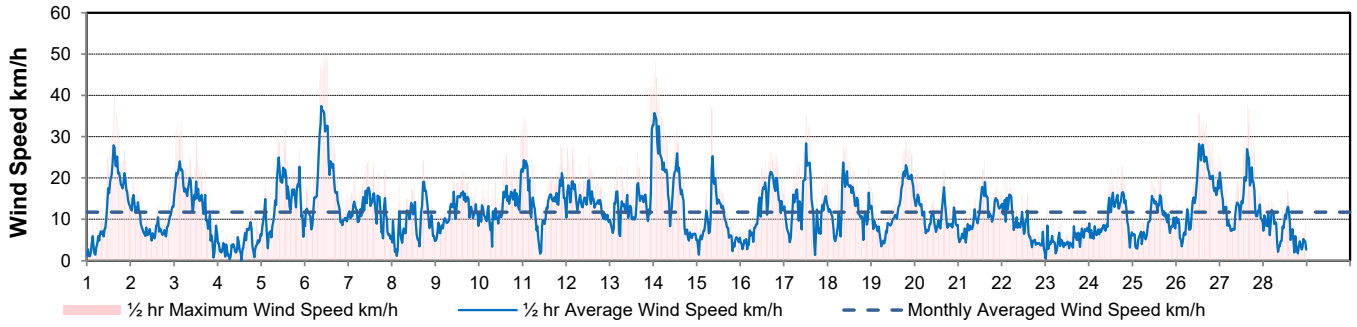
Relative Humidity for February 2023



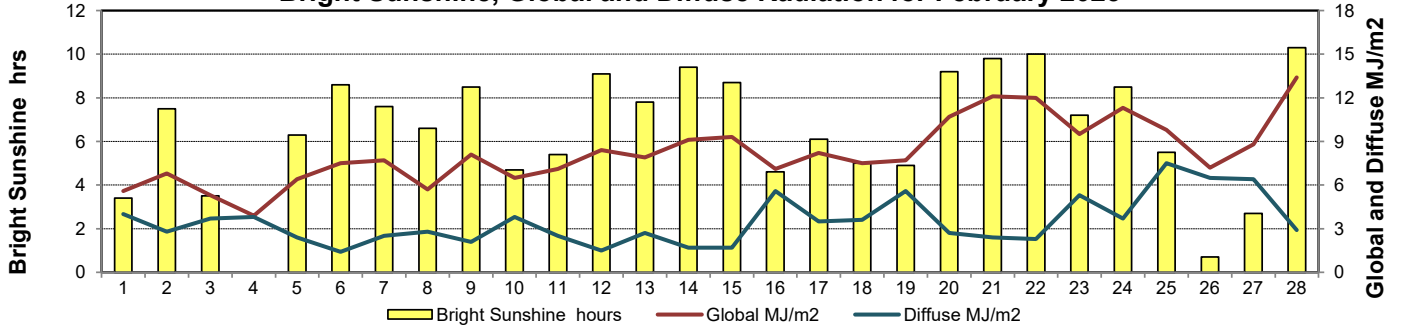
Barometric Pressure Corrected to Sea Level for February 2023



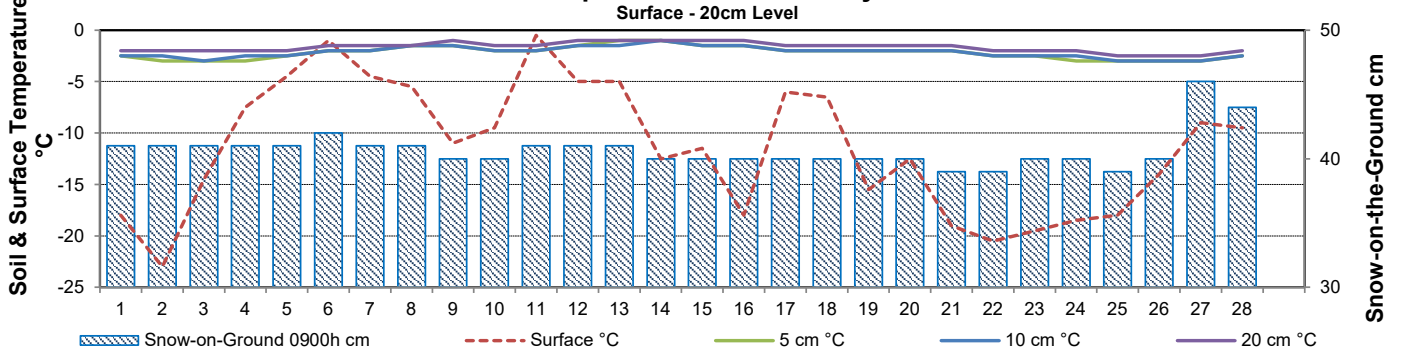
Wind Speed for February 2023



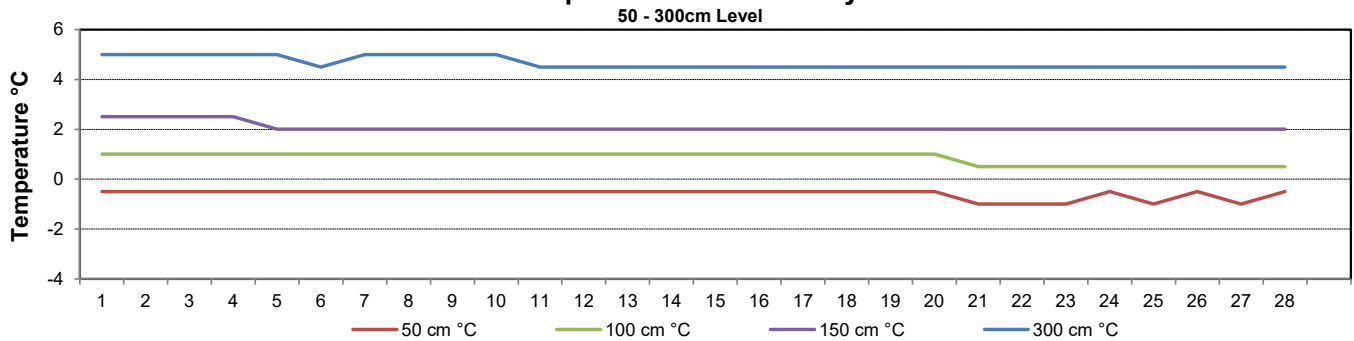
Bright Sunshine, Global and Diffuse Radiation for February 2023



Soil Temperatures for February 2023



Soil Temperatures for February 2023





SRC CLIMATE REFERENCE STATION DAILY DATA REPORT
CONSERVATION LEARNING CENTRE

Saskatchewan 53.03°N 105.77°W 451m asl Estab. 2011

Preliminary

February 2023

Day	2 meter Wind Speed			Soil Moisture at 0900 hrs (rounded to the 0.5%)														
	Daily Average	Max ½ hr Avg	½ hr Extreme Max	10 cm	20 cm	50 cm												
	km/h	km/h	km/h	% by volume (soil type is Clay Loam)														
1	9.0	22.5	31.6	15.0	18.5	31.5												
2	7.0	12.9	17.4	14.5	18.0	30.5												
3	12.0	19.8	29.6	15.0	18.5	31.5												
4	3.0	7.9	10.8	15.5	18.0	31.0												
5	12.0	21.2	26.4	15.5	18.5	31.0												
6	15.0	29.5	40.8	15.5	18.5	31.0												
7	10.0	14.2	21.6	15.5	18.5	31.5												
8	6.0	14.0	19.3	15.5	18.5	31.5												
9	7.0	15.1	19.9	15.5	18.5	31.5												
10	11.0	17.6	25.0	16.0	18.5	31.5												
11	12.0	19.8	27.5	16.0	18.5	31.5												
12	12.0	16.0	23.3	15.5	18.5	31.5												
13	11.0	26.4	34.8	16.0	18.5	31.5												
14	14.0	28.6	38.7	15.5	18.5	31.5												
15	8.0	20.6	30.2	15.5	19.0	31.5												
16	9.0	18.4	23.1	16.0	19.0	31.0												
17	11.0	22.8	28.3	16.0	19.0	31.5												
18	10.0	19.5	24.7	16.0	19.0	31.0												
19	10.0	20.1	27.5	15.5	18.5	31.5												
20	8.0	14.4	18.3	15.5	19.0	31.0												
21	7.0	15.8	20.6	15.5	18.5	31.5												
22	7.0	12.1	16.6	15.0	19.0	31.5												
23	4.0	7.9	11.6	15.5	18.5	31.5												
24	8.0	14.7	19.9	15.0	18.0	31.5												
25	7.0	14.5	19.3	15.0	18.0	31.5												
26	14.0	24.5	30.8	15.0	18.0	31.5												
27	12.0	21.9	29.8	15.0	18.5	31.0												
28	5.0	11.7	15.8	15.0	18.0	31.0												
Total																		
Mean				15	19	31.3												
Extreme	15.0	29.5	40.8	16	19	31.5												
Date	0	0	0	0	0	0												

SRC proudly recognizes the following CRS supporters:

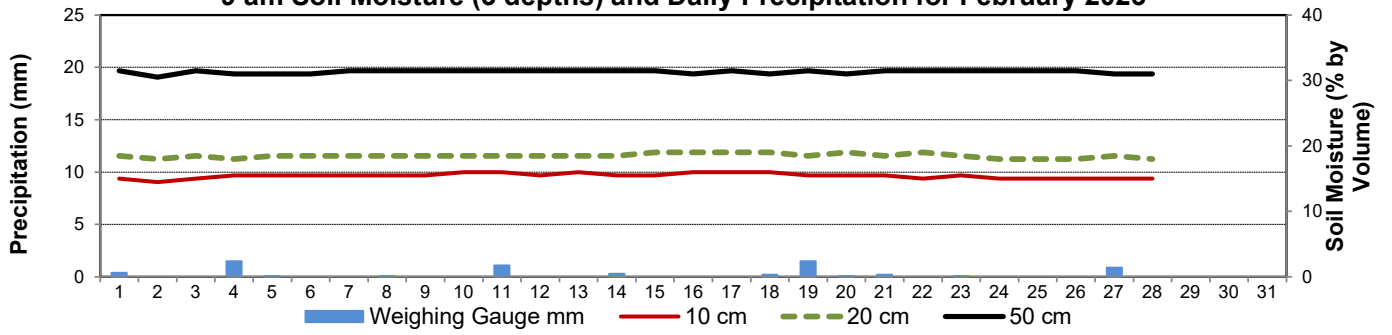


Agriculture and Agri-Food Canada

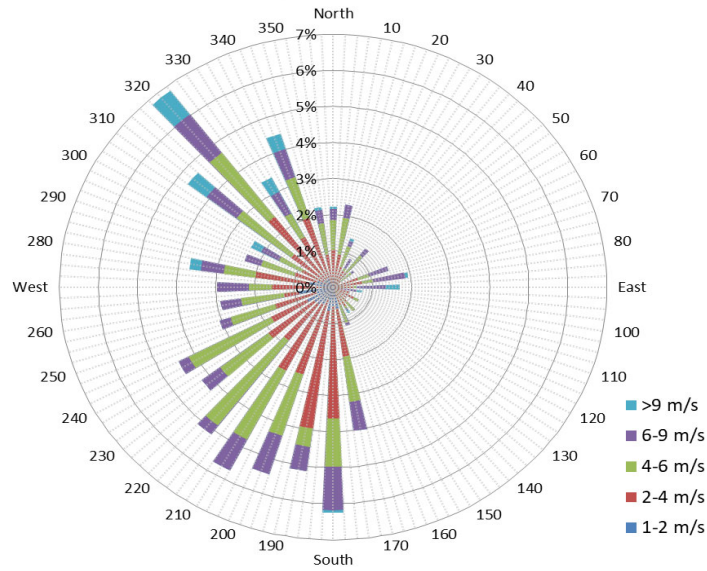
Agriculture et Agroalimentaire Canada



9 am Soil Moisture (3 depths) and Daily Precipitation for February 2023



1/2 hr Maximum Wind Speed and Direction CLC Feb 2023



10 minute Average Wind Speed and Direction CLC Feb 2023

