



SRC CLIMATE REFERENCE STATION DAILY DATA REPORT

CONSERVATION LEARNING CENTRE

Saskatchewan 53.03°N 105.77°W 451m asl Estab. 2011

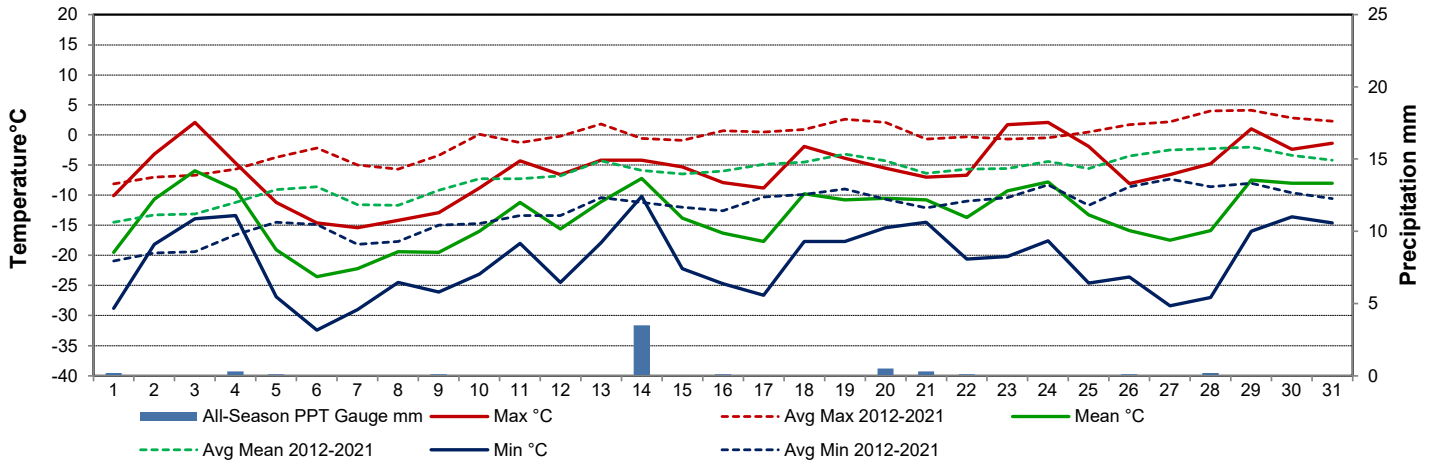
Preliminary **March 2023**

Day	Temperature						Degree-days			Precipitation			Relative Humidity		Station Pressure <i>corrected to sea level</i>	
	Max	Avg Max	Min	Avg Min	Mean	Avg Mean	Growing	Heating	Cooling	All-Season PPT Gauge	Notes:	Snow-on-Ground 0900h	Max ½ hr Avg	Min ½ hr Avg	Max ½ hr Avg	Min ½ hr Avg
	°C	2012-2021	°C	2012-2021	°C	2012-2021	5°C base	18°C base	18°C base	mm		cm	%	%	mbar	mbar
1	-10.1	-8.1	-28.8	-20.9	-19.5	-14.5	0.0	37.5	0.0	0.2		44	89	71	1016	1003
2	-3.2	-7.0	-18.2	-19.6	-10.7	-13.3	0.0	28.7	0.0	0.0		48	94	78	1003	990
3	2.1	-6.7	-13.9	-19.4	-5.9	-13.1	0.0	23.9	0.0	0.0		47	96	59	1001	991
4	-4.7	-5.7	-13.4	-16.6	-9.1	-11.2	0.0	27.1	0.0	0.3		47	93	61	1016	1001
5	-11.2	-3.7	-26.9	-14.5	-19.1	-9.1	0.0	37.1	0.0	0.1		47	88	56	1030	1016
6	-14.6	-2.2	-32.4	-14.9	-23.5	-8.6	0.0	41.5	0.0	0.0		46	84	57	1035	1030
7	-15.4	-5.0	-29.0	-18.2	-22.2	-11.6	0.0	40.2	0.0	0.0		47	85	70	1036	1034
8	-14.2	-5.7	-24.5	-17.7	-19.4	-11.7	0.0	37.4	0.0	0.0		47	85	63	1038	1036
9	-12.9	-3.4	-26.1	-15.0	-19.5	-9.2	0.0	37.5	0.0	0.1		47	86	72	1037	1028
10	-8.8	0.1	-23.1	-14.7	-16.0	-7.3	0.0	34.0	0.0	0.0		47	86	77	1027	1017
11	-4.3	-1.3	-18.0	-13.4	-11.2	-7.3	0.0	29.2	0.0	0.0		44	90	69	1025	1017
12	-6.6	-0.2	-24.5	-13.4	-15.6	-6.8	0.0	33.6	0.0	0.0		43	91	59	1026	1022
13	-4.2	1.8	-17.9	-10.4	-11.1	-4.3	0.0	29.1	0.0	0.0		44	86	70	1022	1003
14	-4.2	-0.6	-10.2	-11.2	-7.2	-5.9	0.0	25.2	0.0	3.5		44	90	77	1004	995
15	-5.3	-0.9	-22.2	-12.0	-13.8	-6.5	0.0	31.8	0.0	0.0		46	93	59	1018	1004
16	-7.9	0.7	-24.7	-12.6	-16.3	-6.0	0.0	34.3	0.0	0.1		46	91	52	1025	1018
17	-8.8	0.5	-26.6	-10.3	-17.7	-4.9	0.0	35.7	0.0	0.0		45	90	51	1028	1025
18	-1.9	0.9	-17.7	-9.9	-9.8	-4.5	0.0	27.8	0.0	0.0		46	93	63	1026	1012
19	-3.9	2.6	-17.7	-9.0	-10.8	-3.2	0.0	28.8	0.0	0.0		46	94	80	1017	1012
20	-5.5	2.1	-15.4	-10.7	-10.5	-4.3	0.0	28.5	0.0	0.5		46	93	75	1017	1014
21	-7.0	-0.7	-14.5	-12.1	-10.8	-6.4	0.0	28.8	0.0	0.3		53	93	77	1014	1012
22	-6.7	-0.3	-20.6	-11.0	-13.7	-5.7	0.0	31.7	0.0	0.1		52	92	73	1014	1009
23	1.7	-0.7	-20.2	-10.4	-9.3	-5.6	0.0	27.3	0.0	0.0		52	95	59	1009	1003
24	2.1	-0.5	-17.6	-8.3	-7.8	-4.4	0.0	25.8	0.0	0.0		51	95	36	1014	1005
25	-1.9	0.5	-24.6	-11.7	-13.3	-5.6	0.0	31.3	0.0	0.0		51	90	58	1015	1013
26	-8.1	1.7	-23.6	-8.6	-15.9	-3.5	0.0	33.9	0.0	0.1		51	95	59	1027	1014
27	-6.6	2.2	-28.4	-7.3	-17.5	-2.5	0.0	35.5	0.0	0.0		51	88	40	1028	1024
28	-4.8	4.0	-27.0	-8.6	-15.9	-2.3	0.0	33.9	0.0	0.2		50	88	37	1024	1019
29	1.0	4.1	-16.0	-8.0	-7.5	-2.0	0.0	25.5	0.0	0.0		51	92	61	1019	1009
30	-2.4	2.8	-13.6	-9.6	-8.0	-3.4	0.0	26.0	0.0	0.0		51	93	67	1013	1011
31	-1.4	2.3	-14.6	-10.6	-8.0	-4.2	0.0	26.0	0.0	0.0		51	96	74	1012	1006
Total							0.0	974.6	0.0	5.5						
Avg	-5.8	-1.2	-21.0	-13.0	-13.4	-7.1	Monthly 2012 - 2021 Average			14.1	2012-2021 Average					
Extreme	2.1	17.3	-32.4	-35.8			1.1	740.4	0.0	21.1	2023 Cumulative ppt		96	36	1038	990
Date	3	2012	6	2014						41.8	Cumulative Average		3	24	8	2

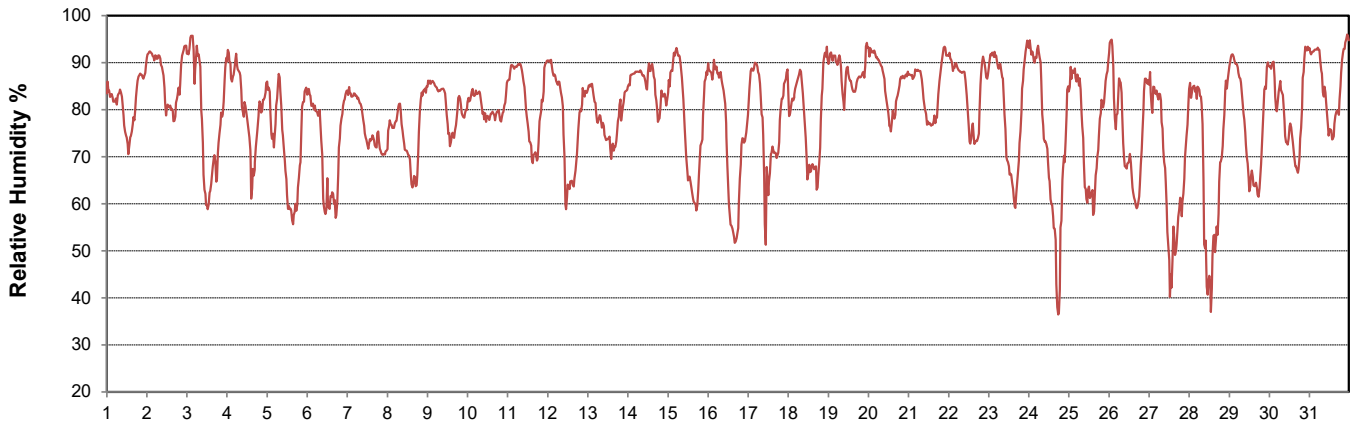
SRC proudly recognizes the following CRS supporters:



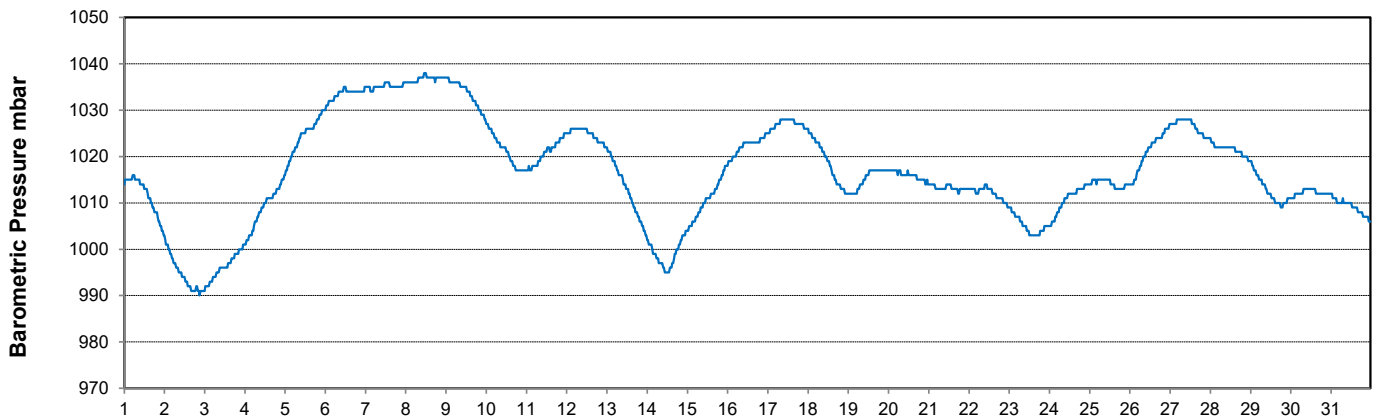
Temperature and Precipitation for March 2023



Relative Humidity for March 2023



Barometric Pressure Corrected to Sea Level for March 2023





SRC CLIMATE REFERENCE STATION DAILY DATA REPORT

CONSERVATION LEARNING CENTRE

Saskatchewan 53.03°N 105.77°W 451m asl Estab. 2011

Preliminary

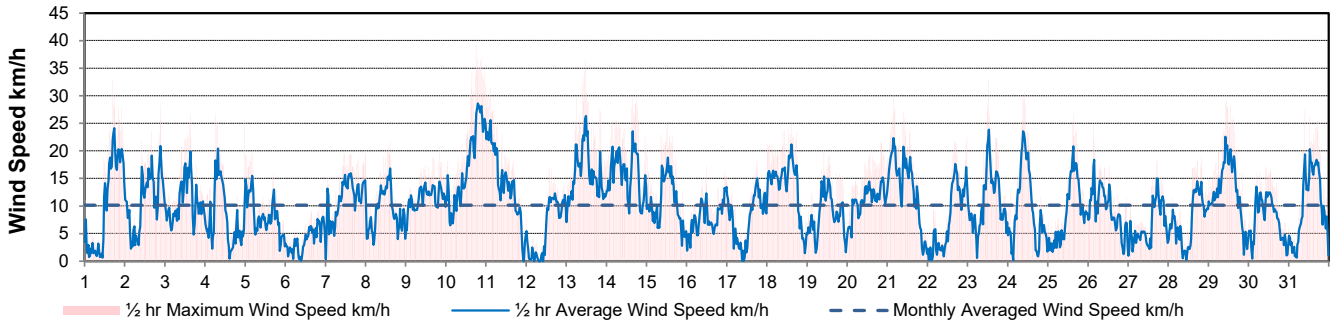
March 2023

Day	Wind Gust			Wind Speed (10 meters) Daily Average	Soil Temperatures at 0900hrs								Radiation				
	Max	Direction	Time		Surface	5 cm	10 cm	20 cm	50 cm	100 cm	150 cm	300 cm	Bright Sunshine	Bright Sunshine Possible	% Possible	Global	Diffuse
	km/h				°C	°C	°C	°C	°C	°C	°C	°C	hours	hours		MJ/m ²	MJ/m ²
1	32.7	S	16:55	10.0	-12.5	-2.5	-2.5	-2.0	-0.5	0.5	2.0	4.5	4.8	10.9	44.2	10.3	7.2
2	28.2	SSW	21:11	10.9	-9.5	-2.5	-2.5	-2.0	-0.5	0.5	2.0	4.5	4.3	10.9	39.4	9.7	7.2
3	26.6	NW	15:07	10.9	-8.0	-2.5	-2.5	-2.0	-0.5	0.5	1.5	4.5	8.6	11.0	78.3	12.9	3.4
4	26.7	NNE	6:07	8.1	-6.5	-2.5	-2.5	-2.0	-0.5	0.5	1.5	4.5	0.0	11.1	0.0	8.2	7.8
5	19.8	N	4:10	8.4	-9.5	-2.0	-2.0	-2.0	-0.5	0.5	1.5	4.5	10.7	11.1	96.1	14.0	2.7
6	10.4	ENE	22:41	3.9	-14.0	-2.0	-2.0	-1.5	-0.5	0.5	1.5	4.5	10.8	11.2	96.4	14.2	3.3
7	20.0	E	23:53	11.5	-13.5	-2.5	-2.0	-2.0	-0.5	0.5	1.5	4.0	8.5	11.3	75.4	11.6	8.0
8	21.8	E	14:53	8.8	-12.0	-2.5	-2.5	-2.0	-1.0	0.5	1.5	4.0	10.6	11.3	93.5	14.3	3.1
9	20.8	ESE	20:09	11.3	-13.0	-2.5	-2.5	-2.0	-1.0	0.5	1.5	4.0	7.1	11.4	62.2	13.5	5.6
10	39.1	ENE	18:06	17.3	-11.0	-2.5	-2.5	-2.0	-0.5	0.5	1.5	4.0	9.1	11.5	79.3	12.9	5.1
11	31.5	ENE	2:31	14.0	-9.0	-2.5	-2.5	-2.0	-0.5	0.5	1.5	4.0	8.5	11.6	73.6	13.5	6.9
12	16.9	S	13:56	5.9	-14.0	-2.5	-2.5	-2.0	-1.0	0.5	1.5	4.0	10.8	11.6	92.9	16.2	2.8
13	36.5	S	11:52	15.9	-10.5	-2.5	-2.5	-2.0	-0.5	0.5	1.5	4.0	6.2	11.7	53.0	11.7	8.3
14	29.7	NW	18:00	15.8	-6.5	-2.5	-2.5	-2.0	-1.0	0.5	1.5	4.0	2.7	11.8	23.0	9.2	7.9
15	24.9	NW	12:34	10.5	-7.5	-2.0	-2.0	-2.0	-0.5	0.5	1.5	4.0	11.3	11.8	95.5	16.3	3.5
16	17.2	NNW	11:35	8.0	-9.5	-2.0	-2.0	-1.5	-1.0	0.5	1.5	4.0	11.3	11.9	95.0	16.8	6.1
17	18.4	S	18:04	7.4	-10.5	-2.0	-2.0	-1.5	-0.5	0.5	1.5	4.0	11.4	12.0	95.2	17.8	3.2
18	25.2	S	14:43	13.6	-11.0	-2.0	-2.0	-1.5	-1.0	0.5	1.5	4.0	11.6	12.0	96.3	17.0	3.5
19	19.9	ENE	10:29	8.5	-9.0	-2.0	-2.0	-2.0	-1.0	0.5	1.5	4.0	2.5	12.1	20.6	10.8	9.0
20	21.8	SSE	20:13	11.1	-6.5	-2.0	-2.0	-2.0	-1.5	0.5	1.5	4.0	2.2	12.2	18.1	12.1	9.9
21	30.2	S	4:00	13.1	-6.5	-2.0	-2.0	-1.5	-1.5	0.5	1.5	4.0	9.3	12.3	75.9	15.9	10.8
22	22.4	SSW	23:30	7.6	-8.5	-2.0	-2.0	-1.5	-1.5	0.5	1.5	4.0	9.1	12.3	73.9	16.2	5.2
23	32.9	SSW	12:44	10.9	-9.5	-2.0	-2.0	-1.5	-1.5	0.5	1.5	4.0	11.8	12.4	95.2	18.4	3.6
24	30.7	NNE	10:12	9.4	-7.5	-2.0	-2.0	-1.5	-1.5	0.5	1.5	4.0	10.4	12.5	83.5	17.9	4.3
25	26.8	SSW	15:07	8.7	-11.0	-2.0	-2.0	-1.5	-0.5	0.5	1.5	4.0	10.0	12.5	79.8	17.6	5.3
26	24.4	N	3:25	9.3	-10.0	-2.0	-2.0	-1.5	-2.0	0.5	1.5	4.0	12.2	12.6	96.8	20.1	3.4
27	18.2	S	17:32	6.6	-13.5	-2.0	-2.0	-1.5	-1.0	0.5	1.5	4.0	12.2	12.7	96.3	20.0	3.4
28	18.9	SW	19:48	7.3	-13.0	-2.0	-2.0	-1.5	-1.0	0.5	1.5	4.0	11.2	12.7	87.9	19.7	3.5
29	29.1	SSW	10:40	12.6	-11.5	-2.0	-2.0	-1.5	-1.0	0.5	1.5	4.0	9.5	12.8	74.2	16.7	10.7
30	17.1	E	10:21	7.7	-5.5	-2.0	-2.0	-1.5	-1.5	0.5	1.5	4.0	10.0	12.9	77.6	18.7	6.3
31	27.4	S	9:36	10.0	-6.0	-2.0	-2.0	-1.5	-1.5	0.5	1.5	4.0	10.9	13.0	84.2	19.9	5.7
Total													269.6	368.9	73.1	464.1	176.7
Mean					-9.9	-2.2	-2.2	-1.8	-0.9	0.5	1.5	4.1					
Extreme	39.1	ENE	18:06														
Date	10																

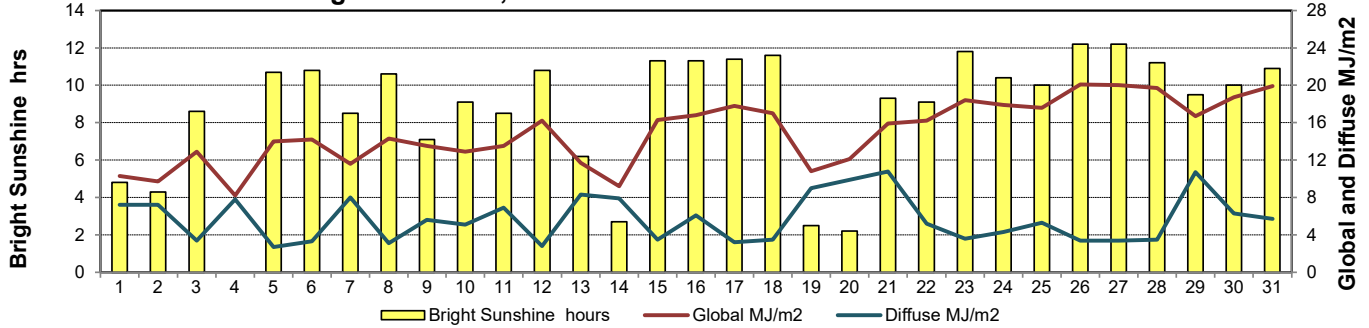
GLOSSARY OF TERMS

Degree-days	Radiation
T _m Mean Temperature	Bright Sunshine is the unobstructed direct radiation from the sun, as opposed to the shading of a location by clouds or by other atmospheric obstructions.
Growing (T _m -5°C); if T _m ≤ 5°C then GDD = 0	
Heating (18°C-T _m); if T _m ≥ 18°C then HDD = 0	
Cooling (T _m -18°C); if T _m ≤ 18°C then CDD = 0	Diffuse is radiation reaching the earth's surface after having been scattered from the direct solar beam
T Trace of Precipitation	Global is the sum of the direct solar and diffuse radiation
SOG Depth of snow-on-the-ground	Relative Humidity The ratio of the air's water vapour content to its water vapour capacity which changes with temperature.
Red Cell no data available	Air Pressure The force exerted by the weight of a column of air above a given point
Red Number manual calculation	Wind Gust The daily highest instantaneous value recorded irrespective of direction and/or duration

Wind Speed for March 2023

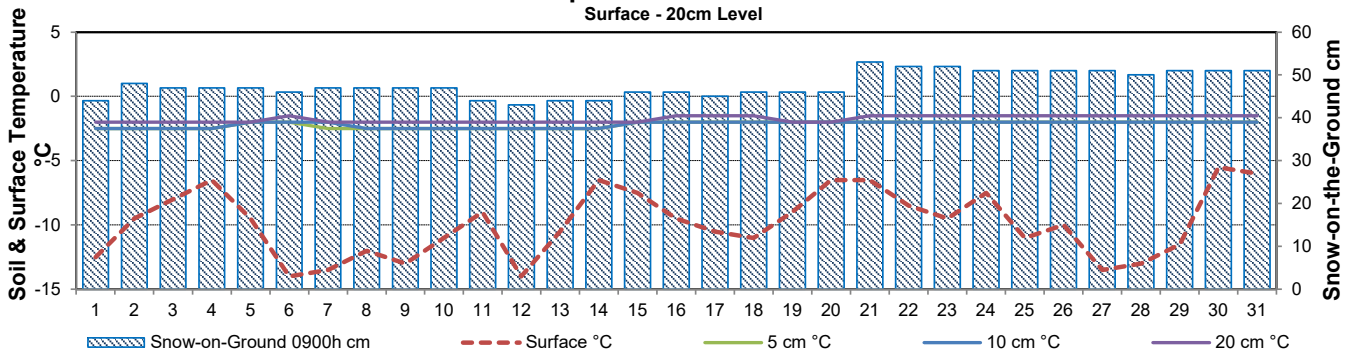


Bright Sunshine, Global and Diffuse Radiation for March 2023



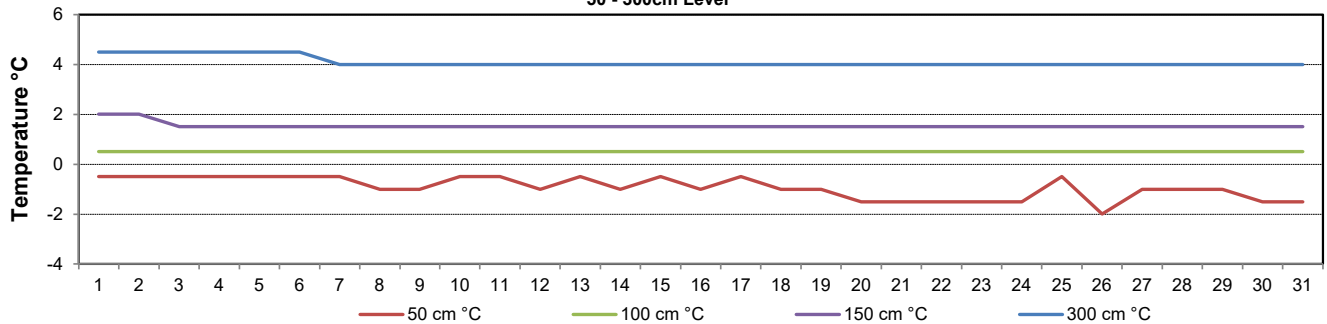
Soil Temperatures for March 2023

Surface - 20cm Level



Soil Temperatures for March 2023

50 - 300cm Level





SRC CLIMATE REFERENCE STATION DAILY DATA REPORT

CONSERVATION LEARNING CENTRE

Saskatchewan 53.03°N 105.77°W 451m asl Estab. 2011

Preliminary

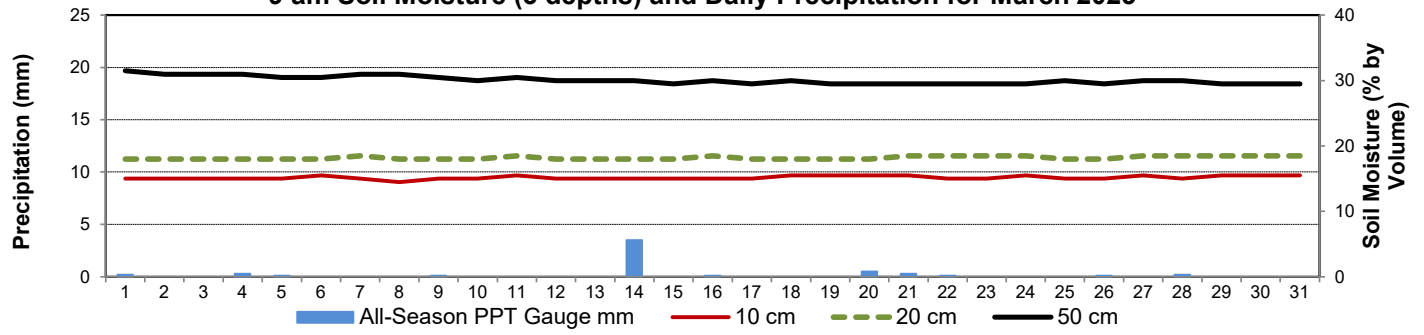
March 2023

Day	2 meter Wind Speed			Soil Moisture at 0900 hrs (rounded to the 0.5%)														
	Daily Average	Max ½ hr Avg	½ hr Extreme Max	10 cm	20 cm	50 cm												
	km/h	km/h	km/h	% by volume (soil type is Clay Loam)			Temperature											
1	8.0	20.7	27.2	15.0	18.0	31.5	March 2023 had the lowest minimum and average temperatures for SRC CRS CLC period of record (2012-2023)											
2	9.0	18.2	23.9	15.0	18.0	31.0												
3	9.0	16.4	21.8	15.0	18.0	31.0	Record number of days (31) with Minimum Daily temperatures was <= -10° C											
4	7.0	16.5	21.0	15.0	18.0	31.0	Record number of days (17) with Minimum Daily temperatures was <= -20° C											
5	7.0	12.4	16.8	15.0	18.0	30.5	Precipitation											
6	3.0	7.1	9.3	15.5	18.0	30.5												
7	9.0	15.0	18.7	15.0	18.5	31.0	March 2023 was the 2nd driest March in the last 12 years (2019 = 2.5mm)											
8	7.0	14.8	19.3	14.5	18.0	31.0												
9	9.0	13.5	17.2	15.0	18.0	30.5												
10	15.0	24.9	32.7	15.0	18.0	30.0												
11	11.0	22.5	27.3	15.5	18.5	30.5												
12	5.0	10.8	15.4	15.0	18.0	30.0												
13	11.0	22.3	31.2	15.0	18.0	30.0												
14	14.0	19.7	26.8	15.0	18.0	30.0												
15	8.0	15.8	20.6	15.0	18.0	29.5												
16	6.0	11.0	13.7	15.0	18.5	30.0												
17	6.0	12.1	14.9	15.0	18.0	29.5												
18	12.0	18.5	21.6	15.5	18.0	30.0												
19	7.0	13.9	19.1	15.5	18.0	29.5												
20	8.0	11.1	17.6	15.5	18.0	29.5												
21	11.0	19.2	26.4	15.5	18.5	29.5												
22	6.0	15.5	20.6	15.0	18.5	29.5												
23	9.0	20.7	27.3	15.0	18.5	29.5												
24	7.0	19.2	24.5	15.5	18.5	29.5												
25	8.0	18.7	24.7	15.0	18.0	30.0												
26	7.0	14.6	19.9	15.0	18.0	29.5												
27	5.0	13.1	16.0	15.5	18.5	30.0												
28	6.0	13.1	17.0	15.0	18.5	30.0												
29	11.0	20.0	25.6	15.5	18.5	29.5												
30	6.0	12.0	16.4	15.5	18.5	29.5												
31	8.0	3.0	24.0	15.5	18.5	29.5												
Total																		
Mean				15	18	30.1												
Extreme	15.0	24.9	32.7	15.5	18.5	31.5												

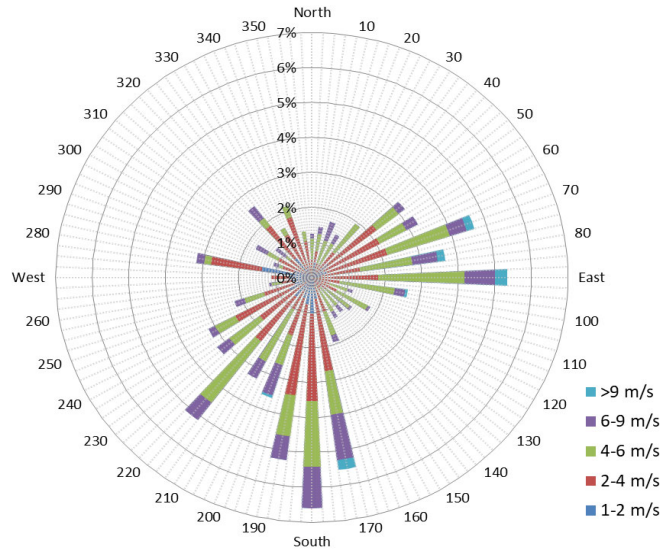
SRC proudly recognizes the following CRS supporters:



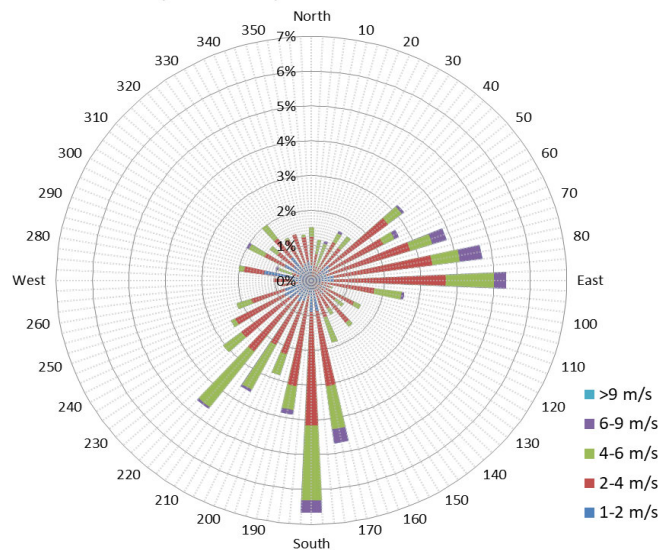
9 am Soil Moisture (3 depths) and Daily Precipitation for March 2023



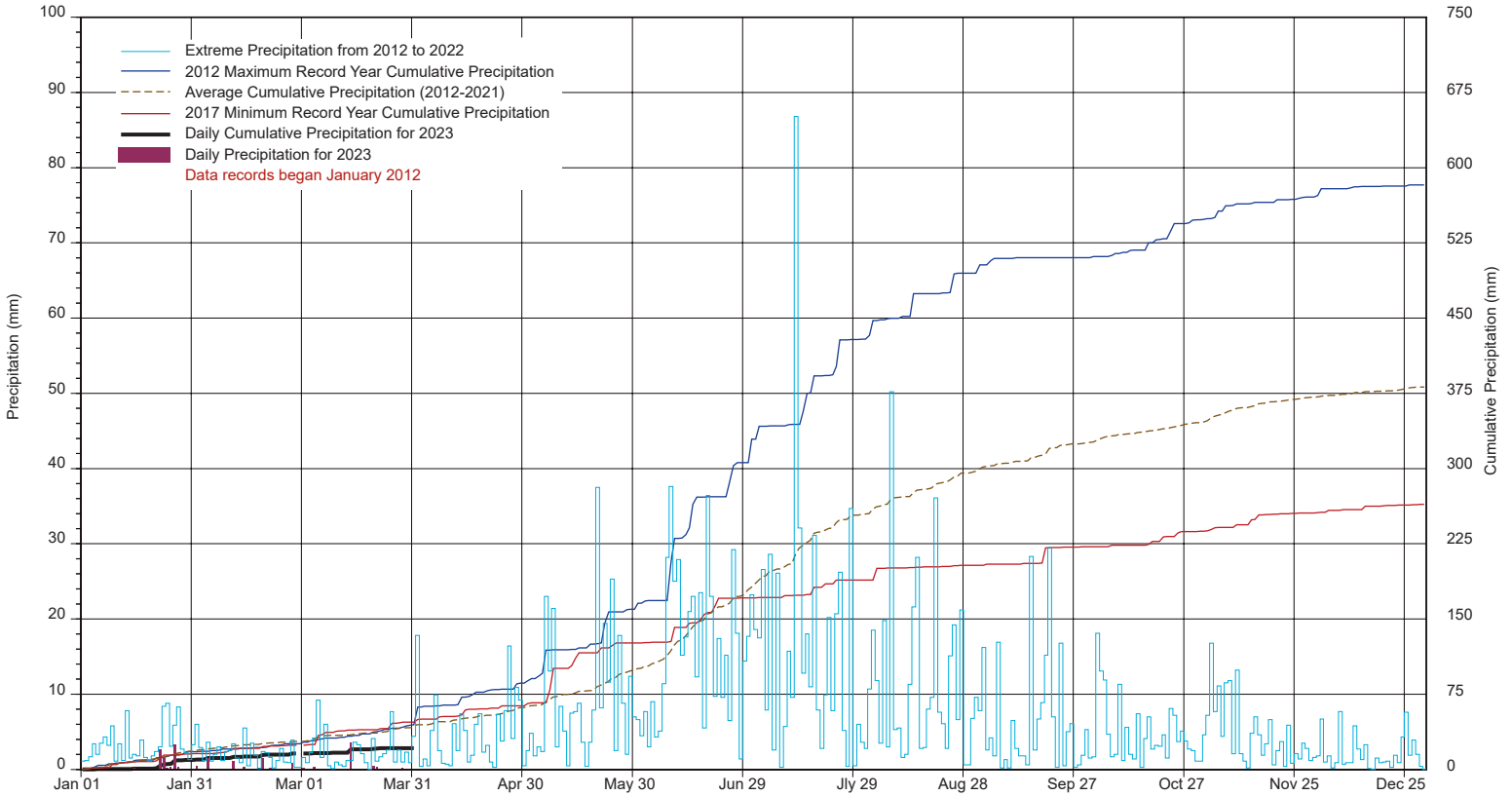
1/2 hr Maximum Wind Speed and Direction CLC Mar 2023



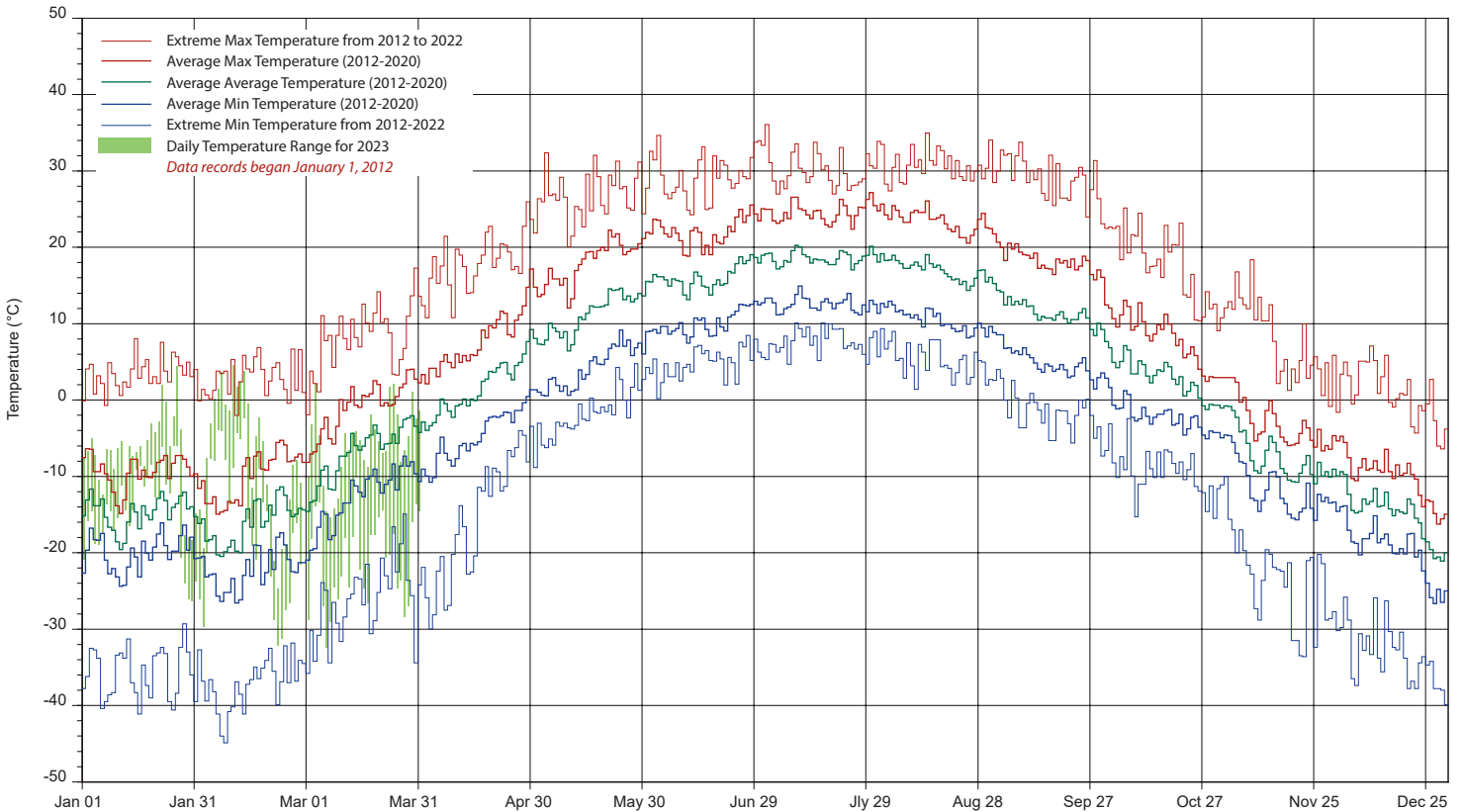
10 minute Average Wind Speed and Direction CLC Mar 2023



SRC's CLIMATE REFERENCE STATION at the Conservation Learning Centre 2023 PRECIPITATION AND AVERAGE



2023 TEMPERATURES AND AVERAGES



SRC proudly recognizes the following CRS supporters:

