



# SRC CLIMATE REFERENCE STATION DAILY DATA REPORT

## CONSERVATION LEARNING CENTRE

Saskatchewan 53.03°N 105.77°W Estab. 2011

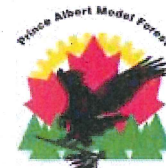
Preliminary **January 2014**

Day	Temperature			Degree-days			Precipitation			Relative Humidity		Station Pressure <i>corrected to sea level</i>	
	Max	Min	Mean	Growing	Heating	Cooling	Weighing Gauge	Notes:	Snow-on-Ground 0900h	Max ½ hr Avg	Min ½ hr Avg	Max ½ hr Avg	Min ½ hr Avg
	°C	°C	°C	5°C base	18°C base	18°C base	mm		cm	%	%	mbar	mbar
1	-22.5	-37.8	-30.2	0.0	48.2	0.0	0.0		39	74	54	1028	1024
2	-10.0	-36.2	-23.1	0.0	41.1	0.0	0.0		40	87	69	1025	998
3	-9.0	-23.9	-16.5	0.0	34.5	0.0	0.2		38	92	64	1016	995
4	-23.2	-30.7	-27.0	0.0	45.0	0.0	0.0		40	72	51	1028	1016
5	-29.2	-33.8	-31.5	0.0	49.5	0.0	0.0		39	69	54	1035	1028
6	-24.8	-36.5	-30.7	0.0	48.7	0.0	0.0		40	77	68	1030	1016
7	-20.3	-36.7	-28.5	0.0	46.5	0.0	0.5		39	77	57	1023	1016
8	-12.1	-38.6	-25.4	0.0	43.4	0.0	0.2		39	84	67	1022	1000
9	-7.7	-14.9	-11.3	0.0	29.3	0.0	0.3		39	93	86	1000	995
10	-5.0	-11.8	-8.4	0.0	26.4	0.0	0.0		39	92	79	999	994
11	-4.8	-9.0	-6.9	0.0	24.9	0.0	3.4		39	91	82	1000	977
12	-7.0	-14.4	-10.7	0.0	28.7	0.0	0.0		47	88	73	1001	980
13	-6.5	-19.9	-13.2	0.0	31.2	0.0	0.0		47	87	73	1012	994
14	-7.5	-20.5	-14.0	0.0	32.0	0.0	0.0		45	84	60	1023	1005
15	8.1	-7.5	0.3	0.0	17.7	0.0	0.0		45	84	50	1005	990
16	0.5	-18.0	-8.8	0.0	26.8	0.0	0.0		44	90	59	1021	1006
17	4.0	-4.1	0.0	0.0	18.0	0.0	0.0		44	87	65	1013	1001
18	2.0	-7.5	-2.8	0.0	20.8	0.0	0.0		44	91	69	1013	998
19	-5.9	-21.0	-13.5	0.0	31.5	0.0	0.9		44	93	77	1017	996
20	-16.9	-29.0	-23.0	0.0	41.0	0.0	0.0		44	77	64	1030	1017
21	-7.4	-21.5	-14.5	0.0	32.5	0.0	0.0		44	84	70	1028	1013
22	-19.7	-32.4	-26.1	0.0	44.1	0.0	0.0		44	78	59	1035	1028
23	-1.0	-27.1	-14.1	0.0	32.1	0.0	0.0		44	84	76	1030	1008
24	2.4	-13.4	-5.5	0.0	23.5	0.0	0.0		44	84	72	1017	1004
25	-0.6	-13.8	-7.2	0.0	25.2	0.0	3.1		43	91	72	1017	997
26	-10.0	-27.9	-19.0	0.0	37.0	0.0	0.3		43	71	55	1030	1005
27	-23.5	-32.4	-28.0	0.0	46.0	0.0	0.0		43	70	50	1030	1026
28	-13.0	-29.3	-21.2	0.0	39.2	0.0	0.0		43	76	59	1025	999
29	-11.2	-22.1	-16.7	0.0	34.7	0.0	0.0		43	77	66	1009	999
30	-21.9	-25.5	-23.7	0.0	41.7	0.0	0.0		43	77	63	1014	1006
31	-15.8	-22.4	-19.1	0.0	37.1	0.0	0.0		43	78	68	1013	1001
<b>Total</b>				0.0	1078.3	0.0	8.9						
<b>Avg</b>	<b>-10.3</b>	<b>-23.2</b>	<b>-16.8</b>				8.9	<b>Cumulative ppt 2014</b>					
<b>Extreme</b>	8.1	-38.6					3.4		47	93	50	1035	977
<b>Date</b>	15	8					11		12	9	15	5	11
<b>Site Extreme</b>	4.9	-39.5					26.0						
<b>Date</b>	08/2012	31/2013					2013						

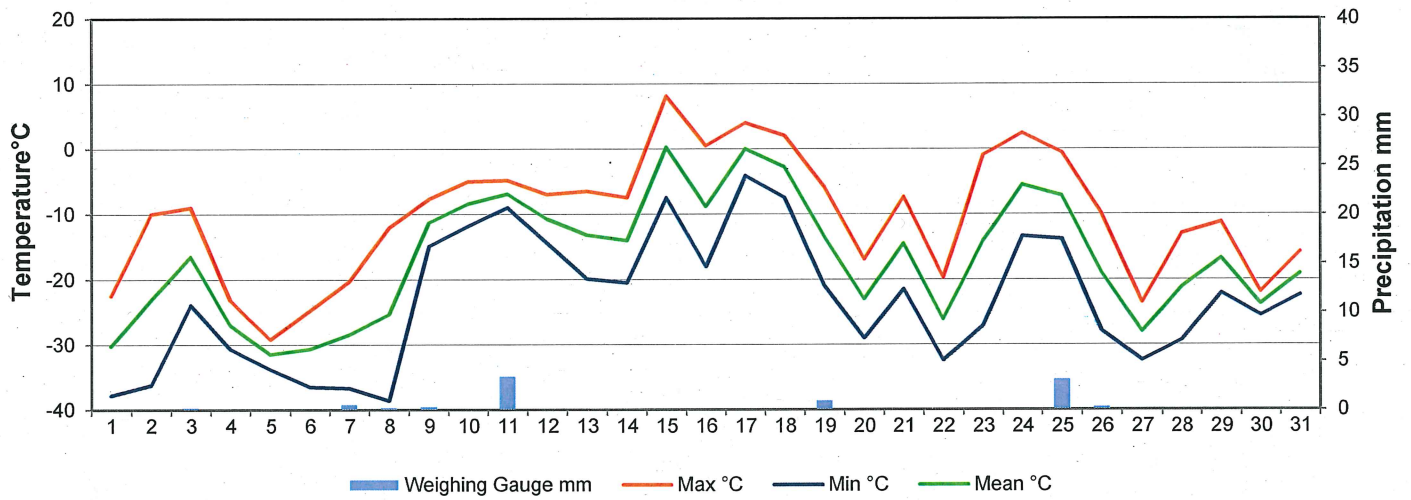


Agriculture and Agri-Food Canada

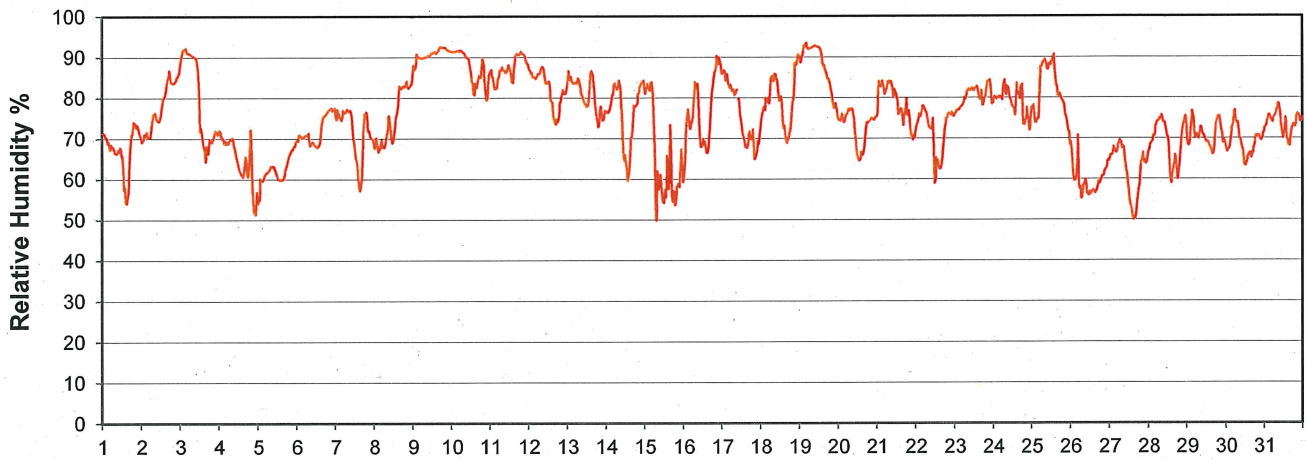
Agriculture et Agroalimentaire Canada



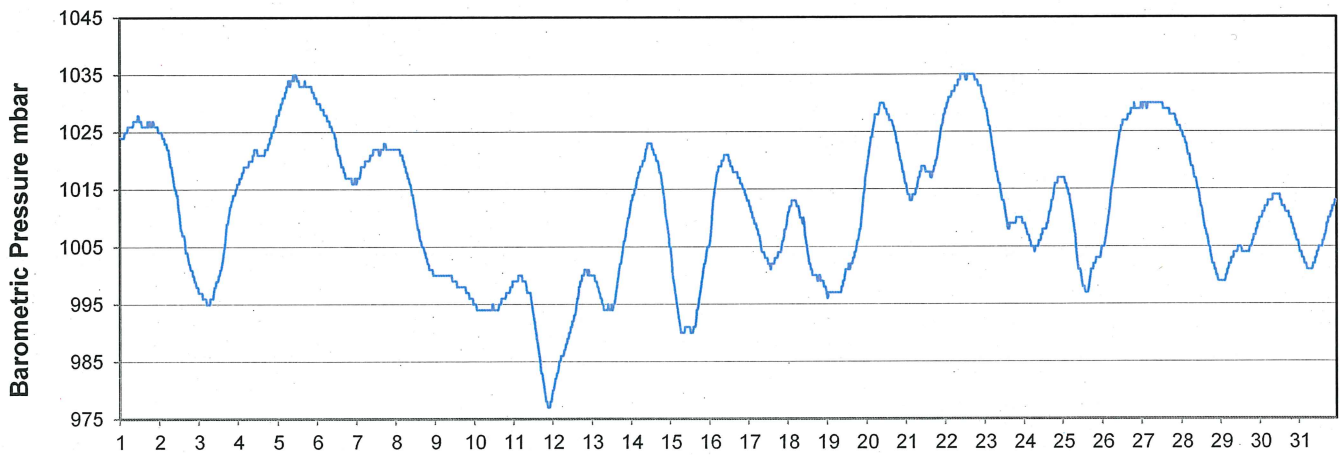
### Temperature and Precipitation for January 2014



### Relative Humidity for January 2014



### Barometric Pressure Corrected to Sea Level for January 2014







# SRC CLIMATE REFERENCE STATION DAILY DATA REPORT

## CONSERVATION LEARNING CENTRE

Saskatchewan 53.03°N 105.77°W Estab. 2011

Preliminary **January 2014**

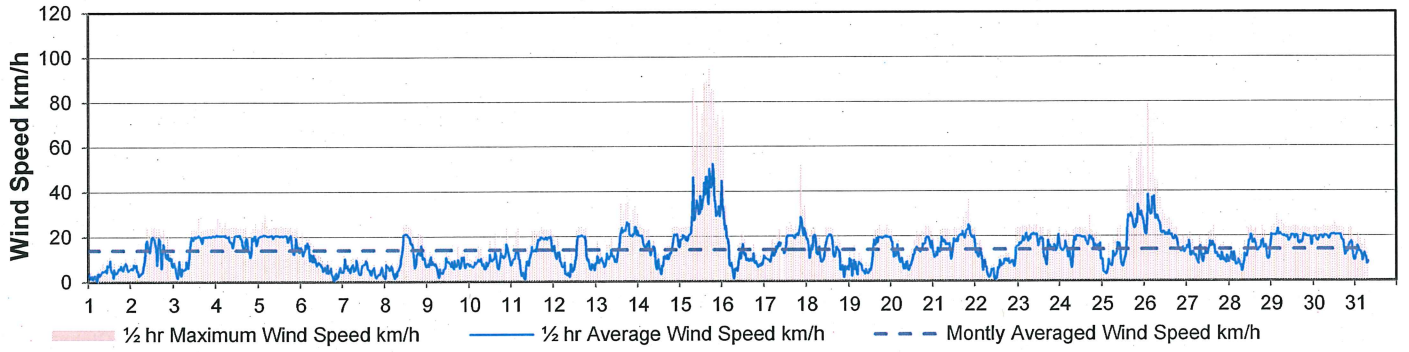
Day	Wind Gust			Soil Temperatures at 0900hrs								Soil Moisture	Radiation			
	Max	Direction	Time	Surface	5 cm	10 cm	20 cm	50 cm	100 cm	150 cm	300 cm	0900hrs	Bright Sunshine	Global	Diffuse	
	km/h			°C	°C	°C	°C	°C	°C	°C	°C	%	hours	MJ/m <sup>2</sup>	MJ/m <sup>2</sup>	
1	11.6	SW	12:38	-14.0	-1.5	-1.5	-0.5	1.0	3.0	4.0	6.5	14		5.6	1.1	
2	24.4	S	12:47	-16.0	-2.0	-1.5	-0.5	1.0	3.0	4.0	6.5	14		1.8	1.7	
3	28.9	NW	14:30	-6.5	-2.0	-2.0	-1.0	1.0	2.5	4.0	6.5	14		3.0	1.4	
4	28.2	NW	1:09	-16.5	-1.5	-1.5	-1.0	1.0	2.5	4.0	6.5	14		3.5	1.4	
5	29.7	NNW	4:14	-21.0	-1.5	-1.5	-1.0	1.0	2.5	4.0	6.5	14		3.4	1.6	
6	21.6	WNNW	1:11	-18.0	-2.0	-1.5	-1.0	1.0	2.5	4.0	6.5	14		2.3	2.2	
7	14.3	NW	8:22	-12.5	-2.0	-2.0	-1.0	0.5	2.5	4.0	6.5	14		1.7	0.7	
8	26.0	S	12:32	-14.0	-2.0	-2.0	-1.0	0.5	2.5	4.0	6.5	13		2.5	2.4	
9	15.8	SSW	18:02	-8.0	-2.5	-2.0	-1.5	0.5	2.5	4.0	6.0	13		2.2	2.1	
10	23.5	SSW	15:34	-6.0	-2.0	-2.0	-1.5	0.5	2.0	3.5	6.0	14		3.3	2.0	
11	24.8	E	17:28	-5.0	-2.0	-2.0	-1.5	0.5	2.0	3.5	6.0	14		2.2	2.1	
12	25.5	NW	16:41	-4.0	-2.0	-2.0	-1.5	0.0	2.0	3.5	5.5	14		2.4	2.3	
13	44.1	NW	18:06	-6.5	-1.5	-1.5	-1.0	0.5	2.0	3.5	6.0	14		2.4	2.3	
14	29.8	NW	0:19	-9.5	-1.0	-1.0	-1.0	0.5	2.0	3.5	6.0	14		3.7	2.6	
15	95.3	NW	17:25	0.0	-1.5	-1.5	-1.5	0.0	1.5	3.5	5.5	14		3.2	2.1	
16	89.8	NW	0:10	-9.0	-1.0	-1.0	-0.5	0.5	2.0	3.5	6.0	14		4.5	1.4	
17	52.1	NNW	21:09	-4.5	-1.0	-1.0	-1.0	0.5	2.0	3.5	5.5	14		3.4	1.1	
18	24.3	SSW	12:26	-5.0	-1.0	-1.0	-0.5	0.5	2.0	3.5	6.0	14		3.4	2.2	
19	25.3	NE	21:23	-6.0	-1.0	-1.0	-0.5	0.5	2.0	3.5	6.0	15		4.2	2.2	
20	24.4	SSW	20:58	-14.0	-1.0	-0.5	-0.5	0.5	2.0	3.5	6.0	14		5.3	1.8	
21	36.1	N	20:50	-10.5	-1.0	-1.0	-0.5	0.5	2.0	3.5	6.0	14		3.4	3.1	
22	23.4	NNE	0:02	-14.0	-1.0	-1.0	-0.5	0.5	2.0	3.5	6.0	14		6.5	1.1	
23	24.6	SSW	6:46	-16.0	-1.0	-1.0	-0.5	0.5	2.0	3.5	5.5	14		2.7	2.6	
24	29.6	N	17:06	-1.5	-1.5	-1.5	-0.5	0.5	2.0	3.0	5.5	14		3.1	2.6	
25	73.6	NNW	20:42	-8.5	-1.0	-1.0	-0.5	0.5	2.0	3.0	5.5	14		3.2	3.0	
26	78.4	NNW	2:15	-21.5	-1.0	-1.0	-0.5	0.5	2.0	3.0	5.5	14		6.0	1.2	
27	24.3	WNNW	15:54	-23.5	-1.0	-1.0	-0.5	0.5	2.0	3.0	5.5	13		6.2	1.1	
28	24.7	SW	12:57	-19.0	-1.5	-1.0	-0.5	0.5	2.0	3.0	5.5	13		4.6	3.2	
29	32.3	SW	4:04	-17.5	-1.5	-1.5	-1.0	0.5	2.0	3.0	5.5	13		6.3	1.3	
30	26.2	NW	12:08	-22.0	-1.5	-1.5	-1.0	0.5	2.0	3.0	5.5	13		5.5	3.8	
31	25.0	NW	16:59	-15.0	-1.5	-1.5	-1.0	0.5	2.0	3.0	5.5	12		10.8	6.9	
<b>Total</b>																
<b>Mean</b>				-11.8	-1.5	-1.4	-0.9	0.6	2.2	3.5	5.9	13.8				
<b>Extreme</b>	95.3	NW	17:25													
<b>Date</b>	15															

**Site Extreme** 59.1 NW 11/2012 Automated Diffuse ring and new multiplexer installed Jan 17th

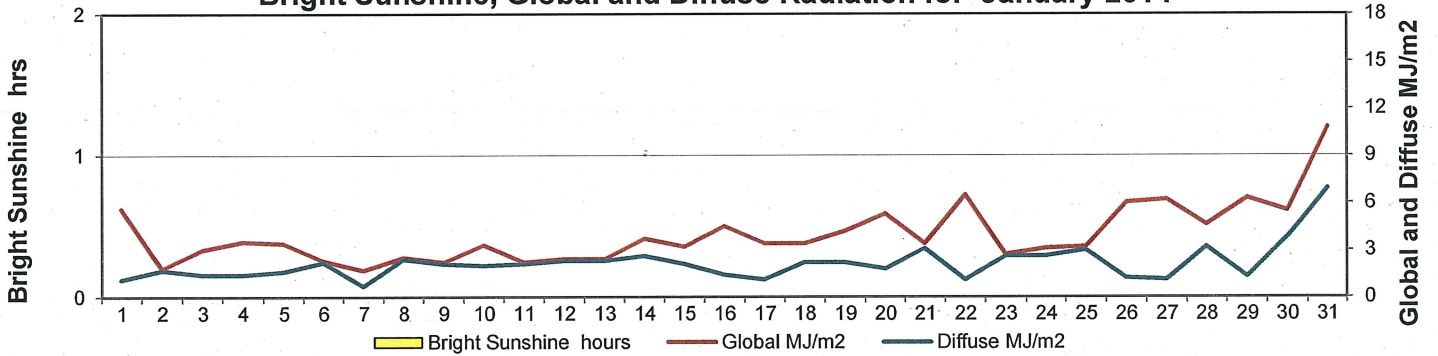
### GLOSSARY OF TERMS

Tm Mean Temperature	Bright Sunshine	The unobstructed direct radiation from the sun, as opposed to the shading of a location by clouds or by other atmospheric obstructions.
Growing (Tm-5°C); if Tm ≤ 5°C then GDD = 0	Diffuse	Radiation reaching the earth's surface after having been scattered from the direct solar beam
Heating (18°C-Tm); if Tm ≥ 18°C then HDD = 0	Global	The sum of the direct solar and diffuse radiation
Cooling (Tm-18°C); if Tm ≤ 18°C then CDD = 0	Relative Humidity	The ratio of the air's water vapour content to its water vapour capacity which changes with temperature.
T Trace of Precipitation	Air Pressure	The force exerted by the weight of a column of air above a given point
SOG Depth of snow-on-the-ground	Wind Gust	The daily highest instantaneous value recorded irrespective of direction and/or duration
Red Cell No data available		
Red Number Manual calculation		

### Wind Speed for January 2014

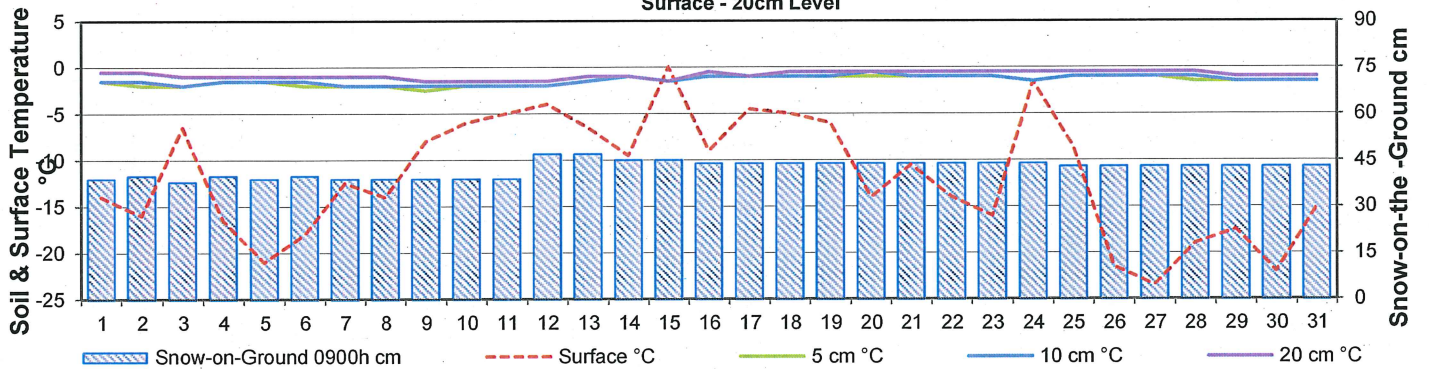


### Bright Sunshine, Global and Diffuse Radiation for January 2014



### Soil Temperatures for January 2014

Surface - 20cm Level



### Soil Temperatures for January 2014

50 - 300cm Level

