



SRC CLIMATE REFERENCE STATION DAILY DATA REPORT

CONSERVATION LEARNING CENTRE

Saskatchewan 53.03°N 105.77°W Estab. 2011

Preliminary

July 2014

Day	Temperature			Degree-days			Precipitation			Relative Humidity		Station Pressure <i>corrected to sea level</i>	
	Max	Min	Mean	Growing	Heating	Cooling	Weighing Gauge	Tipping Bucket	Notes	Max ½ hr Avg	Min ½ hr Avg	Max ½ hr Avg	Min ½ hr Avg
	°C	°C	°C	5°C base	18°C base	18°C base	mm	mm		%	%	mbar	mbar
1	22.5	13.1	17.8	12.8	0.2	0.0	0.0	0.0		85	45	1019	1013
2	22.8	12.5	17.7	12.7	0.3	0.0	11.5	12.6		92	60	1019	1017
3	25.2	14.0	19.6	14.6	0.0	1.6	0.0	0.0		93	44	1017	1011
4	27.4	16.6	22.0	17.0	0.0	4.0	1.0	1.6		88	60	1011	1005
5	25.8	14.3	20.1	15.1	0.0	2.1	0.0	0.0		93	51	1011	1007
6	25.8	13.1	19.5	14.5	0.0	1.5	8.6	9.0		91	42	1012	1008
7	23.5	13.8	18.7	13.7	0.0	0.7	0.0	0.0		88	49	1013	1008
8	23.0	14.2	18.6	13.6	0.0	0.6	0.0	0.0		88	43	1017	1013
9	27.2	13.6	20.4	15.4	0.0	2.4	0.0	0.0		81	46	1014	1004
10	24.5	14.9	19.7	14.7	0.0	1.7	0.4	1.2		92	29	1008	1001
11	22.3	13.3	17.8	12.8	0.2	0.0	0.0	0.0		81	44	1015	1008
12	20.4	12.2	16.3	11.3	1.7	0.0	0.1	0.0		84	33	1018	1013
13	20.9	9.6	15.3	10.3	2.7	0.0	0.0	0.0		81	44	1024	1018
14	24.0	9.6	16.8	11.8	1.2	0.0	0.0	0.0		94	41	1027	1022
15	25.6	10.5	18.1	13.1	0.0	0.1	0.0	0.0		94	37	1022	1014
16	27.8	11.9	19.9	14.9	0.0	1.9	0.0	0.0		90	39	1014	1006
17	25.6	16.1	20.9	15.9	0.0	2.9	5.7	8.2		92	44	1009	1002
18	22.5	14.3	18.4	13.4	0.0	0.4	31.2	28.2		94	52	1006	998
19	22.9	13.7	18.3	13.3	0.0	0.3	0.0	0.0		94	70	1006	998
20	21.9	12.2	17.1	12.1	0.9	0.0	0.0	0.0		89	47	1007	999
21	24.4	10.0	17.2	12.2	0.8	0.0	0.0	0.0		94	39	1016	1007
22	25.1	11.2	18.2	13.2	0.0	0.2	0.0	0.0		96	37	1023	1016
23	25.0	13.6	19.3	14.3	0.0	1.3	0.0	0.0		81	49	1023	1015
24	24.8	14.4	19.6	14.6	0.0	1.6	20.9	19.6		94	68	1014	1001
25	19.4	11.3	15.4	10.4	2.6	0.0	2.7	4.0		94	63	1003	1000
26	20.2	13.5	16.9	11.9	1.1	0.0	0.0	0.6		93	67	1020	1003
27	21.8	12.5	17.2	12.2	0.8	0.0	0.0	0.0		87	55	1024	1020
28	25.1	12.9	19.0	14.0	0.0	1.0	1.9	2.8		92	59	1024	1021
29	28.1	13.5	20.8	15.8	0.0	2.8	0.0	0.0		96	45	1022	1019
30	27.6	15.6	21.6	16.6	0.0	3.6	0.0	0.0		94	48	1020	1017
31	28.8	15.6	22.2	17.2	0.0	4.2	0.0	0.0		95	42	1017	1016
Total				425.4	12.5	34.9	84.0	87.8					
Avg	24.3	13.1	18.7				315.6	Cumulative ppt 2014					
Extreme	28.8	9.6					31.2	28.2		96	29	1027	998
Date	31	13					18	18		22	10	14	18
Site Extreme	31.0	7.2						127.8					
Date	02/2013	14/2013						2012					

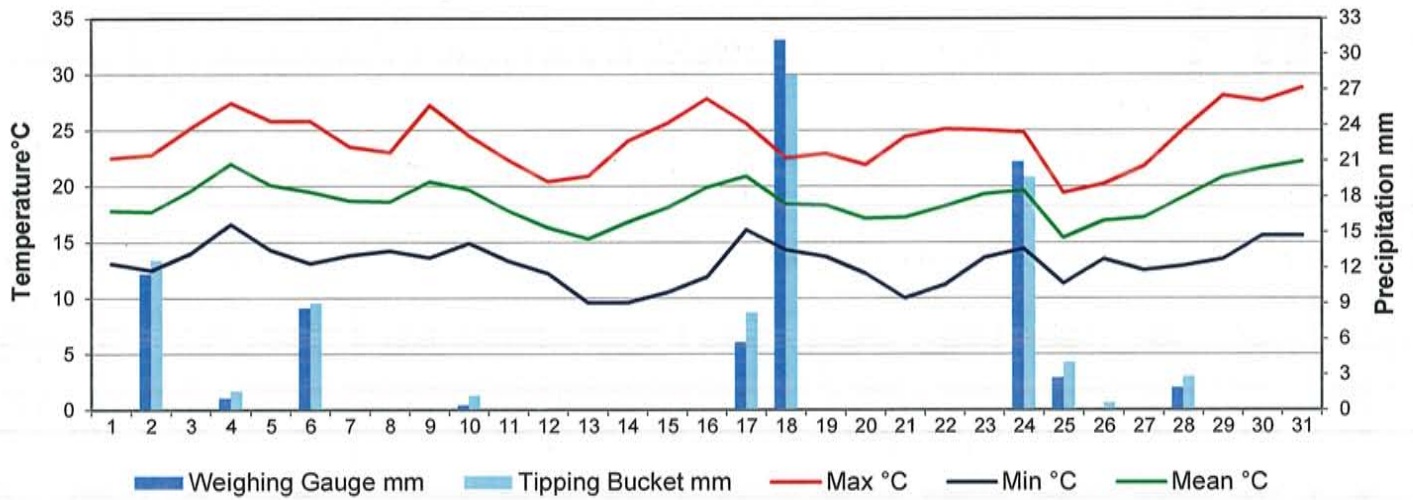


Agriculture and Agri-Food Canada

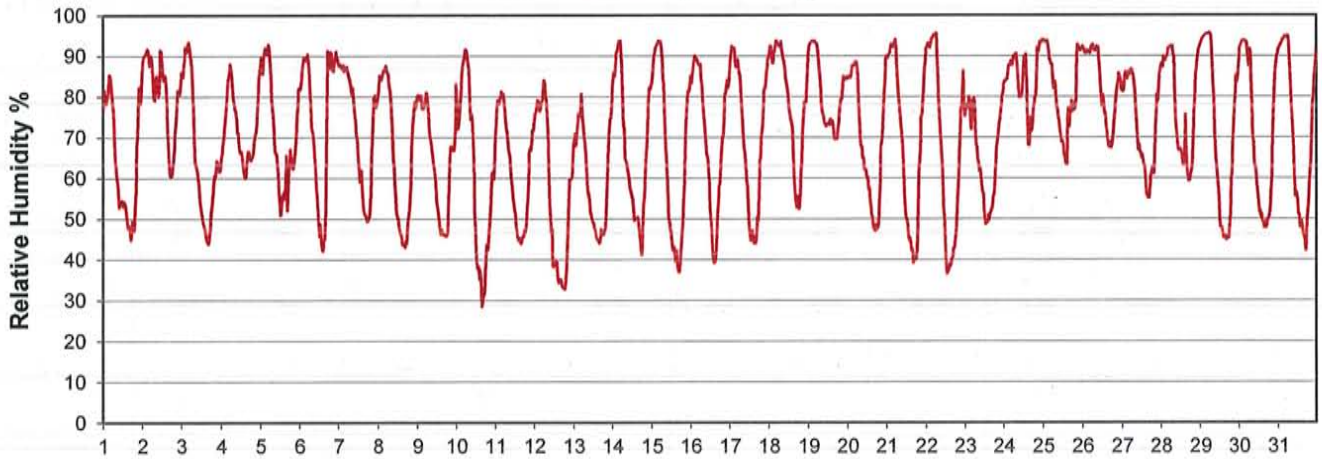
Agriculture et Agroalimentaire Canada



Temperature and Precipitation for July 2014



Relative Humidity for July 2014



Barometric Pressure Corrected to Sea Level for July 2014





SRC CLIMATE REFERENCE STATION DAILY DATA REPORT

CONSERVATION LEARNING CENTRE

Saskatchewan 53.03°N 105.77°W Estab. 2011

Preliminary

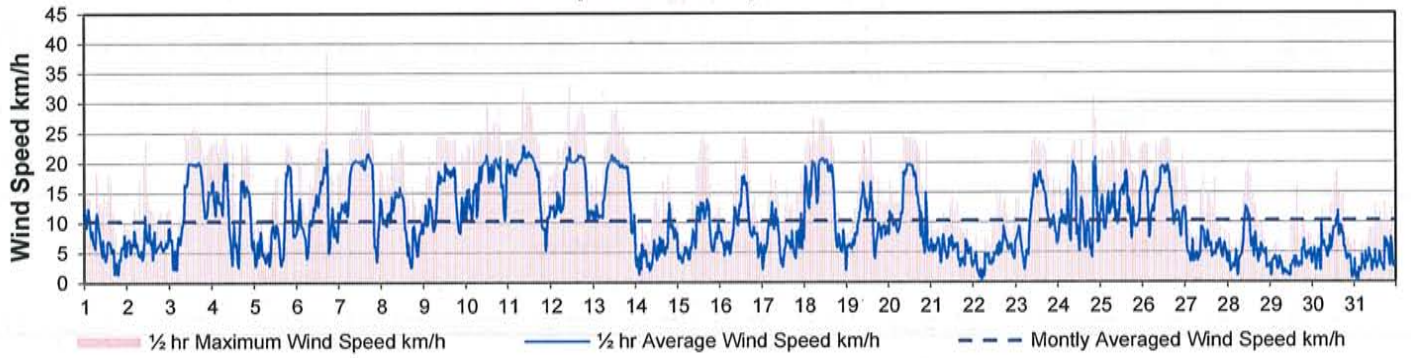
July 2014

Day	Wind Gust			Soil Temperatures at 0900hrs								Soil Moisture 30 cm	Radiation		
	Max km/h	Direction	Time	Surface °C	5 cm °C	10 cm °C	20 cm °C	50 cm °C	100 cm °C	150 cm °C	300 cm °C	0900hrs %	Bright Sunshine hours	Global MJ/m ²	Diffuse MJ/m ²
1	18.9	NNW	0:03	16.5	14.5	14.0	14.0	12.0	9.0	7.0	3.5	49	14.8	26.1	8.4
2	23.5	WNW	10:31	16.0	15.5	15.5	15.0	13.0	10.0	7.5	4.0	46	6.5	11.9	6.5
3	26.5	SSE	14:56	19.5	15.0	14.0	14.0	11.5	9.0	6.5	3.0	51	13.2	26.6	8.5
4	25.3	S	8:20	20.5	16.5	15.5	15.0	12.5	9.5	7.0	3.5	47	12.0	23.4	10.1
5	23.9	N	20:21	20.0	17.5	17.0	16.5	13.5	10.5	8.0	4.5	46	6.8	14.6	9.1
6	38.3	N	17:02	18.5	17.0	16.5	16.5	14.0	10.5	8.0	4.5	45	11.1	21.5	7.1
7	30.6	NW	16:46	15.5	16.0	15.5	15.5	13.0	10.0	7.5	3.5	46	13.2	24.2	8.7
8	23.8	NNE	11:08	17.5	16.5	16.5	16.0	14.0	10.5	8.0	4.0	45	13.9	26.8	6.7
9	24.8	SW	11:29	19.0	17.0	16.5	16.5	14.0	11.0	8.5	4.5	44	13.1	25.6	8.6
10	32.0	W	19:44	19.0	18.0	17.5	16.5	13.5	10.5	8.0	4.0	43	12.6	27.2	5.7
11	33.8	WNW	9:04	16.5	17.0	17.0	17.0	15.0	11.5	8.5	4.5	42	12.5	24.4	9.2
12	32.9	NNW	10:46	17.5	17.0	16.5	16.5	14.5	11.5	8.5	4.5	41	13.6	27.5	6.8
13	31.8	N	11:01	15.0	15.5	16.0	16.5	15.0	11.5	9.0	5.0	41	16.0	28.9	4.9
14	19.5	S	19:02	16.0	15.5	15.5	16.0	14.5	12.0	9.0	5.0	40	15.5	28.5	4.9
15	23.9	SW	14:33	16.5	16.0	16.0	16.0	14.5	12.0	9.0	5.0	40	13.9	26.4	6.6
16	24.3	SW	14:30	16.5	16.5	16.5	16.5	14.5	12.0	9.5	5.0	39	9.4	19.9	8.6
17	20.9	N	5:30	19.5	17.5	17.0	16.5	14.5	12.0	9.5	5.0	39	9.8	20.0	9.5
18	27.5	NNW	5:05	14.5	16.0	15.5	15.0	12.5	10.0	8.0	2.5	46	5.8	14.4	8.8
19	24.3	S	13:32	17.5	15.5	15.0	14.5	13.0	10.5	8.0	3.0	44	1.2	9.4	8.1
20	24.6	NW	8:39	18.5	16.5	15.5	15.5	14.0	11.5	9.0	4.0	44	13.3	25.7	7.5
21	15.3	WSW	14:59	15.5	16.0	16.0	16.5	15.0	12.5	10.0	5.5	43	13.1	23.4	9.9
22	17.4	ESE	12:30	16.5	16.5	16.5	16.5	15.0	12.5	10.0	5.5	42	13.3	24.7	8.5
23	24.1	S	10:44	19.5	17.5	17.0	17.0	15.5	12.5	10.0	5.5	41	12.3	23.1	9.7
24	30.8	WSW	20:04	17.5	17.0	17.0	16.5	14.0	11.5	9.0	4.0	41	3.6	11.2	5.4
25	25.0	SSW	14:52	14.5	16.0	15.5	15.5	13.5	11.0	9.0	3.5	45	7.2	16.6	9.2
26	24.1	NE	14:03	15.5	14.0	13.5	12.5	11.5	10.0	7.5	1.0	44	5.3	15.7	10.2
27	20.0	ESE	0:00	16.0	15.5	14.5	13.5	13.0	11.0	8.5	2.5	44	7.4	19.0	9.9
28	20.2	S	11:50	17.5	16.0	15.5	15.0	13.5	11.5	9.0	3.5	43	10.7	21.1	9.9
29	16.0	NW	15:22	18.5	18.0	17.5	17.5	15.5	12.5	10.5	5.5	43	14.5	25.2	5.9
30	18.9	S	14:50	19.5	18.5	18.5	18.0	16.0	13.0	10.5	5.5	42	12.9	24.5	6.5
31	13.5	SE	17:48	20.0	19.0	19.0	18.5	16.5	13.0	10.5	6.0	41	14.0	49.3	13.1
Total													342.5	706.8	252.5
Mean				17.4	16.5	16.1	15.9	13.9	11.2	8.7	4.2	43.5			
Extreme	38.3	N	17:02												
Date	6														
Site Extreme															

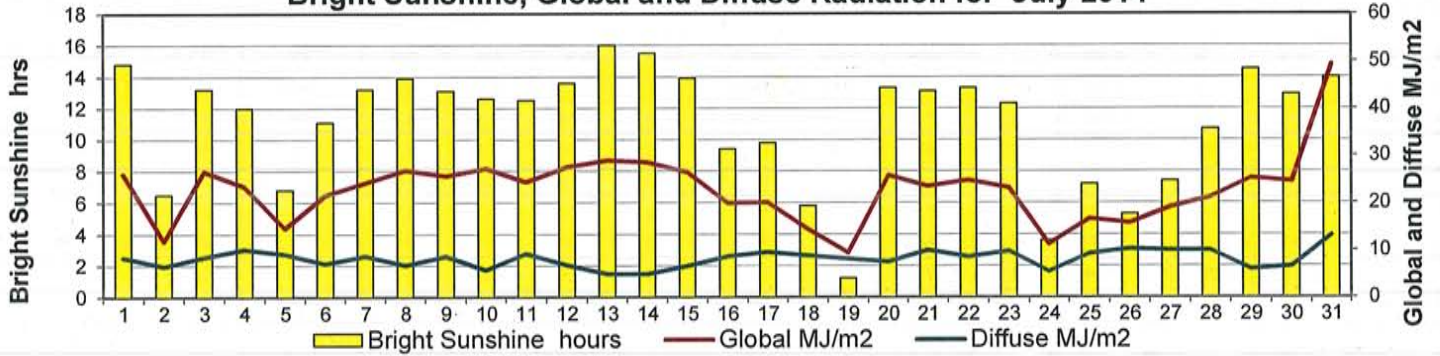
GLOSSARY OF TERMS

Tm Mean Temperature	Bright Sunshine is the unobstructed direct radiation from the sun, as opposed to the shading of a location by clouds or by other atmospheric obstructions.
Growing (Tm-5°C); if Tm ≤ 5°C then GDD = 0	
Heating (18°C-Tm); if Tm ≥ 18°C then HDD = 0	Diffuse is radiation reaching the earth's surface after having been scattered from the direct solar beam
Cooling (Tm-18°C); if Tm ≤ 18°C then CDD = 0	
T Trace of Precipitation	Relative Humidity The ratio of the air's water vapour content of its water vapour capacity which changes with temperature.
SOG Depth of snow-on-the-ground	
Red Cell no data available	Air Pressure The force exerted by the weight of a column of air above a given point
Red Number manual calculation	Wind Gust The daily highest instantaneous value recorded irrespective of direction and/or duration

Wind Speed for July 2014

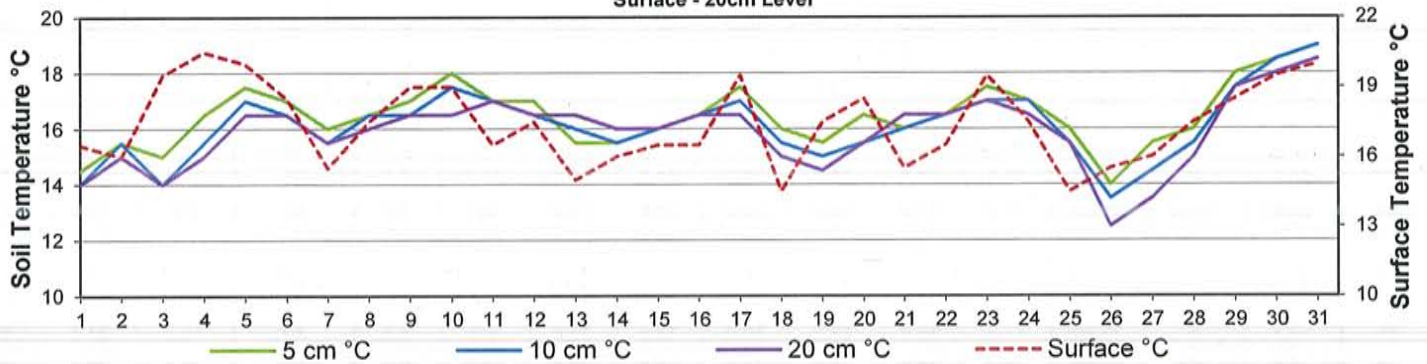


Bright Sunshine, Global and Diffuse Radiation for July 2014



Soil Temperatures for July 2014

Surface - 20cm Level



Soil Temperatures for July 2014

50 - 300cm Level

