



SRC CLIMATE REFERENCE STATION DAILY DATA REPORT

CONSERVATION LEARNING CENTRE

Saskatchewan 53.03°N 105.77°W Estab. 2011

Preliminary

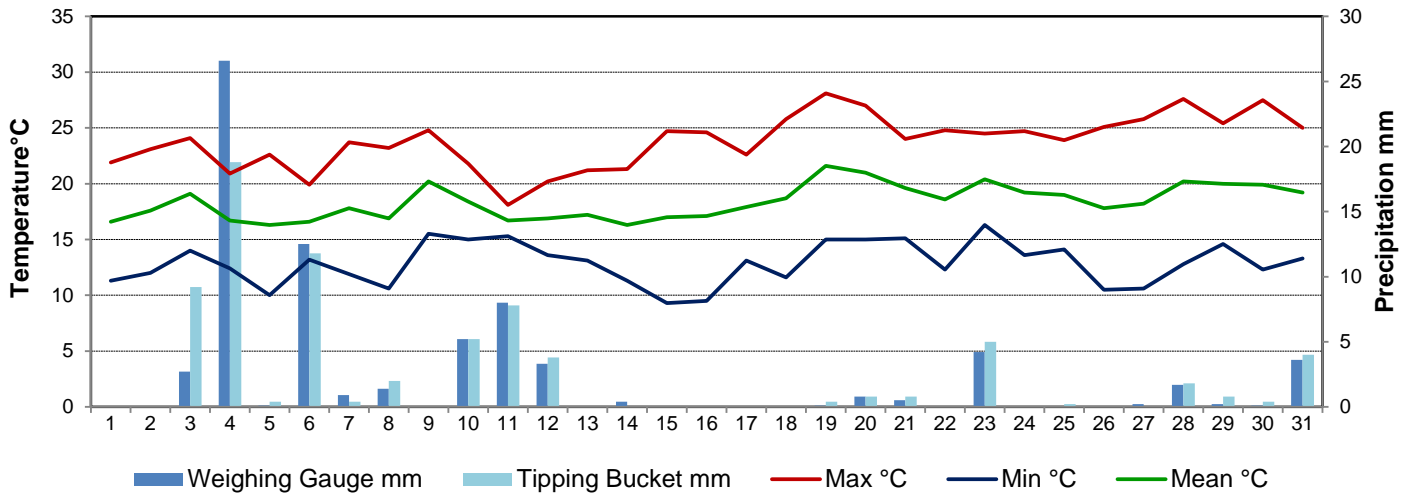
July 2016

Day	Temperature			Degree-days			Precipitation			Relative Humidity		Station Pressure <i>corrected to sea level</i>	
	Max	Min	Mean	Growing	Heating	Cooling	Weighing Gauge	Tipping Bucket	Notes	Max ½ hr Avg	Min ½ hr Avg	Max ½ hr Avg	Min ½ hr Avg
	°C	°C	°C	5°C base	18°C base	18°C base	mm	mm		%	%	mbar	mbar
1	21.9	11.3	16.6	11.6	1.4	0.0	0.0	0.0		85	49	1018	1014
2	23.1	12.0	17.6	12.6	0.4	0.0	0.0	0.0		89	53	1014	1010
3	24.1	14.0	19.1	14.1	0.0	1.1	2.7	9.2		92	61	1010	1003
4	20.9	12.4	16.7	11.7	1.3	0.0	26.6	18.8		93	53	1007	1001
5	22.6	10.0	16.3	11.3	1.7	0.0	0.1	0.4		93	53	1007	1006
6	19.9	13.2	16.6	11.6	1.4	0.0	12.5	11.8		92	68	1007	1005
7	23.7	11.9	17.8	12.8	0.2	0.0	0.9	0.4		94	52	1010	1006
8	23.2	10.6	16.9	11.9	1.1	0.0	1.4	2.0		94	57	1012	1010
9	24.8	15.5	20.2	15.2	0.0	2.2	0.0	0.0		92	48	1010	1008
10	21.8	15.0	18.4	13.4	0.0	0.4	5.2	5.2		93	68	1008	1004
11	18.1	15.3	16.7	11.7	1.3	0.0	8.0	7.8		92	84	1003	997
12	20.2	13.6	16.9	11.9	1.1	0.0	3.3	3.8		92	64	1004	997
13	21.2	13.1	17.2	12.2	0.8	0.0	0.0	0.0		89	59	1016	1004
14	21.3	11.3	16.3	11.3	1.7	0.0	0.4	0.0		92	50	1019	1016
15	24.7	9.3	17.0	12.0	1.0	0.0	0.0	0.0		94	32	1019	1014
16	24.6	9.5	17.1	12.1	0.9	0.0	0.0	0.0		93	41	1014	1008
17	22.6	13.1	17.9	12.9	0.1	0.0	0.0	0.0		93	54	1016	1008
18	25.8	11.6	18.7	13.7	0.0	0.7	0.0	0.0		94	49	1017	1013
19	28.1	15.0	21.6	16.6	0.0	3.6	0.1	0.4		91	46	1013	1006
20	27.0	15.0	21.0	16.0	0.0	3.0	0.8	0.8		92	48	1008	1005
21	24.0	15.1	19.6	14.6	0.0	1.6	0.5	0.8		87	50	1012	1008
22	24.8	12.3	18.6	13.6	0.0	0.6	0.0	0.0		89	47	1017	1010
23	24.5	16.3	20.4	15.4	0.0	2.4	4.2	5.0		92	50	1010	1005
24	24.7	13.6	19.2	14.2	0.0	1.2	0.0	0.0		86	45	1012	1009
25	23.9	14.1	19.0	14.0	0.0	1.0	0.0	0.2		87	41	1016	1010
26	25.1	10.5	17.8	12.8	0.2	0.0	0.0	0.0		93	39	1019	1017
27	25.8	10.6	18.2	13.2	0.0	0.2	0.2	0.0		93	41	1020	1018
28	27.6	12.8	20.2	15.2	0.0	2.2	1.7	1.8		90	42	1019	1016
29	25.4	14.6	20.0	15.0	0.0	2.0	0.2	0.8		92	53	1016	1009
30	27.5	12.3	19.9	14.9	0.0	1.9	0.1	0.4		94	45	1009	1004
31	25.0	13.3	19.2	14.2	0.0	1.2	3.6	4.0		91	55	1006	1002
Total				413.7	14.6	25.3	72.5	73.6					
Avg	23.8	12.8	18.3				192.9	Cumulative ppt					
Extreme	28.1	9.3					26.6	18.8		94	32	1020	997
Date	19	15					4	4		7	15	27	11

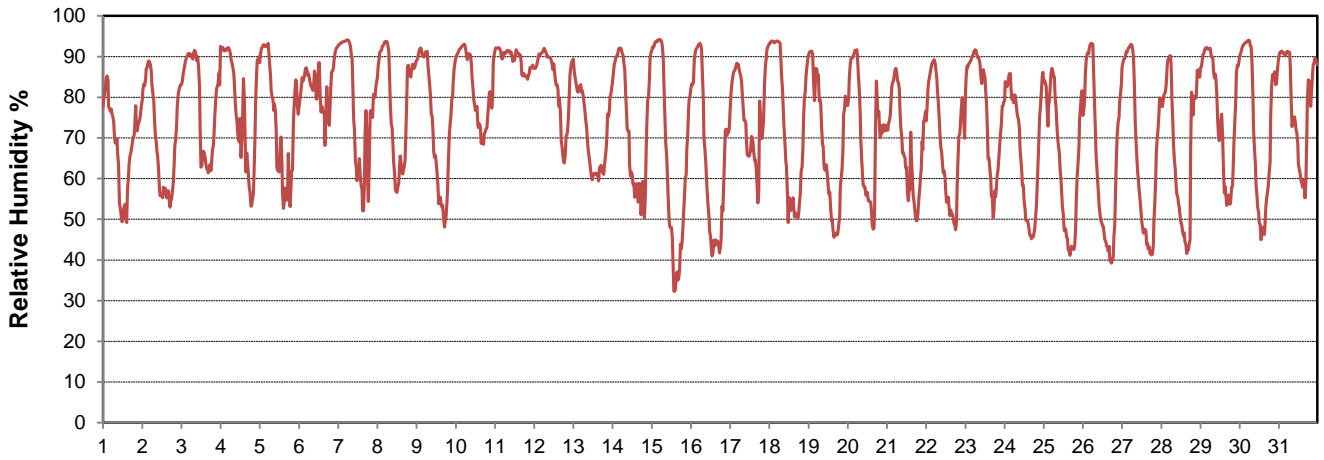
SRC proudly recognizes the following CRS supporters:



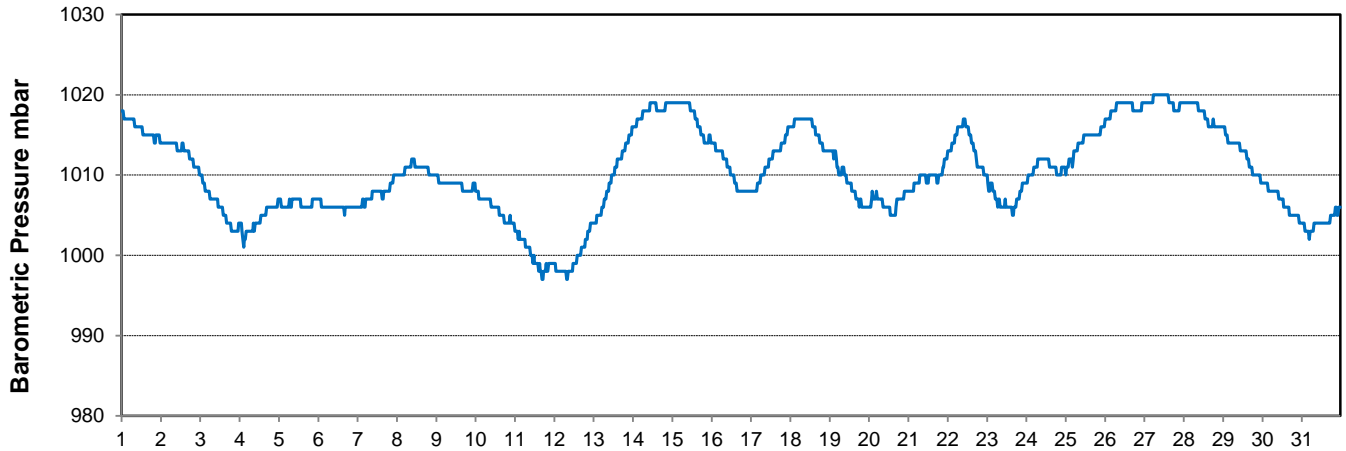
Temperature and Precipitation for July 2016



Relative Humidity for July 2016



Barometric Pressure Corrected to Sea Level for July 2016





SRC CLIMATE REFERENCE STATION DAILY DATA REPORT

CONSERVATION LEARNING CENTRE

Saskatchewan 53.03°N 105.77°W Estab. 2011

Preliminary

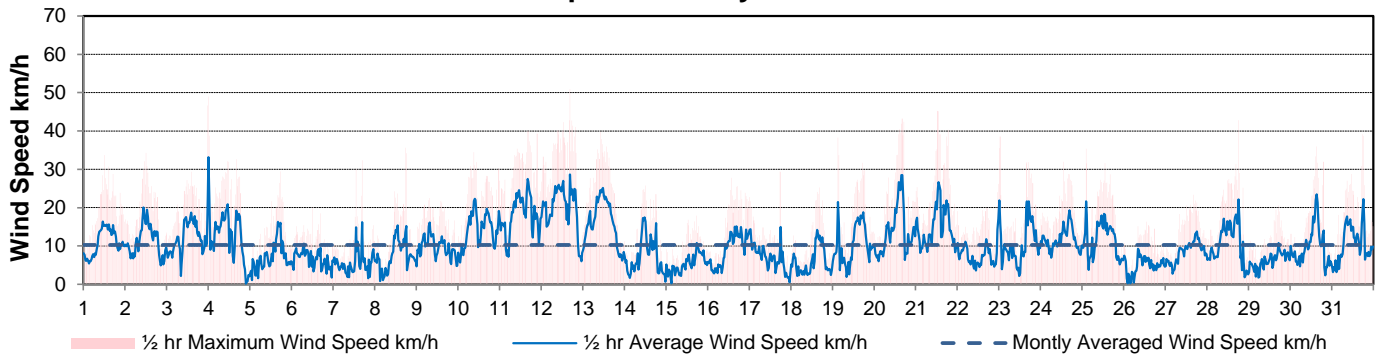
July 2016

Day	Wind Gust			Soil Temperatures at 0900hrs								Soil Moisture	Radiation		
	Max	Direction	Time	Surface	5 cm	10 cm	20 cm	50 cm	100 cm	150 cm	300 cm	0900hrs	Bright Sunshine	Global	Diffuse
	km/h			°C	°C	°C	°C	°C	°C	°C	°C	%	hours	MJ/m ²	MJ/m ²
1	33.7	ESE	12:09	17.0	15.5	15.5	15.5	13.5	10.5	8.5	5.0	30	6.8	19.4	11.0
2	34.3	S	12:21	20.0	16.0	16.0	15.5	13.5	11.0	8.5	5.5	30	11.2	22.8	11.5
3	46.7	W	23:53	17.5	16.5	16.5	15.5	13.5	11.0	9.0	5.5	30	9.0	21.5	9.8
4	49.0	NW	0:12	17.0	16.5	16.0	15.5	13.5	11.0	8.5	5.0	35	9.4	21.0	10.1
5	29.4	E	17:43	18.0	15.5	15.5	15.5	14.0	11.0	9.0	5.5	34	11.6	23.2	8.5
6	20.0	SW	12:01	16.0	16.5	16.5	15.5	14.0	11.0	9.0	5.0	34	2.7	12.2	9.5
7	32.4	W	16:41	16.0	16.5	16.0	15.5	14.0	11.0	9.0	5.0	35	8.3	20.2	7.7
8	35.6	S	17:59	18.5	16.5	16.5	16.0	14.5	11.5	9.0	5.5	34	6.7	16.1	8.8
9	22.5	E	7:39	18.5	17.0	17.0	16.0	14.0	11.5	9.0	5.5	34	12.0	26.5	7.1
10	34.4	ENE	9:16	15.5	18.0	17.5	17.0	14.5	11.5	9.5	5.5	34	3.5	13.6	10.0
11	40.0	NNE	16:37	17.0	17.5	17.0	16.5	14.0	11.5	9.0	5.0	35	0.1	4.4	3.8
12	50.9	N	16:42	16.0	16.0	15.0	15.0	12.5	10.5	8.5	3.5	36	0.3	6.3	5.5
13	39.8	N	10:23	18.0	16.0	15.5	15.5	14.0	11.5	9.5	5.5	36	14.1	26.1	9.1
14	25.8	NNE	12:04	17.0	16.0	16.0	16.0	14.5	12.0	10.0	6.0	35	10.1	22.4	12.4
15	17.9	SW	17:44	16.0	16.0	16.0	16.0	14.5	12.0	10.0	6.0	35	15.7	28.3	6.3
16	27.8	WSW	13:44	17.5	16.5	16.5	16.5	15.0	12.5	10.0	6.0	34	13.1	26.6	6.8
17	29.4	NW	17:57	18.5	17.5	17.0	16.5	15.0	12.5	10.0	6.0	34	8.0	16.6	11.0
18	25.3	SW	16:57	18.0	17.0	16.5	16.5	15.0	12.5	10.0	6.0	34	11.7	21.9	8.9
19	38.3	WSW	3:12	20.0	17.5	17.5	17.0	15.0	12.5	10.5	6.0	33	13.7	26.8	7.1
20	43.2	WSW	16:00	22.0	18.0	18.0	17.5	15.0	12.5	10.5	6.0	33	11.1	24.9	5.3
21	45.2	WNW	12:56	20.5	18.5	18.0	17.5	15.5	12.5	10.5	6.0	33	12.3	21.5	11.0
22	26.2	S	23:50	17.5	17.5	17.5	17.5	16.0	13.0	10.5	6.5	32	13.8	25.6	9.0
23	38.5	S	0:30	17.5	18.5	18.5	17.5	15.5	13.0	10.5	6.0	32	5.3	15.1	9.2
24	32.0	WNW	13:09	17.5	18.0	18.0	17.5	16.0	13.0	10.5	6.5	32	10.8	22.7	10.2
25	35.4	WNW	2:07	19.5	18.5	18.0	17.5	16.0	13.0	11.0	6.5	31	13.9	26.9	7.6
26	16.3	E	13:22	17.0	17.0	17.5	17.5	16.0	13.0	11.0	6.5	31	14.1	25.6	8.9
27	23.4	WSW	16:27	18.5	17.0	17.0	17.5	16.0	13.5	11.0	6.5	30	14.6	25.2	10.2
28	42.8	N	18:01	20.5	17.5	17.5	17.5	16.0	13.5	11.0	6.5	30	11.2	23.1	6.5
29	20.6	S	17:05	19.0	18.5	18.0	17.5	16.0	13.5	11.0	6.5	29	7.9	17.7	11.9
30	35.9	S	15:06	20.0	18.0	18.0	17.5	16.0	13.5	11.0	6.5	29	10.4	21.4	7.5
31	39.1	W	17:58	20.0	18.5	18.0	18.0	16.0	13.5	11.0	6.5	29	9.1	40.4	15.6
Total													302.5	666.0	277.8
Mean				18.1	17.1	16.9	16.6	14.8	12.1	9.9	5.8	32.7			
Extreme	50.9	N	16:42												
Date	12														

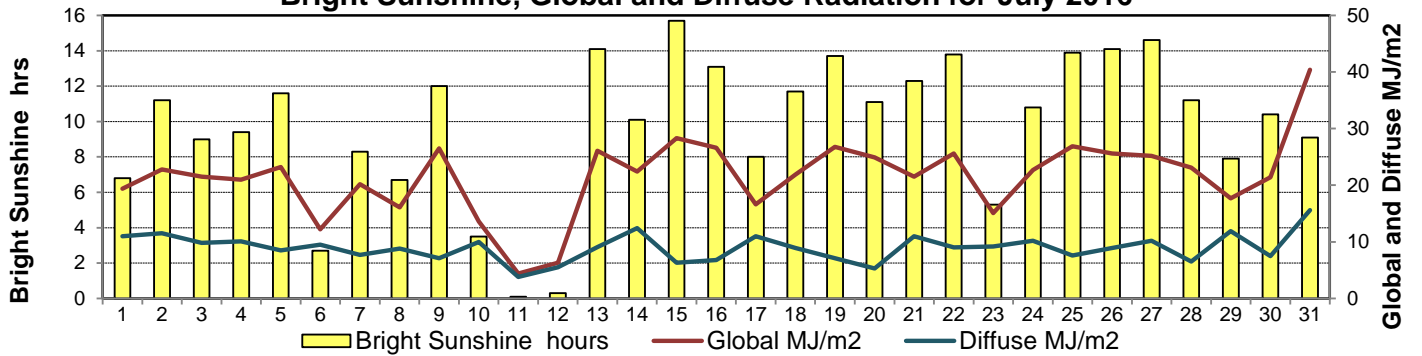
GLOSSARY OF TERMS

Degree-days	Radiation
Tm Mean Temperature	Bright Sunshine is the unobstructed direct radiation from the sun, as opposed to the shading of a location by clouds or by other atmospheric obstructions.
Growing (Tm-5°C); if Tm ≤ 5°C then GDD = 0	
Heating (18°C-Tm); if Tm ≥ 18°C then HDD = 0	Diffuse is radiation reaching the earth's surface after having been scattered from the direct solar beam
Cooling (Tm-18°C); if Tm ≤ 18°C then CDD = 0	Global is the sum of the direct solar and diffuse radiation
T Trace of Precipitation	Relative Humidity The ratio of the air's water vapour content to its water vapour capacity which changes with temperature.
SOG Depth of snow-on-the-ground	
Red Cell no data available	Air Pressure The force exerted by the weight of a column of air above a given point
Red Number manual calculation	Wind Gust The daily highest instantaneous value recorded irrespective of direction and/or duration

Wind Speed for July 2016

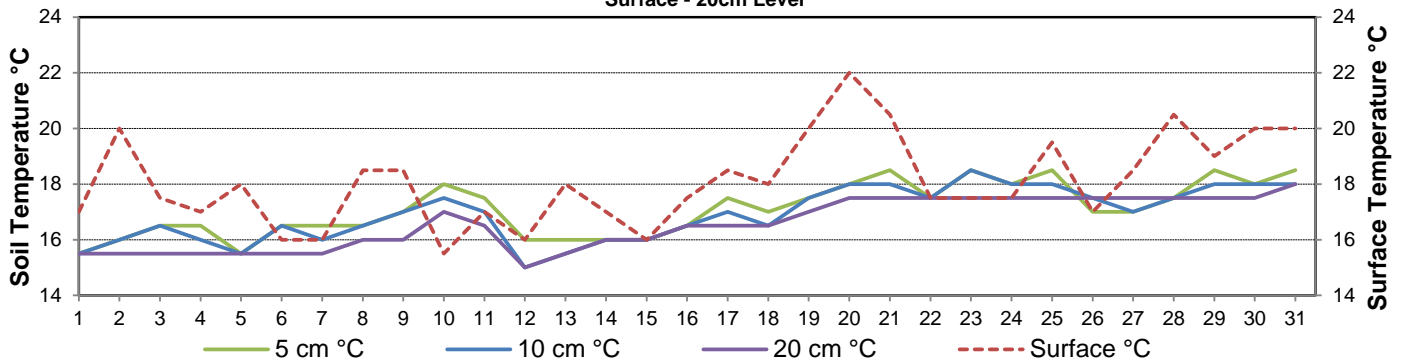


Bright Sunshine, Global and Diffuse Radiation for July 2016



Soil Temperatures for July 2016

Surface - 20cm Level



Soil Temperatures for July 2016

50 - 300cm Level

