



# SRC CLIMATE REFERENCE STATION DAILY DATA REPORT

## CONSERVATION LEARNING CENTRE

Saskatchewan 53.03°N 105.77°W Estab. 2011

Preliminary

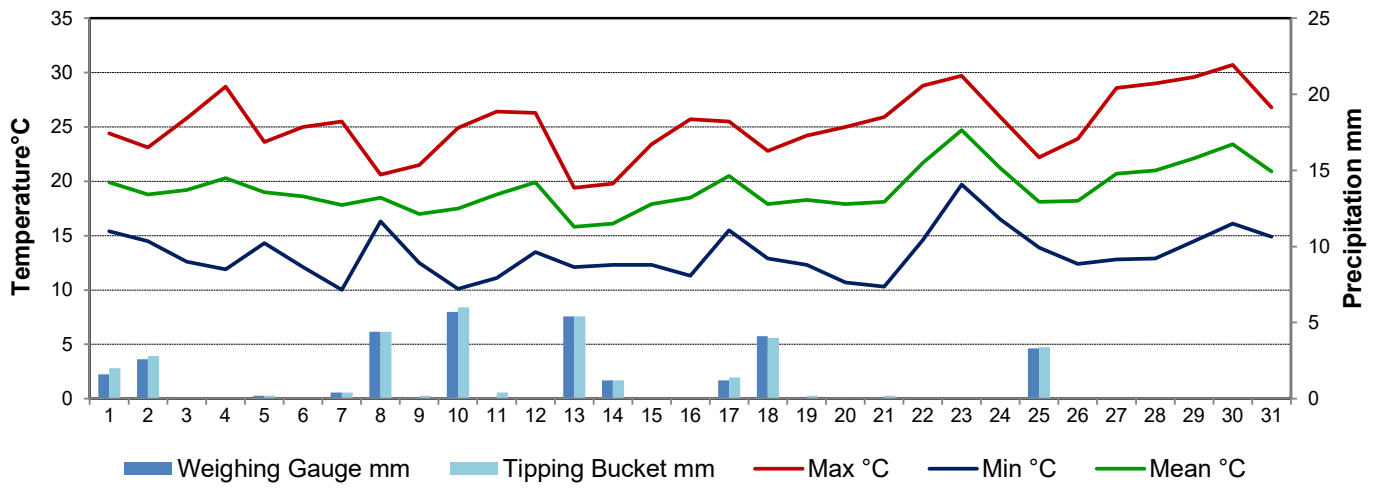
**July 2020**

Day	Temperature			Degree-days			Precipitation			Relative Humidity		Station Pressure <i>corrected to sea level</i>	
	Max	Min	Mean	Growing	Heating	Cooling	Weighing Gauge	Tipping Bucket	Notes	Max ½ hr Avg	Min ½ hr Avg	Max ½ hr Avg	Min ½ hr Avg
	°C	°C	°C	5°C base	18°C base	18°C base	mm	mm		%	%	mbar	mbar
1	24.4	15.4	19.9	14.9	0.0	1.9	1.6	2.0		100	53	1006	1001
2	23.1	14.5	18.8	13.8	0.0	0.8	2.6	2.8		84	50	1009	1006
3	25.8	12.6	19.2	14.2	0.0	1.2	0.0	0.0		99	41	1014	1009
4	28.7	11.9	20.3	15.3	0.0	2.3	0.0	0.0		100	49	1014	1009
5	23.6	14.3	19.0	14.0	0.0	1.0	0.2	0.2		94	53	1011	1010
6	25.0	12.1	18.6	13.6	0.0	0.6	0.0	0.0		95	47	1013	1011
7	25.5	10.0	17.8	12.8	0.2	0.0	0.4	0.4		100	58	1011	1002
8	20.6	16.3	18.5	13.5	0.0	0.5	4.4	4.4		97	73	1002	996
9	21.5	12.5	17.0	12.0	1.0	0.0	0.1	0.2		100	66	1012	1002
10	24.9	10.1	17.5	12.5	0.5	0.0	5.7	6.0		100	56	1014	1011
11	26.4	11.1	18.8	13.8	0.0	0.8	0.0	0.4		100	42	1016	1012
12	26.3	13.5	19.9	14.9	0.0	1.9	0.0	0.0		94	57	1012	1002
13	19.4	12.1	15.8	10.8	2.2	0.0	5.4	5.4		99	71	1003	1001
14	19.8	12.3	16.1	11.1	1.9	0.0	1.2	1.2		91	67	1003	1001
15	23.4	12.3	17.9	12.9	0.1	0.0	0.0	0.0		90	46	1007	1003
16	25.7	11.3	18.5	13.5	0.0	0.5	0.0	0.0		92	42	1009	1007
17	25.5	15.5	20.5	15.5	0.0	2.5	1.2	1.4		95	56	1006	1003
18	22.8	12.9	17.9	12.9	0.1	0.0	4.1	4.0		95	65	1009	1006
19	24.2	12.3	18.3	13.3	0.0	0.3	0.0	0.2		100	57	1013	1009
20	25.0	10.7	17.9	12.9	0.1	0.0	0.1	0.0		100	56	1014	1013
21	25.9	10.3	18.1	13.1	0.0	0.1	0.1	0.2		100	54	1014	1010
22	28.8	14.6	21.7	16.7	0.0	3.7	0.0	0.0		97	55	1010	1004
23	29.7	19.7	24.7	19.7	0.0	6.7	0.0	0.0		97	75	1005	1002
24	25.9	16.5	21.2	16.2	0.0	3.2	0.0	0.0		100	59	1006	1000
25	22.2	13.9	18.1	13.1	0.0	0.1	3.3	3.4		100	64	1009	1003
26	23.9	12.4	18.2	13.2	0.0	0.2	0.0	0.0		95	51	1015	1009
27	28.6	12.8	20.7	15.7	0.0	2.7	0.0	0.0		99	43	1016	1012
28	29.0	12.9	21.0	16.0	0.0	3.0	0.0	0.0		100	47	1012	1010
29	29.6	14.5	22.1	17.1	0.0	4.1	0.0	0.0		99	50	1014	1010
30	30.7	16.1	23.4	18.4	0.0	5.4	0.0	0.0		100	55	1018	1013
31	26.8	14.9	20.9	15.9	0.0	2.9	0.0	0.0		96	43	1022	1018
Total				443.3	6.1	46.4	30.4	32.2					
Avg	25.2	13.3	19.3				265.1	Cumulative ppt					
Extreme	30.7	10.0					5.7	6.0		100	41	1022	996
Date	30	7					10	10		1	3	31	8

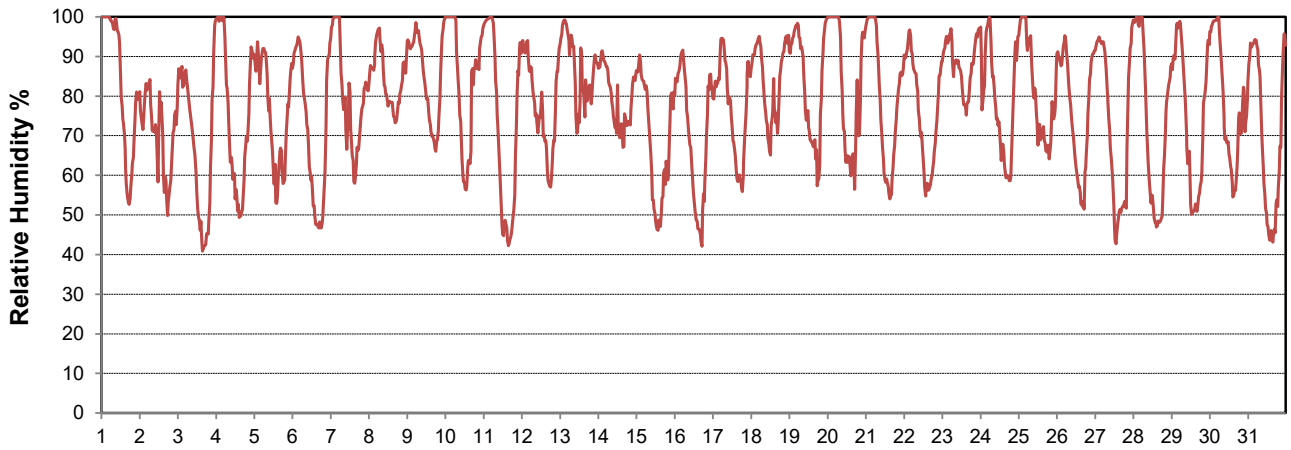
**SRC proudly recognizes the following CRS supporters:**



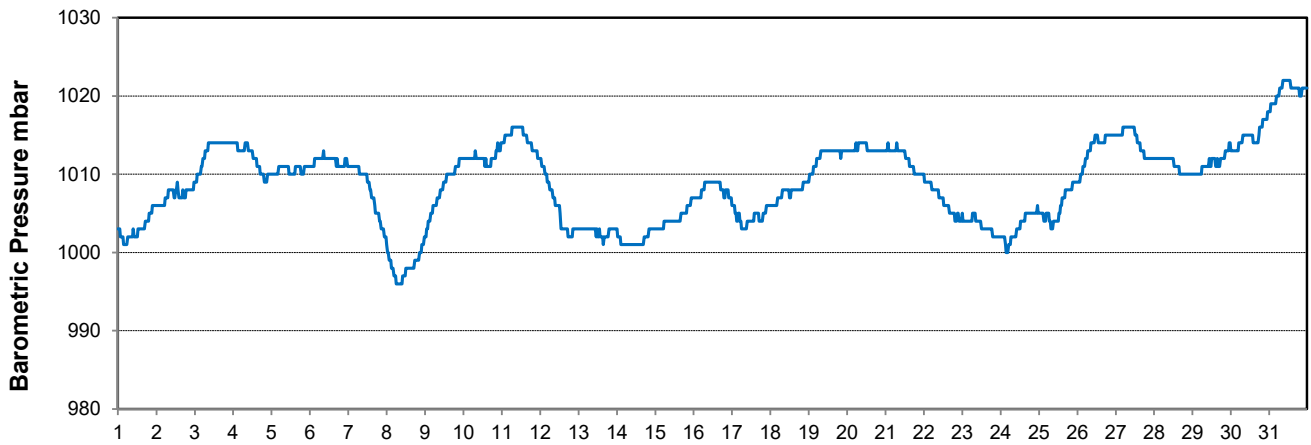
### Temperature and Precipitation for July 2020



### Relative Humidity for July 2020



### Barometric Pressure Corrected to Sea Level for July 2020





# SRC CLIMATE REFERENCE STATION DAILY DATA REPORT

## CONSERVATION LEARNING CENTRE

Saskatchewan 53.03°N 105.77°W Estab. 2011

Preliminary

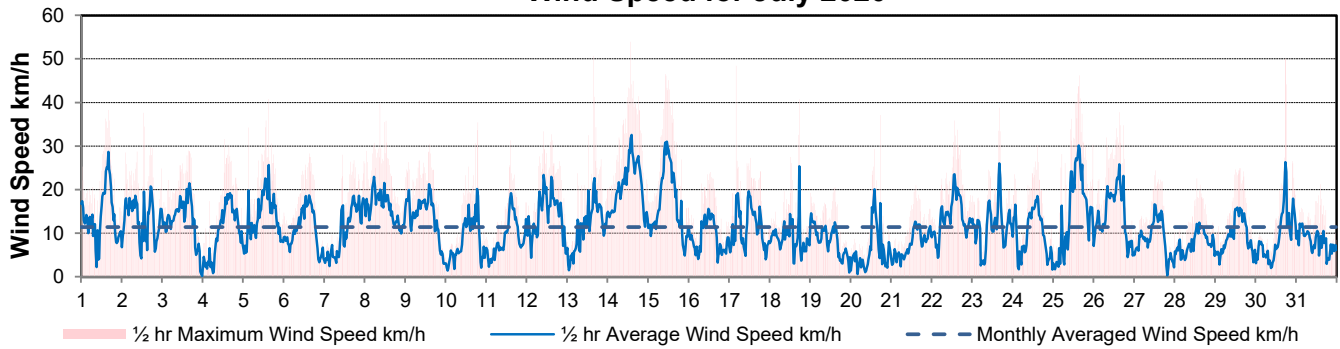
July 2020

Day	Wind Gust			Soil Temperatures at 0900hrs								Radiation				
	Max	Direction	Time	Surface	5 cm	10 cm	20 cm	50 cm	100 cm	150 cm	300 cm	Bright Sunshine	Bright Sunshine Possible	% possible	Global	Diffuse
	km/h			°C	°C	°C	°C	°C	°C	°C	°C	hours	hours		MJ/m <sup>2</sup>	MJ/m <sup>2</sup>
1	38.3	S	16:07	15.0	15.0	14.5	13.5	11.0	8.5	6.0	2.5	7.8	16.8	46.3	17.2	6.7
2	37.6	SW	13:30	19.5	15.0	15.5	14.5	12.0	9.0	6.5	3.5	9.7	16.8	57.7	17.3	6.1
3	28.9	S	15:34	18.0	15.0	15.5	14.5	12.0	9.0	6.5	3.5	16.3	16.8	97.1	29.9	3.8
4	31.6	S	13:21	22.0	15.5	16.0	15.0	13.0	9.5	7.0	3.5	14.8	16.8	88.3	27.2	6.5
5	40.8	WNW	15:16	18.0	16.5	17.0	16.0	13.0	9.5	7.0	3.5	9.5	16.7	56.8	21.7	7.2
6	28.3	WNW	15:21	18.0	15.5	16.5	15.5	13.5	9.5	7.0	3.5	14.8	16.7	88.6	26.5	6.0
7	28.0	S	11:15	19.0	15.5	16.0	15.5	13.5	10.0	7.5	4.0	9.8	16.7	58.8	21.3	8.5
8	39.7	S	9:28	16.5	17.0	17.0	15.5	13.0	10.0	7.0	3.5	1.3	16.7	7.8	10.9	9.0
9	30.5	NNE	14:53	14.5	16.0	17.0	15.5	13.5	10.0	7.5	3.5	8.0	16.6	48.1	19.0	7.6
10	35.4	NNE	19:00	17.0	15.0	16.0	15.5	13.5	10.5	8.0	4.0	9.1	16.6	54.9	20.6	7.8
11	31.3	SSW	14:36	17.0	15.5	16.5	15.5	13.5	10.5	8.0	4.0	15.3	16.6	92.4	28.6	4.0
12	33.4	SSE	10:28	19.5	16.5	17.0	16.0	14.0	10.5	8.0	4.0	8.9	16.5	53.9	17.9	9.6
13	50.7	NNW	15:53	14.5	16.0	17.0	16.0	14.0	10.5	8.0	4.0	5.1	16.5	30.9	13.1	8.5
14	54.0	WNW	13:51	15.5	15.0	15.5	15.0	13.5	10.5	8.0	3.5	7.2	16.4	43.8	17.9	11.1
15	46.5	WNW	10:23	17.5	15.0	15.5	15.0	13.5	11.0	8.5	4.0	9.9	16.4	60.4	23.0	5.3
16	24.0	W	13:12	18.5	15.0	15.5	15.0	13.5	11.0	8.5	4.5	14.1	16.4	86.2	26.8	4.2
17	48.4	NW	4:17	17.5	16.5	17.0	16.0	14.0	11.0	8.5	4.5	9.5	16.3	58.2	22.0	7.7
18	40.7	W	17:40	19.0	16.5	17.0	16.0	14.0	11.0	8.5	4.5	8.3	16.3	51.0	15.9	7.1
19	20.5	SW	14:30	17.0	16.0	16.5	16.0	14.0	11.0	8.5	4.5	9.3	16.2	57.3	19.7	12.1
20	37.1	NNW	17:34	17.0	16.0	16.5	16.0	14.5	11.5	9.0	4.5	11.9	16.2	73.5	23.1	7.8
21	21.0	SSE	14:31	18.5	16.0	17.0	16.5	14.5	11.5	9.0	4.5	12.1	16.1	75.0	25.3	6.5
22	35.9	S	13:43	20.0	17.5	18.0	17.0	14.5	11.5	9.0	4.5	13.2	16.1	82.0	24.8	6.7
23	38.8	S	16:16	22.5	19.0	19.5	17.5	15.0	11.5	9.0	4.5	3.6	16.1	22.4	14.0	10.1
24	30.2	NW	14:43	23.0	19.0	19.5	18.0	15.0	11.5	9.0	4.5	13.7	16.0	85.6	26.7	4.3
25	46.2	WNW	15:42	19.5	18.5	19.0	18.0	15.5	12.0	9.0	5.0	7.0	16.0	43.9	18.3	8.7
26	37.8	NW	15:08	18.0	16.5	17.5	17.0	15.5	12.0	9.5	5.0	12.5	15.9	78.7	25.0	4.8
27	24.4	W	12:36	19.0	16.5	17.5	17.0	15.5	12.0	9.5	5.0	15.0	15.8	94.7	26.7	3.9
28	22.6	SSE	13:27	22.0	17.5	18.0	17.0	15.5	12.5	9.5	5.0	15.2	15.8	96.3	26.7	3.0
29	25.0	ESE	15:12	21.0	18.0	18.5	17.5	15.5	12.5	9.5	5.0	14.7	15.7	93.4	24.8	4.6
30	50.0	NW	17:45	22.0	18.5	19.0	18.0	16.0	12.5	10.0	5.0	14.1	15.7	89.9	24.9	5.1
31	21.2	NNW	14:34	19.5	18.5	19.5	18.5	16.0	12.5	10.0	5.0	13.7	15.6	87.7	24.2	5.1
Total												335.4	505.8	66.3	681.0	209.4
Mean				18.6	16.4	17.0	16.1	14.0	10.8	8.3	4.2					
Extreme	54.0	WNW	13:51													
Date	14															

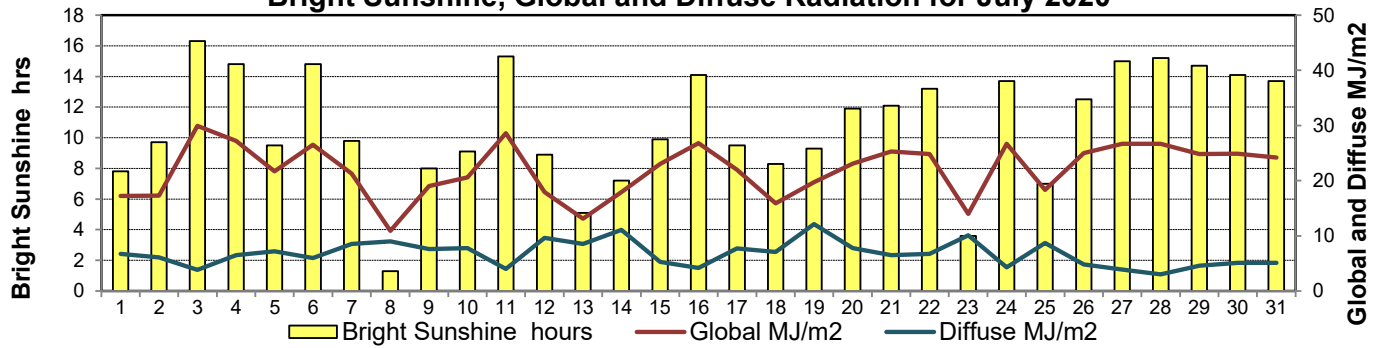
### GLOSSARY OF TERMS

<b>Degree-days</b>	<b>Radiation</b>
Tm Mean Temperature	Bright Sunshine is the unobstructed direct radiation from the sun, as opposed to the shading of a location by clouds or by other atmospheric obstructions.
Growing (Tm-5°C); if Tm ≤ 5°C then GDD = 0	Diffuse is radiation reaching the earth's surface after having been scattered from the direct solar beam
Heating (18°C-Tm); if Tm ≥ 18°C then HDD = 0	Global is the sum of the direct solar and diffuse radiation
Cooling (Tm-18°C); if Tm ≤ 18°C then CDD = 0	<b>Relative Humidity</b> The ratio of the air's water vapour content of its water vapour capacity which changes with temperature.
T Trace of Precipitation	<b>Air Pressure</b> The force exerted by the weight of a column of air above a given point
<b>SOG</b> Depth of snow-on-the-ground	<b>Wind Gust</b> The daily highest instantaneous value recorded irrespective of direction and/or duration
<b>Red Cell</b> no data available	
Red Number manual calculation	

### Wind Speed for July 2020

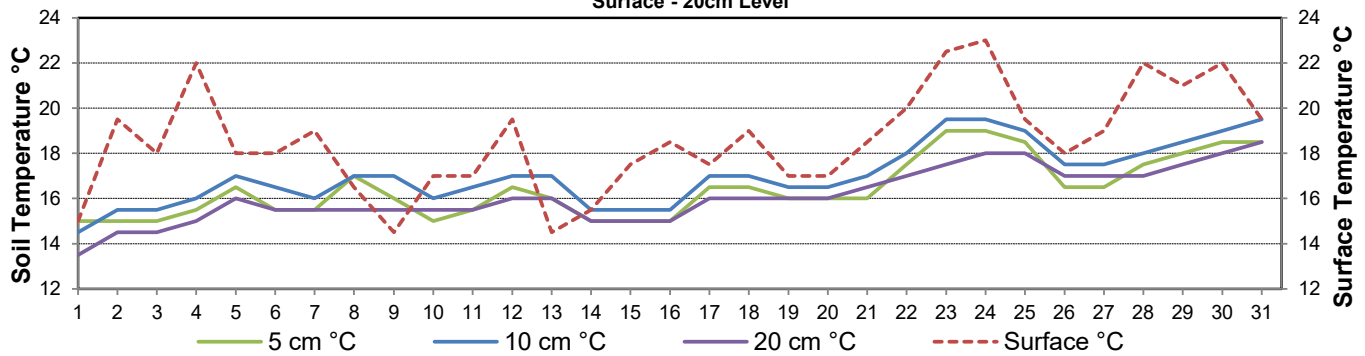


### Bright Sunshine, Global and Diffuse Radiation for July 2020



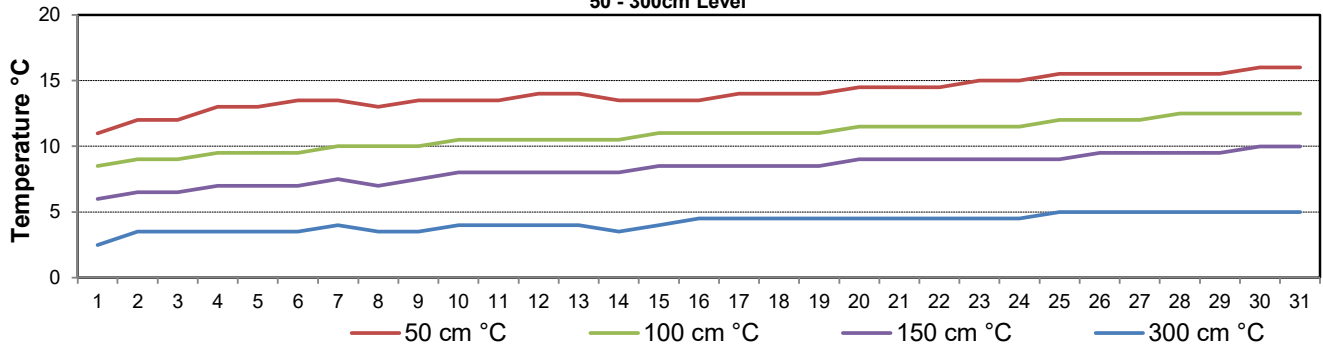
### Soil Temperatures for July 2020

Surface - 20cm Level



### Soil Temperatures for July 2020

50 - 300cm Level





SRC CLIMATE REFERENCE STATION DAILY DATA REPORT

**CONSERVATION LEARNING CENTRE**

Saskatchewan 53.03°N 105.77°W Estab. 2011

Preliminary

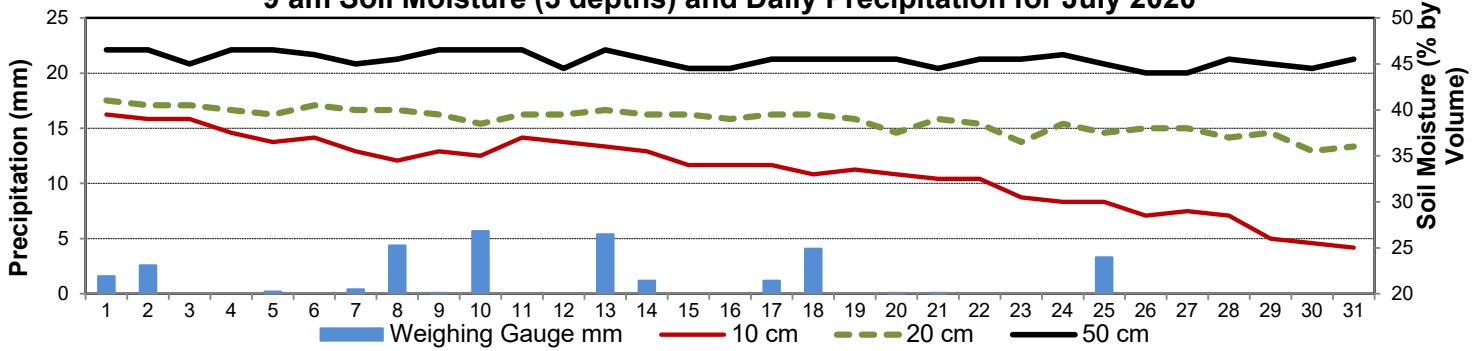
July 2020

Day	2 meter Wind Speed			Soil Moisture at 0900 hrs (rounded to the 0.5%)									
	Daily Average	Max ½ hr Avg	½ hr Extreme Max	10 cm	20 cm	50 cm							
	km/h	km/h	km/h	% by volume (soil type is Clay Loam)									
1	10.0	21.9	31.6	39.5	41.0	46.5							
2	10.0	16.6	30.0	39.0	40.5	46.5							
3	10.0	17.2	25.6	39.0	40.5	45.0							
4	7.0	13.2	25.2	37.5	40.0	46.5							
5	11.0	19.7	33.1	36.5	39.5	46.5							
6	8.0	14.7	22.9	37.0	40.5	46.0							
7	7.0	14.5	23.1	35.5	40.0	45.0							
8	11.0	17.3	27.7	34.5	40.0	45.5							
9	10.0	16.1	23.1	35.5	39.5	46.5							
10	5.0	14.0	23.9	35.0	38.5	46.5							
11	6.0	15.5	24.3	37.0	39.5	46.5							
12	10.0	16.4	25.0	36.5	39.5	44.5							
13	9.0	16.6	39.4	36.0	40.0	46.5							
14	15.0	24.2	37.7	35.5	39.5	45.5							
15	13.0	23.4	35.0	34.0	39.5	44.5							
16	7.0	12.6	18.9	34.0	39.0	44.5							
17	9.0	14.8	35.0	34.0	39.5	45.5							
18	7.0	18.1	28.3	33.0	39.5	45.5							
19	6.0	10.7	16.6	33.5	39.0	45.5							
20	4.0	15.1	24.8	33.0	37.5	45.5							
21	5.0	9.5	17.4	32.5	39.0	44.5							
22	9.0	16.0	25.2	32.5	38.5	45.5							
23	8.0	17.6	27.9	30.5	36.5	45.5							
24	7.0	13.6	21.8	30.0	38.5	46.0							
25	10.0	21.6	36.8	30.0	37.5	45.0							
26	11.0	17.9	30.2	28.5	38.0	44.0							
27	7.0	12.3	18.5	29.0	38.0	44.0							
28	5.0	8.8	15.1	28.5	37.0	45.5							
29	6.0	10.7	19.3	26.0	37.5	45.0							
30	7.0	18.6	32.1	25.5	35.5	44.5							
31	6.0	18.0	18.0	25.0	36.0	45.5							
Total													
Mean				33	39	45.5							
Extreme	15.0	24.2	39.4	39.5	41	46.5							
Date	17.5	17.5	17.5	18	18	18							

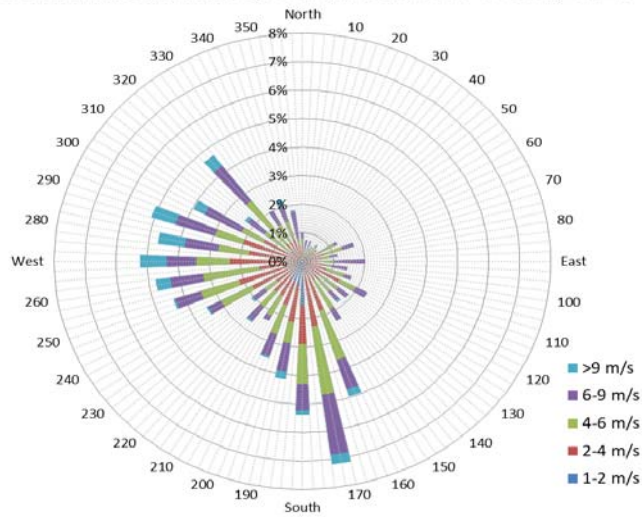
**SRC proudly recognizes the following CRS supporters:**



### 9 am Soil Moisture (3 depths) and Daily Precipitation for July 2020



### 1/2 hr Maximum Wind Speed and Direction CLC July 2020



### 10 minute Average Wind Speed and Direction CLC July 2020

