



SRC CLIMATE REFERENCE STATION DAILY DATA REPORT

CONSERVATION LEARNING CENTRE

Saskatchewan 53.03°N 105.77°W 451m asl Estab. 2011

Preliminary

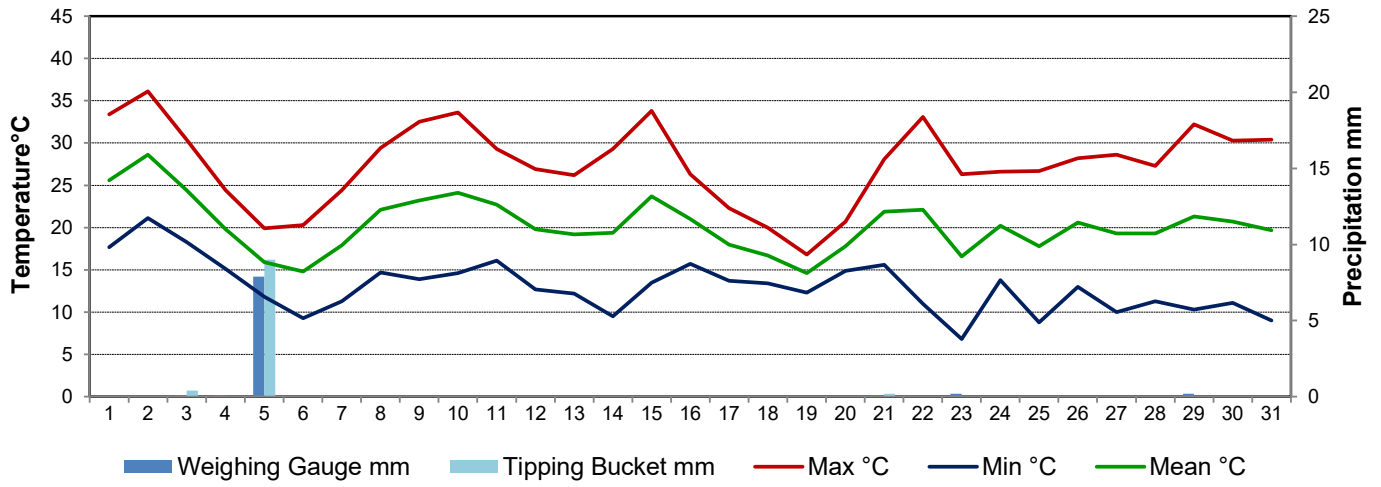
July 2021

Day	Temperature			Degree-days			Precipitation			Relative Humidity		Station Pressure <i>corrected to sea level</i>	
	Max	Min	Mean	Growing	Heating	Cooling	Weighing Gauge	Tipping Bucket	Notes	Max ½ hr Avg	Min ½ hr Avg	Max ½ hr Avg	Min ½ hr Avg
	°C	°C	°C	5°C base	18°C base	18°C base	mm	mm		%	%	mbar	mbar
1	33.4	17.7	25.6	20.6	0.0	7.6	0.0	0.0		98	34	1017	1012
2	36.1	21.1	28.6	23.6	0.0	10.6	0.0	0.0		70	34	1013	1003
3	30.4	18.3	24.4	19.4	0.0	6.4	0.1	0.4		79	34	1008	1002
4	24.4	15.1	19.8	14.8	0.0	1.8	0.1	0.0		88	51	1015	1008
5	19.9	11.8	15.9	10.9	2.1	0.0	7.9	9.0		96	60	1023	1015
6	20.3	9.3	14.8	9.8	3.2	0.0	0.0	0.0		99	63	1024	1019
7	24.4	11.3	17.9	12.9	0.1	0.0	0.0	0.0		98	52	1019	1010
8	29.4	14.7	22.1	17.1	0.0	4.1	0.0	0.0		92	46	1011	1009
9	32.5	13.9	23.2	18.2	0.0	5.2	0.0	0.0		97	36	1015	1011
10	33.6	14.6	24.1	19.1	0.0	6.1	0.0	0.0		98	32	1016	1012
11	29.3	16.1	22.7	17.7	0.0	4.7	0.0	0.0		83	46	1012	1009
12	26.9	12.7	19.8	14.8	0.0	1.8	0.0	0.0		86	37	1016	1011
13	26.2	12.2	19.2	14.2	0.0	1.2	0.0	0.0		98	40	1018	1016
14	29.3	9.5	19.4	14.4	0.0	1.4	0.0	0.0		100	41	1017	1010
15	33.8	13.5	23.7	18.7	0.0	5.7	0.0	0.0		90	31	1010	1002
16	26.3	15.7	21.0	16.0	0.0	3.0	0.0	0.0		81	39	1015	1004
17	22.3	13.7	18.0	13.0	0.0	0.0	0.0	0.0		91	67	1017	1013
18	20.0	13.4	16.7	11.7	1.3	0.0	0.0	0.0		99	73	1022	1014
19	16.8	12.3	14.6	9.6	3.4	0.0	0.0	0.0		100	85	1023	1021
20	20.7	14.9	17.8	12.8	0.2	0.0	0.0	0.0		98	79	1021	1013
21	28.1	15.6	21.9	16.9	0.0	3.9	0.1	0.2		100	62	1013	1010
22	33.1	11.0	22.1	17.1	0.0	4.1	0.0	0.0		100	19	1010	1003
23	26.3	6.8	16.6	11.6	1.4	0.0	0.2	0.0		100	28	1010	1007
24	26.6	13.8	20.2	15.2	0.0	2.2	0.0	0.0		75	30	1012	1010
25	26.7	8.8	17.8	12.8	0.2	0.0	0.0	0.0		87	37	1014	1011
26	28.2	13.0	20.6	15.6	0.0	2.6	0.0	0.0		94	34	1014	1011
27	28.6	10.0	19.3	14.3	0.0	1.3	0.0	0.0		99	43	1014	1011
28	27.3	11.3	19.3	14.3	0.0	1.3	0.0	0.0		90	34	1020	1014
29	32.2	10.3	21.3	16.3	0.0	3.3	0.2	0.0		94	26	1019	1015
30	30.3	11.1	20.7	15.7	0.0	2.7	0.0	0.0		100	28	1021	1017
31	30.4	9.0	19.7	14.7	0.0	1.7	0.0	0.0		98	37	1025	1022
Total				473.8	11.9	82.7	8.6	9.6					
Avg	27.5	13.0	20.3				159.2	Cumulative ppt					
Extreme	36.1	6.8					7.9	9.0		100	19	1025	1002
Date	2	23					5	5		14	22	31	3

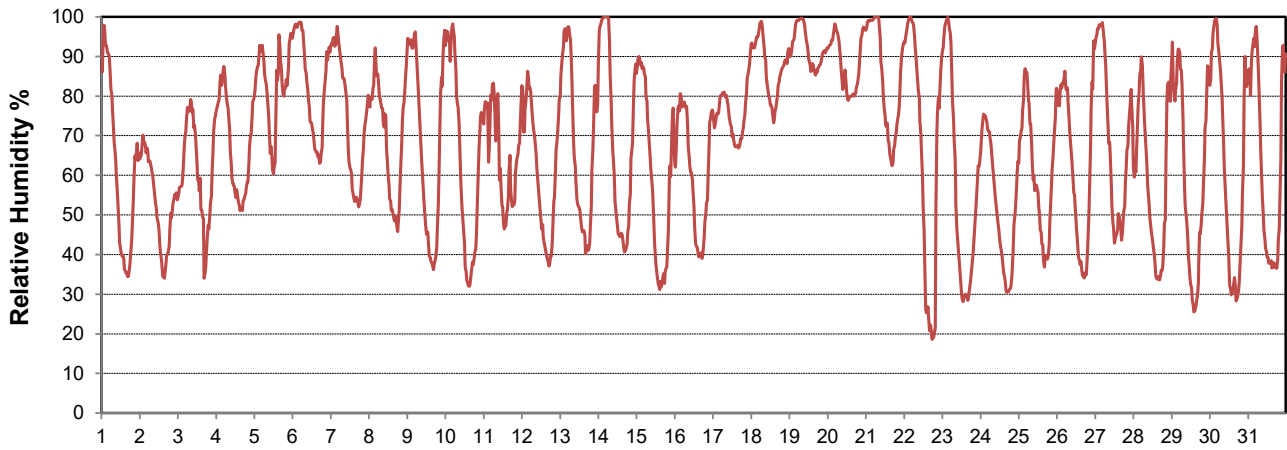
SRC proudly recognizes the following CRS supporters:



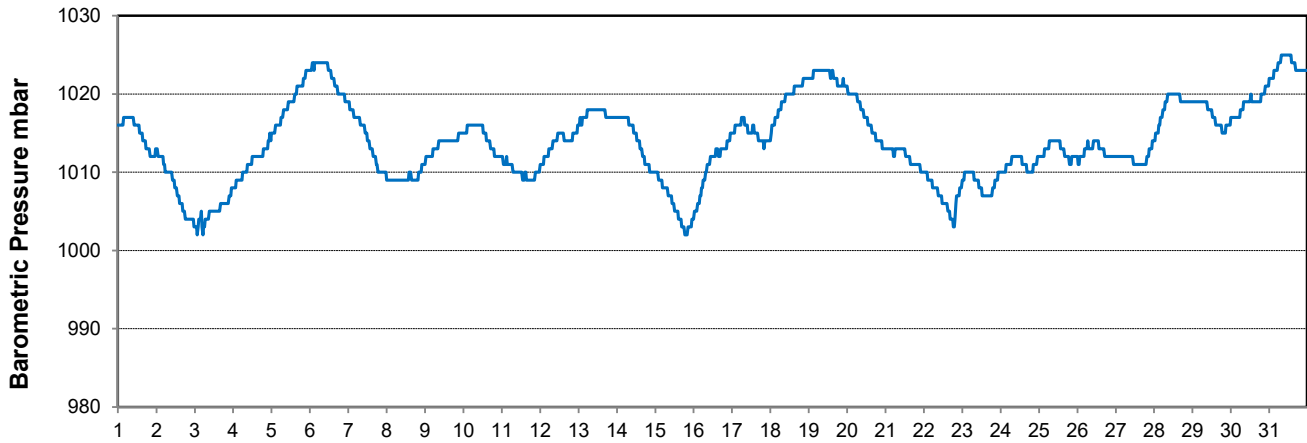
Temperature and Precipitation for July 2021



Relative Humidity for July 2021



Barometric Pressure Corrected to Sea Level for July 2021





SRC CLIMATE REFERENCE STATION DAILY DATA REPORT

CONSERVATION LEARNING CENTRE

Saskatchewan 53.03°N 105.77°W 451m asl Estab. 2011

Preliminary

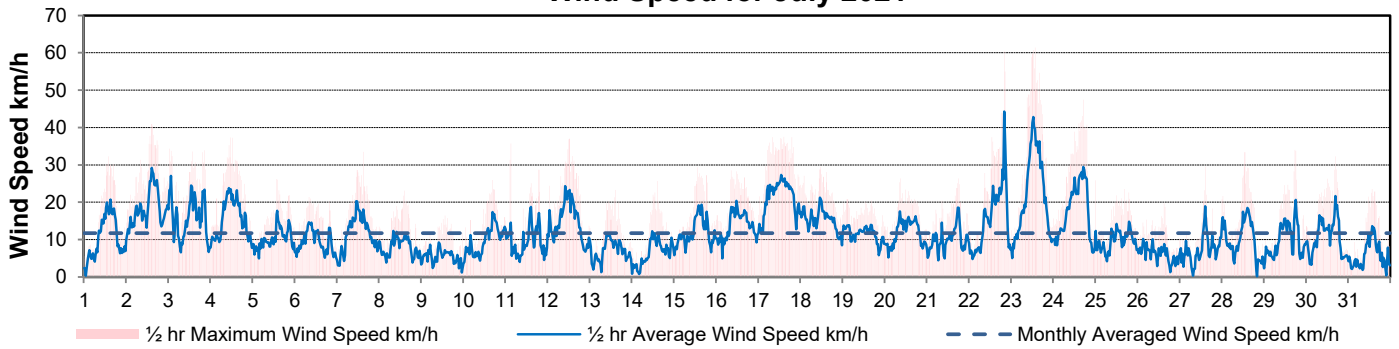
July 2021

Day	Wind Gust			Wind Speed (10 meters)	Soil Temperatures at 0900hrs								Radiation					
	Max	Direction	Time		Daily Average	Surface	5 cm	10 cm	20 cm	50 cm	100 cm	150 cm	300 cm	Bright Sunshine	Bright Sunshine Possible	% possible	Global	Diffuse
	km/h					km/h	°C	°C	°C	°C	°C	°C	°C	°C	hours	hours		MJ/m ²
1	32.3	SSE	14:25	10.3	25.0	19.0	19.5	18.0	15.0	11.0	8.5	4.5	16.0	16.8	95.1	29.0	4.5	
2	40.9	S	14:53	18.3	25.5	19.5	20.0	18.5	15.5	11.5	8.5	4.5	14.7	16.8	87.4	27.7	4.4	
3	34.4	S	0:55	15.7	23.5	20.5	21.0	19.0	16.0	11.5	8.5	4.5	9.6	16.8	57.2	22.0	9.8	
4	37.3	NW	11:39	15.4	21.0	19.0	19.5	18.5	16.0	12.0	9.0	5.0	14.2	16.8	84.7	25.8	7.9	
5	26.2	ENE	13:58	10.2	18.0	18.0	19.0	18.0	16.0	12.0	9.0	5.0	0.3	16.7	1.8	14.8	10.7	
6	21.4	ENE	8:17	9.5	13.5	16.5	17.5	17.0	16.0	12.0	9.0	5.0	6.0	16.7	35.9	18.7	13.6	
7	33.5	ESE	15:00	11.6	15.5	16.5	17.5	16.5	15.5	12.5	9.5	5.0	9.9	16.7	59.3	22.2	10.7	
8	23.1	S	14:44	7.9	20.0	17.5	18.0	17.0	15.5	12.5	9.5	5.0	12.6	16.7	75.6	25.6	6.6	
9	16.5	NW	13:55	5.5	22.5	18.0	18.5	17.5	15.5	12.5	9.5	5.0	15.3	16.6	92.0	27.0	6.2	
10	25.9	S	16:44	9.6	23.0	18.5	19.5	18.0	16.0	12.5	9.5	5.0	14.8	16.6	89.2	25.1	8.3	
11	35.7	WNW	3:10	9.5	21.5	19.0	19.5	18.5	16.0	12.5	10.0	5.0	7.6	16.6	45.9	16.9	8.3	
12	37.0	NW	12:37	14.8	19.5	17.5	18.5	18.0	16.0	12.5	10.0	5.5	15.4	16.5	93.2	26.1	8.2	
13	23.3	N	14:35	7.0	20.0	17.5	18.5	17.5	16.0	13.0	10.0	5.5	12.3	16.5	74.6	23.2	9.5	
14	25.7	SSE	14:31	6.3	20.0	17.0	18.0	17.0	16.0	13.0	10.0	5.5	13.3	16.5	80.9	25.1	9.0	
15	29.4	S	13:50	12.1	22.0	17.5	18.5	17.5	16.0	13.0	10.0	5.5	13.9	16.4	84.7	24.8	8.5	
16	28.6	N	8:57	13.7	20.0	18.5	19.5	18.0	16.0	13.0	10.5	5.5	12.3	16.4	75.1	22.6	10.0	
17	37.5	ENE	14:57	21.4	15.0	17.5	18.5	17.5	16.0	13.0	10.5	5.5	9.4	16.3	57.6	20.7	10.7	
18	29.4	NNW	11:43	15.5	15.5	17.5	18.5	17.5	16.0	13.0	10.5	5.5	2.7	16.3	16.6	13.9	11.1	
19	20.8	ENE	3:00	11.5	13.0	17.0	18.0	17.0	16.0	13.0	10.5	5.5	0.0	16.3	0.0	6.6	5.9	
20	26.3	E	9:09	11.9	18.0	17.0	17.5	16.5	15.5	13.0	10.5	5.5	1.0	16.2	6.2	10.9	9.6	
21	26.4	ESE	18:27	10.0	18.0	17.0	18.0	16.5	15.5	13.0	10.5	5.5	8.9	16.2	55.1	19.6	10.2	
22	60.4	W	20:01	15.4	23.5	18.5	19.0	17.5	15.5	13.0	10.5	6.0	13.5	16.1	83.8	24.1	7.3	
23	61.4	W	13:36	22.1	17.0	16.5	17.5	17.5	15.5	13.0	11.0	6.0	14.7	16.1	91.5	26.7	5.5	
24	47.4	NW	17:04	17.6	20.0	16.5	17.5	17.0	16.0	13.0	11.0	6.0	14.9	16.0	93.1	26.8	4.9	
25	25.8	NNE	0:02	9.5	20.0	16.5	17.0	17.0	16.0	13.5	11.0	6.0	10.9	16.0	68.3	19.8	10.0	
26	19.7	NW	15:08	6.1	19.5	17.0	17.5	17.0	15.5	13.5	11.0	6.0	12.1	15.9	76.1	22.2	9.0	
27	29.6	NE	14:32	7.1	19.5	16.5	17.5	17.0	15.5	13.5	11.0	6.0	12.0	15.9	75.7	19.6	10.3	
28	33.4	NNW	13:00	9.8	20.5	17.0	17.5	17.0	16.0	13.5	11.0	6.0	15.0	15.8	94.9	26.3	4.0	
29	33.9	NNW	17:55	9.8	22.0	16.5	17.5	17.0	16.0	13.5	11.0	6.5	10.3	15.8	65.4	20.6	9.5	
30	32.3	NNW	16:39	10.5	22.0	17.0	18.0	17.5	16.0	13.5	11.0	6.5	14.4	15.7	91.8	25.8	4.9	
31	23.6	NNE	13:37	5.9	20.0	17.0	17.5	17.5	16.0	13.5	11.0	6.5	14.3	15.6	91.4	24.5	4.8	
Total													342.3	506.1	67.6	684.7	253.9	
Mean					19.8	17.6	18.4	17.5	15.8	12.8	10.1	5.5						
Extreme	61.4	W	13:36															
Date	23																	

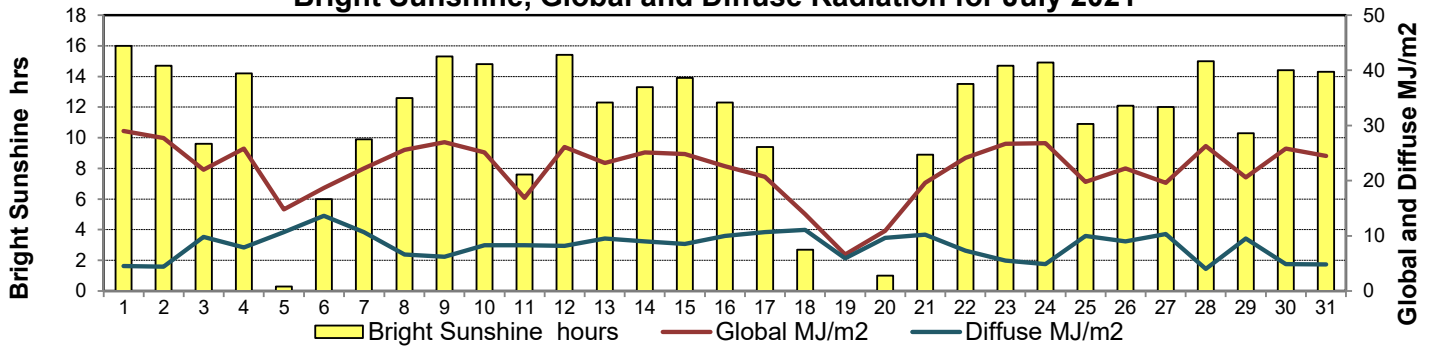
GLOSSARY OF TERMS

Degree-days	Radiation
Tm Mean Temperature	Bright Sunshine is the unobstructed direct radiation from the sun, as opposed to the shading of a location by clouds or by other atmospheric obstructions.
Growing (Tm-5°C); if Tm ≤ 5°C then GDD = 0	
Heating (18°C-Tm); if Tm ≥ 18°C then HDD = 0	
Cooling (Tm-18°C); if Tm ≤ 18°C then CDD = 0	Diffuse is radiation reaching the earth's surface after having been scattered from the direct solar beam
T Trace of Precipitation	Global is the sum of the direct solar and diffuse radiation
SOG Depth of snow-on-the-ground	Relative Humidity The ratio of the air's water vapour content of its water vapour capacity which changes with temperature.
Red Cell no data available	Air Pressure The force exerted by the weight of a column of air above a given point
Red Number manual calculation	Wind Gust The daily highest instantaneous value recorded irrespective of direction and/or duration

Wind Speed for July 2021

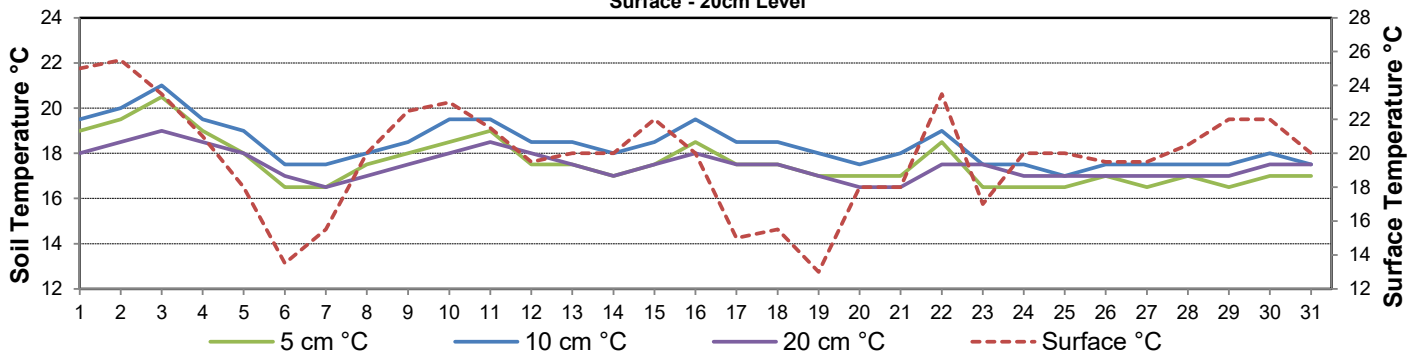


Bright Sunshine, Global and Diffuse Radiation for July 2021



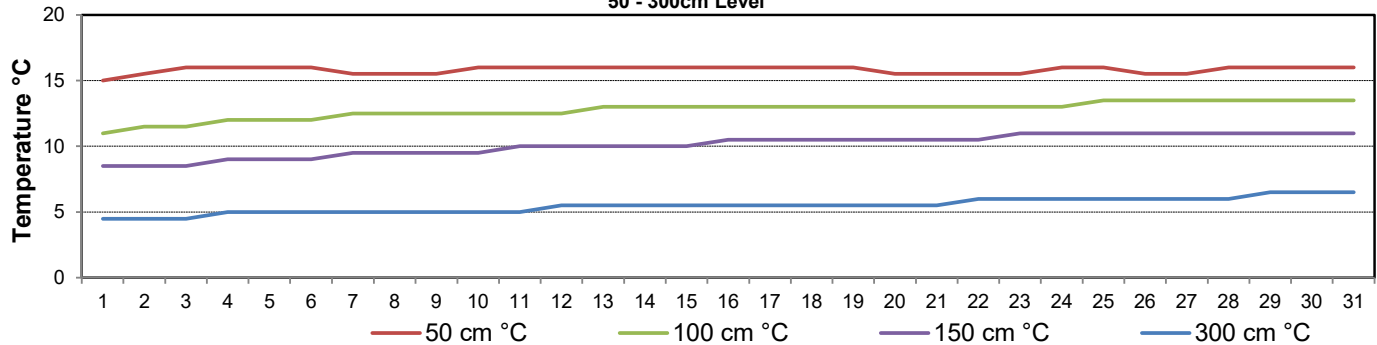
Soil Temperatures for July 2021

Surface - 20cm Level



Soil Temperatures for July 2021

50 - 300cm Level





SRC CLIMATE REFERENCE STATION DAILY DATA REPORT

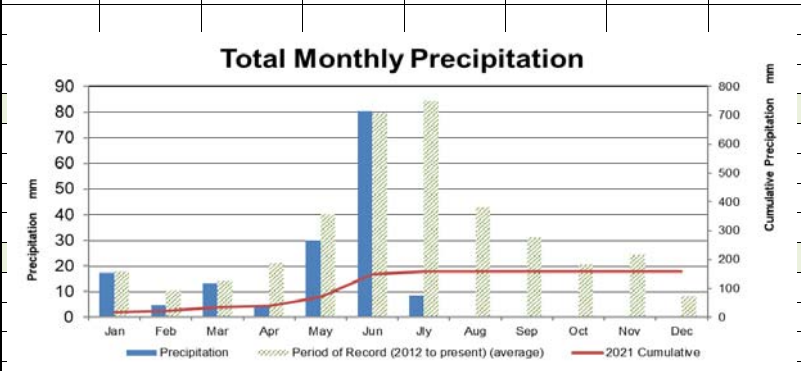
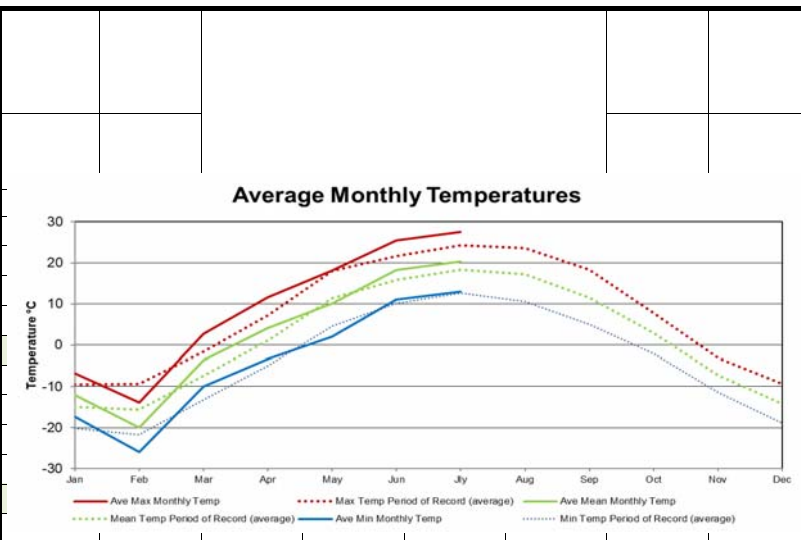
CONSERVATION LEARNING CENTRE

Saskatchewan 53.03°N 105.77°W 451m asl Estab. 2011

Preliminary

July 2021

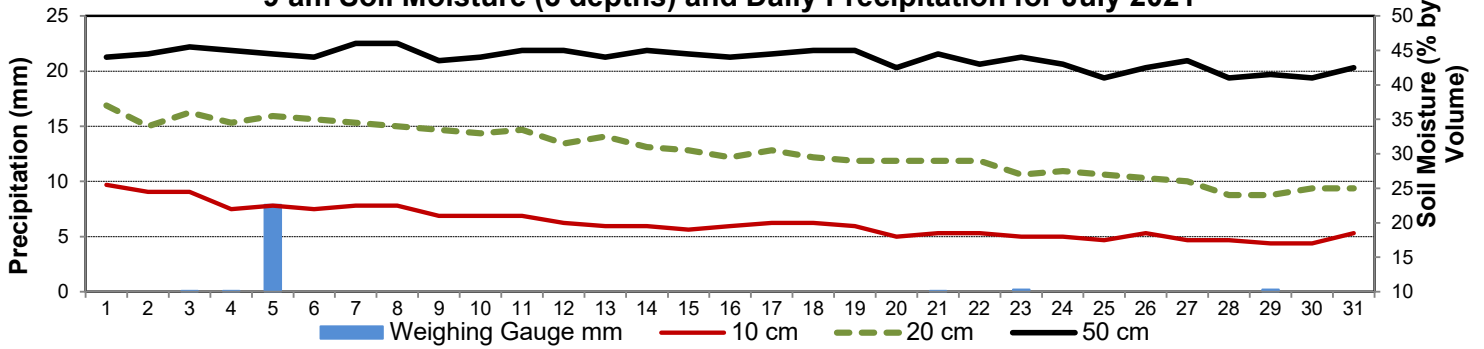
Day	2 meter Wind Speed			Soil Moisture at 0900 hrs (rounded to the 0.5%)		
	Daily Average	Max ½ hr Avg	½ hr Extreme Max	10 cm	20 cm	50 cm
	km/h	km/h	km/h	% by volume (soil type is Clay Loam)		
1	6.0	14.2	23.3	25.5	37.0	44.0
2	12.0	20.7	32.1	24.5	34.0	44.5
3	11.0	18.4	26.0	24.5	36.0	45.5
4	11.0	17.2	27.3	22.0	34.5	45.0
5	8.0	13.6	19.9	22.5	35.5	44.5
6	7.0	11.6	17.7	22.0	35.0	44.0
7	8.0	14.3	22.5	22.5	34.5	46.0
8	5.0	9.0	16.4	22.5	34.0	46.0
9	4.0	7.5	12.9	21.0	33.5	43.5
10	6.0	11.6	17.0	21.0	33.0	44.0
11	6.0	12.5	23.1	21.0	33.5	45.0
12	10.0	16.1	27.3	20.0	31.5	45.0
13	5.0	9.1	16.4	19.5	32.5	44.0
14	4.0	9.4	17.0	19.5	31.0	45.0
15	7.0	12.9	21.2	19.0	30.5	44.5
16	9.0	14.9	22.0	19.5	29.5	44.0
17	16.0	20.0	29.3	20.0	30.5	44.5
18	11.0	15.2	22.4	20.0	29.5	45.0
19	9.0	10.8	16.8	19.5	29.0	45.0
20	9.0	13.0	19.7	18.0	29.0	42.5
21	7.0	13.3	19.7	18.5	29.0	44.5
22	10.0	28.9	43.1	18.5	29.0	43.0
23	15.0	29.4	43.1	18.0	27.0	44.0
24	12.0	19.4	31.6	18.0	27.0	44.0
25	6.0	10.6	17.2	17.5	27.0	41.0
26	4.0	8.0	14.1	18.5	26.5	42.5
27	5.0	12.9	20.0	17.5	26.0	43.5
28	7.0	13.0	21.8	17.5	24.0	41.0
29	6.0	14.1	23.5	17.0	24.0	41.5
30	7.0	15.1	23.9	17.0	25.0	41.0
31	4.0	20.0	18.0	18.5	25.0	42.5
Total						
Mean				20	30	43.8
Extreme	16.0	29.4	43.1	25.5	37	46
Date	21.5	21	23.5	24.5	24.5	21



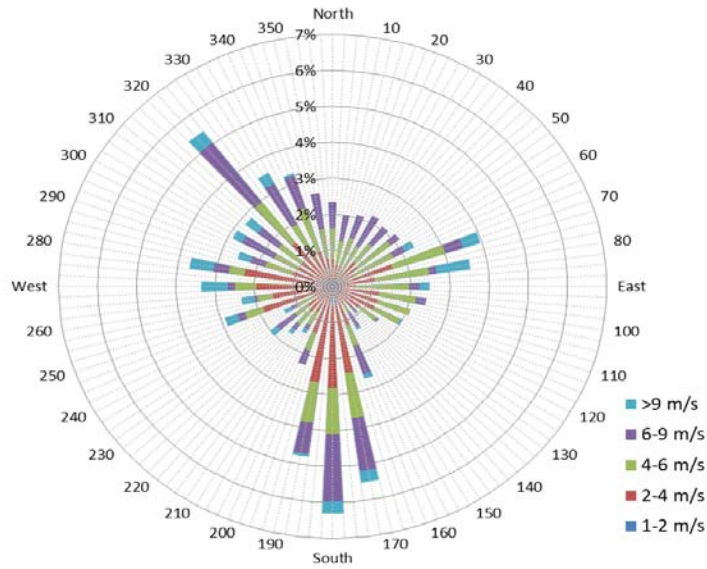
SRC proudly recognizes the following CRS supporters:



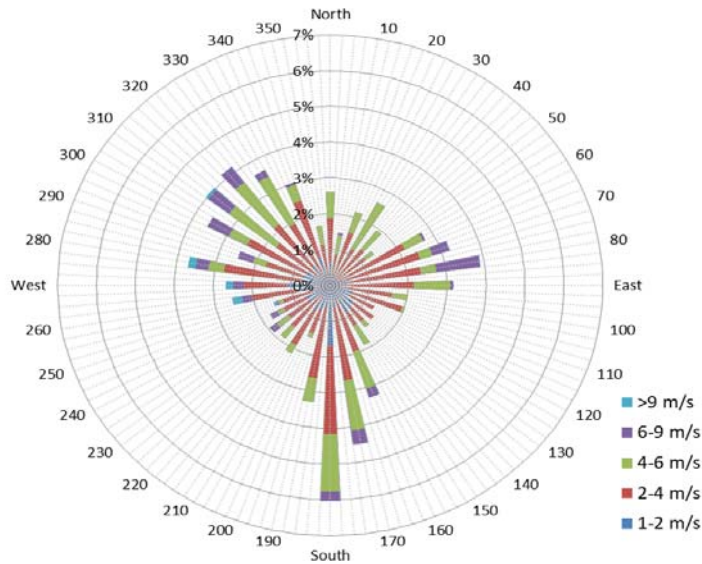
9 am Soil Moisture (3 depths) and Daily Precipitation for July 2021



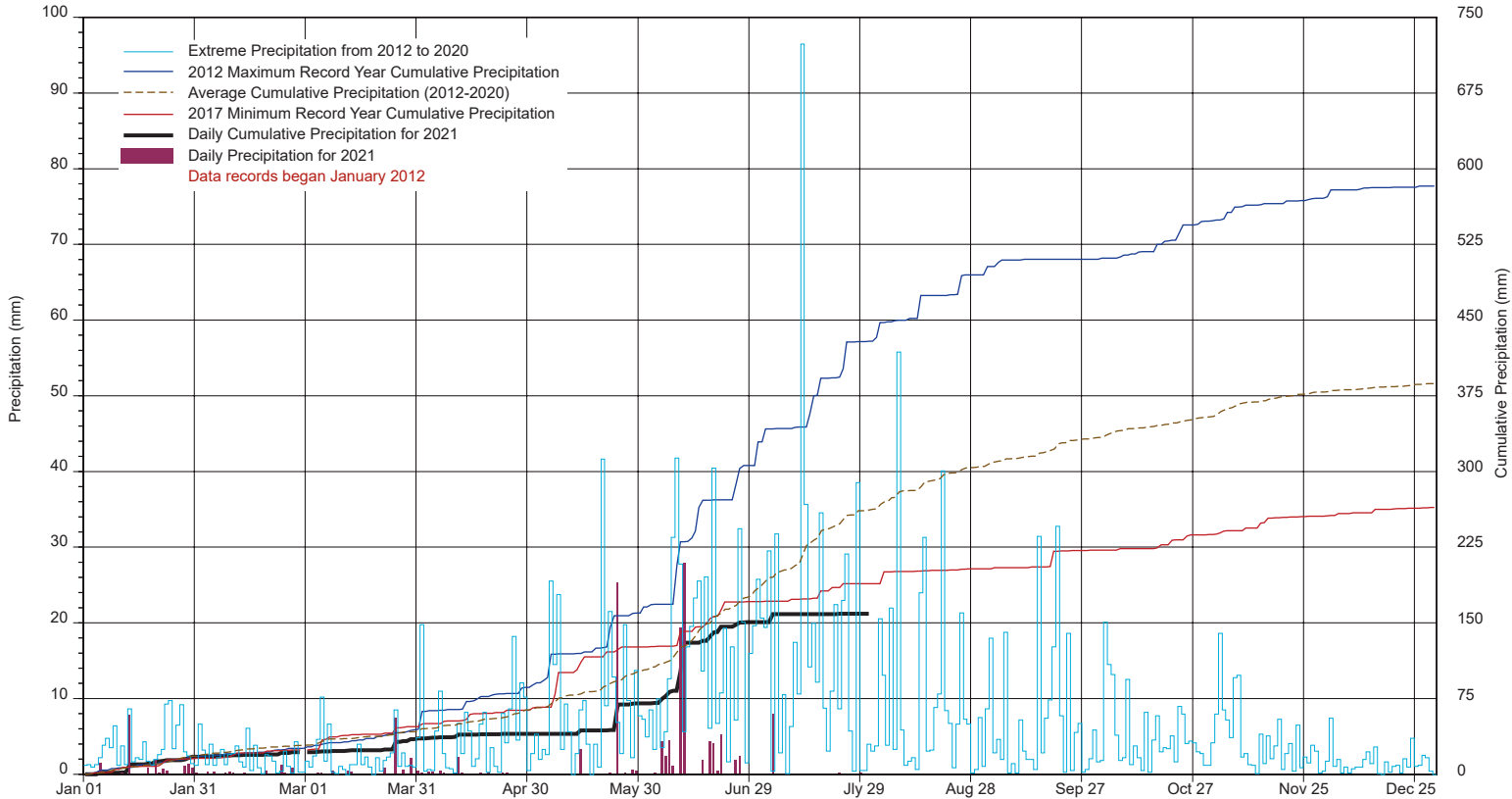
1/2 hr Maximum Wind Speed and Direction CLC July 2021



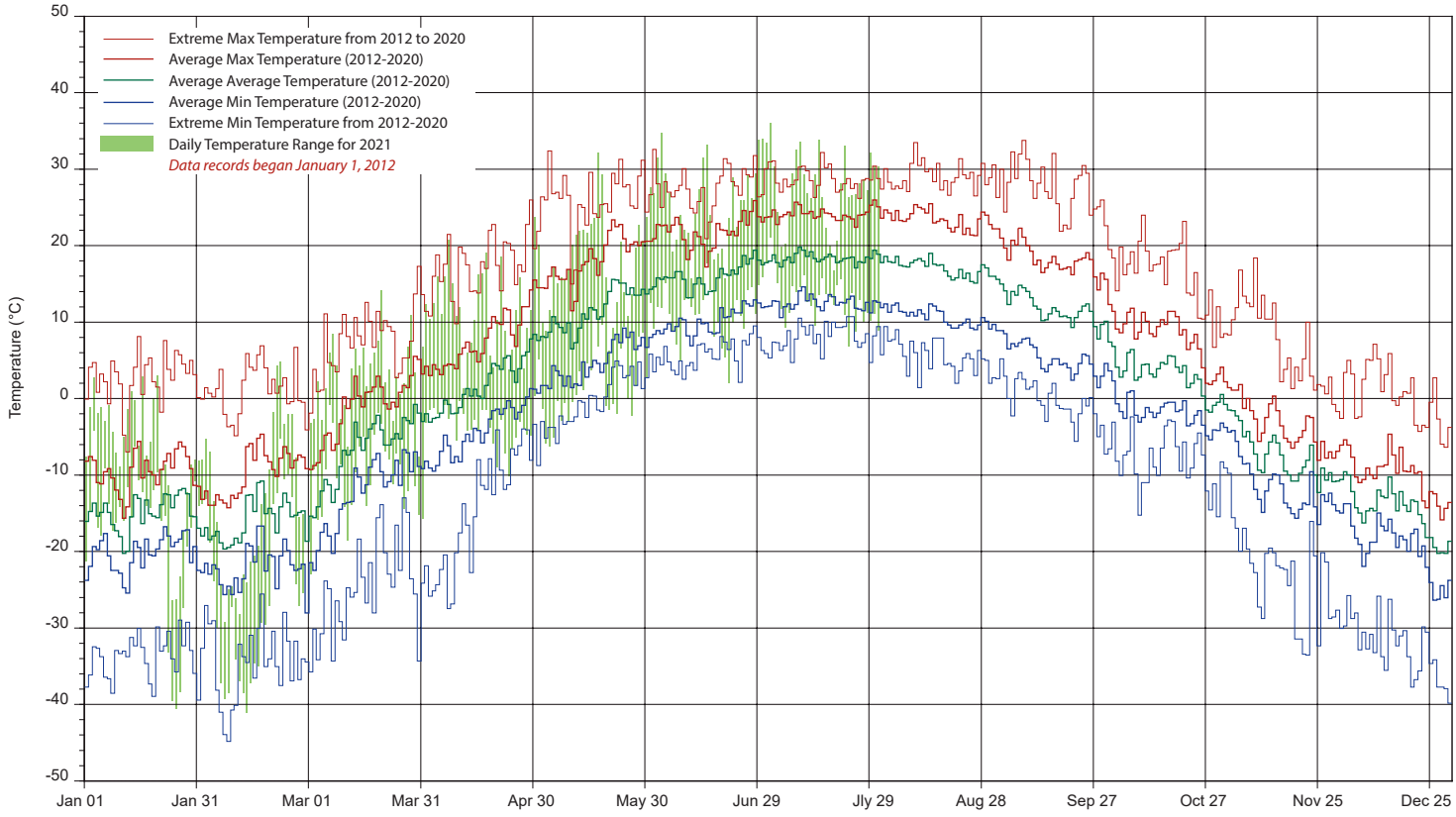
10 minute Average Wind Speed and Direction CLC July 2021



SRC's CLIMATE REFERENCE STATION at the Conservation Learning Centre 2021 PRECIPITATION AND AVERAGE



2021 TEMPERATURES AND AVERAGES



SRC proudly recongnizes the following CRS supporters:

