



SRC CLIMATE REFERENCE STATION DAILY DATA REPORT

CONSERVATION LEARNING CENTRE

Saskatchewan 53.03°N 105.77°W 451m asl Estab. 2011

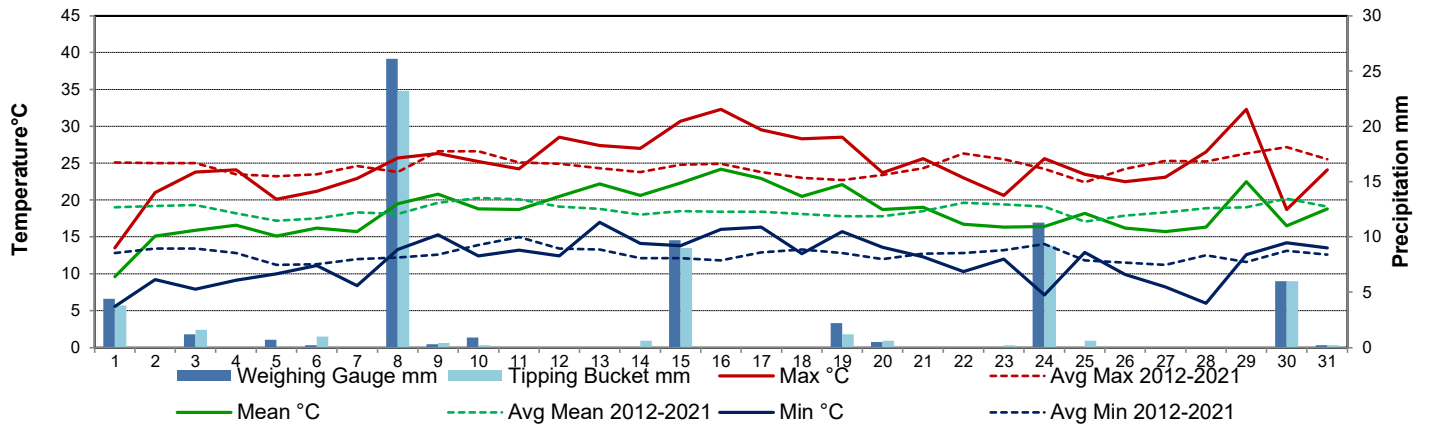
Preliminary July 2022

Day	Temperature						Degree-days			Precipitation			Relative Humidity		Station Pressure <i>corrected to sea level</i>	
	Max	Avg Max	Min	Avg Min	Mean	Avg Mean	Growing	Heating	Cooling	Weighing Gauge	Tipping Bucket	Notes	Max ½ hr Avg	Min ½ hr Avg	Max ½ hr Avg	Min ½ hr Avg
	°C	2012-2021	°C	2012-2021	°C	2012-2021	5°C base	18°C base	18°C base	mm	mm		%	%	mbar	mbar
1	13.5	25.1	5.6	12.8	9.6	19.0	4.6	8.4	0.0	4.4	3.8		99	68	1018	1014
2	21.0	25.0	9.2	13.4	15.1	19.2	10.1	2.9	0.0	0.0	0.0		100	49	1019	1015
3	23.8	25.0	7.9	13.4	15.9	19.3	10.9	2.1	0.0	1.2	1.6		100	41	1015	1013
4	24.1	23.5	9.1	12.8	16.6	18.2	11.6	1.4	0.0	0.0	0.0		100	51	1018	1014
5	20.1	23.2	10.0	11.2	15.1	17.2	10.1	2.9	0.0	0.7	0.0		96	61	1018	1016
6	21.2	23.5	11.1	11.3	16.2	17.5	11.2	1.8	0.0	0.2	1.0		100	58	1018	1015
7	22.9	24.6	8.4	12.0	15.7	18.3	10.7	2.3	0.0	0.0	0.0		100	50	1020	1018
8	25.7	23.8	13.3	12.2	19.5	18.1	14.5	0.0	1.5	26.1	23.2		100	80	1017	1010
9	26.3	26.6	15.3	12.6	20.8	19.6	15.8	0.0	2.8	0.3	0.4		100	58	1013	1010
10	25.2	26.6	12.4	13.9	18.8	20.3	13.8	0.0	0.8	0.9	0.2		99	51	1012	1010
11	24.2	25.1	13.2	15.0	18.7	20.1	13.7	0.0	0.7	0.0	0.0		91	50	1013	1012
12	28.5	24.9	12.4	13.4	20.5	19.1	15.5	0.0	2.5	0.0	0.0		92	43	1014	1012
13	27.4	24.3	17.0	13.3	22.2	18.8	17.2	0.0	4.2	0.0	0.0		86	57	1012	1004
14	27.0	23.8	14.1	12.1	20.6	18.0	15.6	0.0	2.6	0.0	0.6		94	41	1014	1007
15	30.7	24.8	13.8	12.1	22.3	18.5	17.3	0.0	4.3	9.7	9.0		99	66	1015	1010
16	32.3	24.9	16.0	11.8	24.2	18.4	19.2	0.0	6.2	0.0	0.0		100	62	1010	1005
17	29.5	23.8	16.3	12.9	22.9	18.4	17.9	0.0	4.9	0.0	0.0		97	49	1011	1007
18	28.3	23.0	12.7	13.3	20.5	18.1	15.5	0.0	2.5	0.0	0.0		99	47	1009	1003
19	28.5	22.7	15.7	12.8	22.1	17.8	17.1	0.0	4.1	2.2	1.2		97	52	1006	1003
20	23.7	23.4	13.6	12.0	18.7	17.8	13.7	0.0	0.7	0.5	0.6		89	48	1009	1006
21	25.6	24.3	12.3	12.7	19.0	18.5	14.0	0.0	1.0	0.0	0.0		88	45	1007	1006
22	23.0	26.3	10.3	12.8	16.7	19.6	11.7	1.3	0.0	0.0	0.0		100	49	1012	1006
23	20.6	25.5	12.0	13.2	16.3	19.4	11.3	1.7	0.0	0.0	0.2		97	62	1017	1013
24	25.6	24.2	7.1	14.0	16.4	19.1	11.4	1.6	0.0	11.3	9.2		100	51	1018	1012
25	23.5	22.4	12.9	11.8	18.2	17.1	13.2	0.0	0.2	0.0	0.6		99	59	1013	1012
26	22.5	24.2	9.9	11.5	16.2	17.9	11.2	1.8	0.0	0.0	0.0		98	45	1013	1011
27	23.1	25.3	8.2	11.2	15.7	18.3	10.7	2.3	0.0	0.0	0.0		100	46	1018	1013
28	26.5	25.2	6.0	12.5	16.3	18.9	11.3	1.7	0.0	0.0	0.0		100	45	1019	1013
29	32.3	26.3	12.6	11.6	22.5	19.0	17.5	0.0	4.5	0.0	0.0		96	35	1013	1009
30	18.7	27.2	14.2	13.1	16.5	20.2	11.5	1.5	0.0	6.0	6.0		100	89	1015	1010
31	24.1	25.5	13.5	12.6	18.8	19.1	13.8	0.0	0.8	0.2	0.2		100	63	1015	1011
Total							413.6	33.7	44.3	63.7	57.8					
Avg	24.8	24.6	11.8	12.6	18.3	18.7	Monthly 2012 - 2021 Average			75.0	2012-2021 Average					
Extreme	32.3	36.1	5.6	4.7			423.4	23	43.3	207.5	2022 Cumulative ppt		100	35	1020	1003
Date	16	2021	1	2015						252.3	Cumulative Average		2	29	7	18

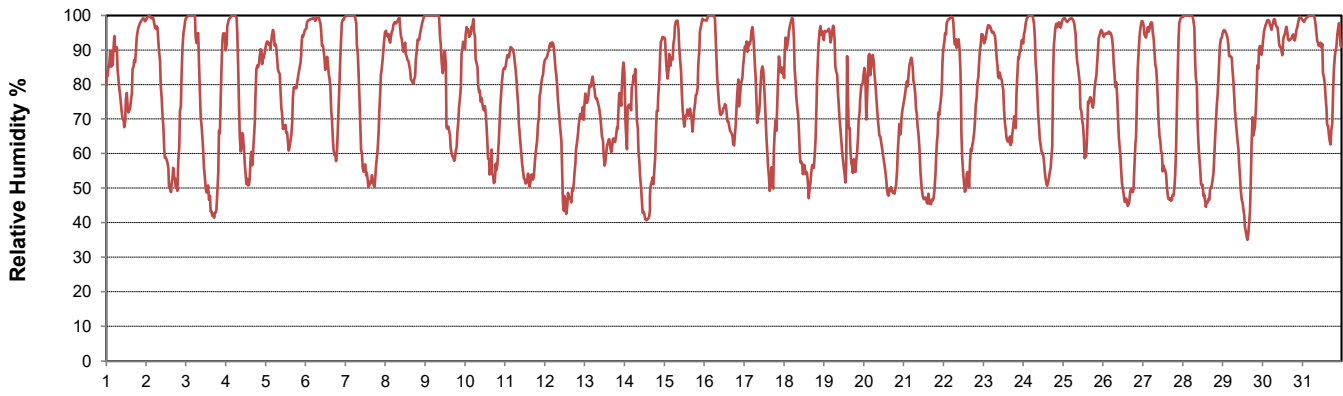
SRC proudly recognizes the following CRS supporters:



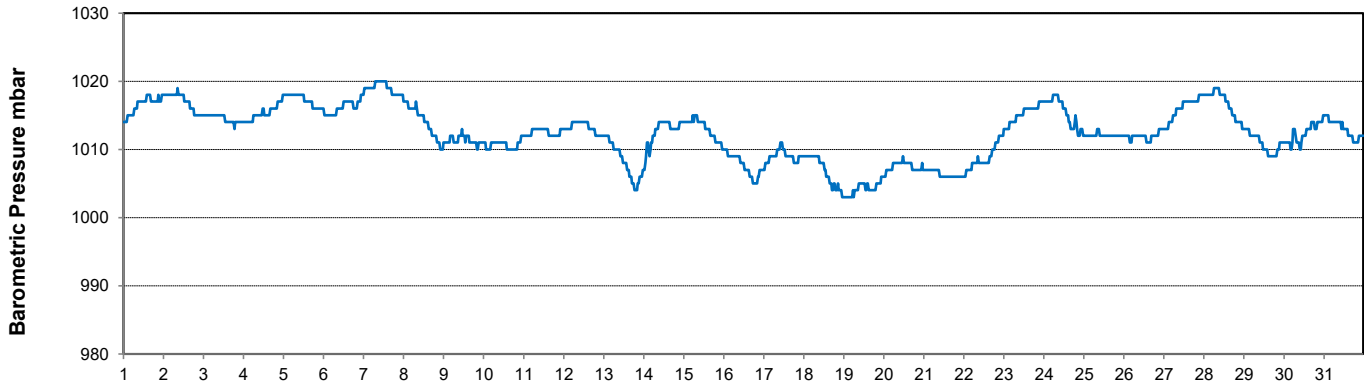
Temperature and Precipitation for July 2022



Relative Humidity for July 2022



Barometric Pressure Corrected to Sea Level for July 2022





SRC CLIMATE REFERENCE STATION DAILY DATA REPORT

CONSERVATION LEARNING CENTRE

Saskatchewan 53.03°N 105.77°W 451m asl Estab. 2011

Preliminary

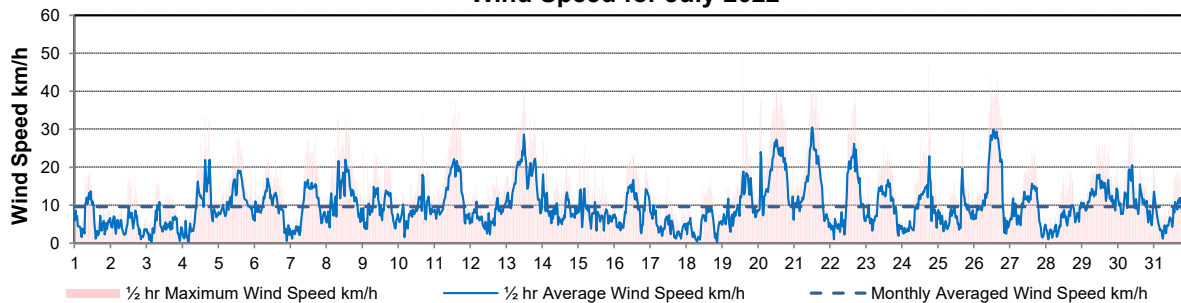
July 2022

Day	Wind Gust			Wind Speed (10 meters) Daily Average	Soil Temperatures at 0900hrs								Radiation				
	Max	Direction	Time		Surface	5 cm	10 cm	20 cm	50 cm	100 cm	150 cm	300 cm	Bright Sunshine	Bright Sunshine Possible	% possible	Global	Diffuse
	km/h				°C	°C	°C	°C	°C	°C	°C	°C	hours	hours		MJ/m ²	MJ/m ²
1	19.0	ENE	10:51	6.0	11.5	13.0	14.5	14.0	13.0	10.5	8.0	4.5	0.0	16.8	0.0	6.3	5.6
2	18.2	SSW	16:21	4.7	14.0	13.0	14.0	13.0	12.5	10.5	8.0	4.5	9.6	16.8	57.1	22.7	11.2
3	15.8	SSE	7:23	4.6	15.0	14.0	15.0	14.0	12.5	10.5	8.0	4.5	12.0	16.8	71.4	25.5	5.3
4	33.4	ENE	15:09	9.2	18.5	14.5	15.5	14.5	13.0	10.5	8.0	4.5	9.0	16.8	53.6	24.0	9.5
5	27.6	ENE	14:07	11.5	16.5	15.0	16.0	15.0	13.0	10.5	8.5	4.5	3.4	16.8	20.3	12.6	10.3
6	22.5	NE	9:26	9.5	13.5	15.0	16.0	14.5	13.0	10.5	8.5	4.5	4.7	16.7	28.1	14.1	7.5
7	27.7	SSE	16:46	9.0	17.5	14.0	15.0	14.0	13.0	10.5	8.5	5.0	14.6	16.7	87.4	28.0	4.9
8	33.3	NNW	7:49	12.7	16.0	15.5	16.5	15.0	13.0	10.5	8.5	4.5	2.8	16.7	16.8	10.7	7.7
9	24.3	WNW	0:32	9.2	19.5	16.5	17.0	15.0	13.5	10.5	8.5	4.5	9.5	16.6	57.1	20.4	6.1
10	34.1	N	16:06	8.5	19.5	16.5	17.5	16.0	14.0	11.0	8.5	5.0	10.9	16.6	65.6	21.2	8.7
11	37.5	WNW	14:21	13.2	20.0	16.0	17.5	16.0	14.0	11.0	8.5	5.0	12.8	16.6	77.2	25.2	6.0
12	17.9	SSE	17:59	7.0	19.5	16.0	17.0	16.0	14.5	11.0	9.0	5.0	16.0	16.5	96.7	28.4	3.1
13	41.1	SSE	11:54	16.8	22.0	17.5	18.5	16.5	14.5	11.5	9.0	5.0	9.0	16.5	54.5	20.0	7.9
14	27.2	NW	0:27	8.9	19.5	17.5	18.5	17.0	15.0	11.5	9.0	5.0	13.6	16.5	82.6	27.5	3.9
15	25.5	NE	4:08	7.9	18.0	17.0	18.5	17.0	15.0	11.5	9.0	5.0	10.8	16.4	65.8	22.6	7.3
16	23.6	S	12:27	9.3	22.5	18.5	19.5	18.0	15.5	12.0	9.0	5.0	14.3	16.4	87.3	27.2	3.6
17	17.8	SE	11:35	4.5	23.5	19.5	20.5	18.5	16.0	12.0	9.5	5.5	11.8	16.3	72.2	19.5	7.1
18	17.2	ESE	16:04	4.6	21.0	18.0	19.5	18.0	16.0	12.0	9.5	5.5	13.6	16.3	83.4	26.4	5.4
19	48.7	W	13:55	10.2	22.0	19.0	20.0	18.5	16.0	12.5	9.5	5.5	12.4	16.3	76.3	24.9	4.8
20	41.0	WNW	10:35	17.3	17.5	18.0	19.5	18.0	16.5	12.5	9.5	5.5	14.2	16.2	87.6	26.3	6.0
21	41.5	NNW	12:46	15.6	19.0	17.0	18.5	17.5	16.0	12.5	10.0	5.5	13.3	16.2	82.3	25.6	5.5
22	40.8	N	16:05	10.9	15.0	16.5	18.0	17.0	16.0	13.0	10.0	5.5	8.7	16.1	54.0	21.7	5.7
23	25.4	N	11:52	9.5	14.5	16.5	18.0	17.0	16.0	13.0	10.0	5.5	5.8	16.1	36.1	17.4	10.9
24	46.8	NNW	17:56	9.0	17.0	15.5	17.0	16.5	15.5	13.0	10.5	5.5	11.6	16.0	72.4	23.4	5.7
25	29.5	NW	16:11	7.4	17.5	17.0	18.0	16.5	15.5	13.0	10.5	5.5	4.0	16.0	25.0	13.4	9.6
26	43.9	NW	11:04	15.0	17.0	16.0	17.0	16.5	15.5	13.0	10.5	6.0	14.5	15.9	91.1	26.9	5.4
27	24.5	N	14:55	8.8	16.5	15.0	16.5	16.0	15.5	13.0	10.5	6.0	12.6	15.9	79.4	25.4	5.3
28	19.1	S	15:35	5.9	16.5	14.5	16.0	15.5	15.5	13.0	10.5	6.0	14.5	15.8	91.7	26.4	3.5
29	26.3	WSW	11:48	12.8	20.0	16.0	17.0	16.0	15.0	13.0	10.5	6.0	13.5	15.8	85.7	24.4	5.3
30	31.8	E	9:25	11.3	17.5	17.5	18.5	17.0	15.5	13.0	10.5	6.0	0.2	15.7	1.3	6.6	5.9
31	26.3	NNE	23:06	6.4	15.0	16.5	17.5	16.5	15.0	13.0	10.5	6.0	5.1	15.7	32.6	15.0	7.3
Total													308.8	506.4	61.0	659.7	202.0
Mean					17.8	16.2	17.4	16.1	14.7	11.8	9.3	5.2					
Extreme	48.7	W	13:55														
Date	19																

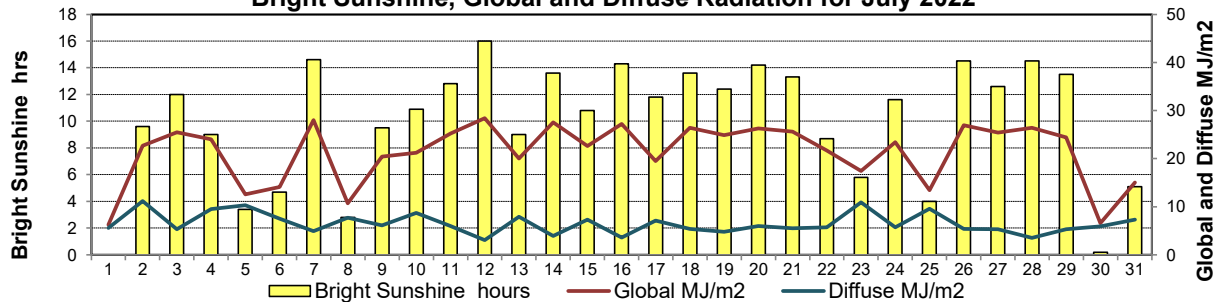
GLOSSARY OF TERMS

Degree-days	Radiation
T _m Mean Temperature	Bright Sunsh is the unobstructed direct radiation from the sun, as opposed to the shading of a location by clouds or by other atmospheric obstructions.
Growing (T _m -5°C); if T _m ≤ 5°C then GDD = 0	Diffus is radiation reaching the earth's surface after having been scatte4red from the direct solar beam
Heating (18°C-T _m); if T _m ≥ 18°C then HDD = 0	Global is the sum of the direct solar and diffuse radiation
Cooling (T _m -18°C); if T _m ≤ 18°C then CDD = 0	Relative Humidity The ratio of the air's water vapour content of its water vapour capacity which changes with temperature.
T Trace of Precipitation	Air Pressure The force exerted by the weight of a column of air above a given point
SOG Depth of snow-on-the-ground	Wind Gust The daily highest instantaneous value recorded irrespective of direction and/or duration
Red Cell no data available	
Red Number manual calculation	

Wind Speed for July 2022

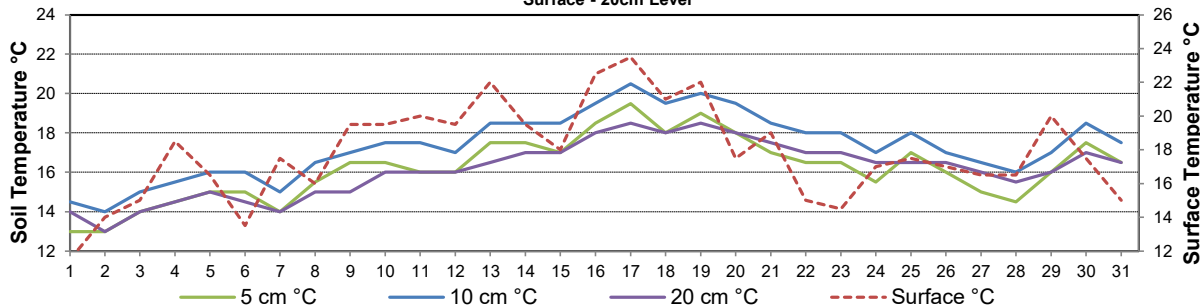


Bright Sunshine, Global and Diffuse Radiation for July 2022



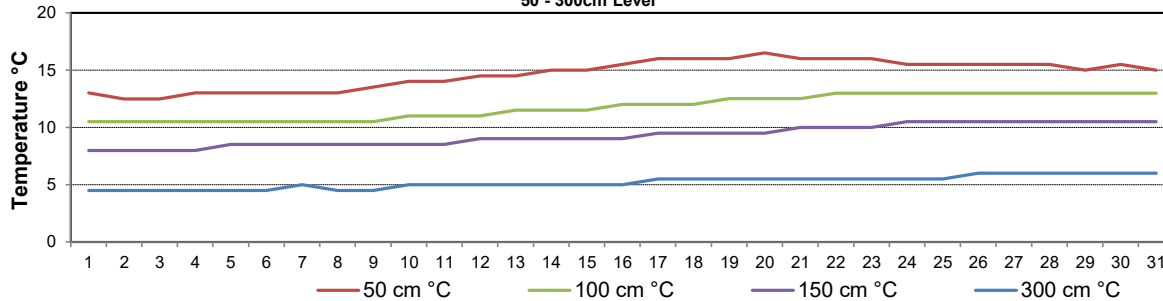
Soil Temperatures for July 2022

Surface - 20cm Level



Soil Temperatures for July 2022

50 - 300cm Level





SRC CLIMATE REFERENCE STATION DAILY DATA REPORT

CONSERVATION LEARNING CENTRE

Saskatchewan 53.03°N 105.77°W 451m asl Estab. 2011

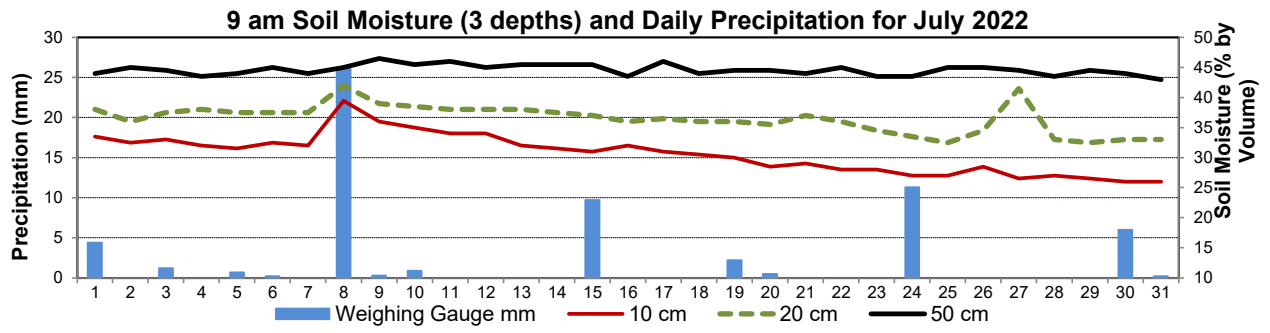
Preliminary

July 2022

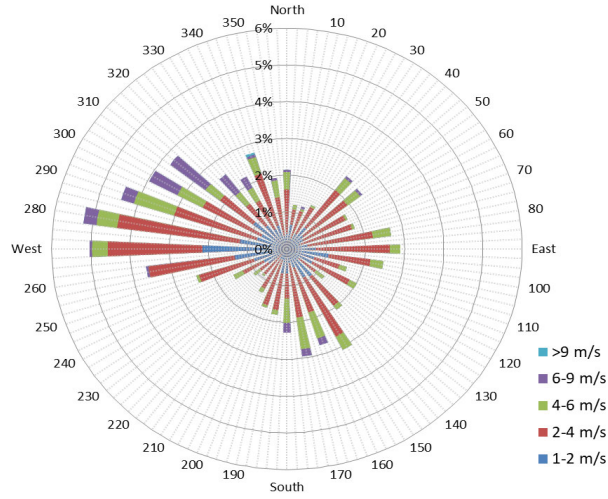
Day	2 meter Wind Speed			Soil Moisture at 0900 hrs (rounded to the 0.5%)								
	Daily Average	Max ½ hr Avg	½ hr Extreme Max	10 cm	20 cm	50 cm						
	km/h	km/h	km/h	% by volume (soil type is Clay Loam)								
1	4.0	11.2	16.0	33.5	38.0	44.0						
2	2.0	6.1	15.1	32.5	36.0	45.0						
3	2.0	8.3	14.3	33.0	37.5	44.5						
4	5.0	16.9	25.2	32.0	38.0	43.5						
5	7.0	14.4	22.0	31.5	37.5	44.0						
6	5.0	11.5	16.2	32.5	37.5	45.0						
7	4.0	10.2	22.0	32.0	37.5	44.0						
8	7.0	15.5	27.3	39.5	42.0	45.0						
9	5.0	10.7	16.8	36.0	39.0	46.5						
10	3.0	13.3	23.1	35.0	38.5	45.5						
11	8.0	16.0	29.5	34.0	38.0	46.0						
12	2.0	7.0	13.3	34.0	38.0	45.0						
13	10.0	19.0	29.3	32.0	38.0	45.5						
14	3.0	12.2	20.6	31.5	37.5	45.5						
15	3.0	8.4	16.4	31.0	37.0	45.5						
16	4.0	11.8	17.7	32.0	36.0	43.5						
17	1.0	5.2	10.8	31.0	36.5	46.0						
18	1.0	5.8	12.0	30.5	36.0	44.0						
19	4.0	13.2	30.8	30.0	36.0	44.5						
20	11.0	18.7	28.7	28.5	35.5	44.5						
21	9.0	20.3	28.7	29.0	37.0	44.0						
22	6.0	18.7	29.6	28.0	36.0	45.0						
23	6.0	12.1	18.7	28.0	34.5	43.5						
24	4.0	15.4	32.7	27.0	33.5	43.5						
25	2.0	12.8	20.6	27.0	32.5	45.0						
26	9.0	19.3	28.7	28.5	34.5	45.0						
27	5.0	11.5	17.9	26.5	41.5	44.5						
28	1.0	6.5	14.5	27.0	33.0	43.5						
29	6.0	11.9	18.3	26.5	32.5	44.5						
30	6.0	15.1	23.5	26.0	33.0	44.0						
31	2.0	18.0	17.0	26.0	33.0	43.0						
Total												
Mean				31	37	44.6						
Extreme	11.0	20.3	32.7	39.5	42	46.5						
Date	20.5	20	20	17.5	17.5	20.5						

SRC proudly recognizes the following CRS supporters:

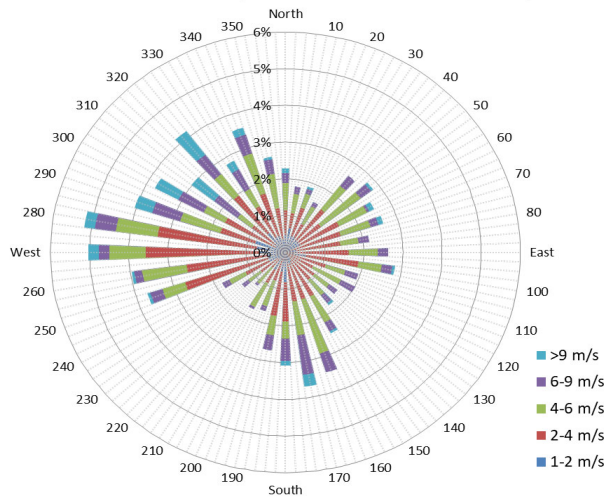




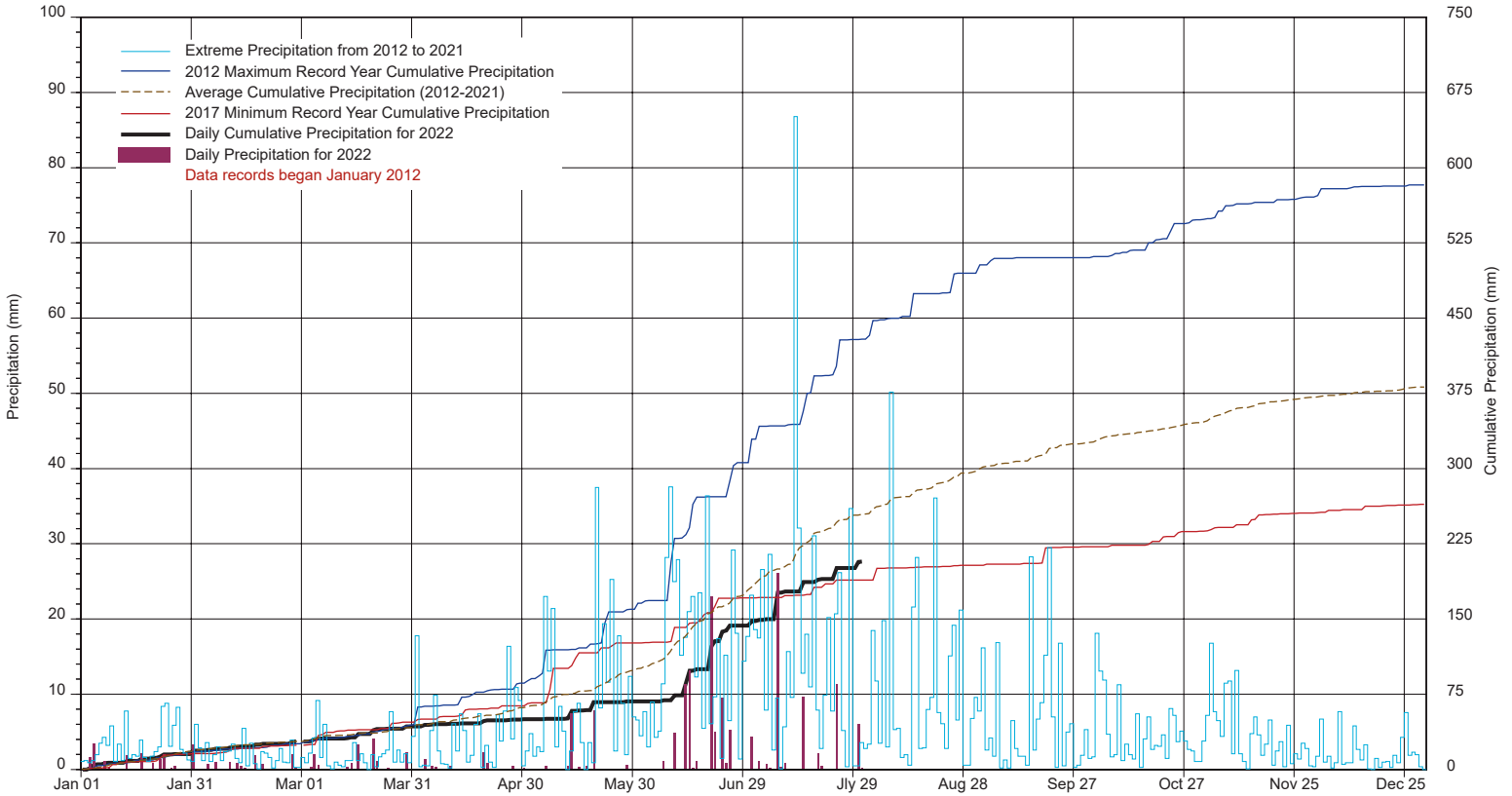
10 minute Average Wind Speed and Direction CLC July 2022



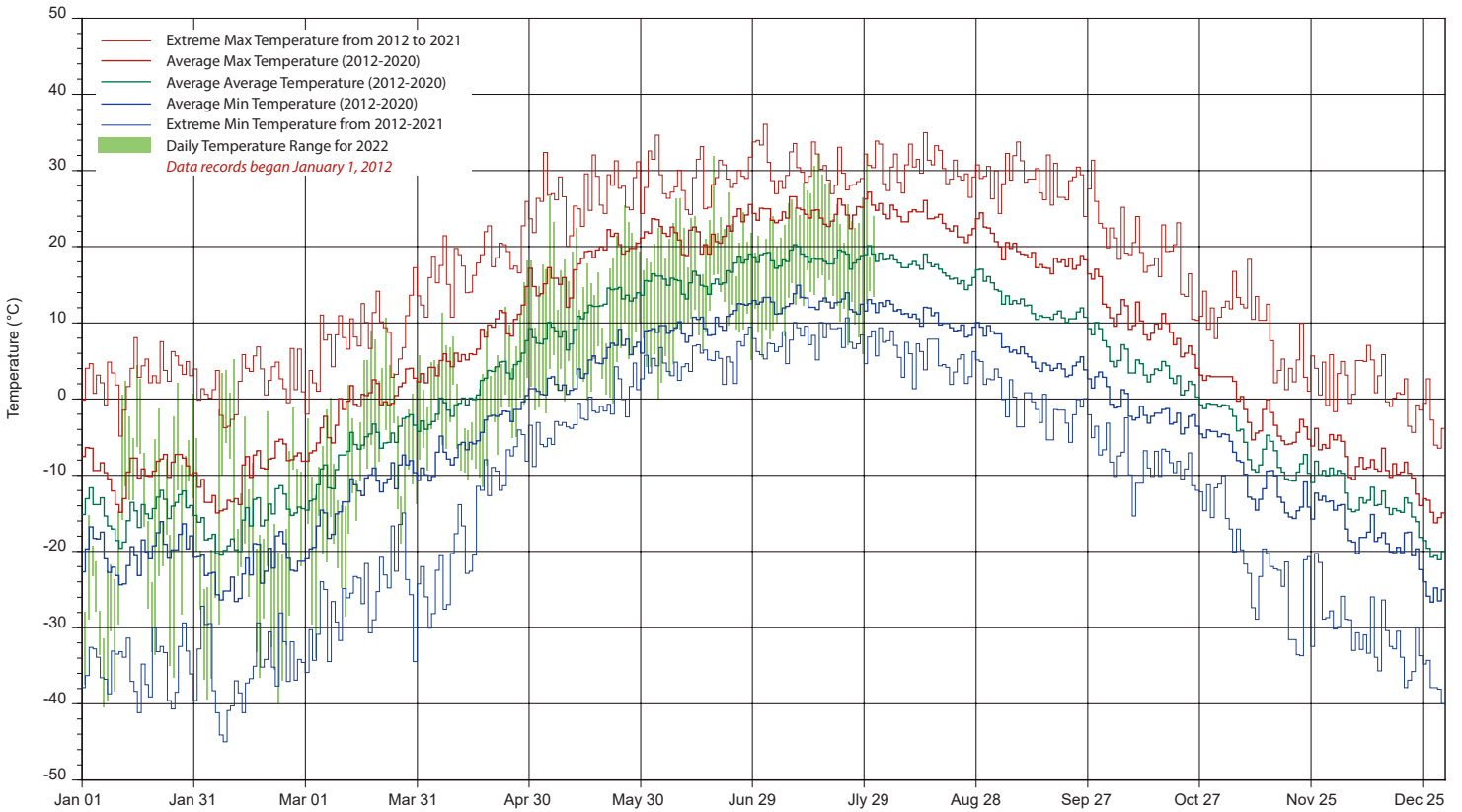
1/2 hr Maximum Wind Speed and Direction CLC July 2022



SRC's CLIMATE REFERENCE STATION at the Conservation Learning Centre 2022 PRECIPITATION AND AVERAGE



2022 TEMPERATURES AND AVERAGES



SRC proudly recognizes the following CRS supporters:

