



SRC CLIMATE REFERENCE STATION DAILY DATA REPORT

CONSERVATION LEARNING CENTRE

Saskatchewan 53.03°N 105.77°W 451m asl Estab. 2011

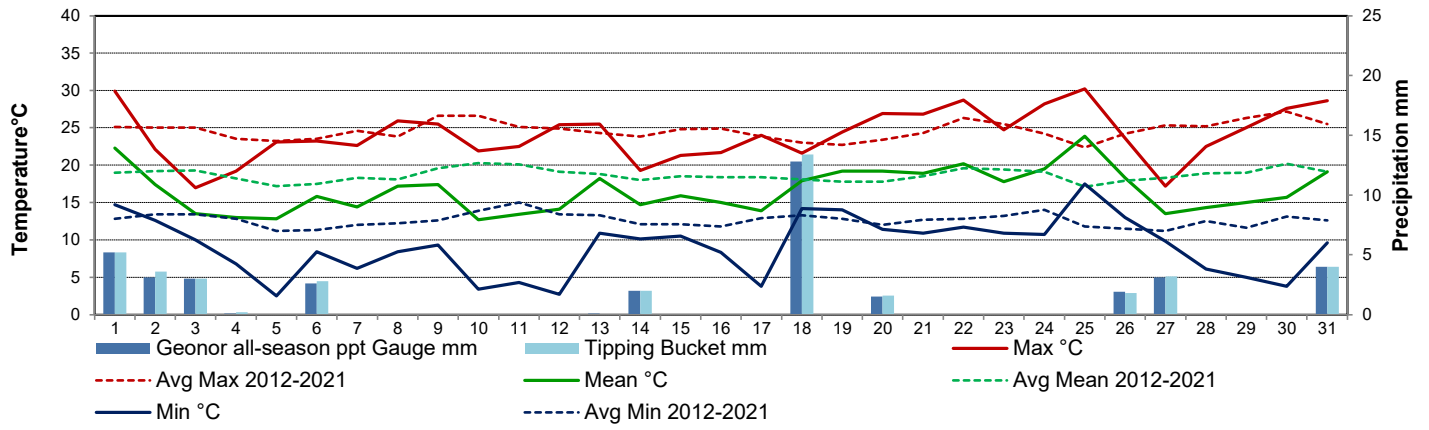
Preliminary July 2023

Day	Temperature						Degree-days			Precipitation			Relative Humidity		Station Pressure <i>corrected to sea level</i>	
	Max	Avg Max	Min	Avg Min	Mean	Avg Mean	Growing	Heating	Cooling	Geonor all-season ppt Gauge	Tipping Bucket	Notes	Max ½ hr Avg	Min ½ hr Avg	Max ½ hr Avg	Min ½ hr Avg
	°C	2012-2021	°C	2012-2021	°C	2012-2021	5°C base	18°C base	18°C base	mm	mm		%	%	mbar	mbar
1	29.9	25.1	14.7	12.8	22.3	19.0	17.3	0.0	4.3	5.2	5.2		100	47	1011	1003
2	22.1	25.0	12.6	13.4	17.4	19.2	12.4	0.6	0.0	3.1	3.6		99	47	1007	1004
3	17.0	25.0	10.0	13.4	13.5	19.3	8.5	4.5	0.0	3.0	3.0		94	75	1012	1004
4	19.2	23.5	6.8	12.8	13.0	18.2	8.0	5.0	0.0	0.1	0.2		98	46	1019	1012
5	23.1	23.2	2.5	11.2	12.8	17.2	7.8	5.2	0.0	0.0	0.0		100	41	1019	1012
6	23.2	23.5	8.4	11.3	15.8	17.5	10.8	2.2	0.0	2.6	2.8		96	47	1014	1010
7	22.6	24.6	6.2	12.0	14.4	18.3	9.4	3.6	0.0	0.0	0.0		96	39	1018	1015
8	25.9	23.8	8.4	12.2	17.2	18.1	12.2	0.8	0.0	0.0	0.0		94	43	1015	1006
9	25.5	26.6	9.3	12.6	17.4	19.6	12.4	0.6	0.0	0.0	0.0		92	56	1011	1004
10	21.9	26.6	3.4	13.9	12.7	20.3	7.7	5.3	0.0	0.0	0.0		100	41	1016	1011
11	22.5	25.1	4.3	15.0	13.4	20.1	8.4	4.6	0.0	0.0	0.0		100	48	1016	1012
12	25.4	24.9	2.7	13.4	14.1	19.1	9.1	3.9	0.0	0.0	0.0		100	40	1012	1006
13	25.5	24.3	10.9	13.3	18.2	18.8	13.2	0.0	0.2	0.1	0.0		96	38	1006	1004
14	19.3	23.8	10.1	12.1	14.7	18.0	9.7	3.3	0.0	2.0	2.0		94	54	1013	1006
15	21.3	24.8	10.5	12.1	15.9	18.5	10.9	2.1	0.0	0.0	0.0		93	54	1014	1012
16	21.7	24.9	8.3	11.8	15.0	18.4	10.0	3.0	0.0	0.0	0.0		97	49	1018	1014
17	24.0	23.8	3.8	12.9	13.9	18.4	8.9	4.1	0.0	0.0	0.0		100	46	1018	1009
18	21.6	23.0	14.2	13.3	17.9	18.1	12.9	0.1	0.0	12.8	13.4		98	67	1010	1005
19	24.4	22.7	14.0	12.8	19.2	17.8	14.2	0.0	1.2	0.0	0.0		97	57	1020	1010
20	26.9	23.4	11.4	12.0	19.2	17.8	14.2	0.0	1.2	1.5	1.6		99	51	1020	1018
21	26.8	24.3	10.9	12.7	18.9	18.5	13.9	0.0	0.9	0.0	0.0		100	50	1017	1013
22	28.7	26.3	11.7	12.8	20.2	19.6	15.2	0.0	2.2	0.0	0.0		100	41	1014	1011
23	24.7	25.5	10.9	13.2	17.8	19.4	12.8	0.2	0.0	0.0	0.0		100	65	1014	1011
24	28.2	24.2	10.7	14.0	19.5	19.1	14.5	0.0	1.5	0.0	0.0		100	55	1015	1009
25	30.2	22.4	17.5	11.8	23.9	17.1	18.9	0.0	5.9	0.0	0.0		94	55	1009	1003
26	23.6	24.2	13.0	11.5	18.3	17.9	13.3	0.0	0.3	1.9	1.8		98	44	1009	1006
27	17.2	25.3	9.8	11.2	13.5	18.3	8.5	4.5	0.0	3.1	3.2		100	74	1021	1009
28	22.5	25.2	6.1	12.5	14.3	18.9	9.3	3.7	0.0	0.0	0.0		100	46	1024	1021
29	25.0	26.3	5.0	11.6	15.0	19.0	10.0	3.0	0.0	0.0	0.0		100	41	1023	1020
30	27.6	27.2	3.8	13.1	15.7	20.2	10.7	2.3	0.0	0.0	0.0		100	35	1021	1015
31	28.6	25.5	9.6	12.6	19.1	19.1	14.1	0.0	1.1	4.0	4.0		98	55	1015	1010
Total							359.2	62.6	18.8	39.4	40.8					
Avg	24.1	24.6	9.1	12.6	16.6	18.7	Monthly 2012 - 2021 Average			75.0	2012-2021 Average					
Extreme	30.2	36.1	2.5	4.7			423.4	23	43.3	152.7	2023 Cumulative ppt		100	35	1024	1003
Date	25	2021	5	2015						252.3	Cumulative Average		1	30	28	1

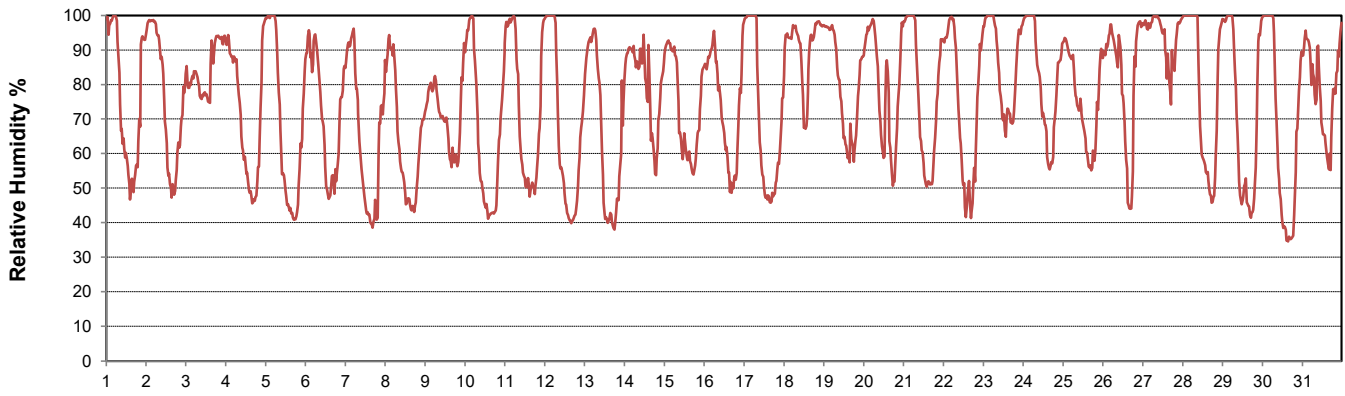
SRC proudly recognizes the following CRS supporters:



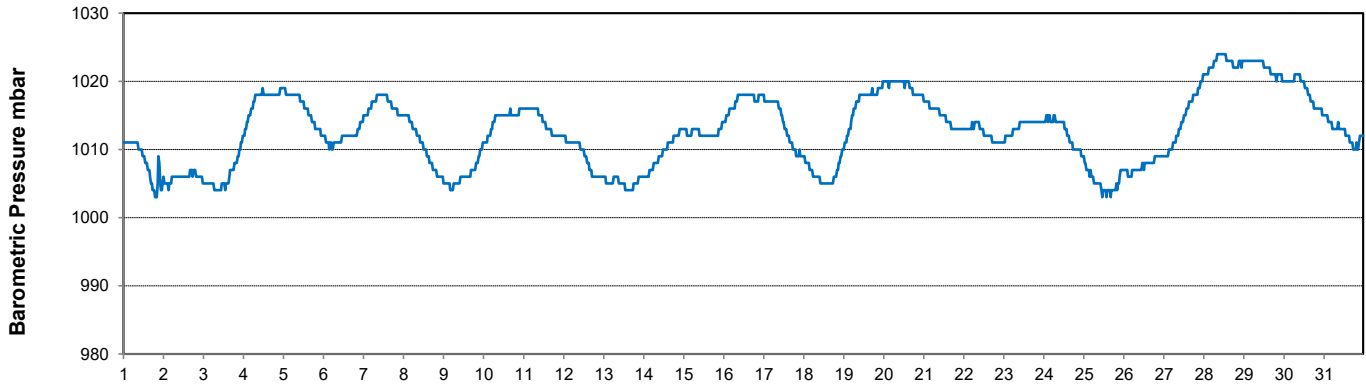
Temperature and Precipitation for July 2023



Relative Humidity for July 2023



Barometric Pressure Corrected to Sea Level for July 2023





SRC CLIMATE REFERENCE STATION DAILY DATA REPORT

CONSERVATION LEARNING CENTRE

Saskatchewan 53.03°N 105.77°W 451m asl Estab. 2011

Preliminary

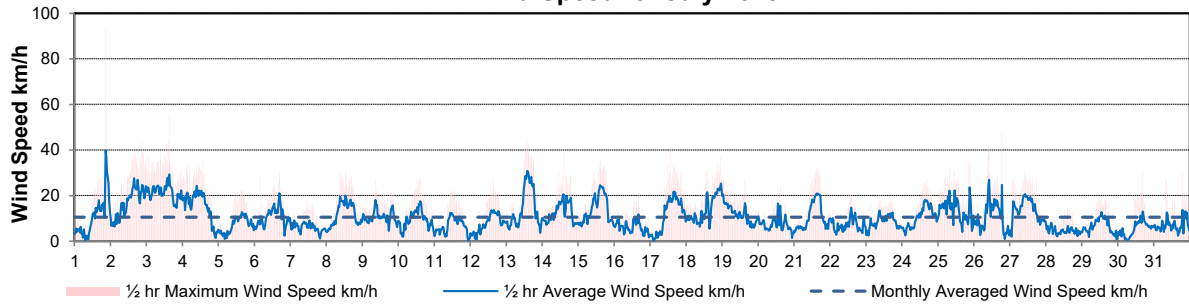
July 2023

Day	Wind Gust			Wind Speed (10 meters) Daily Average	Soil Temperatures at 0900hrs								Radiation				
	Max	Direction	Time		Surface	5 cm	10 cm	20 cm	50 cm	100 cm	150 cm	300 cm	Bright Sunshine	Bright Sunshine Possible	% possible	Global	Diffuse
	km/h				°C	°C	°C	°C	°C	°C	°C	°C	hours	hours		MJ/m ²	MJ/m ²
1	93.0	NW	20:49	11.0	20.5	17.0	18.0	16.0	14.5	11.0	8.5	5.0	11.9	16.8	70.7	26.1	7.4
2	43.6	WSW	21:20	17.0	15.5	17.0	18.5	16.5	15.0	11.0	8.5	5.0	8.2	16.8	48.8	21.9	8.9
3	55.1	NW	15:07	21.4	15.0	15.5	17.0	16.0	15.0	11.5	9.0	5.0	0.2	16.8	1.2	7.2	6.4
4	34.5	N	3:19	15.4	11.5	13.5	15.0	14.5	14.5	11.5	9.0	5.0	12.4	16.8	73.9	24.0	9.1
5	22.7	SW	16:00	7.2	14.0	12.5	14.0	14.0	14.0	11.5	9.0	5.0	14.9	16.8	88.9	27.7	5.7
6	30.6	NW	16:39	10.5	16.5	14.5	15.5	14.5	14.0	11.5	9.0	5.0	11.7	16.7	69.9	22.9	10.1
7	18.7	NE	11:49	6.2	15.5	14.0	15.0	14.5	14.0	11.5	9.0	5.0	14.2	16.7	85.0	28.1	5.0
8	30.9	NW	12:42	11.9	18.0	14.0	15.0	14.5	14.0	11.5	9.5	5.0	14.0	16.7	83.9	24.7	9.6
9	27.0	NNW	8:37	10.6	19.5	15.5	16.5	15.0	14.0	11.5	9.5	5.5	10.4	16.6	62.5	19.9	11.0
10	27.6	NE	14:29	9.6	15.0	14.0	15.5	15.0	14.5	11.5	9.5	5.5	15.6	16.6	93.9	29.0	4.6
11	22.5	SE	11:11	6.7	15.0	13.5	15.0	14.5	14.5	11.5	9.5	5.5	13.1	16.6	79.0	22.8	10.1
12	26.6	W	15:07	7.7	16.5	13.5	14.5	14.5	14.5	11.5	9.5	5.5	14.6	16.6	88.2	27.3	6.2
13	43.5	NW	14:21	14.5	18.0	15.0	16.0	15.0	14.5	11.5	9.5	5.5	13.2	16.5	80.0	25.1	9.3
14	38.6	NNE	14:24	12.4	14.0	14.5	16.0	15.0	14.5	11.5	9.5	5.5	3.9	16.5	23.7	12.2	7.8
15	35.2	NNW	14:50	14.0	16.0	14.0	15.0	14.5	14.0	11.5	9.5	5.5	7.4	16.4	45.0	18.7	10.9
16	21.2	ENE	16:08	6.1	16.0	14.5	15.5	14.5	14.0	11.5	9.5	5.5	8.5	16.4	51.9	18.1	11.1
17	40.5	ESE	13:55	11.6	15.0	13.5	14.5	14.0	14.0	11.5	9.5	5.5	10.5	16.4	64.2	22.9	8.8
18	36.5	NNE	23:21	14.1	15.0	15.0	16.0	15.0	14.0	11.5	9.5	5.5	1.0	16.3	6.1	8.9	6.7
19	27.0	NNE	0:43	12.0	17.5	15.0	16.0	14.5	14.0	11.5	9.5	5.5	11.1	16.3	68.2	21.0	9.4
20	24.7	NNW	13:21	7.3	18.0	15.5	16.5	15.5	14.5	11.5	9.5	6.0	10.7	16.2	66.0	19.2	9.9
21	32.1	NW	15:24	10.8	18.5	15.5	16.5	15.5	14.5	11.5	10.0	6.0	12.6	16.2	77.9	23.8	8.8
22	21.9	N	14:06	7.2	19.0	16.0	17.0	16.0	15.0	12.0	10.0	6.0	10.6	16.1	65.7	20.7	11.2
23	21.0	ENE	9:28	8.6	18.5	16.0	17.0	16.0	15.0	12.0	10.0	6.0	7.3	16.1	45.4	16.0	11.1
24	27.1	E	16:33	10.4	19.0	16.0	17.0	16.0	15.0	12.0	10.0	6.0	10.9	16.0	68.0	19.4	10.5
25	35.1	NNW	20:57	13.6	21.0	17.5	18.5	16.5	15.0	12.0	10.0	6.0	10.3	16.0	64.5	19.8	9.3
26	47.9	NW	18:37	10.7	18.5	17.5	18.5	17.0	15.5	12.0	10.0	6.0	6.8	15.9	42.7	18.0	5.8
27	31.5	NE	9:49	13.8	11.0	16.0	17.5	16.5	15.5	12.5	10.0	6.0	2.4	15.9	15.1	11.2	8.5
28	14.5	SW	14:31	4.5	12.0	14.0	15.0	15.0	15.5	12.5	10.0	6.0	11.2	15.8	70.8	22.8	9.5
29	18.8	NNW	13:11	6.7	15.5	14.0	15.0	15.0	15.0	12.5	10.5	6.0	12.9	15.8	81.8	22.2	7.9
30	30.9	SSW	16:36	5.3	16.0	14.0	15.0	15.0	15.0	12.5	10.5	6.5	14.6	15.7	92.9	25.8	3.5
31	30.5	N	19:12	6.9	19.5	15.5	16.5	15.5	15.0	12.5	10.5	6.5	8.0	15.7	51.1	19.7	5.4
Total													315.1	506.6	62.2	647.1	259.5
Mean					16.5	15.0	16.1	15.2	14.6	11.7	9.6	5.6					
Extreme	93.0	NW	20:49														
Date	1																

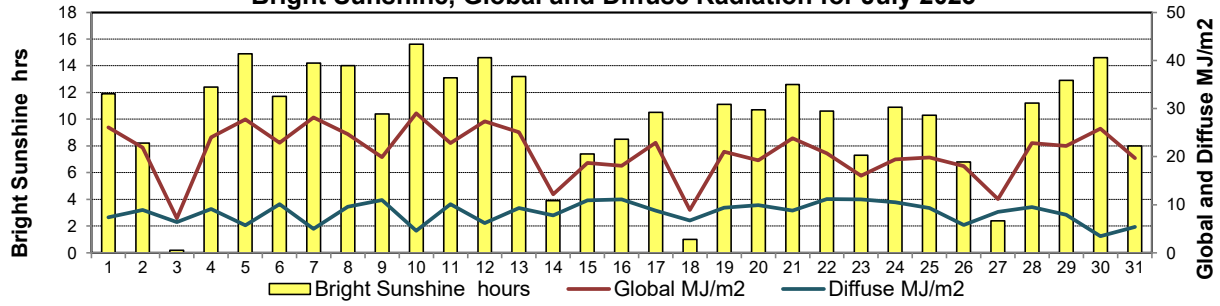
GLOSSARY OF TERMS

Degree-days	Radiation
T_m Mean Temperature	Bright Sunsh is the unobstructed direct radiation from the sun, as opposed to the shading of a location by clouds or by other atmospheric obstructions.
Growing (T _m -5°C); if T _m ≤ 5°C then GDD = 0	
Heating (18°C-T _m); if T _m ≥ 18°C then HDD = 0	
Cooling (T _m -18°C); if T _m ≤ 18°C then CDD = 0	Diffus is radiation reaching the earth's surface after having been scatte4red from the direct solar beam
T Trace of Precipitation	Global is the sum of the direct solar and diffuse radiation
SOG Depth of snow-on-the-ground	Relative Humidity The ratio of the air's water vapour content of its water vapour capacity which changes with temperature.
Red Cell no data available	Air Pressure The force exerted by the weight of a column of air above a given point
Red Number manual calculation	Wind Gust The daily highest instantaneous value recorded irrespective of direction and/or duration

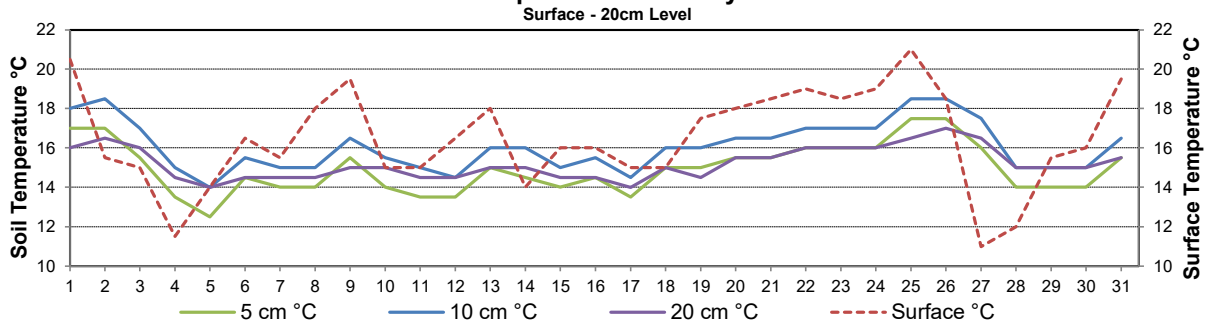
Wind Speed for July 2023



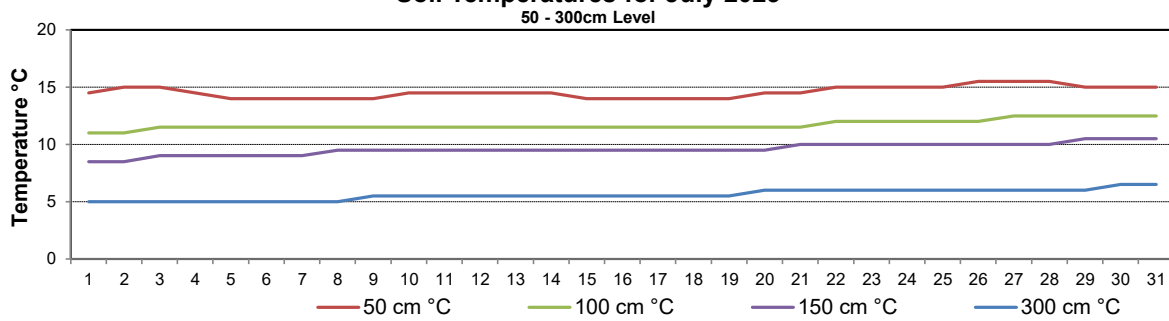
Bright Sunshine, Global and Diffuse Radiation for July 2023



Soil Temperatures for July 2023



Soil Temperatures for July 2023





SRC CLIMATE REFERENCE STATION DAILY DATA REPORT
CONSERVATION LEARNING CENTRE

Saskatchewan 53.03°N 105.77°W 451m asl Estab. 2011

Preliminary

July 2023

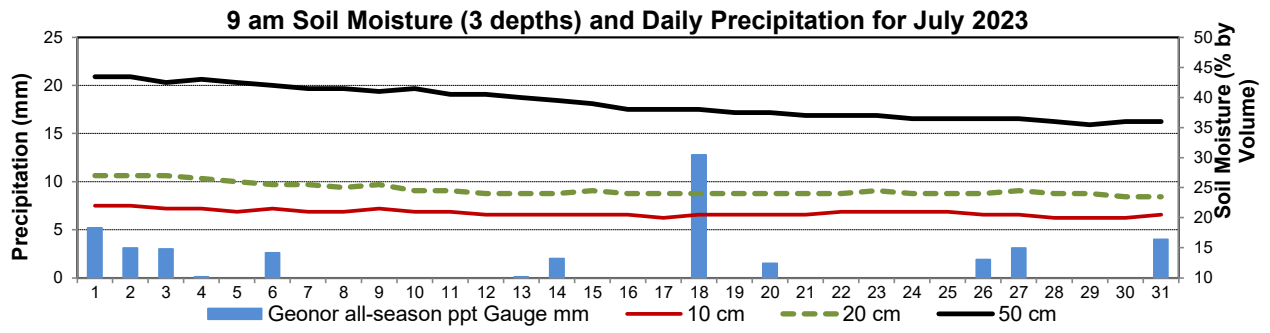
Day	2 meter Wind Speed			Soil Moisture at 0900 hrs (rounded to the 0.5%)								
	Daily Average	Max ½ hr Avg	½ hr Extreme Max	10 cm	20 cm	50 cm						
	km/h	km/h	km/h	% by volume (soil type is Clay Loam)								
1	6.0	26.1	63.1	22.0	27.0	43.5						
2	11.0	19.2	32.5	22.0	27.0	43.5						
3	15.0	19.1	34.6	21.5	27.0	42.5						
4	10.0	17.6	28.7	21.5	26.5	43.0						
5	3.0	8.9	16.4	21.0	26.0	42.5						
6	5.0	14.0	20.4	21.5	25.5	42.0						
7	2.0	6.7	14.7	21.0	25.5	41.5						
8	6.0	13.7	21.2	21.0	25.0	41.5						
9	5.0	12.2	18.9	21.5	25.5	41.0						
10	5.0	12.8	20.4	21.0	24.5	41.5						
11	3.0	8.4	17.2	21.0	24.5	40.5						
12	4.0	9.3	17.7	20.5	24.0	40.5						
13	8.0	18.9	29.1	20.5	24.0	40.0						
14	6.0	13.9	28.1	20.5	24.0	39.5						
15	7.0	15.4	23.3	20.5	24.5	39.0						
16	2.0	8.5	16.6	20.5	24.0	38.0						
17	6.0	13.0	31.2	20.0	24.0	38.0						
18	8.0	17.9	26.6	20.5	24.0	38.0						
19	7.0	14.8	23.1	20.5	24.0	37.5						
20	2.0	10.6	16.4	20.5	24.0	37.5						
21	5.0	13.3	20.4	20.5	24.0	37.0						
22	2.0	10.9	16.0	21.0	24.0	37.0						
23	4.0	10.2	14.9	21.0	24.5	37.0						
24	6.0	12.6	19.5	21.0	24.0	36.5						
25	8.0	16.3	24.1	21.0	24.0	36.5						
26	5.0	16.3	32.5	20.5	24.0	36.5						
27	8.0	14.6	23.1	20.5	24.5	36.5						
28	0.0	3.5	11.2	20.0	24.0	36.0						
29	2.0	7.9	14.5	20.0	24.0	35.5						
30	2.0	8.1	18.3	20.0	23.5	36.0						
31	2.0	18.0	20.0	20.5	23.5	36.0						
Total												
Mean				21	25	39.1						
Extreme	15.0	26.1	63.1	22	27	43.5						
Date	16	21.5	21.5	21.5	21.5	21.5						

SRC proudly recognizes the following CRS supporters:

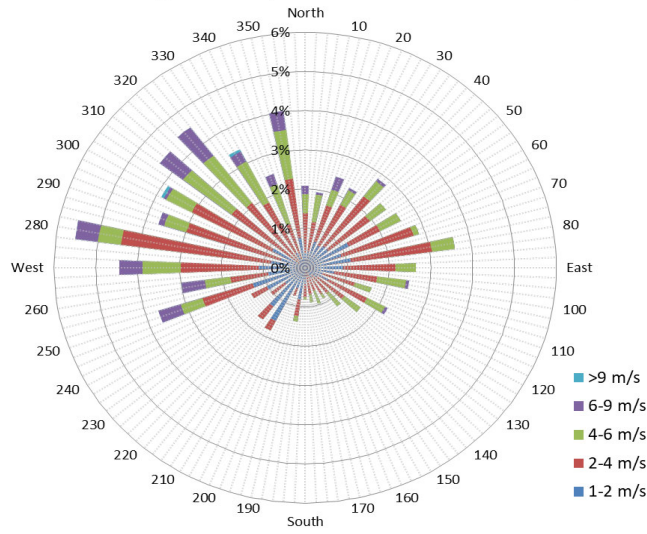


Agriculture and Agri-Food Canada / Agriculture et Agroalimentaire Canada

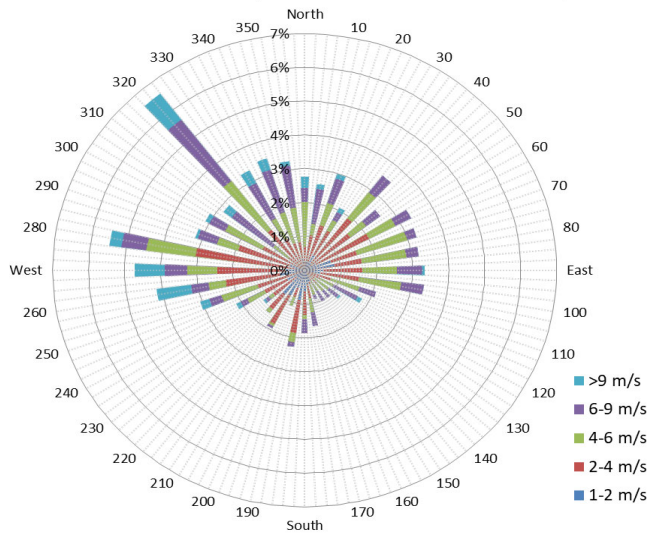




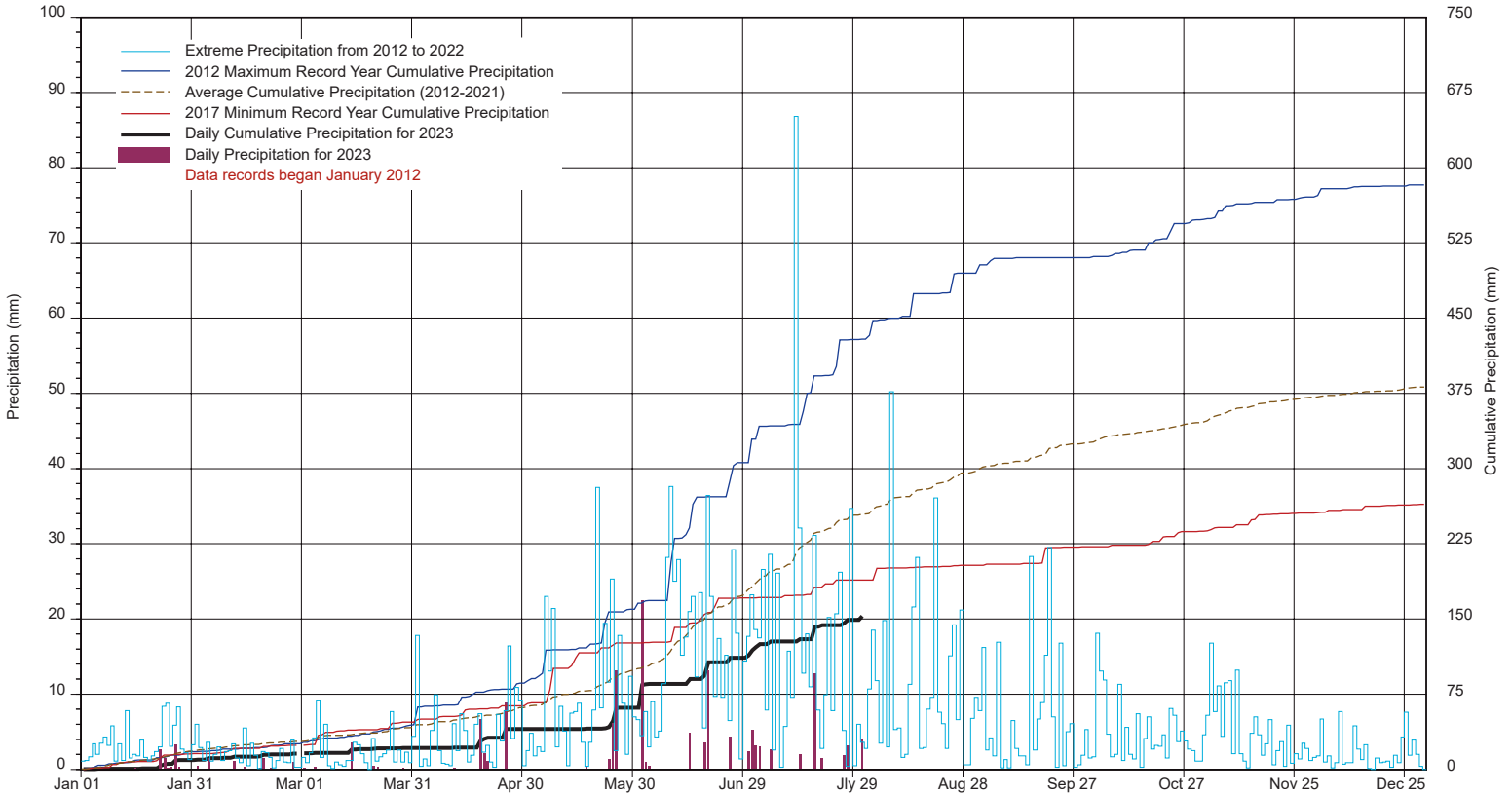
10 minute Average Wind Speed and Direction CLC July 2023



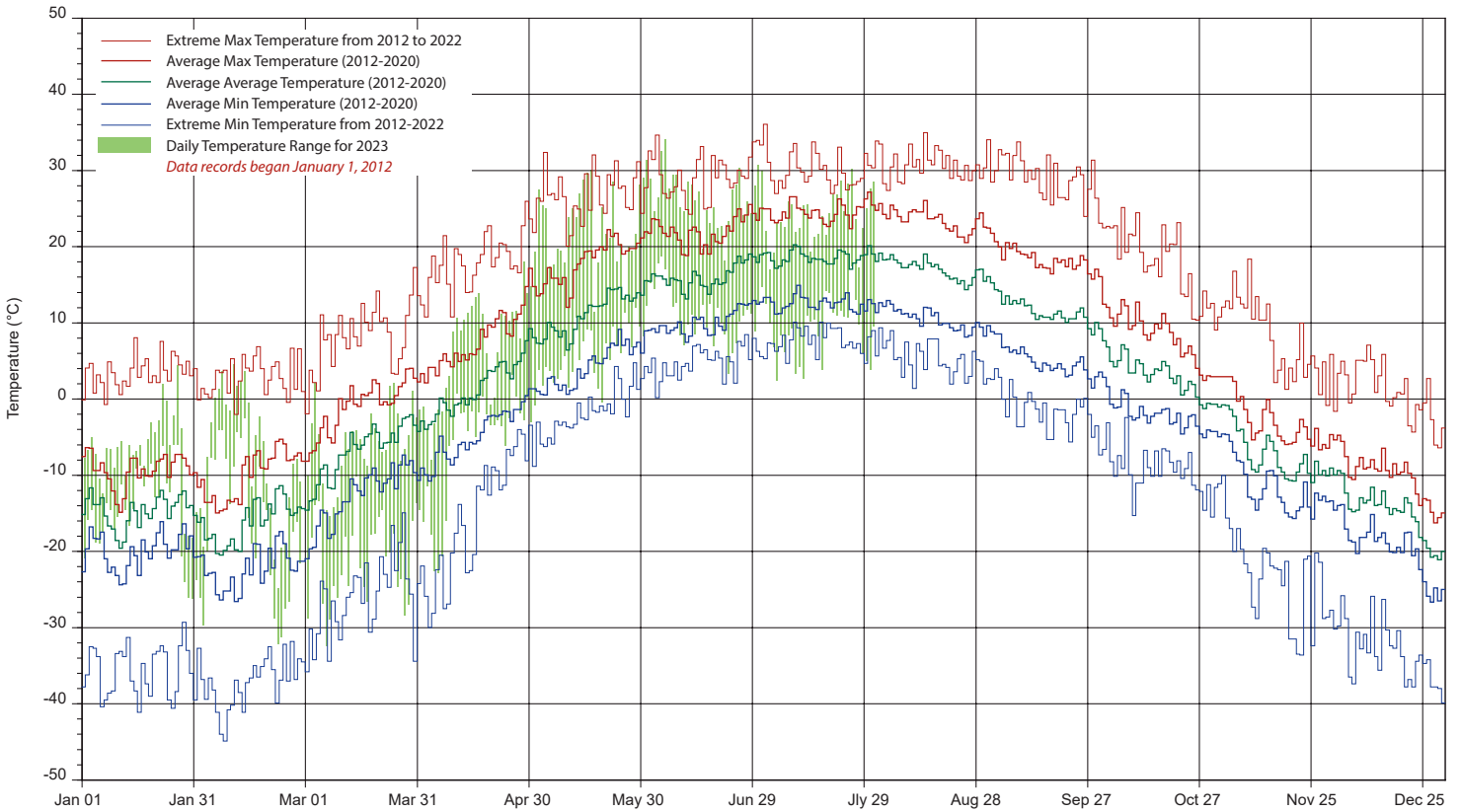
1/2 hr Maximum Wind Speed and Direction CLC July 2023



SRC's CLIMATE REFERENCE STATION at the Conservation Learning Centre 2023 PRECIPITATION AND AVERAGE



2023 TEMPERATURES AND AVERAGES



SRC proudly recognizes the following CRS supporters:

