



SRC CLIMATE REFERENCE STATION DAILY DATA REPORT

CONSERVATION LEARNING CENTRE

Saskatchewan 53.03°N 105.77°W 451m asl Estab. 2011

Preliminary July 2024

Day	Temperature (HMP155A)						Degree-days			Precipitation			Relative Humidity (HMP115A)		Station Pressure <i>corrected to sea level</i>	
	Max	Avg Max	Min	Avg Min	Mean	Avg Mean	Growing	Heating	Cooling	Geonor all-season ppt Gauge	Tipping Bucket	Notes	Max ½ hr Avg	Min ½ hr Avg	Max ½ hr Avg	Min ½ hr Avg
	°C	2012-2021	°C	2012-2021	°C	2012-2021	5°C base	18°C base	18°C base	mm	mm		%	%	mbar	mbar
1	18.2	25.1	11.0	12.8	14.6	19.0	9.6	3.4	0.0	2.5	3.6		95	71	1012	1004
2	22.1	25.0	10.9	13.4	16.5	19.2	11.5	1.5	0.0	7.7	7.0		98	53	1006	1003
3	25.9	25.0	11.2	13.4	18.6	19.3	13.6	0.0	0.6	0.0	0.2		93	44	1013	1005
4	24.9	23.5	11.4	12.8	18.2	18.2	13.2	0.0	0.2	0.0	0.0		93	45	1016	1013
5	25.7	23.2	10.7	11.2	18.2	17.2	13.2	0.0	0.2	0.0	0.0		92	44	1015	1009
6	27.1	23.5	8.0	11.3	17.6	17.5	12.6	0.4	0.0	0.0	0.0		94	37	1011	1008
7	25.3	24.6	11.1	12.0	18.2	18.3	13.2	0.0	0.2	0.0	0.0		89	40	1014	1011
8	26.4	23.8	8.7	12.2	17.6	18.1	12.6	0.4	0.0	3.2	11.0	rain fell right at midnite	98	45	1013	1010
9	28.4	26.6	9.7	12.6	19.1	19.6	14.1	0.0	1.1	9.9	2.0		98	42	1014	1011
10	27.7	26.6	11.9	13.9	19.8	20.3	14.8	0.0	1.8	0.0	0.0		96	53	1014	1007
11	31.2	25.1	14.5	15.0	22.9	20.1	17.9	0.0	4.9	0.0	0.0		98	51	1008	1005
12	25.2	24.9	12.2	13.4	18.7	19.1	13.7	0.0	0.7	3.1	3.4		92	41	1014	1008
13	23.7	24.3	8.4	13.3	16.1	18.8	11.1	1.9	0.0	0.9	1.0		92	41	1016	1012
14	22.8	23.8	10.6	12.1	16.7	18.0	11.7	1.3	0.0	1.5	1.8		96	51	1013	1011
15	23.1	24.8	5.9	12.1	14.5	18.5	9.5	3.5	0.0	0.0	0.0		98	44	1014	1011
16	22.4	24.9	6.1	11.8	14.3	18.4	9.3	3.7	0.0	0.0	0.0		98	50	1018	1012
17	27.8	23.8	9.2	12.9	18.5	18.4	13.5	0.0	0.5	0.0	0.0		94	42	1019	1016
18	30.6	23.0	13.7	13.3	22.2	18.1	17.2	0.0	4.2	0.0	0.0		90	39	1016	1013
19	31.7	22.7	13.2	12.8	22.5	17.8	17.5	0.0	4.5	0.0	0.0		99	47	1017	1014
20	29.3	23.4	14.2	12.0	21.8	17.8	16.8	0.0	3.8	0.0	0.0		99	51	1020	1017
21	27.0	24.3	13.2	12.7	20.1	18.5	15.1	0.0	2.1	0.0	0.0		99	60	1021	1019
22	22.2	26.3	11.0	12.8	16.6	19.6	11.6	1.4	0.0	0.0	0.0		97	63	1020	1018
23	22.5	25.5	8.8	13.2	15.7	19.4	10.7	2.3	0.0	0.0	0.0		99	65	1018	1014
24	28.5	24.2	13.5	14.0	21.0	19.1	16.0	0.0	3.0	0.0	0.0		98	68	1014	1009
25	29.1	22.4	12.8	11.8	21.0	17.1	16.0	0.0	3.0	0.1	0.2		99	61	1009	1001
26	20.3	24.2	9.5	11.5	14.9	17.9	9.9	3.1	0.0	0.0	0.0		77	43	1003	999
27	17.1	25.3	10.6	11.2	13.9	18.3	8.9	4.1	0.0	1.5	1.2		92	54	1002	997
28	25.2	25.2	10.1	12.5	17.7	18.9	12.7	0.3	0.0	0.0	0.0		95	45	1005	1002
29	28.5	26.3	9.1	11.6	18.8	19.0	13.8	0.0	0.8	0.0	0.0		98	35	1005	1001
30	25.7	27.2	8.9	13.1	17.3	20.2	12.3	0.7	0.0	0.0	0.0		99	44	1007	1000
31	29.3	25.5	6.9	12.6	18.1	19.1	13.1	0.0	0.1	0.0	0.0		97	32	1010	1007
Total							406.7	28.0	31.7	30.4	31.4					
Avg	25.6	24.6	10.5	12.6	18.1	18.7	Monthly 2012 - 2021 Average		75.0	2012-2021 Average						
Extreme	31.7	36.1	5.9	4.7			423.4	23	43.3	268.1	2024 Cumulative ppt		99	32	1021	997
Date	19	2021	15	2015						252.3	Cumulative Average		19	31	21	27

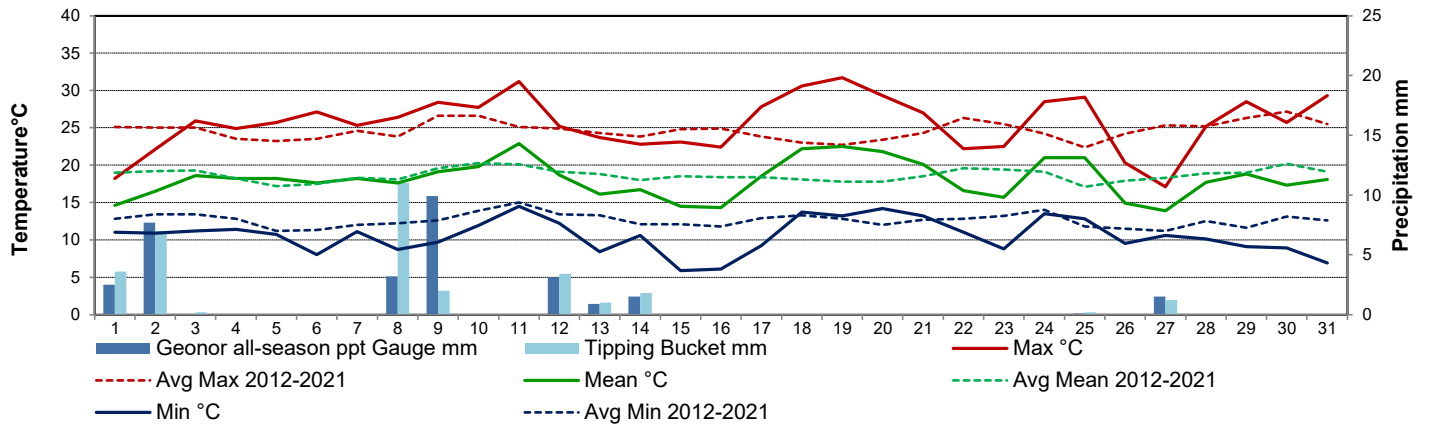
Note: Red numbers indicate manual calculation; Red cell indicate data not available

Precipitation is measured precipitation. It has not been corrected for wind speed.

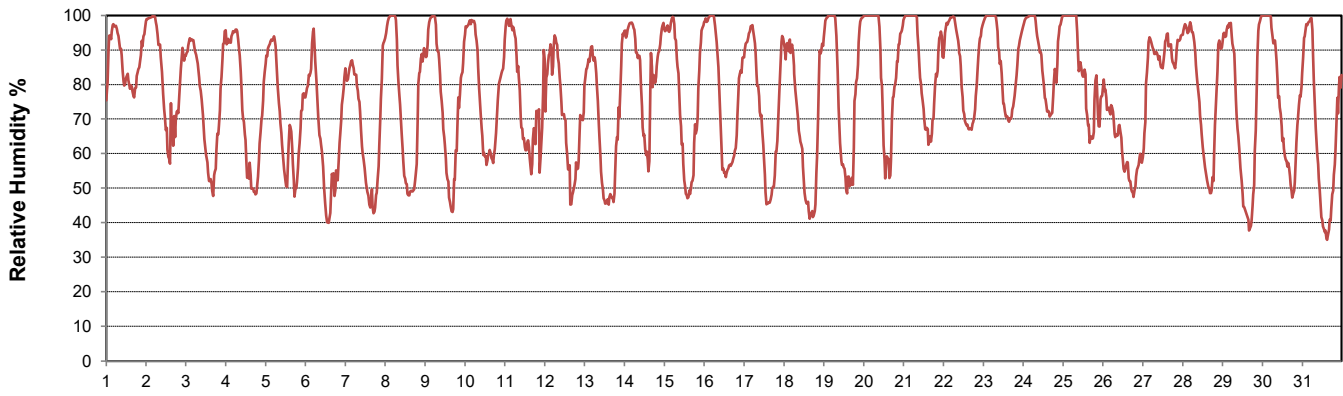
SRC proudly recognizes the following CRS supporters:



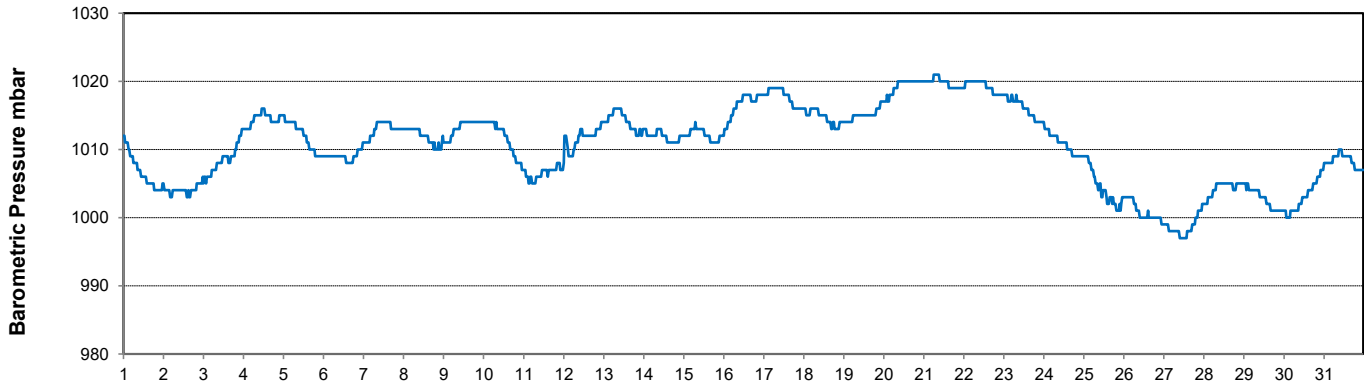
Temperature and Precipitation for July 2024



Relative Humidity for July 2024



Barometric Pressure Corrected to Sea Level for July 2024





SRC CLIMATE REFERENCE STATION DAILY DATA REPORT

CONSERVATION LEARNING CENTRE

Saskatchewan 53.03°N 105.77°W 451m asl Estab. 2011

Preliminary

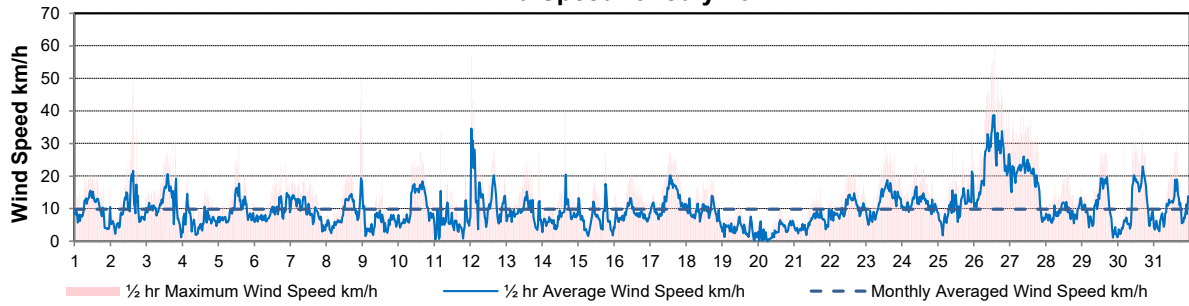
July 2024

Day	Wind Gust			Wind Speed (10 meters) Daily Average	Soil Temperatures at 0900hrs								Radiation				
	Max	Direction	Time		Surface	5 cm	10 cm	20 cm	50 cm	100 cm	150 cm	300 cm	Bright Sunshine	Bright Sunshine Possible	% possible	Global	Diffuse
	km/h				°C	°C	°C	°C	°C	°C	°C	°C	hours	hours		MJ/m ²	MJ/m ²
1	22.2	E	10:47	9.7	17.0	15.0	15.5	14.0	12.5	9.0	7.0	3.5	2.2	16.8	13.1	13.8	11.5
2	49.5	NW	15:12	9.2	17.0	15.5	16.0	14.0	13.0	9.0	7.0	3.5	6.9	16.8	41.0	18.0	10.1
3	32.5	WSW	17:35	11.4	19.0	15.5	16.0	14.5	13.0	9.0	7.0	3.5	11.4	16.8	67.9	25.7	8.6
4	19.8	NNW	3:19	6.4	17.5	16.5	17.5	15.5	13.5	9.5	7.0	3.5	10.4	16.8	62.1	22.6	8.2
5	31.0	WNW	13:35	9.4	20.0	17.0	18.0	16.0	14.0	9.5	7.5	4.0	13.5	16.7	80.6	21.7	7.9
6	24.0	WNW	21:22	9.0	20.0	16.5	17.5	16.0	14.0	10.0	7.5	4.0	14.3	16.7	85.6	23.9	8.2
7	20.5	NNE	9:50	9.4	19.0	17.5	18.5	16.5	14.5	10.0	7.5	4.0	13.4	16.7	80.3	26.5	7.5
8	49.1	N	23:54	9.0	19.5	17.0	18.5	16.5	14.5	10.5	7.5	4.0	13.7	16.7	82.3	23.9	9.8
9	30.9	NE	0:00	5.8	19.5	17.5	18.5	16.5	15.0	10.5	8.0	4.0	13.1	16.6	78.8	24.3	8.7
10	27.7	SSW	14:33	10.9	23.0	18.5	19.5	17.5	15.5	10.5	8.0	4.0	14.6	16.6	88.0	26.7	6.6
11	33.5	NNW	4:16	5.9	24.5	20.0	21.0	18.5	16.0	11.0	8.0	4.0	13.0	16.6	78.5	24.6	7.1
12	57.3	WNW	0:49	13.5	19.5	20.0	21.0	19.0	16.5	11.0	8.0	4.0	12.9	16.5	78.1	24.1	8.6
13	27.1	WNW	21:52	8.9	17.0	17.5	19.5	18.5	17.0	11.5	8.5	4.5	12.7	16.5	77.1	25.8	5.8
14	39.8	WNW	15:45	7.6	17.0	18.5	20.0	18.5	16.5	12.0	8.5	4.5	7.3	16.4	44.4	17.0	10.7
15	28.0	WSW	18:22	6.7	16.0	16.5	18.5	17.5	16.5	12.0	9.0	4.5	13.3	16.4	81.1	24.3	7.0
16	20.9	SE	11:46	8.2	16.5	17.0	18.5	17.5	16.0	12.0	9.0	4.5	14.9	16.4	91.1	26.7	6.0
17	27.6	SW	13:53	12.6	18.5	17.5	19.0	17.5	16.5	12.5	9.0	4.5	12.1	16.3	74.1	23.4	8.6
18	19.1	SSW	17:29	8.9	22.0	19.0	20.5	18.0	16.5	12.5	9.5	4.5	15.0	16.3	92.1	25.2	7.4
19	11.8	WNW	11:30	3.7	22.5	20.0	21.0	19.0	17.0	12.5	9.5	4.5	12.5	16.2	77.0	20.2	9.1
20	10.3	S	14:31	3.1	21.5	20.5	22.0	19.5	17.5	12.5	9.5	5.0	8.1	16.2	50.0	14.8	9.5
21	16.4	N	17:51	5.7	20.5	20.0	21.5	19.5	17.5	13.0	9.5	5.0	8.5	16.1	52.7	15.2	10.3
22	21.0	E	16:51	10.1	17.5	19.0	20.5	19.0	17.5	13.0	10.0	5.0	8.8	16.1	54.7	18.8	11.4
23	29.1	ESE	13:22	12.2	16.5	18.5	20.0	18.5	17.5	13.0	10.0	5.0	4.9	16.0	30.5	14.8	11.2
24	23.2	E	9:31	11.5	20.0	19.0	20.0	18.5	17.0	13.0	10.0	5.0	6.5	16.0	40.7	15.5	9.7
25	34.4	WNW	22:52	10.9	23.0	20.0	21.0	19.0	17.0	13.5	10.0	5.0	7.3	15.9	45.8	14.9	7.8
26	60.5	WSW	13:36	24.8	16.5	18.0	20.0	19.0	17.5	13.5	10.5	5.0	6.1	15.9	38.4	11.8	8.2
27	38.1	WSW	9:16	18.8	15.5	16.5	18.5	17.0	17.0	13.5	10.5	5.0	0.4	15.8	2.5	5.2	4.6
28	21.8	WNW	13:30	9.0	17.0	16.0	17.0	16.0	16.5	13.0	10.5	4.5	12.4	15.8	78.5	21.6	9.9
29	27.6	S	13:42	10.2	20.5	17.0	18.5	17.0	16.5	13.5	10.5	5.5	13.0	15.7	82.6	23.6	6.9
30	33.2	NW	16:48	11.1	19.0	17.5	19.0	17.5	16.5	13.5	11.0	5.5	11.9	15.7	75.9	21.1	9.1
31	29.5	WSW	15:15	9.4	21.5	17.0	18.5	17.0	16.5	13.5	11.0	5.5	13.3	15.6	85.1	23.9	5.3
Total													328.4	505.7	64.9	639.6	261.3
Mean				9.8	19.2	17.8	19.1	17.4	15.9	11.7	8.9	4.5					
Extreme	60.5	WSW	13:36														
Date	26																

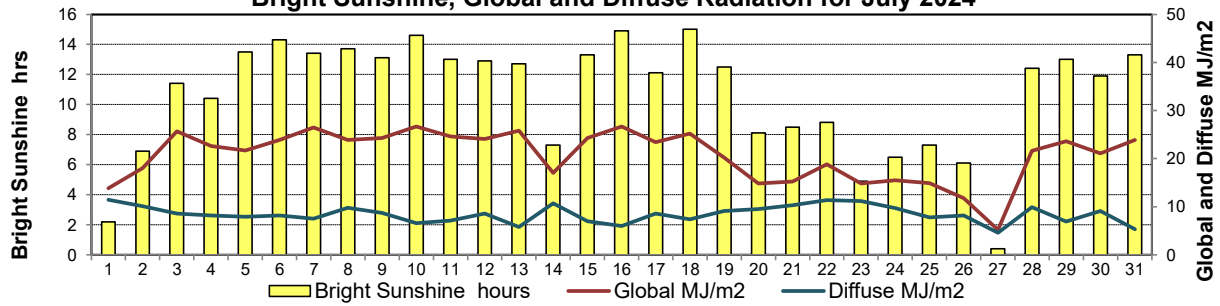
GLOSSARY OF TERMS

Degree-days	Radiation
T_m Mean Temperature	Bright Sunshine is the unobstructed direct radiation from the sun, as opposed to the shading of a location by clouds or by other atmospheric obstructions.
Growing (T _m -5°C); if T _m ≤ 5°C then GDD = 0	
Heating (18°C-T _m); if T _m ≥ 18°C then HDD = 0	
Cooling (T _m -18°C); if T _m ≤ 18°C then CDD = 0	Diffuse is radiation reaching the earth's surface after having been scattered from the direct solar beam
T Trace of Precipitation	Global is the sum of the direct solar and diffuse radiation
SOG Depth of snow-on-the-ground	Relative Humidity The ratio of the air's water vapour content of its water vapour capacity which changes with temperature.
Red Cell no data available	Air Pressure The force exerted by the weight of a column of air above a given point
Red Number manual calculation	Wind Gust The daily highest instantaneous value recorded irrespective of direction and/or duration

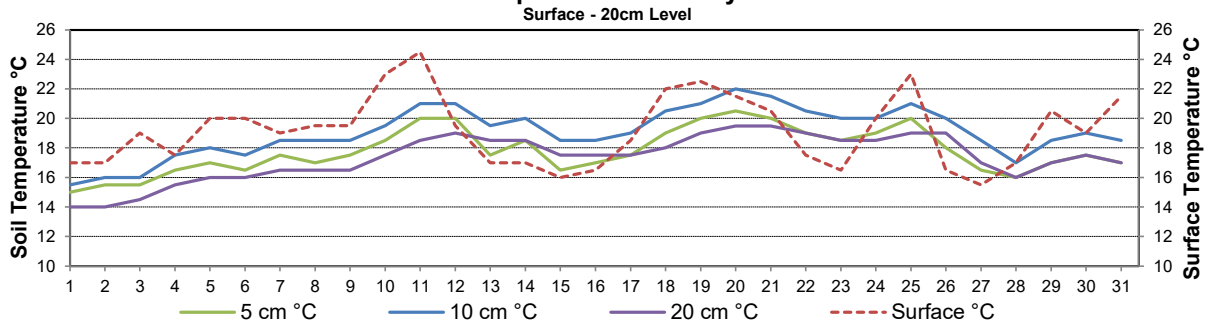
Wind Speed for July 2024



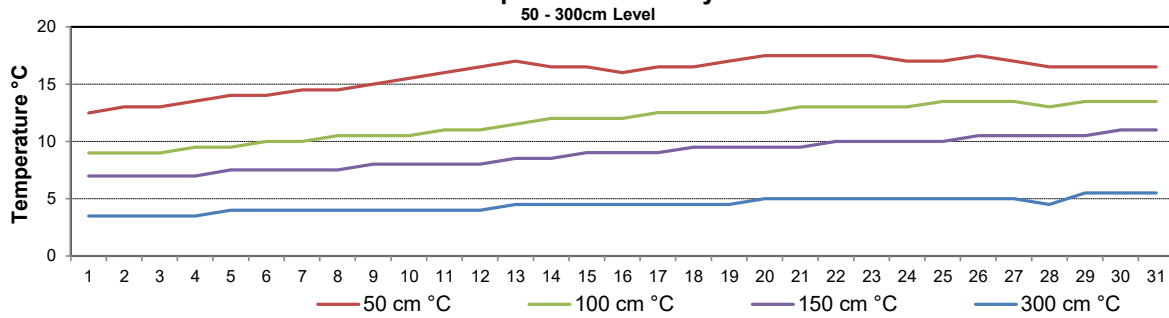
Bright Sunshine, Global and Diffuse Radiation for July 2024



Soil Temperatures for July 2024



Soil Temperatures for July 2024





SRC CLIMATE REFERENCE STATION DAILY DATA REPORT

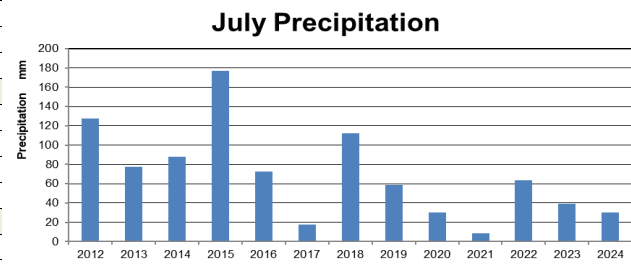
CONSERVATION LEARNING CENTRE

Saskatchewan 53.03°N 105.77°W 451m asl Estab. 2011

Preliminary

July 2024

Day	2 meter Wind Speed			Soil Moisture at 0900 hrs (rounded to the 0.5%)			July Temperatures
	Daily Average	Max ½ hr Avg	½ hr Extreme Max	10 cm	20 cm	50 cm	
	km/h	km/h	km/h	% by volume (soil type is Clay Loam)			
1	5.0	11.9	17.6	33.5	33.0	44.0	
2	7.0	16.0	38.5	33.0	32.5	43.5	
3	7.0	15.5	23.3	33.0	33.0	43.0	
4	2.0	8.6	15.8	32.0	32.0	43.5	
5	4.0	13.7	24.5	32.0	31.5	43.5	
6	4.0	10.6	18.7	31.0	30.5	43.0	
7	4.0	10.2	15.6	29.0	29.5	43.0	
8	4.0	12.7	36.2	28.0	28.0	43.0	
9	1.0	7.1	25.6	34.5	32.5	43.5	
10	6.0	13.6	21.6	32.5	32.5	43.5	
11	2.0	10.8	24.5	31.0	32.0	43.5	
12	8.0	26.0	46.0	30.0	31.5	43.5	
13	3.0	11.6	19.5	29.0	31.0	43.0	
14	3.0	13.6	31.4	28.0	31.0	43.0	
15	3.0	12.0	22.0	27.5	30.0	43.5	
16	3.0	8.9	15.2	27.5	30.5	43.0	
17	6.0	15.7	22.7	27.0	30.0	42.0	
18	3.0	9.5	17.9	26.0	29.5	42.5	
19	0.0	2.1	10.4	25.5	29.0	42.0	
20	0.0	1.3	9.5	25.5	29.0	42.0	
21	0.0	4.4	11.4	25.0	29.0	42.0	
22	5.0	10.8	17.4	24.5	29.0	42.0	
23	6.0	12.9	23.1	24.5	28.0	42.0	
24	6.0	12.3	18.5	24.5	27.5	41.5	
25	5.0	15.3	26.4	23.5	27.0	42.0	
26	18.0	28.8	45.8	23.0	27.0	41.0	
27	14.0	19.7	32.1	22.0	26.0	42.0	
28	3.0	9.7	17.6	21.5	26.0	41.0	
29	5.0	14.4	22.0	21.5	26.0	40.5	
30	6.0	16.9	23.9	21.0	25.5	40.5	
31	5.0	19.0	22.0	20.5	25.0	40.0	
Total							
Mean				27	30	42.5	
Extreme	18.0	28.8	46.0	34.5	33	44	
Date	19	19	25	24	18	18	



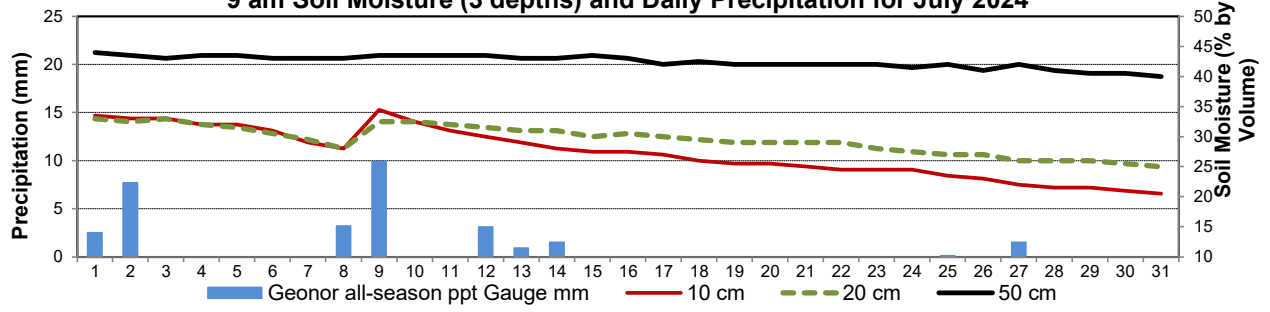
SRC proudly recognizes the following CRS supporters:



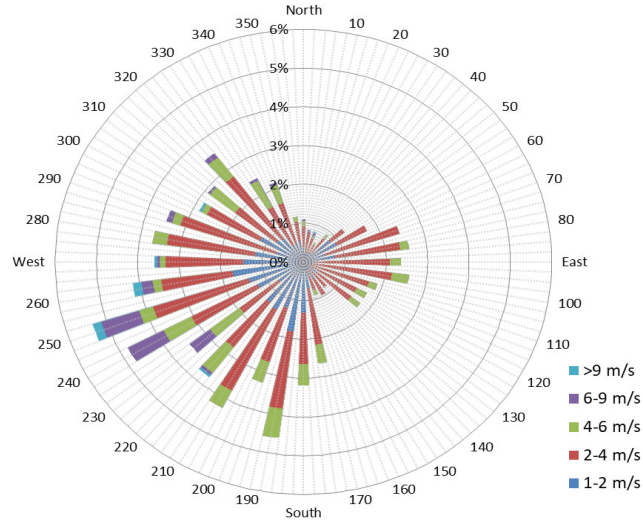
Agriculture and Agri-Food Canada / Agriculture et Agroalimentaire Canada



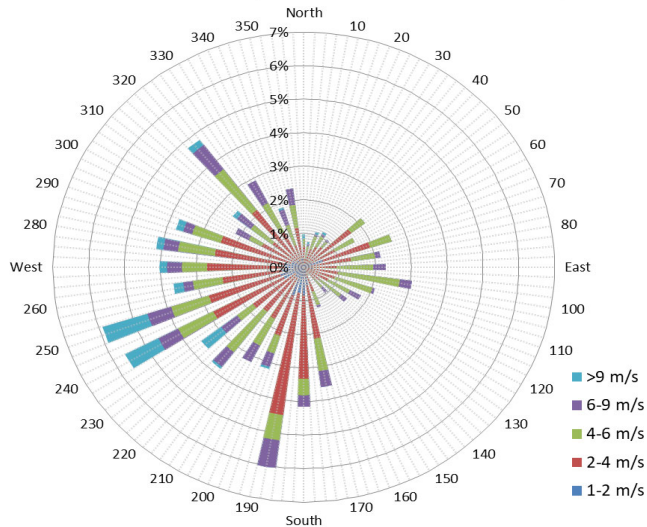
9 am Soil Moisture (3 depths) and Daily Precipitation for July 2024



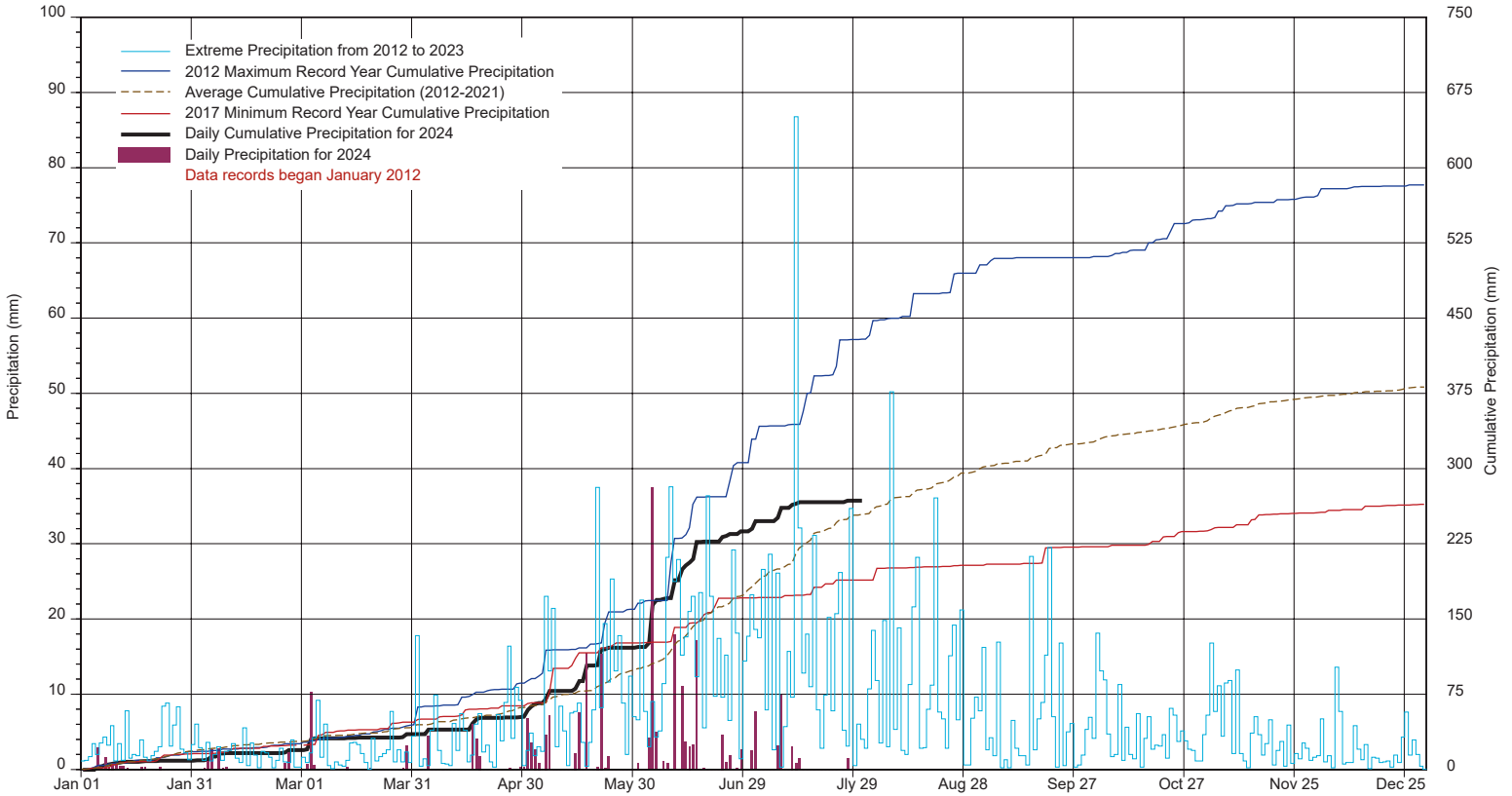
10 minute Average Wind Speed and Direction CLC July 2024



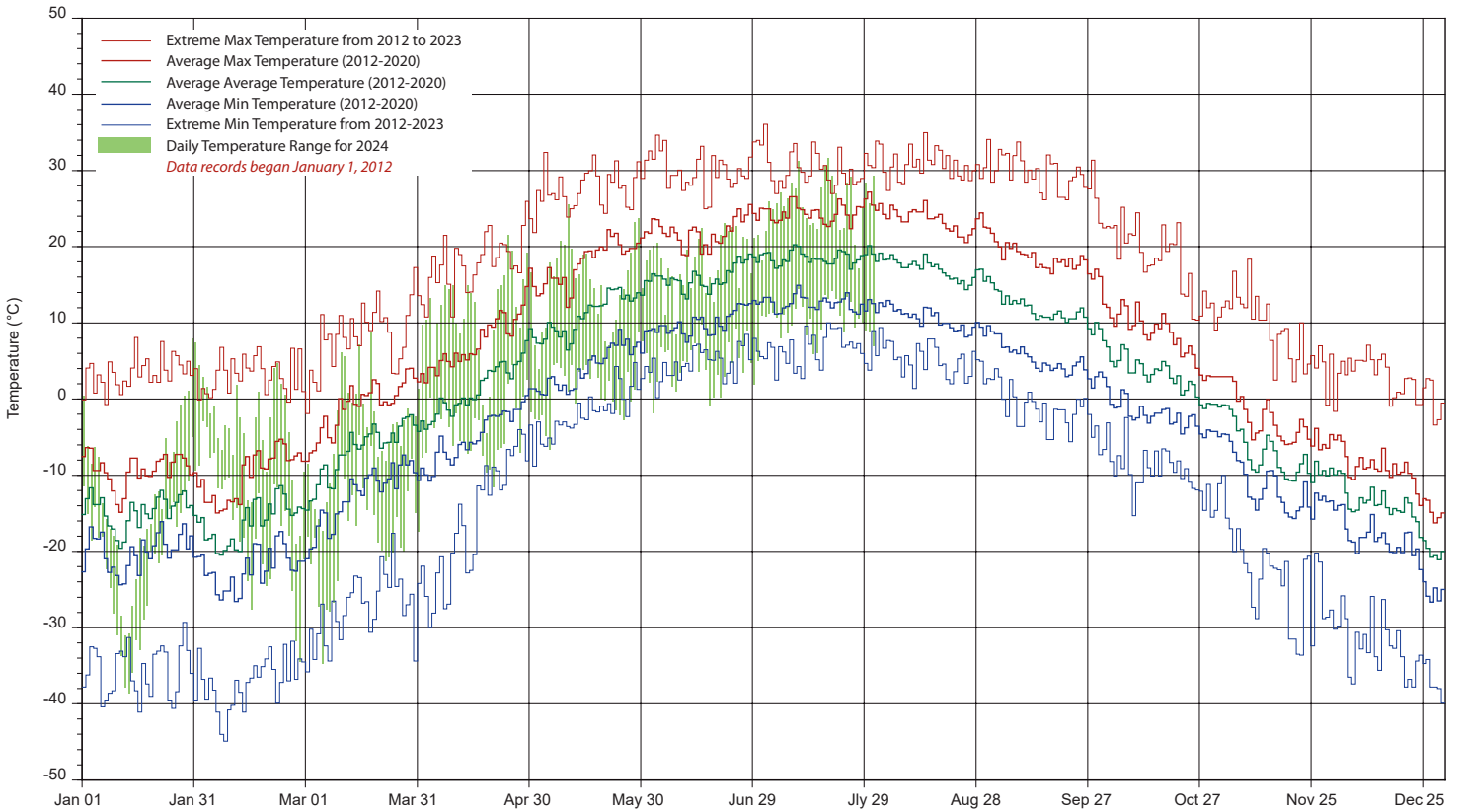
1/2 hr Maximum Wind Speed and Direction CLC July 2024



SRC's CLIMATE REFERENCE STATION at the Conservation Learning Centre 2024 PRECIPITATION AND AVERAGE



2024 TEMPERATURES AND AVERAGES



SRC proudly recognizes the following CRS supporters:

