



# SRC CLIMATE REFERENCE STATION DAILY DATA REPORT

## CONSERVATION LEARNING CENTRE

Saskatchewan 53.03°N 105.77°W Estab. 2011

Preliminary

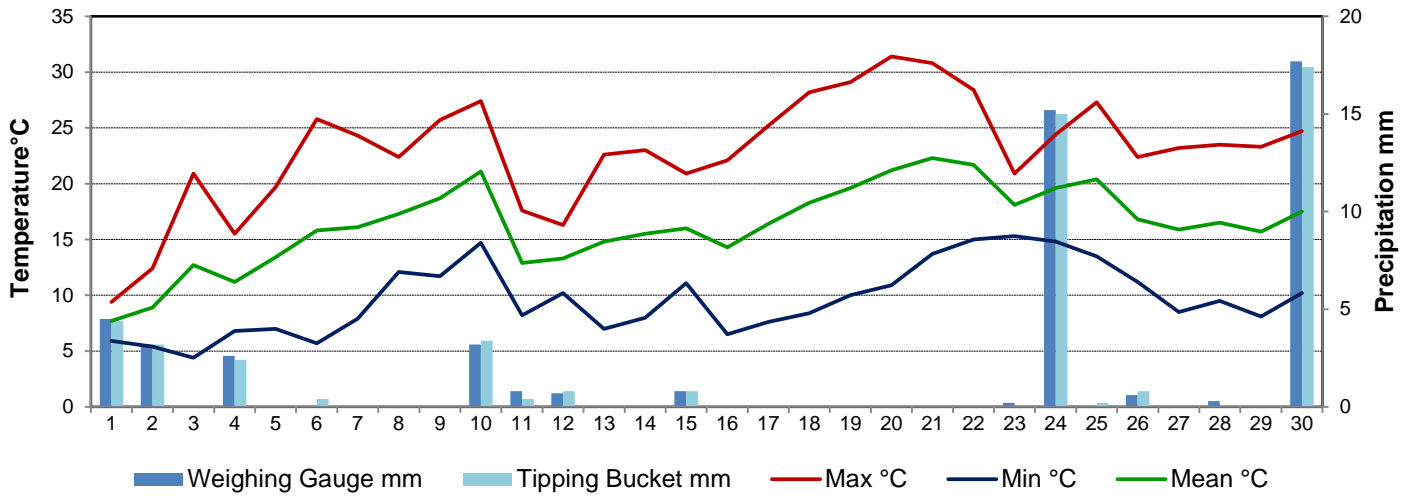
**June 2018**

Day	Temperature			Degree-days			Precipitation			Relative Humidity		Station Pressure <i>corrected to sea level</i>	
	Max	Min	Mean	Growing	Heating	Cooling	Weighing Gauge	Tipping Bucket	Notes	Max ½ hr Avg	Min ½ hr Avg	Max ½ hr Avg	Min ½ hr Avg
	°C	°C	°C	5°C base	18°C base	18°C base	mm	mm		%	%	mbar	mbar
1	9.4	5.9	7.7	2.7	10.3	0.0	4.5	4.4		93	77	1016	1011
2	12.4	5.4	8.9	3.9	9.1	0.0	3.2	3.2		93	63	1014	1010
3	20.9	4.4	12.7	7.7	5.3	0.0	0.0	0.0		92	25	1015	1013
4	15.5	6.8	11.2	6.2	6.8	0.0	2.6	2.4		84	65	1013	1003
5	19.7	7.0	13.4	8.4	4.6	0.0	0.0	0.0		89	29	1011	1004
6	25.8	5.7	15.8	10.8	2.2	0.0	0.0	0.4		93	17	1012	1007
7	24.3	7.9	16.1	11.1	1.9	0.0	0.0	0.0		87	24	1015	1012
8	22.4	12.1	17.3	12.3	0.7	0.0	0.0	0.0		71	53	1014	1013
9	25.7	11.7	18.7	13.7	0.0	0.7	0.0	0.0		87	46	1013	1004
10	27.4	14.7	21.1	16.1	0.0	3.1	3.2	3.4		91	44	1004	995
11	17.6	8.2	12.9	7.9	5.1	0.0	0.8	0.4		76	39	1002	999
12	16.3	10.2	13.3	8.3	4.7	0.0	0.7	0.8		73	44	1005	1000
13	22.6	7.0	14.8	9.8	3.2	0.0	0.0	0.0		83	28	1007	1003
14	23.0	8.0	15.5	10.5	2.5	0.0	0.0	0.0		85	42	1004	1002
15	20.9	11.1	16.0	11.0	2.0	0.0	0.8	0.8		82	33	1011	1003
16	22.1	6.5	14.3	9.3	3.7	0.0	0.0	0.0		82	29	1015	1011
17	25.2	7.6	16.4	11.4	1.6	0.0	0.0	0.0		84	23	1017	1015
18	28.2	8.4	18.3	13.3	0.0	0.3	0.0	0.0		90	21	1020	1018
19	29.1	10.0	19.6	14.6	0.0	1.6	0.0	0.0		86	22	1018	1015
20	31.4	10.9	21.2	16.2	0.0	3.2	0.0	0.0		85	21	1016	1013
21	30.8	13.7	22.3	17.3	0.0	4.3	0.0	0.0		81	21	1013	1009
22	28.4	15.0	21.7	16.7	0.0	3.7	0.0	0.0		82	33	1009	1006
23	20.9	15.3	18.1	13.1	0.0	0.1	0.2	0.0		91	71	1012	1006
24	24.4	14.8	19.6	14.6	0.0	1.6	15.2	15.0		91	62	1015	1012
25	27.3	13.5	20.4	15.4	0.0	2.4	0.0	0.2		93	43	1012	1004
26	22.4	11.2	16.8	11.8	1.2	0.0	0.6	0.8		82	31	1007	1001
27	23.2	8.5	15.9	10.9	2.1	0.0	0.0	0.0		81	24	1007	1003
28	23.5	9.5	16.5	11.5	1.5	0.0	0.3	0.0		71	31	1006	1004
29	23.3	8.1	15.7	10.7	2.3	0.0	0.0	0.0		90	31	1010	1006
30	24.7	10.2	17.5	12.5	0.5	0.0	17.7	17.4		87	32	1010	1005
Total				339.7	71.3	21.0	49.8	49.2					
Avg	<b>23.0</b>	<b>9.6</b>	<b>16.3</b>				123.6	Cumulative ppt					
Extreme	31.4	4.4					17.7	17.4		93	17	1020	995
Date	20	3					30	30		1	6	18	10

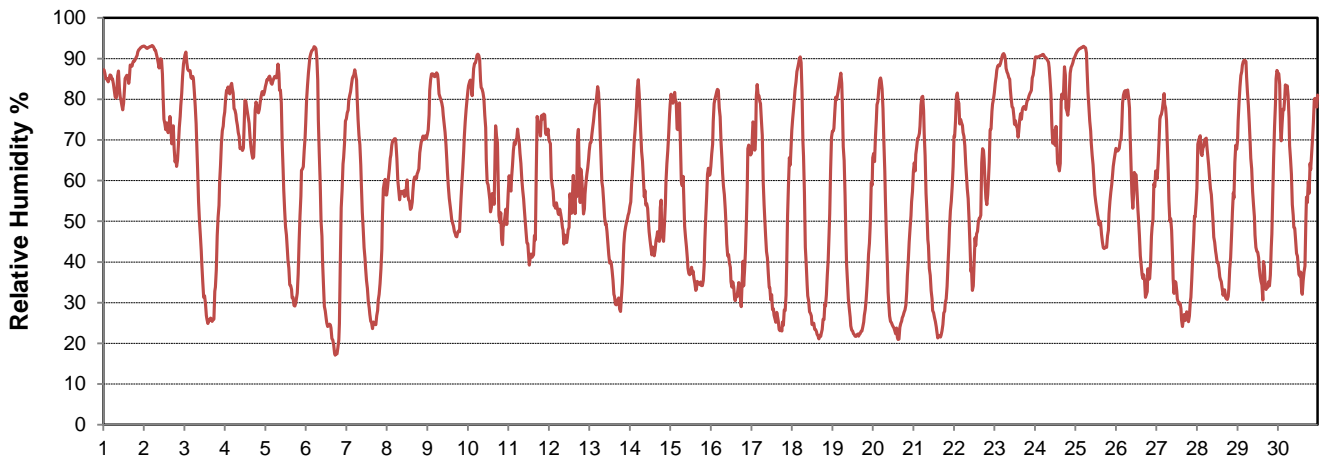
***SRC proudly recognizes the following CRS supporters:***



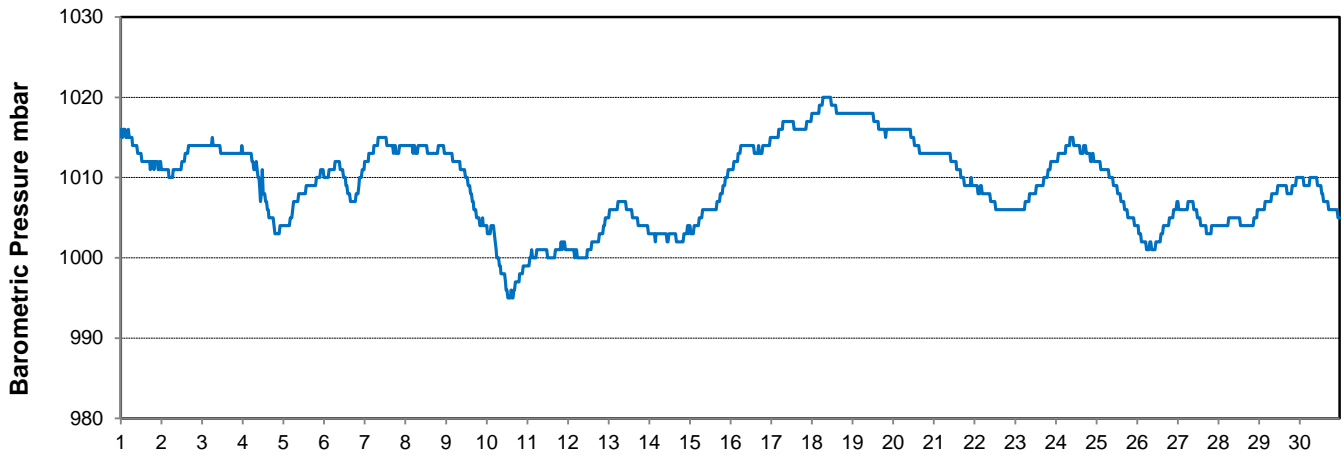
### Temperature and Precipitation for June 2018



### Relative Humidity for June 2018



### Barometric Pressure Corrected to Sea Level for June 2018





# SRC CLIMATE REFERENCE STATION DAILY DATA REPORT

## CONSERVATION LEARNING CENTRE

Saskatchewan 53.03°N 105.77°W Estab. 2011

Preliminary

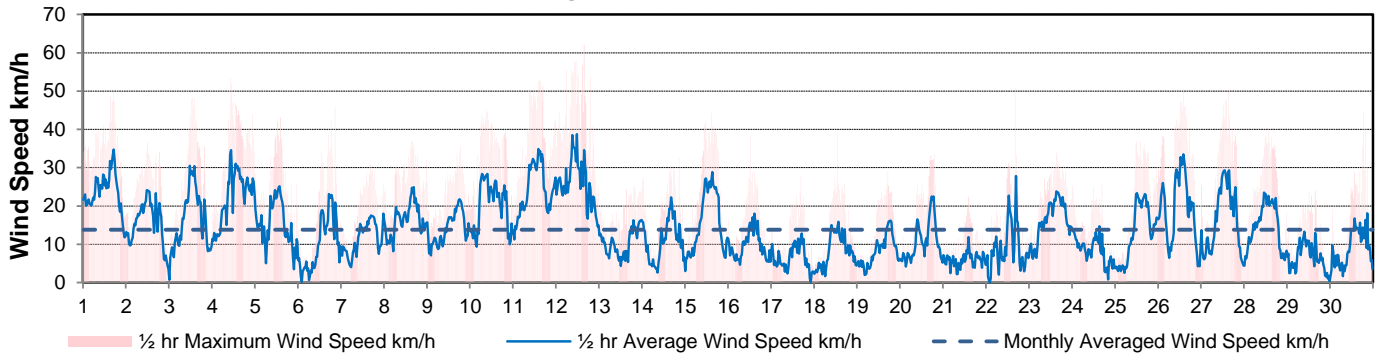
June 2018

Day	Wind Gust			Soil Temperatures at 0900hrs								Soil Moisture	Radiation		
	Max	Direction	Time	Surface	5 cm	10 cm	20 cm	50 cm	100 cm	150 cm	300 cm	0900hrs	Bright Sunshine	Global	Diffuse
	km/h			°C	°C	°C	°C	°C	°C	°C	°C	%	hours	MJ/m <sup>2</sup>	MJ/m <sup>2</sup>
1	50.0	ENE	17:01	7.5	9.0	9.0	9.0	7.0	4.5	2.5	2.5	33	0.0	4.6	4.1
2	36.7	NNW	12:24	8.0	8.0	7.5	7.5	5.5	3.5	2.0	1.0	35	3.1	9.1	7.3
3	48.2	NW	13:03	16.0	8.0	8.0	8.0	7.0	5.0	3.0	2.5	34	15.5	29.4	5.0
4	53.5	E	10:28	11.0	9.5	9.5	9.0	7.0	5.0	3.0	2.5	33	3.8	12.2	9.8
5	43.1	NW	14:10	11.5	9.5	9.0	9.0	7.0	5.0	3.0	2.5	34	9.3	24.4	6.3
6	45.6	NNE	20:45	15.5	10.0	10.0	9.5	7.5	5.0	3.5	2.5	33	14.3	25.4	8.8
7	31.0	E	16:35	16.5	10.5	10.5	10.0	8.0	5.5	3.5	3.0	33	14.5	28.9	6.0
8	37.0	E	15:33	17.0	12.0	12.0	11.0	8.5	5.5	3.5	3.0	32	9.0	20.4	11.1
9	35.8	ESE	18:46	15.0	12.5	12.5	11.5	8.5	5.5	4.0	3.0	32	9.4	22.9	5.7
10	45.0	ESE	9:20	20.0	14.5	14.0	12.0	9.0	6.0	4.0	2.5	33	7.5	18.5	9.7
11	53.1	SW	14:57	14.5	13.0	13.0	12.5	9.5	6.0	4.0	3.0	33	10.0	22.9	9.1
12	62.1	W	15:52	14.5	12.0	12.5	12.0	10.0	6.5	4.0	3.0	32	6.2	16.8	9.5
13	25.1	ESE	19:06	15.0	11.5	11.5	11.5	9.5	6.5	4.5	3.0	32	14.2	27.4	7.7
14	32.7	SSW	20:52	17.5	12.5	12.5	12.0	10.0	7.0	4.5	3.0	31	11.3	22.4	10.2
15	44.2	NNW	14:39	17.0	13.5	13.5	12.5	10.0	7.0	4.5	3.0	31	12.6	26.9	5.8
16	38.4	NNE	12:50	18.0	12.5	12.5	12.0	10.0	7.0	5.0	3.0	31	11.3	23.8	8.6
17	27.9	WNW	16:37	19.0	12.5	12.5	12.0	10.5	7.5	5.0	3.0	30	15.0	28.0	5.8
18	39.1	SW	13:21	22.5	13.0	13.0	12.5	10.5	7.5	5.0	3.0	30	14.6	28.7	6.4
19	29.3	SSW	17:28	22.5	14.0	14.0	13.0	10.5	7.5	5.0	3.0	29	15.9	29.7	5.7
20	33.3	W	19:22	24.0	14.5	14.5	13.5	11.0	7.5	5.5	3.0	29	14.9	29.3	5.3
21	22.4	SSW	14:09	23.5	15.5	15.5	14.5	11.5	8.0	5.5	3.0	29	11.0	23.0	11.7
22	50.7	E	16:37	23.5	16.5	16.0	15.0	12.0	8.0	5.5	3.5	29	9.3	19.2	8.7
23	34.0	ENE	15:04	18.5	16.0	16.0	14.5	12.0	8.5	5.5	3.0	28	0.8	10.8	9.1
24	25.5	W	16:56	19.0	16.0	15.5	14.5	12.0	8.5	6.0	3.5	28	5.0	15.6	9.7
25	36.9	SSE	14:07	21.5	16.0	16.0	15.0	12.5	9.0	6.0	3.5	33	14.1	26.9	6.5
26	50.5	SW	14:18	20.0	17.5	17.5	16.0	12.5	9.0	6.0	3.5	32	12.5	27.1	5.3
27	49.8	WSW	15:07	16.5	15.0	15.5	15.5	13.0	9.0	6.5	3.5	31	11.8	25.1	7.8
28	40.1	WSW	13:59	18.0	14.5	15.0	14.5	13.0	9.5	6.5	3.5	30	15.6	28.8	5.9
29	23.9	NNE	15:49	18.5	14.5	15.0	14.5	13.0	9.5	6.5	3.5	30	15.1	26.4	8.0
30	44.5	S	18:32	20.0	15.0	15.0	14.5	13.0	9.5	7.0	3.5	29	9.6	22.2	5.6
Total													317.2	676.8	226.2
Mean				17.4	13.0	13.0	12.3	10.0	7.0	4.7	3.0	31			
Extreme	62.1	W	15:52												
Date	12														

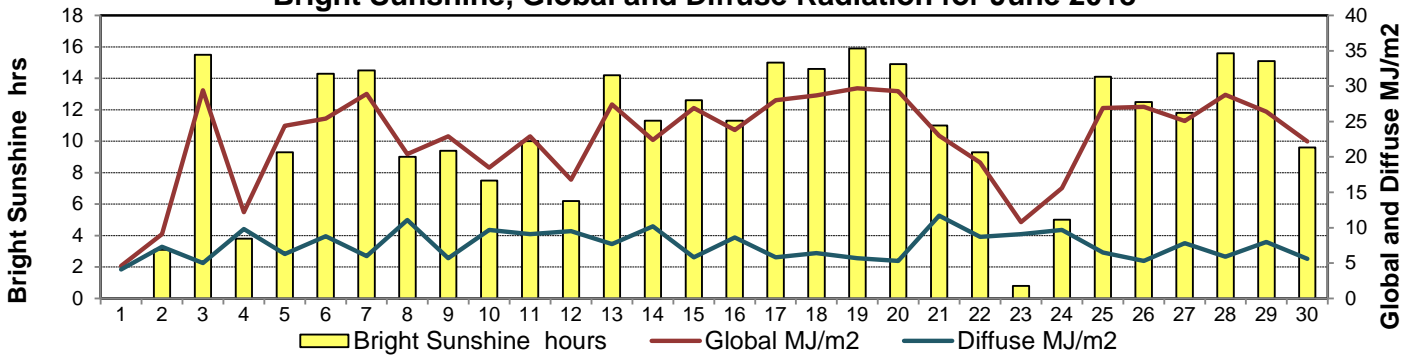
### GLOSSARY OF TERMS

<b>Degree-days</b>	<b>Radiation</b>
Tm Mean Temperature	Bright Sunshine is the unobstructed direct radiation from the sun, as opposed to the shading of a location by clouds or by other atmospheric obstructions.
Growing (Tm-5°C); if Tm ≤ 5°C then GDD = 0	
Heating (18°C-Tm); if Tm ≥ 18°C then HDD = 0	
Cooling (Tm-18°C); if Tm ≤ 18°C then CDD = 0	Diffuse is radiation reaching the earth's surface after having been scattered from the direct solar beam
T Trace of Precipitation	Global is the sum of the direct solar and diffuse radiation
<b>SOG</b> Depth of snow-on-the-ground	<b>Relative Humidity</b> The ratio of the air's water vapour content of its water vapour capacity which changes with temperature.
<b>Red Cell</b> no data available	<b>Air Pressure</b> The force exerted by the weight of a column of air above a given point
<b>Red Number</b> manual calculation	<b>Wind Gust</b> The daily highest instantaneous value recorded irrespective of direction and/or duration

### Wind Speed for June 2018

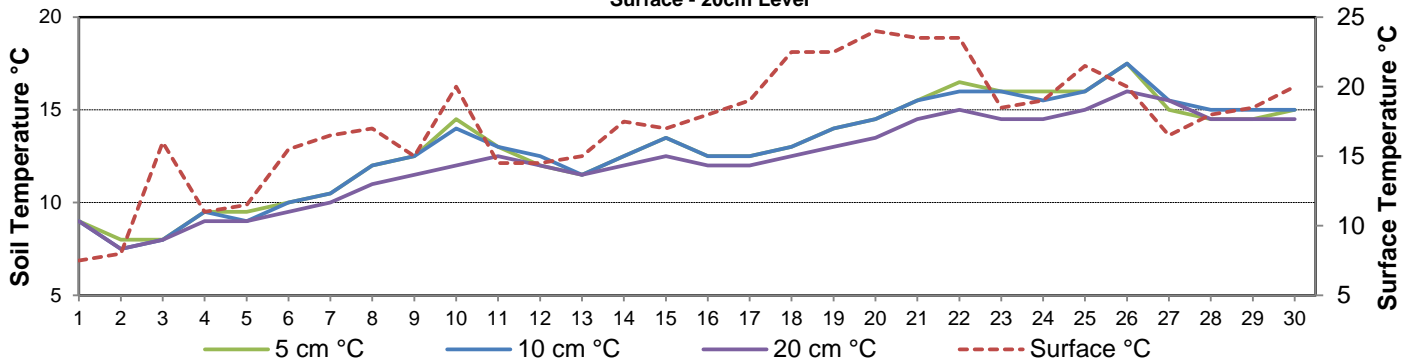


### Bright Sunshine, Global and Diffuse Radiation for June 2018



### Soil Temperatures for June 2018

Surface - 20cm Level



### Soil Temperatures for June 2018

50 - 300cm Level

