



SRC CLIMATE REFERENCE STATION DAILY DATA REPORT

CONSERVATION LEARNING CENTRE

Saskatchewan 53.03°N 105.77°W 451m asl Estab. 2011

Preliminary **June 2022**

Day	Temperature						Degree-days			Precipitation			Relative Humidity		Station Pressure <i>corrected to sea level</i>	
	Max	Avg Max	Min	Avg Min	Mean	Avg Mean	Growing	Heating	Cooling	Weighing Gauge	Tipping Bucket	Notes	Max ½ hr Avg	Min ½ hr Avg	Max ½ hr Avg	Min ½ hr Avg
	°C	2012-2021	°C	2012-2021	°C	2012-2021	5°C base	18°C base	18°C base	mm	mm		%	%	mbar	mbar
1	17.9	21.8	4.3	9.1	11.1	15.5	6.1	6.9	0.0	0.0	0.0		76	29	1016	1012
2	20.4	23.7	6.0	9.3	13.2	16.5	8.2	4.8	0.0	0.0	0.0		62	19	1014	1012
3	22.6	23.6	0.2	8.8	11.4	16.2	6.4	6.6	0.0	0.0	0.0		88	17	1014	1010
4	22.8	22.7	2.3	9.7	12.6	16.2	7.6	5.4	0.0	0.0	0.0		91	19	1014	1011
5	18.5	21.8	5.7	9.7	12.1	15.8	7.1	5.9	0.0	0.0	0.0		85	34	1015	1013
6	21.0	21.4	3.1	8.7	12.1	15.0	7.1	5.9	0.0	0.0	0.0		90	29	1017	1014
7	23.1	22.6	4.6	9.1	13.9	15.9	8.9	4.1	0.0	1.1	0.8		99	32	1016	1015
8	26.4	21.9	9.2	9.4	17.8	15.7	12.8	0.2	0.0	0.0	0.0		92	22	1016	1012
9	22.5	20.9	10.1	10.2	16.3	15.6	11.3	1.7	0.0	0.0	0.0		77	41	1012	1010
10	17.3	19.0	10.1	8.6	13.7	13.8	8.7	4.3	0.0	4.9	5.0		99	73	1010	1002
11	23.8	18.9	10.6	7.5	17.2	13.2	12.2	0.8	0.0	0.0	0.0		93	44	1004	1002
12	25.6	22.2	8.4	8.3	17.0	15.3	12.0	1.0	0.0	0.0	0.0		98	37	1004	1002
13	24.0	22.6	11.8	10.8	17.9	16.8	12.9	0.1	0.0	11.4	10.2		96	56	1003	999
14	16.2	22.0	8.5	10.5	12.4	16.3	7.4	5.6	0.0	13.2	12.6		98	90	999	994
15	16.4	19.1	6.4	10.8	11.4	15.0	6.4	6.6	0.0	0.2	0.2		100	71	1001	991
16	21.1	20.3	8.8	9.3	15.0	14.8	10.0	3.0	0.0	1.2	1.6		100	63	1016	1001
17	23.6	19.1	11.7	8.4	17.7	13.8	12.7	0.3	0.0	0.0	0.0		97	56	1017	1009
18	32.0	21.7	16.4	8.5	24.2	15.2	19.2	0.0	6.2	0.0	0.0		82	47	1008	999
19	21.9	20.7	16.5	10.8	19.2	15.8	14.2	0.0	1.2	0.0	0.0		93	62	1009	1003
20	23.9	20.5	14.2	9.6	19.1	15.1	14.1	0.0	1.1	23.0	20.0		98	54	1012	1008
21	22.4	21.4	12.9	9.1	17.7	15.3	12.7	0.3	0.0	5.0	4.8		99	46	1016	1011
22	27.2	22.8	9.7	10.9	18.5	16.9	13.5	0.0	0.5	0.0	0.2		98	46	1015	1005
23	23.0	22.1	12.4	11.2	17.7	16.7	12.7	0.3	0.0	9.6	8.4		100	66	1008	1006
24	16.2	24.0	9.3	11.7	12.8	17.9	7.8	5.2	0.0	0.9	0.8		97	70	1013	1006
25	20.6	25.0	8.8	12.6	14.7	18.8	9.7	3.3	0.0	5.2	5.2		98	51	1020	1013
26	24.6	23.3	9.2	12.5	16.9	17.9	11.9	1.1	0.0	0.0	0.0		97	37	1021	1016
27	20.7	24.2	11.3	12.4	16.0	18.3	11.0	2.0	0.0	0.0	0.0		94	45	1021	1016
28	21.8	25.6	5.2	12.6	13.5	19.1	8.5	4.5	0.0	0.0	0.0		99	37	1022	1013
29	19.3	24.4	12.0	13.0	15.7	18.7	10.7	2.3	0.0	0.0	0.0		91	64	1013	1004
30	21.4	23.5	8.8	12.5	15.1	18.0	10.1	2.9	0.0	0.0	0.0		100	37	1014	1009
Total							313.9	85.1	9.0	75.7	69.8					
Avg	21.9	22.1	9.0	10.2	15.5	16.2	Monthly 2012 - 2021 Average			77.6	2012-2021 Average					
Extreme	32.0	34.7	0.2	2.0			334.8	74.0	18.8	0.0	2022 Cumulative ppt		100	17	1022	991
Date	18	2021	3	2021						0.0	Cumulative Average		15	3	28	15

SRC proudly recognizes the following CRS supporters:

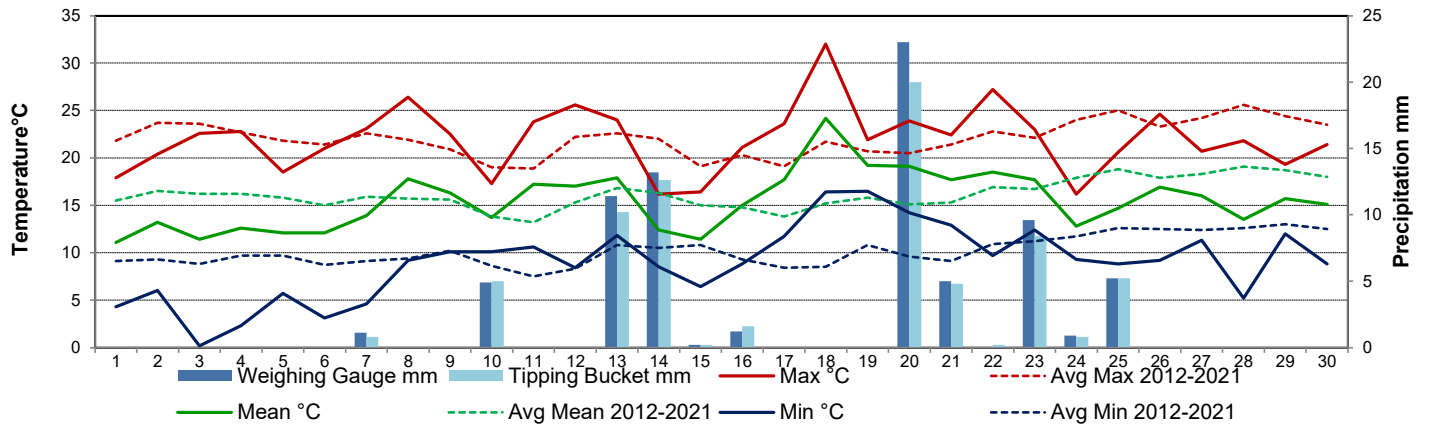


Agriculture and Agri-Food Canada

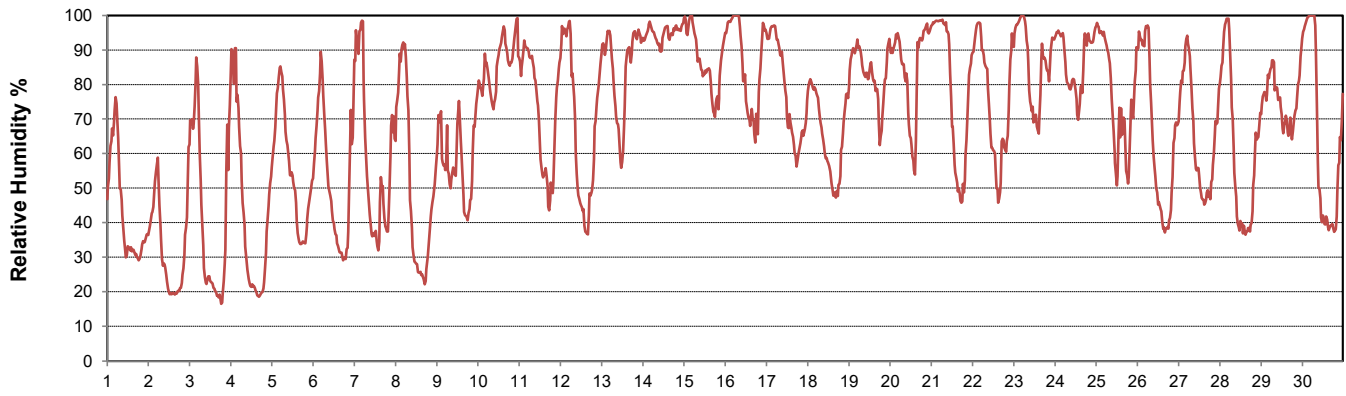
Agriculture et Agroalimentaire Canada



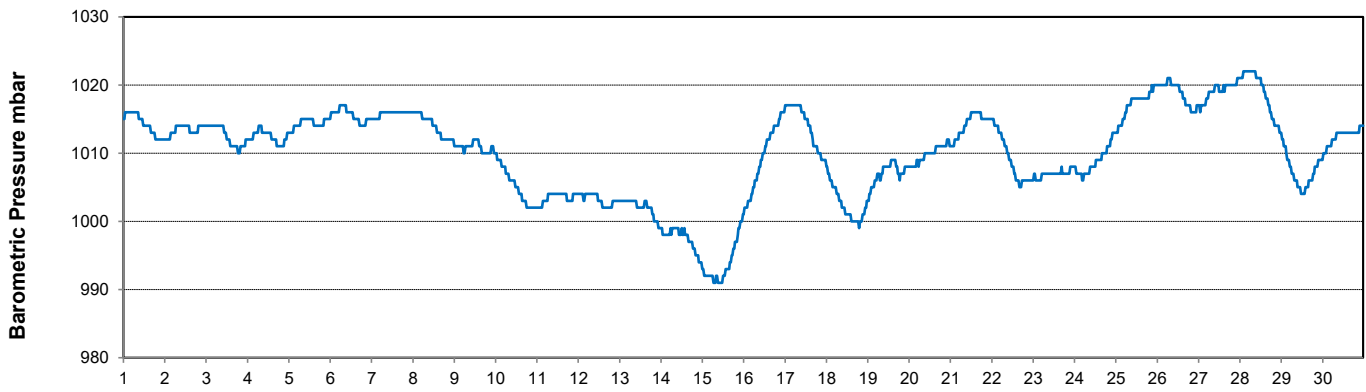
Temperature and Precipitation for June 2022



Relative Humidity for June 2022



Barometric Pressure Corrected to Sea Level for June 2022





SRC CLIMATE REFERENCE STATION DAILY DATA REPORT

CONSERVATION LEARNING CENTRE

Saskatchewan 53.03°N 105.77°W 451m asl Estab. 2011

Preliminary

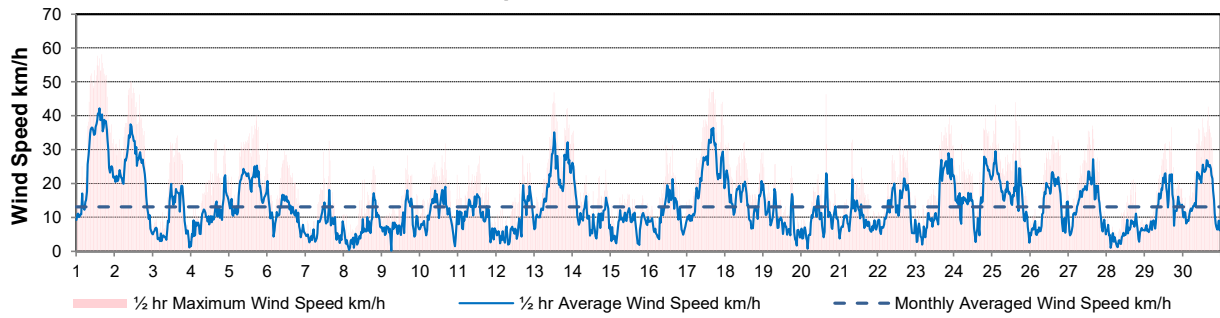
June 2022

Day	Wind Gust			Wind Speed (10 meters) Daily Average	Soil Temperatures at 0900hrs								Radiation					
	Max	Direction	Time		Surface	5 cm	10 cm	20 cm	50 cm	100 cm	150 cm	300 cm	Bright Sunshine	Possible	% Possible	Global	Diffuse	
	km/h				°C	°C	°C	°C	°C	°C	°C	°C	hours	hours		MJ/m ²	MJ/m ²	
1	58.1	NE	16:05	27.2	13.0	9.0	9.5	9.5	8.0	6.0	4.5	3.5	12.7	16.6	76.5	25.5	8.8	
2	50.3	NNW	10:30	23.6	13.5	9.5	10.0	9.5	8.0	6.0	4.5	3.5	14.9	16.6	89.6	30.6	4.3	
3	34.1	NNW	15:54	9.7	15.0	9.0	9.5	9.5	8.5	6.0	4.5	3.5	16.2	16.7	97.2	30.2	3.8	
4	32.9	NE	15:36	10.6	15.5	9.5	10.0	9.5	8.5	6.5	4.5	3.5	16.2	16.7	97.1	30.4	3.7	
5	40.2	ENE	17:46	18.6	13.0	10.5	11.0	10.5	8.5	6.5	5.0	3.5	13.4	16.7	80.1	25.0	7.9	
6	31.9	SE	0:08	11.3	13.5	10.5	11.0	10.5	9.0	6.5	5.0	3.5	16.0	16.8	95.5	30.1	5.3	
7	32.5	NNE	15:22	7.3	18.5	11.0	11.5	10.5	9.0	6.5	5.0	3.5	9.9	16.8	59.0	18.2	8.1	
8	25.1	E	19:15	6.2	17.5	11.5	12.0	11.0	9.0	7.0	5.0	3.5	10.9	16.8	64.9	24.7	9.0	
9	28.3	S	16:17	1.1	17.5	12.5	12.5	11.5	9.5	7.0	5.0	3.5	6.3	16.8	37.5	14.4	9.5	
10	31.8	SE	16:06	0.0	15.5	12.0	12.5	11.5	9.5	7.0	5.5	3.5	2.0	16.8	11.9	7.7	6.8	
11	28.2	NW	13:30	0.0	14.0	11.5	12.0	11.0	9.5	7.0	5.5	3.5	8.3	16.9	49.3	17.8	11.4	
12	28.5	SSW	16:43	0.0	17.0	12.0	12.5	11.5	10.0	7.5	5.5	3.5	7.0	16.9	41.5	18.9	9.2	
13	46.9	E	12:37	17.1	19.5	13.0	13.5	12.5	10.0	7.5	5.5	3.5	6.3	16.9	37.3	12.4	7.8	
14	35.5	E	0:44	11.0	14.0	13.5	13.5	12.0	9.5	7.5	5.5	3.5	0.0	16.9	0.0	3.1	2.7	
15	16.9	S	11:10	8.2	11.5	10.5	11.0	11.0	9.5	7.0	5.5	3.0	1.7	16.9	10.1	10.6	9.2	
16	31.4	NW	15:19	10.7	14.5	11.5	12.0	11.5	10.0	7.5	6.0	3.5	5.5	16.9	32.5	18.2	11.6	
17	48.0	ENE	14:59	22.4	16.0	13.0	13.5	12.5	10.5	8.0	6.0	4.0	9.6	16.9	56.7	24.0	11.6	
18	32.2	E	12:59	15.4	21.5	15.0	15.0	13.5	11.0	8.0	6.0	4.0	14.1	16.9	83.3	27.1	7.5	
19	29.2	NW	0:07	9.2	19.0	16.5	17.0	15.0	11.5	8.5	6.5	4.0	0.9	16.9	5.3	8.0	7.1	
20	46.3	NW	15:43	9.5	18.5	15.5	16.0	14.5	12.0	8.5	6.5	4.0	0.4	16.9	2.4	10.1	8.9	
21	32.9	NNE	8:06	9.4	13.0	15.0	15.5	14.0	12.0	8.5	6.5	3.5	10.0	16.9	59.0	21.6	7.3	
22	31.1	WSW	14:17	12.8	17.0	14.5	15.5	14.5	12.5	9.0	6.5	4.0	11.1	16.9	65.6	22.2	11.7	
23	39.5	E	21:17	13.9	17.5	15.5	16.5	15.0	12.5	9.5	7.0	4.0	4.9	16.9	28.9	15.5	10.7	
24	39.3	N	20:13	15.8	14.0	15.0	15.5	14.5	12.5	9.0	7.0	4.0	3.6	16.9	21.3	11.3	8.2	
25	44.0	NNW	15:21	17.5	12.5	13.0	14.0	13.5	12.0	9.0	7.0	3.5	9.1	16.9	53.8	20.7	7.7	
26	33.9	SW	14:29	13.3	18.0	13.5	14.5	13.5	12.5	10.0	7.0	4.0	13.1	16.9	77.5	28.8	5.1	
27	37.0	WNW	15:18	14.4	16.0	15.0	15.5	14.5	13.0	10.0	7.5	4.5	11.5	16.9	68.0	24.7	9.2	
28	21.2	S	17:24	5.3	15.5	13.5	15.0	14.0	13.0	10.0	7.5	4.5	15.4	16.9	91.2	30.3	4.6	
29	36.6	NNE	17:10	13.5	16.5	15.0	16.0	14.5	13.0	10.0	7.5	4.5	2.8	16.9	16.6	10.5	7.6	
30	42.6	WNW	16:06	16.3	16.0	14.0	15.0	14.0	13.0	10.0	7.5	4.5	13.3	16.9	78.9	28.5	5.8	
Total																		
Mean					15.8	12.7	13.3	12.4	10.6	7.9	5.9	3.8	267.1	505.4	52.8	601.1	232.1	
Extreme Date	58.1	NE	16:05															

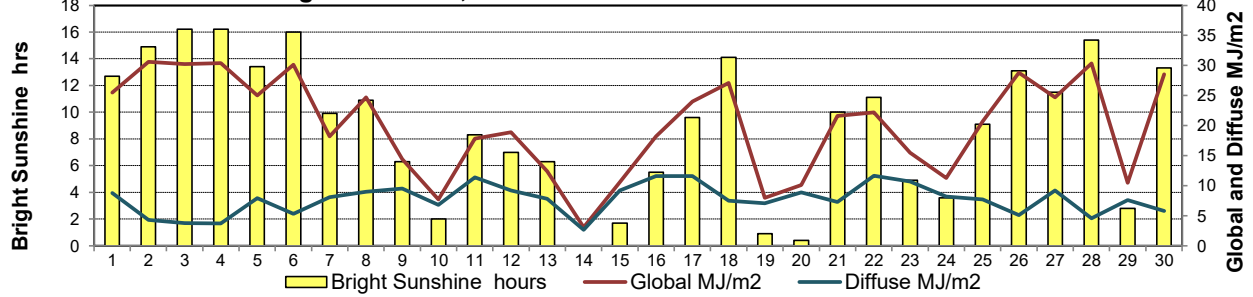
GLOSSARY OF TERMS

Degree-days	Radiation
T _m Mean Temperature	Bright Sunshine is the unobstructed direct radiation from the sun, as opposed to the shading of a location by clouds or by other atmospheric obstructions.
Growing (T _m -5°C); if T _m ≤ 5°C then GDD = 0	
Heating (18°C-T _m); if T _m ≥ 18°C then HDD = 0	Diffuse is radiation reaching the earth's surface after having been scattered from the direct solar beam
Cooling (T _m -18°C); if T _m ≤ 18°C then CDD = 0	Global is the sum of the direct solar and diffuse radiation
T Trace of Precipitation	Relative Humidity The ratio of the air's water vapour content to its water vapour capacity which changes with temperature.
SOG Depth of snow-on-the-ground	
Red Cell no data available	Air Pressure The force exerted by the weight of a column of air above a given point
Red Number manual calculation	Wind Gust The daily highest instantaneous value recorded irrespective of direction and/or duration

Wind Speed for June 2022

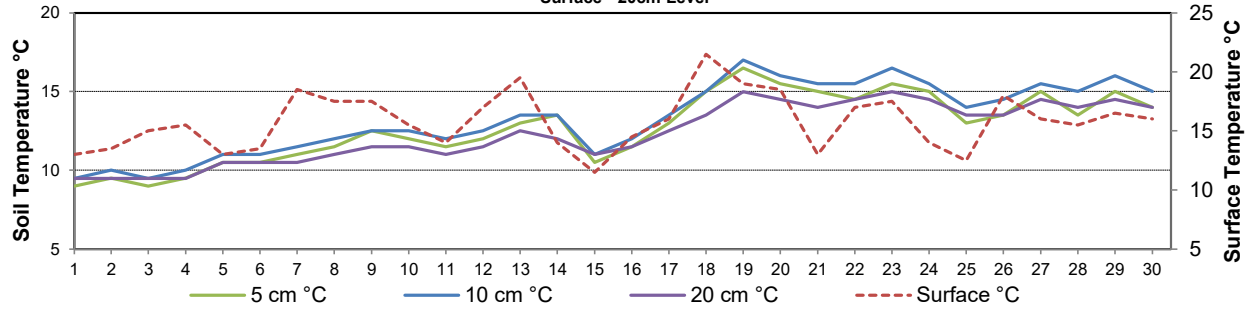


Bright Sunshine, Global and Diffuse Radiation for June 2022



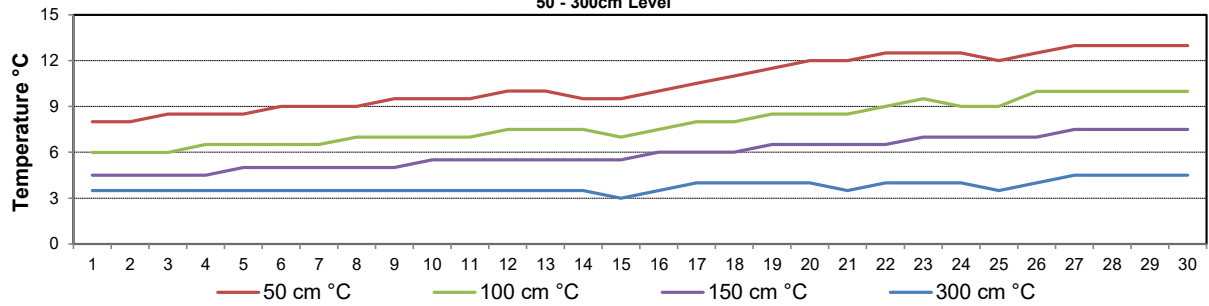
Soil Temperatures for June 2022

Surface - 20cm Level



Soil Temperatures for June 2022

50 - 300cm Level





SRC CLIMATE REFERENCE STATION DAILY DATA REPORT

CONSERVATION LEARNING CENTRE

Saskatchewan 53.03°N 105.77°W 451m asl Estab. 2011

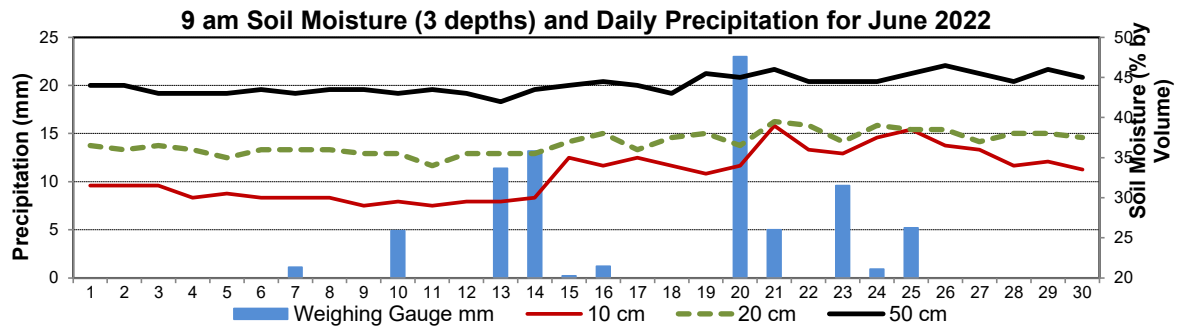
Preliminary

June 2022

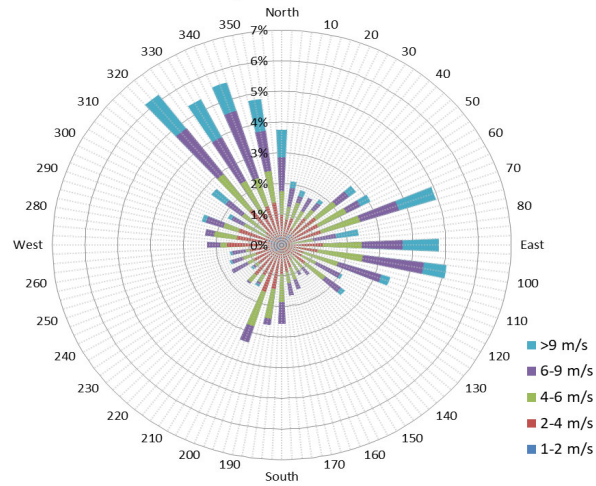
Day	2 meter Wind Speed			Soil Moisture at 0900 hrs (rounded to the 0.5%)									
	Daily Average	Max ½ hr Avg	½ hr Extreme Max	10 cm	20 cm	50 cm							
	km/h	km/h	km/h	% by volume (soil type is Clay Loam)									
1	21.0	32.1	45.4	31.5	36.5	44.0							
2	18.0	28.5	40.8	31.5	36.0	44.0							
3	8.0	16.3	31.6	31.5	36.5	43.0							
4	8.0	17.3	26.6	30.0	36.0	43.0							
5	14.0	20.1	31.2	30.5	35.0	43.0							
6	8.0	14.6	23.1	30.0	36.0	43.5							
7	5.0	13.0	24.8	30.0	36.0	43.0							
8	5.0	12.6	21.0	30.0	36.0	43.5							
9	6.0	14.2	20.8	29.0	35.5	43.5							
10	8.0	13.1	22.7	29.5	35.5	43.0							
11	8.0	13.7	22.9	29.0	34.0	43.5							
12	5.0	15.6	27.7	29.5	35.5	43.0							
13	15.0	26.4	36.2	29.5	35.5	42.0							
14	9.0	18.9	26.6	30.0	35.5	43.5							
15	6.0	10.6	15.1	35.0	37.0	44.0							
16	8.0	16.4	24.1	34.0	38.0	44.5							
17	16.0	27.6	39.8	35.0	36.0	44.0							
18	10.0	17.5	25.2	34.0	37.5	43.0							
19	5.0	14.8	23.7	33.0	38.0	45.5							
20	5.0	17.6	32.1	34.0	36.5	45.0							
21	7.0	15.7	24.8	39.0	39.5	46.0							
22	9.0	16.8	24.7	36.0	39.0	44.5							
23	10.0	22.2	28.9	35.5	37.0	44.5							
24	12.0	21.3	30.2	37.5	39.0	44.5							
25	14.0	22.6	33.9	38.5	38.5	45.5							
26	9.0	17.7	27.7	36.5	38.5	46.5							
27	10.0	20.4	32.9	36.0	37.0	45.5							
28	2.0	8.0	19.7	34.0	38.0	44.5							
29	9.0	16.9	26.8	34.5	38.0	46.0							
30	11.0	20.1	30.2	33.5	37.5	45.0							
Total													
Mean				33	37	44.1							
Extreme	21.0	32.1	45.4	39	39.5	46.5							
Date	0	0	0	0	0	0							

SRC proudly recognizes the following CRS supporters:

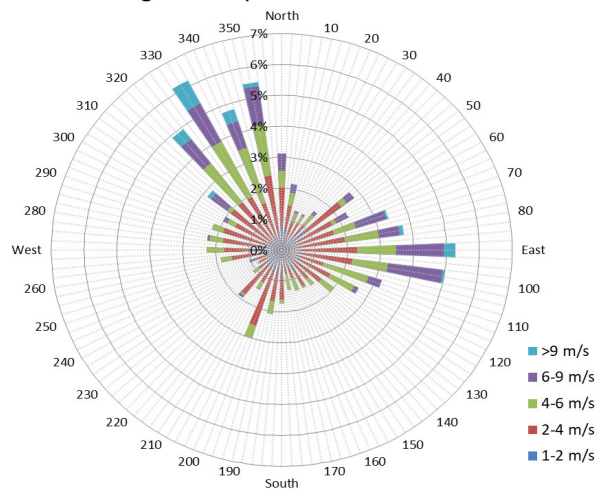




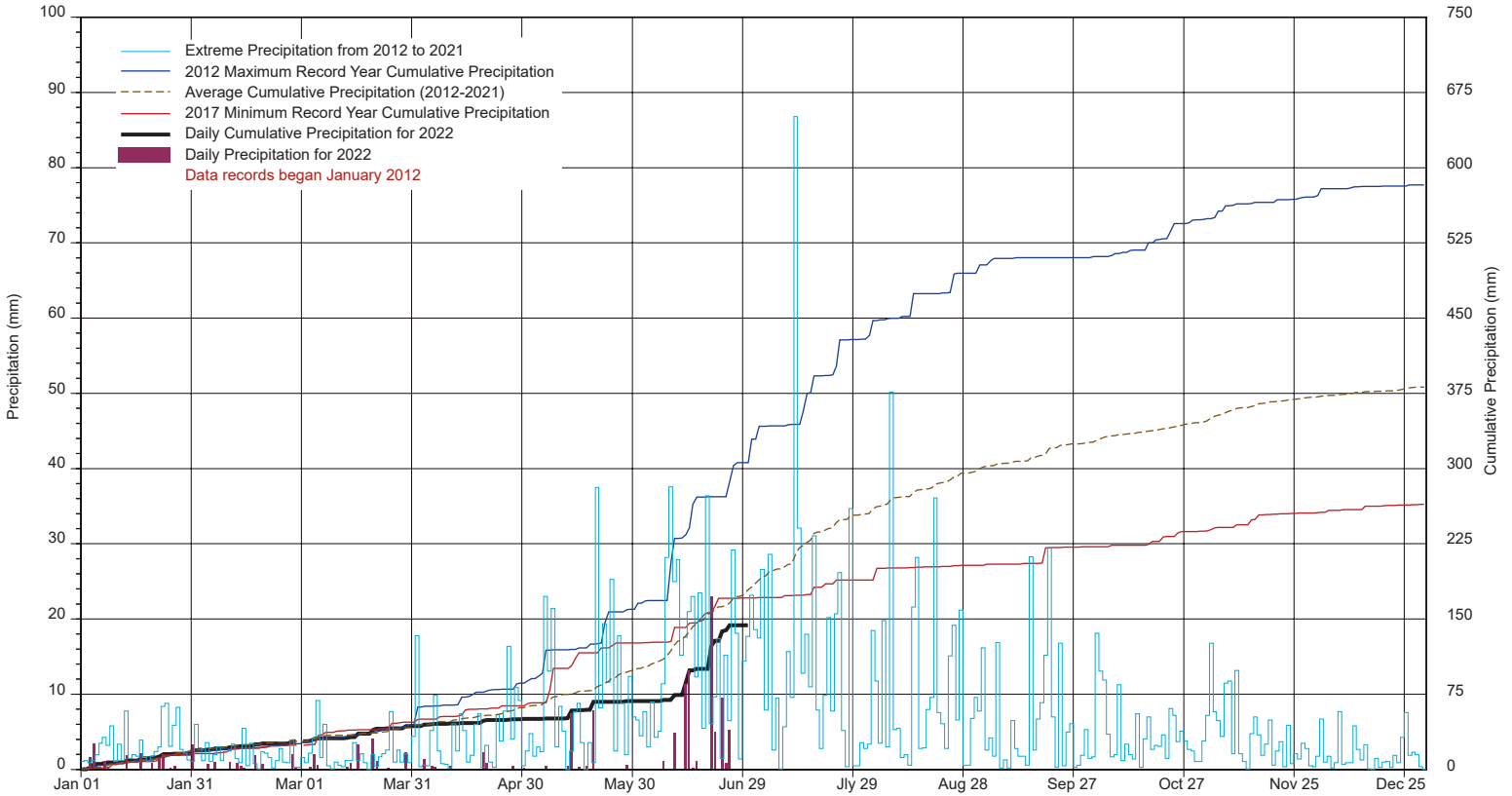
1/2 hr Maximum Wind Speed and Direction CLC June 2022



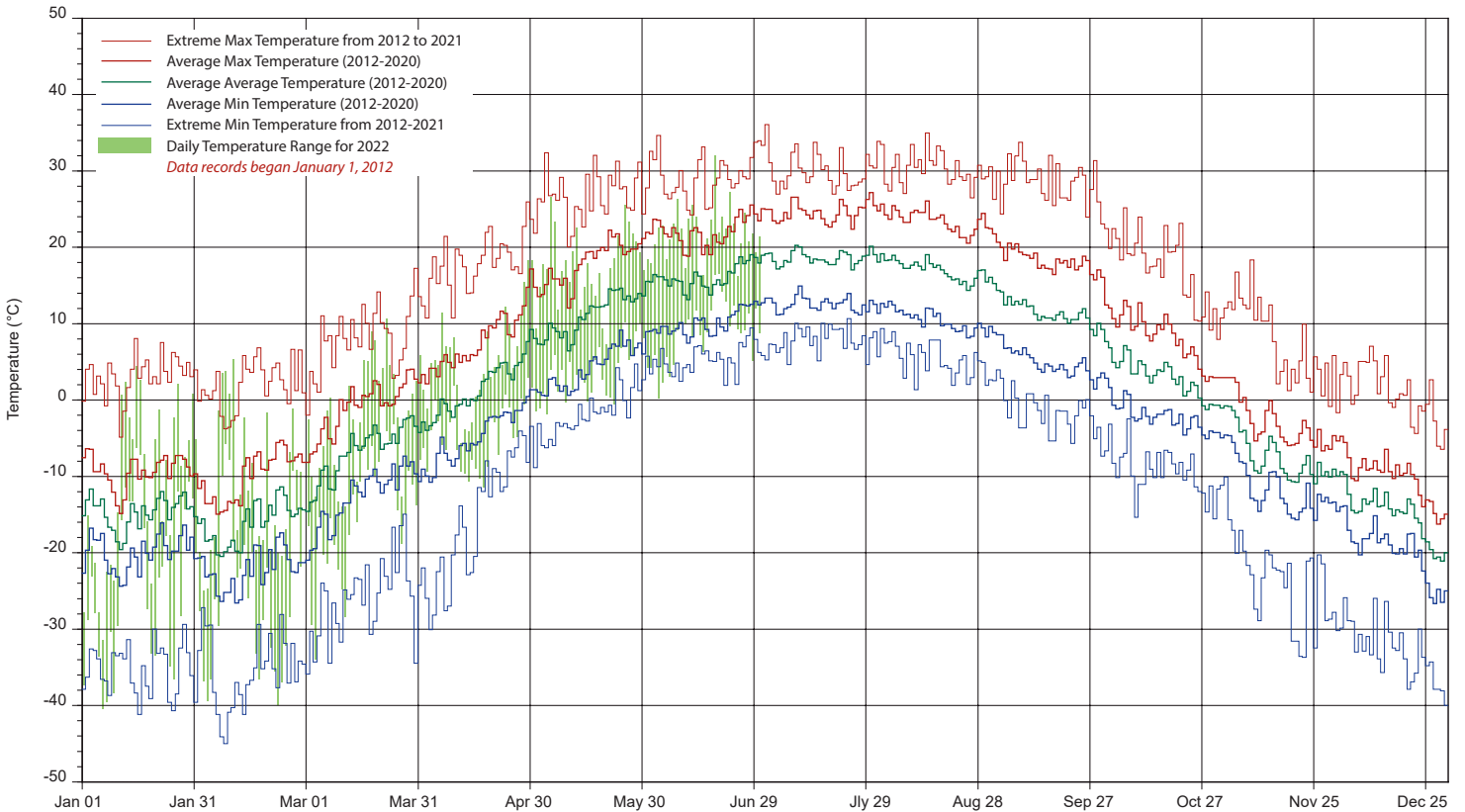
10 minute Average Wind Speed and Direction CLC June 2022



SRC's CLIMATE REFERENCE STATION at the Conservation Learning Centre 2022 PRECIPITATION AND AVERAGE



2022 TEMPERATURES AND AVERAGES



SRC proudly recognizes the following CRS supporters:

