



# SRC CLIMATE REFERENCE STATION DAILY DATA REPORT

## CONSERVATION LEARNING CENTRE

Saskatchewan 53.03°N 105.77°W 451m asl Estab. 2011

Preliminary **June 2024**

Day	Temperature (HMP155A)						Degree-days			Precipitation			Relative Humidity (HMP115A)		Station Pressure <i>corrected to sea level</i>	
	Max	Avg Max	Min	Avg Min	Mean	Avg Mean	Growing	Heating	Cooling	Geonor all-season ppt Gauge	Tipping Bucket	Notes	Max ½ hr Avg	Min ½ hr Avg	Max ½ hr Avg	Min ½ hr Avg
	°C	2012-2021	°C	2012-2021	°C	2012-2021	5°C base	18°C base	18°C base	mm	mm		%	%	mbar	mbar
1	19.6	21.8	2.1	9.1	10.9	15.5	5.9	7.1	0.0	0.0	0.0		77	26	1005	1001
2	20.1	23.7	-1.8	9.3	9.2	16.5	4.2	8.8	0.0	0.0	0.0		93	31	1006	1004
3	20.5	23.6	2.3	8.8	11.4	16.2	6.4	6.6	0.0	4.2	4.4		95	40	1004	994
4	18.6	22.7	6.9	9.7	12.8	16.2	7.8	5.2	0.0	37.5	36.4		97	67	994	989
5	11.1	21.8	6.2	9.7	8.7	15.8	3.7	9.3	0.0	5.0	5.6		98	72	1005	989
6	17.2	21.4	6.5	8.7	11.9	15.0	6.9	6.1	0.0	0.0	0.0		86	46	1007	1005
7	16.1	22.6	1.7	9.1	8.9	15.9	3.9	9.1	0.0	1.1	1.0		87	41	1009	1004
8	8.4	21.9	1.0	9.4	4.7	15.7	0.0	13.3	0.0	0.8	0.8		92	73	1020	1009
9	16.4	20.9	3.5	10.2	10.0	15.6	5.0	8.0	0.0	0.0	0.0		96	38	1023	1018
10	15.0	19.0	5.1	8.6	10.1	13.8	5.1	7.9	0.0	17.9	18.6		97	54	1018	1006
11	19.6	18.9	4.9	7.5	12.3	13.2	7.3	5.7	0.0	0.0	0.0		99	41	1005	1002
12	14.6	22.2	6.5	8.3	10.6	15.3	5.6	7.4	0.0	11.0	11.6		96	74	1005	1000
13	18.7	22.6	7.3	10.8	13.0	16.8	8.0	5.0	0.0	3.7	3.8		99	60	1014	1005
14	21.0	22.0	3.6	10.5	12.3	16.3	7.3	5.7	0.0	3.1	3.8		99	47	1014	1006
15	22.4	19.1	9.8	10.8	16.1	15.0	11.1	1.9	0.0	3.3	4.4		87	45	1006	998
16	13.9	20.3	3.8	9.3	8.9	14.8	3.9	9.1	0.0	17.1	17.4		96	43	1004	987
17	15.9	19.1	-0.8	8.4	7.6	13.8	2.6	10.4	0.0	0.0	0.0		96	31	1007	1004
18	12.8	21.7	0.3	8.5	6.6	15.2	1.6	11.4	0.0	0.2	0.0		85	45	1016	1007
19	16.9	20.7	3.2	10.8	10.1	15.8	5.1	7.9	0.0	0.0	0.0		88	33	1020	1016
20	21.6	20.5	0.3	9.6	11.0	15.1	6.0	7.0	0.0	0.0	0.0		95	26	1022	1020
21	23.1	21.4	2.9	9.1	13.0	15.3	8.0	5.0	0.0	0.0	0.0		98	30	1021	1015
22	22.1	22.8	7.5	10.9	14.8	16.9	9.8	3.2	0.0	0.0	0.0		97	47	1015	1011
23	22.6	22.1	4.8	11.2	13.7	16.7	8.7	4.3	0.0	4.7	5.0		98	46	1011	999
24	22.7	24.0	9.3	11.7	16.0	17.9	11.0	2.0	0.0	1.0	1.0		95	39	1004	996
25	14.6	25.0	5.4	12.6	10.0	18.8	5.0	8.0	0.0	1.9	2.0		95	58	1019	1004
26	21.3	23.3	3.5	12.5	12.4	17.9	7.4	5.6	0.0	0.0	0.0		96	44	1019	1012
27	21.1	24.2	9.1	12.4	15.1	18.3	10.1	2.9	0.0	0.2	0.2		97	47	1012	1004
28	16.6	25.6	4.8	12.6	10.7	19.1	5.7	7.3	0.0	2.6	2.8		91	44	1018	1003
29	21.2	24.4	2.0	13.0	11.6	18.7	6.6	6.4	0.0	0.0	0.0		97	43	1021	1018
30	21.5	23.5	5.0	12.5	13.3	18.0	8.3	4.7	0.0	0.0	0.0		96	44	1021	1013
Total							188.0	202.3	0.0	115.3	118.8					
Avg	18.2	22.1	4.2	10.2	11.3	16.2	Monthly 2012 - 2021 Average			77.6	2012-2021 Average					
Extreme	23.1	34.7	-1.8	2.0			334.8	74.0	18.8	237.7	2024 Cumulative ppt		99	26	1023	987
Date	21	2021	2	2021						177.3	Cumulative Average		11	1	9	16

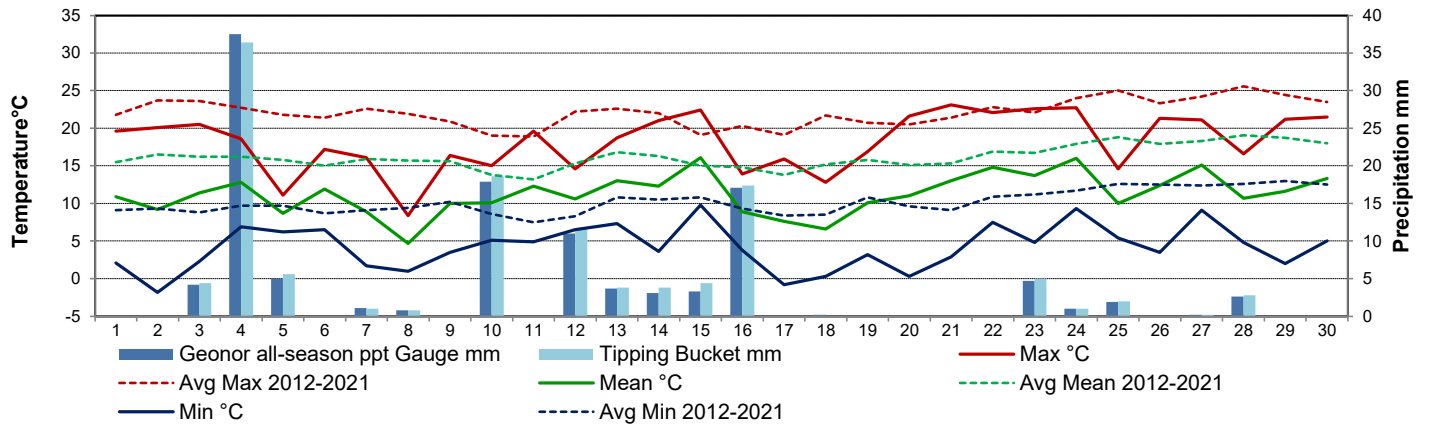
Note: Red numbers indicate manual calculation; Red cell indicate data not available

Precipitation is measured precipitation. It has not been corrected for wind speed.

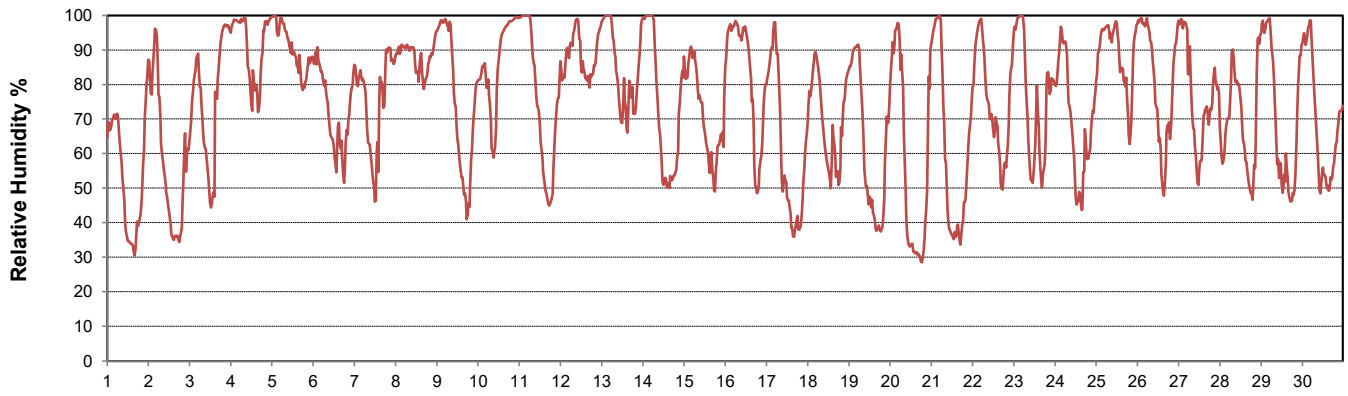
**SRC proudly recognizes the following CRS supporters:**



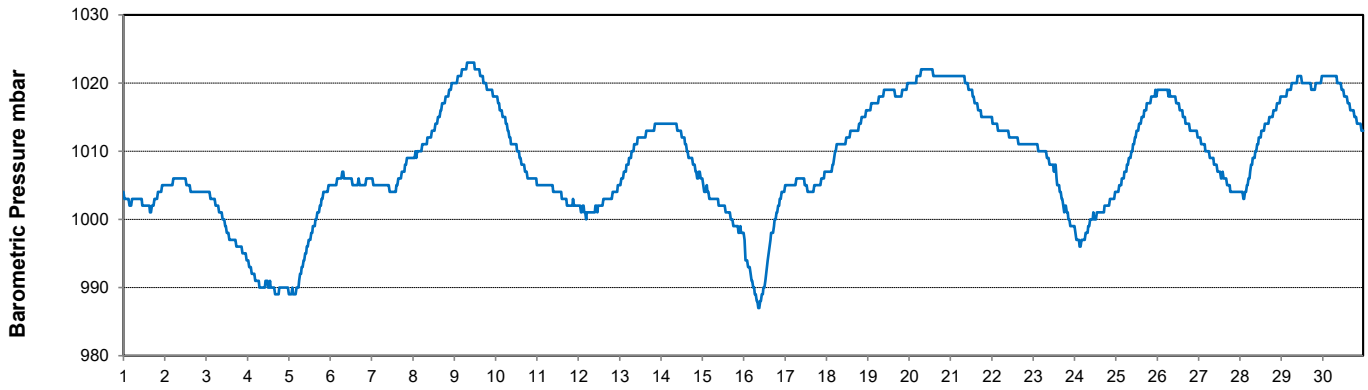
### Temperature and Precipitation for June 2024



### Relative Humidity for June 2024



### Barometric Pressure Corrected to Sea Level for June 2024





# SRC CLIMATE REFERENCE STATION DAILY DATA REPORT

## CONSERVATION LEARNING CENTRE

Saskatchewan 53.03°N 105.77°W 451m asl Estab. 2011

Preliminary

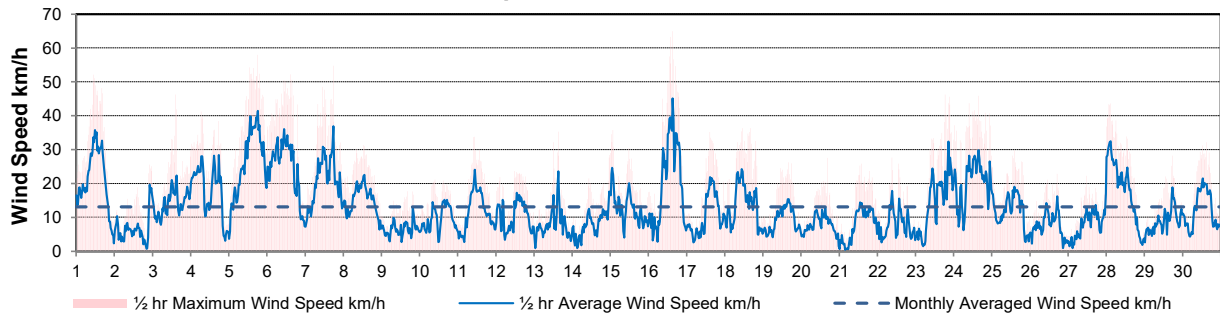
June 2024

Day	Wind Gust			Wind Speed (10 meters)	Soil Temperatures at 0900hrs								Radiation				
	Max	Direction	Time		Daily Average	Surface	5 cm	10 cm	20 cm	50 cm	100 cm	150 cm	300 cm	Bright Sunshine	Possible	% Possible	Global
	km/h			km/h		°C	°C	°C	°C	°C	°C	°C	°C	hours	hours		MJ/m <sup>2</sup>
1	52.1	NW	10:41	21.0	14.5	9.5	9.5	9.0	7.5	3.5	2.0	2.5	12.4	16.6	74.6	24.9	6.8
2	25.5	NNE	22:12	6.7	12.0	8.5	9.0	8.5	8.0	4.0	2.0	2.5	11.3	16.7	67.9	25.8	6.9
3	46.2	SSE	14:59	14.0	15.0	10.5	10.5	9.5	8.0	4.5	2.5	2.5	6.8	16.7	40.8	13.7	8.8
4	41.3	ENE	6:56	17.8	13.5	11.0	11.5	10.0	8.5	4.0	2.5	2.0	3.9	16.7	23.3	15.5	8.0
5	57.9	NW	18:06	26.8	10.0	11.0	11.5	10.5	9.0	4.5	2.5	2.0	2.5	16.7	14.9	12.3	10.0
6	52.1	NNW	14:53	24.7	13.0	10.0	10.0	9.5	9.0	5.0	3.0	2.0	8.3	16.8	49.5	21.9	8.5
7	54.8	NNW	17:36	20.7	13.0	10.0	10.5	10.0	9.0	5.5	3.5	2.5	2.5	16.8	14.9	12.0	9.5
8	31.3	NW	12:42	14.9	6.0	8.5	9.0	9.0	8.5	5.5	3.5	2.5	0.2	16.8	1.2	11.0	9.8
9	17.7	WSW	16:25	6.7	9.0	8.5	9.0	8.5	8.5	5.5	3.5	2.5	7.8	16.8	46.3	20.4	11.7
10	21.1	SSE	9:45	9.4	15.0	10.5	11.0	10.0	8.5	6.0	4.0	2.5	0.8	16.8	4.8	5.7	4.9
11	33.8	NW	10:38	11.7	13.0	10.0	10.0	9.5	8.5	5.5	4.0	2.0	11.9	16.9	70.6	25.2	8.5
12	23.7	WSW	11:54	10.4	10.5	11.0	12.0	11.0	9.0	6.0	4.0	2.5	2.3	16.9	13.6	10.0	8.5
13	35.3	WNW	15:23	8.3	15.5	12.5	12.0	11.0	9.5	6.5	4.5	2.5	9.5	16.9	56.2	17.4	11.6
14	28.4	E	23:37	7.9	16.5	12.0	12.0	11.5	10.0	6.5	4.5	2.5	10.6	16.9	62.7	20.7	10.4
15	35.8	E	1:31	12.6	17.5	14.0	14.0	12.5	10.0	6.5	4.5	2.5	11.5	16.9	68.0	25.2	7.2
16	64.9	NNW	15:25	20.6	12.0	14.0	15.0	13.5	11.0	7.0	4.5	2.5	4.3	16.9	25.4	9.5	6.7
17	35.2	WSW	14:33	10.5	10.0	9.5	11.0	11.5	11.0	7.5	5.0	3.0	12.6	16.9	74.4	24.1	9.3
18	36.3	NNW	11:11	13.7	8.0	10.0	11.0	11.5	10.5	7.5	5.0	3.0	9.9	16.9	58.5	21.3	9.7
19	26.2	WSW	16:03	9.4	12.5	11.0	11.5	11.0	10.5	7.5	5.5	3.0	12.5	16.9	73.8	23.8	9.5
20	27.5	W	16:44	7.7	16.0	11.0	12.0	11.5	10.5	7.5	5.5	3.0	14.6	16.9	86.2	29.1	5.9
21	25.8	SSE	14:14	7.8	18.5	13.0	13.5	12.5	11.0	8.0	5.5	3.0	11.7	16.9	69.1	24.1	8.6
22	27.6	S	9:09	7.7	18.5	14.5	15.0	13.5	11.5	8.0	6.0	3.0	10.8	16.9	63.8	20.6	10.4
23	46.2	SE	18:31	14.9	19.5	14.0	14.5	13.5	12.0	8.0	6.0	3.0	8.1	16.9	47.8	15.2	7.8
24	45.8	W	15:41	20.8	17.5	14.5	15.0	13.5	12.0	8.0	6.0	3.0	10.5	16.9	62.1	25.0	6.4
25	29.8	N	14:27	11.8	14.5	14.5	15.5	13.5	12.0	8.5	6.0	3.0	2.6	16.9	15.4	7.8	6.4
26	22.8	WSW	17:24	7.8	14.0	12.0	13.0	12.5	12.0	8.5	6.0	3.5	4.3	16.9	25.4	17.5	10.6
27	29.4	ENE	23:59	7.9	18.5	14.5	15.0	13.5	12.0	9.0	6.5	3.5	3.7	16.9	21.9	12.9	8.6
28	43.6	ENE	2:41	17.9	10.0	13.5	14.5	13.5	12.0	9.0	6.5	3.5	6.2	16.9	36.7	14.2	8.1
29	28.2	SSW	17:39	8.9	15.0	12.0	13.0	12.5	12.0	9.0	6.5	3.5	14.3	16.9	84.8	25.3	7.1
30	32.1	S	15:16	12.3	16.5	13.0	14.0	13.0	12.0	9.0	7.0	3.5	11.7	16.9	69.4	25.4	7.2
Total													240.1	505.5	47.5	557.5	253.4
Mean					13.8	11.6	12.2	11.4	10.1	6.7	4.6	2.8					
Extreme	64.9	NNW	15:25														
Date	16																

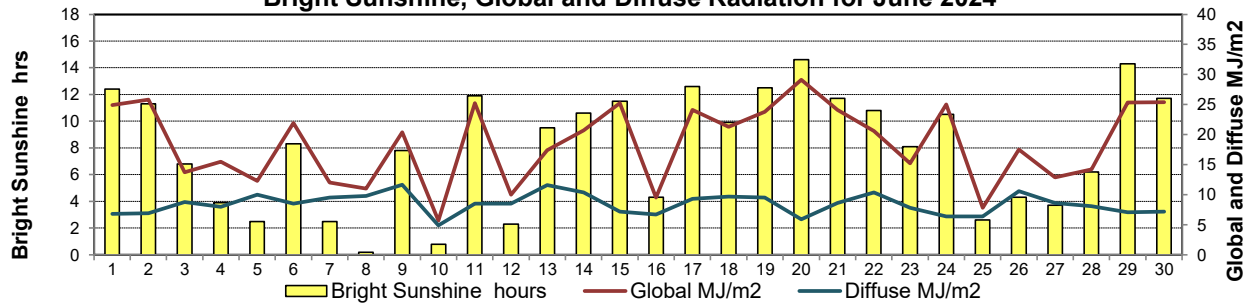
### GLOSSARY OF TERMS

Degree-days	Radiation
T <sub>m</sub> Mean Temperature	Bright Sunshine is the unobstructed direct radiation from the sun, as opposed to the shading of a location by clouds or by other atmospheric obstructions.
Growing (T <sub>m</sub> -5°C); if T <sub>m</sub> ≤ 5°C then GDD = 0	
Heating (18°C-T <sub>m</sub> ); if T <sub>m</sub> ≥ 18°C then HDD = 0	
Cooling (T <sub>m</sub> -18°C); if T <sub>m</sub> ≤ 18°C then CDD = 0	Diffuse is radiation reaching the earth's surface after having been scattered from the direct solar beam
T Trace of Precipitation	Global is the sum of the direct solar and diffuse radiation
SOG Depth of snow-on-the-ground	Relative Humidity The ratio of the air's water vapour content of its water vapour capacity which changes with temperature.
Red Cell no data available	Air Pressure The force exerted by the weight of a column of air above a given point
Red Number manual calculation	Wind Gust The daily highest instantaneous value recorded irrespective of direction and/or duration

**Wind Speed for June 2024**

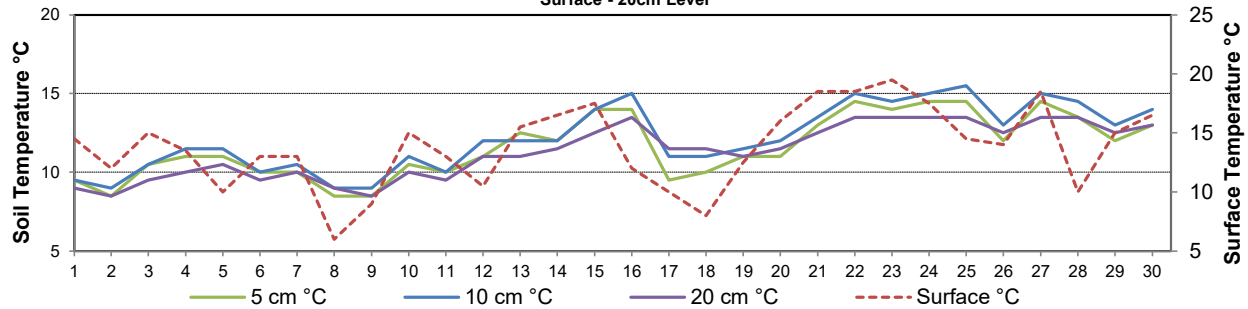


**Bright Sunshine, Global and Diffuse Radiation for June 2024**



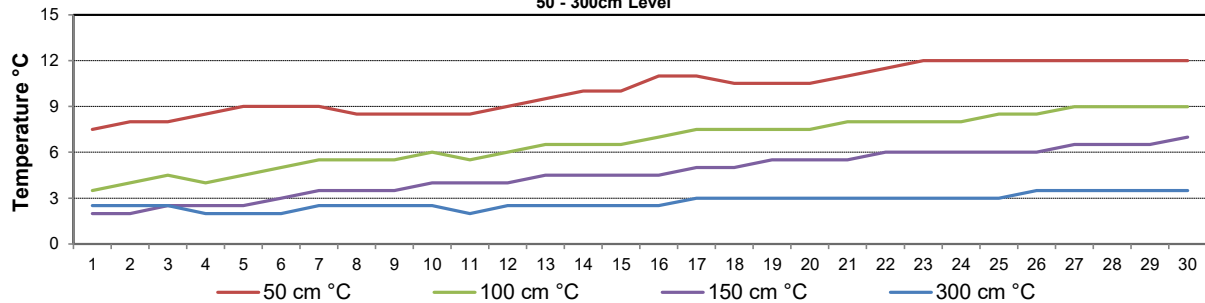
**Soil Temperatures for June 2024**

Surface - 20cm Level



**Soil Temperatures for June 2024**

50 - 300cm Level





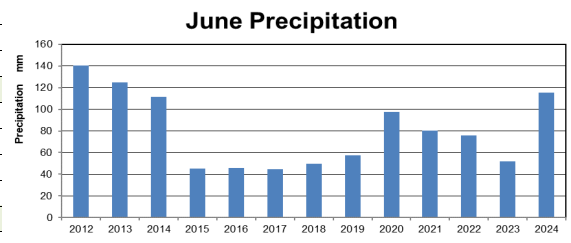
# SRC CLIMATE REFERENCE STATION DAILY DATA REPORT

## CONSERVATION LEARNING CENTRE

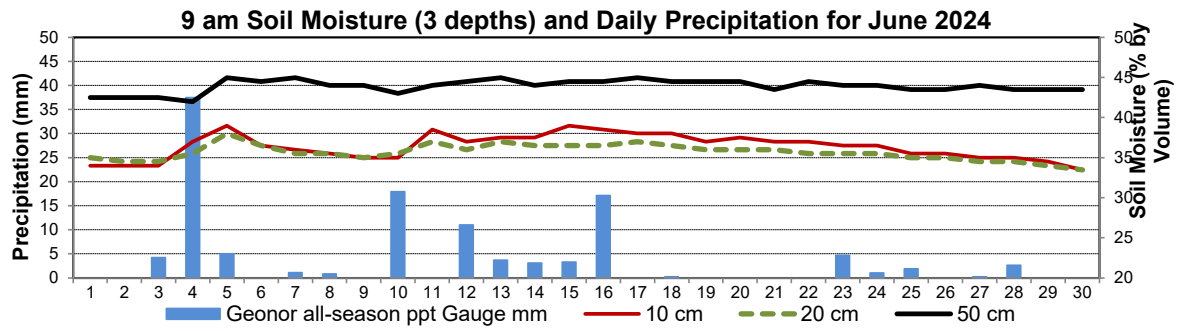
Saskatchewan 53.03°N 105.77°W 451m asl Estab. 2011

Preliminary **June 2024**

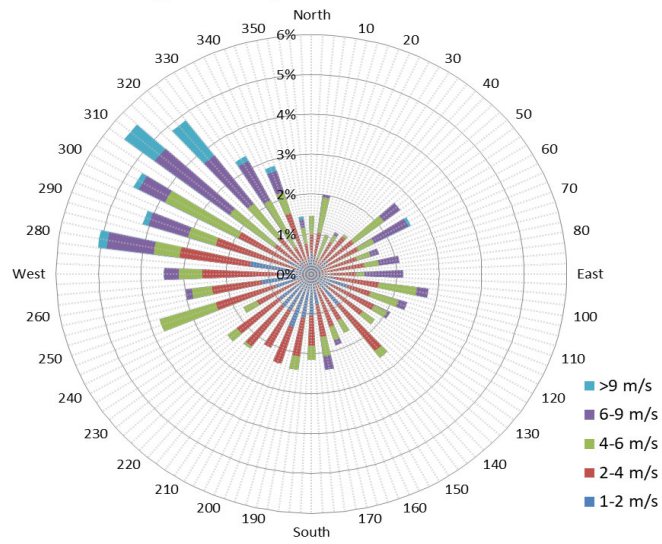
Day	2 meter Wind Speed			Soil Moisture at 0900 hrs (rounded to the 0.5%)			
	Daily Average	Max ½ hr Avg	½ hr Extreme Max	10 cm	20 cm	50 cm	
	km/h	km/h	km/h	% by volume (soil type is Clay Loam)			
1	16.0	27.3	41.6	34.0	35.0	42.5	<div style="text-align: center;"> <h3>June Temperatures</h3> </div>
2	4.0	14.3	20.0	34.0	34.5	42.5	
3	10.0	16.6	33.3	34.0	34.5	42.5	
4	13.0	22.2	31.0	37.0	35.5	42.0	
5	20.0	31.5	44.6	39.0	38.0	45.0	
6	19.0	27.6	41.0	36.5	36.5	44.5	
7	16.0	27.7	40.2	36.0	35.5	45.0	
8	12.0	17.4	24.7	35.5	35.5	44.0	
9	3.0	10.1	15.2	35.0	35.0	44.0	
10	5.0	11.4	17.0	35.0	35.5	43.0	
11	8.0	18.6	27.9	38.5	37.0	44.0	
12	7.0	13.1	19.9	37.0	36.0	44.5	
13	4.0	18.4	26.8	37.5	37.0	45.0	
14	5.0	11.1	20.8	37.5	36.5	44.0	
15	9.0	18.1	27.5	39.0	36.5	44.5	
16	14.0	33.9	49.4	38.5	36.5	44.5	
17	7.0	17.7	30.0	38.0	37.0	45.0	
18	9.0	19.1	28.5	38.0	36.5	44.5	
19	5.0	13.0	22.0	37.0	36.0	44.5	
20	4.0	11.3	24.7	37.5	36.0	44.5	
21	4.0	10.0	20.8	37.0	36.0	43.5	
22	4.0	13.9	23.3	37.0	35.5	44.5	
23	9.0	22.4	35.0	36.5	35.5	44.0	
24	15.0	22.7	35.0	36.5	35.5	44.0	
25	8.0	14.6	23.3	35.5	35.0	43.5	
26	4.0	13.3	18.5	35.5	35.0	43.5	
27	3.0	11.0	20.4	35.0	34.5	44.0	
28	13.0	24.0	34.4	35.0	34.5	43.5	
29	4.0	15.7	23.9	34.5	34.0	43.5	
30	6.0	15.7	27.2	33.5	33.5	43.5	
<b>Total</b>							
<b>Mean</b>				36	36	43.9	
<b>Extreme</b>	20.0	33.9	49.4	39	38	45	
<b>Date</b>	0	0	0	0	0	0	



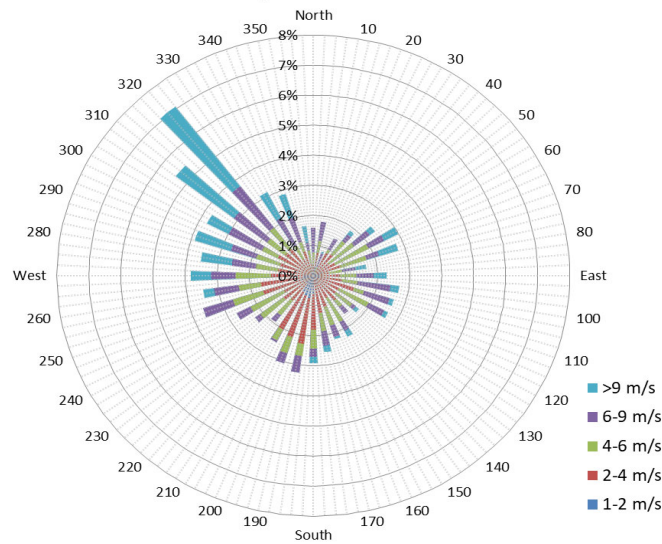
**SRC proudly recognizes the following CRS supporters:**



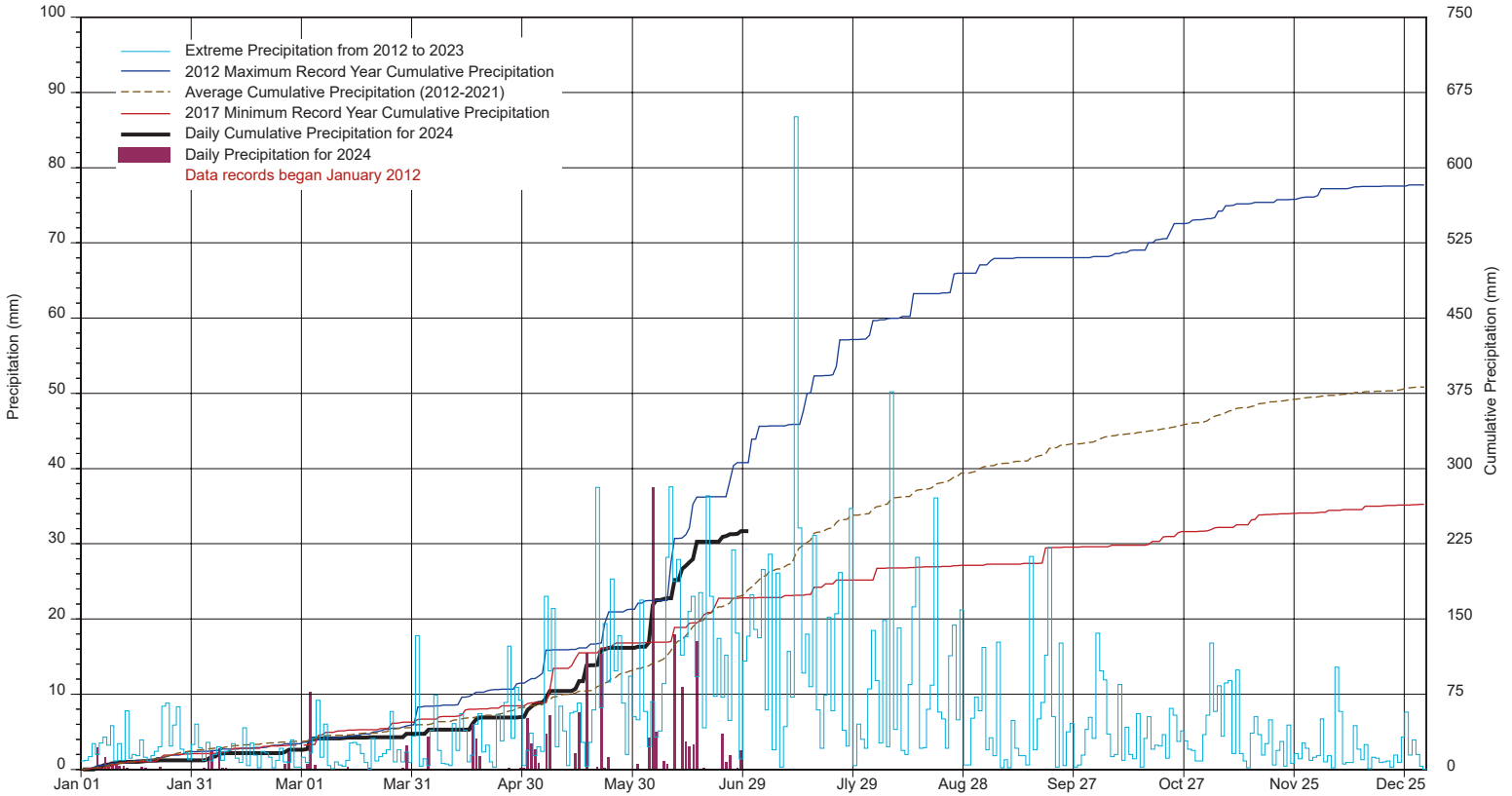
10 minute Average Wind Speed and Direction CLC June 2024



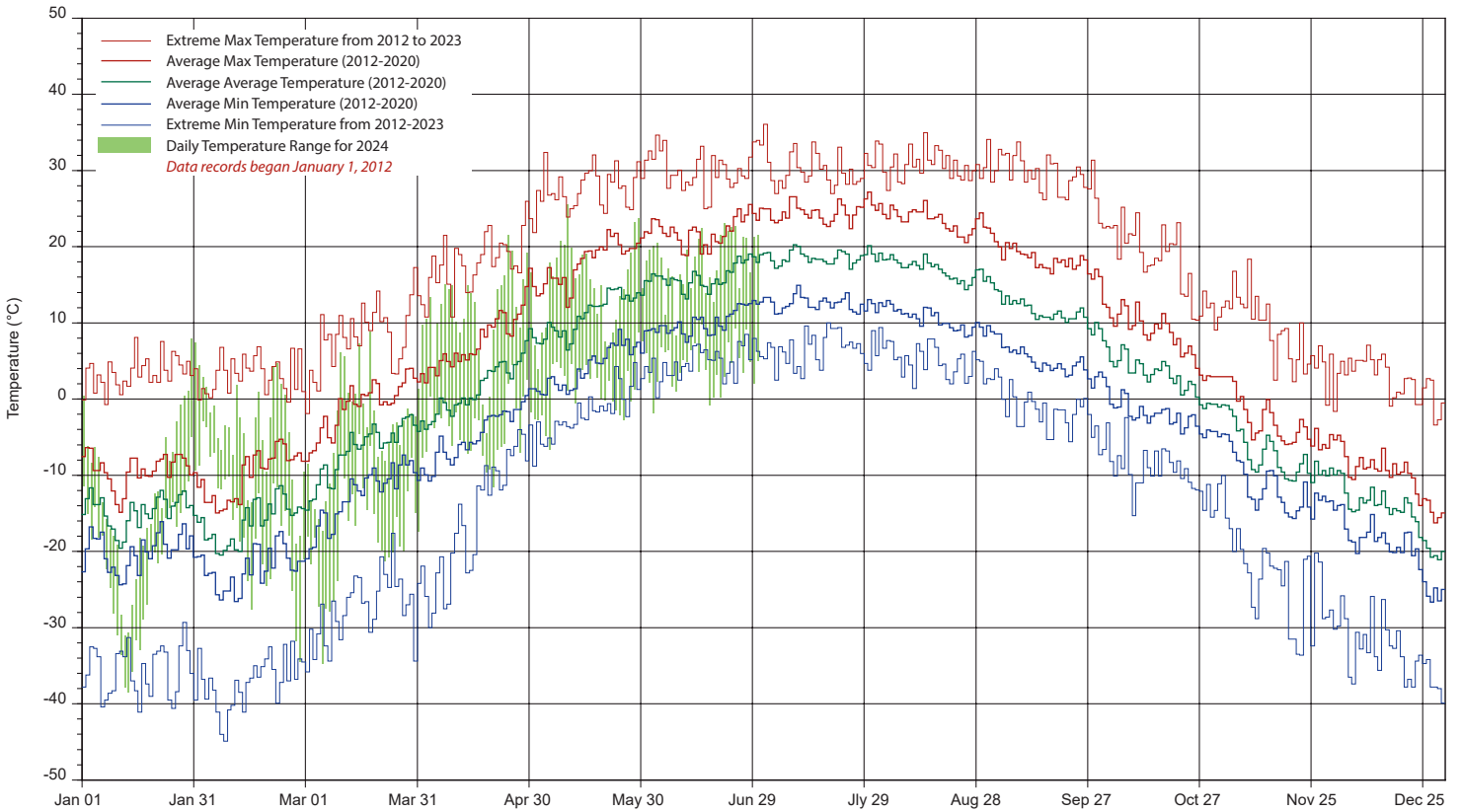
1/2 hr Maximum Wind Speed and Direction CLC June 2024



# SRC's CLIMATE REFERENCE STATION at the Conservation Learning Centre 2024 PRECIPITATION AND AVERAGE



## 2024 TEMPERATURES AND AVERAGES



SRC proudly recognizes the following CRS supporters:

