



SRC CLIMATE REFERENCE STATION DAILY DATA REPORT

CONSERVATION LEARNING CENTRE

Saskatchewan 53.03°N 105.77°W Estab. 2011

Preliminary

March 2019

Day	Temperature			Degree-days			Precipitation			Relative Humidity		Station Pressure <i>corrected to sea level</i>	
	Max	Min	Mean	Growing	Heating	Cooling	Weighing Gauge	Notes:	Snow-on-Ground 0900h	Max ½ hr Avg	Min ½ hr Avg	Max ½ hr Avg	Min ½ hr Avg
	°C	°C	°C	5°C base	18°C base	18°C base	mm		cm	%	%	mbar	mbar
1	-17.3	-27.5	-22.4	0.0	40.4	0.0	0.5		53	88	67	1032	1016
2	-20.5	-30.2	-25.4	0.0	43.4	0.0	0.0		53	79	63	1033	1027
3	-12.4	-21.5	-17.0	0.0	35.0	0.0	0.0		51	74	65	1027	1021
4	-6.3	-14.4	-10.4	0.0	28.4	0.0	0.0		44	69	56	1021	1016
5	-9.8	-20.2	-15.0	0.0	33.0	0.0	0.0		45	75	61	1024	1019
6	-6.0	-23.7	-14.9	0.0	32.9	0.0	0.0		44	89	46	1027	1022
7	-11.3	-30.8	-21.1	0.0	39.1	0.0	0.0		44	85	69	1022	1008
8	-8.1	-18.4	-13.3	0.0	31.3	0.0	0.0		44	91	68	1008	1003
9	-5.1	-15.1	-10.1	0.0	28.1	0.0	0.0	0.0	44	88	60	1013	1003
10	-6.5	-25.9	-16.2	0.0	34.2	0.0	0.0		44	89	61	1018	1013
11	-2.3	-14.8	-8.6	0.0	26.6	0.0	0.0		44	90	64	1013	998
12	4.3	-7.5	-1.6	0.0	19.6	0.0	0.0		44	95	55	1001	994
13	5.9	-5.1	0.4	0.0	17.6	0.0	0.0		44	85	47	1017	1002
14	2.9	-14.4	-5.8	0.0	23.8	0.0	0.0		43	95	59	1020	1017
15	-0.3	-18.3	-9.3	0.0	27.3	0.0	0.0		43	94	68	1020	1017
16	5.5	-9.9	-2.2	0.0	20.2	0.0	0.0		43	94	46	1021	1018
17	3.6	-13.5	-5.0	0.0	23.0	0.0	0.0		43	89	54	1024	1018
18	6.7	-2.5	2.1	0.0	15.9	0.0	0.0		43	89	57	1019	1015
19	11.4	-4.6	3.4	0.0	14.6	0.0	0.0		40	88	48	1019	1014
20	8.9	-5.3	1.8	0.0	16.2	0.0	0.0		38	97	56	1018	1015
21	10.2	-6.9	1.7	0.0	16.3	0.0	0.0		35	98	46	1022	1016
22	9.4	-4.8	2.3	0.0	15.7	0.0	0.0		33	100	67	1019	1010
23	8.8	-5.8	1.5	0.0	16.5	0.0	0.0		29	100	58	1027	1010
24	-1.4	-9.2	-5.3	0.0	23.3	0.0	0.0	0.0	26	96	59	1030	1027
25	3.3	-12.2	-4.5	0.0	22.5	0.0	0.0		26	96	61	1028	1015
26	3.6	-2.8	0.4	0.0	17.6	0.0	0.0		26	100	91	1014	1005
27	3.3	-3.0	0.2	0.0	17.8	0.0	2.0		27	100	64	1020	1005
28	6.4	-6.9	-0.3	0.0	18.3	0.0	0.0		25	91	50	1023	1016
29	3.8	-5.1	-0.7	0.0	18.7	0.0	0.0	0.0	25	91	49	1026	1016
30	7.0	-6.1	0.5	0.0	17.5	0.0	0.0		24	93	52	1026	1019
31	3.9	-3.6	0.2	0.0	17.8	0.0	0.0	0.0	21	88	45	1026	1018
Total				0.0	752.6	0.0	2.5						
Avg	0.1	-12.6	-6.3				38.6	Cumulative ppt					
Extreme	11.4	-30.8					2.0		53	100	45	1033	994
Date	19	7					27		1	22	31	2	12

SRC proudly recognizes the following CRS supporters:



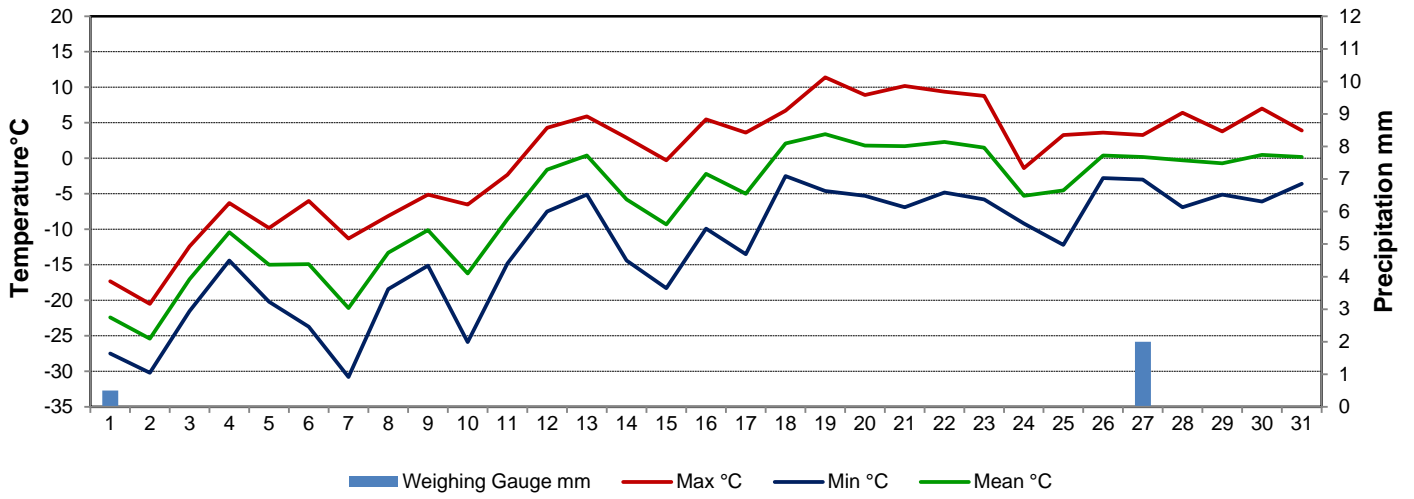
Agriculture and Agri-Food Canada

Agriculture et Agroalimentaire Canada

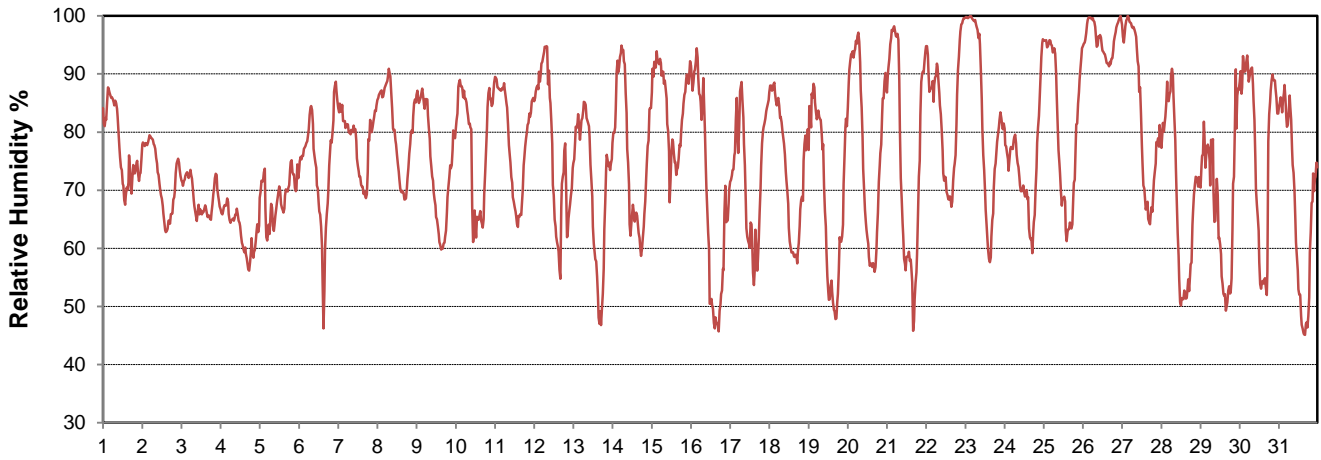


CAMPBELL SCIENTIFIC
WHEN MEASUREMENTS MATTER

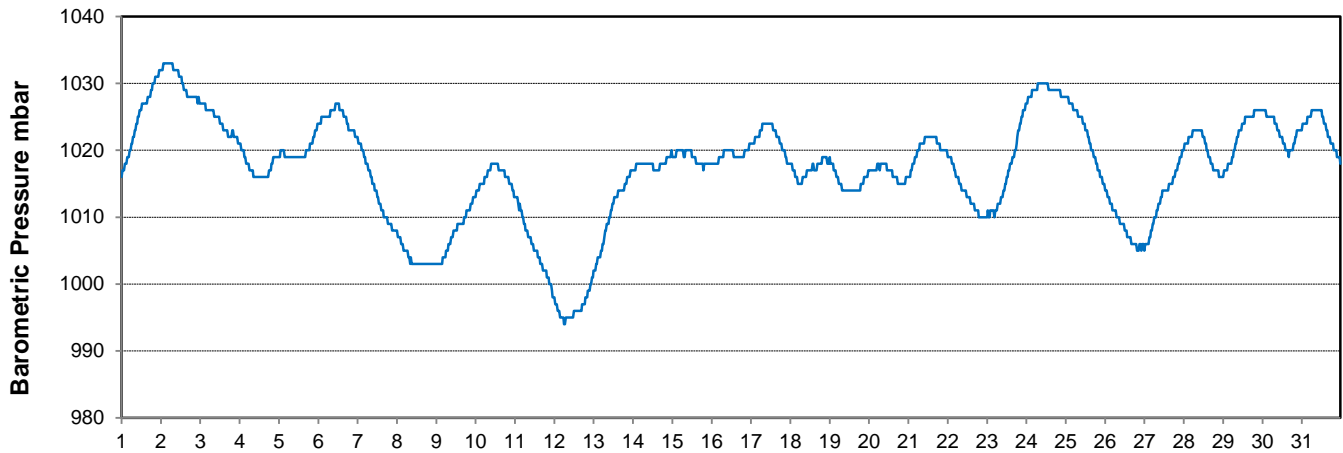
Temperature and Precipitation for March 2019



Relative Humidity for March 2019



Barometric Pressure Corrected to Sea Level for March 2019





SRC CLIMATE REFERENCE STATION DAILY DATA REPORT

CONSERVATION LEARNING CENTRE

Saskatchewan 53.03°N 105.77°W Estab. 2011

Preliminary

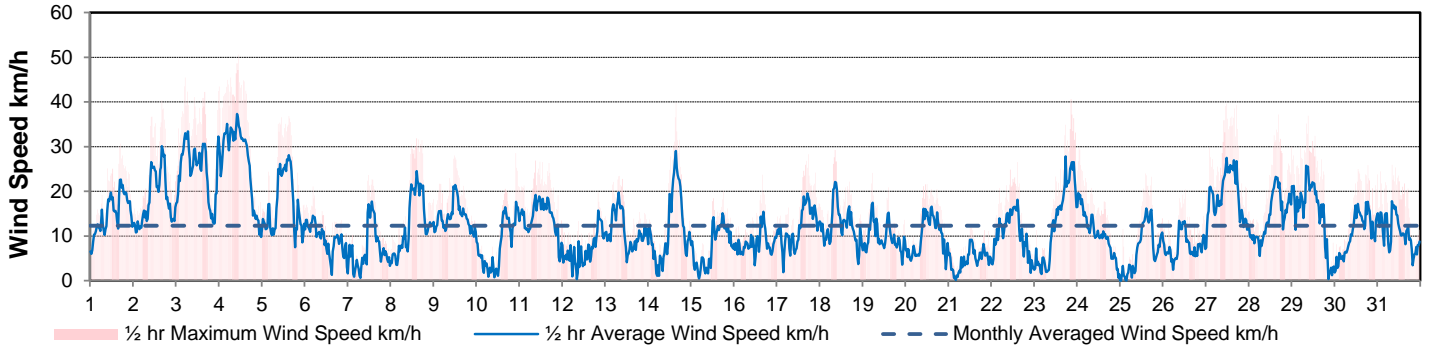
March 2019

Day	Wind Gust			Soil Temperatures at 0900hrs								Radiation				
	Max	Direction	Time	Surface	5 cm	10 cm	20 cm	50 cm	100 cm	150 cm	300 cm	Bright Sunshine	Bright Sunshine Possible	% Possible	Global	Diffuse
	km/h			°C	°C	°C	°C	°C	°C	°C	°C	hours	hours		MJ/m ²	MJ/m ²
1	30.7	NW	17:00	-12.0	-2.5	-2.0	-2.0	-0.5	0.5	1.5	4.0	9.0	10.9	82.9	11.1	7.0
2	40.3	NW	16:16	-20.0	-2.5	-2.0	-2.0	-0.5	0.5	1.5	4.0	9.9	10.9	90.7	12.5	4.7
3	45.5	WNW	5:01	-17.0	-2.5	-2.5	-2.0	-0.5	0.5	1.5	4.0	4.4	11.0	40.0	10.4	7.9
4	50.6	NW	11:02	-13.0	-2.5	-2.5	-2.0	-0.5	0.5	1.5	4.0	7.1	11.1	64.2	11.0	4.7
5	36.9	NW	15:20	-11.0	-2.5	-2.0	-2.0	-0.5	0.5	1.5	4.0	10.1	11.1	90.7	13.8	4.5
6	21.1	NW	4:42	-13.5	-2.5	-2.0	-2.0	-0.5	0.5	1.5	4.0	10.8	11.2	96.4	14.0	5.6
7	23.6	S	11:47	-16.5	-2.5	-2.0	-2.0	-0.5	0.5	1.5	4.0	10.3	11.3	91.4	15.2	7.4
8	31.9	SW	14:50	-11.0	-2.5	-2.5	-2.0	-0.5	0.5	1.5	4.0	10.4	11.3	91.7	14.5	7.8
9	28.0	NW	11:36	-12.0	-2.5	-2.5	-2.0	-0.5	0.5	1.5	4.0	10.7	11.4	93.8	14.6	8.4
10	28.5	SSW	22:23	-14.5	-2.5	-2.0	-2.0	-0.5	0.5	1.5	4.0	11.1	11.5	96.7	16.2	10.0
11	26.9	SSW	9:00	-12.0	-2.5	-2.0	-2.0	-0.5	0.5	1.5	4.0	7.5	11.6	64.9	12.7	5.6
12	19.7	NW	20:13	-6.5	-2.0	-2.0	-2.0	-0.5	0.5	1.5	3.5	1.9	11.6	16.4	9.8	8.5
13	23.5	NNW	8:02	-3.5	-2.0	-2.0	-1.5	-0.5	0.5	1.5	3.5	11.1	11.7	95.0	14.9	3.3
14	39.8	NW	15:46	-10.5	-1.5	-1.5	-1.5	-0.5	0.5	1.5	3.5	11.4	11.8	96.9	16.4	2.6
15	20.0	S	18:08	-12.0	-1.5	-1.5	-1.5	-0.5	0.5	1.5	3.5	10.6	11.8	89.6	15.2	8.1
16	23.7	WNW	16:19	-10.0	-1.5	-1.5	-1.5	-0.5	0.5	1.5	3.5	10.7	11.9	89.9	16.3	2.4
17	28.3	SW	17:30	-12.0	-1.5	-1.5	-1.5	-0.5	0.5	1.5	3.5	11.2	12.0	93.6	16.3	3.5
18	29.2	NNW	8:52	-2.0	-1.5	-1.5	-1.5	-0.5	0.5	1.5	3.5	10.9	12.0	90.5	16.3	2.3
19	24.1	SW	5:49	-1.5	-1.5	-1.5	-1.0	-0.5	0.5	1.5	3.5	11.5	12.1	95.0	16.0	2.9
20	21.7	SW	12:11	-3.0	-1.0	-1.0	-0.5	-0.5	0.5	1.5	3.5	11.7	12.2	96.1	17.5	3.4
21	12.0	ENE	12:48	-2.0	-0.5	-0.5	-0.5	-0.5	0.5	1.5	3.5	11.8	12.3	96.3	18.1	4.3
22	26.5	SSW	14:42	-0.5	-0.5	-0.5	-0.5	-0.5	0.5	1.5	3.5	11.9	12.3	96.6	17.5	5.7
23	40.6	ENE	20:58	-1.5	0.0	-0.5	-0.5	0.0	0.5	1.5	3.5	11.4	12.4	92.0	18.1	6.6
24	29.8	E	1:16	-7.0	0.0	0.0	0.0	0.0	0.5	1.0	3.0	12.1	12.5	97.1	17.8	8.1
25	24.0	S	14:27	-6.5	0.0	0.0	0.0	0.0	0.5	1.0	3.5	11.0	12.5	87.8	19.8	5.4
26	20.4	S	12:34	0.5	0.0	0.0	0.0	0.0	0.5	1.0	3.5	0.4	12.6	3.2	7.3	6.5
27	39.6	NW	11:46	0.5	0.0	0.0	0.0	0.0	0.5	1.0	3.5	0.8	12.7	6.3	7.4	6.6
28	37.2	WSW	16:31	-2.5	0.0	0.0	0.0	0.0	0.5	1.0	3.5	11.3	12.7	88.7	18.3	4.0
29	36.9	NNW	9:03	-0.5	0.0	0.0	0.0	0.0	0.5	1.0	3.5	6.5	12.8	50.7	13.4	7.6
30	25.9	ENE	18:45	-1.5	0.0	0.0	0.0	0.0	0.5	1.0	3.5	6.3	12.9	48.9	14.9	6.3
31	25.9	N	8:05	-1.5	0.0	0.0	0.0	0.0	0.5	1.0	3.5	8.6	13.0	66.4	15.7	6.3
Total												284.4	368.9	77.1	453.0	178.0
Mean				-7.6	-1.4	-1.3	-1.2	-0.4	0.5	1.4	3.7					
Extreme	50.6	NW	11:02													
Date	4															

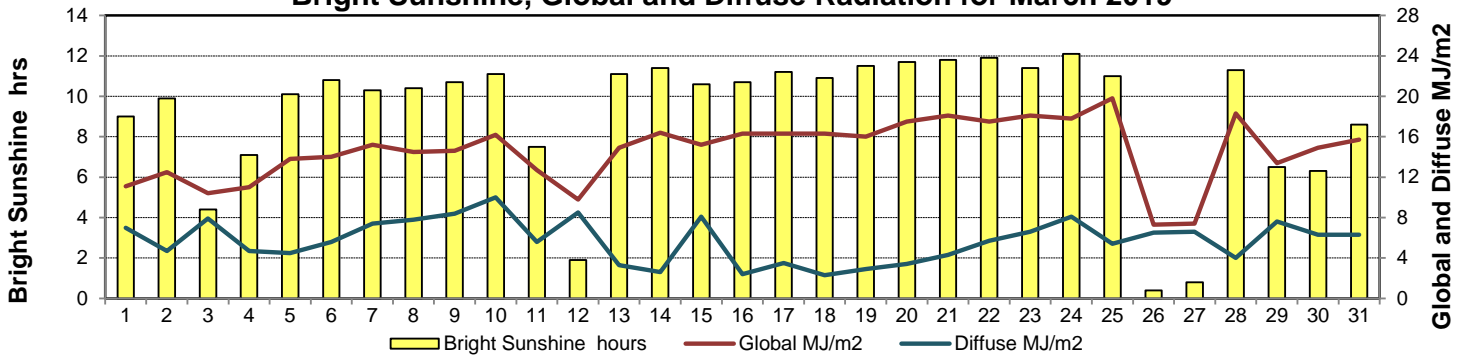
GLOSSARY OF TERMS

Degree-days	Radiation
Tm Mean Temperature	Bright Sunshine is the unobstructed direct radiation from the sun, as opposed to the shading of a location by clouds or by other atmospheric obstructions.
Growing (Tm-5°C); if Tm ≤ 5°C then GDD = 0	
Heating (18°C-Tm); if Tm ≥ 18°C then HDD = 0	
Cooling (Tm-18°C); if Tm ≤ 18°C then CDD = 0	Diffuse is radiation reaching the earth's surface after having been scattered from the direct solar beam
T Trace of Precipitation	Global is the sum of the direct solar and diffuse radiation
SOG Depth of snow-on-the-ground	Relative Humidity The ratio of the air's water vapour content to its water vapour capacity which changes with temperature.
Red Cell no data available	Air Pressure The force exerted by the weight of a column of air above a given point
Red Number manual calculation	Wind Gust The daily highest instantaneous value recorded irrespective of direction and/or duration

Wind Speed for March 2019

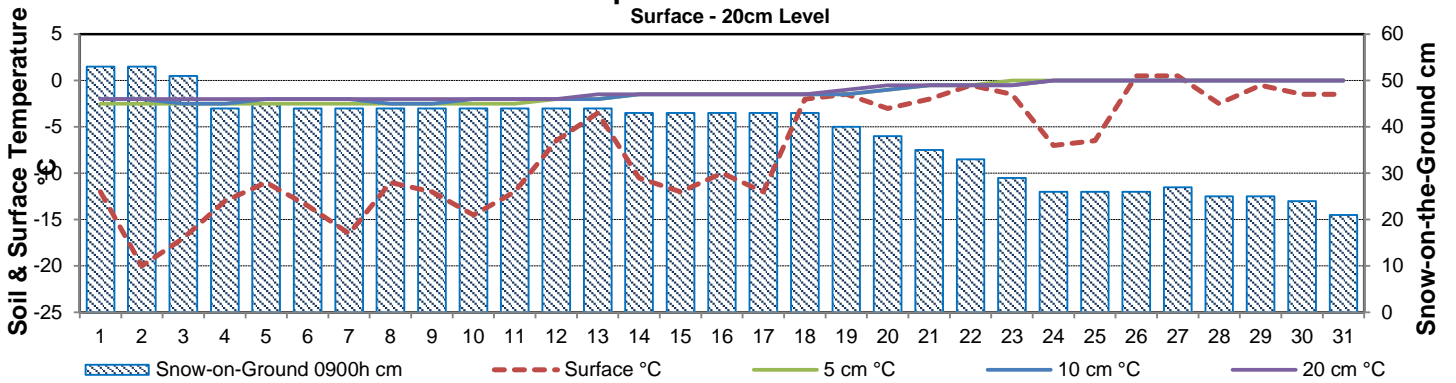


Bright Sunshine, Global and Diffuse Radiation for March 2019



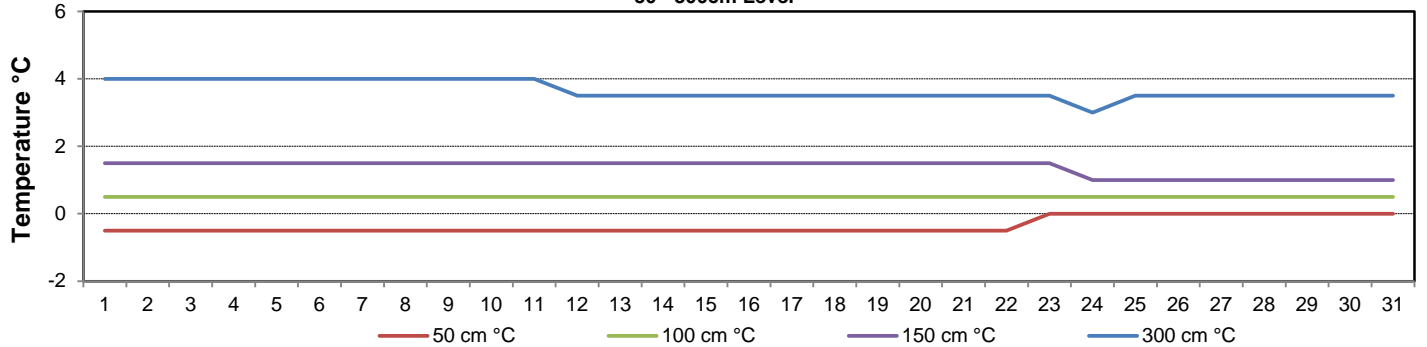
Soil Temperatures for March 2018

Surface - 20cm Level

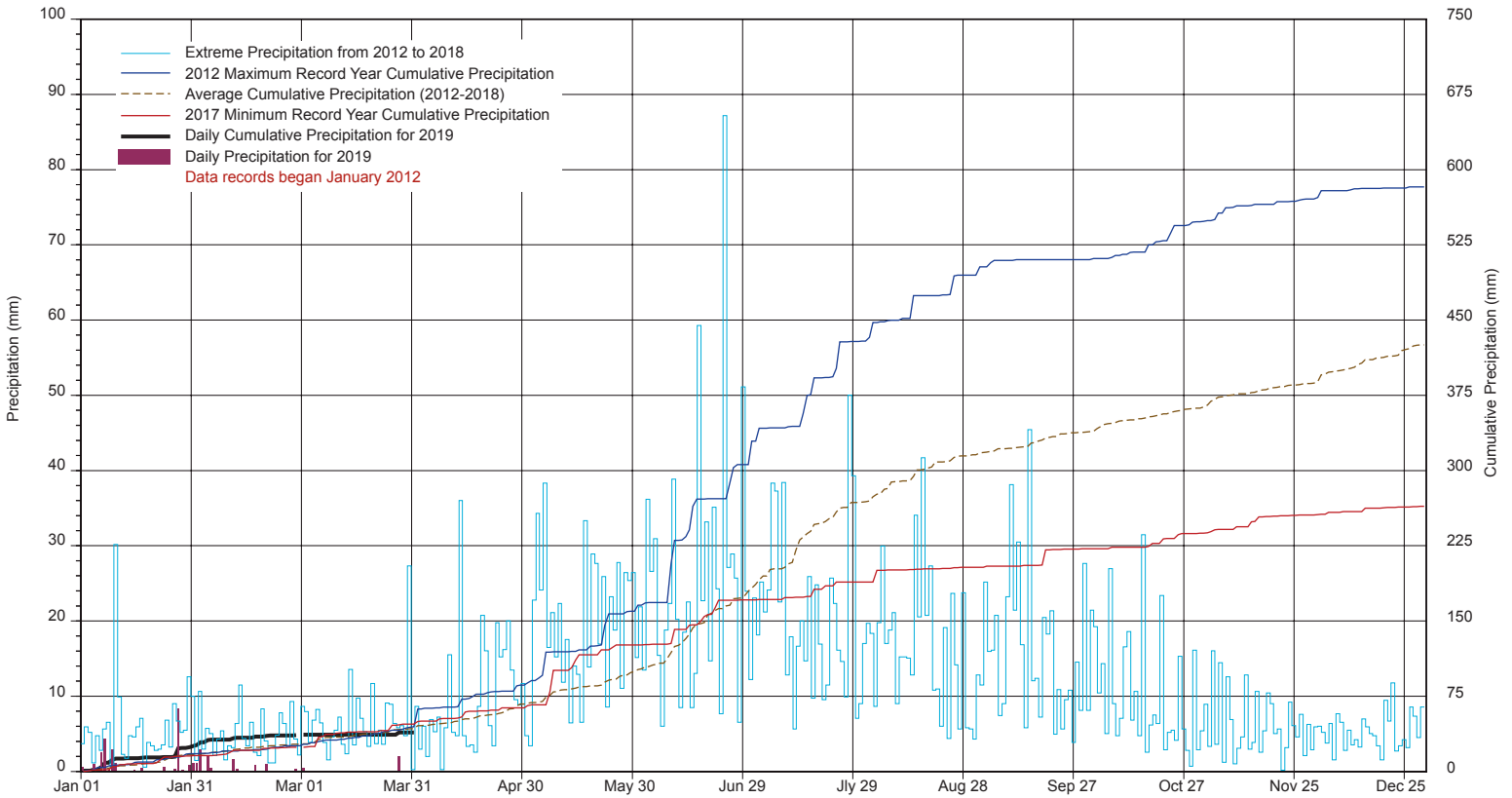


Soil Temperatures for March 2019

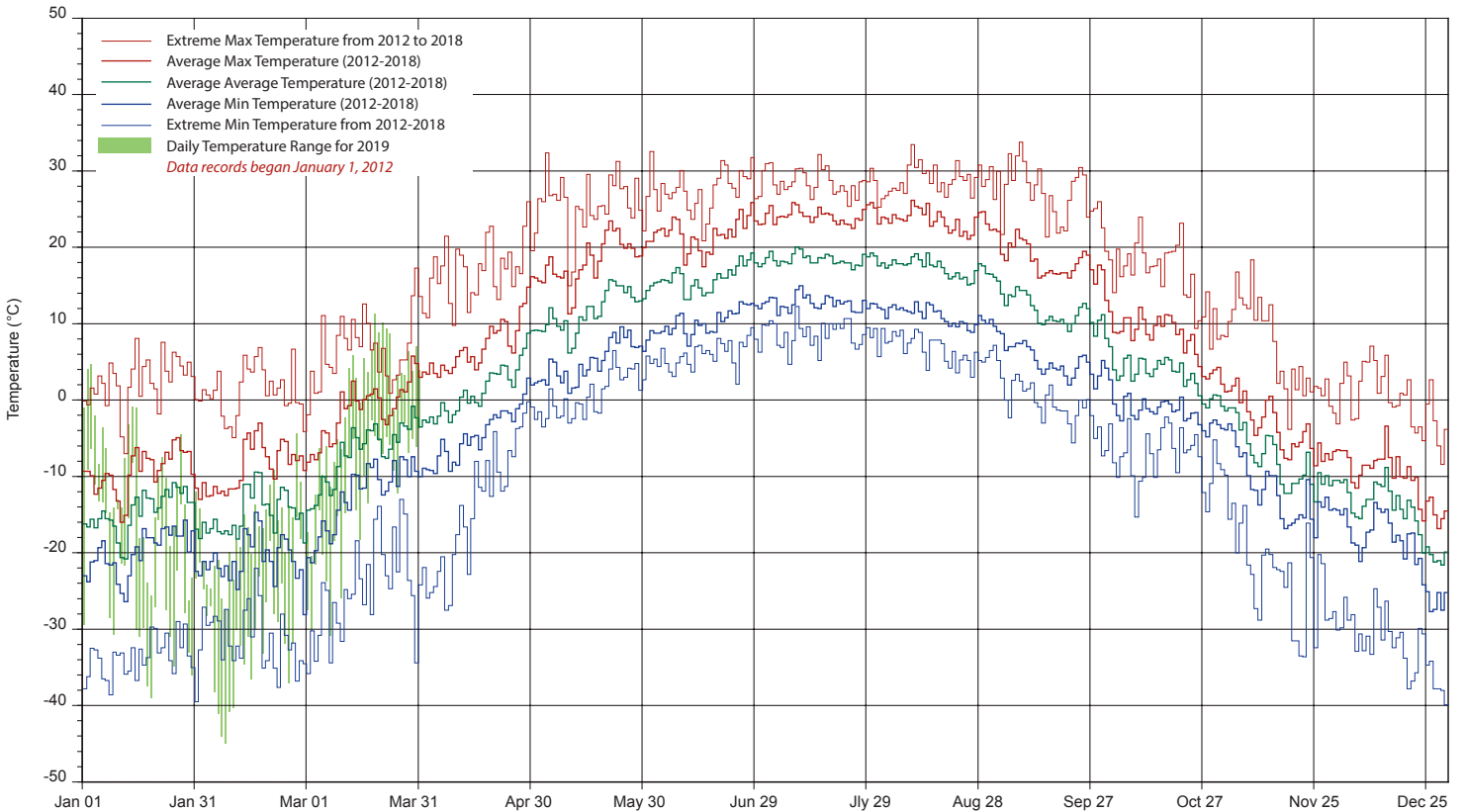
50 - 300cm Level



SRC's CLIMATE REFERENCE STATION at the Conservation Learning Centre 2019 PRECIPITATION AND AVERAGE



2019 TEMPERATURES AND AVERAGES



SRC proudly recognizes the following CRS supporters:

