



SRC CLIMATE REFERENCE STATION DAILY DATA REPORT

CONSERVATION LEARNING CENTRE

Saskatchewan 53.03°N 105.77°W 451m asl Estab. 2011

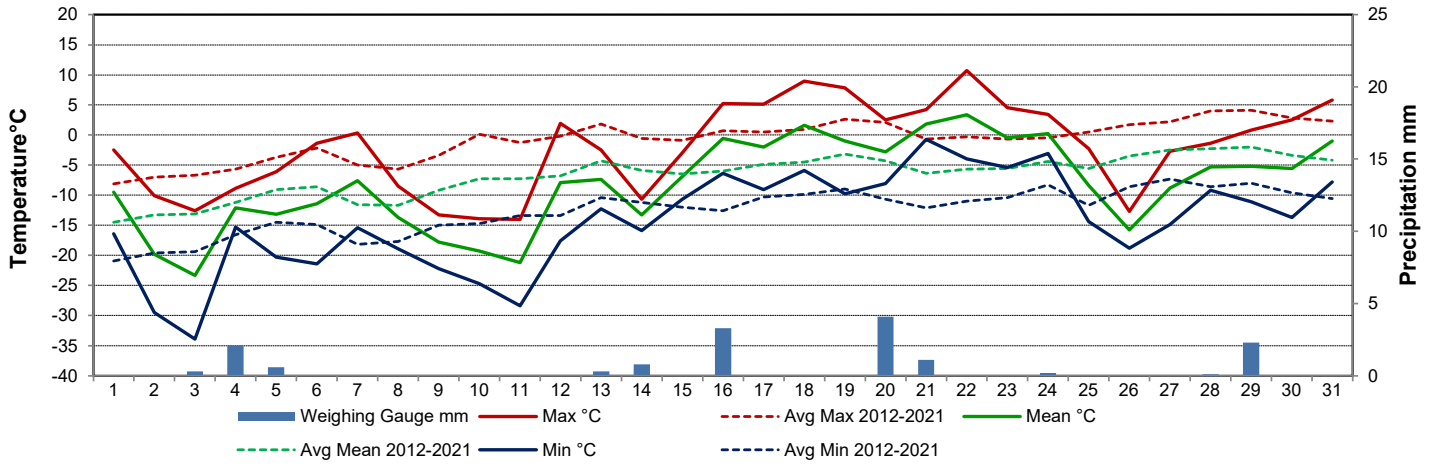
Preliminary **March 2022**

Day	Temperature						Degree-days			Precipitation			Relative Humidity		Station Pressure <i>corrected to sea level</i>	
	Max	Avg Max	Min	Avg Min	Mean	Avg Mean	Growing	Heating	Cooling	Weighing Gauge	Notes:	Snow-on-Ground 0900h	Max ½ hr Avg	Min ½ hr Avg	Max ½ hr Avg	Min ½ hr Avg
	°C	2012-2021	°C	2012-2021	°C	2012-2021	5°C base	18°C base	18°C base	mm		cm	%	%	mbar	mbar
1	-2.5	-8.1	-16.4	-20.9	-9.5	-14.5	0.0	27.5	0.0	0.0		60	91	61	1021	1014
2	-10.1	-7.0	-29.5	-19.6	-19.8	-13.3	0.0	37.8	0.0	0.0		59	85	52	1030	1022
3	-12.6	-6.7	-33.9	-19.4	-23.3	-13.1	0.0	41.3	0.0	0.3		59	83	54	1029	1022
4	-8.9	-5.7	-15.3	-16.6	-12.1	-11.2	0.0	30.1	0.0	2.1		59	92	54	1022	1018
5	-6.1	-3.7	-20.3	-14.5	-13.2	-9.1	0.0	31.2	0.0	0.6		66	92	68	1018	1017
6	-1.4	-2.2	-21.4	-14.9	-11.4	-8.6	0.0	29.4	0.0	0.0		64	93	68	1022	1018
7	0.3	-5.0	-15.4	-18.2	-7.6	-11.6	0.0	25.6	0.0	0.0		72	94	74	1018	1003
8	-8.5	-5.7	-18.9	-17.7	-13.7	-11.7	0.0	31.7	0.0	0.0		53	86	59	1022	1011
9	-13.3	-3.4	-22.2	-15.0	-17.8	-9.2	0.0	35.8	0.0	0.0		54	83	59	1023	1011
10	-13.9	0.1	-24.7	-14.7	-19.3	-7.3	0.0	37.3	0.0	0.0		51	82	58	1021	1003
11	-14.0	-1.3	-28.4	-13.4	-21.2	-7.3	0.0	39.2	0.0	0.0		49	78	53	1024	1008
12	1.9	-0.2	-17.6	-13.4	-7.9	-6.8	0.0	25.9	0.0	0.0		53	88	69	1007	996
13	-2.5	1.8	-12.3	-10.4	-7.4	-4.3	0.0	25.4	0.0	0.3		55	89	50	1016	1006
14	-10.7	-0.6	-15.9	-11.2	-13.3	-5.9	0.0	31.3	0.0	0.8		54	94	72	1018	1009
15	-3.0	-0.9	-10.7	-12.0	-6.9	-6.5	0.0	24.9	0.0	0.0		55	95	85	1008	1002
16	5.2	0.7	-6.4	-12.6	-0.6	-6.0	0.0	18.6	0.0	3.3		56	99	67	1011	1002
17	5.1	0.5	-9.1	-10.3	-2.0	-4.9	0.0	20.0	0.0	0.0		52	98	65	1014	1009
18	9.0	0.9	-5.9	-9.9	1.6	-4.5	0.0	16.4	0.0	0.0		50	97	49	1009	1006
19	7.8	2.6	-9.8	-9.0	-1.0	-3.2	0.0	19.0	0.0	0.0		49	96	50	1010	1008
20	2.5	2.1	-8.1	-10.7	-2.8	-4.3	0.0	20.8	0.0	4.1		49	99	73	1009	1007
21	4.2	-0.7	-0.7	-12.1	1.8	-6.4	0.0	16.2	0.0	1.1		50	99	64	1013	1006
22	10.7	-0.3	-4.0	-11.0	3.4	-5.7	0.0	14.6	0.0	0.0		45	88	38	1020	1013
23	4.5	-0.7	-5.4	-10.4	-0.5	-5.6	0.0	18.5	0.0	0.0		44	93	72	1019	1002
24	3.4	-0.5	-3.1	-8.3	0.2	-4.4	0.0	17.8	0.0	0.2		41	97	63	1016	1000
25	-2.3	0.5	-14.4	-11.7	-8.4	-5.6	0.0	26.4	0.0	0.0		43	81	53	1025	1017
26	-12.7	1.7	-18.8	-8.6	-15.8	-3.5	0.0	33.8	0.0	0.0		42	73	59	1029	1024
27	-2.7	2.2	-14.9	-7.3	-8.8	-2.5	0.0	26.8	0.0	0.0		42	88	68	1023	1011
28	-1.4	4.0	-9.2	-8.6	-5.3	-2.3	0.0	23.3	0.0	0.1		42	95	79	1011	1005
29	0.8	4.1	-11.1	-8.0	-5.2	-2.0	0.0	23.2	0.0	2.3		51	96	59	1015	1007
30	2.5	2.8	-13.7	-9.6	-5.6	-3.4	0.0	23.6	0.0	0.0		48	94	68	1014	1005
31	5.8	2.3	-7.8	-10.6	-1.0	-4.2	0.0	19.0	0.0	0.0		47	94	70	1005	994
Total							0.0	812.4	0.0	15.2						
Avg	-2.0	-1.2	-14.4	-13.0	-8.2	-7.1	Monthly 2012 - 2021 Average			14.1	2012-2021 Average					
Extreme	10.7	17.3	-33.9	-35.8			1.1	740.4	0.0	43.3	2022 Cumulative ppt		99	38	1030	994
Date	22	2012	3	2014						41.8	Cumulative Average		16	22	2	31

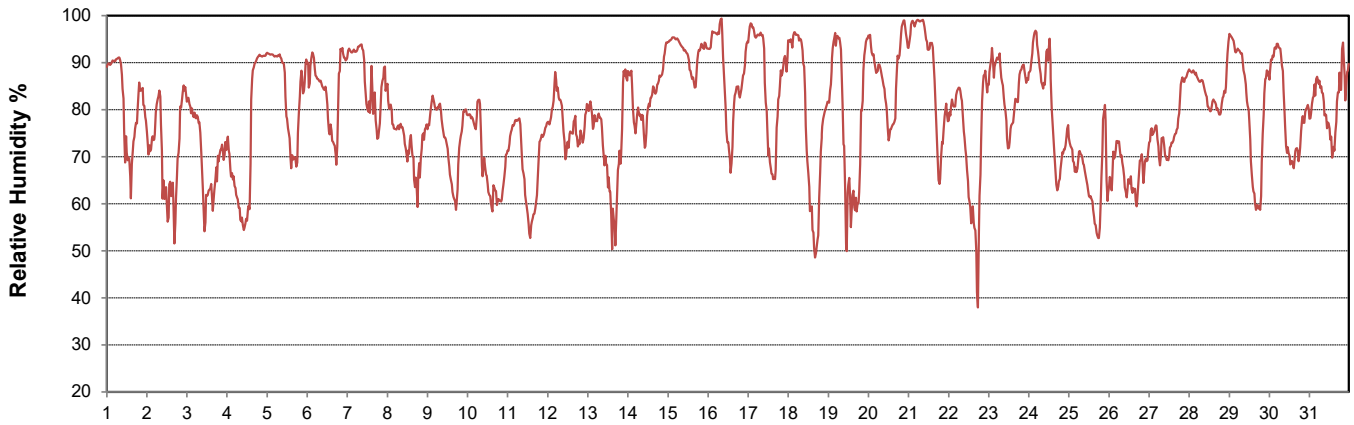
SRC proudly recognizes the following CRS supporters:



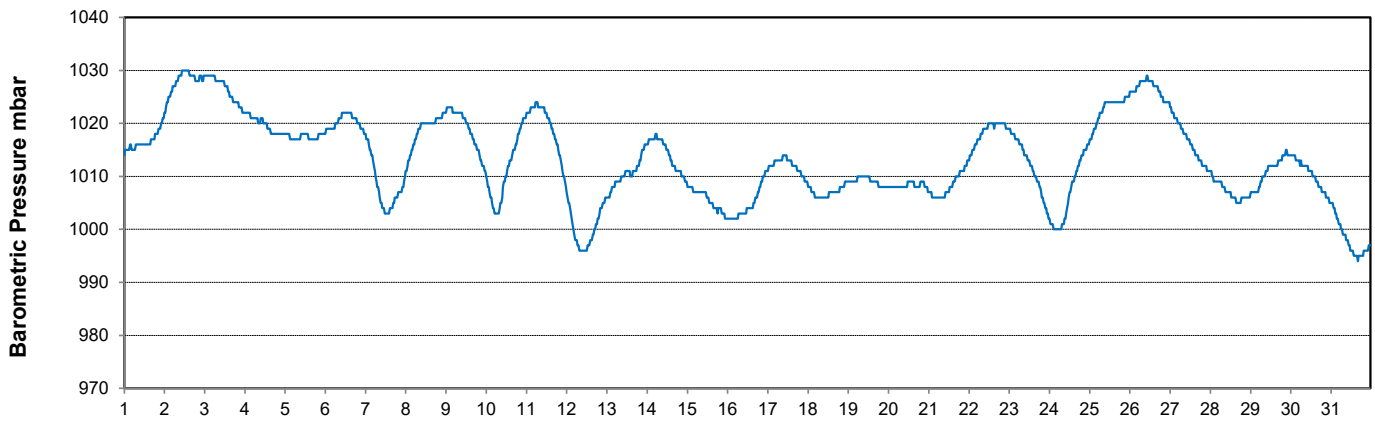
Temperature and Precipitation for March 2022



Relative Humidity for March 2022



Barometric Pressure Corrected to Sea Level for March 2022





SRC CLIMATE REFERENCE STATION DAILY DATA REPORT

CONSERVATION LEARNING CENTRE

Saskatchewan 53.03°N 105.77°W 451m asl Estab. 2011

Preliminary

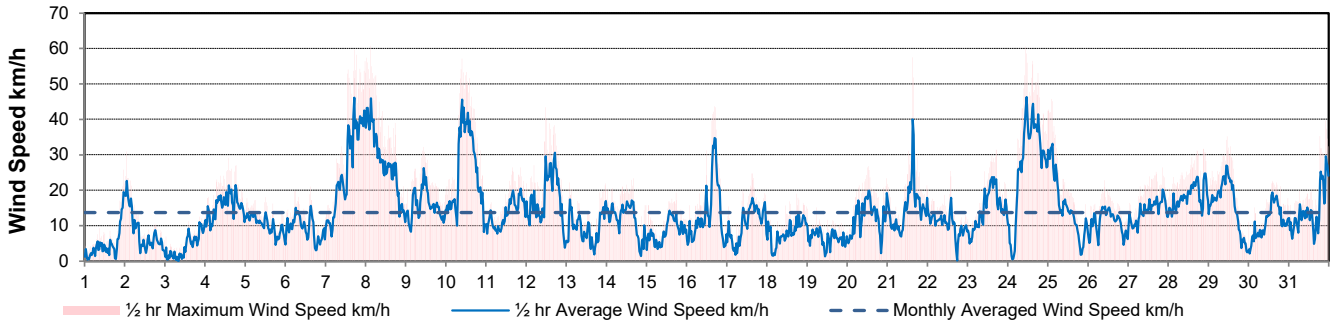
March 2022

Day	Wind Gust			Wind Speed (10 meters) Daily Average	Soil Temperatures at 0900hrs								Radiation				
	Max	Direction	Time		Surface	5 cm	10 cm	20 cm	50 cm	100 cm	150 cm	300 cm	Bright Sunshine	Bright Sunshine Possible	% Possible	Global	Diffuse
	km/h				°C	°C	°C	°C	°C	°C	°C	°C	hours	hours		MJ/m ²	MJ/m ²
1	25.7	NE	23:22	4.9	-7.5	-2.0	-1.5	-1.0	-0.5	1.0	2.0	4.5	1.1	10.9	10.1	8.2	7.5
2	30.9	NE	1:04	8.2	-9.0	-1.5	-1.5	-1.0	-0.5	1.0	2.0	4.5	10.3	10.9	94.1	13.1	2.2
3	12.5	ENE	20:46	4.2	-13.5	-1.5	-1.5	-1.0	-0.5	1.0	2.0	4.5	8.2	11.0	74.5	12.0	5.0
4	29.1	E	14:08	15.6	-10.5	-2.0	-1.5	-1.0	-0.5	1.0	2.0	4.5	0.0	11.1	0.0	6.5	6.1
5	18.0	N	12:07	10.3	-6.5	-2.0	-1.5	-1.0	-0.5	1.0	2.0	4.5	7.3	11.2	65.5	11.3	5.2
6	21.0	NNW	15:05	9.4	-7.5	-1.5	-1.5	-1.0	-0.5	1.0	2.0	4.0	6.0	11.2	53.5	11.2	5.8
7	59.7	NW	17:18	26.1	-7.5	-1.5	-1.5	-1.0	-0.5	1.0	2.0	4.0	0.6	11.3	5.3	9.2	8.4
8	60.8	NNW	3:23	27.7	-8.0	-1.5	-1.5	-1.0	-0.5	1.0	2.0	4.0	3.2	11.4	28.2	11.6	9.2
9	32.2	NW	10:32	15.9	-10.5	-1.5	-1.5	-1.0	-0.5	1.0	2.0	4.0	10.8	11.4	94.5	15.2	2.5
10	57.1	NNW	9:58	25.7	-10.5	-1.5	-1.5	-1.0	-0.5	1.0	2.0	4.0	10.2	11.5	88.7	15.0	3.9
11	26.4	SW	15:57	13.3	-13.5	-1.5	-1.5	-1.0	-0.5	0.5	2.0	4.0	10.3	11.6	89.0	14.8	4.9
12	43.4	NNW	11:59	17.4	-9.5	-2.0	-1.5	-1.0	-0.5	0.5	2.0	4.0	4.4	11.6	37.8	11.9	5.9
13	22.1	N	2:24	9.5	-6.0	-2.0	-2.0	-1.5	-0.5	0.5	2.0	4.0	9.7	11.7	82.8	14.7	3.1
14	23.4	E	16:19	11.9	-7.0	-2.0	-1.5	-1.0	-0.5	0.5	2.0	4.0	0.3	11.8	2.5	10.0	9.1
15	19.3	ENE	17:52	8.4	-5.5	-1.5	-1.5	-1.0	-1.0	0.5	1.5	4.0	6.2	11.9	52.3	12.1	9.0
16	43.6	WNW	16:48	13.4	-3.5	-1.5	-1.5	-1.0	-1.0	0.5	1.5	4.0	6.3	11.9	52.9	13.3	5.9
17	24.7	SSW	15:18	10.5	-3.0	-1.5	-1.5	-1.0	-1.0	0.5	1.5	4.0	9.8	12.0	81.7	16.8	3.2
18	19.0	WNW	17:55	8.1	-3.0	-1.0	-1.0	-1.0	-0.5	0.5	1.5	4.0	9.6	12.1	79.6	14.7	5.0
19	15.1	S	5:44	6.6	-5.0	-1.0	-1.0	-1.0	-0.5	0.5	1.5	4.0	11.5	12.1	94.8	18.0	3.0
20	26.8	ESE	12:30	12.6	-5.0	-1.0	-1.0	-0.5	-0.5	0.5	1.5	4.0	3.6	12.2	29.5	10.6	8.3
21	57.5	NW	15:29	15.1	0.0	-1.0	-1.0	-0.5	-0.5	0.5	1.5	4.0	3.5	12.3	28.5	11.4	8.9
22	25.4	NW	13:58	10.2	-2.5	-0.5	-1.0	-0.5	-1.0	0.5	1.5	4.0	11.9	12.3	96.4	17.7	2.5
23	31.4	S	17:15	14.7	-2.0	-0.5	-0.5	-0.5	-1.0	0.5	1.5	4.0	4.5	12.4	36.3	12.6	8.7
24	60.6	NW	11:00	27.4	1.0	-0.5	-0.5	-0.5	-0.5	0.5	1.5	4.0	5.4	12.5	43.3	12.4	6.3
25	45.8	NNW	2:04	15.2	-6.0	-0.5	-0.5	-0.5	-0.5	0.5	1.5	4.0	12.2	12.6	97.2	19.1	3.0
26	22.8	E	9:53	11.0	-14.0	-0.5	-0.5	-0.5	0.0	0.5	1.5	4.0	11.9	12.6	94.3	19.0	4.1
27	26.4	ESE	20:56	14.0	-8.5	-0.5	-0.5	-0.5	0.0	0.5	1.5	4.0	3.6	12.7	28.4	13.4	10.7
28	31.7	NE	21:29	18.5	-6.5	-0.5	-0.5	-0.5	-0.5	0.5	1.5	4.0	2.6	12.8	20.4	12.9	10.9
29	35.1	N	11:13	15.8	-3.5	-0.5	-0.5	-0.5	-0.5	0.5	1.5	3.5	9.5	12.8	74.0	18.1	6.3
30	22.6	S	14:05	11.0	-6.0	-0.5	-0.5	-0.5	-0.5	0.5	1.5	4.0	12.3	12.9	95.3	18.9	7.6
31	39.6	NW	22:17	13.8	-5.5	-0.5	-0.5	-0.5	0.0	0.5	1.5	3.5	6.2	13.0	47.8	15.1	8.4
Total													213.0	369.5	57.6	420.8	190.6
Mean					-6.6	-1.2	-1.1	-0.8	-0.5	0.7	1.7	4.0					
Extreme	60.8	NNW	3:23														
Date	8																

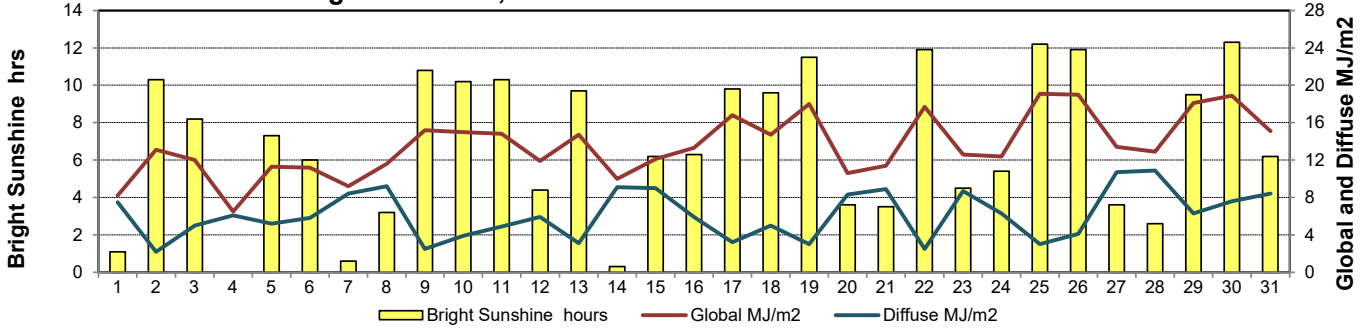
GLOSSARY OF TERMS

Degree-days	Radiation
T _m Mean Temperature	Bright Sunshine is the unobstructed direct radiation from the sun, as opposed to the shading of a location by clouds or by other atmospheric obstructions.
Growing (T _m -5°C); if T _m ≤ 5°C then GDD = 0	
Heating (18°C-T _m); if T _m ≥ 18°C then HDD = 0	
Cooling (T _m -18°C); if T _m ≤ 18°C then CDD = 0	Diffuse is radiation reaching the earth's surface after having been scattered from the direct solar beam
T Trace of Precipitation	Global is the sum of the direct solar and diffuse radiation
SOG Depth of snow-on-the-ground	Relative Humidity The ratio of the air's water vapour content to its water vapour capacity which changes with temperature.
Red Cell no data available	Air Pressure The force exerted by the weight of a column of air above a given point
Red Number manual calculation	Wind Gust The daily highest instantaneous value recorded irrespective of direction and/or duration

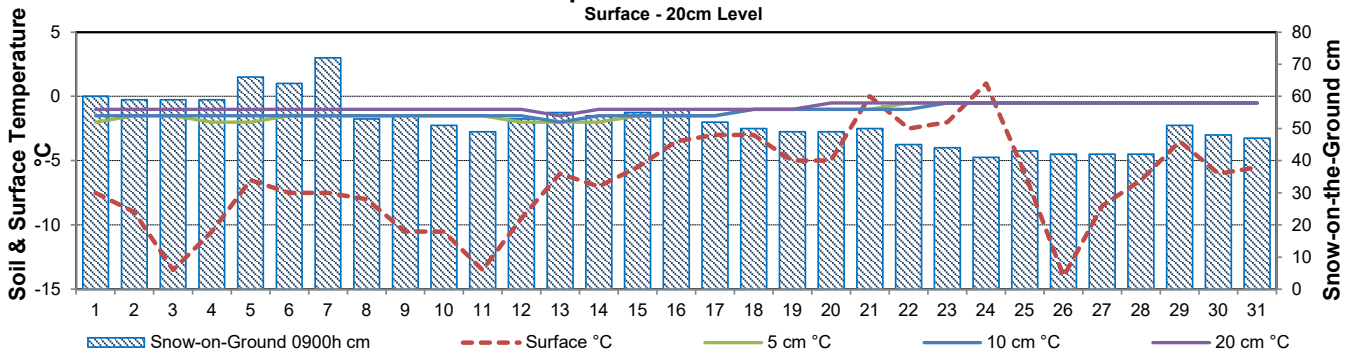
Wind Speed for March 2022



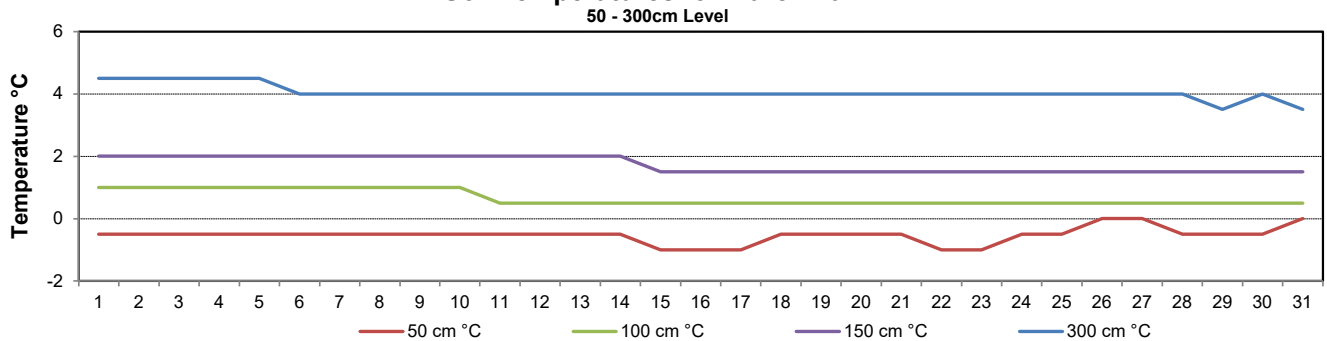
Bright Sunshine, Global and Diffuse Radiation for March 2022



Soil Temperatures for March 2022



Soil Temperatures for March 2022





SRC CLIMATE REFERENCE STATION DAILY DATA REPORT

CONSERVATION LEARNING CENTRE

Saskatchewan 53.03°N 105.77°W 451m asl Estab. 2011

Preliminary

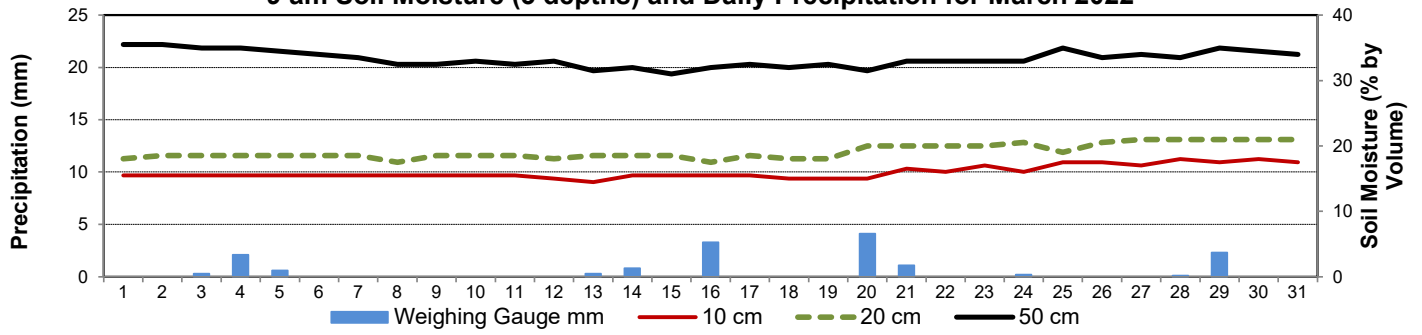
March 2022

Day	2 meter Wind Speed			Soil Moisture at 0900 hrs (rounded to the 0.5%)														
	Daily Average	Max ½ hr Avg	½ hr Extreme Max	10 cm	20 cm	50 cm												
	km/h	km/h	km/h	% by volume (soil type is Clay Loam)														
1	4.0	13.4	20.2	15.5	18.0	35.5												
2	6.0	16.6	26.4	15.5	18.5	35.5												
3	3.0	8.7	10.8	15.5	18.5	35.0												
4	14.0	19.0	26.0	15.5	18.5	35.0												
5	8.0	11.7	15.4	15.5	18.5	34.5												
6	7.0	12.8	16.6	15.5	18.5	34.0												
7	20.0	35.9	48.5	15.5	18.5	33.5												
8	22.0	36.3	48.7	15.5	17.5	32.5												
9	13.0	20.4	25.4	15.5	18.5	32.5												
10	20.0	35.0	45.0	15.5	18.5	33.0												
11	11.0	17.4	23.3	15.5	18.5	32.5												
12	14.0	24.2	32.9	15.0	18.0	33.0												
13	8.0	14.4	18.1	14.5	18.5	31.5												
14	10.0	15.8	20.6	15.5	18.5	32.0												
15	7.0	13.0	17.6	15.5	18.5	31.0												
16	11.0	26.8	34.4	15.5	17.5	32.0												
17	8.0	15.5	21.6	15.5	18.5	32.5												
18	6.0	10.4	14.5	15.0	18.0	32.0												
19	5.0	7.7	10.8	15.0	18.0	32.5												
20	10.0	17.3	23.3	15.0	20.0	31.5												
21	12.0	31.5	43.9	16.5	20.0	33.0												
22	8.0	13.7	21.0	16.0	20.0	33.0												
23	11.0	19.0	26.2	17.0	20.0	33.0												
24	21.0	35.6	45.4	16.0	20.5	33.0												
25	12.0	25.5	37.5	17.5	19.0	35.0												
26	9.0	14.1	20.2	17.5	20.5	33.5												
27	11.0	17.4	22.7	17.0	21.0	34.0												
28	15.0	20.1	26.2	18.0	21.0	33.5												
29	12.0	21.8	29.5	17.5	21.0	35.0												
30	9.0	16.8	20.6	18.0	21.0	34.5												
31	11.0	2.0	29.0	17.5	21.0	34.0												
Total																		
Mean				16	19	33.3												
Extreme	22.0	36.3	48.7	18	21	35.5												

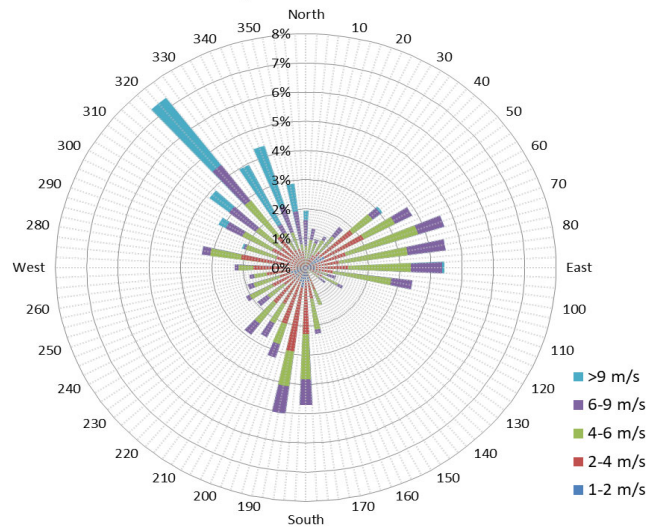
SRC proudly recognizes the following CRS supporters:



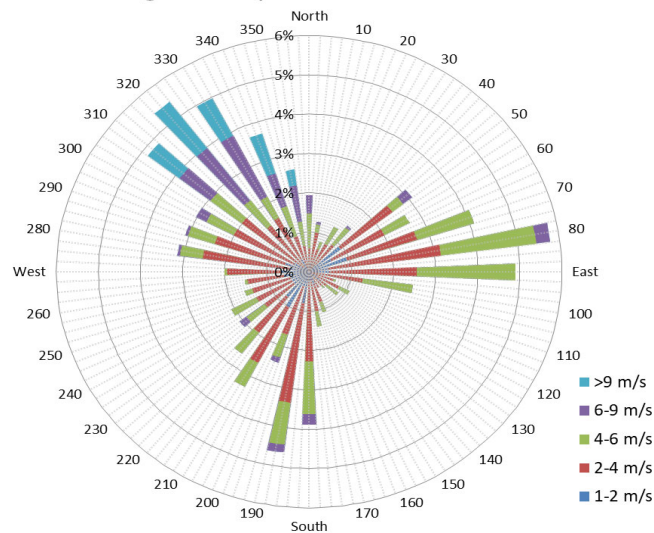
9 am Soil Moisture (3 depths) and Daily Precipitation for March 2022



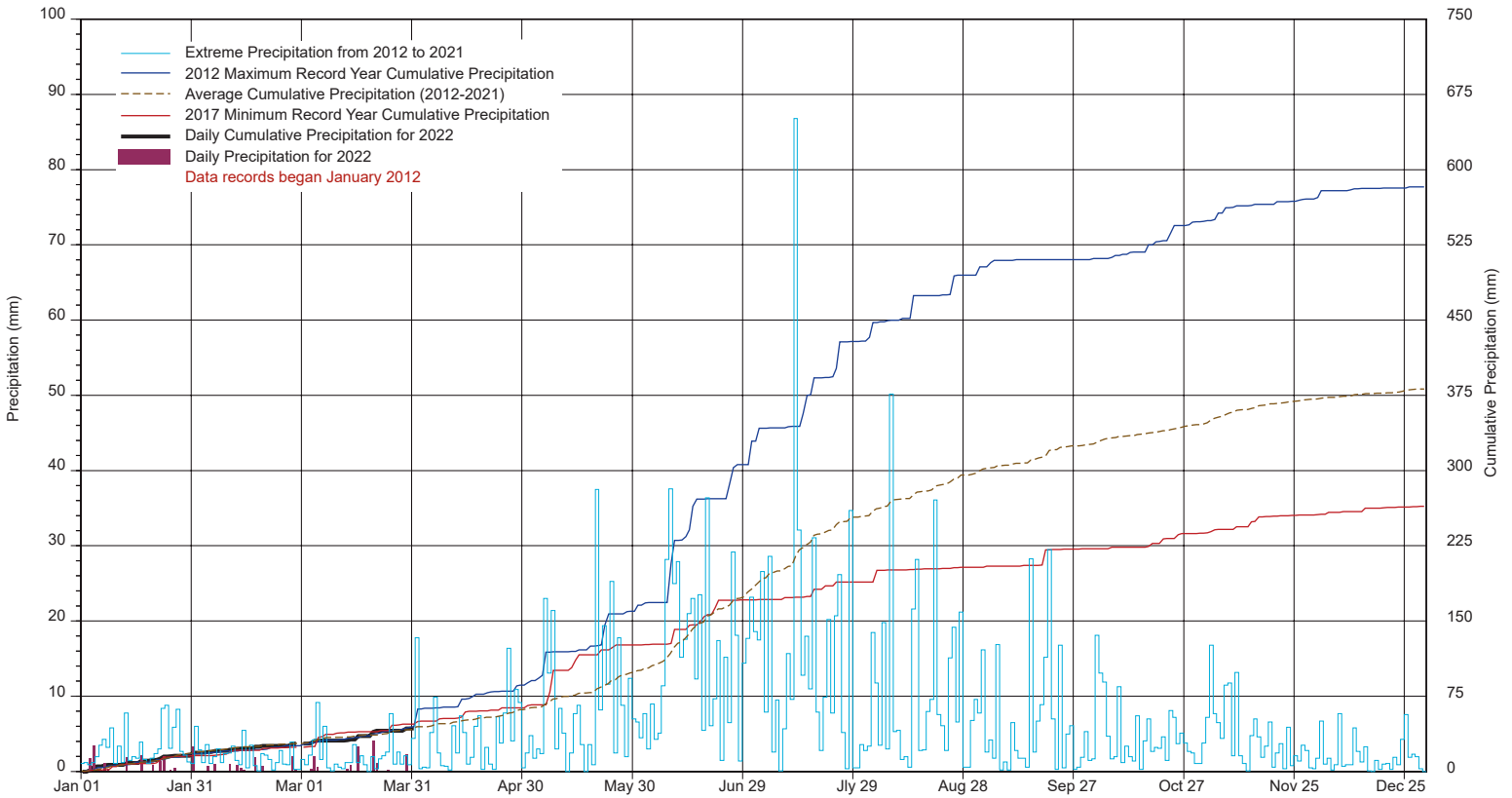
1/2 hr Maximum Wind Speed and Direction CLC March 2022



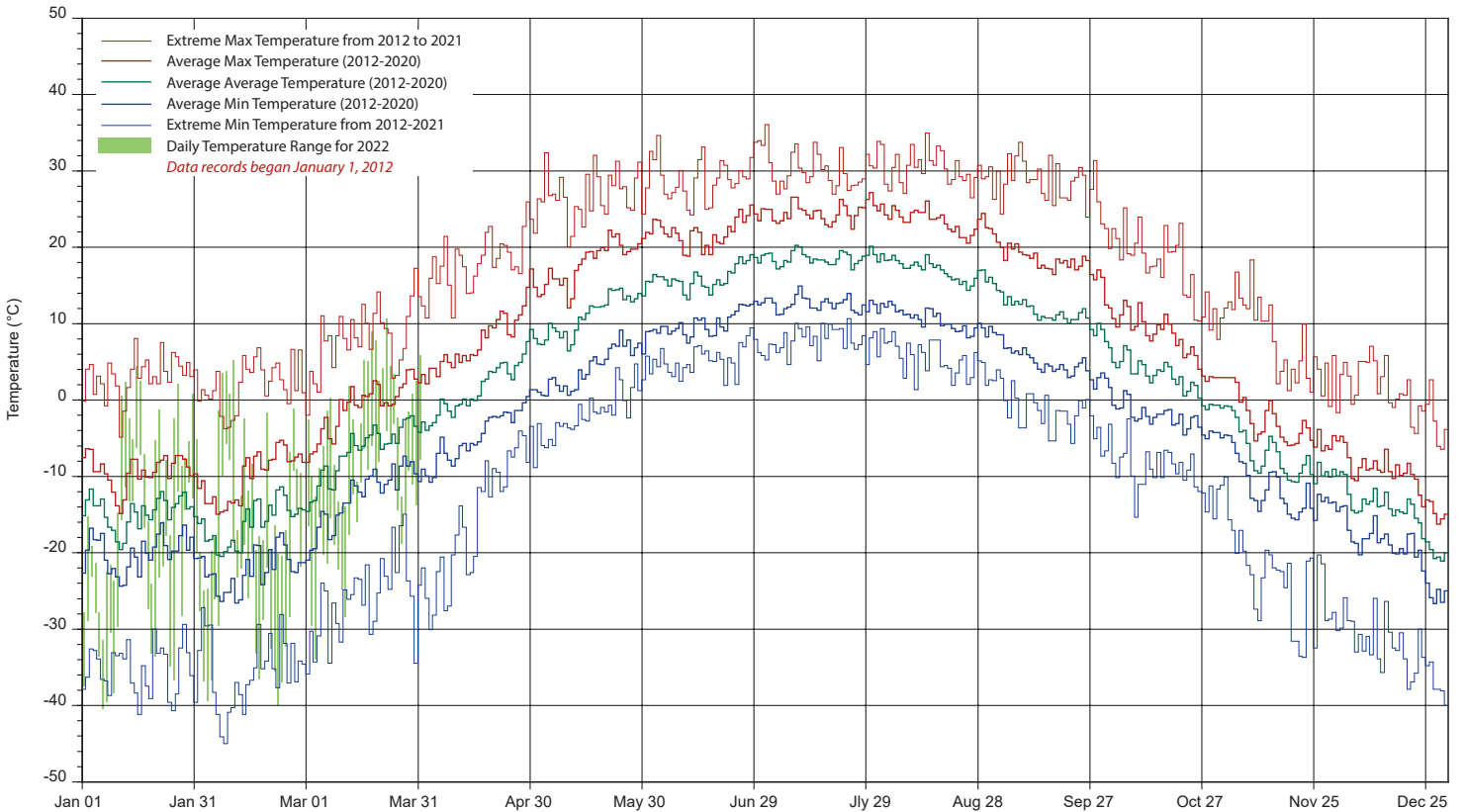
10 minute Average Wind Speed and Direction CLC March 2022



SRC's CLIMATE REFERENCE STATION at the Conservation Learning Centre 2022 PRECIPITATION AND AVERAGE



2022 TEMPERATURES AND AVERAGES



SRC proudly recognizes the following CRS supporters:

