



SRC CLIMATE REFERENCE STATION DAILY DATA REPORT

CONSERVATION LEARNING CENTRE

Saskatchewan 53.03°N 105.77°W Estab. 2011

Preliminary **May 2014**

Day	Temperature			Degree-days			Precipitation			Relative Humidity		Station Pressure <i>corrected to sea level</i>	
	Max	Min	Mean	Growing	Heating	Cooling	Weighing Gauge	Tipping Bucket	Notes	Max ½ hr Avg	Min ½ hr Avg	Max ½ hr Avg	Min ½ hr Avg
	°C	°C	°C	5°C base	18°C base	18°C base	mm	mm		%	%	mbar	mbar
1	16.3	1.9	9.1	4.1	8.9	0.0	0.0	0.0		93	44	1022	1009
2	6.8	-1.5	2.7	0.0	15.3	0.0	0.7	0.0		91	56	1014	1010
3	3.9	-3.5	0.2	0.0	17.8	0.0	0.0	0.0		75	52	1018	1014
4	6.5	-2.4	2.1	0.0	15.9	0.0	0.0	0.0		87	47	1018	1013
5	7.1	1.5	4.3	0.0	13.7	0.0	2.3	2.4		93	64	1013	1008
6	8.3	-0.8	3.8	0.0	14.2	0.0	0.0	0.0		95	44	1012	1010
7	7.8	-2.3	2.8	0.0	15.2	0.0	0.0	0.0		89	30	1013	1012
8	14.5	-1.2	6.7	1.7	11.3	0.0	0.0	0.0		89	29	1012	1002
9	17.9	3.7	10.8	5.8	7.2	0.0	0.0	0.0		75	24	1006	1000
10	10.6	-1.3	4.7	0.0	13.3	0.0	0.0	0.0		82	29	1018	1006
11	7.8	-2.0	2.9	0.0	15.1	0.0	0.0	0.0		89	48	1024	1018
12	10.5	0.7	5.6	0.6	12.4	0.0	0.0	0.0		90	43	1025	1024
13	9.8	-0.1	4.9	0.0	13.1	0.0	0.0	0.0		81	30	1026	1024
14	17.0	-2.5	7.3	2.3	10.7	0.0	0.0	0.0		95	24	1026	1020
15	16.5	4.9	10.7	5.7	7.3	0.0	0.0	0.2		74	30	1020	1016
16	20.1	8.4	14.3	9.3	3.7	0.0	0.0	0.0		81	29	1018	1015
17	17.1	7.7	12.4	7.4	5.6	0.0	0.0	0.0		76	29	1015	1012
18	17.8	5.7	11.8	6.8	6.2	0.0	0.0	0.0		62	27	1012	1007
19	14.7	6.3	10.5	5.5	7.5	0.0	0.9	1.4		78	41	1013	1007
20	19.0	4.5	11.8	6.8	6.2	0.0	0.0	0.0		81	21	1016	1013
21	23.7	4.1	13.9	8.9	4.1	0.0	0.0	0.0		85	28	1016	1010
22	28.1	9.5	18.8	13.8	0.0	0.8	0.0	0.4		89	21	1013	1010
23	31.3	12.1	21.7	16.7	0.0	3.7	0.0	0.0		81	18	1010	1004
24	26.4	13.1	19.8	14.8	0.0	1.8	0.0	0.0		70	30	1011	1003
25	20.3	11.6	16.0	11.0	2.0	0.0	0.0	0.0		83	39	1015	1011
26	14.4	9.3	11.9	6.9	6.1	0.0	17.8	18.6		93	62	1014	1009
27	18.9	7.2	13.1	8.1	4.9	0.0	8.0	9.0		94	47	1016	1009
28	18.0	7.2	12.6	7.6	5.4	0.0	0.0	0.0		95	47	1018	1012
29	22.1	9.9	16.0	11.0	2.0	0.0	12.4	13.2		93	28	1013	1006
30	21.7	8.6	15.2	10.2	2.8	0.0	0.0	0.0		78	27	1013	1009
31	24.9	7.8	16.4	11.4	1.6	0.0	1.2	1.6		80	27	1014	1011
Total				176.4	249.5	6.3	43.3	46.8					
Avg	16.1	4.1	10.2				125.4	Cumulative ppt 2014					
Extreme	31.3	-3.5					17.8	18.6		95	18	1026	1000
Date	23	3					26	26		6	23	13	9
Site Extreme	27.0	-2.4						85.4					
Date	06/2013	11/2013						2012					

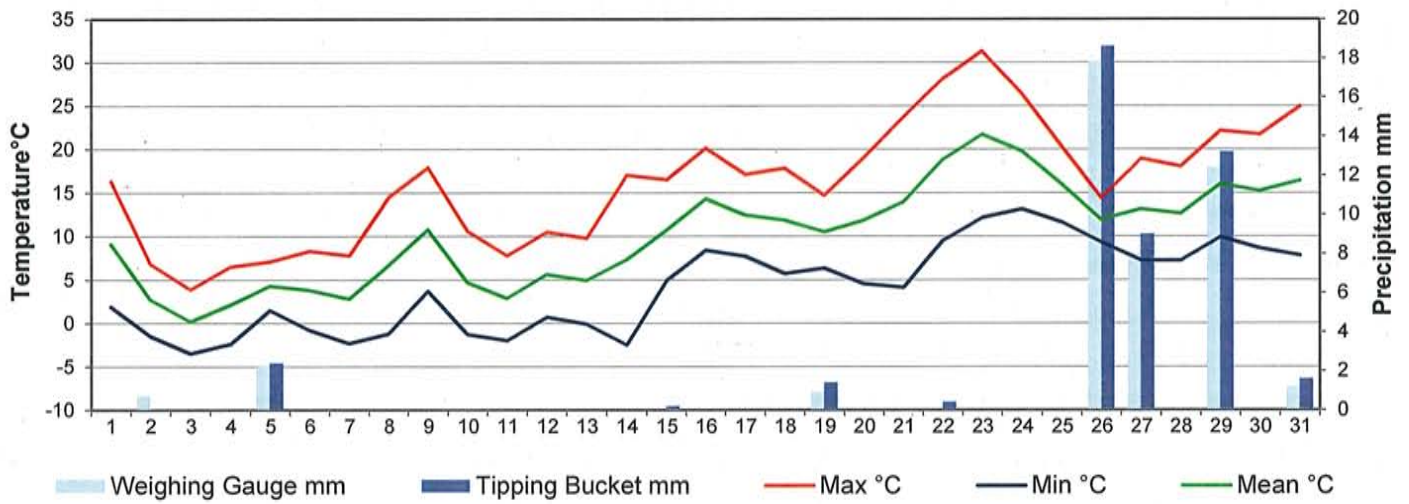


Agriculture and Agri-Food Canada

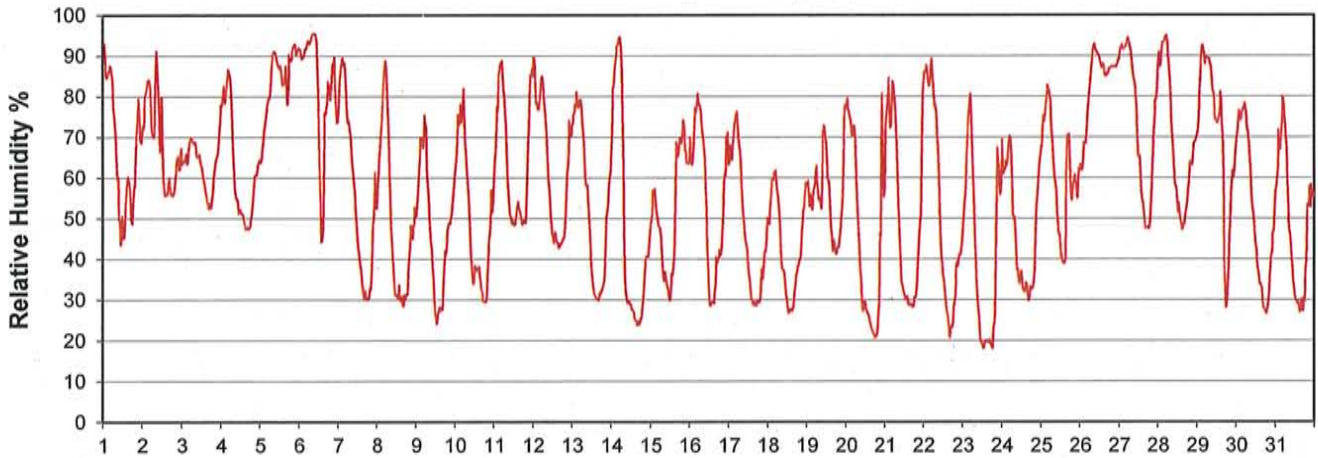
Agriculture et Agroalimentaire Canada



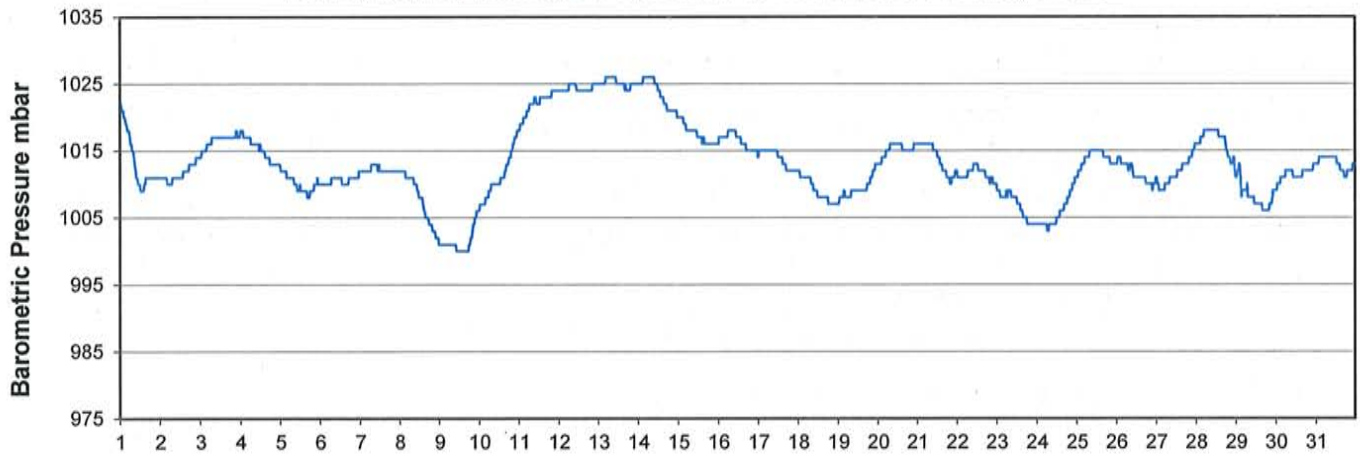
Temperature and Precipitation for May 2014



Relative Humidity for May 2014



Barometric Pressure Corrected to Sea Level for May 2014





SRC CLIMATE REFERENCE STATION DAILY DATA REPORT

CONSERVATION LEARNING CENTRE

Saskatchewan 53.03°N 105.77°W Estab. 2011

Preliminary

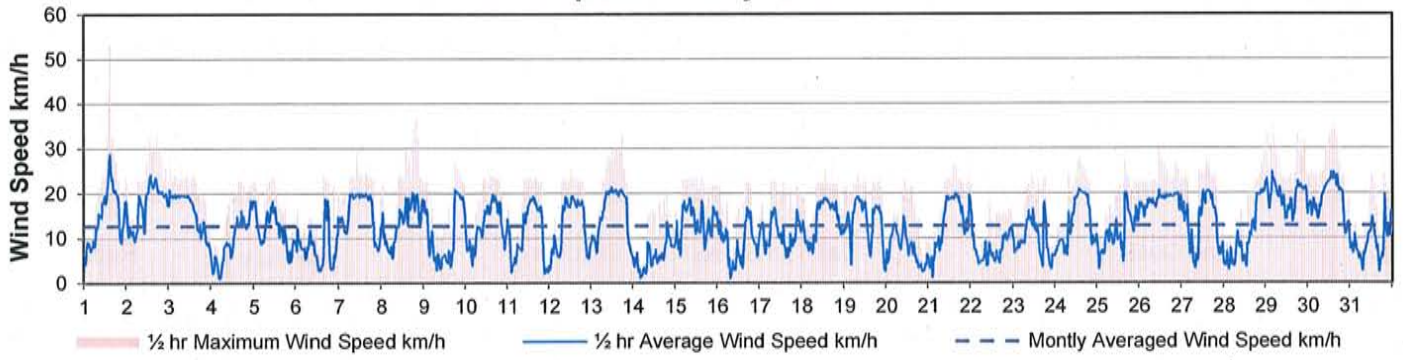
May 2014

Day	Wind Gust			Soil Temperatures at 0900hrs								Soil Moisture 30 cm	Radiation		
	Max km/h	Direction	Time	Surface °C	5 cm °C	10 cm °C	20 cm °C	50 cm °C	100 cm °C	150 cm °C	300 cm °C	0900hrs %	Bright Sunshine hours	Global MJ/m ²	Diffuse MJ/m ²
1	53.1	NNW	14:41	9.0	1.5	1.0	0.5	-0.5	0.5	1.0	3.0	43	5.9	14.9	8.7
2	35.3	NNW	13:44	2.0	1.5	1.5	1.0	0.0	0.5	1.5	3.5	40	2.6	12.0	8.5
3	28.4	NNW	0:37	-2.0	0.5	0.5	1.0	0.0	0.5	1.5	3.5	38	5.4	17.9	11.5
4	23.1	ENE	21:41	3.0	0.5	0.5	1.0	0.5	0.5	1.5	3.5	38	4.5	14.3	11.4
5	23.7	SSE	7:08	2.0	1.5	1.5	1.5	0.5	0.5	1.5	3.0	38	0.6	5.5	4.6
6	23.6	W	15:54	1.5	1.0	1.0	1.0	0.5	0.5	1.0	3.0	38	2.6	12.2	9.1
7	30.3	W	10:22	1.5	1.5	1.5	1.5	0.5	0.5	1.0	3.0	39	9.1	20.5	9.4
8	36.5	SW	19:39	7.5	1.5	1.5	2.0	1.0	1.0	1.5	3.5	38	8.6	19.8	6.9
9	27.2	NW	17:45	11.0	3.0	3.0	2.5	1.5	1.0	1.5	3.5	38	12.3	21.4	8.1
10	24.4	WNW	15:36	6.0	3.5	3.5	3.5	2.0	1.0	1.5	3.5	38	14.6	26.1	5.0
11	23.4	NNW	10:10	6.0	3.0	3.0	3.5	2.0	1.5	1.5	3.5	37	8.3	18.6	11.3
12	25.3	N	12:32	7.0	3.0	3.0	3.5	2.5	1.5	1.5	3.5	37	10.0	20.1	10.7
13	32.9	NNE	17:59	5.5	3.0	3.0	3.5	2.5	1.5	1.5	3.5	36	14.0	27.0	5.3
14	21.2	E	19:26	8.5	2.5	2.5	3.5	2.5	1.5	1.5	3.5	36	14.3	28.1	4.1
15	23.9	S	8:08	13.5	5.0	4.5	4.5	2.5	2.0	1.5	3.5	36	3.0	10.8	8.8
16	23.4	WSW	15:56	11.0	6.0	5.5	5.0	3.0	2.0	1.5	3.0	36	5.1	17.5	8.0
17	22.6	ENE	8:21	11.5	6.5	6.0	5.5	3.5	2.0	2.0	3.5	36	13.5	23.9	10.2
18	27.2	S	16:35	12.5	6.5	6.5	6.0	4.0	2.5	2.0	3.5	35	3.2	13.9	10.4
19	24.0	E	7:36	7.5	6.5	6.5	6.5	4.5	2.5	2.0	3.5	35	0.0	6.1	5.4
20	22.9	NE	9:57	11.5	5.5	5.5	5.5	4.5	2.5	2.0	3.0	35	15.3	27.9	4.2
21	27.4	NNW	23:06	15.0	6.5	6.5	6.5	4.5	3.0	2.0	3.0	35	12.8	22.4	10.1
22	21.7	NE	0:00	16.0	8.5	8.0	7.0	5.0	3.0	2.0	3.0	35	11.2	22.5	9.3
23	24.3	WSW	10:59	23.0	10.0	9.5	8.5	5.5	3.0	2.5	3.0	35	13.4	22.2	8.7
24	28.5	NNW	15:06	21.5	10.5	10.0	9.0	6.0	3.5	2.5	3.0	34	13.0	25.3	7.5
25	27.7	NW	15:49	16.0	10.5	10.0	9.5	6.5	4.0	2.5	3.0	34	8.2	16.9	9.9
26	29.7	E	11:20	9.5	10.0	10.0	9.0	6.5	4.0	2.5	3.0	40	0.0	2.9	2.5
27	27.6	WSW	14:24	12.0	9.0	8.0	8.0	6.5	4.0	2.5	2.5	38	8.0	19.2	9.1
28	34.7	ENE	23:55	13.0	9.5	9.5	9.0	7.0	4.5	3.0	3.0	38	9.6	21.6	7.5
29	40.6	E	3:43	13.0	10.0	9.5	8.5	6.5	4.0	2.5	2.0	40	6.1	12.4	8.1
30	35.5	WSW	14:50	14.5	10.0	10.0	9.5	7.5	4.5	3.0	3.0	39	14.4	26.2	6.5
31	26.8	SSW	19:42	18.0	10.0	10.0	9.5	7.5	5.0	3.5	3.0	38	11.6	49.7	13.9
Total													261.2	599.8	254.7
Mean				9.9	5.4	5.2	5.0	3.4	2.2	1.9	3.2	37.2			
Extreme	53.1	NNW	14:41												
Date	1														
Site															
Extreme															

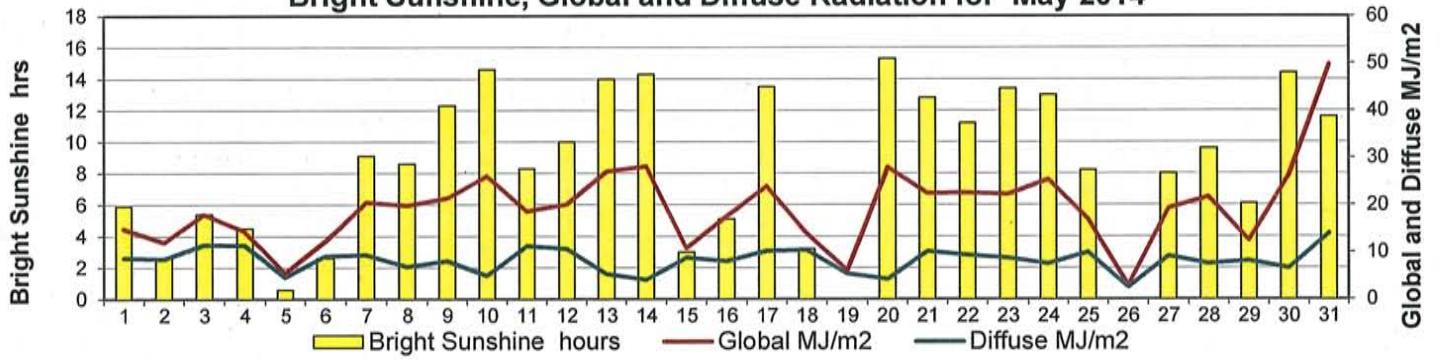
GLOSSARY OF TERMS

Tm Mean Temperature	Bright Sunshine is the unobstructed direct radiation from the sun, as opposed to the shading of a location by clouds or by other atmospheric obstructions.
Growing (Tm-5°C); if Tm ≤ 5°C then GDD = 0	
Heating (18°C-Tm); if Tm ≥ 18°C then HDD = 0	Diffuse is radiation reaching the earth's surface after having been scattered from the direct solar beam
Cooling (Tm-18°C); if Tm ≤ 18°C then CDD = 0	
T Trace of Precipitation	Global is the sum of the direct solar and diffuse radiation
SOG Depth of snow-on-the-ground	
Red Cell no data available	Relative Humidity The ratio of the air's water vapour content of its water vapour capacity which changes with temperature.
Red Number manual calculation	Air Pressure The force exerted by the weight of a column of air above a given point
	Wind Gust The daily highest instantaneous value recorded irrespective of direction and/or duration

Wind Speed for May 2014

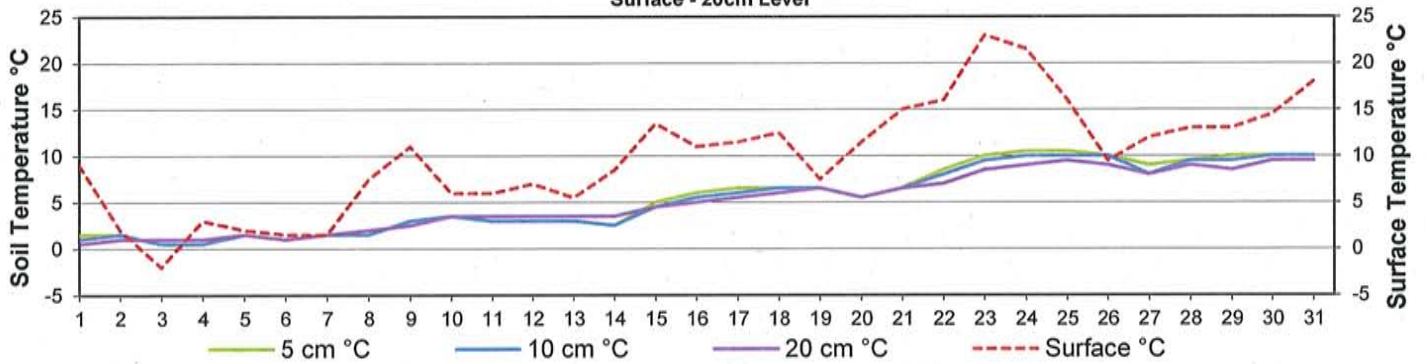


Bright Sunshine, Global and Diffuse Radiation for May 2014



Soil Temperatures for May 2014

Surface - 20cm Level



Soil Temperatures for May 2014

50 - 300cm Level

