



SRC CLIMATE REFERENCE STATION DAILY DATA REPORT

CONSERVATION LEARNING CENTRE

Saskatchewan 53.03°N 105.77°W Estab. 2011

Preliminary

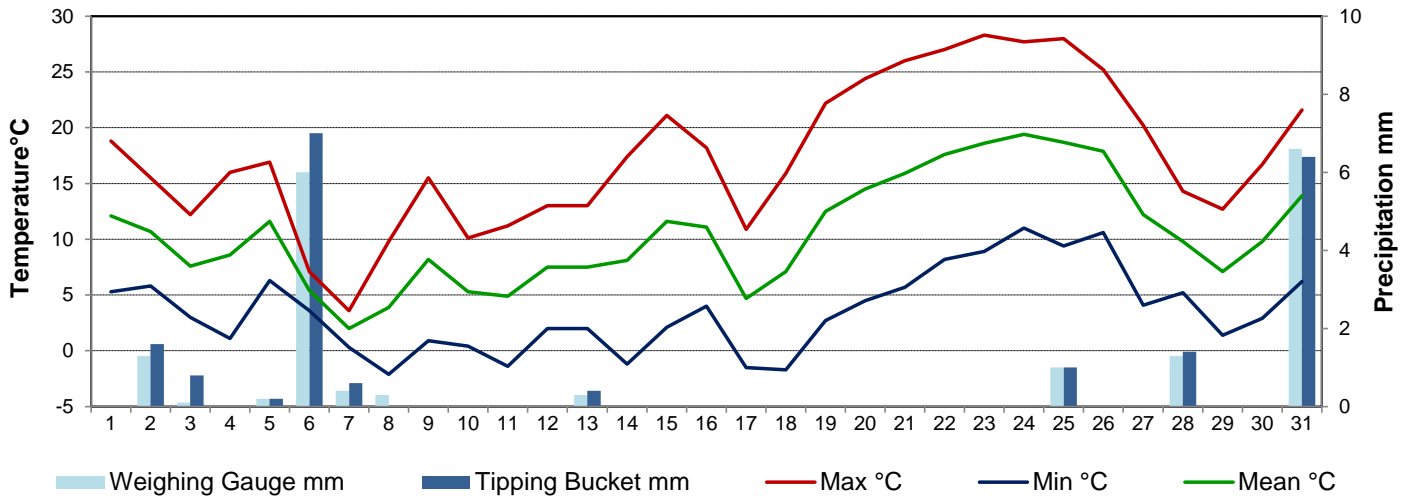
May 2015

Day	Temperature			Degree-days			Precipitation			Relative Humidity		Station Pressure <i>corrected to sea level</i>	
	Max	Min	Mean	Growing	Heating	Cooling	Weighing Gauge	Tipping Bucket	Notes	Max ½ hr Avg	Min ½ hr Avg	Max ½ hr Avg	Min ½ hr Avg
	°C	°C	°C	5°C base	18°C base	18°C base	mm	mm		%	%	mbar	mbar
1	18.8	5.3	12.1	7.1	5.9	0.0	0.0	0.0		69	21	1010	1001
2	15.5	5.8	10.7	5.7	7.3	0.0	1.3	1.6		88	33	1007	1002
3	12.2	3.0	7.6	2.6	10.4	0.0	0.1	0.8		88	35	1017	1007
4	16.0	1.1	8.6	3.6	9.4	0.0	0.0	0.0		76	28	1019	1014
5	16.9	6.3	11.6	6.6	6.4	0.0	0.2	0.2		83	45	1014	1007
6	7.1	3.6	5.4	0.4	12.6	0.0	6.0	7.0		94	83	1012	1005
7	3.6	0.3	2.0	0.0	16.0	0.0	0.4	0.6		95	61	1021	1012
8	9.8	-2.1	3.9	0.0	14.1	0.0	0.3	0.0		81	35	1024	1021
9	15.5	0.9	8.2	3.2	9.8	0.0	0.0	0.0		87	25	1024	1019
10	10.1	0.4	5.3	0.3	12.7	0.0	0.0	0.0		91	40	1026	1024
11	11.2	-1.4	4.9	0.0	13.1	0.0	0.0	0.0		92	26	1025	1019
12	13.0	2.0	7.5	2.5	10.5	0.0	0.0	0.0		86	26	1022	1019
13	13.0	2.0	7.5	2.5	10.5	0.0	0.3	0.4		91	32	1022	1020
14	17.4	-1.2	8.1	3.1	9.9	0.0	0.0	0.0		96	27	1020	1015
15	21.1	2.1	11.6	6.6	6.4	0.0	0.0	0.0		91	22	1016	1011
16	18.2	4.0	11.1	6.1	6.9	0.0	0.0	0.0		89	33	1022	1010
17	10.9	-1.5	4.7	0.0	13.3	0.0	0.0	0.0		77	23	1029	1023
18	15.9	-1.7	7.1	2.1	10.9	0.0	0.0	0.0		92	17	1031	1027
19	22.2	2.7	12.5	7.5	5.5	0.0	0.0	0.0		67	14	1027	1021
20	24.4	4.5	14.5	9.5	3.5	0.0	0.0	0.0		68	13	1022	1018
21	26.0	5.7	15.9	10.9	2.1	0.0	0.0	0.0		76	13	1019	1016
22	27.0	8.2	17.6	12.6	0.4	0.0	0.0	0.0		70	14	1017	1014
23	28.3	8.9	18.6	13.6	0.0	0.6	0.0	0.0		77	16	1017	1015
24	27.7	11.0	19.4	14.4	0.0	1.4	0.0	0.0		84	20	1017	1011
25	28.0	9.4	18.7	13.7	0.0	0.7	1.0	1.0		93	20	1011	1007
26	25.2	10.6	17.9	12.9	0.1	0.0	0.0	0.0		80	35	1015	1008
27	20.2	4.1	12.2	7.2	5.8	0.0	0.0	0.0		94	26	1017	1011
28	14.3	5.2	9.8	4.8	8.2	0.0	1.3	1.4		90	50	1025	1010
29	12.7	1.4	7.1	2.1	10.9	0.0	0.0	0.0		79	32	1028	1026
30	16.7	2.9	9.8	4.8	8.2	0.0	0.0	0.0		67	23	1026	1019
31	21.6	6.2	13.9	8.9	4.1	0.0	6.6	6.4		91	31	1019	1007
Total				175.3	234.9	2.7	17.5	19.4					
Avg	17.4	3.5	10.5				87.1	Cumulative ppt					
Extreme	28.3	-2.1					6.6	7.0	0	96	13	1031	1001
Date	23	8					31	6		14	20	18	1

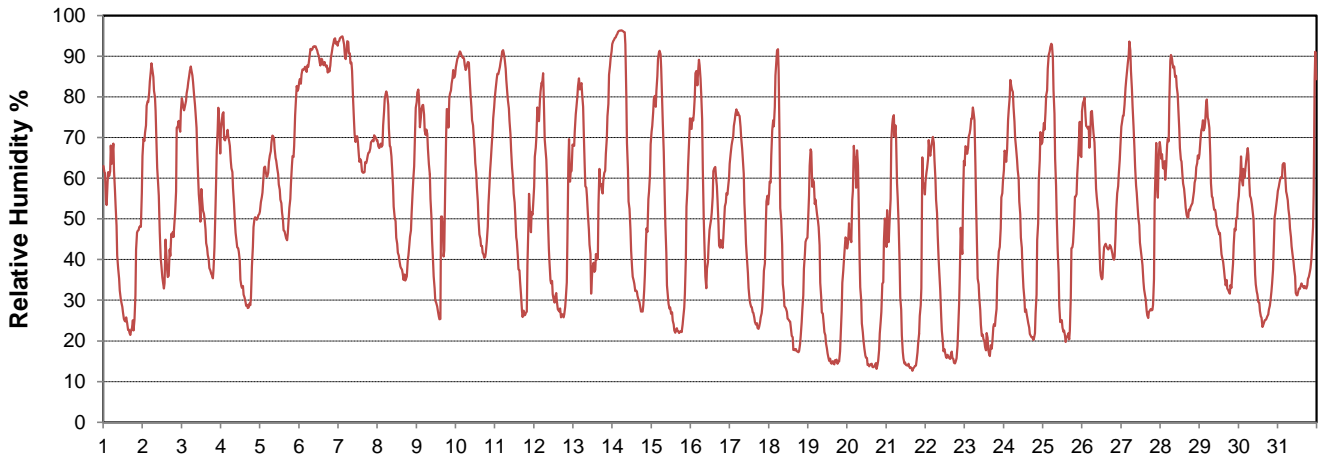
SRC proudly recognizes the following CRS supporters:



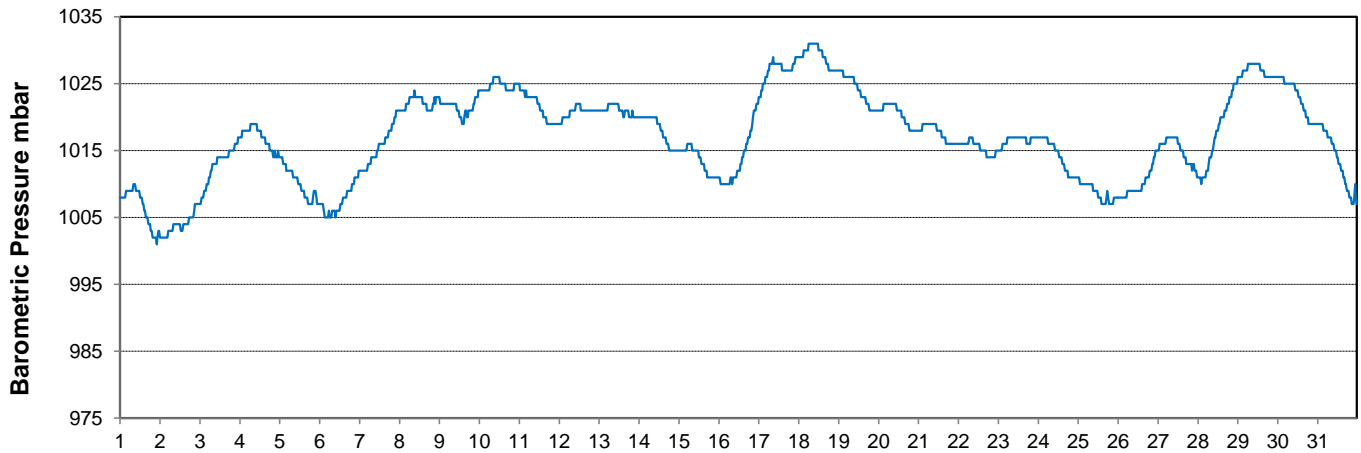
Temperature and Precipitation for May 2015



Relative Humidity for May 2015



Barometric Pressure Corrected to Sea Level for May 2015





SRC CLIMATE REFERENCE STATION DAILY DATA REPORT

CONSERVATION LEARNING CENTRE

Saskatchewan 53.03°N 105.77°W Estab. 2011

Preliminary

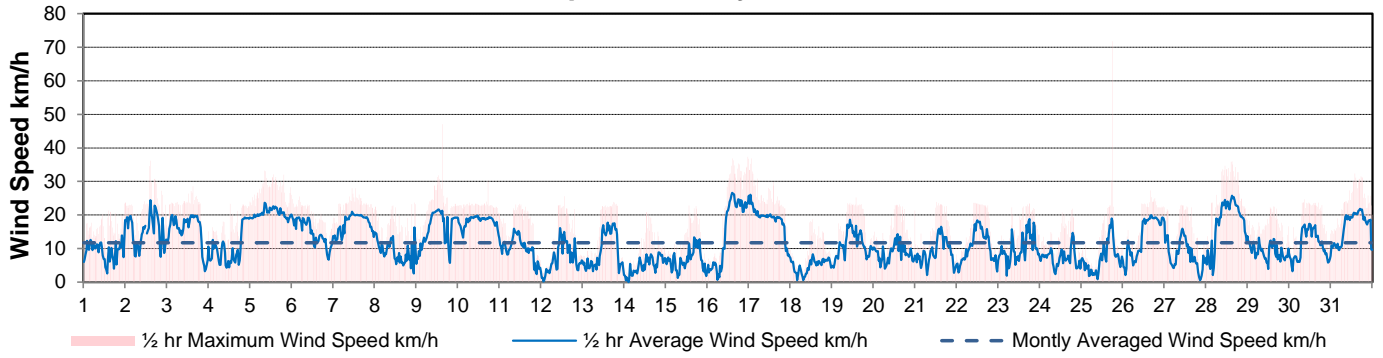
May 2015

Day	Wind Gust			Soil Temperatures at 0900hrs								Soil Moisture 30 cm	Radiation		
	Max	Direction	Time	Surface	5 cm	10 cm	20 cm	50 cm	100 cm	150 cm	300 cm	0900hrs	Bright Sunshine	Global	Diffuse
	km/h			°C	°C	°C	°C	°C	°C	°C	°C	%	hours	MJ/m ²	MJ/m ²
1	23.6	NW	23:36	12.0	3.5	3.5	3.0	1.0	1.0	1.5	3.5	37	11.7	19.7	8.7
2	36.2	NW	14:01	11.5	5.0	4.5	4.0	1.5	1.0	1.5	3.5	37	8.3	19.6	7.5
3	28.6	NW	14:35	8.0	4.5	4.5	4.0	2.0	1.0	1.5	3.5	37	13.4	23.8	6.8
4	24.0	ENE	23:43	7.0	4.0	4.0	4.0	2.5	1.5	1.5	3.5	36	12.0	20.3	8.8
5	33.2	ENE	8:07	9.0	5.5	5.0	5.0	3.0	1.5	1.5	3.5	36	9.7	21.4	7.5
6	25.5	ENE	4:04	5.0	5.5	5.5	5.0	3.0	1.5	1.5	3.0	36	0.0	4.2	3.7
7	27.9	NW	10:54	2.0	4.5	4.5	4.5	3.0	2.0	1.5	3.0	37	1.4	12.9	10.4
8	23.6	WSW	22:41	2.5	3.5	3.5	4.0	3.0	2.0	1.5	3.0	37	12.6	24.0	6.0
9	47.1	W	14:58	7.5	4.5	4.5	4.5	3.0	2.0	1.5	3.0	37	8.7	19.8	5.7
10	30.3	E	17:24	2.0	4.5	4.5	4.5	3.0	2.0	1.5	3.0	36	10.4	22.8	7.4
11	23.3	ENE	11:27	3.0	4.5	4.5	5.0	3.5	2.5	2.0	3.0	36	14.5	26.5	6.9
12	25.6	ESE	13:08	7.5	4.5	4.5	5.0	4.0	2.5	2.0	3.0	36	10.8	19.8	8.9
13	23.9	S	17:44	9.0	4.5	4.5	5.0	4.0	2.5	2.0	3.0	36	8.1	14.5	7.8
14	20.8	ESE	12:48	8.0	4.5	4.5	4.5	4.0	3.0	2.5	3.0	36	14.1	26.5	6.4
15	22.9	WNW	13:12	13.0	5.5	5.5	5.5	4.0	3.0	2.5	3.0	36	14.6	27.3	6.4
16	37.3	NE	23:26	15.0	7.0	6.5	6.5	4.5	3.0	2.5	3.0	36	12.8	21.0	12.2
17	36.9	NE	1:01	0.5	5.5	6.0	6.0	5.0	3.0	2.5	3.0	36	13.7	28.1	6.3
18	18.7	E	12:52	7.0	5.0	5.0	5.5	5.0	3.5	2.5	3.0	36	15.0	28.6	6.2
19	25.2	NW	13:44	14.0	5.5	5.5	6.0	5.0	3.5	2.5	3.0	36	15.4	28.4	4.9
20	23.1	WNW	14:46	15.5	7.0	6.5	6.5	5.0	3.5	3.0	3.0	36	14.8	26.3	7.7
21	23.9	SW	12:15	18.0	7.5	7.5	7.5	5.5	3.5	3.0	3.0	36	14.8	28.0	5.6
22	23.6	WSW	9:46	20.0	8.5	8.0	8.0	6.0	4.0	3.0	3.0	36	15.0	28.0	5.3
23	23.4	NW	17:39	20.5	9.5	9.0	8.5	6.0	4.0	3.0	3.0	36	12.7	27.3	6.8
24	21.9	NW	18:39	15.5	10.5	10.0	9.5	6.5	4.5	3.0	3.0	36	14.0	26.0	7.4
25	71.7	W	17:45	18.0	11.0	10.5	10.0	7.0	4.5	3.0	3.5	35	10.0	18.8	9.1
26	27.3	NE	15:49	17.5	11.0	10.5	10.0	7.5	5.0	3.5	3.5	35	13.8	24.4	9.1
27	23.0	ENE	9:44	11.5	10.5	10.5	10.0	8.0	5.0	3.5	3.5	35	14.9	28.1	6.3
28	36.0	N	14:56	9.0	10.5	10.5	10.0	8.0	5.0	3.5	3.0	35	9.5	22.0	8.9
29	22.5	NE	14:35	6.0	9.0	9.0	9.5	8.0	5.5	4.0	3.5	35	14.9	27.6	7.9
30	24.6	S	8:46	10.0	9.0	9.0	9.0	8.0	5.5	4.0	3.5	34	15.2	28.4	7.6
31	32.4	S	13:43	14.5	9.5	9.5	9.5	8.0	5.5	4.0	3.5	34	11.5	53.9	16.3
Total													368.3	748.0	236.5
Mean				10.3	6.6	6.5	6.4	4.8	3.1	2.5	3.2	35.9			
Extreme	71.7	W	17:45												
Date	25														

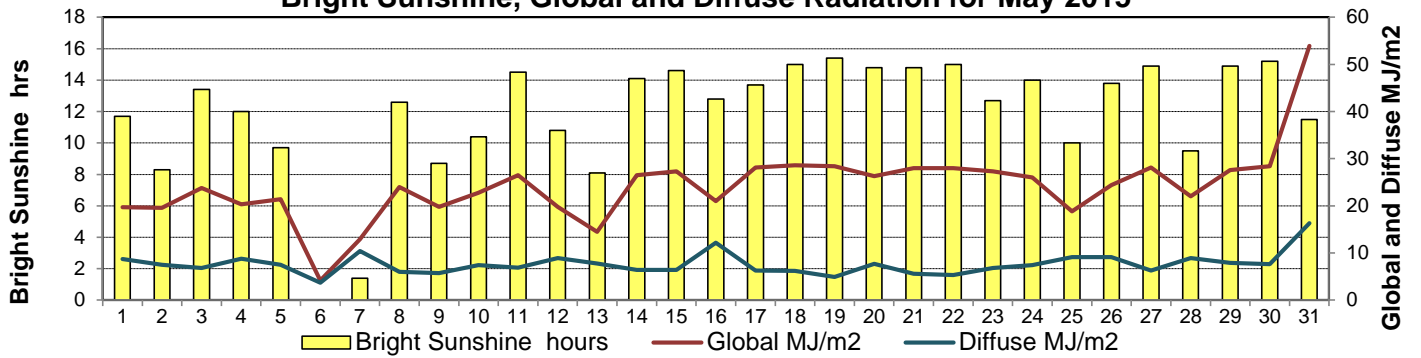
GLOSSARY OF TERMS

Degree-days	Radiation
T _m Mean Temperature	Bright Sunshine is the unobstructed direct radiation from the sun, as opposed to the shading of a location by clouds or by other atmospheric obstructions.
Growing (T _m -5°C); if T _m ≤ 5°C then GDD = 0	
Heating (18°C-T _m); if T _m ≥ 18°C then HDD = 0	
Cooling (T _m -18°C); if T _m ≤ 18°C then CDD = 0	Diffuse is radiation reaching the earth's surface after having been scattered from the direct solar beam
T Trace of Precipitation	Global is the sum of the direct solar and diffuse radiation
SOG Depth of snow-on-the-ground	
Red Cell no data available	Relative Humidity The ratio of the air's water vapour content to its water vapour capacity which changes with temperature.
Red Number manual calculation	Air Pressure The force exerted by the weight of a column of air above a given point
	Wind Gust The daily highest instantaneous value recorded irrespective of direction and/or duration

Wind Speed for May 2015

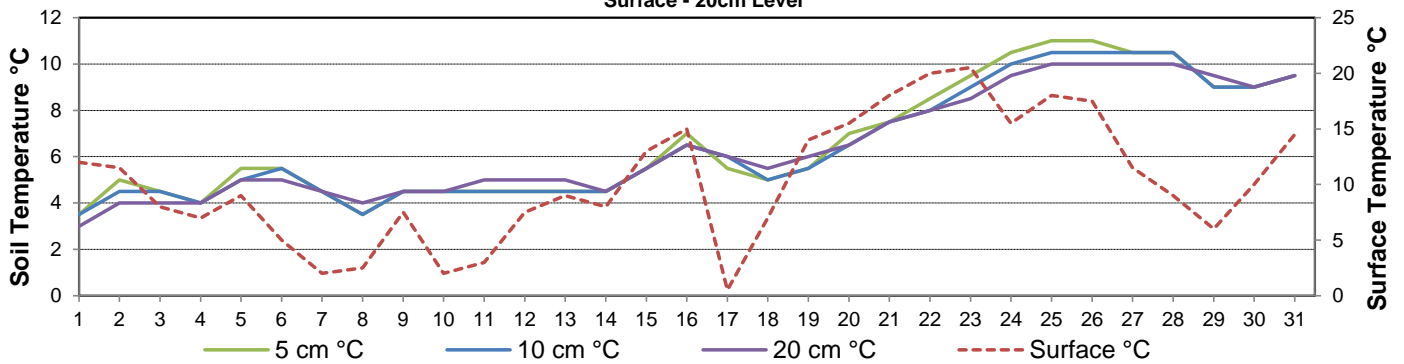


Bright Sunshine, Global and Diffuse Radiation for May 2015



Soil Temperatures for May 2015

Surface - 20cm Level



Soil Temperatures for May 2015

50 - 300cm Level

