



# SRC CLIMATE REFERENCE STATION DAILY DATA REPORT

## CONSERVATION LEARNING CENTRE

Saskatchewan 53.03°N 105.77°W Estab. 2011

Preliminary

**May 2017**

Day	Temperature			Degree-days			Precipitation			Relative Humidity		Station Pressure <i>corrected to sea level</i>	
	Max	Min	Mean	Growing	Heating	Cooling	Weighing Gauge	Tipping Bucket	Notes	Max ½ hr Avg	Min ½ hr Avg	Max ½ hr Avg	Min ½ hr Avg
	°C	°C	°C	5°C base	18°C base	18°C base	mm	mm		%	%	mbar	mbar
1	10.8	0.6	5.7	0.7	12.3	0.0	2.5	2.6		93	57	1011	1008
2	15.9	-0.3	7.8	2.8	10.2	0.0	0.5	0.8		95	38	1014	1011
3	17.3	1.9	9.6	4.6	8.4	0.0	0.0	0.2		91	26	1015	1014
4	24.6	2.7	13.7	8.7	4.3	0.0	0.0	0.0		81	18	1014	1011
5	26.8	5.9	16.4	11.4	1.6	0.0	0.0	0.0		93	20	1011	1007
6	19.7	9.3	14.5	9.5	3.5	0.0	0.0	0.0		71	35	1008	1005
7	19.2	7.0	13.1	8.1	4.9	0.0	13.1	13.2		93	50	1008	1004
8	8.0	5.2	6.6	1.6	11.4	0.0	21.4	18.4		93	85	1013	1007
9	14.2	3.3	8.8	3.8	9.2	0.0	0.0	0.0		94	45	1016	1013
10	15.0	1.9	8.5	3.5	9.5	0.0	0.0	0.0		91	40	1017	1015
11	16.6	3.0	9.8	4.8	8.2	0.0	0.0	0.0		85	32	1019	1016
12	12.5	2.4	7.5	2.5	10.5	0.0	0.0	0.0		83	46	1018	1010
13	10.9	4.4	7.7	2.7	10.3	0.0	2.5	3.6		83	59	1011	1006
14	7.9	3.9	5.9	0.9	12.1	0.0	7.7	7.6		92	74	1009	1002
15	16.0	3.3	9.7	4.7	8.3	0.0	5.3	6.2		88	41	1008	1005
16	10.1	2.5	6.3	1.3	11.7	0.0	0.0	0.2		93	71	1012	1006
17	11.7	0.8	6.3	1.3	11.7	0.0	0.0	0.0		86	29	1021	1013
18	16.0	-1.2	7.4	2.4	10.6	0.0	0.1	0.0		93	20	1024	1020
19	20.1	3.6	11.9	6.9	6.1	0.0	0.0	0.0		67	18	1020	1015
20	22.8	5.3	14.1	9.1	3.9	0.0	0.0	0.0		68	18	1016	1014
21	20.3	8.2	14.3	9.3	3.7	0.0	4.6	4.6		78	31	1017	1014
22	22.6	6.7	14.7	9.7	3.3	0.0	0.0	0.2		83	19	1020	1017
23	23.6	6.4	15.0	10.0	3.0	0.0	0.0	0.0		72	19	1018	999
24	22.5	9.7	16.1	11.1	1.9	0.0	2.5	3.2		85	30	998	985
25	16.9	6.9	11.9	6.9	6.1	0.0	2.5	2.8		89	56	998	989
26	17.4	7.8	12.6	7.6	5.4	0.0	0.0	0.2		88	33	1006	998
27	19.8	5.6	12.7	7.7	5.3	0.0	0.0	0.0		83	35	1012	1006
28	15.9	8.2	12.1	7.1	5.9	0.0	0.1	0.0		79	46	1019	1012
29	17.5	6.4	12.0	7.0	6.0	0.0	0.0	0.0		79	27	1020	1018
30	20.2	2.7	11.5	6.5	6.5	0.0	0.1	0.0		88	20	1021	1016
31	26.7	5.8	16.3	11.3	1.7	0.0	0.0	0.0		75	16	1015	1008
Total				185.5	217.5	0.0	62.9	63.8					
Avg	17.4	4.5	11.0				126.2	Cumulative ppt					
Extreme	26.8	-1.2					21.4	18.4	0	95	16	1024	985
Date	5	18					8	8		2	31	18	24

**SRC proudly recognizes the following CRS supporters:**



Agriculture and Agri-Food Canada

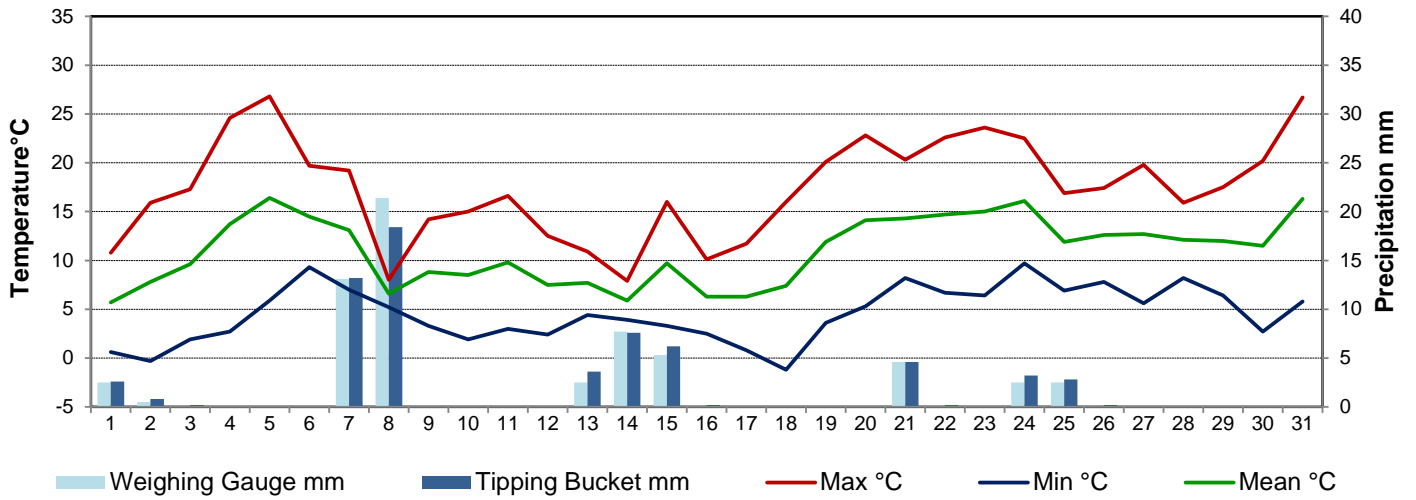
Agriculture et Agroalimentaire Canada



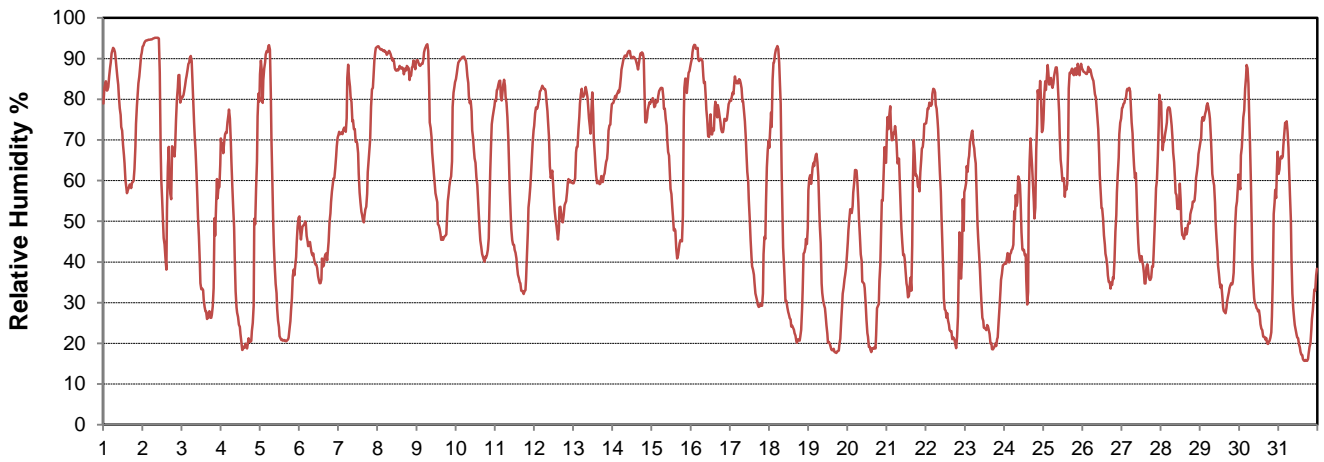
**CAMPBELL SCIENTIFIC**  
WHEN MEASUREMENTS MATTER



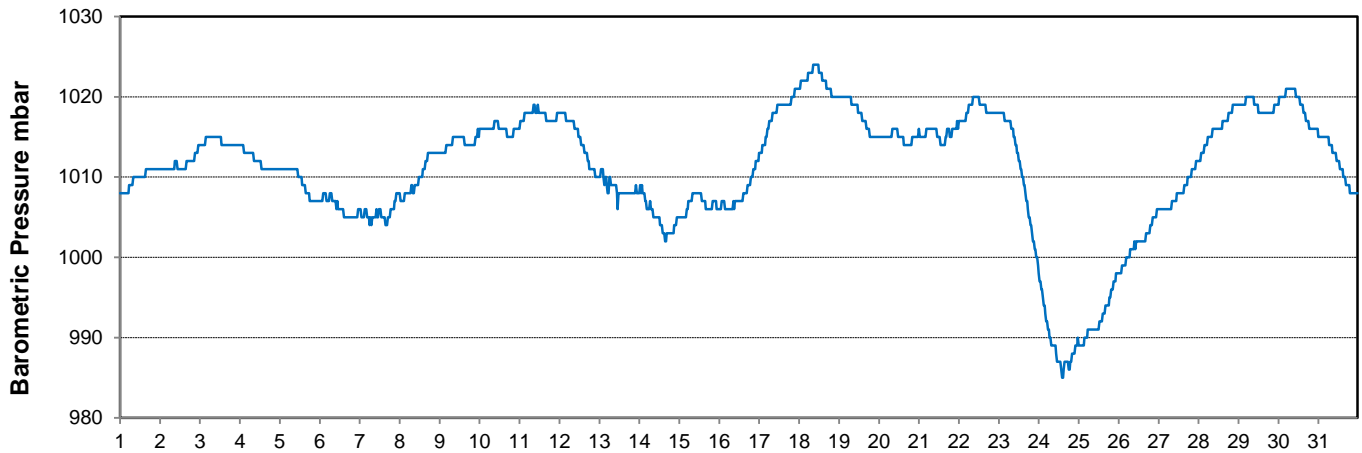
### Temperature and Precipitation for May 2017



### Relative Humidity for May 2017



### Barometric Pressure Corrected to Sea Level for May 2017





# SRC CLIMATE REFERENCE STATION DAILY DATA REPORT

## CONSERVATION LEARNING CENTRE

Saskatchewan 53.03°N 105.77°W Estab. 2011

Preliminary

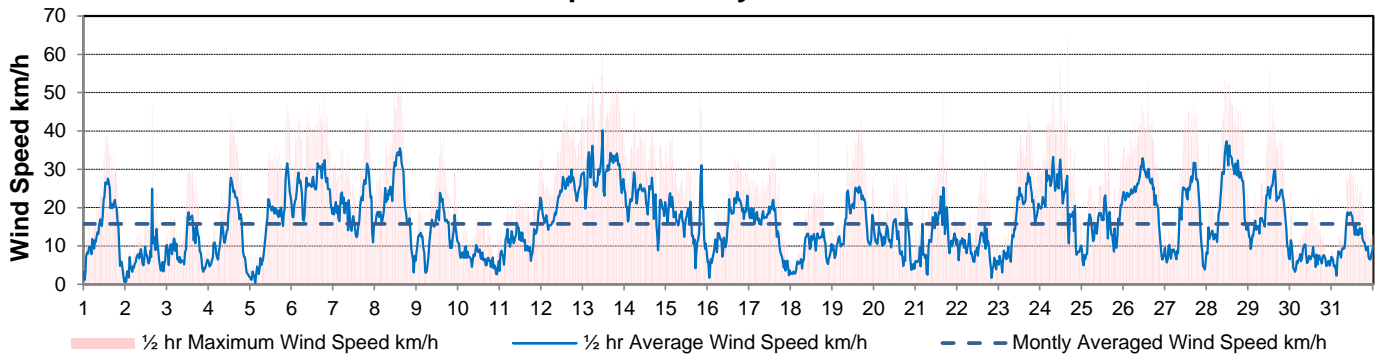
May 2017

Day	Wind Gust			Soil Temperatures at 0900hrs								Soil Moisture 30 cm	Radiation		
	Max	Direction	Time	Surface	5 cm	10 cm	20 cm	50 cm	100 cm	150 cm	300 cm	0900hrs	Bright Sunshine	Global	Diffuse
	km/h			°C	°C	°C	°C	°C	°C	°C	°C	%	hours	MJ/m <sup>2</sup>	MJ/m <sup>2</sup>
1	39.3	NNE	12:31	6.5	2.0	1.5	0.0	0.0	0.5	1.0	3.5	24	6.6	15.6	12.6
2	46.8	NW	15:22	4.5	1.0	0.5	0.0	0.0	0.5	1.0	3.5	24	7.7	17.1	9.3
3	30.5	WNW	13:39	9.5	1.5	1.0	0.5	0.0	0.5	1.0	3.5	24	12.7	21.9	10.7
4	44.3	WNW	12:28	14.5	1.5	1.5	0.5	0.0	0.5	1.0	3.5	25	13.6	23.7	11.8
5	46.0	E	21:00	17.5	2.5	2.0	1.0	0.0	0.5	1.0	3.5	25	12.3	24.4	10.2
6	48.2	E	18:38	14.0	4.5	4.0	2.0	0.0	0.5	1.0	3.5	28	8.2	17.6	12.2
7	44.3	NW	19:03	9.5	4.5	4.0	2.0	0.0	0.5	1.0	3.0	32	4.3	14.7	10.4
8	52.0	NNW	15:10	7.0	5.0	4.5	3.0	0.0	0.5	1.0	3.0	38	0.0	3.1	2.7
9	38.5	N	13:39	9.0	4.0	3.5	3.0	0.0	0.5	1.0	3.0	46	12.6	26.6	11.7
10	18.1	ENE	13:45	5.5	4.0	4.0	3.0	0.0	0.5	1.0	3.0	40	11.3	24.6	13.9
11	33.2	E	23:14	9.5	4.5	4.0	3.5	0.5	0.0	1.0	3.0	38	15.0	27.2	12.9
12	46.6	E	14:34	6.0	4.5	4.5	3.5	1.0	0.5	1.0	3.0	38	5.9	15.9	11.2
13	62.3	E	11:20	5.5	4.5	4.0	3.5	1.0	0.0	1.0	3.0	38	5.6	16.0	12.6
14	45.6	E	5:32	4.5	4.0	4.0	3.0	1.0	0.0	1.0	3.0	38	0.3	4.8	4.1
15	50.5	S	19:25	7.5	3.5	3.0	3.0	0.5	0.0	1.0	3.0	37	9.2	22.0	13.8
16	33.0	NNE	15:27	8.0	4.5	4.0	3.5	1.0	0.5	1.0	3.0	38	4.2	15.8	11.2
17	34.6	NE	13:42	3.5	4.0	4.0	3.5	1.5	0.5	1.0	3.0	37	10.3	23.4	8.0
18	40.6	SSW	15:37	10.0	3.0	3.0	3.5	2.0	1.0	1.0	3.0	36	15.4	29.1	4.9
19	42.6	S	16:21	14.5	4.0	4.0	4.0	2.0	1.0	1.0	3.0	36	13.9	28.2	6.3
20	30.1	NNW	18:06	15.5	5.0	5.0	4.5	2.5	1.0	1.0	3.0	35	14.5	27.1	5.6
21	51.6	N	16:11	16.5	6.5	6.0	5.5	3.0	1.5	1.5	3.0	35	10.0	20.5	9.2
22	31.5	NNE	15:48	14.0	6.5	6.0	5.5	3.0	1.5	1.5	3.0	36	14.7	28.1	4.2
23	44.4	SSW	16:52	17.5	6.5	6.5	6.0	3.5	2.0	1.5	3.0	36	12.9	20.4	10.2
24	64.5	SE	15:11	13.0	7.5	7.0	6.5	4.0	2.0	1.5	3.0	36	2.0	9.3	6.4
25	38.6	S	15:03	11.5	7.0	6.5	6.5	4.0	2.5	1.5	3.0	36	5.2	17.0	8.8
26	53.5	NNW	14:18	10.5	7.5	7.0	6.5	4.5	2.5	1.5	3.0	36	10.5	23.8	15.7
27	47.6	NNW	16:25	14.0	7.0	7.0	7.0	5.0	3.0	2.0	3.0	36	14.7	27.1	11.5
28	53.6	NW	10:03	14.5	8.0	7.5	7.0	5.0	3.0	2.0	3.0	36	9.5	21.7	10.9
29	55.9	N	12:20	13.0	7.5	7.5	7.0	5.0	3.0	2.0	3.0	36	16.2	29.9	10.7
30	25.0	NE	0:22	15.0	7.5	7.0	7.0	5.5	3.5	2.5	3.0	35	16.1	29.6	10.7
31	32.7	SW	11:14	18.5	8.0	8.0	7.5	5.5	3.5	2.5	3.0	35	15.2	29.3	9.3
Total													310.6	655.5	303.7
Mean				11.0	4.9	4.6	4.0	2.0	1.2	1.3	3.1	35	26 May 2017 installed new actuator and removed rubber gaskets from actuators from the diffuse pynomometer autoband		
Extreme	64.5	SE	15:11												
Date	24														

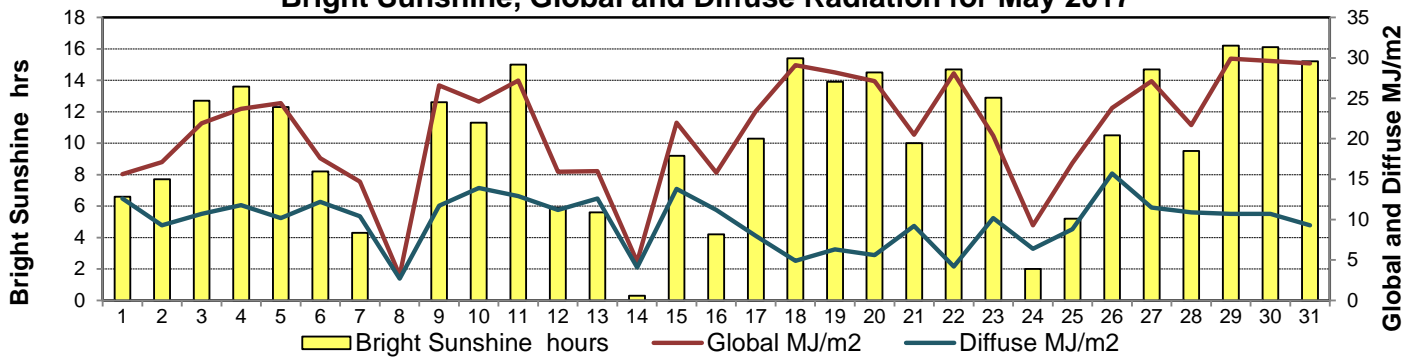
### GLOSSARY OF TERMS

<b>Degree-days</b>	<b>Radiation</b>
Tm Mean Temperature	Bright Sunshine is the unobstructed direct radiation from the sun, as opposed to the shading of a location by clouds or by other atmospheric obstructions.
Growing (Tm-5°C); if Tm ≤ 5°C then GDD = 0	
Heating (18°C-Tm); if Tm ≥ 18°C then HDD = 0	
Cooling (Tm-18°C); if Tm ≤ 18°C then CDD = 0	Diffuse is radiation reaching the earth's surface after having been scattered from the direct solar beam
T Trace of Precipitation	Global is the sum of the direct solar and diffuse radiation
<b>SOG</b> Depth of snow-on-the-ground	
<b>Red Cell</b> no data available	<b>Relative Humidity</b> The ratio of the air's water vapour content to its water vapour capacity which changes with temperature.
<b>Red Number</b> manual calculation	<b>Air Pressure</b> The force exerted by the weight of a column of air above a given point
	<b>Wind Gust</b> The daily highest instantaneous value recorded irrespective of direction and/or duration

### Wind Speed for May 2017

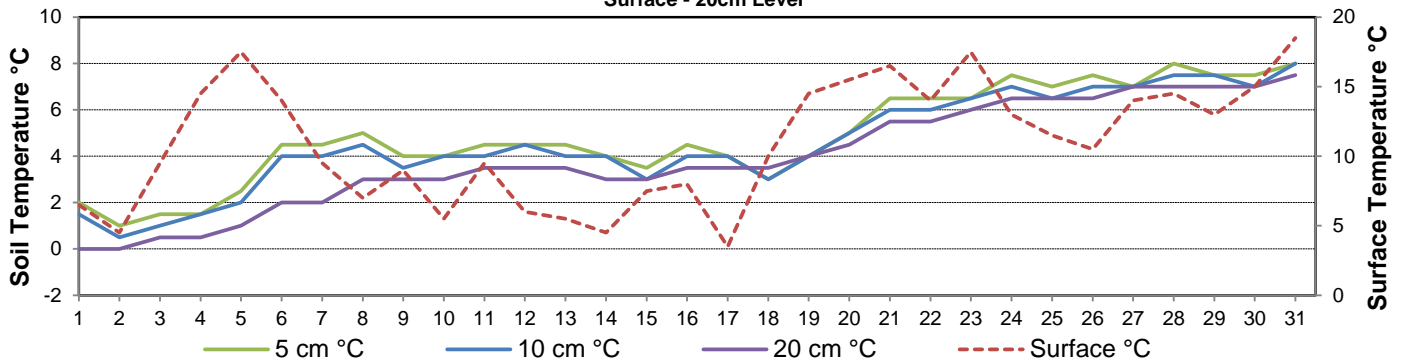


### Bright Sunshine, Global and Diffuse Radiation for May 2017



### Soil Temperatures for May 2017

Surface - 20cm Level



### Soil Temperatures for May 2017

50 - 300cm Level

