



SRC CLIMATE REFERENCE STATION DAILY DATA REPORT

CONSERVATION LEARNING CENTRE

Saskatchewan 53.03°N 105.77°W Estab. 2011

Preliminary

May 2018

Day	Temperature			Degree-days			Precipitation			Relative Humidity		Station Pressure <i>corrected to sea level</i>	
	Max	Min	Mean	Growing	Heating	Cooling	Weighing Gauge	Tipping Bucket	Notes	Max ½ hr Avg	Min ½ hr Avg	Max ½ hr Avg	Min ½ hr Avg
	°C	°C	°C	5°C base	18°C base	18°C base	mm	mm		%	%	mbar	mbar
1	16.2	-2.5	6.9	1.9	11.1	0.0	0.0	0.0		88	20	1010	1006
2	17.4	2.6	10.0	5.0	8.0	0.0	0.0	0.0		94	21	1008	1002
3	18.3	6.1	12.2	7.2	5.8	0.0	0.7	0.8		76	26	1010	1002
4	18.5	0.1	9.3	4.3	8.7	0.0	0.0	0.0		88	27	1014	1010
5	22.6	3.2	12.9	7.9	5.1	0.0	0.0	0.0		91	23	1017	1013
6	26.5	3.0	14.8	9.8	3.2	0.0	0.0	0.0		89	14	1018	1011
7	24.3	5.3	14.8	9.8	3.2	0.0	0.0	0.0		84	22	1019	1011
8	18.9	3.5	11.2	6.2	6.8	0.0	0.8	0.8		92	21	1019	1010
9	11.8	0.2	6.0	1.0	12.0	0.0	0.0	0.0		93	19	1020	1010
10	12.6	-3.0	4.8	0.0	13.2	0.0	0.0	0.0		93	19	1020	1016
11	13.9	4.9	9.4	4.4	8.6	0.0	0.0	0.0		70	38	1017	1015
12	23.4	1.2	12.3	7.3	5.7	0.0	0.0	0.0		90	22	1017	1007
13	23.3	8.6	16.0	11.0	2.0	0.0	0.0	0.0		63	17	1016	1007
14	22.6	1.6	12.1	7.1	5.9	0.0	0.0	0.0		89	19	1018	1007
15	29.6	8.6	19.1	14.1	0.0	1.1	0.0	0.0		71	11	1010	1004
16	14.1	6.5	10.3	5.3	7.7	0.0	0.0	0.0		76	42	1018	1010
17	14.4	4.2	9.3	4.3	8.7	0.0	0.0	0.0		76	39	1023	1018
18	20.1	0.7	10.4	5.4	7.6	0.0	0.0	0.0		91	19	1024	1021
19	23.2	1.5	12.4	7.4	5.6	0.0	0.0	0.0		93	18	1023	1018
20	24.0	5.7	14.9	9.9	3.1	0.0	0.0	0.0		63	16	1019	1009
21	29.5	11.1	20.3	15.3	0.0	2.3	0.0	0.0		72	18	1009	1005
22	27.5	9.2	18.4	13.4	0.0	0.4	1.2	0.2		90	27	1013	1008
23	29.9	8.6	19.3	14.3	0.0	1.3	0.0	0.0		85	20	1013	1009
24	22.6	14.8	18.7	13.7	0.0	0.7	0.5	0.6		89	53	1009	1002
25	19.9	10.5	15.2	10.2	2.8	0.0	1.0	0.8		93	67	1004	1001
26	23.0	12.5	17.8	12.8	0.2	0.0	0.3	0.6		91	51	1007	1003
27	23.9	9.1	16.5	11.5	1.5	0.0	0.0	0.0		92	21	1016	1007
28	29.1	5.6	17.4	12.4	0.6	0.0	0.0	0.0		87	20	1017	1005
29	21.2	12.6	16.9	11.9	1.1	0.0	0.8	0.4		83	34	1008	1004
30	19.8	7.9	13.9	8.9	4.1	0.0	7.0	6.8		87	30	1009	1004
31	12.1	7.6	9.9	4.9	8.1	0.0	0.2	0.2		90	71	1016	1007
Total				258.6	150.4	5.8	12.5	11.2					
Avg	21.1	5.5	13.3				73.8	Cumulative ppt					
Extreme	29.9	-3.0					7.0	6.8	0	94	11	1024	1001
Date	23	10					30	30		2	15	18	25

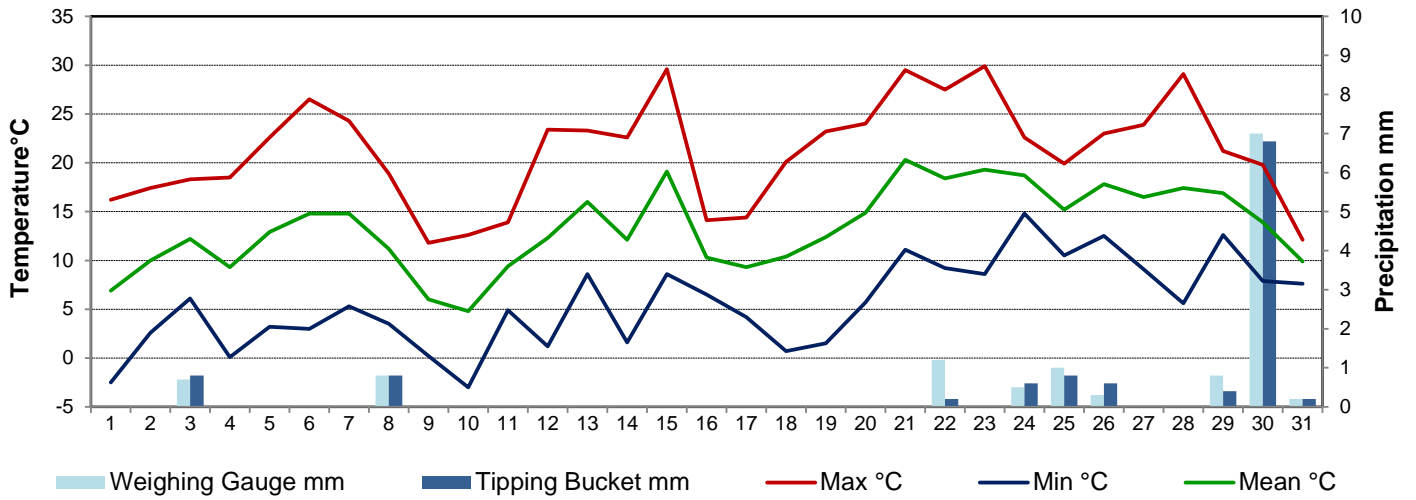
SRC proudly recognizes the following CRS supporters:



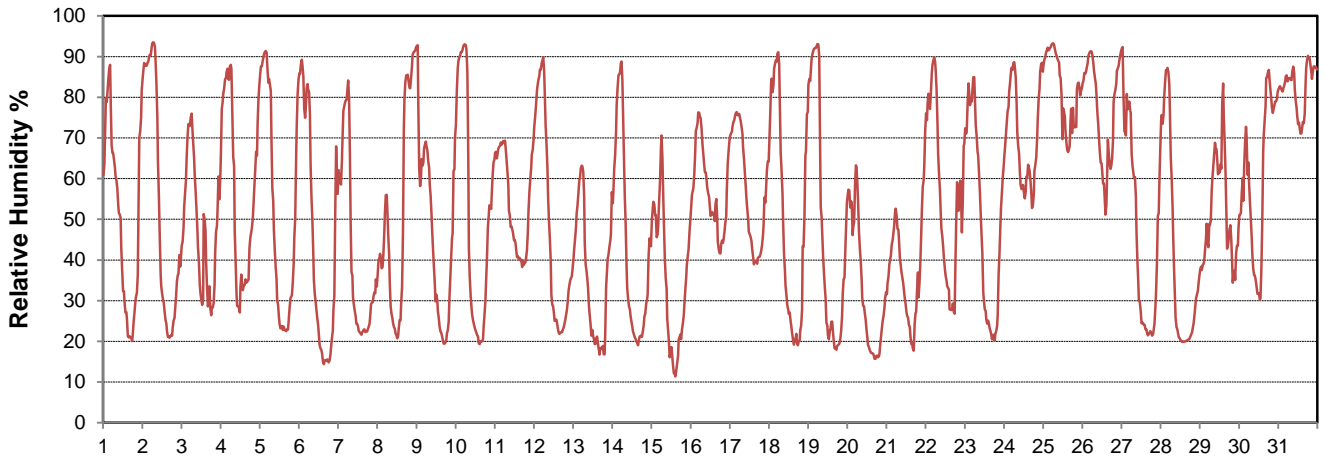
Agriculture and Agri-Food Canada
Agriculture et Agroalimentaire Canada



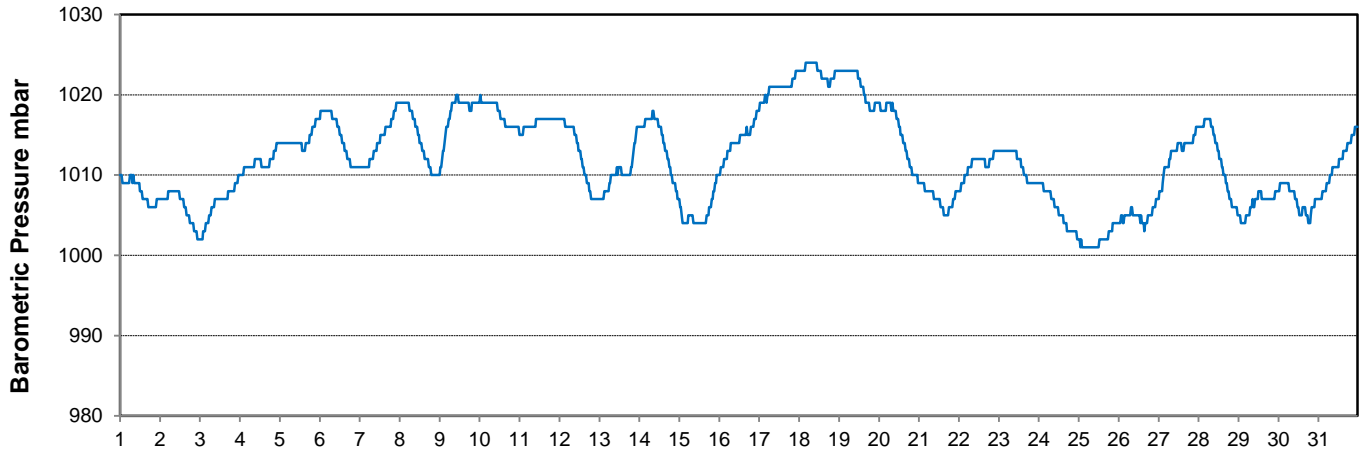
Temperature and Precipitation for May 2018



Relative Humidity for May 2018



Barometric Pressure Corrected to Sea Level for May 2018





SRC CLIMATE REFERENCE STATION DAILY DATA REPORT

CONSERVATION LEARNING CENTRE

Saskatchewan 53.03°N 105.77°W Estab. 2011

Preliminary

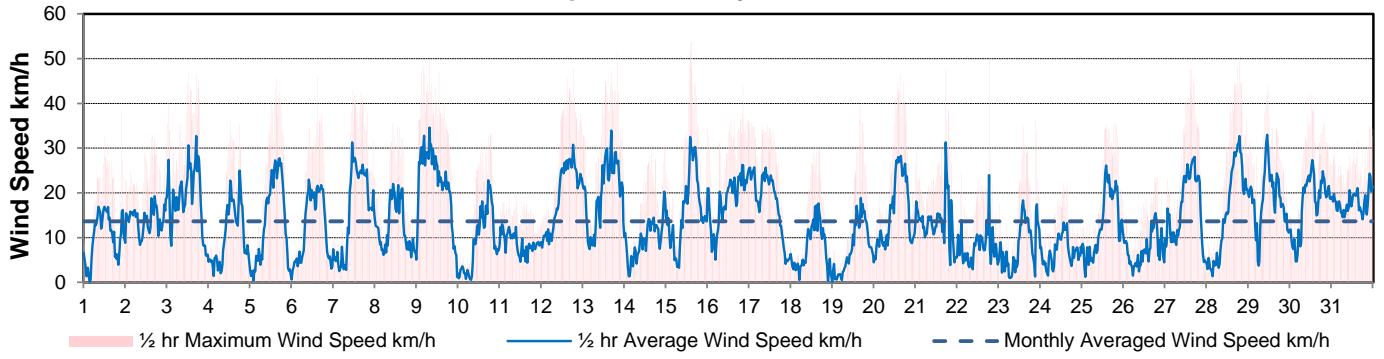
May 2018

Day	Wind Gust			Soil Temperatures at 0900hrs								Soil Moisture 30 cm	Radiation		
	Max	Direction	Time	Surface	5 cm	10 cm	20 cm	50 cm	100 cm	150 cm	300 cm	0900hrs	Bright Sunshine	Global	Diffuse
	km/h			°C	°C	°C	°C	°C	°C	°C	°C	%	hours	MJ/m ²	MJ/m ²
1	38.4	NW	21:47	7.0	1.5	2.0	2.0	0.0	0.0	1.0	3.0	38	12.1	24.9	4.0
2	32.9	W	15:23	8.0	4.0	3.5	2.5	0.0	0.0	1.0	3.0	37	7.7	19.8	6.3
3	46.7	NW	12:05	13.0	4.5	4.0	3.5	0.0	0.0	1.0	3.0	37	11.5	19.7	6.3
4	36.2	W	12:15	13.0	3.5	3.5	3.0	0.5	0.0	1.0	3.0	36	6.4	14.0	9.6
5	45.6	NNW	14:36	15.5	4.0	3.5	3.0	0.5	0.0	1.0	3.0	36	12.3	21.7	8.6
6	45.9	W	14:31	16.0	4.0	3.5	3.5	0.5	0.0	1.0	3.0	35	13.9	24.5	7.3
7	42.9	NE	10:34	18.0	5.0	5.0	4.0	1.0	0.0	1.0	3.0	35	13.6	25.5	4.8
8	35.6	S	10:06	14.5	5.5	5.0	4.5	1.0	0.0	1.0	3.0	35	7.5	14.5	7.5
9	49.8	N	7:06	5.5	4.5	4.5	4.0	1.0	0.0	1.0	3.0	34	15.1	28.1	3.3
10	33.2	S	18:54	9.0	3.0	3.0	3.5	1.0	0.0	1.0	3.0	34	11.7	21.5	10.1
11	19.8	E	9:18	11.0	4.5	4.5	3.5	1.0	0.0	1.0	3.0	34	6.4	16.8	11.6
12	48.0	SW	18:18	13.0	4.0	4.0	3.5	1.5	0.0	1.0	3.0	34	14.9	26.8	5.1
13	51.5	N	19:51	19.0	6.0	5.5	4.5	1.5	0.0	1.0	3.0	34	14.0	24.2	7.5
14	31.2	ESE	23:16	15.0	5.5	5.0	5.0	2.0	0.0	1.0	3.0	33	11.1	23.9	5.7
15	53.7	N	14:11	21.0	6.5	6.5	5.5	2.0	0.0	1.0	3.0	33	13.7	24.4	6.8
16	44.0	E	20:22	11.0	7.0	6.5	6.0	2.5	0.0	1.0	3.0	33	1.8	6.5	5.5
17	35.7	ENE	0:04	8.0	5.5	5.5	5.0	2.5	0.0	1.0	3.0	33	4.3	14.9	11.7
18	30.1	N	14:53	13.0	5.0	4.5	4.5	2.0	0.0	1.0	3.0	33	13.5	26.5	6.2
19	39.3	SW	15:44	14.0	5.5	5.0	5.0	2.5	0.0	1.0	3.0	32	13.5	24.0	7.0
20	46.4	SW	15:21	17.0	6.0	5.5	5.5	2.5	0.5	1.0	2.5	32	15.5	28.6	3.7
21	47.9	NNW	17:05	21.0	7.5	7.0	6.0	3.0	1.0	1.0	2.5	32	12.3	25.4	6.4
22	50.5	E	18:13	19.0	8.5	8.0	7.0	3.5	1.5	1.0	2.5	32	11.8	24.4	6.9
23	36.2	SSE	21:15	19.5	9.5	9.0	8.0	4.5	1.5	1.0	2.5	32	13.5	26.4	5.9
24	21.9	ESE	13:01	20.0	11.5	11.0	9.0	5.0	2.0	1.0	2.5	32	3.3	11.9	9.2
25	35.6	NW	19:28	16.0	10.5	10.0	9.5	5.5	2.5	1.5	2.5	32	2.3	11.4	9.0
26	23.5	ENE	18:58	17.0	11.0	10.5	9.5	6.0	3.0	1.5	2.5	32	4.8	15.9	8.9
27	47.6	W	14:58	15.5	10.5	10.5	10.0	6.5	3.0	1.5	2.5	32	13.8	27.5	5.5
28	50.0	S	18:42	21.5	10.0	10.0	9.5	7.0	3.5	2.0	2.5	31	14.7	28.6	4.1
29	44.2	N	10:50	20.5	12.0	11.5	10.5	7.0	4.0	2.0	2.5	31	9.2	18.2	8.7
30	42.0	ENE	12:18	17.5	10.0	10.0	10.0	7.5	4.0	2.5	2.5	31	6.8	13.4	5.9
31	34.8	ENE	21:50	9.0	10.0	9.5	9.5	7.0	4.0	2.5	2.5	33	0.0	7.7	6.7
Total													313.0	641.6	215.8
Mean				14.8	6.6	6.4	5.8	2.8	1.0	1.2	2.8	33			
Extreme	53.7	N	14:11												
Date	15														

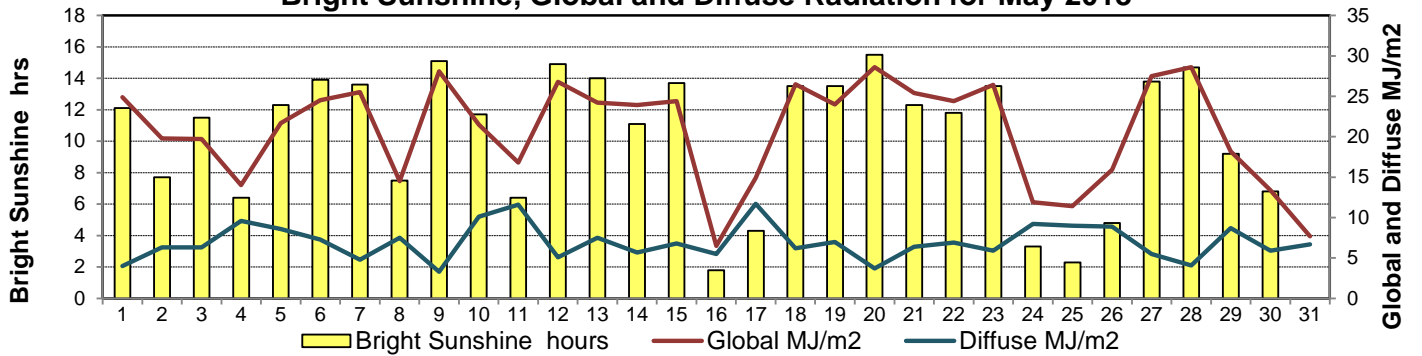
GLOSSARY OF TERMS

Degree-days	Radiation
Tm Mean Temperature	Bright Sunshine is the unobstructed direct radiation from the sun, as opposed to the shading of a location by clouds or by other atmospheric obstructions.
Growing (Tm-5°C); if Tm ≤ 5°C then GDD = 0	
Heating (18°C-Tm); if Tm ≥ 18°C then HDD = 0	Diffuse is radiation reaching the earth's surface after having been scattered from the direct solar beam
Cooling (Tm-18°C); if Tm ≤ 18°C then CDD = 0	Global is the sum of the direct solar and diffuse radiation
T Trace of Precipitation	Relative Humidity The ratio of the air's water vapour content to its water vapour capacity which changes with temperature.
SOG Depth of snow-on-the-ground	
Red Cell no data available	Air Pressure The force exerted by the weight of a column of air above a given point
Red Number manual calculation	Wind Gust The daily highest instantaneous value recorded irrespective of direction and/or duration

Wind Speed for May 2018

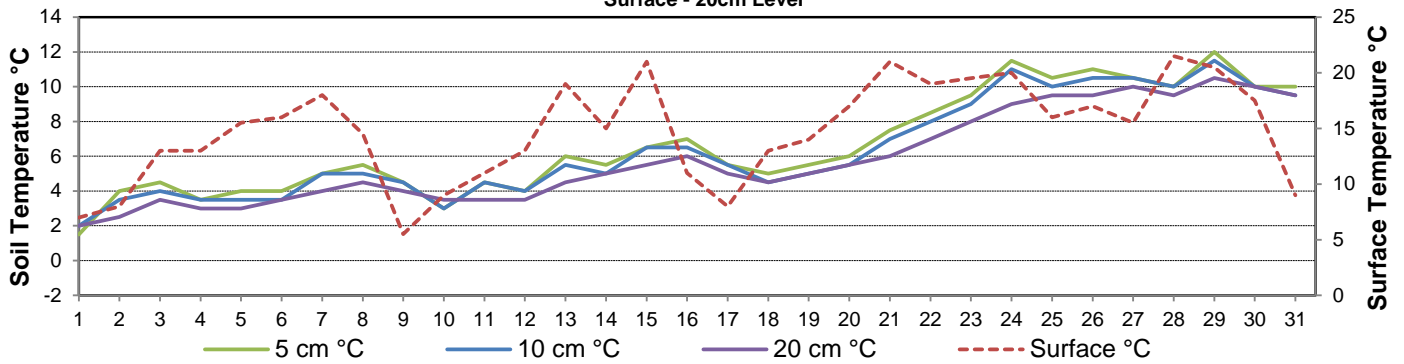


Bright Sunshine, Global and Diffuse Radiation for May 2018



Soil Temperatures for May 2018

Surface - 20cm Level



Soil Temperatures for May 2018

50 - 300cm Level

