



SRC CLIMATE REFERENCE STATION DAILY DATA REPORT

CONSERVATION LEARNING CENTRE

Saskatchewan 53.03°N 105.77°W Estab. 2011

Preliminary

May 2019

| Day | Temperature | | | Degree-days | | | Precipitation | | | Relative Humidity | | Station Pressure <i>corrected to sea level</i> | |
|---------|-------------|------|------|-------------|-----------|-----------|----------------|----------------|-------|-------------------|--------------|---|--------------|
| | Max | Min | Mean | Growing | Heating | Cooling | Weighing Gauge | Tipping Bucket | Notes | Max ½ hr Avg | Min ½ hr Avg | Max ½ hr Avg | Min ½ hr Avg |
| | °C | °C | °C | 5°C base | 18°C base | 18°C base | mm | mm | | % | % | mbar | mbar |
| 1 | 5.6 | -8.8 | -1.6 | 0.0 | 19.6 | 0.0 | 0.0 | 0.0 | | 91 | 34 | 1020 | 1010 |
| 2 | 7.7 | -3.0 | 2.4 | 0.0 | 15.6 | 0.0 | 4.8 | 4.4 | | 100 | 65 | 1011 | 1007 |
| 3 | 7.2 | -5.2 | 1.0 | 0.0 | 17.0 | 0.0 | 1.8 | 0.8 | | 100 | 66 | 1011 | 1005 |
| 4 | 4.6 | -3.8 | 0.4 | 0.0 | 17.6 | 0.0 | 0.0 | 0.0 | | 94 | 51 | 1015 | 1009 |
| 5 | 5.6 | -3.8 | 0.9 | 0.0 | 17.1 | 0.0 | 0.0 | 0.0 | | 98 | 51 | 1019 | 1015 |
| 6 | 12.3 | -5.9 | 3.2 | 0.0 | 14.8 | 0.0 | 0.0 | 0.0 | | 100 | 25 | 1021 | 1017 |
| 7 | 11.5 | 1.9 | 6.7 | 1.7 | 11.3 | 0.0 | 0.0 | 0.0 | | 73 | 26 | 1023 | 1016 |
| 8 | 12.5 | -3.4 | 4.6 | 0.0 | 13.4 | 0.0 | 0.0 | 0.0 | | 99 | 25 | 1027 | 1023 |
| 9 | 16.4 | -3.0 | 6.7 | 1.7 | 11.3 | 0.0 | 0.0 | 0.0 | | 83 | 22 | 1024 | 1012 |
| 10 | 13.2 | 4.5 | 8.9 | 3.9 | 9.1 | 0.0 | 7.3 | 7.0 | | 95 | 35 | 1011 | 1005 |
| 11 | 16.5 | 4.3 | 10.4 | 5.4 | 7.6 | 0.0 | 0.0 | 0.2 | | 90 | 36 | 1012 | 1008 |
| 12 | 22.4 | 2.0 | 12.2 | 7.2 | 5.8 | 0.0 | 0.0 | 0.0 | | 93 | 26 | 1007 | 1000 |
| 13 | 20.2 | 5.0 | 12.6 | 7.6 | 5.4 | 0.0 | 0.0 | 0.0 | | 85 | 18 | 1012 | 1002 |
| 14 | 18.9 | 0.1 | 9.5 | 4.5 | 8.5 | 0.0 | 0.0 | 0.0 | | 100 | 30 | 1016 | 1010 |
| 15 | 12.7 | 4.5 | 8.6 | 3.6 | 9.4 | 0.0 | 8.8 | 8.2 | | 96 | 43 | 1015 | 1005 |
| 16 | 13.2 | 0.3 | 6.8 | 1.8 | 11.2 | 0.0 | 0.0 | 0.0 | | 91 | 32 | 1019 | 1015 |
| 17 | 16.7 | -1.2 | 7.8 | 2.8 | 10.2 | 0.0 | 0.0 | 0.0 | | 100 | 26 | 1019 | 1016 |
| 18 | 15.5 | 0.7 | 8.1 | 3.1 | 9.9 | 0.0 | 0.0 | 0.0 | | 82 | 27 | 1023 | 1019 |
| 19 | 16.7 | 0.2 | 8.5 | 3.5 | 9.5 | 0.0 | 0.0 | 0.0 | | 99 | 31 | 1024 | 1019 |
| 20 | 19.8 | 3.3 | 11.6 | 6.6 | 6.4 | 0.0 | 0.0 | 0.0 | | 90 | 22 | 1021 | 1016 |
| 21 | 22.9 | 4.4 | 13.7 | 8.7 | 4.3 | 0.0 | 0.0 | 0.0 | | 96 | 19 | 1017 | 1015 |
| 22 | 24.8 | 4.9 | 14.9 | 9.9 | 3.1 | 0.0 | 0.0 | 0.0 | | 90 | 20 | 1016 | 1014 |
| 23 | 25.3 | 6.0 | 15.7 | 10.7 | 2.3 | 0.0 | 0.0 | 0.0 | | 96 | 19 | 1017 | 1010 |
| 24 | 24.4 | 6.6 | 15.5 | 10.5 | 2.5 | 0.0 | 6.2 | 5.6 | | 91 | 28 | 1010 | 1004 |
| 25 | 14.2 | 6.7 | 10.5 | 5.5 | 7.5 | 0.0 | 1.4 | 1.4 | | 98 | 46 | 1018 | 1008 |
| 26 | 18.1 | 5.8 | 12.0 | 7.0 | 6.0 | 0.0 | 1.8 | 2.4 | | 94 | 31 | 1021 | 1018 |
| 27 | 24.9 | 1.7 | 13.3 | 8.3 | 4.7 | 0.0 | 0.0 | 0.0 | | 84 | 22 | 1018 | 1010 |
| 28 | 27.9 | 6.5 | 17.2 | 12.2 | 0.8 | 0.0 | 0.0 | 0.0 | | 91 | 21 | 1011 | 1007 |
| 29 | 31.2 | 14.6 | 22.9 | 17.9 | 0.0 | 4.9 | 0.0 | 0.0 | | 50 | 15 | 1008 | 1004 |
| 30 | 24.4 | 8.9 | 16.7 | 11.7 | 1.3 | 0.0 | 0.0 | 0.0 | | 92 | 30 | 1016 | 1004 |
| 31 | 19.3 | 8.5 | 13.9 | 8.9 | 4.1 | 0.0 | 0.0 | 0.0 | | 82 | 37 | 1020 | 1014 |
| Total | | | | 164.7 | 267.3 | 4.9 | 32.1 | 30.0 | | | | | |
| Avg | 17.0 | 2.0 | 9.5 | | | | 76.6 | Cumulative ppt | | | | | |
| Extreme | 31.2 | -8.8 | | | | | 8.8 | 8.2 | 0 | 100 | 15 | 1027 | 1000 |
| Date | 29 | 1 | | | | | 15 | 15 | | 2 | 29 | 8 | 12 |

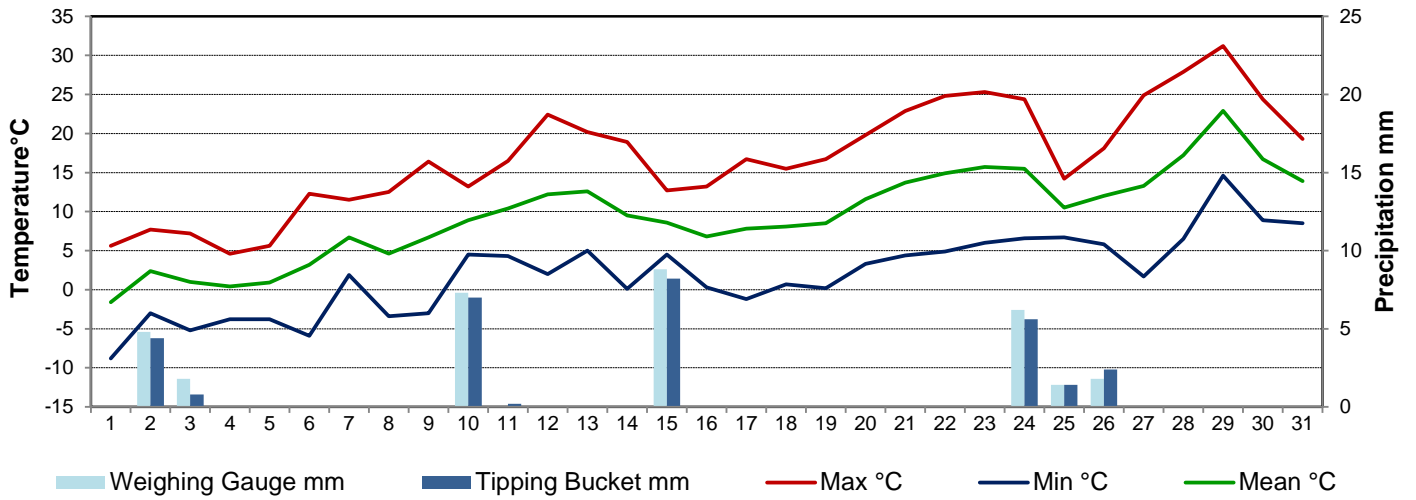
SRC proudly recognizes the following CRS supporters:



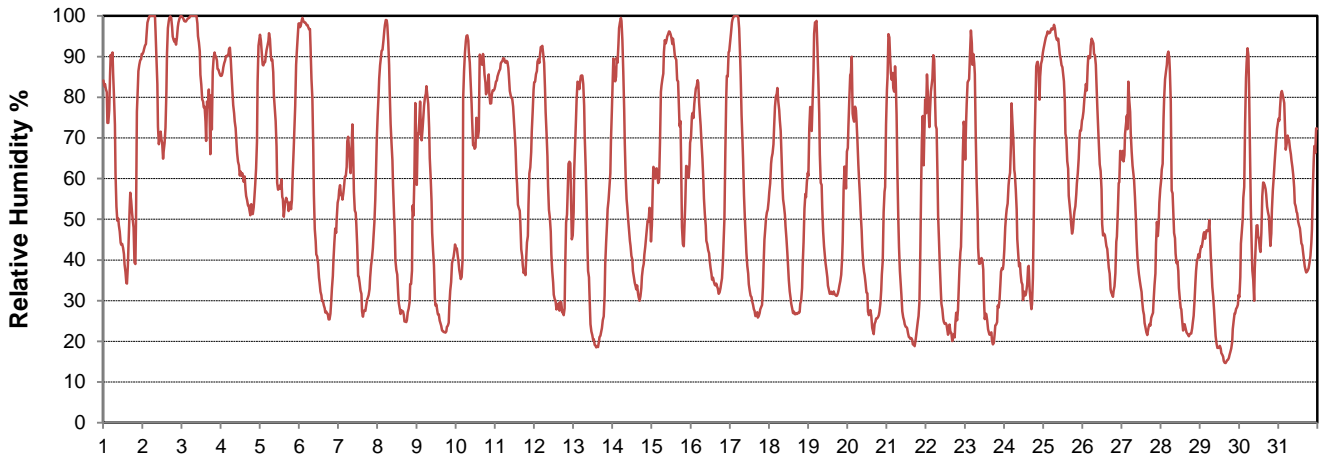
Agriculture and Agri-Food Canada
Agriculture et Agroalimentaire Canada



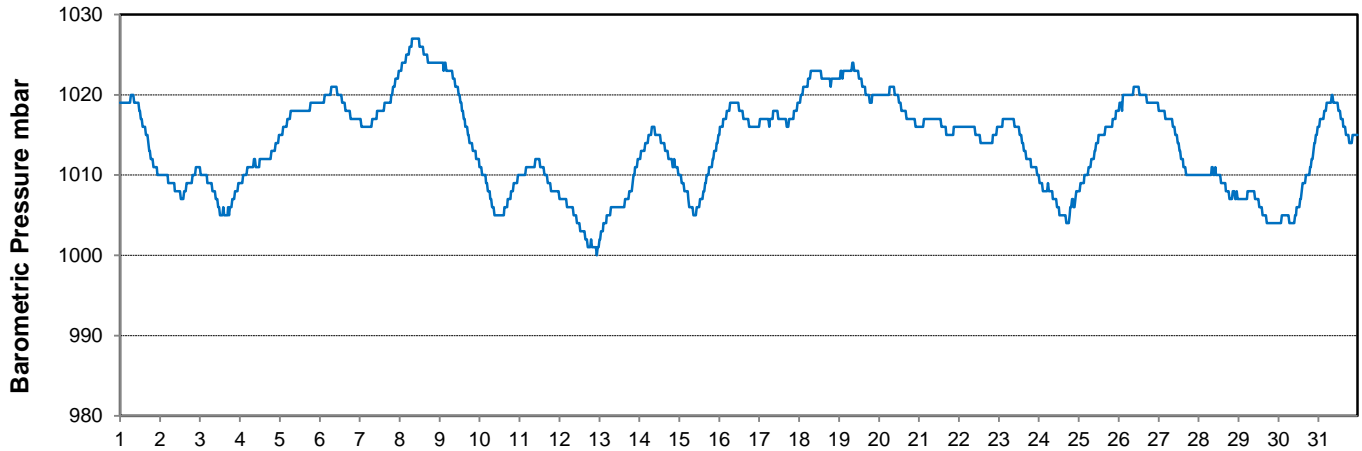
Temperature and Precipitation for May 2019



Relative Humidity for May 2019



Barometric Pressure Corrected to Sea Level for May 2019





SRC CLIMATE REFERENCE STATION DAILY DATA REPORT

CONSERVATION LEARNING CENTRE

Saskatchewan 53.03°N 105.77°W Estab. 2011

Preliminary

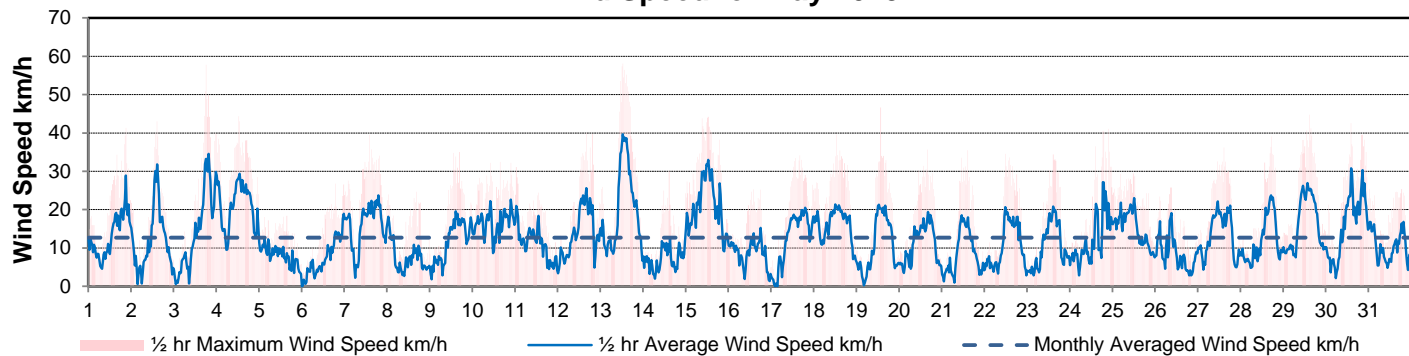
May 2019

| Day | Wind Gust | | | Soil Temperatures at 0900hrs | | | | | | | | Radiation | | | | |
|---------|-----------|-----------|-------|------------------------------|------|-------|-------|-------|--------|--------|--------|-----------------|----------|------------|-------------------|-------------------|
| | Max | Direction | Time | Surface | 5 cm | 10 cm | 20 cm | 50 cm | 100 cm | 150 cm | 300 cm | Bright Sunshine | Possible | % Possible | Global | Diffuse |
| | km/h | | | °C | °C | °C | °C | °C | °C | °C | °C | hours | hours | | MJ/m ² | MJ/m ² |
| 1 | 41.3 | S | 20:37 | -2.5 | 1.0 | 1.0 | 1.5 | 0.5 | 0.5 | 1.0 | 3.0 | 9.9 | 15.0 | 65.9 | 21.0 | 6.9 |
| 2 | 43.0 | NNW | 14:11 | 4.5 | 2.0 | 1.5 | 1.5 | 0.5 | 0.5 | 1.0 | 3.0 | 2.2 | 15.1 | 14.6 | 10.3 | 7.4 |
| 3 | 57.8 | NNE | 17:53 | 0.5 | 1.0 | 1.5 | 1.5 | 1.0 | 0.5 | 1.0 | 3.0 | 1.5 | 15.1 | 9.9 | 8.6 | 7.2 |
| 4 | 44.4 | NNW | 12:20 | 1.5 | 0.5 | 1.0 | 1.0 | 1.0 | 1.0 | 1.0 | 3.0 | 8.4 | 15.2 | 55.2 | 18.9 | 9.0 |
| 5 | 18.4 | NNE | 15:18 | 1.0 | 1.0 | 1.0 | 1.5 | 1.0 | 1.0 | 1.0 | 3.0 | 2.8 | 15.3 | 18.3 | 11.9 | 9.1 |
| 6 | 26.8 | SSW | 18:42 | 3.0 | 0.5 | 1.0 | 1.5 | 1.0 | 1.0 | 1.0 | 3.0 | 13.3 | 15.3 | 86.8 | 25.0 | 5.9 |
| 7 | 39.5 | N | 13:38 | 6.5 | 2.5 | 2.5 | 2.0 | 1.0 | 1.0 | 1.5 | 3.0 | 12.5 | 15.4 | 81.2 | 24.8 | 5.4 |
| 8 | 24.7 | N | 16:02 | 3.5 | 2.5 | 2.5 | 2.5 | 1.5 | 1.0 | 1.5 | 3.0 | 14.5 | 15.4 | 93.9 | 28.2 | 3.3 |
| 9 | 35.0 | SSW | 16:24 | 9.0 | 2.5 | 2.5 | 3.0 | 2.0 | 1.0 | 1.5 | 3.0 | 9.5 | 15.5 | 61.3 | 21.4 | 9.5 |
| 10 | 32.5 | NNW | 15:06 | 7.0 | 4.0 | 4.0 | 3.5 | 2.0 | 1.5 | 1.5 | 3.0 | 4.0 | 15.6 | 25.7 | 11.8 | 7.1 |
| 11 | 31.1 | NNW | 0:28 | 8.0 | 5.0 | 5.0 | 4.0 | 2.5 | 1.5 | 1.5 | 3.0 | 5.5 | 15.6 | 35.2 | 15.2 | 8.9 |
| 12 | 40.0 | SSW | 15:53 | 13.0 | 4.5 | 4.5 | 4.5 | 3.0 | 1.5 | 1.5 | 3.0 | 6.9 | 15.7 | 44.0 | 15.6 | 10.9 |
| 13 | 58.1 | E | 12:13 | 16.0 | 5.5 | 5.5 | 5.0 | 3.0 | 2.0 | 1.5 | 3.0 | 15.4 | 15.7 | 97.9 | 27.5 | 4.8 |
| 14 | 30.0 | N | 14:14 | 11.0 | 5.5 | 5.5 | 5.5 | 3.5 | 2.0 | 1.5 | 3.0 | 11.6 | 15.8 | 73.5 | 23.5 | 5.9 |
| 15 | 44.2 | NE | 12:04 | 8.0 | 7.0 | 7.0 | 6.0 | 4.0 | 2.5 | 1.5 | 3.0 | 3.9 | 15.8 | 24.6 | 7.8 | 5.6 |
| 16 | 25.3 | NNE | 13:36 | 6.5 | 5.0 | 5.0 | 5.5 | 4.0 | 2.5 | 2.0 | 3.0 | 14.9 | 15.9 | 93.8 | 26.5 | 5.7 |
| 17 | 34.2 | NE | 15:45 | 9.5 | 5.0 | 5.5 | 5.5 | 4.5 | 2.5 | 2.0 | 3.0 | 14.5 | 15.9 | 91.0 | 28.5 | 4.8 |
| 18 | 39.6 | E | 12:08 | 7.5 | 6.0 | 6.0 | 6.0 | 4.5 | 3.0 | 2.0 | 3.0 | 15.6 | 16.0 | 97.6 | 29.0 | 3.9 |
| 19 | 46.7 | ESE | 13:06 | 10.0 | 6.0 | 6.0 | 6.0 | 5.0 | 3.0 | 2.0 | 3.0 | 15.6 | 16.0 | 97.3 | 29.0 | 3.6 |
| 20 | 35.7 | SE | 15:47 | 14.0 | 6.5 | 6.5 | 6.5 | 5.0 | 3.0 | 2.0 | 3.0 | 15.3 | 16.1 | 95.1 | 28.0 | 4.2 |
| 21 | 35.5 | SSE | 14:07 | 17.0 | 7.0 | 7.0 | 7.0 | 5.0 | 3.5 | 2.5 | 3.0 | 13.0 | 16.1 | 80.5 | 21.5 | 7.9 |
| 22 | 34.5 | NNE | 11:12 | 18.0 | 7.5 | 7.0 | 7.0 | 5.5 | 3.5 | 2.5 | 3.0 | 11.9 | 16.2 | 73.5 | 23.9 | 7.2 |
| 23 | 34.4 | S | 14:08 | 18.0 | 8.0 | 8.0 | 7.5 | 5.5 | 3.5 | 2.5 | 3.0 | 7.4 | 16.2 | 45.6 | 16.7 | 11.0 |
| 24 | 41.1 | ENE | 21:25 | 17.5 | 8.0 | 8.0 | 8.0 | 6.0 | 4.0 | 2.5 | 3.0 | 5.6 | 16.3 | 34.4 | 15.4 | 8.8 |
| 25 | 29.4 | NE | 11:24 | 7.0 | 9.0 | 9.0 | 8.0 | 6.0 | 4.0 | 2.5 | 3.0 | 6.2 | 16.3 | 38.0 | 14.2 | 7.4 |
| 26 | 25.8 | SSW | 8:27 | 10.0 | 8.5 | 8.0 | 8.0 | 6.5 | 4.0 | 3.0 | 2.5 | 11.1 | 16.4 | 67.8 | 22.6 | 8.6 |
| 27 | 36.2 | NW | 14:27 | 15.0 | 8.0 | 8.5 | 8.5 | 6.5 | 4.5 | 3.0 | 3.0 | 14.0 | 16.4 | 85.4 | 26.8 | 6.3 |
| 28 | 39.1 | WNW | 17:04 | 18.5 | 9.5 | 9.5 | 9.0 | 7.0 | 4.5 | 3.0 | 3.0 | 10.9 | 16.4 | 66.3 | 19.1 | 11.7 |
| 29 | 44.7 | WNW | 14:01 | 23.0 | 10.5 | 10.5 | 9.5 | 7.0 | 4.5 | 3.0 | 3.0 | 15.0 | 16.5 | 91.0 | 25.9 | 7.8 |
| 30 | 42.6 | N | 13:51 | 21.5 | 10.5 | 10.5 | 10.0 | 7.5 | 5.0 | 3.5 | 3.0 | 11.9 | 16.5 | 72.0 | 20.1 | 7.5 |
| 31 | 25.4 | WNW | 18:25 | 10.0 | 10.5 | 10.5 | 10.0 | 8.0 | 5.0 | 3.5 | 3.0 | 9.6 | 16.6 | 58.0 | 22.0 | 9.2 |
| Total | | | | | | | | | | | | 314.4 | 491.4 | 64.0 | 640.7 | 222.5 |
| Mean | | | | 10.1 | 5.5 | 5.5 | 5.4 | 3.9 | 2.5 | 2.0 | 3.0 | | | | | |
| Extreme | 58.1 | E | 12:13 | | | | | | | | | | | | | |
| Date | 13 | | | | | | | | | | | | | | | |

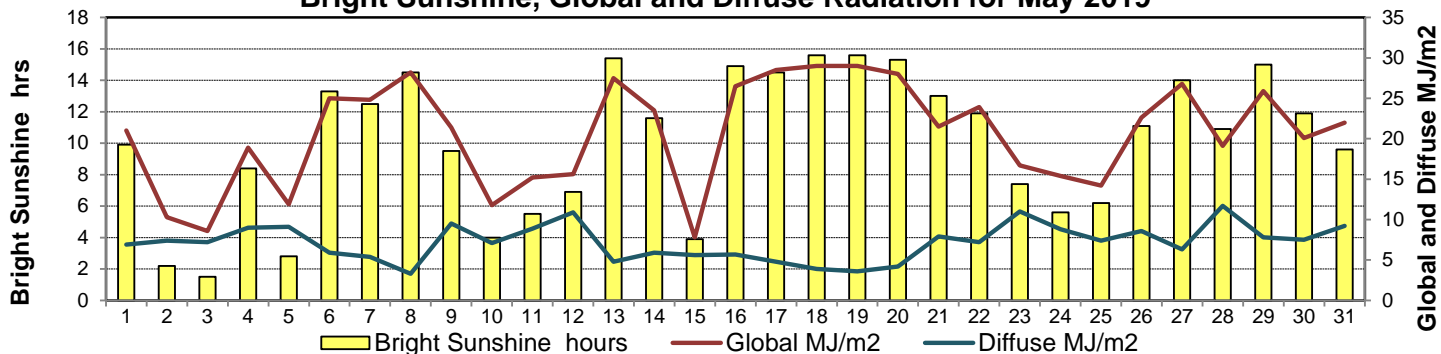
GLOSSARY OF TERMS

| | |
|--|--|
| Degree-days | Radiation |
| Tm Mean Temperature | Bright Sunshine is the unobstructed direct radiation from the sun, as opposed to the shading of a location by clouds or by other atmospheric obstructions. |
| Growing (Tm-5°C); if Tm ≤ 5°C then GDD = 0 | Diffuse is radiation reaching the earth's surface after having been scattered from the direct solar beam |
| Heating (18°C-Tm); if Tm ≥ 18°C then HDD = 0 | Global is the sum of the direct solar and diffuse radiation |
| Cooling (Tm-18°C); if Tm ≤ 18°C then CDD = 0 | Relative Humidity The ratio of the air's water vapour content to its water vapour capacity which changes with temperature. |
| T Trace of Precipitation | Air Pressure The force exerted by the weight of a column of air above a given point |
| SOG Depth of snow-on-the-ground | Wind Gust The daily highest instantaneous value recorded irrespective of direction and/or duration |
| Red Cell no data available | |
| Red Number manual calculation | |

Wind Speed for May 2019

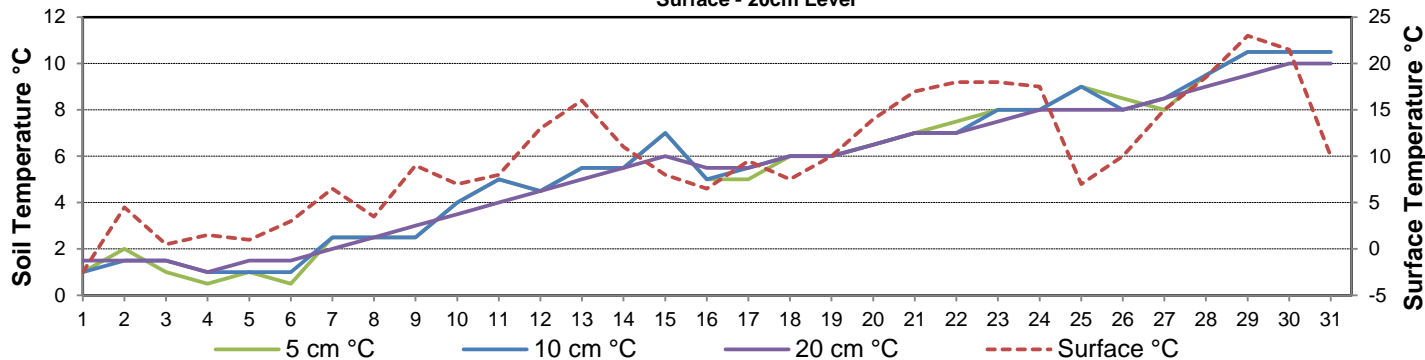


Bright Sunshine, Global and Diffuse Radiation for May 2019



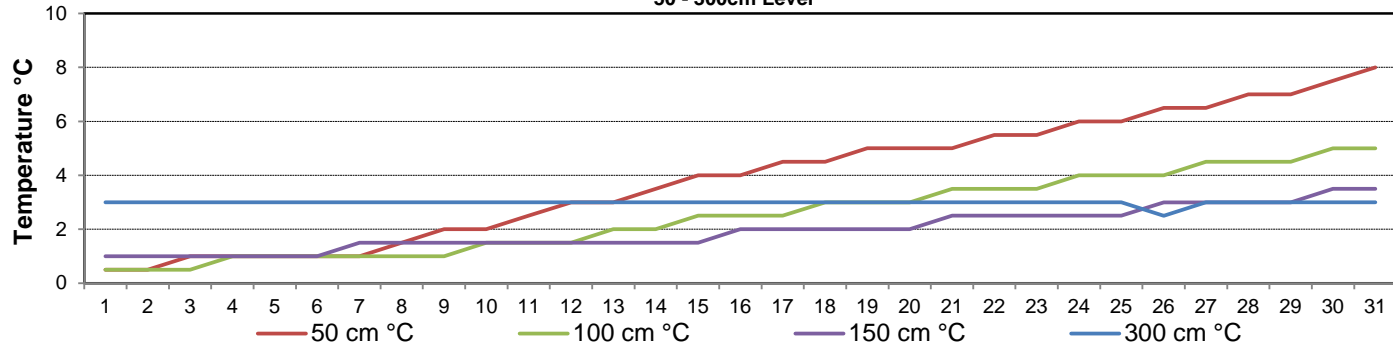
9 am Soil Temperatures for May 2019

Surface - 20cm Level

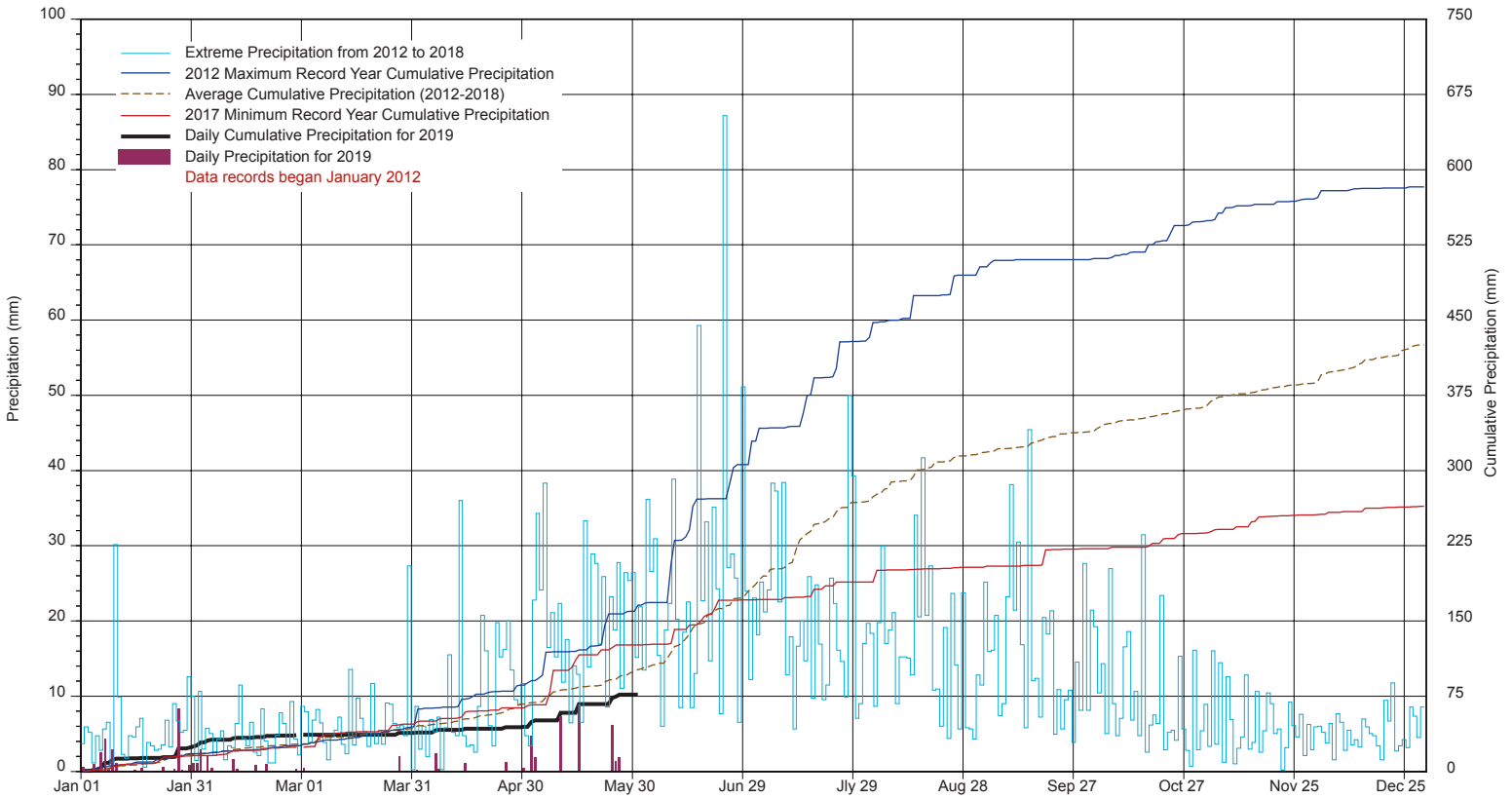


9 am Soil Temperatures for May 2019

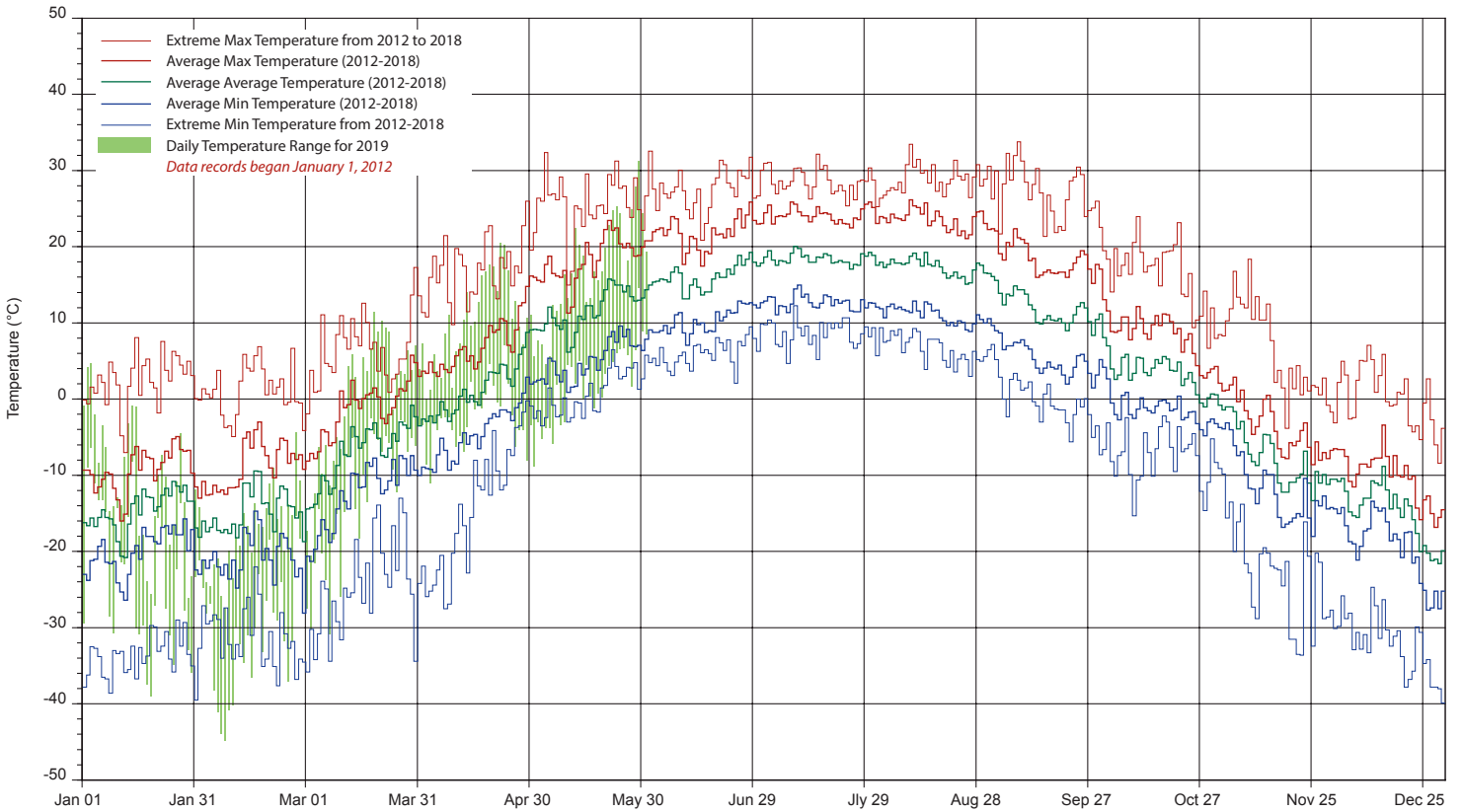
50 - 300cm Level



SRC's CLIMATE REFERENCE STATION at the Conservation Learning Centre 2019 PRECIPITATION AND AVERAGE



2019 TEMPERATURES AND AVERAGES



SRC proudly recongnizes the following CRS supporters:

