



# SRC CLIMATE REFERENCE STATION DAILY DATA REPORT

## CONSERVATION LEARNING CENTRE

Saskatchewan 53.03°N 105.77°W Estab. 2011

Preliminary

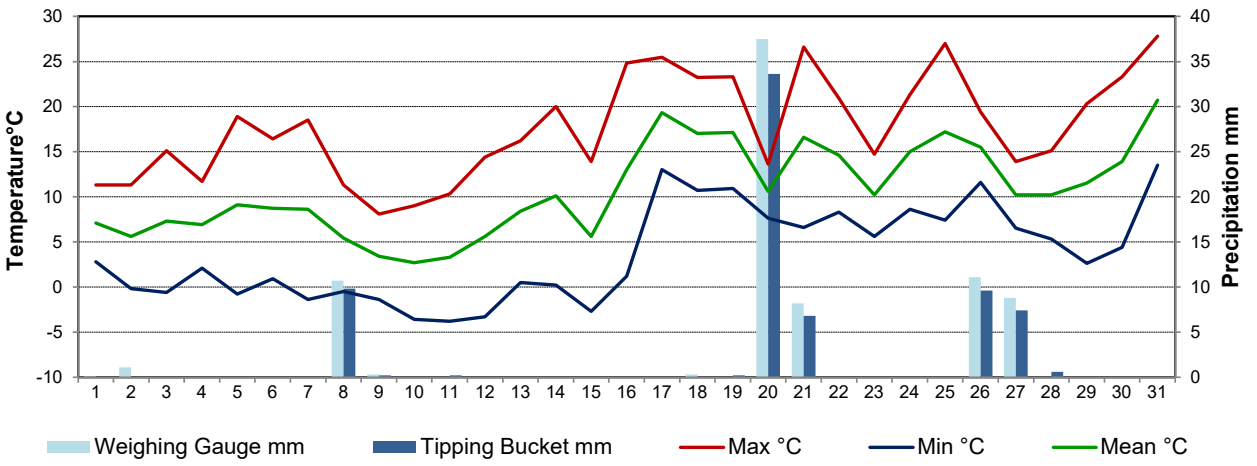
**May 2020**

Day	Temperature			Degree-days			Precipitation			Relative Humidity		Station Pressure <i>corrected to sea level</i>	
	Max	Min	Mean	Growing	Heating	Cooling	Weighing Gauge	Tipping Bucket	Notes	Max ½ hr Avg	Min ½ hr Avg	Max ½ hr Avg	Min ½ hr Avg
	°C	°C	°C	5°C base	18°C base	18°C base	mm	mm		%	%	mbar	mbar
1	11.3	2.8	7.1	2.1	10.9	0.0	0.1			95	63	1012	998
2	11.3	-0.2	5.6	0.6	12.4	0.0	1.1			93	64	1019	1012
3	15.1	-0.6	7.3	2.3	10.7	0.0	0.0			92	35	1019	1014
4	11.7	2.1	6.9	1.9	11.1	0.0	0.0			100	64	1017	1014
5	18.9	-0.8	9.1	4.1	8.9	0.0	0.0	0.0	Tipping bucket activated May 5	100	35	1023	1018
6	16.4	0.9	8.7	3.7	9.3	0.0	0.0	0.0		80	24	1023	1021
7	18.5	-1.4	8.6	3.6	9.4	0.0	0.0	0.0		82	20	1026	1022
8	11.3	-0.5	5.4	0.4	12.6	0.0	10.7	9.8		100	47	1025	1018
9	8.1	-1.4	3.4	0.0	14.6	0.0	0.3	0.2		99	56	1033	1025
10	9.0	-3.6	2.7	0.0	15.3	0.0	0.0	0.0		86	27	1035	1030
11	10.3	-3.8	3.3	0.0	14.7	0.0	0.0	0.2		91	28	1031	1022
12	14.4	-3.3	5.6	0.6	12.4	0.0	0.0	0.0		90	24	1022	1009
13	16.2	0.5	8.4	3.4	9.6	0.0	0.0	0.0		84	30	1009	1004
14	20.0	0.2	10.1	5.1	7.9	0.0	0.0	0.0		96	24	1016	1005
15	13.9	-2.7	5.6	0.6	12.4	0.0	0.0	0.0		80	24	1019	1015
16	24.8	1.2	13.0	8.0	5.0	0.0	0.0	0.0		69	22	1017	1008
17	25.5	13.0	19.3	14.3	0.0	1.3	0.0	0.0		57	21	1008	1005
18	23.2	10.7	17.0	12.0	1.0	0.0	0.3	0.0		83	39	1007	1004
19	23.3	10.9	17.1	12.1	0.9	0.0	0.0	0.2		99	39	1014	1003
20	13.6	7.6	10.6	5.6	7.4	0.0	37.5	33.6		98	60	1015	1007
21	26.6	6.6	16.6	11.6	1.4	0.0	8.2	6.8		98	26	1006	997
22	20.9	8.3	14.6	9.6	3.4	0.0	0.0	0.0		89	29	1005	1001
23	14.7	5.6	10.2	5.2	7.8	0.0	0.0	0.0		91	55	1013	1005
24	21.3	8.6	15.0	10.0	3.0	0.0	0.0	0.0		75	27	1015	1012
25	27.0	7.4	17.2	12.2	0.8	0.0	0.0	0.0		84	19	1012	1007
26	19.4	11.6	15.5	10.5	2.5	0.0	11.1	9.6		98	41	1006	1002
27	13.9	6.5	10.2	5.2	7.8	0.0	8.8	7.4		96	59	1016	1004
28	15.1	5.3	10.2	5.2	7.8	0.0	0.0	0.6		96	46	1023	1016
29	20.3	2.6	11.5	6.5	6.5	0.0	0.0	0.0		100	32	1025	1022
30	23.3	4.4	13.9	8.9	4.1	0.0	0.0	0.0		95	24	1024	1015
31	27.8	13.5	20.7	15.7	0.0	2.7	0.0	0.0		54	35	1015	996
Total				181.0	231.6	4.0	78.1	68.4					
Avg	17.6	3.6	10.7				137.3	Cumulative ppt					
Extreme	27.8	-3.8					37.5	33.6	0	100	19	1035	996
Date	31	11					20	20		4	25	10	31

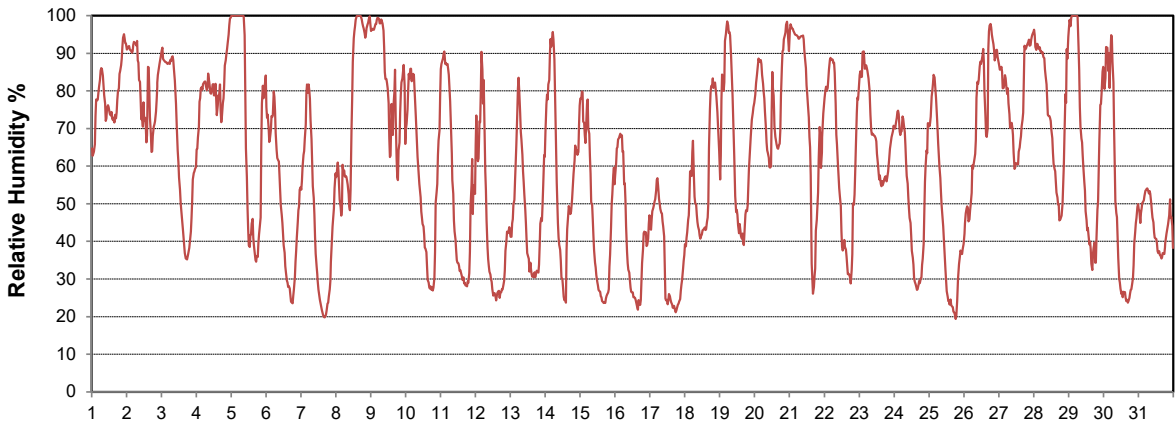
**SRC proudly recognizes the following CRS supporters:**



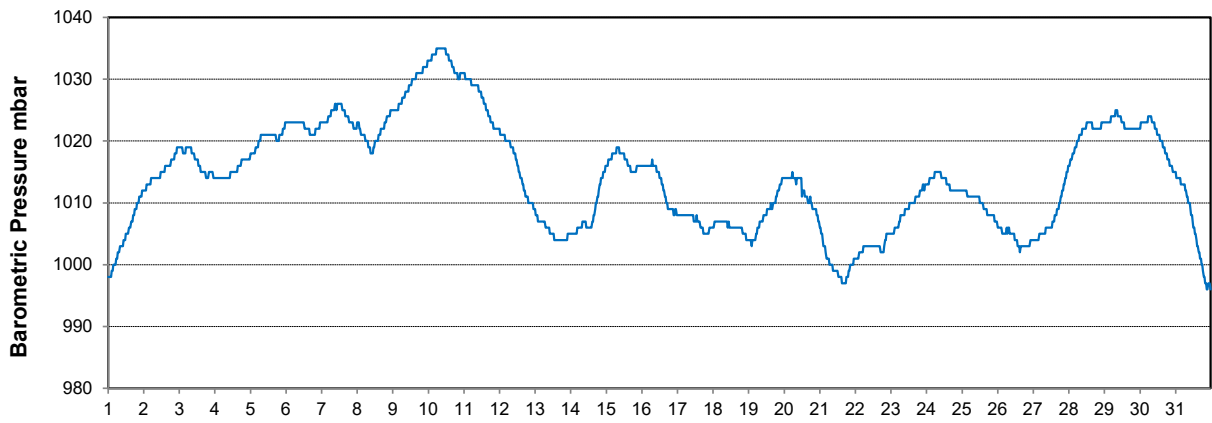
### Temperature and Precipitation for May 2020



### Relative Humidity for May 2020



### Barometric Pressure Corrected to Sea Level for May 2020





# SRC CLIMATE REFERENCE STATION DAILY DATA REPORT

## CONSERVATION LEARNING CENTRE

Saskatchewan 53.03°N 105.77°W Estab. 2011

Preliminary

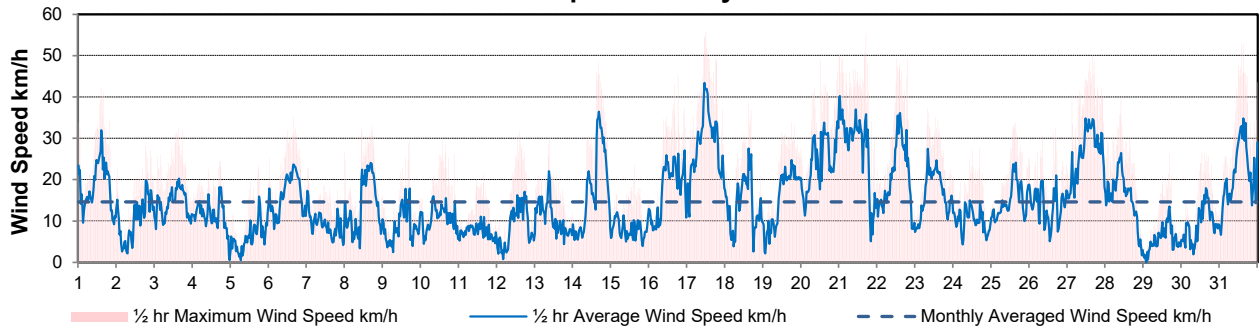
May 2020

Day	Wind Gust			Soil Temperatures at 0900hrs								Radiation				
	Max	Direction	Time	Surface	5 cm	10 cm	20 cm	50 cm	100 cm	150 cm	300 cm	Bright Sunshine	Possible	% Possible	Global	Diffuse
	km/h			°C	°C	°C	°C	°C	°C	°C	°C	hours	hours		MJ/m <sup>2</sup>	MJ/m <sup>2</sup>
1	42.3	NW	14:24	9.5	3.0	2.5	1.0	0.0	0.0	1.0	3.0	2.4	15.1	15.9	8.2	6.7
2	28.2	ENE	18:21	7.0	2.0	1.5	1.0	0.0	0.0	0.5	2.5	3.6	15.1	23.8	12.0	8.2
3	32.4	ESE	15:14	2.5	1.5	1.5	1.0	0.0	0.0	0.5	2.5	11.8	15.2	77.7	24.4	5.0
4	24.5	ESE	16:52	5.5	2.5	2.5	1.5	0.0	0.0	0.5	2.5	0.6	15.3	3.9	8.3	7.2
5	23.2	WNW	17:46	6.5	2.0	1.5	1.5	0.0	0.0	0.5	2.5	7.3	15.3	47.7	18.9	7.8
6	35.1	ESE	15:33	7.5	3.0	3.0	2.5	0.0	0.0	1.0	2.5	14.9	15.4	96.9	27.1	4.1
7	26.7	NNE	23:46	6.5	3.0	3.0	2.5	0.0	0.0	1.0	2.5	12.7	15.4	82.3	25.5	5.1
8	32.9	NNE	16:38	9.5	4.5	4.0	3.0	0.0	0.0	1.0	2.5	0.4	15.5	2.6	4.9	4.3
9	29.6	NNE	16:31	1.0	2.0	2.0	2.0	0.0	0.0	1.0	2.5	3.8	15.6	24.4	13.2	10.4
10	29.5	NE	13:39	2.0	1.0	1.5	1.5	0.0	0.0	1.0	2.5	14.8	15.6	94.9	28.1	3.7
11	21.5	NNE	15:27	3.5	1.5	1.5	2.0	0.0	0.0	1.0	2.5	15.2	15.7	97.1	28.4	3.8
12	31.6	SW	14:23	8.0	1.5	2.0	2.0	0.5	0.0	1.0	2.5	11.8	15.7	75.1	24.8	5.5
13	30.1	SSW	9:13	11.0	3.5	3.0	2.5	0.5	0.0	1.0	2.5	10.9	15.8	69.1	20.9	9.9
14	48.6	NNE	16:01	13.0	3.5	3.0	3.0	0.5	0.0	1.0	2.5	12.4	15.8	78.4	25.6	6.2
15	23.6	NW	14:32	5.0	3.0	3.0	3.0	1.0	0.0	1.0	2.5	15.3	15.9	96.3	28.1	4.3
16	45.1	SSW	18:09	13.0	3.5	3.5	3.5	1.0	0.0	1.0	2.5	9.4	15.9	59.0	22.9	6.9
17	55.7	SSW	11:45	19.0	6.5	5.5	4.5	1.0	0.0	0.5	2.5	6.2	16.0	38.8	14.7	10.9
18	38.4	S	14:52	20.0	7.0	6.0	5.0	1.5	0.0	0.5	2.5	6.3	16.0	39.3	13.8	8.6
19	33.9	N	17:53	15.5	7.0	6.5	5.5	2.0	0.0	0.5	2.5	11.3	16.1	70.3	23.5	8.2
20	50.3	NE	23:46	9.5	7.5	7.0	6.0	2.5	0.0	1.0	2.5	2.3	16.1	14.3	9.4	7.2
21	55.0	S	16:33	7.0	6.5	6.5	5.5	2.5	0.0	0.5	2.5	7.1	16.2	43.9	18.9	7.0
22	49.2	SW	19:21	14.5	7.5	7.0	6.5	3.0	0.0	0.5	2.5	12.1	16.2	74.6	23.6	6.5
23	37.2	WSW	7:39	9.0	7.0	7.0	6.5	3.5	0.5	1.0	2.5	8.4	16.3	51.6	19.7	11.2
24	27.6	NW	16:40	13.0	7.5	7.0	6.5	3.5	1.0	1.0	2.5	14.0	16.3	85.8	29.2	3.6
25	33.8	SW	15:04	18.0	8.0	8.0	7.0	4.0	1.5	1.0	2.5	12.6	16.4	77.1	27.7	6.4
26	32.3	NW	16:26	14.5	10.0	9.5	8.0	4.5	2.0	1.0	2.5	0.9	16.4	5.5	8.1	6.0
27	50.0	NW	15:50	10.5	9.0	9.0	8.0	5.0	2.5	1.0	2.5	2.1	16.4	12.8	11.0	8.5
28	39.5	N	9:59	8.0	8.0	8.0	7.5	5.5	2.5	1.5	2.5	7.8	16.5	47.4	20.5	10.7
29	26.2	W	16:20	11.5	7.5	7.5	7.5	5.5	3.0	1.5	2.5	11.7	16.5	70.9	24.1	6.7
30	26.6	WSW	12:35	15.0	8.5	8.5	8.0	6.0	3.5	2.0	2.5	13.1	16.6	79.2	24.7	8.8
31	53.0	SE	13:33	19.0	10.0	9.5	9.0	6.5	3.5	2.0	2.5	6.7	16.6	40.4	18.8	11.5
Total												269.9	492.6	54.8	609.0	220.9
Mean				10.2	5.1	4.9	4.3	1.9	0.6	1.0	2.5					
Extreme	55.7	SSW	11:45													
Date	17															

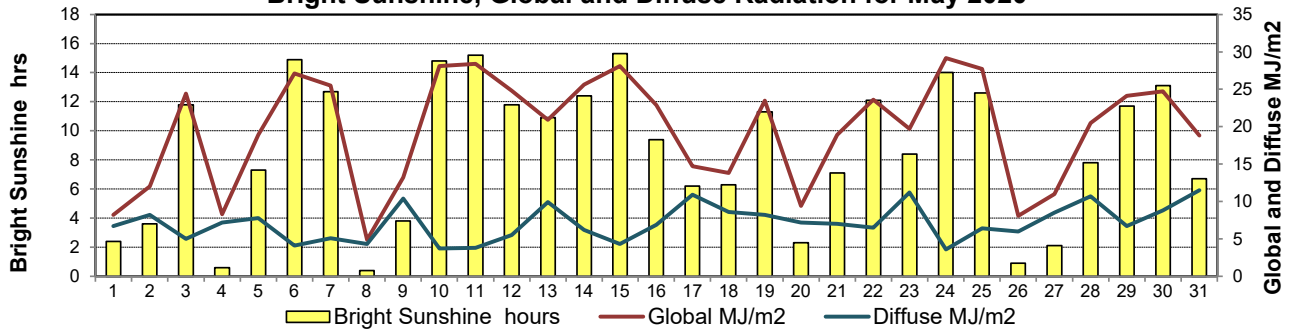
### GLOSSARY OF TERMS

Degree-days	Radiation
<b>Tm</b> Mean Temperature	<b>Bright Sunshine</b> is the unobstructed direct radiation from the sun, as opposed to the shading of a location by clouds or by other atmospheric obstructions.
Growing (Tm-5°C); if Tm ≤ 5°C then GDD = 0	
Heating (18°C-Tm); if Tm ≥ 18°C then HDD = 0	<b>Diffuse</b> is radiation reaching the earth's surface after having been scattered from the direct solar beam
Cooling (Tm-18°C); if Tm ≤ 18°C then CDD = 0	<b>Global</b> is the sum of the direct solar and diffuse radiation
<b>T</b> Trace of Precipitation	<b>Relative Humidity</b> The ratio of the air's water vapour content to its water vapour capacity which changes with temperature.
<b>SOG</b> Depth of snow-on-the-ground	
<b>Red Cell</b> no data available	<b>Air Pressure</b> The force exerted by the weight of a column of air above a given point
<b>Red Number</b> manual calculation	<b>Wind Gust</b> The daily highest instantaneous value recorded irrespective of direction and/or duration

**Wind Speed for May 2020**

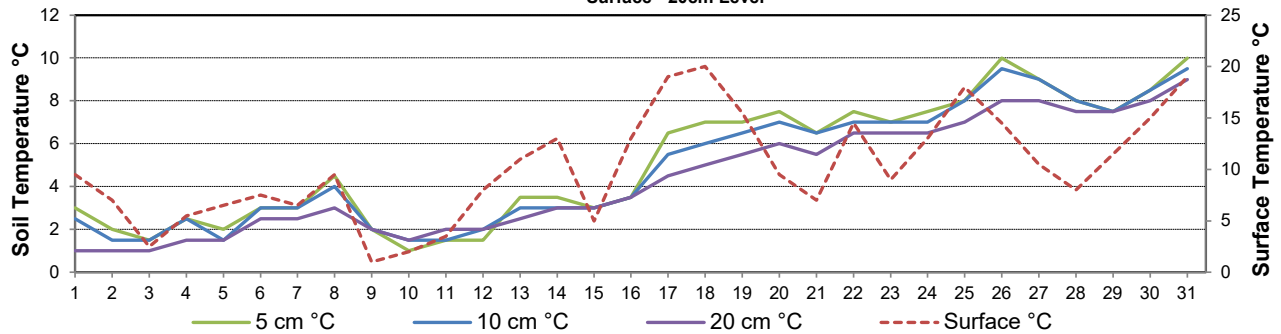


**Bright Sunshine, Global and Diffuse Radiation for May 2020**



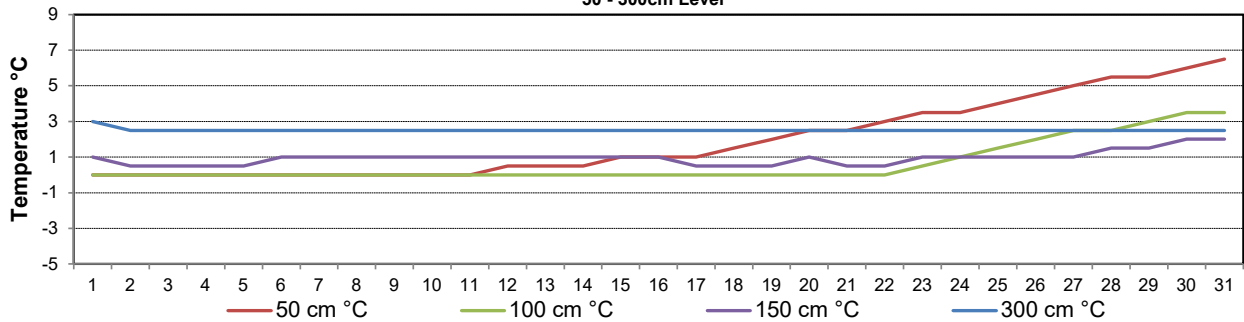
**9 am Soil Temperatures for May 2020**

Surface - 20cm Level



**9 am Soil Temperatures for May 2020**

50 - 300cm Level





# SRC CLIMATE REFERENCE STATION DAILY DATA REPORT

## CONSERVATION LEARNING CENTRE

Saskatchewan 53.03°N 105.77°W Estab. 2011

Preliminary

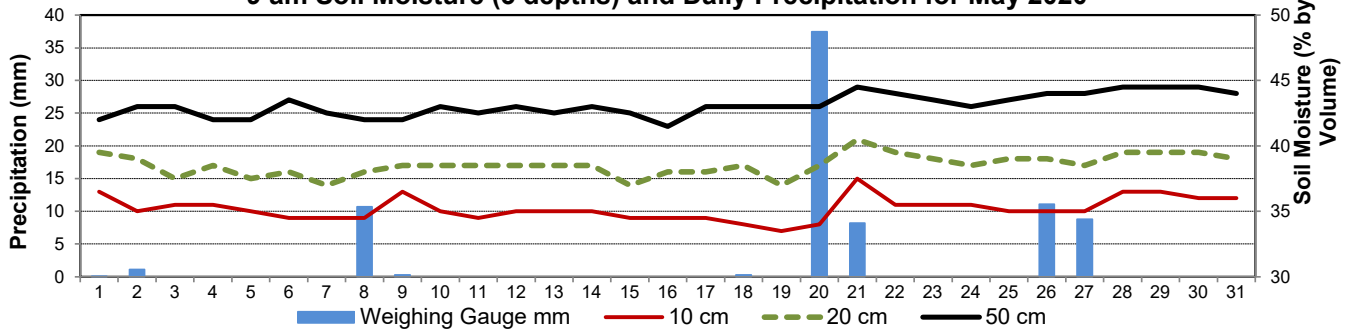
May 2020

Day	2 meter Wind Speed			Soil Moisture at 0900 hrs (rounded to the 0.5%)						<i>Spring Site maintenance May 5 2020 - items included uncapping tipping bucket, cleaned camera and solar panels, sealed conduit connected to soil moisture sensors, replaced fluid in Geonor, replaced desiccants, replaced bright sunshine recorder with recalibrated bright sunshine recorder</i>		
	Daily Average	Max ½ hr Avg	½ hr Extreme Max	10 cm	20 cm	50 cm						
	km/h	km/h	km/h	% by volume (soil type is Clay Loam)								
1	14.0	23.6	32.7	36.5	39.5	42.0						
2	9.0	16.1	22.2	35.0	39.0	43.0						
3	10.0	15.0	27.0	35.5	37.5	43.0						
4	9.0	14.8	19.3	35.5	38.5	42.0						
5	5.0	12.5	19.1	35.0	37.5	42.0						
6	13.0	19.0	31.0	34.5	38.0	43.5						
7	7.0	13.4	21.2	34.5	37.0	42.5						
8	10.0	17.9	25.2	34.5	38.0	42.0						
9	7.0	14.8	23.9	36.5	38.5	42.0						
10	8.0	13.6	23.3	35.0	38.5	43.0						
11	6.0	10.0	18.5	34.5	38.5	42.5						
12	7.0	14.4	26.4	35.0	38.5	43.0						
13	9.0	18.6	25.2	35.0	38.5	42.5						
14	13.0	26.0	36.0	35.0	38.5	43.0						
15	7.0	9.5	18.1	34.5	37.0	42.5						
16	14.0	21.4	35.8	34.5	38.0	41.5						
17	22.0	33.3	43.1	34.5	38.0	43.0						
18	10.0	20.9	30.0	34.0	38.5	43.0						
19	12.0	19.0	26.4	33.5	37.0	43.0						
20	18.0	29.7	39.6	34.0	38.5	43.0						
21	21.0	30.0	44.2	37.5	40.5	44.5						
22	16.0	28.3	40.6	35.5	39.5	44.0						
23	13.0	21.2	29.1	35.5	39.0	43.5						
24	9.0	12.7	20.4	35.5	38.5	43.0						
25	12.0	20.3	28.3	35.0	39.0	43.5						
26	11.0	16.7	26.6	35.0	39.0	44.0						
27	20.0	27.0	39.1	35.0	38.5	44.0						
28	12.0	20.6	29.5	36.5	39.5	44.5						
29	4.0	11.5	22.0	36.5	39.5	44.5						
30	8.0	15.2	23.1	36.0	39.5	44.5						
31	14.0	9.0	41.0	36.0	39.0	44.0						
Total												
Mean				35	39	43.1						
Extreme	22.0	33.3	44.2	37.5	40.5	44.5						
Date	0	0	0	0	0	0						

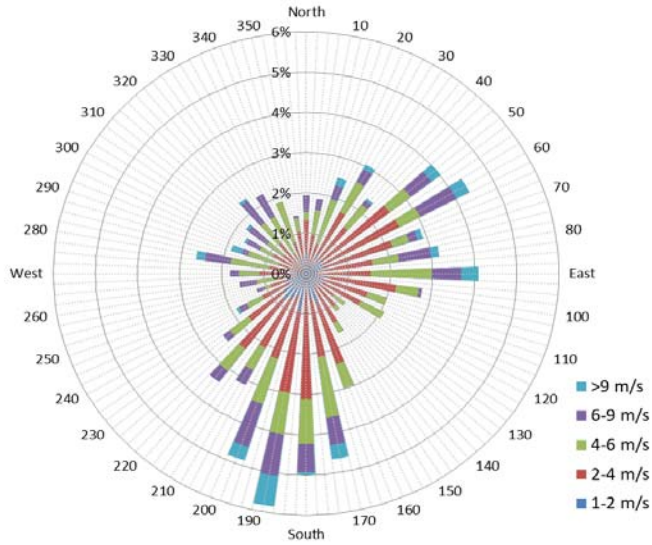
**SRC proudly recognizes the following CRS supporters:**



**9 am Soil Moisture (3 depths) and Daily Precipitation for May 2020**



**10 minute Average Wind Speed and Direction CLC May 2020**



**1/2 hr Maximum Wind Speed and Direction CLC May 2020**

