



SRC CLIMATE REFERENCE STATION DAILY DATA REPORT

CONSERVATION LEARNING CENTRE

Saskatchewan 53.03°N 105.77°W 451m asl Estab. 2011

Preliminary **November 2024**

Day	Temperature (HMP155A)						Degree-days			Precipitation			Relative Humidity (HMP115A)		Station Pressure <i>corrected to sea level</i>	
	Max	Avg Max	Min	Avg Min	Mean	Avg Mean	Growing	Heating	Cooling	Geonor all-season ppt Gauge	Notes	Snow-on-Ground 0900h	Max ½ hr Avg	Min ½ hr Avg	Max ½ hr Avg	Min ½ hr Avg
	°C	2012-2021	°C	2012-2021	°C	2012-2021	5°C base	18°C base	18°C base	mm		cm	%	%	mbar	mbar
1	7.9	3.0	-11.9	-4.9	-2.0	-1.0	0.0	20.0	0.0	0.0		0	94	48	1013	1011
2	0.9	3.0	-10.8	-4.5	-5.0	-0.7	0.0	23.0	0.0	0.0		0	97	80	1013	1005
3	5.3	3.0	-8.1	-4.6	-1.4	-0.8	0.0	19.4	0.0	0.0		0	96	68	1009	1003
4	6.5	3.0	-10.1	-5.5	-1.8	-1.3	0.0	19.8	0.0	0.0		0	95	46	1009	999
5	0.3	2.4	-8.2	-6.9	-4.0	-2.2	0.0	22.0	0.0	0.0		0	91	68	1018	999
6	2.8	-0.2	-7.8	-8.0	-2.5	-4.1	0.0	20.5	0.0	0.0		0	90	49	1018	1007
7	11.0	0.4	-5.1	-8.2	3.0	-3.9	0.0	15.0	0.0	0.0		0	86	42	1018	1004
8	13.2	-1.3	-4.9	-9.8	4.2	-5.6	0.0	13.8	0.0	0.0		0	88	43	1017	1004
9	8.7	-3.0	-4.6	-12.8	2.1	-7.9	0.0	15.9	0.0	0.2		0	96	58	1011	1003
10	2.1	-5.3	-4.7	-13.1	-1.3	-9.2	0.0	19.3	0.0	11.4		1	98	86	1017	1010
11	2.2	-4.4	-4.2	-14.5	-1.0	-9.5	0.0	19.0	0.0	0.0		1	98	77	1017	997
12	6.9	-4.1	-4.3	-13.1	1.3	-8.6	0.0	16.7	0.0	0.0		0	90	56	1006	993
13	4.0	-1.3	-7.8	-11.7	-1.9	-6.5	0.0	19.9	0.0	0.0		0	94	62	1007	1005
14	-0.2	0.0	-5.0	-9.4	-2.6	-4.7	0.0	20.6	0.0	6.3		0	97	88	1006	1002
15	-1.9	-1.7	-7.8	-9.3	-4.9	-5.5	0.0	22.9	0.0	0.0		0	94	80	1012	1006
16	-2.8	-3.4	-6.6	-10.0	-4.7	-6.7	0.0	22.7	0.0	0.0		0	96	90	1012	1000
17	2.2	-4.8	-9.1	-12.8	-3.5	-8.9	0.0	21.5	0.0	0.0		0	96	73	999	990
18	-1.0	-5.4	-9.8	-13.5	-5.4	-9.5	0.0	23.4	0.0	0.4		1	94	83	1007	995
19	-6.1	-5.9	-11.0	-14.9	-8.6	-10.4	0.0	26.6	0.0	10.1		12	91	77	1013	1007
20	-8.3	-5.8	-14.5	-15.4	-11.4	-10.6	0.0	29.4	0.0	0.0		14	82	65	1022	1013
21	-9.6	-5.6	-13.8	-15.6	-11.7	-10.7	0.0	29.7	0.0	0.3		13	87	75	1023	1021
22	-9.1	-4.3	-19.5	-14.6	-14.3	-9.5	0.0	32.3	0.0	0.0		11	88	63	1022	1020
23	-10.2	-2.6	-14.8	-14.1	-12.5	-8.4	0.0	30.5	0.0	1.5		14	91	79	1022	1013
24	-12.2	-3.6	-19.5	-10.8	-15.9	-7.2	0.0	33.9	0.0	7.1		19	85	79	1021	1013
25	-15.8	-5.2	-30.8	-14.1	-23.3	-9.7	0.0	41.3	0.0	0.1		21	84	67	1024	1021
26	-24.4	-6.1	-33.4	-15.7	-28.9	-10.9	0.0	46.9	0.0	0.0		20	77	73	1022	1016
27	-12.6	-3.8	-32.2	-12.3	-22.4	-8.1	0.0	40.4	0.0	0.3		20	86	69	1019	1016
28	-14.7	-6.6	-31.0	-13.2	-22.9	-9.9	0.0	40.9	0.0	0.1		26	81	67	1026	1020
29	-21.5	-5.9	-36.0	-12.7	-28.8	-9.3	0.0	46.8	0.0	0.0		25	79	71	1027	1026
30	-21.5	-6.4	-39.0	-13.4	-30.3	-10.0	0.0	48.3	0.0	1.5		24	79	69	1026	1024
Total							0.0	802.4	0.0	39.3			Extreme / Date	Extreme / Date	Extreme / Date	Extreme / Date
Avg	-3.3	-2.7	-14.2	-11.3	-8.7	-7.1	Monthly 2012 - 2021 Average			24.7	2012-2021 Average					
Extreme Date	13.2	18.4	-39.0	-33.6			2.2	740.4	0	388.1	2024 Cumulative ppt		98	42	1027	990
Date	8	2016	30	2013						368.3	Cumulative Average		10	7	29	17

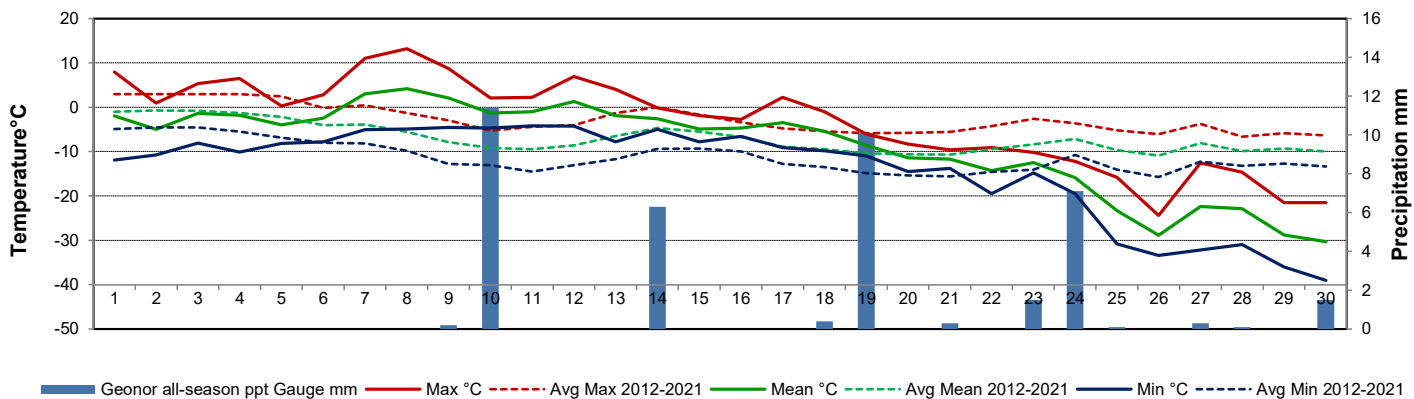
Note: Red numbers indicate manual calculation; Red cell indicate data not available

Precipitation is measured precipitation. It has not been corrected for wind speed.

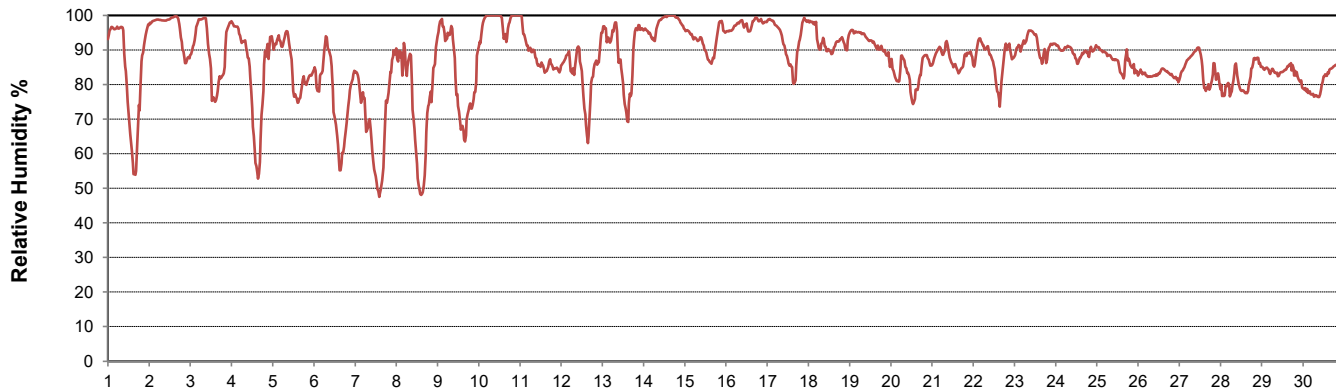
SRC proudly recognizes the following CRS supporters:



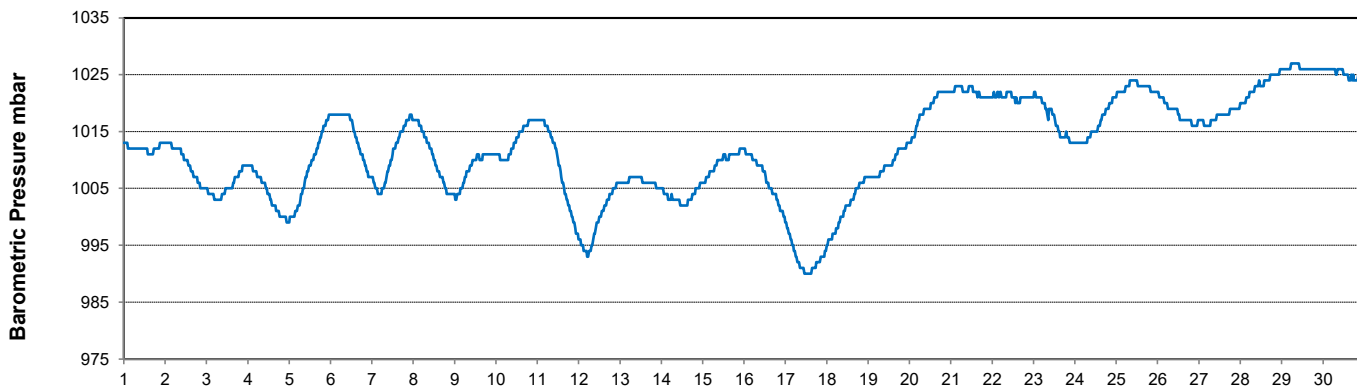
Temperature and Precipitation for November 2024



Relative Humidity for November 2024



Barometric Pressure Corrected to Sea Level for November 2024





SRC CLIMATE REFERENCE STATION DAILY DATA REPORT

CONSERVATION LEARNING CENTRE

Saskatchewan 53.03°N 105.77°W 451m asl Estab. 2011

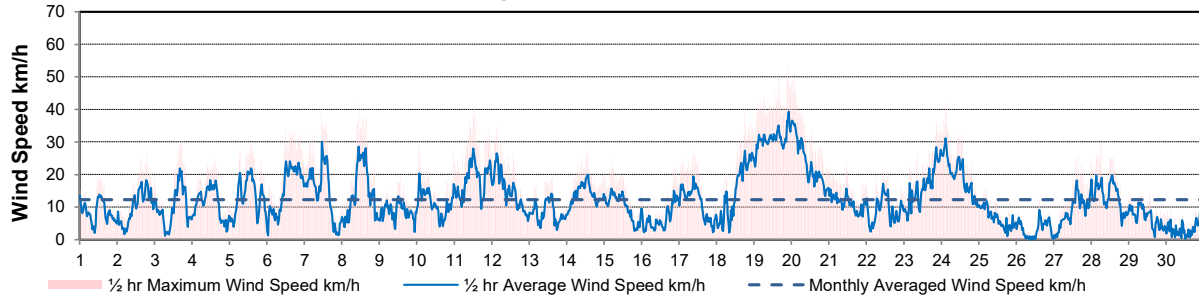
Preliminary **November 2024**

Day	Wind Gust (10 meter)			Wind Speed (10 meters)	Soil Temperatures at 0900hrs								Radiation				
	Max	Direction	Time	Daily Average	Surface	5 cm	10 cm	20 cm	50 cm	100 cm	150 cm	300 cm	Bright Sunshine	Possible	% Possible	Global	Diffuse
	km/h			km/h	°C	°C	°C	°C	°C	°C	°C	°C	hours	hours		MJ/m ²	MJ/m ²
1	19.4	SSW	11:58	8.5	-8.0	-0.5	0.5	2.0	5.0	7.0	8.0	8.0	8.1	9.5	85.5	7.3	1.5
2	26.5	ESE	19:29	10.1	-3.5	0.0	0.5	2.0	4.5	6.5	8.0	8.0	0.0	9.4	0.0	2.2	2.1
3	30.5	NW	17:19	9.9	-1.0	0.5	1.0	2.0	4.5	6.5	8.0	8.0	4.4	9.4	47.1	4.8	3.0
4	24.6	WSW	15:17	11.2	-5.5	0.0	0.5	2.5	4.5	6.5	8.0	8.0	8.7	9.3	93.6	7.8	1.3
5	29.6	N	14:00	13.1	-2.5	-0.5	0.0	2.0	4.0	6.0	7.5	8.0	4.8	9.2	52.0	4.6	3.5
6	33.6	SW	12:04	15.1	-2.5	0.0	0.5	1.5	4.0	6.0	7.5	8.0	4.7	9.2	51.3	5.0	3.0
7	41.5	NW	11:26	14.6	4.0	0.5	1.0	2.0	4.0	6.0	7.5	8.0	8.5	9.1	93.4	6.2	1.1
8	42.4	SSW	10:55	14.4	0.5	0.5	1.0	2.0	4.0	5.5	7.5	8.0	8.4	9.0	92.9	5.9	1.1
9	19.3	N	13:44	8.7	-2.0	0.5	1.0	2.5	4.0	5.5	7.0	8.0	1.0	9.0	11.1	3.0	2.8
10	29.2	ENE	1:29	11.2	0.0	2.0	2.5	3.0	4.0	5.5	7.0	8.0	2.7	8.9	30.2	3.6	2.4
11	40.8	S	13:02	18.2	0.0	1.5	1.5	2.5	4.0	5.5	7.0	7.5	1.2	8.9	13.5	3.1	2.7
12	34.9	S	3:19	14.7	4.0	1.5	1.5	2.5	4.0	5.5	7.0	7.5	5.3	8.8	60.2	4.5	1.8
13	19.1	SSW	14:30	8.3	-4.5	0.5	1.5	2.5	4.0	5.5	7.0	7.5	7.7	8.8	87.9	6.0	1.3
14	27.1	ENE	13:04	13.7	0.0	0.0	0.5	2.0	4.0	5.5	6.5	7.5	0.0	8.7	0.0	1.0	1.0
15	24.6	WNV	5:06	10.0	-2.0	0.5	0.5	1.5	3.5	5.0	6.5	7.5	0.4	8.7	4.6	2.6	2.5
16	22.2	S	21:37	6.5	-2.0	0.0	0.5	1.5	3.5	5.0	6.5	7.5	0.0	8.6	0.0	1.1	1.0
17	27.6	SSE	9:14	11.2	-1.0	0.0	0.0	1.0	3.5	5.0	6.5	7.0	1.5	8.5	17.6	2.7	2.4
18	39.1	N	18:28	14.9	-2.0	-0.5	0.0	1.0	3.5	5.0	6.5	7.5	0.3	8.5	3.5	2.3	2.1
19	52.9	N	21:25	30.9	-5.5	-1.0	-0.5	1.0	3.0	4.5	6.0	7.0	0.0	8.4	0.0	2.0	1.9
20	49.8	NNW	2:05	23.2	-11.0	-1.5	-1.0	1.0	3.0	4.5	6.0	7.5	4.9	8.4	58.4	4.3	2.1
21	24.0	NW	11:10	11.3	-10.0	-1.0	-0.5	0.5	3.0	4.5	6.0	7.5	0.0	8.3	0.0	2.6	2.6
22	21.8	WNW	10:43	9.0	-16.5	-2.0	-1.0	0.5	2.5	4.5	6.0	7.5	7.5	8.3	90.5	5.1	1.2
23	35.7	ENE	20:41	16.5	-10.0	-2.0	-1.5	0.5	2.5	4.5	6.0	7.5	0.0	8.3	0.0	2.1	2.0
24	41.8	NE	2:57	19.5	-12.5	-2.0	-1.0	0.5	2.5	4.5	6.0	7.5	0.0	8.2	0.0	2.9	2.8
25	16.0	NNW	5:08	6.4	-18.0	-2.0	-1.5	0.0	2.0	4.0	6.0	7.5	6.3	8.2	77.2	5.3	1.9
26	12.6	NE	14:48	3.2	-23.0	-3.0	-2.0	0.0	2.0	4.0	6.0	7.5	2.5	8.1	30.8	3.7	2.5
27	26.1	NW	15:35	8.6	-16.0	-3.0	-2.5	0.0	1.5	4.0	5.5	7.5	0.0	8.1	0.0	2.0	1.9
28	29.0	NW	6:32	13.4	-21.0	-2.5	-2.0	-0.5	1.5	4.0	5.5	7.0	7.3	8.0	90.9	4.4	1.1
29	14.3	WNW	8:16	6.8	-27.5	-3.5	-3.0	-0.5	1.5	4.0	5.5	7.0	6.8	8.0	85.1	5.2	1.2
30	14.1	ENE	23:34	3.8	-32.0	-4.5	-3.5	-1.0	1.0	3.5	5.5	7.0	4.5	8.0	56.5	4.3	1.9
Total													107.5	259.61	41.4	117.6	59.7
Mean				12.2	-7.7	-0.7	-0.2	1.3	3.3	5.1	6.7	7.6					
Extreme	52.9	N	21:25														
Date	19																

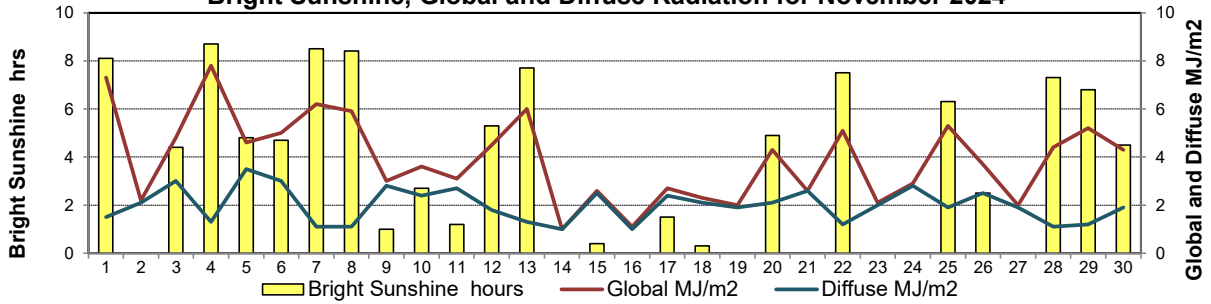
GLOSSARY OF TERMS

Degree-days	Radiation
T_m Mean Temperature	Bright Sunshine is the unobstructed direct radiation from the sun, as opposed to the shading of a location by clouds or by other atmospheric obstructions.
Growing (T _m -5°C); if T _m ≤ 5°C then GDD = 0	
Heating (18°C-T _m); if T _m ≥ 18°C then HDD = 0	
Cooling (T _m -18°C); if T _m ≤ 18°C then CDD = 0	Diffuse is radiation reaching the earth's surface after having been scattered from the direct solar beam
T Trace of Precipitation	Global is the sum of the direct solar and diffuse radiation
SOG Depth of snow-on-the-ground	Relative Humidity The ratio of the air's water vapour content to its water vapour capacity which changes with temperature.
Red Cell no data available	Air Pressure The force exerted by the weight of a column of air above a given point
Red Number manual calculation	Wind Gust The daily highest instantaneous value recorded irrespective of direction and/or duration

Wind Speed for November 2024

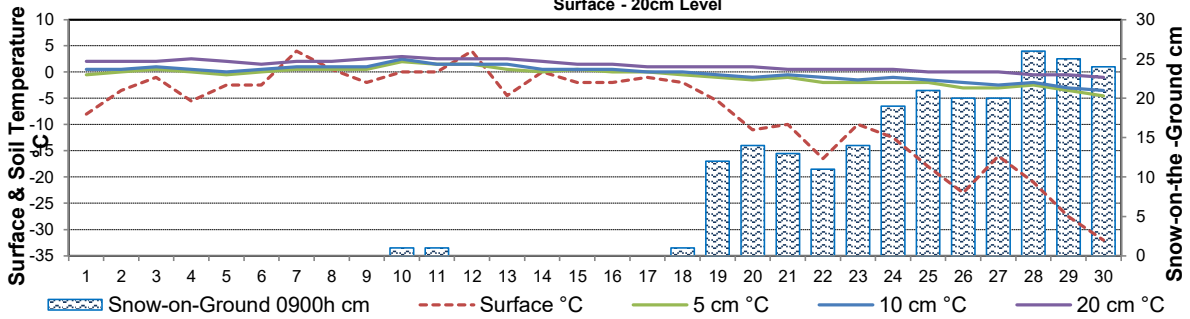


Bright Sunshine, Global and Diffuse Radiation for November 2024



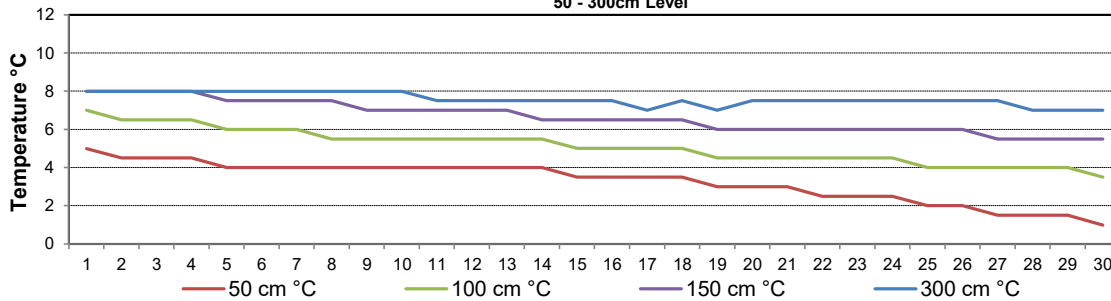
Soil Temperatures for November 2024

Surface - 20cm Level



Soil Temperatures for November 2024

50 - 300cm Level





SRC CLIMATE REFERENCE STATION DAILY DATA REPORT

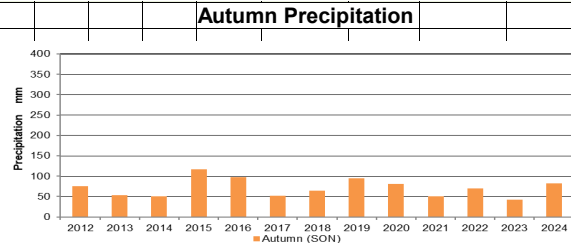
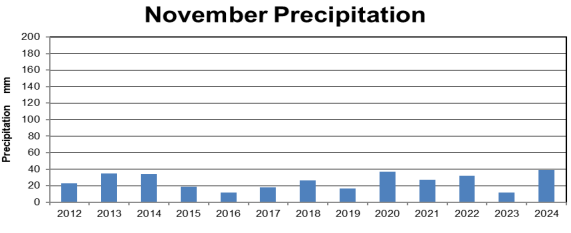
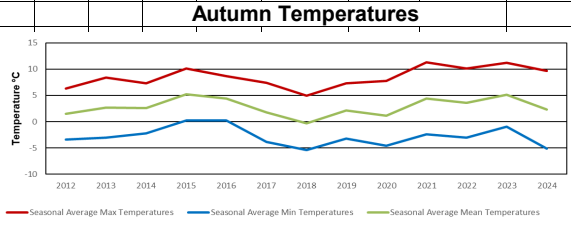
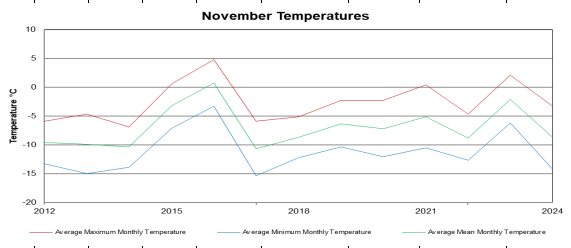
CONSERVATION LEARNING CENTRE

Saskatchewan 53.03°N 105.77°W 451m asl Estab. 2011

Preliminary **November 2024**

Day	2 meter Wind Speed			Soil Moisture at 0900 hrs (rounded to the 0.5%)		
	Daily Average	Max ½ hr Avg	½ hr Extreme Max	10 cm	20 cm	50 cm
	km/h	km/h	km/h	% by volume (soil type is Clay Loam)		
1	4.0	11.7	17.2		19.5	29.0
2	6.0	13.1	20.0		19.5	29.0
3	6.0	16.5	23.5		19.5	28.5
4	7.0	15.1	20.6		20.0	29.0
5	8.0	16.0	22.0		20.0	28.5
6	11.0	19.5	27.5		19.5	28.5
7	10.0	23.0	31.8		19.5	28.5
8	9.0	22.7	32.1		19.5	28.5
9	3.0	10.2	15.6		20.0	28.5
10	7.0	14.9	22.9		20.0	28.5
11	13.0	20.2	31.4		20.0	28.5
12	10.0	19.6	25.0		19.5	28.5
13	3.0	11.8	16.8		20.0	28.5
14	10.0	15.8	22.7		20.0	28.5
15	7.0	12.5	17.7		21.5	28.5
16	4.0	11.4	19.9		25.5	28.5
17	6.0	13.2	23.7		26.5	28.5
18	9.0	19.4	26.8		26.5	28.5
19	24.0	30.1	45.6		26.5	28.0
20	18.0	28.1	40.4		26.5	28.0
21	10.0	12.8	18.9		26.5	28.0
22	6.0	12.9	17.6		26.5	28.5
23	13.0	22.2	28.7		26.0	28.0
24	15.0	24.2	32.3		26.5	28.0
25	3.0	8.8	11.8		26.0	28.0
26	2.0	6.0	8.1		26.0	28.0
27	7.0	15.1	21.8		26.0	28.0
28	11.0	16.1	24.3		26.0	27.5
29	4.0	7.9	11.2		26.0	28.0
30	2.0	9.6	12.2		25.5	28.0
Total						
Mean				#DIV/0!	23	28.4
Extreme	24.0	30.1	45.6	0	26.5	29
Date	1	1	1	#N/A	1	2

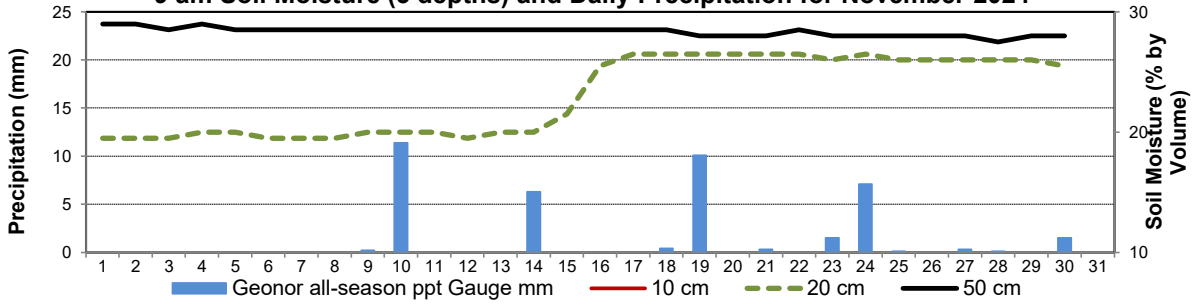
NOTE: New 10 cm soil moisture sensor installed Oct 31, 2024 so data should become valid by spring melt



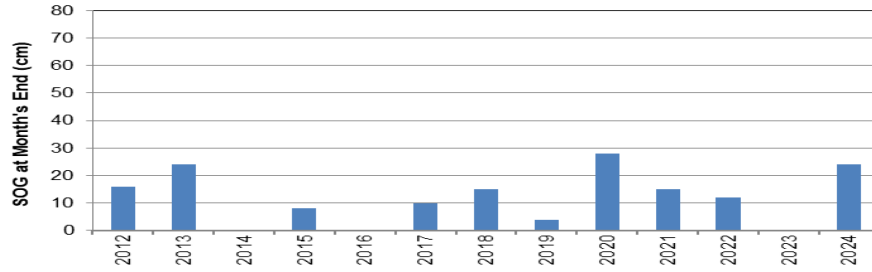
SRC proudly recognizes the following CRS supporters:



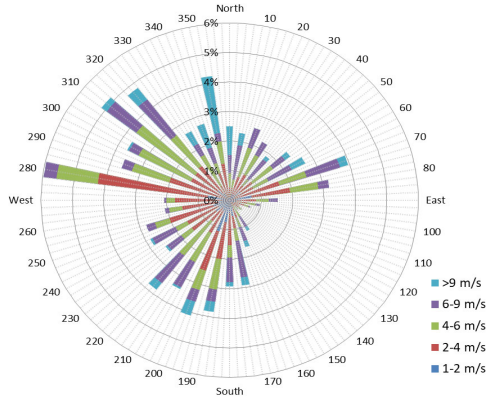
9 am Soil Moisture (3 depths) and Daily Precipitation for November 2024



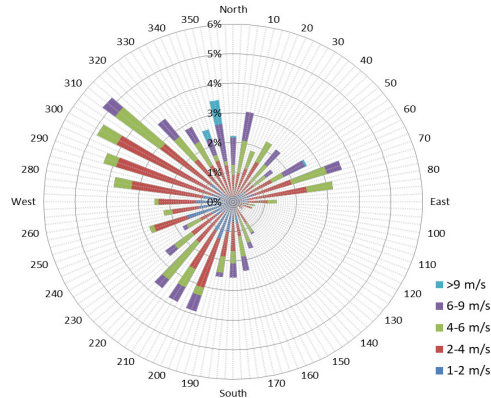
November Month-end snow depth



1/2 hr Maximum Wind Speed and Direction CLC Nov 2024

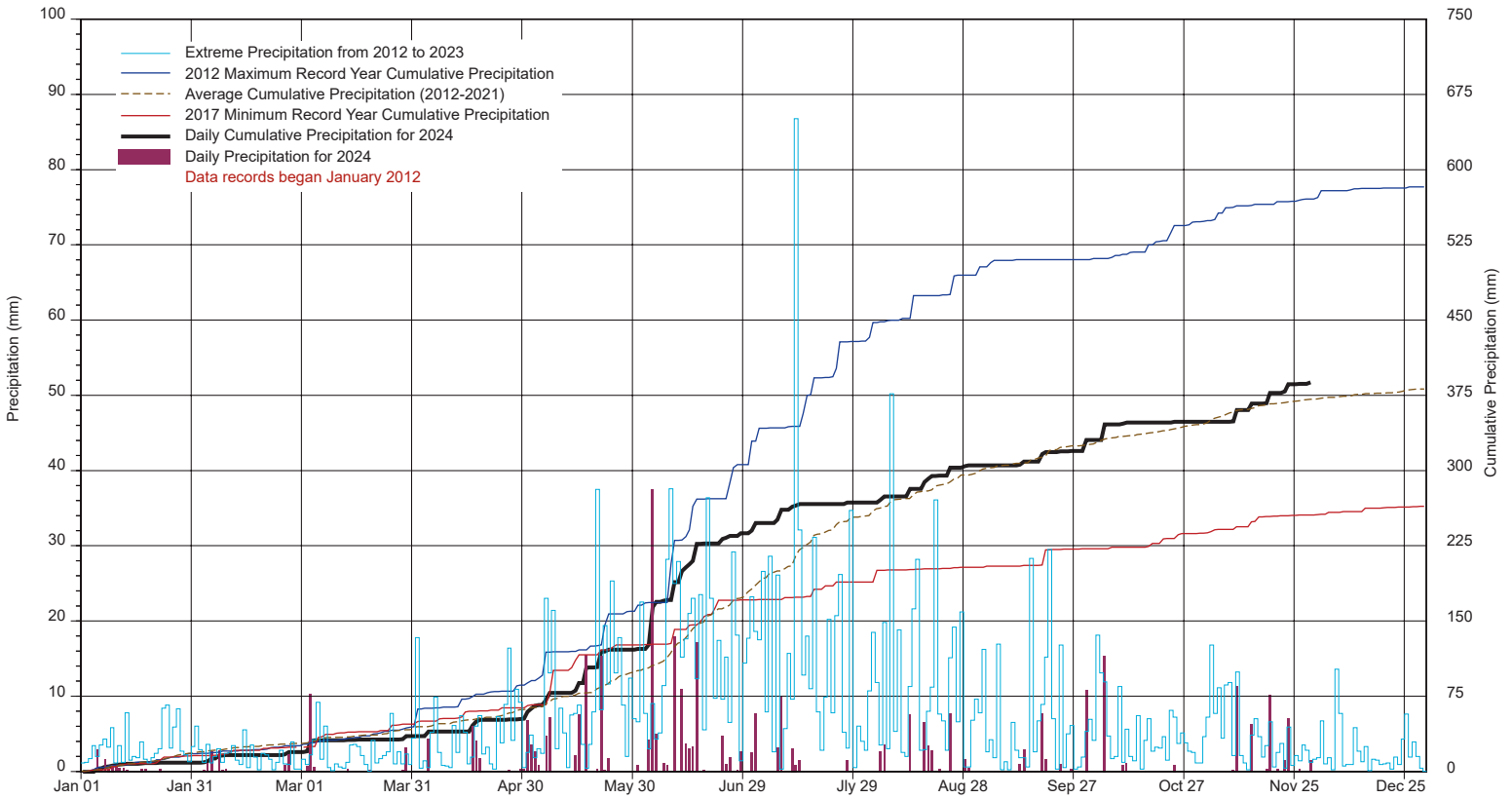


10 minute Average Wind Speed and Direction CLC Nov 2024

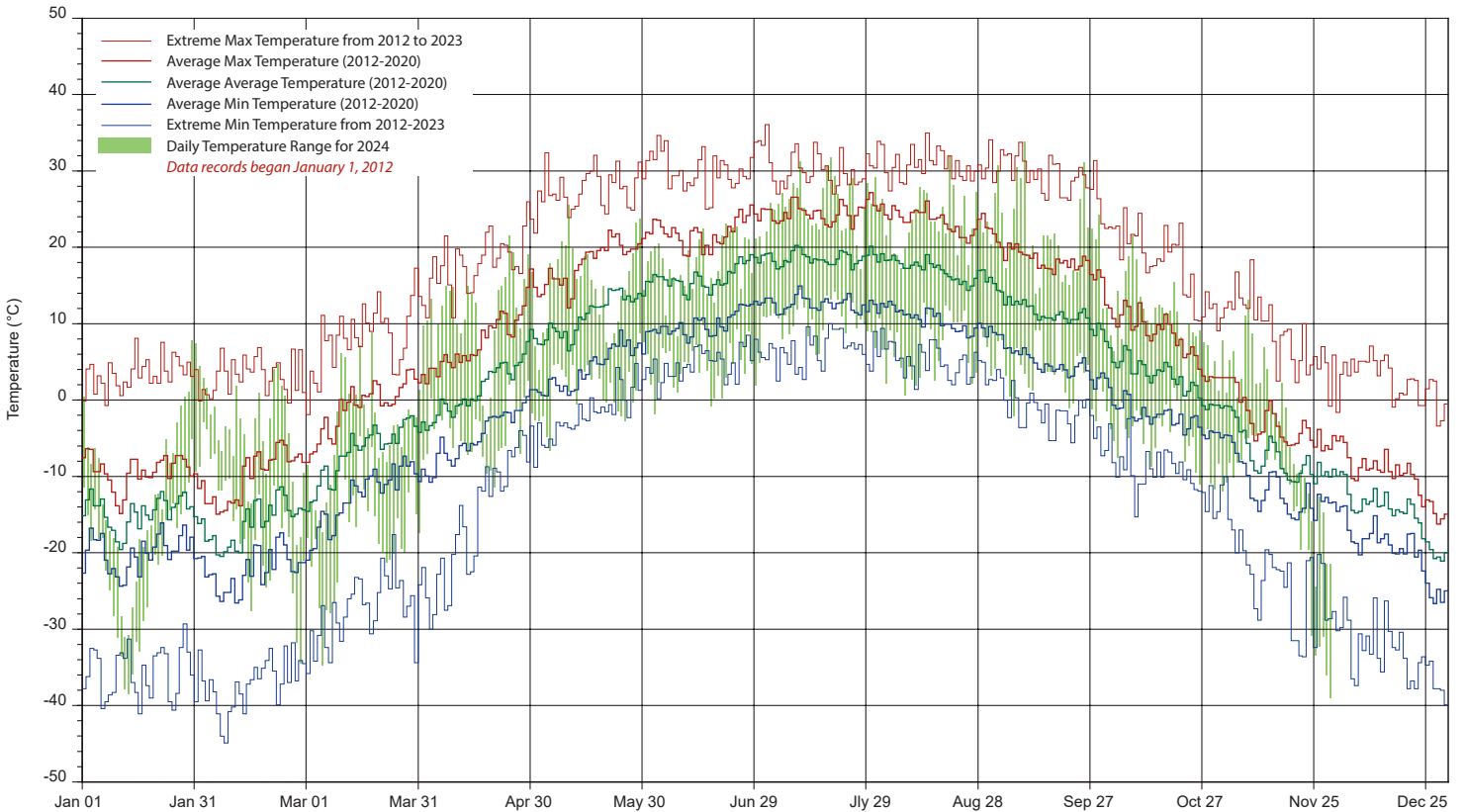


SRC's CLIMATE REFERENCE STATION at the Conservation Learning Centre

2024 PRECIPITATION AND AVERAGE



2024 TEMPERATURES AND AVERAGES



SRC proudly recognizes the following CRS supporters:

