



SRC CLIMATE REFERENCE STATION DAILY DATA REPORT

CONSERVATION LEARNING CENTRE

Saskatchewan 53.03°N 105.77°W Estab. 2011

Preliminary **October 2014**

Day	Temperature			Degree-days			Precipitation			Relative Humidity		Station Pressure <i>corrected to sea level</i>	
	Max	Min	Mean	Growing	Heating	Cooling	Weighing Gauge	Notes	Snow-on-Ground 0900h	Max ½ hr Avg	Min ½ hr Avg	Max ½ hr Avg	Min ½ hr Avg
	°C	°C	°C	5°C base	18°C base	18°C base	mm		cm	%	%	mbar	mbar
1	14.8	6.3	10.6	5.6	7.4	0.0	0.0		-	91	45	1004	999
2	8.4	0.6	4.5	0.0	13.5	0.0	0.3		-	87	54	1019	1004
3	3.6	-2.8	0.4	0.0	17.6	0.0	0.0		-	86	53	1021	1018
4	6.2	-2.4	1.9	0.0	16.1	0.0	0.2		-	93	68	1017	1007
5	10.2	0.9	5.6	0.6	12.4	0.0	0.0		-	93	58	1009	1003
6	11.0	2.2	6.6	1.6	11.4	0.0	0.0		-	92	57	1002	997
7	11.6	-1.2	5.2	0.2	12.8	0.0	0.0		-	91	29	1014	1002
8	6.9	-3.3	1.8	0.0	16.2	0.0	0.0		-	94	54	1021	1014
9	13.0	-0.4	6.3	1.3	11.7	0.0	0.0		-	92	38	1023	1020
10	18.7	0.6	9.7	4.7	8.3	0.0	0.0		-	93	33	1020	1006
11	18.4	6.3	12.4	7.4	5.6	0.0	0.0		-	73	38	1005	997
12	16.7	3.6	10.2	5.2	7.8	0.0	0.0		-	78	35	1008	999
13	17.5	1.1	9.3	4.3	8.7	0.0	0.0		-	88	30	1010	1008
14	17.6	3.6	10.6	5.6	7.4	0.0	0.0		-	86	41	1008	998
15	13.6	2.5	8.1	3.1	9.9	0.0	0.2		-	89	55	1007	1002
16	8.6	3.8	6.2	1.2	11.8	0.0	0.7		-	90	62	1020	1005
17	7.6	1.6	4.6	0.0	13.4	0.0	0.0		-	88	58	1022	1014
18	17.6	3.1	10.4	5.4	7.6	0.0	0.0		-	80	40	1013	1002
19	19.5	2.8	11.2	6.2	6.8	0.0	0.0		-	83	33	1011	1006
20	20.3	2.9	11.6	6.6	6.4	0.0	0.0		-	91	37	1009	1002
21	23.2	11.4	17.3	12.3	0.7	0.0	0.0		-	83	29	1002	999
22	11.4	4.7	8.1	3.1	9.9	0.0	1.5		-	95	68	1006	1001
23	12.5	0.3	6.4	1.4	11.6	0.0	0.0		-	97	67	1005	998
24	10.6	3.9	7.3	2.3	10.7	0.0	0.0		-	82	47	1011	998
25	8.1	1.0	4.6	0.0	13.4	0.0	0.0		-	83	51	1015	1008
26	6.8	0.3	3.6	0.0	14.4	0.0	0.0		-	86	63	1007	997
27	3.6	-0.6	1.5	0.0	16.5	0.0	2.7		-	95	85	1015	1001
28	0.3	-2.8	-1.3	0.0	19.3	0.0	0.5		-	95	79	1018	1014
29	0.8	-1.6	-0.4	0.0	18.4	0.0	0.0		-	93	83	1023	1011
30	1.1	-4.3	-1.6	0.0	19.6	0.0	0.0		-	86	61	1031	1023
31	4.8	-3.7	0.6	0.0	17.4	0.0	0.0		-	86	64	1025	1004
Total				78.1	364.7	0.0	6.1						
Avg	11.1	1.3	6.2				411.3	Cumulative ppt 2014					
Extreme	23.2	-4.3					2.7		0	97	29	1031	997
Date	21	30					27			23	7	30	6
Site Extreme	19.2	-14.6					37.6	Site was winterized on 9 Oct 2014. Automated diffuse shield adjusted due to misalignment (Oct 1-9). Replaced NL115 (21 Oct 2014) due to equipment malfunction.					
Date	07/2013	28/2012					2012						

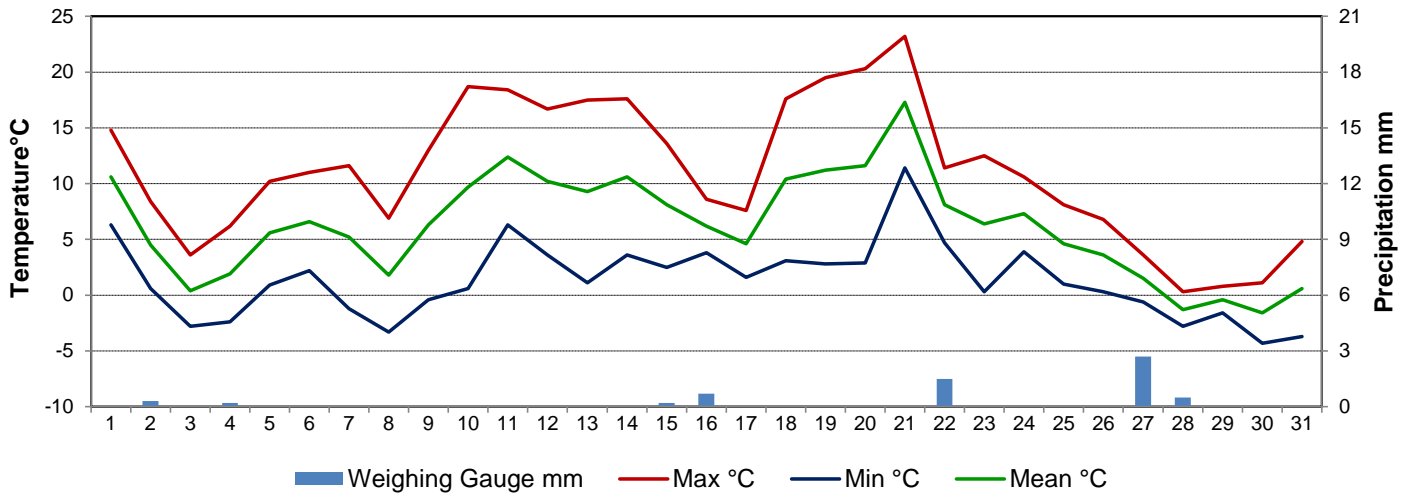


Agriculture and Agri-Food Canada

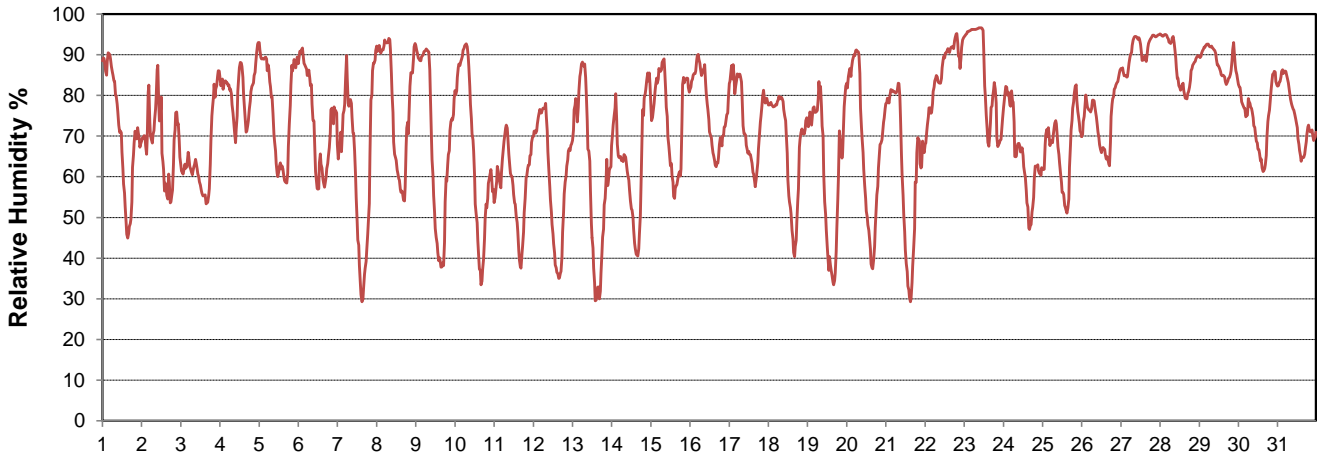
Agriculture et Agroalimentaire Canada



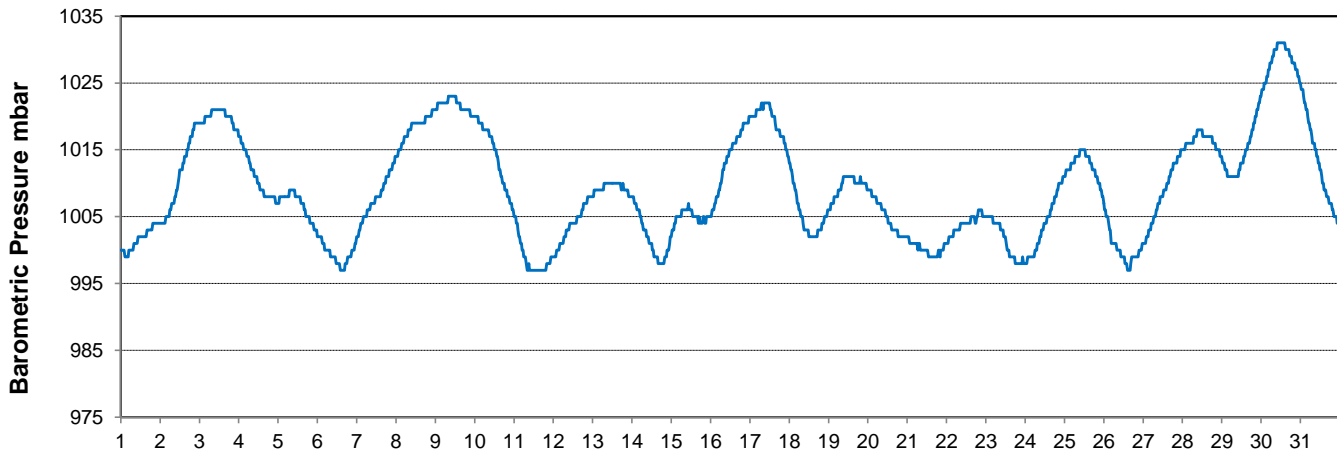
Temperature and Precipitation for October 2014



Relative Humidity for October 2014



Barometric Pressure Corrected to Sea Level for October 2014





SRC CLIMATE REFERENCE STATION DAILY DATA REPORT

CONSERVATION LEARNING CENTRE

Saskatchewan 53.03°N 105.77°W Estab. 2011

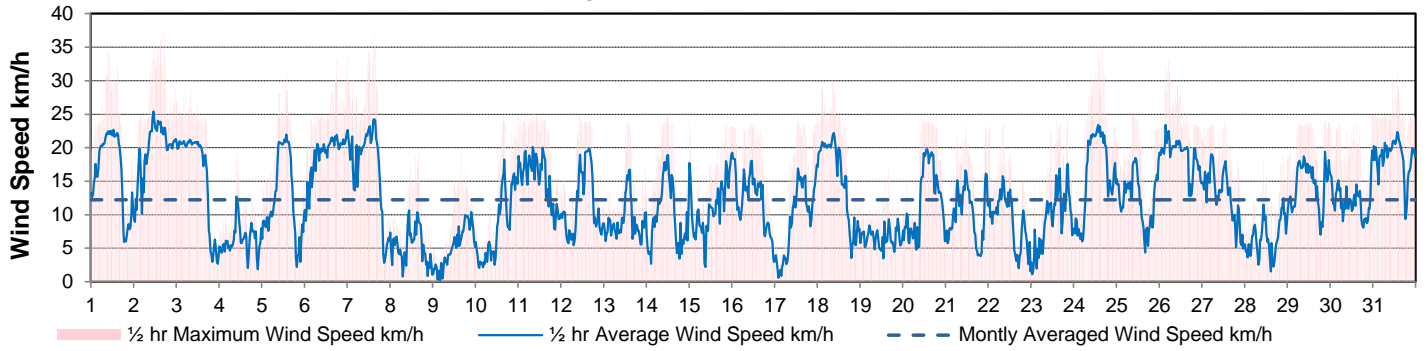
Preliminary **October 2014**

Day	Wind Gust			Soil Temperatures at 0900hrs								Soil Moisture 30 cm	Radiation		
	Max	Direction	Time	Surface	5 cm	10 cm	20 cm	50 cm	100 cm	150 cm	300 cm	0900hrs	Bright Sunshine	Global	Diffuse
	km/h			°C	°C	°C	°C	°C	°C	°C	°C	%	hours	MJ/m ²	MJ/m ²
1	34.4	NNW	10:19	8.5	11.0	10.5	10.5	11.0	11.0	10.5	7.5	32	7.7	11.3	
2	36.7	NW	17:32	4.0	9.5	10.0	11.0	11.5	11.5	11.0	8.5	31	1.2	5.7	
3	28.6	WNW	8:13	1.0	7.0	7.5	8.5	9.5	10.0	10.0	6.5	31	2.5	5.7	
4	19.3	WSW	9:59	2.5	6.0	6.0	7.0	9.0	10.5	10.0	6.5	30	0.1	3.9	
5	31.2	NW	13:41	4.0	6.0	5.0	6.0	7.5	9.0	9.0	5.5	30	8.2	11.0	
6	33.2	NW	18:04	4.0	7.0	7.0	8.0	9.5	11.0	10.5	8.0	30	2.3	6.4	
7	36.6	NNW	15:08	5.0	8.0	7.5	8.5	9.5	10.5	10.5	8.0	30	9.3	11.9	
8	19.2	NE	16:20	-0.5	6.0	7.0	8.5	10.0	11.0	11.0	8.5	29	9.7	11.4	
9	19.8	SE	15:57	3.5	6.5	7.0	8.0	9.5	10.5	11.0	8.5	29	7.9	9.3	
10	24.1	S	16:10	3.5	6.5	7.0	8.0	9.5	10.5	11.0	8.5	29	5.7	8.1	3.8
11	25.2	SSW	8:45	8.5	7.5	8.0	8.5	9.5	10.5	10.5	8.5	29	9.1	9.8	2.9
12	24.8	WNW	10:08	6.0	7.0	7.5	8.5	9.5	10.5	10.5	8.5	29	10.0	10.7	1.3
13	24.4	WSW	14:00	3.5	6.5	7.0	8.0	9.5	10.0	10.5	8.5	28	9.1	9.5	1.9
14	24.9	S	11:59	7.5	7.0	7.0	8.0	9.0	10.0	10.5	8.5	28	2.7	6.6	5.2
15	24.3	WNW	0:17	3.0	6.5	7.0	8.0	9.0	10.0	10.5	8.5	28	5.4	7.0	3.7
16	23.6	NE	10:52	6.0	7.5	7.5	8.0	8.5	9.5	10.0	8.0	28	2.7	5.7	3.9
17	24.4	SSE	23:30	3.5	7.0	7.5	8.0	9.0	10.0	10.0	8.5	27	3.3	5.6	3.3
18	30.3	S	8:58	5.5	6.5	6.5	7.5	8.5	9.5	10.0	8.5	27	5.8	7.6	3.0
19	17.0	SSW	16:21	4.0	6.0	6.5	7.5	8.5	9.5	10.0	8.5	27	9.8	9.2	1.0
20	24.2	S	14:31	4.5	6.5	6.5	7.5	8.5	9.5	10.0	8.5	27	9.9	9.0	1.3
21	23.1	NNW	22:39	7.0	6.5	7.0	7.5	8.5	9.5	9.5	8.5	27	1.6	7.1	2.1
22	23.4	NW	8:34	9.0	8.5	8.5	8.5	8.5	9.5	9.5	8.5	27	0.6	1.3	1.3
23	24.1	SW	20:34	4.0	6.5	7.0	8.0	9.0	9.5	9.5	8.5	26	3.3	4.5	2.4
24	34.4	W	13:43	6.0	7.0	7.0	7.5	8.5	9.0	9.5	8.5	26	5.2	6.6	3.5
25	24.8	W	9:22	1.5	5.5	6.0	7.5	8.5	9.0	9.5	8.5	26	7.7	7.5	2.4
26	32.9	E	5:01	1.0	5.0	5.5	6.5	8.0	9.0	9.5	8.5	26	4.3	5.4	3.8
27	24.2	NE	13:01	1.0	5.5	5.5	6.0	7.5	9.0	9.0	8.0	25	0.0	1.9	1.8
28	18.8	ESE	21:12	-2.0	5.0	5.0	6.0	7.5	8.5	9.0	8.0	25	2.6	3.5	2.7
29	24.1	NE	21:26	0.0	4.0	4.0	5.0	6.5	8.0	8.5	7.5	25	0.0	2.0	1.9
30	24.7	SSE	23:20	-2.0	3.5	3.5	4.5	6.0	8.0	8.5	7.0	25	5.8	6.5	2.4
31	31.2	S	13:50	-1.0	3.0	3.0	4.5	6.5	8.0	9.0	8.0	25	2.4	11.4	5.5
Total													155.9	223.1	61.1
Mean				3.6	6.5	6.7	7.6	8.7	9.7	9.9	8.1	27.8			
Extreme	36.7	NW	17:32												
Date	2														

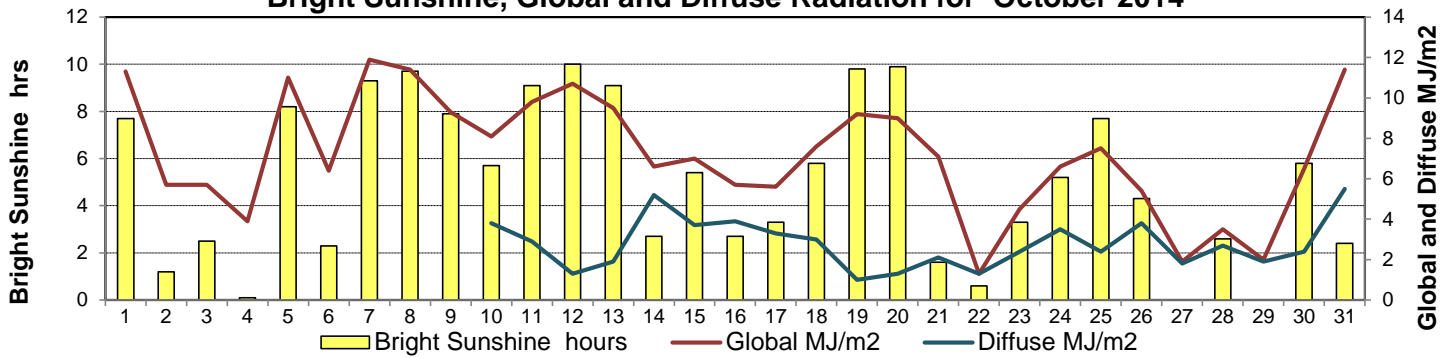
GLOSSARY OF TERMS

Tm	Mean Temperature	Bright Sunshine	is the unobstructed direct radiation from the sun, as opposed to the shading of a location by clouds or by other atmospheric obstructions.
Growing	(Tm-5°C); if Tm ≤ 5°C then GDD = 0		
Heating	(18°C-Tm); if Tm ≥ 18°C then HDD = 0	Diffuse	is radiation reaching the earth's surface after having been scattered from the direct solar beam
Cooling	(Tm-18°C); if Tm ≤ 18°C then CDD = 0		
T	Trace of Precipitation	Relative Humidity	The ratio of the air's water vapour content to its water vapour capacity which changes with temperature.
SOG	Depth of snow-on-the-ground		
Red Cell	no data available	Air Pressure	The force exerted by the weight of a column of air above a given point
Red Number	manual calculation	Wind Gust	The daily highest instantaneous value recorded irrespective of direction and/or duration

Wind Speed for October 2014

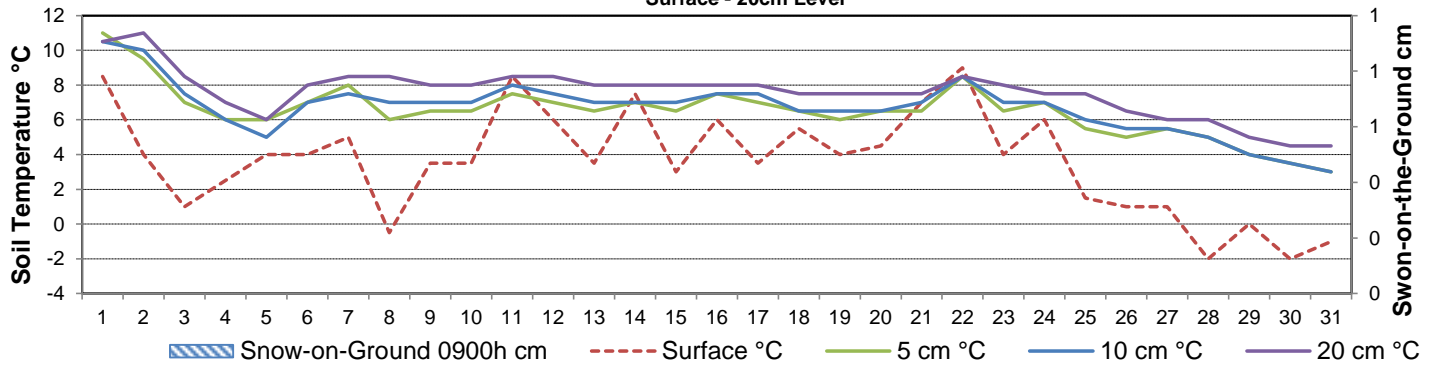


Bright Sunshine, Global and Diffuse Radiation for October 2014



Soil Temperatures for October 2014

Surface - 20cm Level



Soil Temperatures for October 2014

50 - 300cm Level

