



SRC CLIMATE REFERENCE STATION DAILY DATA REPORT

CONSERVATION LEARNING CENTRE

Saskatchewan 53.03°N 105.77°W Estab. 2011

Preliminary **September 2014**

Day	Temperature			Degree-days			Precipitation			Relative Humidity		Station Pressure <i>corrected to sea level</i>	
	Max	Min	Mean	Growing	Heating	Cooling	Weighing Gauge	Tipping Bucket	Snow-on-Ground 0900h	Max ½ hr Avg	Min ½ hr Avg	Max ½ hr Avg	Min ½ hr Avg
	°C	°C	°C	5°C base	18°C base	18°C base	mm	mm	cm	%	%	mbar	mbar
1	20.3	8.1	14.2	9.2	3.8	0.0	3.7	4.8	-	90	42	1006	1004
2	18.7	8.7	13.7	8.7	4.3	0.0	0.0	0.2	-	94	50	1005	1003
3	17.9	10.4	14.2	9.2	3.8	0.0	1.3	1.8	-	92	52	1011	1005
4	19.2	7.6	13.4	8.4	4.6	0.0	0.0	0.0	-	92	37	1015	1011
5	17.0	9.3	13.2	8.2	4.8	0.0	0.0	0.0	-	89	44	1018	1013
6	19.1	9.5	14.3	9.3	3.7	0.0	0.1	0.4	-	88	51	1017	1010
7	23.6	8.3	16.0	11.0	2.0	0.0	0.0	0.2	-	91	44	1010	1004
8	8.5	5.4	7.0	2.0	11.0	0.0	1.3	1.8	-	92	55	1020	1007
9	8.1	1.2	4.7	0.0	13.3	0.0	0.0	0.0	-	83	43	1027	1020
10	6.7	1.9	4.3	0.0	13.7	0.0	0.0	0.0	-	80	45	1031	1027
11	10.1	2.3	6.2	1.2	11.8	0.0	0.0	0.0	-	80	34	1032	1025
12	14.0	-0.3	6.9	1.9	11.1	0.0	0.0	0.0	-	86	36	1025	1015
13	10.9	4.3	7.6	2.6	10.4	0.0	1.2	1.6	-	90	53	1018	1014
14	15.8	0.0	7.9	2.9	10.1	0.0	0.0	0.2	-	96	36	1018	1016
15	21.0	1.8	11.4	6.4	6.6	0.0	0.0	0.0	-	90	41	1016	1012
16	19.3	3.9	11.6	6.6	6.4	0.0	0.0	0.0	-	94	53	1014	1011
17	14.6	3.6	9.1	4.1	8.9	0.0	0.0	0.0	-	96	63	1015	1008
18	19.1	6.6	12.9	7.9	5.1	0.0	0.0	0.0	-	94	59	1007	997
19	21.5	9.8	15.7	10.7	2.3	0.0	0.0	0.0	-	95	45	1004	999
20	19.5	6.5	13.0	8.0	5.0	0.0	0.0	0.0	-	88	40	1018	1004
21	26.2	3.8	15.0	10.0	3.0	0.0	0.0	0.0	-	94	28	1019	1013
22	28.7	8.1	18.4	13.4	0.0	0.4	0.0	0.0	-	84	25	1013	1006
23	29.2	9.8	19.5	14.5	0.0	1.5	0.0	0.0	-	90	30	1009	1005
24	24.6	9.5	17.1	12.1	0.9	0.0	0.0	0.0	-	96	42	1011	1006
25	25.2	13.3	19.3	14.3	0.0	1.3	0.0	0.0	-	76	37	1011	1006
26	23.5	10.3	16.9	11.9	1.1	0.0	0.0	0.0	-	82	49	1011	1003
27	11.8	4.7	8.3	3.3	9.7	0.0	0.0	0.0	-	83	55	1028	1011
28	7.9	1.6	4.8	0.0	13.2	0.0	0.0	0.0	-	88	62	1030	1024
29	14.5	0.0	7.3	2.3	10.7	0.0	0.0	0.0	-	92	51	1024	1007
30	13.7	10.2	12.0	7.0	6.0	0.0	0.0	0.0	-	92	73	1006	1000
Total				207.1	187.3	3.2	7.6	11					
Avg	17.7	6.0	11.9				405.2	Cumulative ppt 2014					
Extreme	29.2	-0.3					3.7	4.8	0	96	25	1032	997
Date	23	12					1	1		14	22	11	18
Site Extreme	33.8	-3.0						15.6					
Date	08/2011	14/2011						2012					

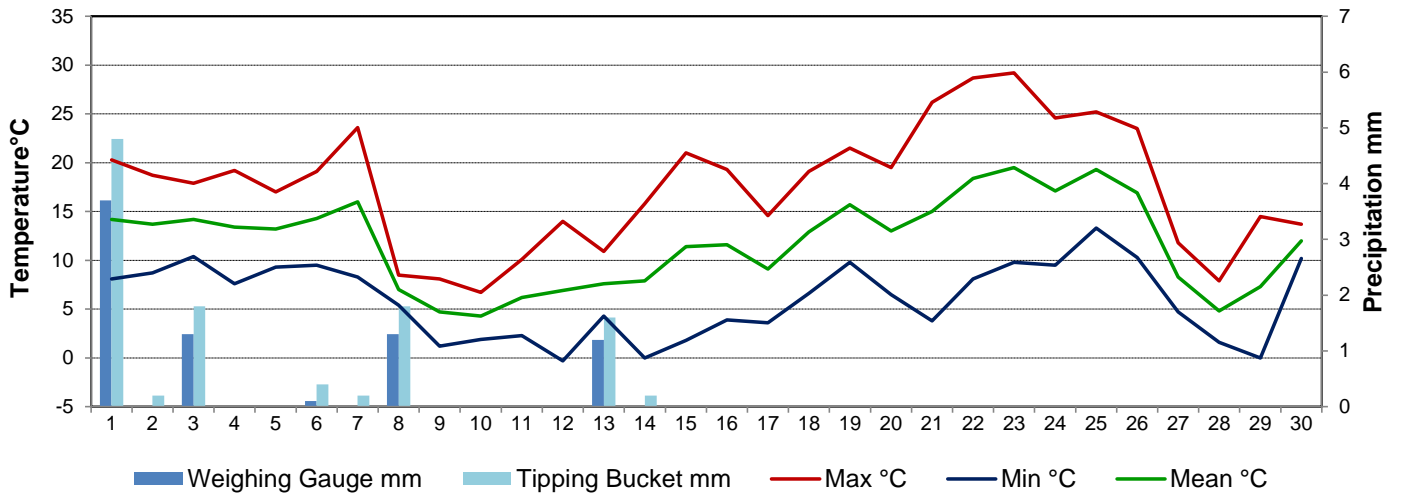


Agriculture and Agri-Food Canada

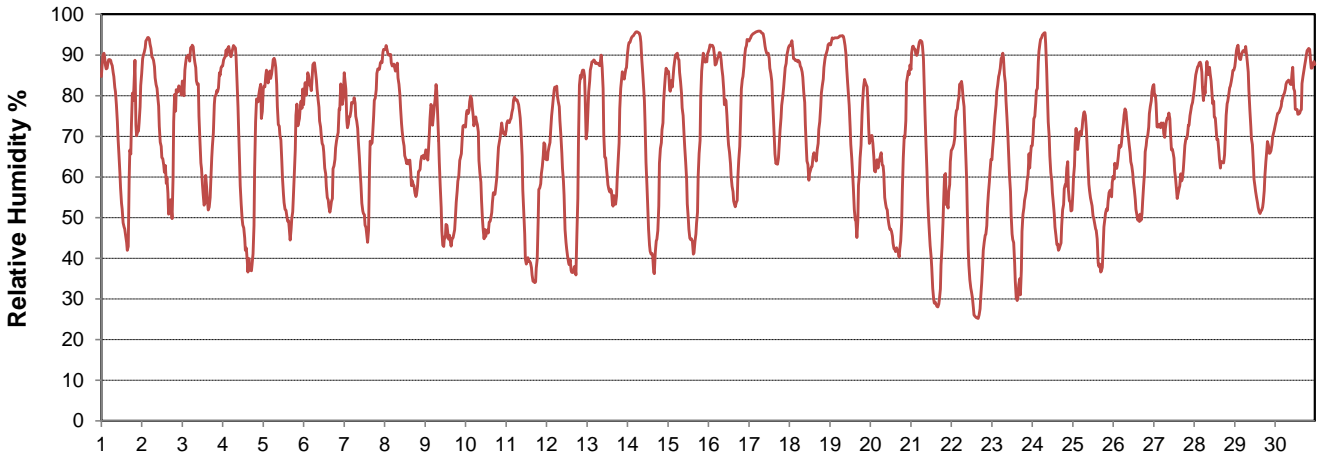
Agriculture et Agroalimentaire Canada



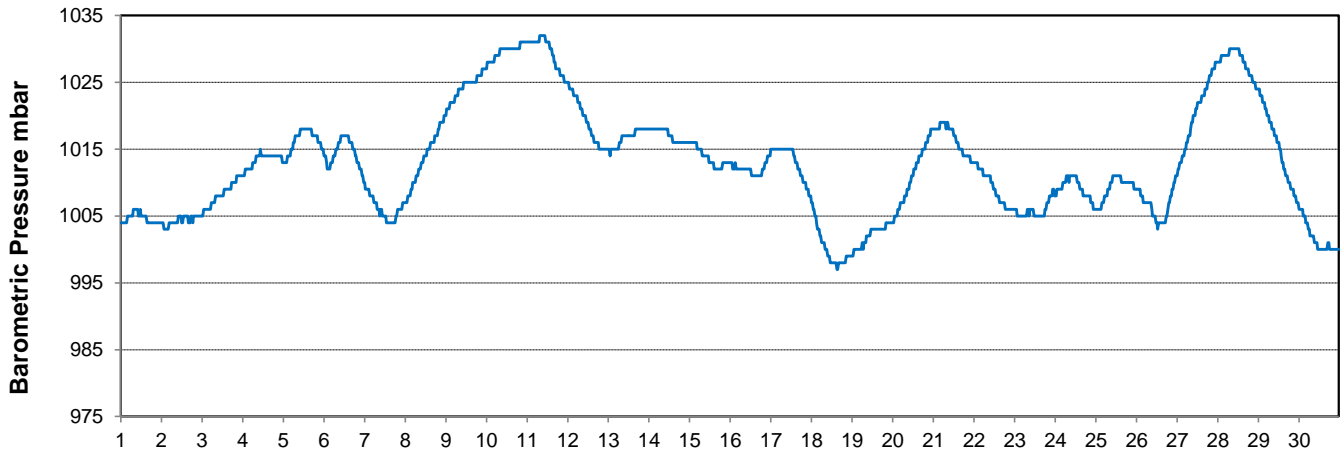
Temperature and Precipitation for September 2014



Relative Humidity for September 2014



Barometric Pressure Corrected to Sea Level for September 2014





SRC CLIMATE REFERENCE STATION DAILY DATA REPORT

CONSERVATION LEARNING CENTRE

Saskatchewan 53.03°N 105.77°W Estab. 2011

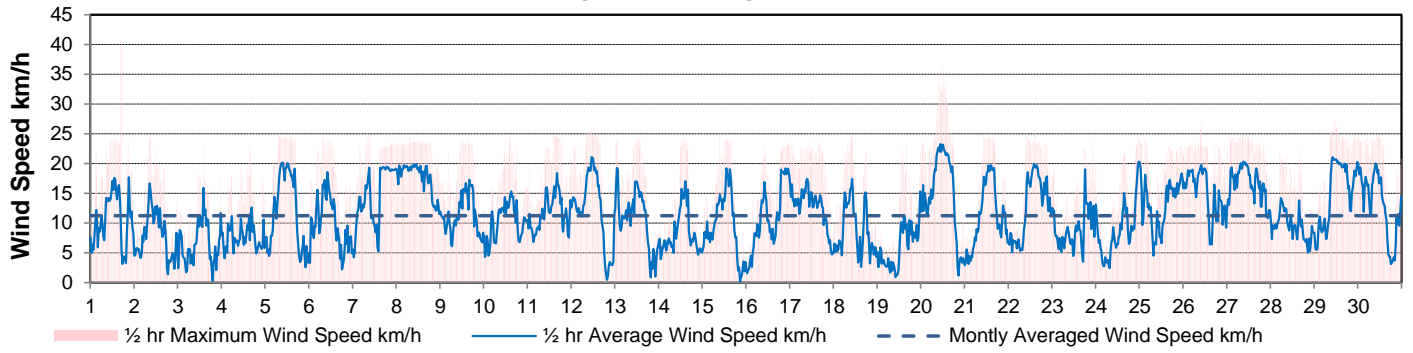
Preliminary **September 2014**

Day	Wind Gust			Soil Temperatures at 0900hrs								Soil Moisture 30 cm	Radiation		
	Max	Direction	Time	Surface	5 cm	10 cm	20 cm	50 cm	100 cm	150 cm	300 cm	0900hrs	Bright Sunshine	Global	Diffuse
	km/h			°C	°C	°C	°C	°C	°C	°C	°C	%	hours	MJ/m ²	MJ/m ²
1	40.6	WNW	17:00	11.5	13.0	13.5	13.5	13.5	12.5	11.0	5.5	38	9.2	17.5	5.5
2	24.5	NW	8:39	12.0	13.0	13.0	13.5	13.0	12.5	11.0	5.0	39	8.0	14.3	9.1
3	23.2	N	14:12	12.5	14.0	13.5	13.5	12.5	12.0	11.0	5.5	39	4.1	11.6	6.2
4	23.0	W	15:06	10.5	12.5	13.0	13.0	12.5	12.0	10.5	5.0	38	9.9	17.3	6.6
5	24.6	NW	8:49	12.0	13.5	13.5	14.0	13.5	12.5	11.5	6.5	38	9.3	16.7	6.0
6	24.5	NW	8:13	12.5	13.0	13.0	13.5	12.5	12.0	11.0	6.0	38	9.3	16.5	6.3
7	24.9	SSW	9:13	14.5	13.5	13.5	14.0	13.0	12.5	11.0	6.0	38	9.2	14.5	7.6
8	24.3	NNE	7:47	6.5	13.0	13.5	13.5	13.0	12.5	11.0	5.5	37	0.3	6.5	5.7
9	23.9	N	11:48	4.0	10.0	10.0	11.0	11.5	11.5	10.5	4.0	37	7.8	13.5	8.0
10	24.2	N	14:10	4.5	10.0	9.5	10.5	12.0	12.0	11.0	5.5	37	1.0	7.9	6.7
11	24.8	SW	14:16	5.0	8.5	8.0	9.0	10.5	11.0	10.0	4.5	36	6.2	12.2	9.8
12	26.0	SW	11:24	4.5	9.5	10.0	11.5	13.0	13.0	12.0	8.0	36	10.8	15.1	7.2
13	24.1	NNW	11:31	6.5	10.5	11.0	11.5	12.5	13.0	12.0	8.0	36	1.6	7.8	5.9
14	24.3	WSW	14:43	5.0	9.5	9.5	11.0	12.0	12.5	11.5	7.5	36	6.0	11.9	6.7
15	24.6	WSW	9:47	7.5	9.5	10.0	11.0	12.0	12.5	12.0	8.0	36	6.5	12.1	6.2
16	23.5	ENE	23:07	9.0	11.0	11.0	11.5	12.0	12.5	12.0	8.0	36	11.5	15.9	4.9
17	23.9	NE	0:06	7.0	11.0	11.0	11.5	11.5	12.0	11.5	7.5	35	3.9	7.9	6.9
18	24.8	S	10:00	11.5	10.5	10.5	11.0	11.5	11.5	11.0	7.5	35	6.0	10.2	6.6
19	23.1	NW	16:10	12.0	12.0	12.0	12.0	12.0	12.0	11.5	8.0	35	5.5	11.1	6.1
20	36.2	NNW	12:16	13.0	12.0	12.0	12.5	12.0	12.0	11.5	8.0	35	8.2	12.5	6.0
21	25.1	SW	10:52	8.5	10.5	11.0	12.0	12.5	12.0	11.5	8.5	35	11.8	15.2	4.0
22	25.6	SSW	14:15	12.5	11.0	11.5	12.0	12.5	12.0	11.5	8.5	34	11.8	15.2	4.8
23	23.7	WSW	22:21	13.5	12.0	12.0	12.5	12.5	12.0	11.5	8.5	34	10.1	13.3	5.7
24	25.0	S	23:38	13.0	12.5	13.0	13.0	12.5	12.0	11.5	8.5	34	9.1	11.4	6.2
25	24.3	SSW	2:52	15.5	13.0	13.5	13.5	12.5	12.0	11.5	8.5	34	11.2	13.0	6.5
26	27.0	NE	10:03	13.0	13.0	13.5	13.5	13.0	12.0	11.5	8.5	33	11.2	13.5	6.8
27	26.0	WNW	10:08	8.5	12.5	13.0	13.0	13.0	12.0	11.5	8.5	32	2.2	7.6	6.3
28	22.3	SSE	15:41	4.0	11.0	11.0	12.0	12.5	12.0	11.0	8.5	32	2.1	7.4	6.3
29	27.2	S	11:34	6.0	9.0	9.0	10.5	11.5	11.5	11.0	7.5	32	11.0	13.2	9.4
30	24.8	S	10:08	11.0	11.0	10.5	11.0	11.5	11.5	11.0	8.0	31	0.0	2.6	2.4
Total													214.8	365.4	192.4
Mean				9.6	11.5	11.6	12.2	12.3	12.1	11.3	7.1	35.5			
Extreme	40.6	WNW	17:00												
Date	1														
Site Extreme															

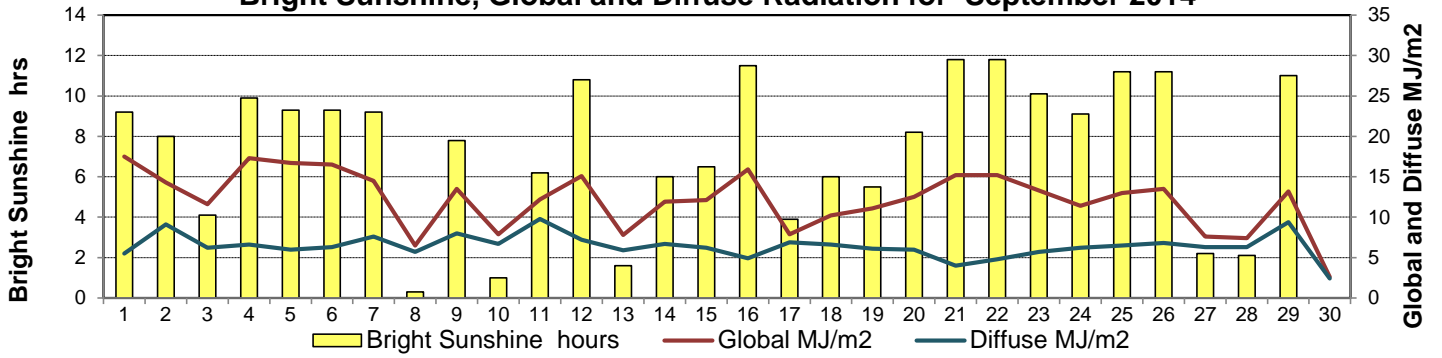
GLOSSARY OF TERMS

Tm Mean Temperature	Bright Sunshine is the unobstructed direct radiation from the sun, as opposed to the shading of a location by clouds or by other atmospheric obstructions.
Growing (Tm-5°C); if Tm ≤ 5°C then GDD = 0	Diffuse is radiation reaching the earth's surface after having been scattered from the direct solar beam
Heating (18°C-Tm); if Tm ≥ 18°C then HDD = 0	Global is the sum of the direct solar and diffuse radiation
Cooling (Tm-18°C); if Tm ≤ 18°C then CDD = 0	Relative Humidity The ratio of the air's water vapour content to its water vapour capacity which changes with temperature.
T Trace of Precipitation	
SOG Depth of snow-on-the-ground	
Red Cell no data available	Air Pressure The force exerted by the weight of a column of air above a given point
Red Number manual calculation	Wind Gust The daily highest instantaneous value recorded irrespective of direction and/or duration

Wind Speed for September 2014

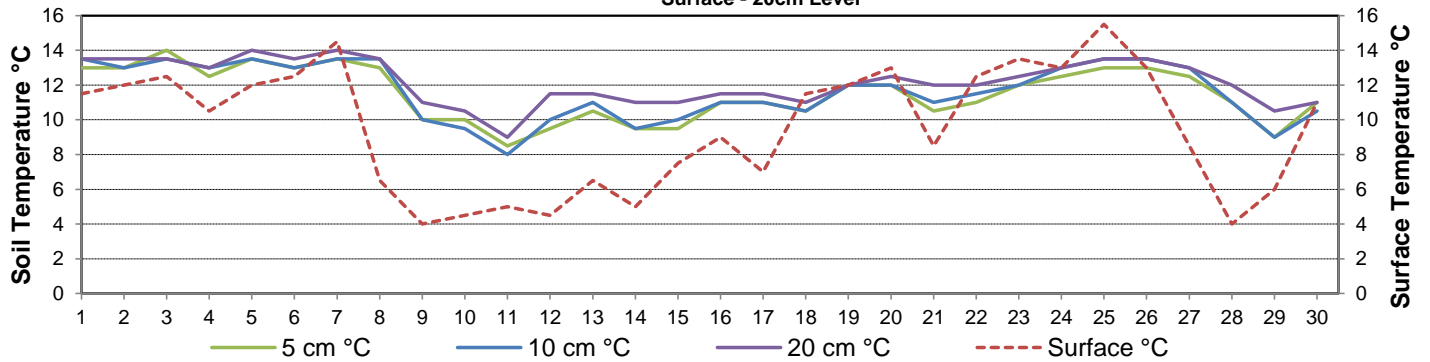


Bright Sunshine, Global and Diffuse Radiation for September 2014



Soil Temperatures for September 2014

Surface - 20cm Level



Soil Temperatures for September 2014

50 - 300cm Level

