



# SRC CLIMATE REFERENCE STATION DAILY DATA REPORT

## CONSERVATION LEARNING CENTRE

Saskatchewan 53.03°N 105.77°W Estab. 2011

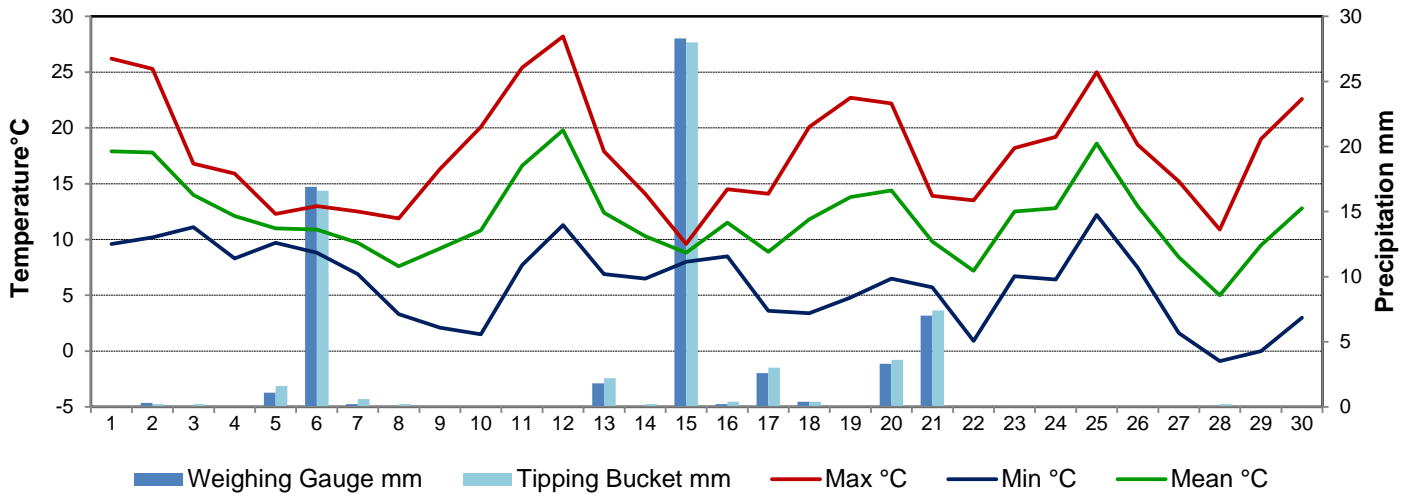
Preliminary **September 2015**

Day	Temperature			Degree-days			Precipitation			Relative Humidity		Station Pressure <i>corrected to sea level</i>	
	Max	Min	Mean	Growing	Heating	Cooling	Weighing Gauge	Tipping Bucket	Snow-on-Ground 0900h	Max ½ hr Avg	Min ½ hr Avg	Max ½ hr Avg	Min ½ hr Avg
	°C	°C	°C	5°C base	18°C base	18°C base	mm	mm	cm	%	%	mbar	mbar
1	26.2	9.6	17.9	12.9	0.1	0.0	0.0	0.0	0	87	29	1006	1001
2	25.3	10.2	17.8	12.8	0.2	0.0	0.3	0.2	0	93	34	1007	1000
3	16.8	11.1	14.0	9.0	4.0	0.0	0.0	0.2	0	93	61	1014	1003
4	15.9	8.3	12.1	7.1	5.9	0.0	0.0	0.0	0	89	55	1019	1014
5	12.3	9.7	11.0	6.0	7.0	0.0	1.1	1.6	0	88	71	1019	1013
6	13.0	8.8	10.9	5.9	7.1	0.0	16.9	16.6	0	94	74	1011	1002
7	12.5	6.9	9.7	4.7	8.3	0.0	0.2	0.6	0	95	64	1010	1002
8	11.9	3.3	7.6	2.6	10.4	0.0	0.0	0.2	0	92	56	1013	1010
9	16.3	2.1	9.2	4.2	8.8	0.0	0.0	0.0	0	94	40	1017	1013
10	20.1	1.5	10.8	5.8	7.2	0.0	0.0	0.0	0	95	34	1020	1017
11	25.4	7.7	16.6	11.6	1.4	0.0	0.0	0.0	0	89	37	1019	1011
12	28.2	11.3	19.8	14.8	0.0	1.8	0.0	0.0	0	89	30	1010	1002
13	17.9	6.9	12.4	7.4	5.6	0.0	1.8	2.2	0	93	46	1005	1003
14	14.1	6.5	10.3	5.3	7.7	0.0	0.0	0.2	0	93	63	1009	1004
15	9.6	8.0	8.8	3.8	9.2	0.0	28.3	28.0	0	94	86	1008	1003
16	14.5	8.5	11.5	6.5	6.5	0.0	0.2	0.4	0	94	64	1009	1005
17	14.1	3.6	8.9	3.9	9.1	0.0	2.6	3.0	0	94	47	1010	1008
18	20.1	3.4	11.8	6.8	6.2	0.0	0.4	0.4	0	94	34	1010	1007
19	22.7	4.8	13.8	8.8	4.2	0.0	0.0	0.0	0	91	32	1007	1001
20	22.2	6.5	14.4	9.4	3.6	0.0	3.3	3.6	0	88	32	1003	999
21	13.9	5.7	9.8	4.8	8.2	0.0	7.0	7.4	0	93	45	1015	997
22	13.5	0.9	7.2	2.2	10.8	0.0	0.0	0.0	0	93	42	1021	1015
23	18.2	6.7	12.5	7.5	5.5	0.0	0.0	0.0	0	73	32	1021	1016
24	19.2	6.4	12.8	7.8	5.2	0.0	0.0	0.0	0	92	59	1019	1016
25	25.0	12.2	18.6	13.6	0.0	0.6	0.0	0.0	0	88	49	1015	1007
26	18.5	7.5	13.0	8.0	5.0	0.0	0.0	0.0	0	90	41	1008	1004
27	15.2	1.6	8.4	3.4	9.6	0.0	0.0	0.0	0	84	31	1014	1006
28	10.9	-0.9	5.0	0.0	13.0	0.0	0.0	0.2	0	83	30	1018	1015
29	19.0	0.0	9.5	4.5	8.5	0.0	0.0	0.0	0	86	32	1017	1011
30	22.6	3.0	12.8	7.8	5.2	0.0	0.0	0.0	0	95	38	1017	1011
Total				208.9	183.5	2.4	62.1	64.8					
Avg	<b>17.8</b>	<b>6.1</b>	<b>12.0</b>				435.3	Cumulative ppt					
Extreme	28.2	-0.9					28.3	28.0	0	95	29	1021	997
Date	12	28					15	15		7	1	22	21

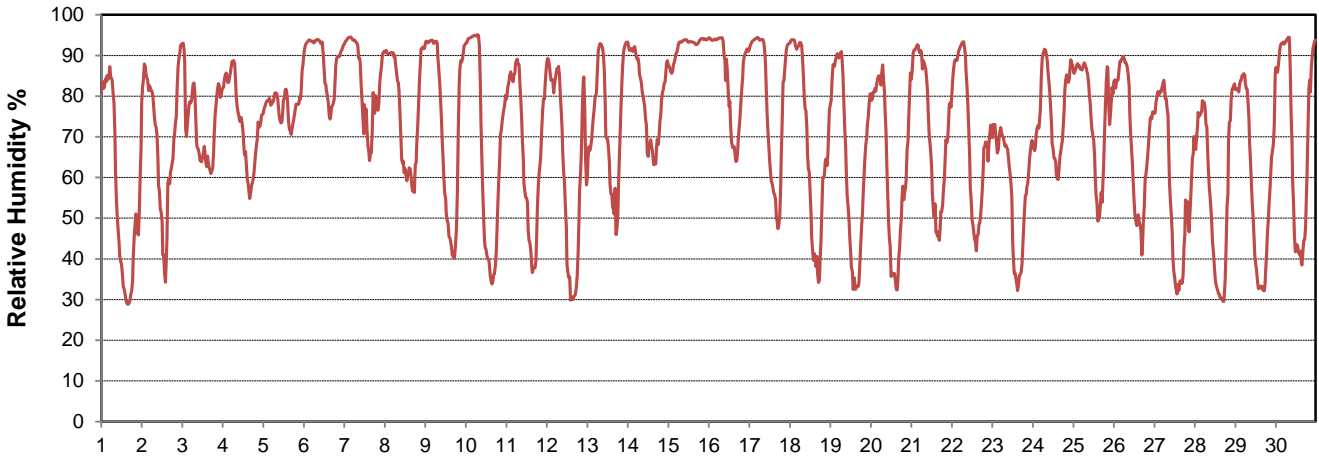
**SRC proudly recognizes the following CRS supporters:**



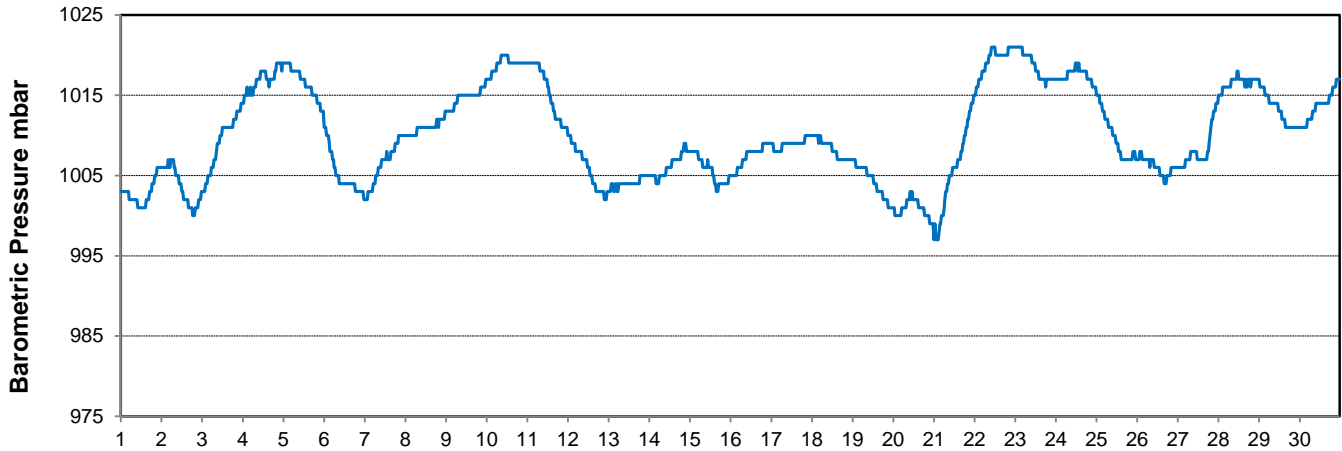
### Temperature and Precipitation for September 2015



### Relative Humidity for September 2015



### Barometric Pressure Corrected to Sea Level for September 2015





# SRC CLIMATE REFERENCE STATION DAILY DATA REPORT

## CONSERVATION LEARNING CENTRE

Saskatchewan 53.03°N 105.77°W Estab. 2011

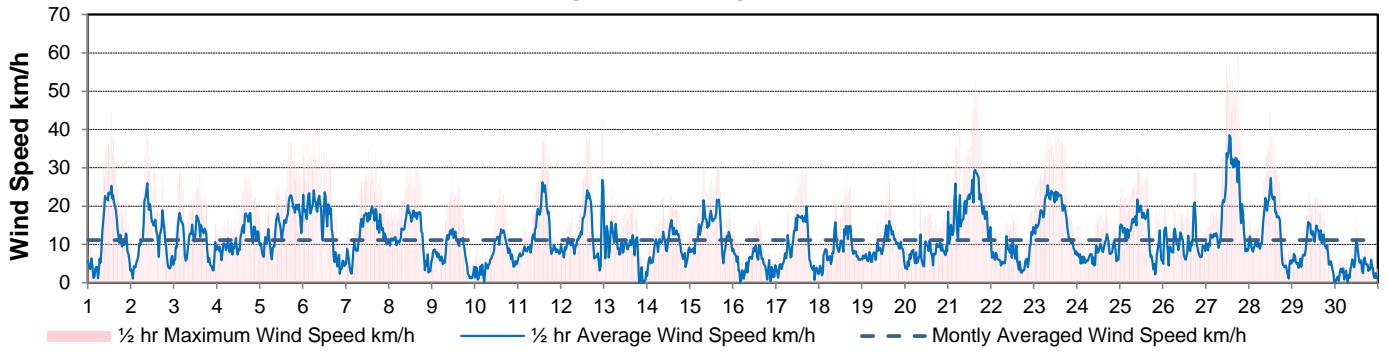
Preliminary **September 2015**

Day	Wind Gust			Soil Temperatures at 0900hrs								Soil Moisture	Radiation		
	Max	Direction	Time	Surface	5 cm	10 cm	20 cm	50 cm	100 cm	150 cm	300 cm	0900hrs	Bright Sunshine	Global	Diffuse
	km/h			°C	°C	°C	°C	°C	°C	°C	°C	%	hours	MJ/m <sup>2</sup>	MJ/m <sup>2</sup>
1	44.8	SW	13:22	15.5	15.0	15.5	15.5	15.5	14.0	12.5	8.0	38	12.0	18.8	
2	42.2	E	8:58	13.5	14.5	15.0	15.5	15.0	14.0	12.5	8.0	37	6.2	9.1	
3	29.7	W	3:56	14.5	15.0	15.0	15.5	15.0	13.5	12.0	8.0	37	6.4	12.9	
4	28.1	N	16:19	11.0	14.5	14.5	15.0	15.0	13.5	12.0	8.0	36	4.1	11.7	
5	36.8	ENE	17:30	11.0	14.5	14.5	15.0	14.5	13.5	12.0	8.0	36	0.0	3.7	
6	39.7	E	9:18	11.5	12.5	12.0	12.5	12.5	12.0	11.0	6.0	40	0.0	4.3	
7	35.1	NNW	12:48	9.5	13.0	12.0	13.0	12.5	12.5	11.5	6.5	39	1.2	9.1	
8	31.6	NW	15:19	7.5	12.5	11.5	12.5	12.5	12.0	11.0	6.0	39	4.9	10.8	
9	29.8	N	11:46	6.5	11.5	11.5	12.5	13.0	13.0	12.0	7.5	38	11.6	16.7	
10	25.0	SSW	13:35	8.5	11.0	11.5	12.5	13.5	13.0	12.0	8.0	38	12.5	17.3	2.0
11	40.6	SSW	13:55	11.5	12.0	12.0	12.5	13.0	13.0	12.0	8.0	38	9.2	15.1	6.7
12	42.9	NNE	23:39	14.0	13.0	13.0	13.0	13.0	13.0	12.0	8.0	37	12.0	16.6	2.2
13	24.8	N	4:21	11.0	13.5	13.5	13.5	13.5	13.0	12.0	8.0	37	5.8	11.0	5.6
14	23.0	NW	13:53	10.5	12.5	12.5	13.0	13.0	12.5	12.0	8.0	37	1.1	8.2	7.2
15	32.3	ENE	7:50	8.5	12.5	12.5	13.0	13.0	12.5	11.5	8.0	37	0.0	1.7	1.5
16	16.3	W	14:38	10.5	12.0	11.0	11.5	12.0	12.0	11.0	7.0	41	2.2	8.5	6.6
17	31.9	NW	17:02	9.5	12.0	12.0	12.5	12.0	12.0	11.5	7.5	42	6.9	12.0	5.0
18	28.6	W	15:42	8.0	11.0	11.0	12.0	12.5	12.0	11.5	8.0	41	10.0	13.5	5.1
19	29.1	SSW	15:01	9.0	11.0	11.5	12.5	12.5	12.5	11.5	8.5	40	10.5	13.5	4.0
20	29.8	NNW	5:04	10.0	11.5	11.5	12.5	12.5	12.5	11.5	8.5	40	9.3	13.1	4.2
21	52.4	W	15:40	7.0	12.0	12.0	12.0	12.0	12.0	11.5	8.0	42	5.6	11.8	4.2
22	22.3	E	23:58	4.5	10.5	11.0	12.0	12.5	12.0	11.5	8.5	41	7.9	12.6	2.3
23	40.4	SE	12:17	8.0	11.0	11.0	11.5	12.0	12.0	11.5	8.0	40	8.9	13.2	4.6
24	20.5	S	23:58	9.5	11.0	11.5	12.0	12.0	12.0	11.5	8.5	40	6.2	10.3	5.5
25	32.9	S	9:50	14.0	12.0	11.5	12.0	11.5	11.5	11.0	8.0	40	9.5	11.5	4.6
26	31.7	NNW	17:24	10.0	12.0	12.5	12.5	12.0	12.0	11.5	8.5	40	7.5	10.9	4.5
27	60.0	W	18:23	7.5	11.5	11.5	12.0	12.0	12.0	11.5	8.5	40	8.2	11.7	3.6
28	44.7	NW	12:18	3.0	10.0	10.5	11.5	12.0	12.0	11.5	8.5	39	11.0	13.8	2.1
29	24.0	SSW	9:53	6.5	9.0	9.5	10.5	12.0	12.0	11.5	8.5	39	5.1	9.2	6.0
30	17.0	ESE	12:16	7.0	9.5	10.0	11.0	11.5	12.0	11.5	8.5	39	11.1	13.0	1.5
Total													206.9	345.6	m
Mean				9.6	12.1	12.2	12.8	12.9	12.5	11.7	7.9	38.9			
Extreme	60.0	W	18:23										Automated Diffuse ring was out of alignment (Sept 1-9th)		
Date	27														

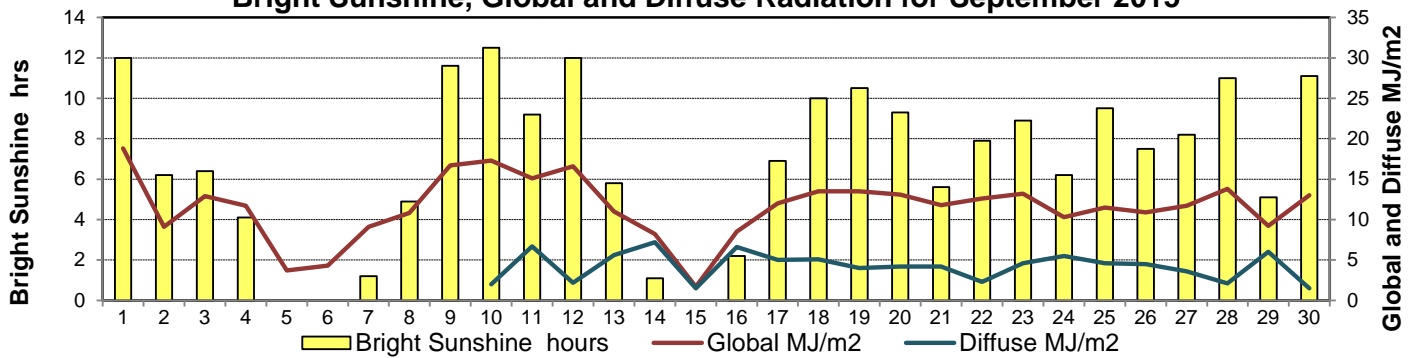
### GLOSSARY OF TERMS

<b>Degree-days</b>	<b>Radiation</b>
Tm Mean Temperature	Bright Sunshine is the unobstructed direct radiation from the sun, as opposed to the shading of a location by clouds or by other atmospheric obstructions.
Growing (Tm-5°C); if Tm ≤ 5°C then GDD = 0	
Heating (18°C-Tm); if Tm ≥ 18°C then HDD = 0	Diffuse is radiation reaching the earth's surface after having been scattered from the direct solar beam
Cooling (Tm-18°C); if Tm ≤ 18°C then CDD = 0	Global is the sum of the direct solar and diffuse radiation
T Trace of Precipitation	<b>Relative Humidity</b> The ratio of the air's water vapour content of its water vapour capacity which changes with temperature.
<b>SOG</b> Depth of snow-on-the-ground	
<b>Red Cell</b> no data available	<b>Air Pressure</b> The force exerted by the weight of a column of air above a given point
Red Number manual calculation	<b>Wind Gust</b> The daily highest instantaneous value recorded irrespective of direction and/or duration

### Wind Speed for September 2015

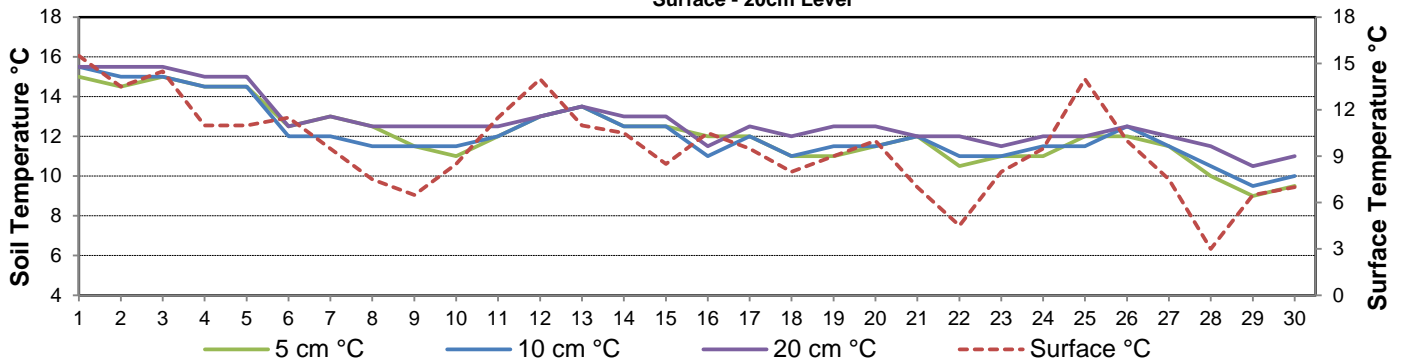


### Bright Sunshine, Global and Diffuse Radiation for September 2015



### Soil Temperatures for September 2015

Surface - 20cm Level



### Soil Temperatures for September 2015

50 - 300cm Level

