



# SRC CLIMATE REFERENCE STATION DAILY DATA REPORT

## CONSERVATION LEARNING CENTRE

Saskatchewan 53.03°N 105.77°W Estab. 2011

Preliminary **September 2019**

Day	Temperature			Degree-days			Precipitation			Relative Humidity		Station Pressure <i>corrected to sea level</i>	
	Max	Min	Mean	Growing	Heating	Cooling	Weighing Gauge	Tipping Bucket	Snow-on-Ground 0900h	Max ½ hr Avg	Min ½ hr Avg	Max ½ hr Avg	Min ½ hr Avg
	°C	°C	°C	5°C base	18°C base	18°C base	mm	mm	cm	%	%	mbar	mbar
1	20.1	2.6	11.4	6.4	6.6	0.0	0.3	0.0	-	100	45	1021	1017
2	12.5	8.5	10.5	5.5	7.5	0.0	16.2	14.8	-	100	83	1018	1007
3	24.4	7.4	15.9	10.9	2.1	0.0	0.0	0.0	-	100	42	1016	1012
4	16.9	6.4	11.7	6.7	6.3	0.0	0.7	0.8	-	100	77	1013	1010
5	21.9	8.8	15.4	10.4	2.6	0.0	0.0	0.2	-	100	49	1020	1012
6	20.1	5.0	12.6	7.6	5.4	0.0	0.0	0.0	-	100	44	1023	1020
7	21.6	5.9	13.8	8.8	4.2	0.0	0.0	0.0	-	100	44	1022	1015
8	19.8	10.8	15.3	10.3	2.7	0.0	0.0	0.0	-	95	59	1017	1015
9	11.7	8.4	10.1	5.1	7.9	0.0	0.0	0.0	-	99	87	1017	1016
10	9.6	7.0	8.3	3.3	9.7	0.0	6.5	5.8	-	100	95	1022	1017
11	12.0	7.7	9.9	4.9	8.1	0.0	1.6	1.6	-	100	96	1024	1022
12	14.8	6.5	10.7	5.7	7.3	0.0	0.0	0.2	-	100	75	1023	1017
13	20.3	2.1	11.2	6.2	6.8	0.0	0.1	0.2	-	100	50	1017	1007
14	23.5	4.6	14.1	9.1	3.9	0.0	0.0	0.0	-	100	44	1006	1005
15	26.2	7.1	16.7	11.7	1.3	0.0	0.0	0.0	-	100	34	1006	1004
16	32.1	7.5	19.8	14.8	0.0	1.8	0.0	0.0	-	100	35	1005	999
17	25.5	13.6	19.6	14.6	0.0	1.6	0.0	0.0	-	97	48	1004	1000
18	20.0	7.3	13.7	8.7	4.3	0.0	0.0	0.0	-	91	35	1013	1003
19	19.8	4.8	12.3	7.3	5.7	0.0	0.2	0.0	-	99	58	1014	1007
20	20.7	11.1	15.9	10.9	2.1	0.0	29.5	25.8	-	100	52	1008	1005
21	17.9	5.7	11.8	6.8	6.2	0.0	0.0	0.0	-	100	52	1009	1006
22	26.0	5.5	15.8	10.8	2.2	0.0	0.0	0.0	-	96	35	1006	1003
23	19.9	8.1	14.0	9.0	4.0	0.0	0.0	0.0	-	92	29	1003	999
24	15.6	7.1	11.4	6.4	6.6	0.0	0.5	0.4	-	78	48	1004	1001
25	16.3	2.5	9.4	4.4	8.6	0.0	5.0	4.6	-	97	37	1008	1004
26	11.8	0.1	6.0	1.0	12.0	0.0	0.0	0.0	-	100	48	1006	1001
27	6.4	-0.5	3.0	0.0	15.0	0.0	0.0	0.0	-	97	54	1020	1005
28	6.5	0.8	3.7	0.0	14.3	0.0	0.0	0.2	-	87	56	1027	1020
29	6.0	0.6	3.3	0.0	14.7	0.0	0.4	0.2	-	96	48	1028	1024
30	3.1	0.1	1.6	0.0	16.4	0.0	5.3	4.8	-	100	89	1024	1019
Total				207.3	194.5	3.4	66.3	59.6					
Avg	17.4	5.8	11.6				275.5	Cumulative ppt					
Extreme	32.1	-0.5					29.5	25.8	0	100	29	1028	999
Date	16	27					20	20		1	23	29	16

**SRC proudly recognizes the following CRS supporters:**

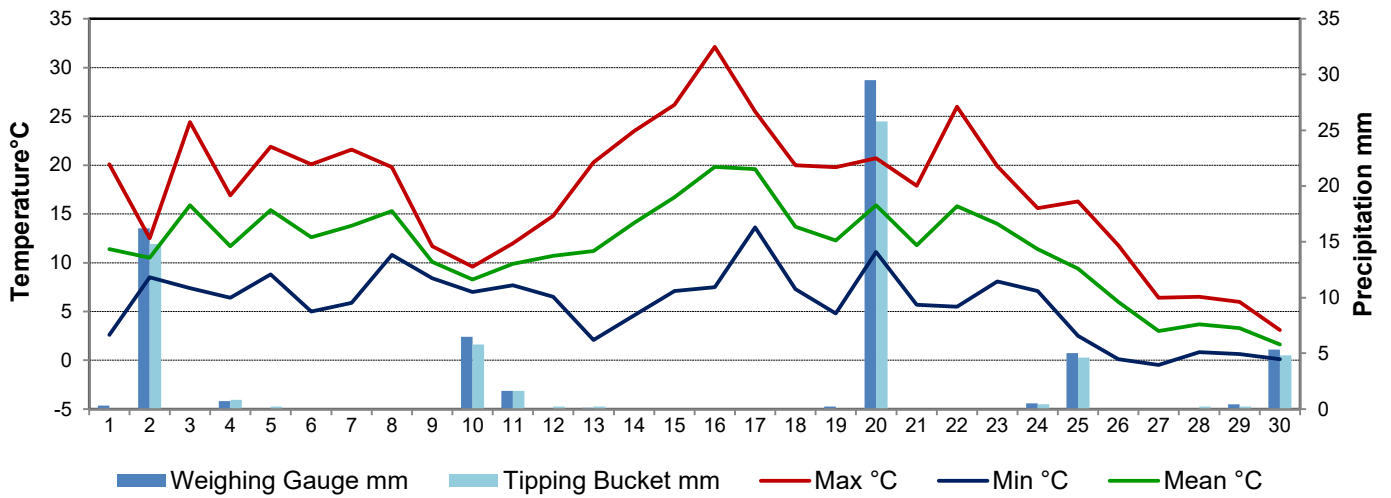


Agriculture and Agri-Food Canada

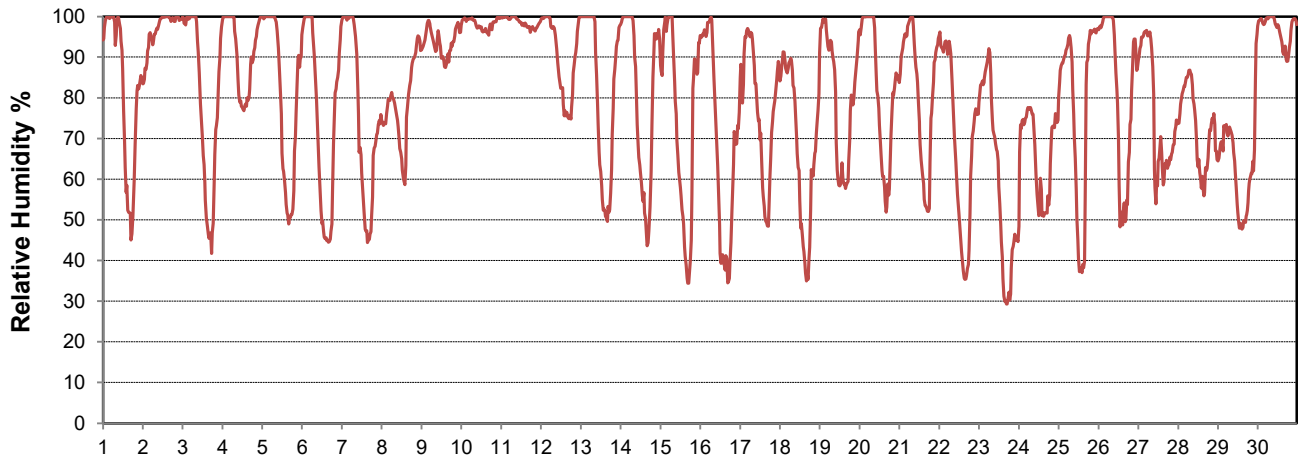
Agriculture et Agroalimentaire Canada



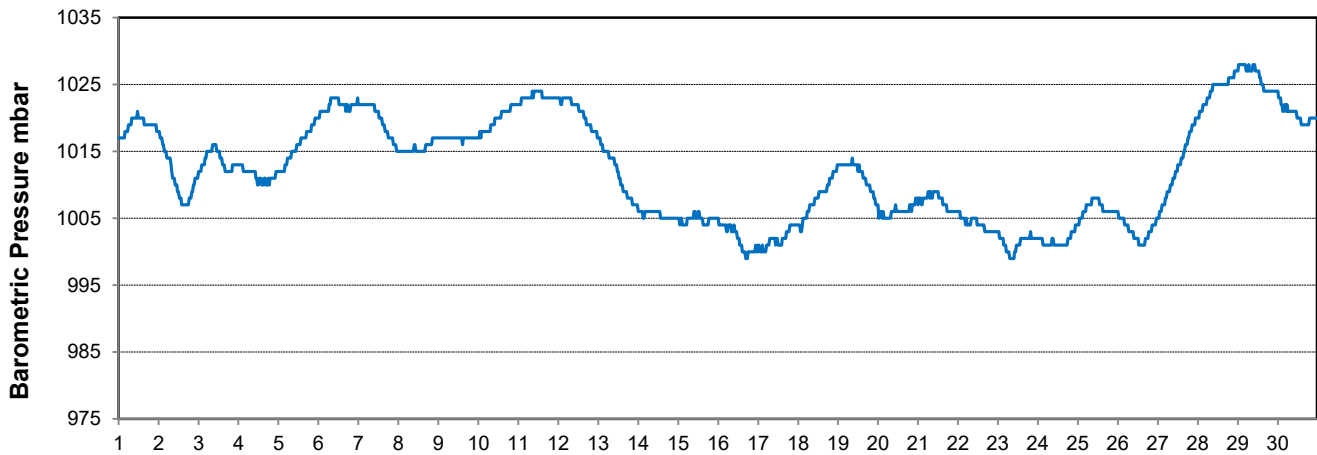
### Temperature and Precipitation for September 2019



### Relative Humidity for September 2019



### Barometric Pressure Corrected to Sea Level for September 2018





# SRC CLIMATE REFERENCE STATION DAILY DATA REPORT

## CONSERVATION LEARNING CENTRE

Saskatchewan 53.03°N 105.77°W Estab. 2011

Preliminary

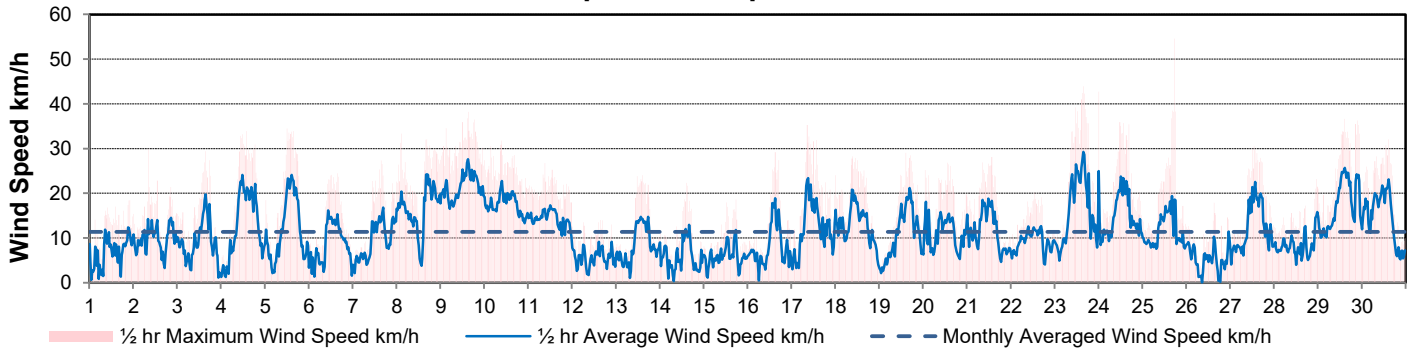
September 2019

Day	Wind Gust			Soil Temperatures at 0900hrs								Radiation				
	Max	Direction	Time	Surface	5 cm	10 cm	20 cm	50 cm	100 cm	150 cm	300 cm	Bright Sunshine	Possible	% Possible	Global	Diffuse
	km/h			°C	°C	°C	°C	°C	°C	°C	°C	hours	hours		MJ/m <sup>2</sup>	MJ/m <sup>2</sup>
1	18.4	ESE	22:04	9.0	11.5	12.0	13.0	13.5	12.5	11.0	7.0	8.5	13.7	62.2	14.5	5.4
2	30.0	E	8:18	10.0	12.5	12.5	13.0	13.0	12.5	11.0	7.0	0.0	13.6	0.0	2.2	2.0
3	29.4	SW	15:52	10.5	12.0	12.0	12.5	12.5	12.0	11.0	7.0	8.6	13.5	63.6	17.1	4.7
4	33.9	ENE	14:22	13.0	12.0	12.5	13.0	13.0	12.0	11.0	7.5	5.1	13.5	37.9	8.9	6.2
5	34.5	NW	12:00	13.0	13.0	13.0	13.0	12.5	12.0	11.0	7.0	6.8	13.4	50.8	13.0	6.2
6	24.5	N	15:31	12.0	11.5	12.0	13.0	13.0	12.0	11.0	7.5	12.3	13.3	92.3	19.0	3.0
7	27.3	S	15:47	10.5	11.5	12.0	13.0	13.0	12.0	11.0	7.5	8.6	13.3	64.9	14.4	6.9
8	33.3	SW	2:34	14.0	13.0	13.0	13.0	12.5	12.0	11.0	7.5	3.8	13.2	28.8	10.3	8.0
9	38.2	ENE	15:17	11.0	13.0	13.0	13.0	12.5	11.5	10.5	7.0	0.0	13.1	0.0	3.5	3.1
10	31.8	ENE	9:37	7.5	11.5	11.5	12.5	12.5	11.5	10.5	7.0	0.0	13.1	0.0	5.4	4.9
11	26.7	ENE	9:05	8.5	11.0	11.0	11.5	11.5	11.5	10.5	6.5	0.0	13.0	0.0	3.2	2.9
12	14.0	ESE	15:38	11.0	11.0	11.0	11.5	11.0	11.0	10.5	6.5	0.0	12.9	0.0	6.3	5.7
13	24.1	SSE	14:46	8.5	10.0	10.5	11.5	11.5	11.0	10.5	7.0	11.4	12.8	88.8	17.0	2.5
14	22.3	WSW	14:40	10.0	10.5	11.0	12.0	12.0	11.5	10.5	7.5	10.6	12.8	83.0	14.8	5.4
15	18.6	S	17:41	12.0	11.5	11.5	12.5	12.0	11.5	10.5	7.5	11.7	12.7	92.1	14.5	4.9
16	29.2	ESE	15:01	13.5	11.5	12.0	12.5	12.0	11.5	10.5	7.5	11.6	12.6	91.8	14.4	4.9
17	35.2	NNW	8:51	15.5	13.5	13.5	13.5	12.5	11.5	10.5	7.5	7.4	12.6	58.9	11.7	5.4
18	28.3	NNW	9:39	14.0	13.5	14.0	13.5	12.5	11.5	10.5	7.5	10.7	12.5	85.6	15.6	3.2
19	29.1	E	14:44	9.5	11.5	12.0	13.0	12.5	11.5	10.5	7.5	2.5	12.4	20.1	7.8	6.0
20	26.8	WSW	13:59	12.0	12.5	12.5	13.0	12.5	11.5	10.5	7.5	8.4	12.4	68.0	14.0	4.5
21	28.1	NNW	13:53	9.5	11.5	12.0	13.0	12.5	11.5	10.5	7.5	7.7	12.3	62.7	12.5	5.0
22	20.2	SW	13:29	11.0	10.5	11.0	12.0	12.5	11.5	10.5	7.5	11.7	12.2	95.7	15.1	1.9
23	43.9	WNW	15:47	13.5	11.0	11.5	12.0	12.5	11.5	10.5	7.5	6.7	12.2	55.1	11.0	5.2
24	42.7	NW	0:18	10.0	11.0	11.5	12.0	12.0	11.5	10.5	7.5	4.7	12.1	38.9	9.3	5.3
25	54.6	NW	17:48	6.0	9.5	10.0	11.5	12.0	11.5	10.5	8.0	8.7	12.0	72.4	13.1	2.4
26	17.9	NNE	15:08	3.0	8.5	9.5	10.5	11.5	11.5	10.5	8.0	7.2	12.0	60.3	10.4	6.1
27	30.6	NNW	13:26	3.5	8.0	9.0	10.0	11.5	11.5	10.5	8.0	1.3	11.9	10.9	5.7	4.9
28	23.1	NE	23:30	2.5	7.5	8.0	9.5	11.0	11.0	10.5	8.0	0.9	11.8	7.6	5.8	5.0
29	36.6	E	14:58	2.0	7.5	8.0	9.0	10.5	11.0	10.5	8.0	0.2	11.7	1.7	6.3	5.6
30	32.0	ENE	14:58	0.5	7.0	7.5	8.5	10.0	11.0	10.5	7.5	0.3	11.7	2.6	4.5	4.0
Total												177.4	380.0	46.7	321.3	141.2
Mean				9.6	11.0	11.4	12.1	12.1	11.6	10.6	7.4					
Extreme	54.6	NW	17:48													
Date	25															

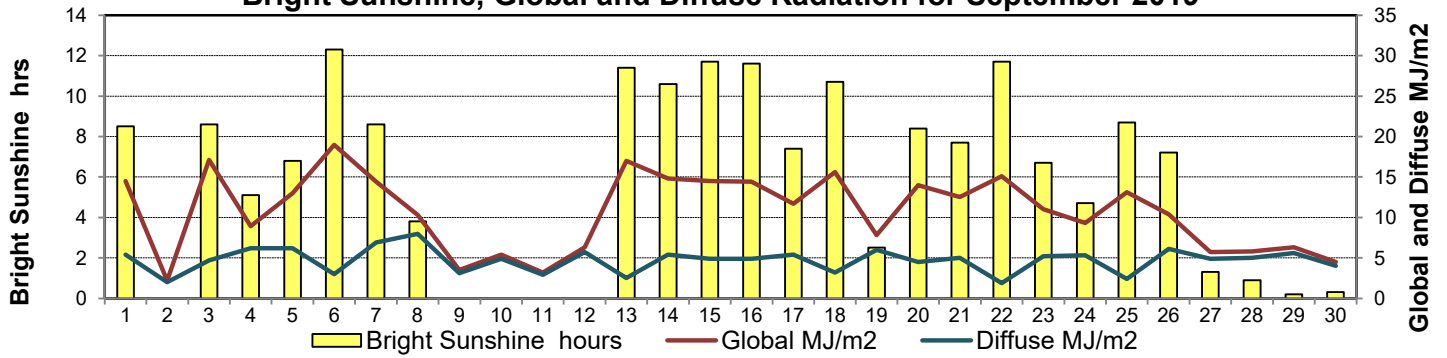
### GLOSSARY OF TERMS

<b>Degree-days</b>	<b>Radiation</b>
Tm Mean Temperature	Bright Sunshine is the unobstructed direct radiation from the sun, as opposed to the shading of a location by clouds or by other atmospheric obstructions.
Growing (Tm-5°C); if Tm ≤ 5°C then GDD = 0	
Heating (18°C-Tm); if Tm ≥ 18°C then HDD = 0	Diffuse is radiation reaching the earth's surface after having been scattered from the direct solar beam
Cooling (Tm-18°C); if Tm ≤ 18°C then CDD = 0	Global is the sum of the direct solar and diffuse radiation
T Trace of Precipitation	<b>Relative Humidity</b> The ratio of the air's water vapour content of its water vapour capacity which changes with temperature.
<b>SOG</b> Depth of snow-on-the-ground	
<b>Red Cell</b> no data available	<b>Air Pressure</b> The force exerted by the weight of a column of air above a given point
Red Number manual calculation	<b>Wind Gust</b> The daily highest instantaneous value recorded irrespective of direction and/or duration

### Wind Speed for September 2019

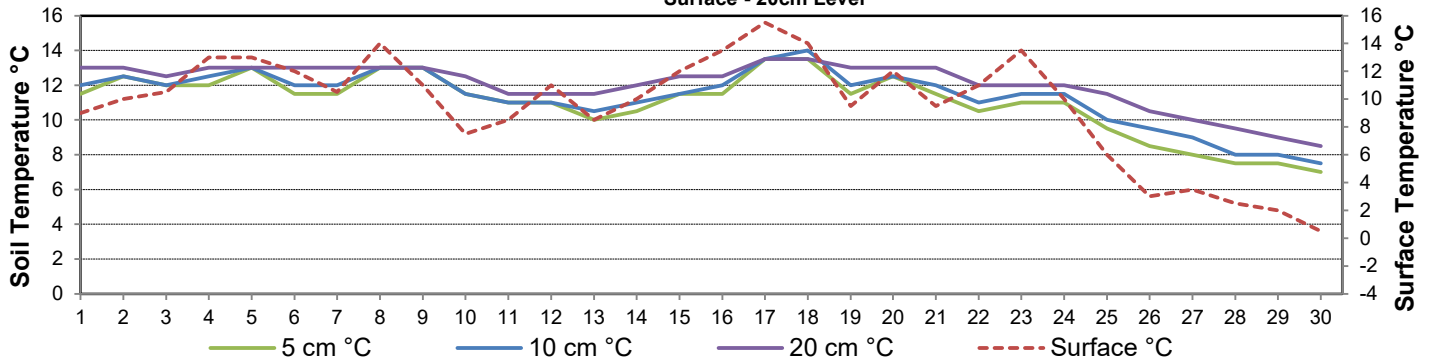


### Bright Sunshine, Global and Diffuse Radiation for September 2019



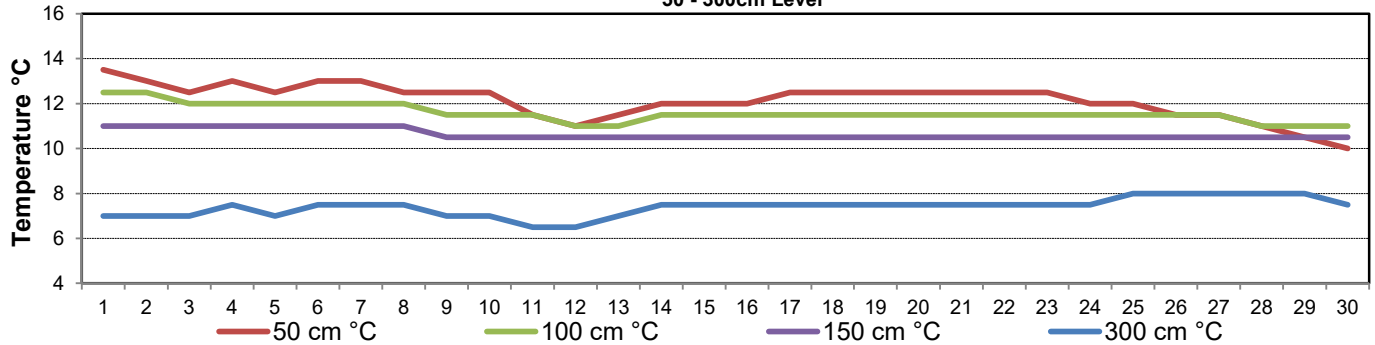
### Soil Temperatures for September 2019

Surface - 20cm Level



### Soil Temperatures for September 2018

50 - 300cm Level





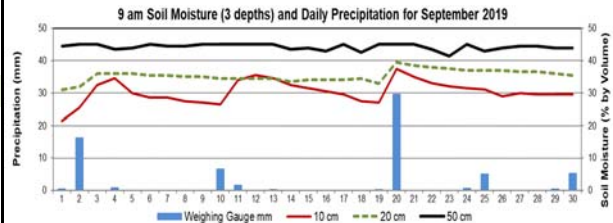
# SRC CLIMATE REFERENCE STATION DAILY DATA REPORT

## CONSERVATION LEARNING CENTRE

Saskatchewan 53.03°N 105.77°W Estab. 2011

September 2019

Day	2 meter Wind Speed			Soil Moisture at 0900 hrs (rounded to the 0.5%)		
	Daily Average	Max ½ hr Avg	½ hr Extreme Max	10 cm	20 cm	50 cm
	km/h	km/h	km/h	% by volume (soil type is Clay Loam)		
1	5.0	9.3	14.5	21.5	31.0	44.5
2	7.0	10.7	20.0	25.5	32.0	45.0
3	7.0	15.0	22.0	32.5	36.0	45.0
4	9.0	17.9	25.8	34.5	36.0	43.5
5	8.0	17.1	26.0	30.0	36.0	44.0
6	6.0	12.3	19.3	28.5	35.5	45.0
7	6.0	12.7	19.5	28.5	35.5	44.5
8	12.0	16.9	23.7	27.5	35.0	44.5
9	16.0	20.4	30.4	27.0	35.0	45.0
10	13.0	16.8	26.0	26.5	34.5	45.0
11	11.0	12.9	20.6	34.0	34.5	45.0
12	3.0	6.5	10.4	35.5	34.5	45.0
13	5.0	10.4	18.5	34.5	34.5	45.0
14	4.0	10.0	15.8	32.5	33.5	43.5
15	3.0	8.7	16.2	31.5	34.0	44.0
16	4.0	11.7	20.2	30.5	34.0	43.0
17	8.0	16.5	22.7	29.5	34.0	45.0
18	9.0	15.2	22.4	27.5	34.5	42.5
19	8.0	15.2	23.3	27.0	33.0	45.0
20	8.0	12.7	22.0	37.5	39.5	45.0
21	9.0	14.0	21.4	35.0	38.5	45.0
22	7.0	10.4	16.2	33.0	38.0	43.5
23	11.0	21.0	32.3	32.0	37.5	41.5
24	11.0	17.6	29.1	31.5	37.0	45.0
25	9.0	14.0	37.5	31.0	37.0	43.0
26	4.0	8.6	13.5	29.0	37.0	44.0
27	9.0	16.6	24.7	30.0	36.5	44.5
28	7.0	10.8	15.1	29.5	36.5	44.5
29	13.0	19.7	29.5	29.5	36.0	44.0
30	11.0	16.9	27.2	29.5	35.5	44.0
31						
Total						
Mean				30	35	44.3
Extreme	16.0	21.0	37.5	37.5	39.5	45
Date	13	12	11.5	13	13	12.5



**SRC proudly recognizes the following CRS supporters:**

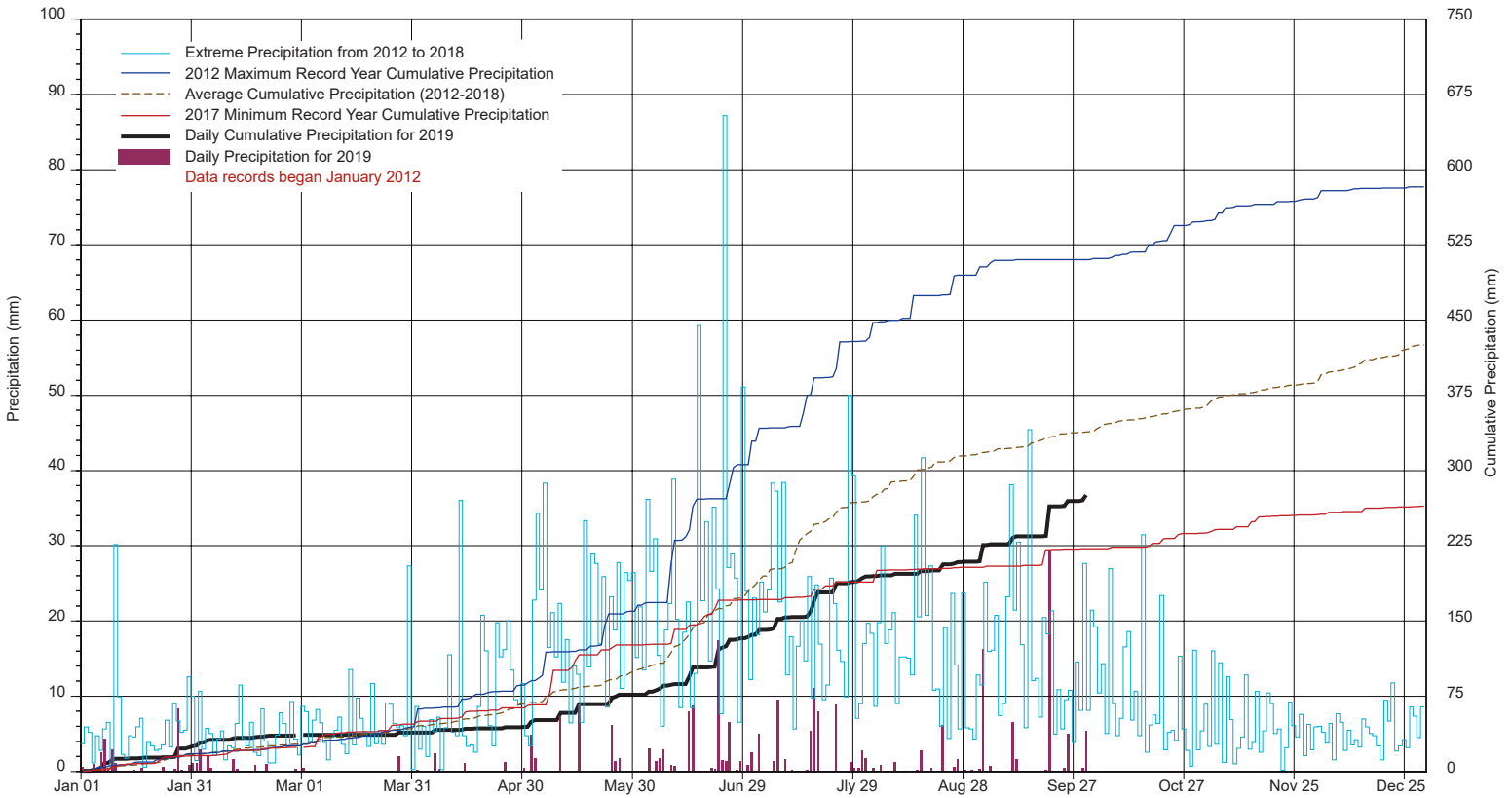


Agriculture and  
Agri-Food Canada

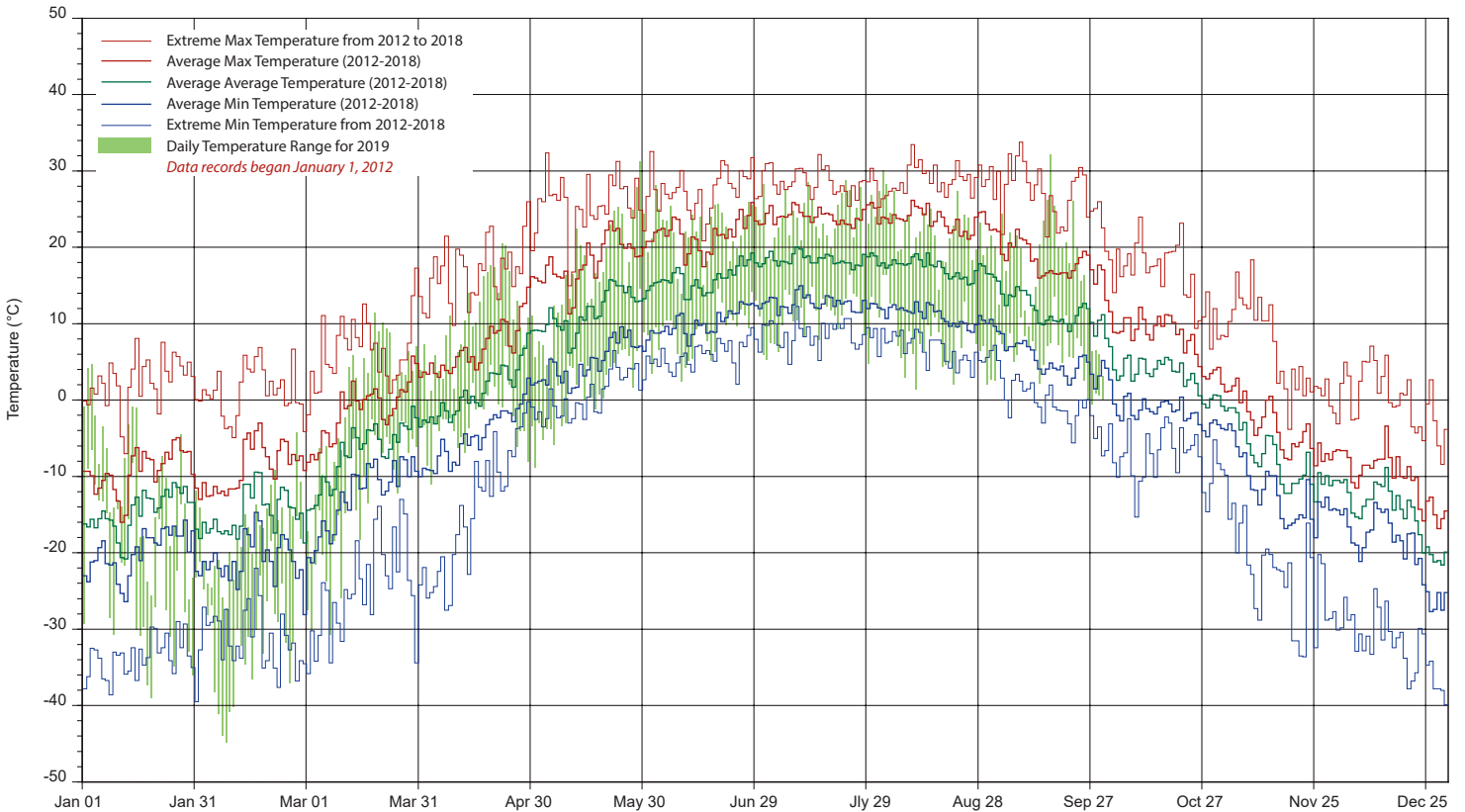
Agriculture et  
Agroalimentaire Canada



# SRC's CLIMATE REFERENCE STATION at the Conservation Learning Centre 2019 PRECIPITATION AND AVERAGE



## 2019 TEMPERATURES AND AVERAGES



SRC proudly recognizes the following CRS supporters:

