



# SRC CLIMATE REFERENCE STATION DAILY DATA REPORT

## CONSERVATION LEARNING CENTRE

Saskatchewan 53.03°N 105.77°W Estab. 2011

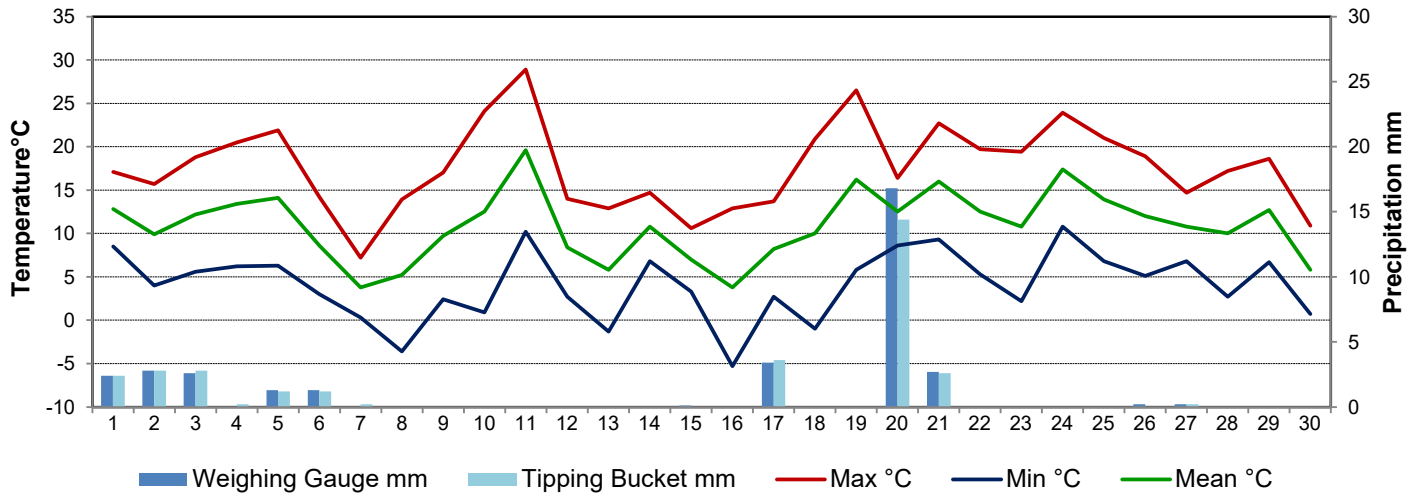
Preliminary **September 2020**

Day	Temperature			Degree-days			Precipitation			Relative Humidity		Station Pressure <i>corrected to sea level</i>	
	Max	Min	Mean	Growing	Heating	Cooling	Weighing Gauge	Tipping Bucket	Snow-on-Ground 0900h	Max ½ hr Avg	Min ½ hr Avg	Max ½ hr Avg	Min ½ hr Avg
	°C	°C	°C	5°C base	18°C base	18°C base	mm	mm	cm	%	%	mbar	mbar
1	17.1	8.5	12.8	7.8	5.2	0.0	2.4	2.4	-	96	56	1002	991
2	15.7	4.0	9.9	4.9	8.1	0.0	2.8	2.8	-	100	70	1009	998
3	18.8	5.6	12.2	7.2	5.8	0.0	2.6	2.8	-	98	52	1012	1009
4	20.5	6.2	13.4	8.4	4.6	0.0	0.0	0.2	-	100	46	1017	1013
5	21.9	6.3	14.1	9.1	3.9	0.0	1.3	1.2	-	100	56	1016	1009
6	14.2	3.0	8.6	3.6	9.4	0.0	1.3	1.2	-	100	71	1021	1010
7	7.2	0.3	3.8	0.0	14.2	0.0	0.0	0.2	-	97	58	1031	1021
8	13.9	-3.6	5.2	0.2	12.8	0.0	0.0	0.0	-	99	41	1030	1017
9	17.0	2.4	9.7	4.7	8.3	0.0	0.0	0.0	-	100	56	1019	1016
10	24.1	0.9	12.5	7.5	5.5	0.0	0.0	0.0	-	100	32	1022	1014
11	28.9	10.2	19.6	14.6	0.0	1.6	0.0	0.0	-	94	29	1014	1006
12	14.0	2.7	8.4	3.4	9.6	0.0	0.0	0.0	-	95	54	1018	1011
13	12.9	-1.3	5.8	0.8	12.2	0.0	0.0	0.0	-	100	53	1023	1018
14	14.7	6.8	10.8	5.8	7.2	0.0	0.0	0.0	-	91	58	1020	1015
15	10.6	3.3	7.0	2.0	11.0	0.0	0.1	0.0	-	94	78	1023	1017
16	12.9	-5.3	3.8	0.0	14.2	0.0	0.0	0.0	-	99	38	1026	1020
17	13.7	2.7	8.2	3.2	9.8	0.0	3.4	3.6	-	98	55	1024	1020
18	20.9	-1.0	10.0	5.0	8.0	0.0	0.0	0.0	-	100	31	1023	1012
19	26.5	5.8	16.2	11.2	1.8	0.0	0.0	0.0	-	88	30	1012	1006
20	16.4	8.6	12.5	7.5	5.5	0.0	16.8	14.4	-	99	67	1005	999
21	22.7	9.3	16.0	11.0	2.0	0.0	2.7	2.6	-	97	41	1011	1002
22	19.7	5.3	12.5	7.5	5.5	0.0	0.0	0.0	-	100	44	1018	1009
23	19.4	2.2	10.8	5.8	7.2	0.0	0.0	0.0	-	100	48	1018	1008
24	23.9	10.8	17.4	12.4	0.6	0.0	0.0	0.0	-	80	32	1007	992
25	21.0	6.8	13.9	8.9	4.1	0.0	0.0	0.0	-	77	30	999	994
26	18.9	5.1	12.0	7.0	6.0	0.0	0.2	0.0	-	94	40	1003	993
27	14.7	6.8	10.8	5.8	7.2	0.0	0.2	0.2	-	97	59	1020	1003
28	17.2	2.7	10.0	5.0	8.0	0.0	0.0	0.0	-	100	47	1020	1008
29	18.6	6.7	12.7	7.7	5.3	0.0	0.0	0.0	-	84	25	1014	1008
30	10.9	0.7	5.8	0.8	12.2	0.0	0.0	0.0	-	95	58	1028	1014
Total				178.8	215.2	1.6	33.8	31.6					
Avg	17.6	4.1	10.9				333.1	Cumulative ppt					
Extreme	28.9	-5.3					16.8	14.4	0	100	25	1031	991
Date	11	16					20	20		2	29	7	1

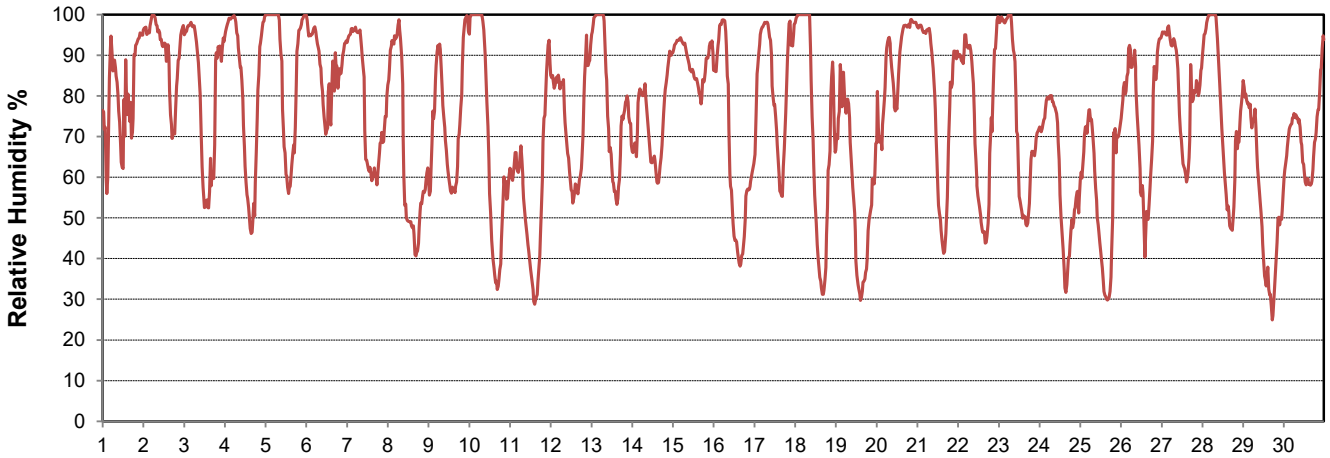
**SRC proudly recognizes the following CRS supporters:**



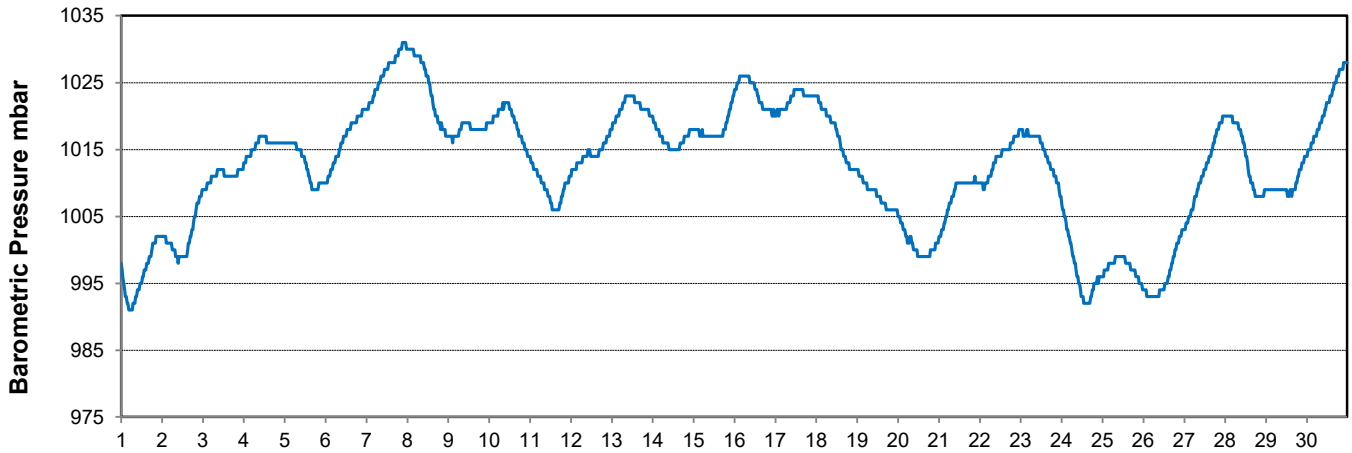
### Temperature and Precipitation for September 2020



### Relative Humidity for September 2020



### Barometric Pressure Corrected to Sea Level for September 2020





# SRC CLIMATE REFERENCE STATION DAILY DATA REPORT

## CONSERVATION LEARNING CENTRE

Saskatchewan 53.03°N 105.77°W Estab. 2011

Preliminary

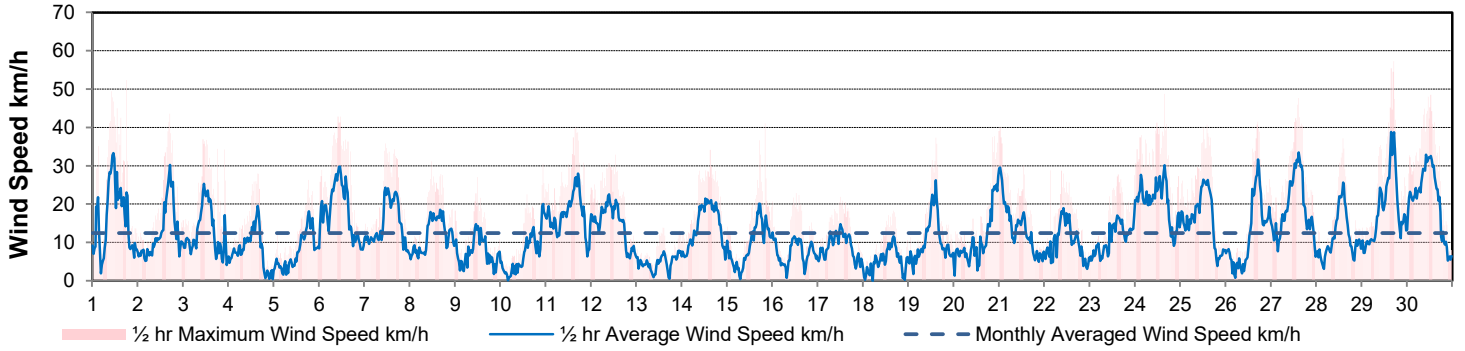
**September 2020**

Day	Wind Gust (10 meter)			Wind Speed (10 meters)	Soil Temperatures at 0900hrs								Radiation					
	Max	Direction	Time		Daily Average	Surface	5 cm	10 cm	20 cm	50 cm	100 cm	150 cm	300 cm	Bright Sunshine	Possible	% Possible	Global	Diffuse
	km/h					km/h	°C	°C	°C	°C	°C	°C	°C	°C	hours	hours		MJ/m <sup>2</sup>
1	52.3	NW	18:16	16.3	12.0	12.0	12.5	13.0	13.5	13.0	11.5	7.0	4.9	13.6	36.0	10.9	5.9	
2	43.6	WSW	17:03	12.5	9.5	11.0	11.5	12.5	13.5	12.5	11.5	7.0	4.1	13.5	30.3	7.0	4.1	
3	36.9	NW	10:58	12.9	9.5	10.0	11.0	12.0	13.0	12.5	11.0	7.0	9.9	13.5	73.5	16.5	3.6	
4	28.0	NW	15:47	8.0	10.5	10.5	11.5	12.5	12.5	12.5	11.0	7.0	9.9	13.4	73.9	17.7	3.5	
5	26.3	ENE	18:57	7.8	11.5	11.5	12.0	12.5	12.5	12.5	11.0	7.0	3.0	13.3	22.5	9.4	7.1	
6	42.8	NW	11:30	18.1	10.5	12.5	12.5	13.0	12.5	12.0	11.0	7.0	6.9	13.3	52.0	11.5	6.2	
7	35.8	N	11:14	14.8	2.5	9.0	10.0	12.0	12.5	12.0	11.0	7.0	1.7	13.2	12.9	8.1	6.8	
8	31.1	SSW	11:30	11.7	2.5	7.5	8.5	10.5	12.0	12.0	11.0	7.5	6.5	13.1	49.5	12.8	8.4	
9	27.0	NW	12:11	7.6	10.0	8.5	9.5	10.5	11.5	12.0	11.0	7.5	6.4	13.1	49.0	12.5	5.0	
10	30.5	S	22:40	7.1	9.0	8.5	9.5	11.0	11.5	11.5	11.0	7.5	10.6	13.0	81.6	15.9	3.9	
11	40.2	NW	16:25	17.4	15.5	11.0	11.5	11.5	11.5	11.5	11.0	7.5	12.4	12.9	95.9	17.6	2.2	
12	32.9	NW	13:23	15.0	9.5	11.0	11.5	12.0	12.0	11.5	11.0	7.5	6.5	12.9	50.5	12.4	6.4	
13	13.8	S	14:06	4.6	4.0	8.0	9.0	11.0	11.5	11.5	10.5	7.5	6.2	12.8	48.5	9.9	6.3	
14	34.2	NE	15:08	14.3	9.0	10.0	10.5	11.0	11.5	11.5	10.5	7.5	4.8	12.7	37.7	10.8	7.7	
15	41.1	NW	20:26	9.6	8.5	10.5	10.5	11.0	11.5	11.0	10.5	7.5	0.0	12.7	0.0	3.1	2.8	
16	22.9	WSW	12:46	7.5	1.0	7.0	8.0	10.0	11.0	11.0	10.5	7.5	9.5	12.6	75.5	16.7	4.6	
17	21.9	ENE	12:19	8.9	6.5	9.0	9.5	10.0	10.0	11.0	10.5	7.5	7.3	12.5	58.4	13.4	4.0	
18	18.3	S	16:25	5.1	3.5	7.5	8.5	10.0	11.0	11.0	10.5	7.5	10.1	12.5	81.1	14.7	3.6	
19	37.3	SSW	14:41	10.2	11.5	8.5	9.0	10.0	10.0	11.0	10.5	7.5	9.0	12.4	72.7	11.0	6.4	
20	39.1	NW	23:47	10.8	11.5	10.0	10.5	10.5	9.5	10.5	10.5	7.5	0.6	12.3	4.9	3.8	3.3	
21	40.1	WNW	0:51	13.7	12.0	11.0	11.0	11.0	10.5	10.5	10.0	7.5	10.3	12.2	84.2	14.7	2.6	
22	28.8	NW	3:02	10.1	12.0	11.0	11.0	11.5	10.5	10.5	10.0	7.5	10.3	12.2	84.6	14.3	2.6	
23	27.7	SSE	15:00	11.2	7.0	8.5	9.5	11.0	10.0	10.5	10.0	7.5	11.2	12.1	92.6	13.1	3.1	
24	48.7	WSW	15:58	20.6	11.5	10.5	10.5	11.0	11.0	10.5	10.0	7.5	4.5	12.0	37.4	8.1	5.0	
25	40.7	W	14:11	16.2	12.0	10.0	10.5	11.0	11.0	10.5	10.0	7.5	11.4	12.0	95.3	14.6	1.6	
26	41.4	NW	17:27	12.1	8.5	9.0	9.5	10.5	11.0	10.5	10.0	7.5	2.2	11.9	18.5	7.1	5.7	
27	47.7	NW	14:40	18.6	8.5	9.5	10.0	10.5	10.5	10.5	10.0	7.5	6.5	11.8	54.9	11.2	4.9	
28	37.2	SW	14:17	11.7	6.5	9.0	9.5	10.5	10.5	10.5	10.0	7.5	0.1	11.8	0.9	4.7	4.3	
29	57.2	NNW	17:19	18.7	10.0	8.5	9.0	10.0	10.5	10.5	10.0	7.5	10.5	11.7	89.8	12.8	3.3	
30	48.5	N	12:48	20.8	7.5	8.5	9.0	9.5	10.5	10.5	10.0	7.5	2.7	11.6	23.2	7.5	4.9	
Total													200.0	378.5	52.8	343.8	139.8	
Mean				12.5	8.8	9.6	10.2	11.1	11.4	11.3	10.6	7.4						
Extreme	57.2	NNW	17:19															
Date	29																	

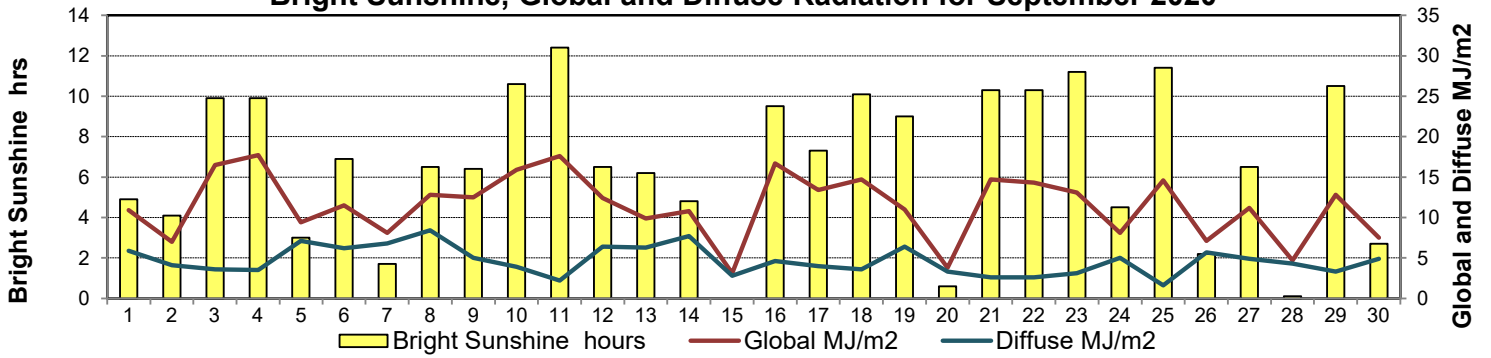
### GLOSSARY OF TERMS

<b>Degree-days</b>	<b>Radiation</b>
T <sub>m</sub> Mean Temperature	Bright Sunshine is the unobstructed direct radiation from the sun, as opposed to the shading of a location by clouds or by other atmospheric obstructions.
Growing (T <sub>m</sub> -5°C); if T <sub>m</sub> ≤ 5°C then GDD = 0	Diffuse is radiation reaching the earth's surface after having been scattered from the direct solar beam
Heating (18°C-T <sub>m</sub> ); if T <sub>m</sub> ≥ 18°C then HDD = 0	Global is the sum of the direct solar and diffuse radiation
Cooling (T <sub>m</sub> -18°C); if T <sub>m</sub> ≤ 18°C then CDD = 0	<b>Relative Humidity</b> The ratio of the air's water vapour content to its water vapour capacity which changes with temperature.
T Trace of Precipitation	<b>Air Pressure</b> The force exerted by the weight of a column of air above a given point
<b>SOG</b> Depth of snow-on-the-ground	<b>Wind Gust</b> The daily highest instantaneous value recorded irrespective of direction and/or duration
<b>Red Cell</b> no data available	
<b>Red Number</b> manual calculation	

### Wind Speed for September 2020

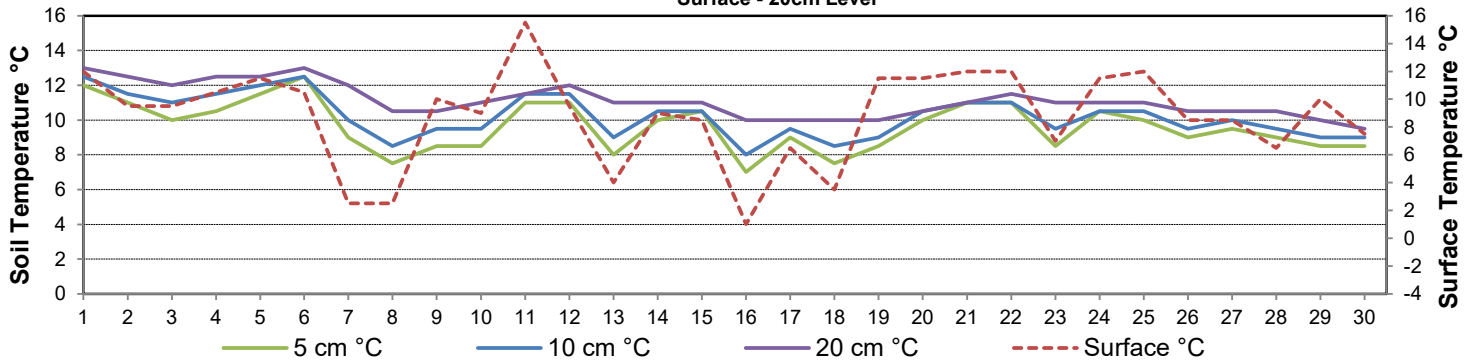


### Bright Sunshine, Global and Diffuse Radiation for September 2020



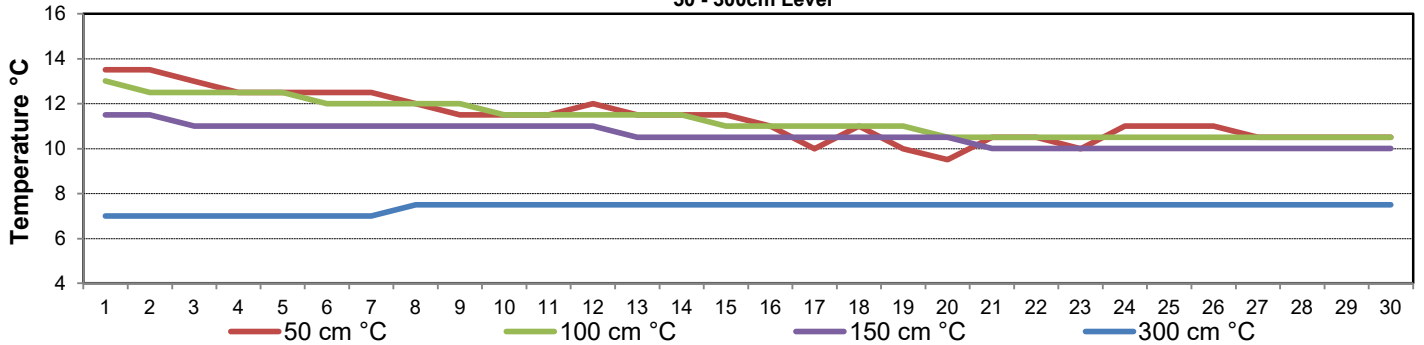
### Soil Temperatures for September 2020

Surface - 20cm Level



### Soil Temperatures for September 2020

50 - 300cm Level





# SRC CLIMATE REFERENCE STATION DAILY DATA REPORT

## CONSERVATION LEARNING CENTRE

Saskatchewan 53.03°N 105.77°W Estab. 2011

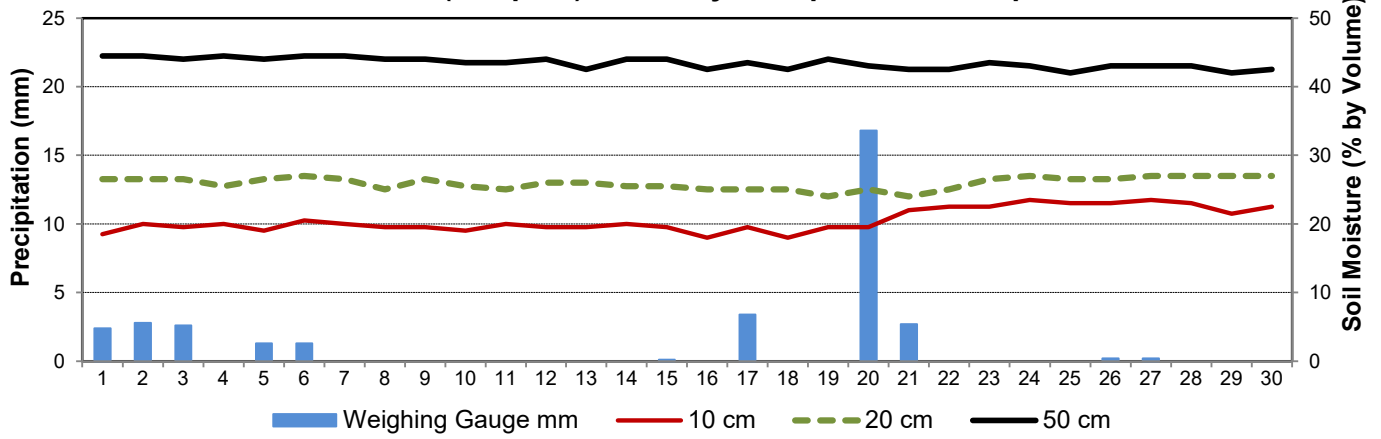
**September 2020**

Day	2 meter Wind Speed			Soil Moisture at 0900 hrs (rounded to the 0.5%)			Comments
	Daily Average	Max ½ hr Avg	½ hr Extreme Max	10 cm	20 cm	50 cm	
	km/h	km/h	km/h	% by volume (soil type is Clay Loam)			
1	11.0	22.0	35.0	18.5	26.5	44.5	First Fall Frost Sept 8 @ 02:00
2	8.0	19.9	28.5	20.0	26.5	44.5	
3	9.0	16.7	25.4	19.5	26.5	44.0	
4	6.0	13.4	22.9	20.0	25.5	44.5	
5	5.0	12.0	19.5	19.0	26.5	44.0	
6	12.0	19.6	27.7	20.5	27.0	44.5	
7	10.0	17.4	26.2	20.0	26.5	44.5	
8	8.0	13.4	21.8	19.5	25.0	44.0	
9	5.0	10.9	19.1	19.5	26.5	44.0	
10	5.0	13.1	19.5	19.0	25.5	43.5	
11	12.0	18.2	27.3	20.0	25.0	43.5	
12	10.0	15.2	24.8	19.5	26.0	44.0	
13	3.0	6.4	12.4	19.5	26.0	42.5	
14	10.0	16.0	23.3	20.0	25.5	44.0	
15	7.0	13.1	28.7	19.5	25.5	44.0	
16	5.0	9.4	18.9	18.0	25.0	42.5	
17	7.0	12.5	18.9	19.5	25.0	43.5	
18	3.0	8.6	14.9	18.0	25.0	42.5	
19	6.0	18.0	27.5	19.5	24.0	44.0	
20	7.0	17.6	28.3	19.5	25.0	43.0	
21	9.0	18.8	26.6	22.0	24.0	42.5	
22	6.0	13.9	20.0	22.5	25.0	42.5	
23	7.0	11.8	21.2	22.5	26.5	43.5	
24	14.0	21.1	32.5	23.5	27.0	43.0	
25	11.0	18.4	31.4	23.0	26.5	42.0	
26	8.0	20.1	31.2	23.0	26.5	43.0	
27	13.0	21.8	30.0	23.5	27.0	43.0	
28	8.0	18.6	25.6	23.0	27.0	43.0	
29	12.0	24.9	39.2	21.5	27.0	42.0	
30	14.0	23.2	35.2	22.5	27.0	42.5	
31							
Total							
Mean				21	26	43.4	
Extreme	14.0	24.9	39.2	23.5	27	44.5	
Date	11	10	10	11	13	13	

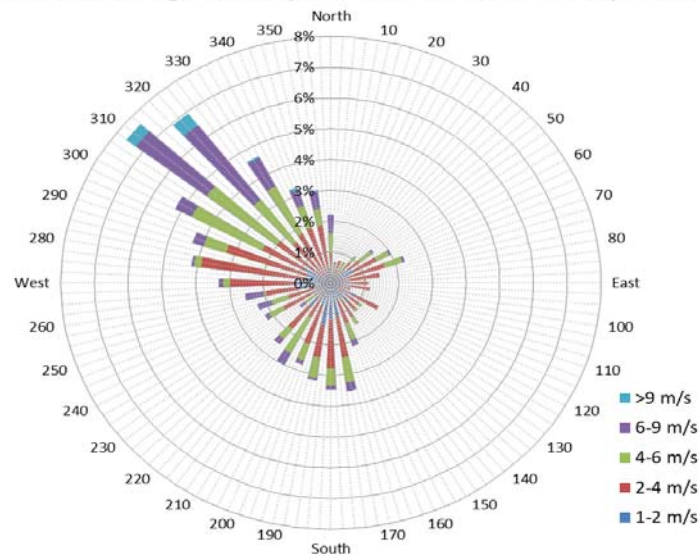
**SRC proudly recognizes the following CRS supporters:**



### 9 am Soil Moisture (3 depths) and Daily Precipitation for September 2020



### 10 minute Average Wind Speed and Direction CLC Sept 2020



### 1/2 hr Maximum Wind Speed and Direction CLC Sept 2020

