



# SRC CLIMATE REFERENCE STATION DAILY DATA REPORT

## CONSERVATION LEARNING CENTRE

Saskatchewan 53.03°N 105.77°W 451m asl Estab. 2011

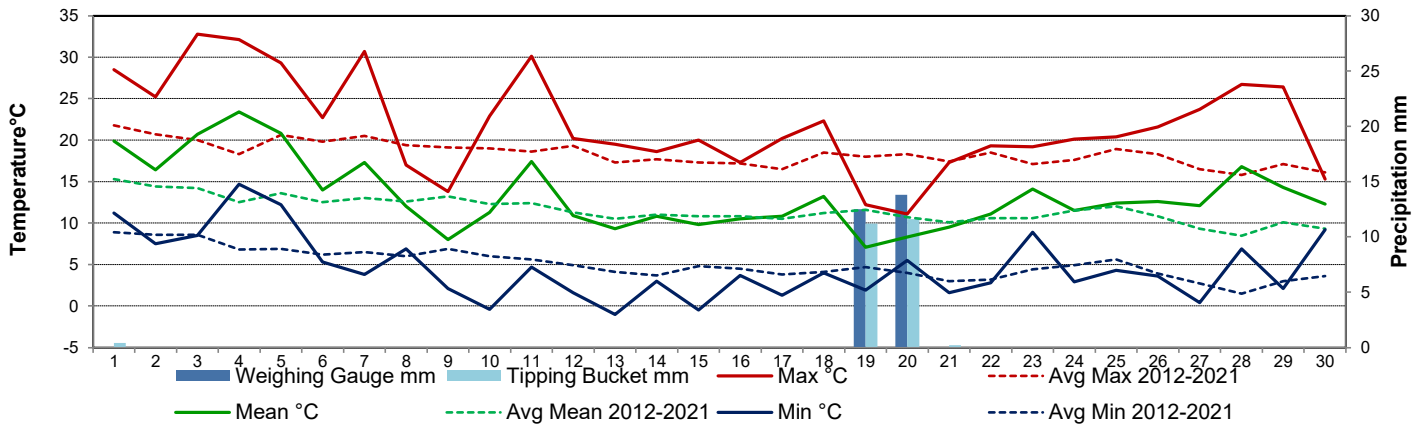
Preliminary **September 2022**

Day	Temperature						Degree-days			Precipitation			Relative Humidity		Station Pressure <i>corrected to sea level</i>	
	Max	Avg Max	Min	Avg Min	Mean	Avg Mean	Growing	Heating	Cooling	Weighing Gauge	Tipping Bucket	Snow-on-Ground 0900h	Max ½ hr Avg	Min ½ hr Avg	Max ½ hr Avg	Min ½ hr Avg
	°C	2012-2021	°C	2012-2021	°C	2012-2021	5°C base	18°C base	18°C base	mm	mm	cm	%	%	mbar	mbar
1	28.5	21.8	11.2	8.9	19.9	15.3	14.9	0.0	1.9	0.0	0.4	0	81	32	1011	1001
2	25.2	20.7	7.5	8.6	16.4	14.4	11.4	1.6	0.0	0.0	0.0	0	94	30	1018	1012
3	32.8	20.0	8.5	8.6	20.7	14.2	15.7	0.0	2.7	0.0	0.0	0	84	26	1017	1011
4	32.1	18.3	14.7	6.8	23.4	12.5	18.4	0.0	5.4	0.0	0.0	0	73	33	1011	1004
5	29.3	20.6	12.2	6.9	20.8	13.6	15.8	0.0	2.8	0.0	0.0	0	94	41	1011	1001
6	22.7	19.8	5.3	6.2	14.0	12.5	9.0	4.0	0.0	0.0	0.0	0	91	30	1019	1012
7	30.7	20.5	3.8	6.5	17.3	13.0	12.3	0.7	0.0	0.0	0.0	0	96	32	1018	1000
8	17.0	19.4	6.9	6.0	12.0	12.6	7.0	6.0	0.0	0.0	0.0	0	91	46	1012	1005
9	13.8	19.1	2.1	6.9	8.0	13.2	3.0	10.0	0.0	0.0	0.0	-	97	56	1015	1013
10	22.9	19.0	-0.4	6.0	11.3	12.3	6.3	6.7	0.0	0.0	0.0	0	100	26	1016	1011
11	30.1	18.6	4.7	5.6	17.4	12.4	12.4	0.6	0.0	0.0	0.0	0	80	20	1013	1009
12	20.2	19.3	1.6	4.9	10.9	11.3	5.9	7.1	0.0	0.0	0.0	-	98	33	1018	1010
13	19.5	17.3	-1.0	4.1	9.3	10.5	4.3	8.7	0.0	0.0	0.0	-	100	39	1018	1015
14	18.6	17.7	3.0	3.7	10.8	11.0	5.8	7.2	0.0	0.0	0.0	-	97	41	1016	1014
15	20.0	17.3	-0.5	4.8	9.8	10.8	4.8	8.2	0.0	0.0	0.0	-	100	52	1019	1017
16	17.3	17.2	3.7	4.5	10.5	10.8	5.5	7.5	0.0	0.0	0.0	-	100	63	1017	1010
17	20.2	16.5	1.3	3.8	10.8	10.5	5.8	7.2	0.0	0.0	0.0	-	100	52	1010	1006
18	22.3	18.5	4.0	4.1	13.2	11.2	8.2	4.8	0.0	0.0	0.0	-	98	32	1009	1007
19	12.2	18.0	1.9	4.7	7.1	11.6	2.1	10.9	0.0	12.5	11.2	-	100	92	1009	1004
20	11.1	18.3	5.5	4.0	8.3	10.7	3.3	9.7	0.0	13.8	11.6	-	100	85	1019	1009
21	17.3	17.4	1.6	3.0	9.5	10.1	4.5	8.5	0.0	0.0	0.2	0	99	41	1025	1019
22	19.3	18.5	2.8	3.2	11.1	10.6	6.1	6.9	0.0	0.0	0.0	-	92	33	1021	1006
23	19.2	17.1	8.9	4.4	14.1	10.6	9.1	3.9	0.0	0.0	0.0	-	92	61	1006	1004
24	20.1	17.6	2.9	4.9	11.5	11.5	6.5	6.5	0.0	0.0	0.0	-	95	34	1017	1006
25	20.4	18.9	4.3	5.6	12.4	12.0	7.4	5.6	0.0	0.0	0.0	-	86	30	1021	1016
26	21.6	18.3	3.6	3.9	12.6	10.8	7.6	5.4	0.0	0.0	0.0	-	95	36	1020	1015
27	23.7	16.5	0.4	2.7	12.1	9.3	7.1	5.9	0.0	0.0	0.0	0	100	31	1020	1015
28	26.7	15.8	6.9	1.5	16.8	8.5	11.8	1.2	0.0	0.0	0.0	-	99	36	1015	1011
29	26.4	17.1	2.1	3.0	14.3	10.1	9.3	3.7	0.0	0.0	0.0	-	100	36	1018	1013
30	15.3	16.1	9.2	3.6	12.3	9.3	7.3	5.7	0.0	0.0	0.0	0	97	84	1025	1018
Total							248.6	154.2	12.8	26.3	23.4					
Avg	21.9	18.4	4.6	5.1	13.3	11.6	<i>Monthly 2012 - 2021 Average</i>			28.3	<i>2012-2021 Average</i>					
Extreme	32.8	33.8	-1.0	-7.3			202.6	196.3	3.5	271.6	<i>2022 Cumulative ppt</i>		100	20	1025	1000
Date	3	2011	13	2018						323.6	<i>Cumulative Average</i>		10	11	21	7

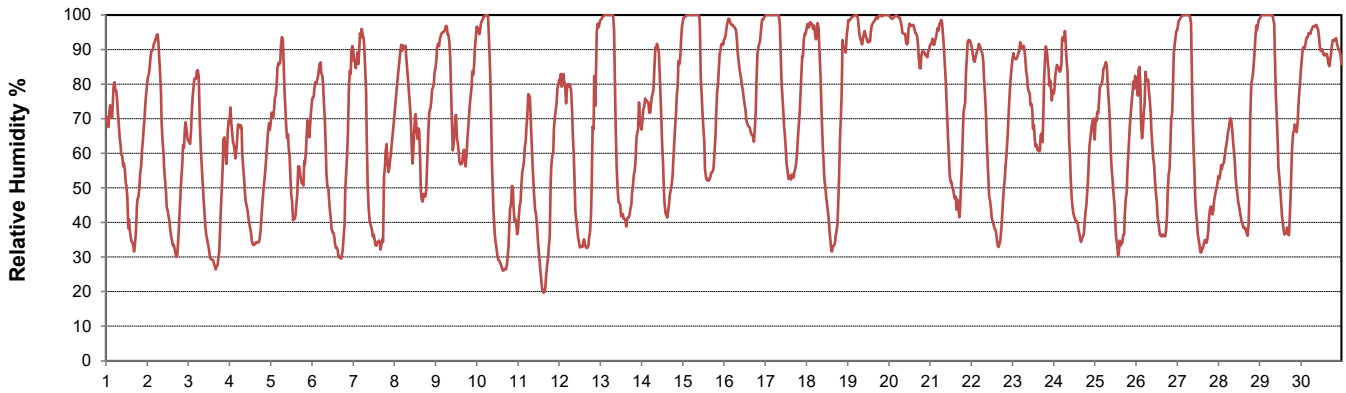
**SRC proudly recognizes the following CRS supporters:**



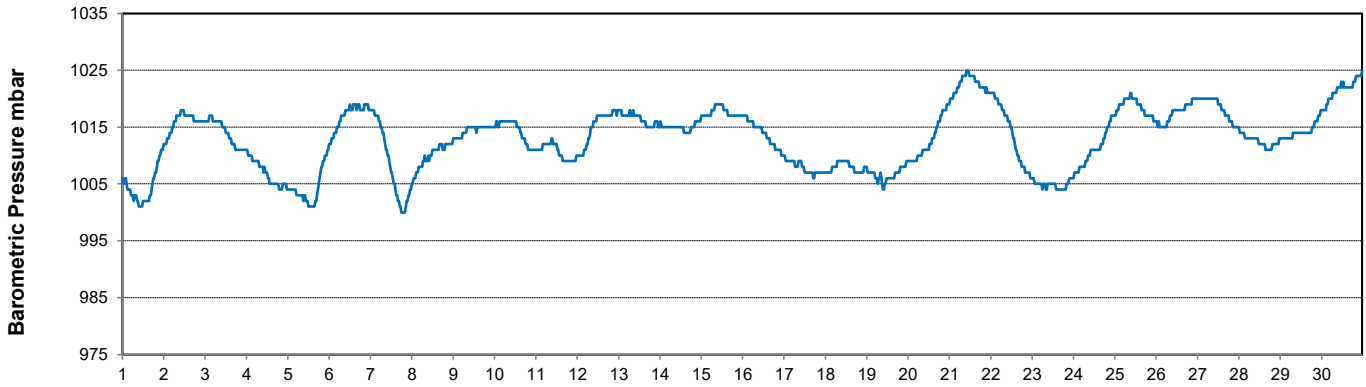
### Temperature and Precipitation for September 2022



### Relative Humidity for September 2022



### Barometric Pressure Corrected to Sea Level for September 2022





# SRC CLIMATE REFERENCE STATION DAILY DATA REPORT

## CONSERVATION LEARNING CENTRE

Saskatchewan 53.03°N 105.77°W 451m asl Estab. 2011

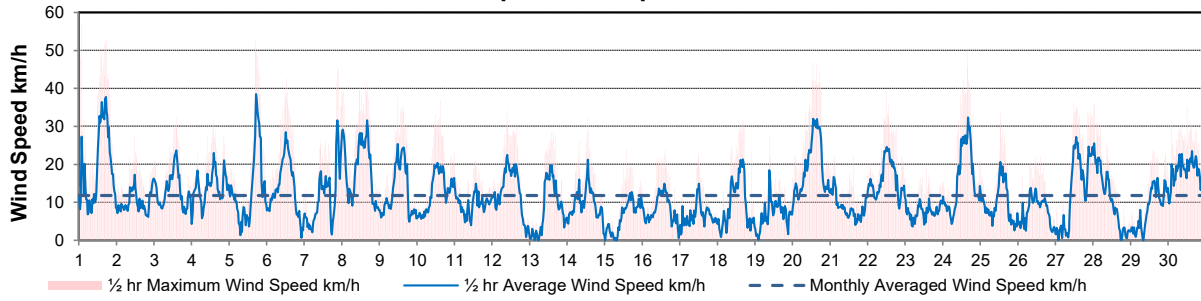
Preliminary **September 2022**

Day	Wind Gust (10 meter)			Wind Speed (10 meters)	Soil Temperatures at 0900hrs								Radiation				
	Max	Direction	Time	Daily Average	Surface	5 cm	10 cm	20 cm	50 cm	100 cm	150 cm	300 cm	Bright Sunshine	Possible	% Possible	Global	Diffuse
	km/h			km/h	°C	°C	°C	°C	°C	°C	°C	°C	hours	hours		MJ/m <sup>2</sup>	MJ/m <sup>2</sup>
1	56.7	N	1:31	19.1	21.0	16.5	17.5	16.5	15.5	13.5	12.0	7.5	12.6	13.6	92.4	18.8	4.9
2	27.8	NW	11:37	10.4	14.0	14.5	15.5	16.0	15.5	13.5	12.0	7.5	13.1	13.6	96.5	19.6	2.4
3	32.2	S	14:11	13.0	18.5	14.0	15.0	15.5	15.0	13.5	12.0	7.5	12.4	13.5	91.9	18.2	4.4
4	31.6	S	14:26	14.1	20.5	15.0	16.0	15.5	15.0	13.5	12.0	8.0	12.2	13.4	90.8	16.8	5.0
5	52.7	NW	16:58	13.6	18.0	16.0	16.5	16.0	15.0	13.5	12.0	8.0	9.7	13.4	72.6	14.1	6.7
6	42.6	NW	12:58	13.7	14.5	14.5	15.5	15.5	15.0	13.5	12.0	8.0	12.5	13.3	94.0	19.2	2.2
7	45.2	NNW	21:14	11.6	14.5	12.5	14.0	14.5	15.0	13.5	12.0	8.0	10.2	13.2	77.1	15.5	5.1
8	41.8	NW	16:04	18.6	12.5	14.0	15.0	15.0	14.5	13.5	12.0	8.0	9.0	13.2	68.4	12.6	4.7
9	37.7	NW	11:47	12.9	8.5	12.0	13.0	14.0	14.5	13.5	12.0	8.0	2.9	13.1	22.1	9.0	6.9
10	36.9	WSW	15:00	12.7	10.0	10.5	11.5	13.0	14.0	13.5	12.0	8.0	12.6	13.0	96.7	18.1	2.4
11	23.2	SW	0:06	9.5	11.0	11.0	12.0	13.0	13.5	13.0	12.0	8.0	11.9	13.0	91.8	16.4	4.0
12	34.1	NE	9:34	12.7	12.5	12.5	13.0	13.5	13.5	13.0	12.0	8.0	12.2	12.9	94.6	17.6	2.4
13	28.5	S	14:05	8.0	9.5	10.0	11.5	12.5	13.5	13.0	12.0	8.0	8.9	12.8	69.4	12.6	7.4
14	32.2	S	13:09	9.7	10.5	12.0	12.5	12.5	13.0	13.0	12.0	8.0	8.3	12.8	65.1	13.0	4.3
15	23.9	SSE	14:23	6.1	6.0	10.0	11.0	12.5	13.0	12.5	12.0	8.0	10.1	12.7	79.7	15.6	3.9
16	23.9	SE	14:47	8.1	12.5	12.0	12.0	12.5	13.0	12.5	11.5	8.0	0.0	12.6	0.0	6.0	5.6
17	23.1	E	12:05	6.7	8.0	10.0	11.0	12.0	12.5	12.5	11.5	8.0	8.9	12.6	70.9	13.3	6.3
18	31.7	WSW	16:30	9.6	11.5	11.0	11.5	12.0	12.5	12.5	11.5	8.0	11.1	12.5	88.9	15.7	2.7
19	27.6	ENE	9:16	6.9	9.0	10.5	11.0	12.0	12.5	12.5	11.5	8.5	0.0	12.4	0.0	2.4	2.2
20	46.9	NW	13:29	19.5	9.5	11.0	11.5	11.5	12.0	12.0	11.5	8.0	0.8	12.3	6.5	5.0	4.6
21	22.2	NW	2:40	8.8	6.5	9.0	10.0	11.0	12.0	12.0	11.5	8.5	10.6	12.3	86.4	13.9	2.3
22	39.0	SSW	12:27	16.2	7.5	8.5	9.0	10.5	11.5	12.0	11.5	8.5	11.3	12.2	92.6	15.6	1.8
23	18.9	SW	13:32	7.5	11.0	10.0	10.5	11.0	11.5	12.0	11.5	8.5	8.3	12.1	68.4	12.1	4.4
24	50.6	NW	16:21	15.9	8.5	9.5	10.0	11.0	11.5	11.5	11.5	8.5	11.0	12.1	91.1	14.8	1.9
25	33.4	WNW	12:57	9.6	8.0	9.0	9.5	11.0	11.5	11.5	11.0	8.5	10.2	12.0	85.0	13.2	4.7
26	22.3	NNW	11:22	7.7	11.5	10.0	10.5	11.0	11.5	11.5	11.0	8.5	11.4	11.9	95.6	14.3	1.5
27	36.3	S	11:53	13.5	7.0	8.5	9.5	10.5	11.5	11.5	11.0	8.5	9.5	11.9	80.1	13.0	3.0
28	35.9	SSE	1:02	10.8	11.5	10.5	10.5	11.0	11.5	11.5	11.0	8.5	11.2	11.8	95.0	13.5	1.7
29	23.6	E	14:17	8.5	8.5	9.5	10.0	11.0	11.5	11.5	11.0	8.5	10.6	11.7	90.4	12.6	3.5
30	35.1	ESE	12:10	18.1	9.5	11.5	11.5	11.5	11.5	11.0	11.0	8.5	0.0	11.7	0.0	3.4	3.2
Total													273.5	379.5	72.1	405.9	116.1
Mean				11.8	11.4	11.5	12.3	12.8	13.1	12.6	11.7	8.1					
Extreme	56.7	N	1:31														
Date	1																

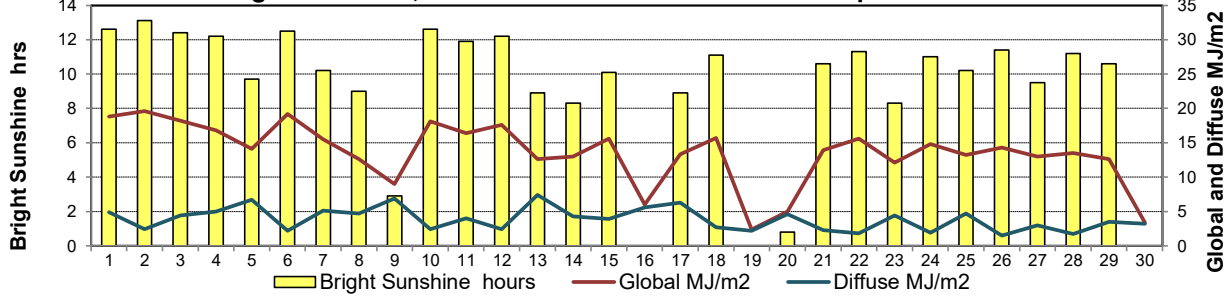
### GLOSSARY OF TERMS

<b>Degree-days</b>	<b>Radiation</b>
Tm Mean Temperature	Bright Sunshine is the unobstructed direct radiation from the sun, as opposed to the shading of a location by clouds or by other atmospheric obstructions.
Growing (Tm-5°C); if Tm ≤ 5°C then GDD = 0	
Heating (18°C-Tm); if Tm ≥ 18°C then HDD = 0	Diffuse is radiation reaching the earth's surface after having been scattered from the direct solar beam
Cooling (Tm-18°C); if Tm ≤ 18°C then CDD = 0	Global is the sum of the direct solar and diffuse radiation
T Trace of Precipitation	<b>Relative Humidity</b> The ratio of the air's water vapour content to its water vapour capacity which changes with temperature.
SOG Depth of snow-on-the-ground	
Red Cell no data available	<b>Air Pressure</b> The force exerted by the weight of a column of air above a given point
Red Number manual calculation	<b>Wind Gust</b> The daily highest instantaneous value recorded irrespective of direction and/or duration

**Wind Speed for September 2022**

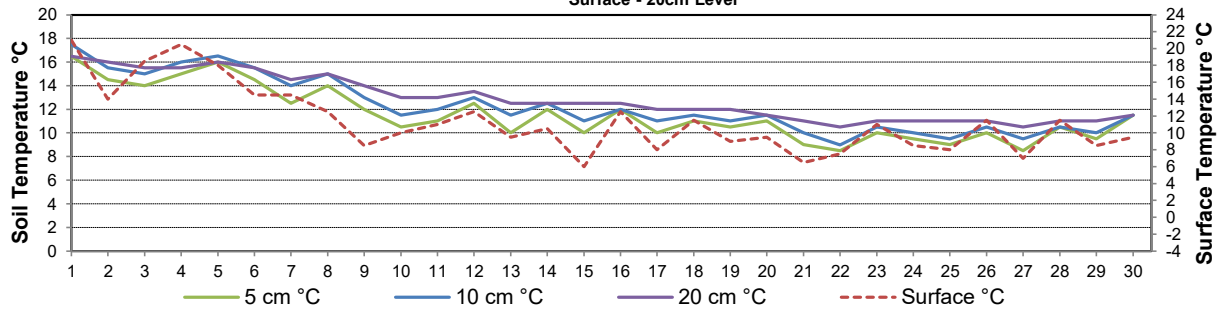


**Bright Sunshine, Global and Diffuse Radiation for September 2022**



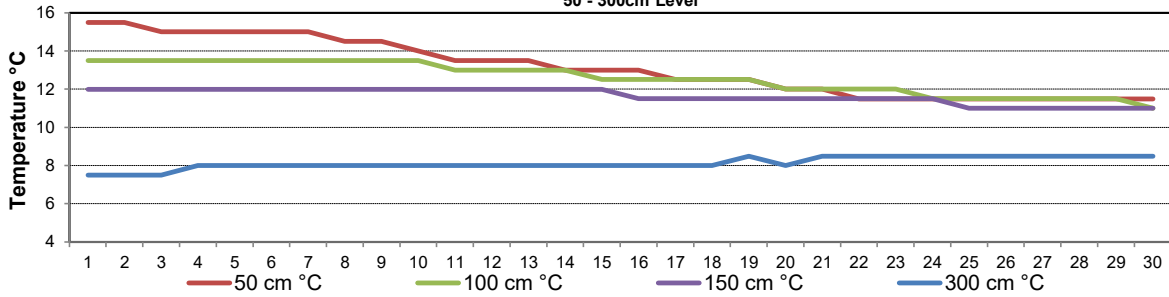
**Soil Temperatures for September 2022**

Surface - 20cm Level



**Soil Temperatures for September 2022**

50 - 300cm Level





SRC CLIMATE REFERENCE STATION DAILY DATA REPORT

CONSERVATION LEARNING CENTRE

Saskatchewan 53.03°N 105.77°W 451m asl Estab. 2011

September 2022

Day	2 meter Wind Speed			Soil Moisture at 0900 hrs (rounded to the 0.5%)			Comments
	Daily Average	Max ½ hr Avg	½ hr Extreme Max	10 cm	20 cm	50 cm	
	km/h	km/h	km/h	% by volume (soil type is Clay Loam)			
1	11.0	22.4	41.4	22.0	25.5	38.5	
2	5.0	9.1	17.6	22.0	24.5	38.5	
3	6.0	14.5	22.5	20.5	24.5	39.5	
4	7.0	14.1	20.4	20.5	25.0	37.0	
5	7.0	22.8	32.9	20.0	24.5	37.5	
6	8.0	17.3	28.3	20.5	24.5	37.0	
7	6.0	19.0	30.8	20.0	24.0	37.0	
8	12.0	18.8	26.6	19.5	23.0	36.5	
9	8.0	15.8	26.4	20.5	23.5	37.5	
10	8.0	13.7	22.9	19.0	24.0	36.0	
11	3.0	9.4	15.6	19.5	23.5	37.0	
12	7.0	14.7	23.3	20.5	23.5	36.0	
13	4.0	12.7	18.9	20.0	23.5	35.0	
14	5.0	12.7	19.9	20.0	23.5	36.0	
15	3.0	6.9	17.2	19.5	23.5	35.5	
16	4.0	8.3	17.6	19.5	23.5	36.0	
17	2.0	10.4	16.4	18.5	23.0	35.5	
18	5.0	14.3	22.5	18.5	23.0	34.5	
19	3.0	12.6	22.0	19.5	23.0	35.5	
20	12.0	19.6	29.1	20.5	23.5	36.0	
21	5.0	10.3	17.4	25.5	21.5	35.0	
22	10.0	15.4	24.5	25.5	23.5	34.0	
23	2.0	7.5	13.3	25.5	22.0	34.5	
24	10.0	20.0	32.5	24.5	23.5	34.5	
25	5.0	12.9	20.6	25.0	23.0	34.0	
26	3.0	9.5	16.8	25.0	24.0	35.0	
27	7.0	17.2	25.0	25.0	22.5	34.0	
28	5.0	15.0	22.4	24.0	22.5	34.0	
29	3.0	11.0	18.1	23.5	24.0	34.0	
30	13.0	17.0	25.2	25.0	24.5	35.0	
31							
Total							
Mean				22	24	35.9	
Extreme	13.0	22.8	41.4	25.5	25.5	39.5	
Date	11.5	16	16.5	11	16.5	15.5	

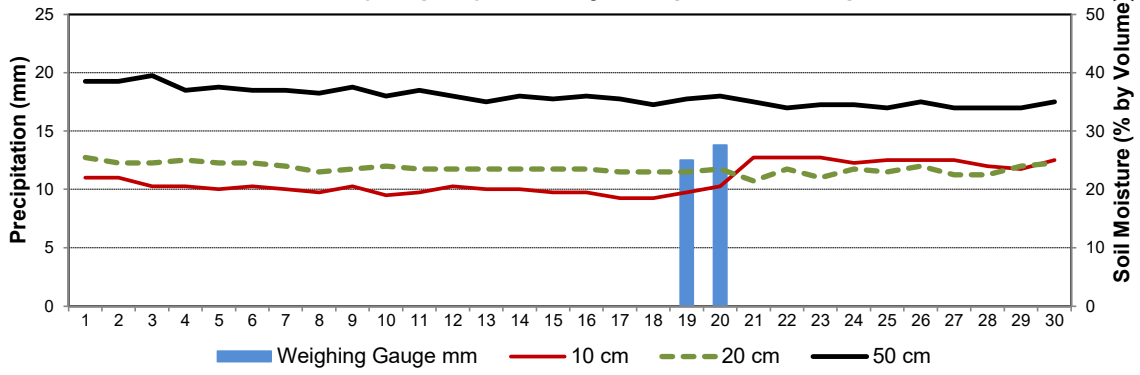
SRC proudly recognizes the following CRS supporters:



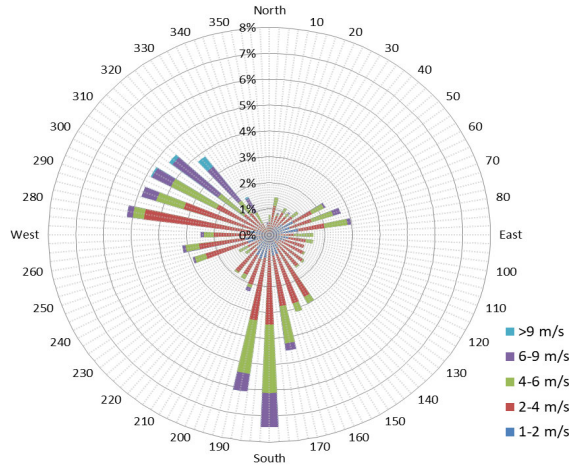
Agriculture and Agri-Food Canada / Agriculture et Agroalimentaire Canada



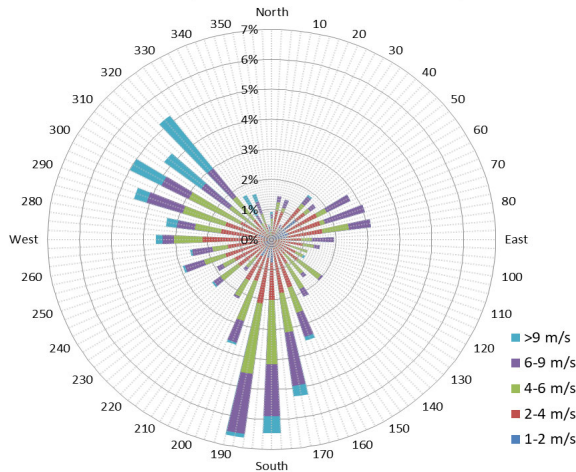
### 9 am Soil Moisture (3 depths) and Daily Precipitation for September 2022



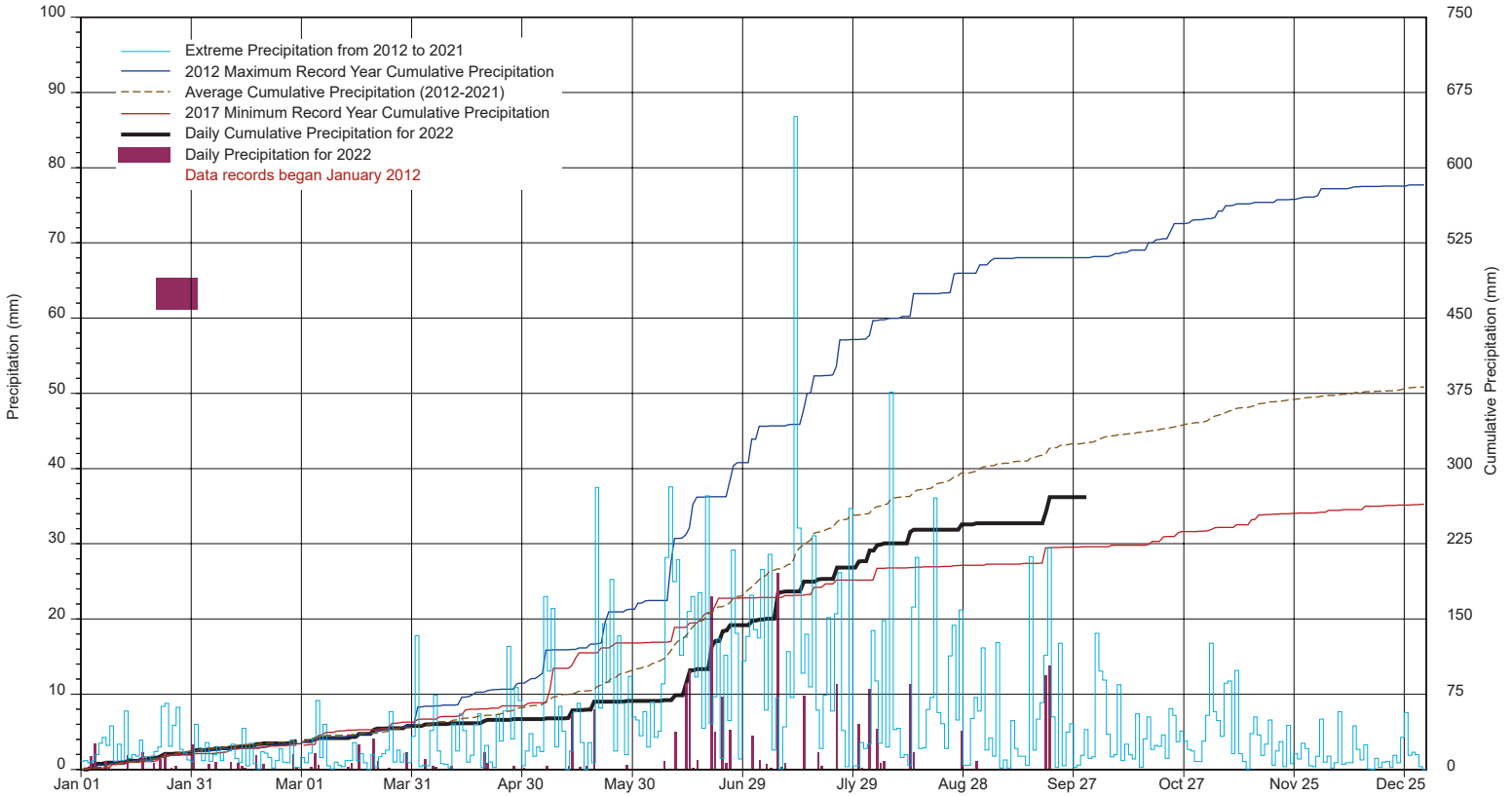
### 10 minute Average Wind Speed and Direction CLC September 2022



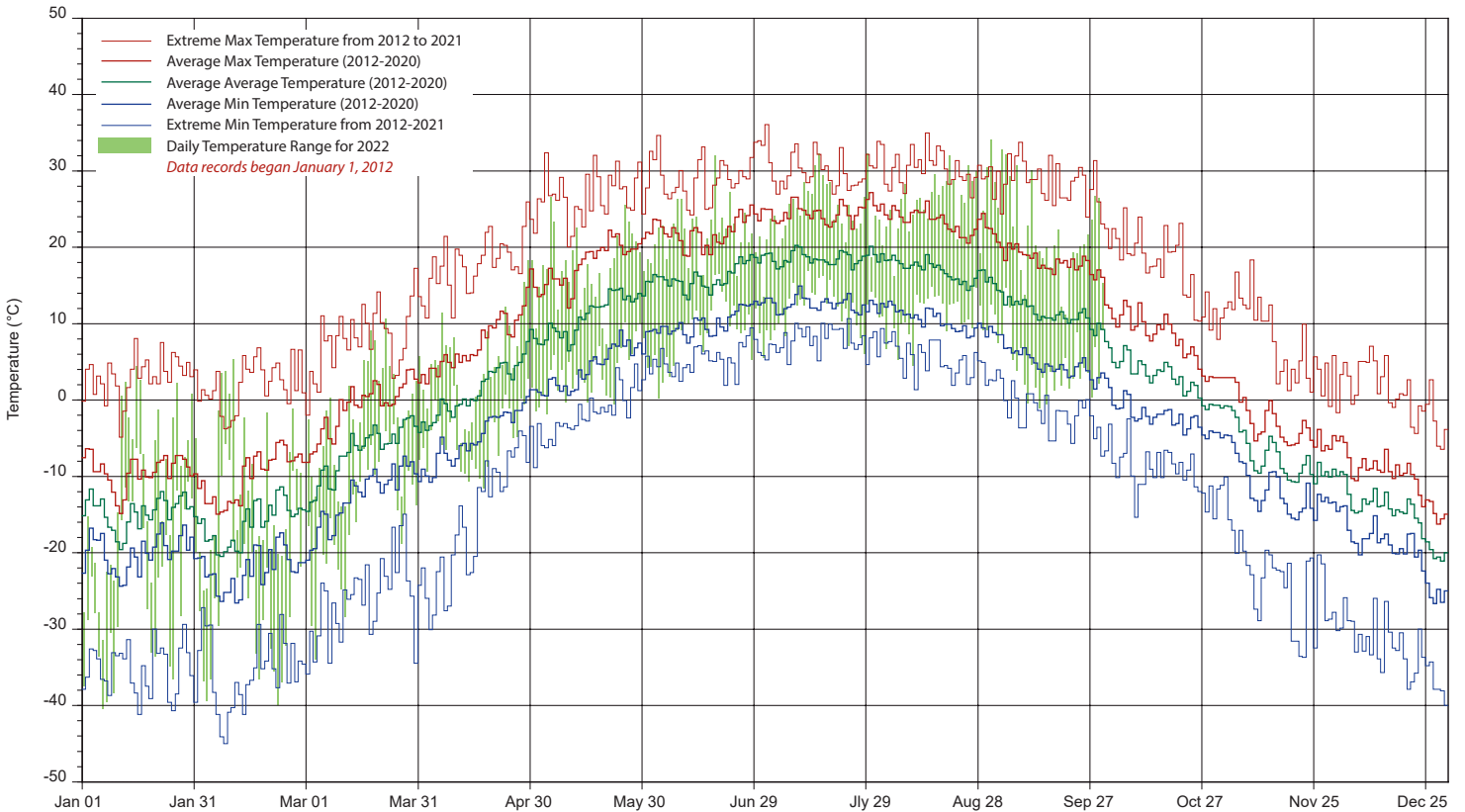
### 1/2 hr Maximum Wind Speed and Direction CLC September 2022



# SRC's CLIMATE REFERENCE STATION at the Conservation Learning Centre 2022 PRECIPITATION AND AVERAGE



## 2022 TEMPERATURES AND AVERAGES



SRC proudly recognizes the following CRS supporters:

